

FRONT
OF
COACH

DETAIL H

DETAIL H

52372-60-120 (B)

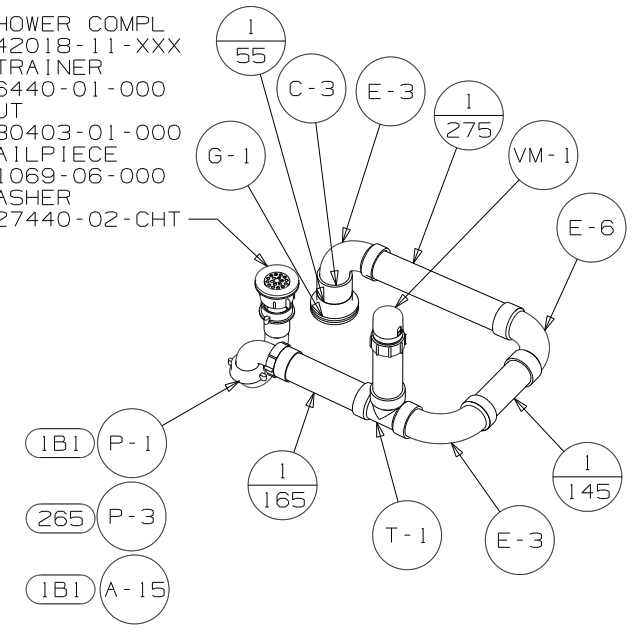
- NOTES:
1. SLOPE OF HORIZONTAL PIPING TO BE MIN 3 PER 305 mm.
 2. SLOPE OF TRAP ARM MUST BE 6 PER 305 mm.
 3. ALL PIPE AND FITTINGS TO BE ASSEMBLED WITH SOLVENT 4020-01-000 (US), 4020-02-000 (CAN).
 4. NEED TO USE SEAL FOR 31.75MM TAIL PIECE.
 5. SEAL AROUND SHOWER WITH SILICONE.
 6. VENT PIPE MUST PROJECT 51 MIN AND 64 MAX ABOVE ROOF FOR PROPER FIT AND FUNCTION.
 7. LOCATE BETWEEN DRAINAGE HOLES IN UPPER FLOOR.
 8. USE WIRE TIE 8343-03-000 (3) TO CLAMP DRAINAGE PIPE IN BRACKET.
 9. HOSE NEEDS TO BE LOOSE INSIDE OF CLAMP.
 10. USE SMOOTH PLUMBERS PUTTY 167459-01-000 TO SEAL STRAINER (.2 PER STRAINER).

- (214) DISHWASHER DRAWER STYLE
- (1B1) CODES/STANDARDS USA
- (265) CODES/STDS-CSA, CMVSS
- (215) DISHWASHER WITHOUT

(X-X)
FOR
DRAINAGE
CALLOUTS
SEE DWG NO
116229-01-000

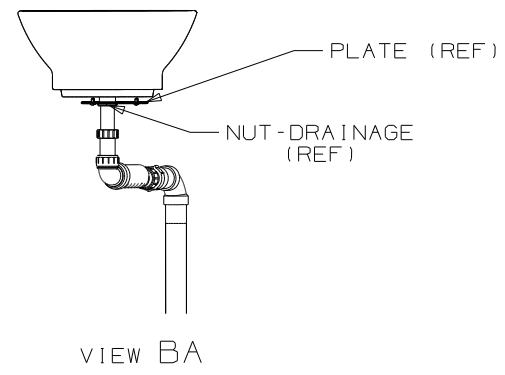
| | | | |
|---------------------------------|------------|---|--------|
| WINNEBAGO | | COPYRIGHT 2009 WINNEBAGO INDUSTRIES, INC. | |
| DFTB | ORIG. DATE | ALL DIMENSIONS ARE IN MILLIMETERS | |
| CHKR | | FIRST USED | |
| P.E. | | 09 S40WD | |
| M.E. | | UNSPECIFIED TOLERANCES ARE: | |
| DSNR | | MATERIAL: | |
| | | WHOLE DIM (X) | : 3 |
| | | ONE-PLACE (X.X) | : 1.5 |
| | | TWO-PLACE (X.XX) | : 0.50 |
| | | ANGLE | : 1° |
| THIRD ANGLE PROJECTION | | DO NOT SCALE DRAWING | |
| TITLE: DRAINAGE SYSTEM INSTL | | | |
| SHEET 1 OF 4 | PART NO | 165155 | REV |
| | | | |

- SHOWER COMPL
- 142018-11-XXX
- STRAINER
- 66440-01-000
- NUT
- 130403-01-000
- TAILPIECE
- 11069-06-000
- WASHER
- 127440-02-CHT

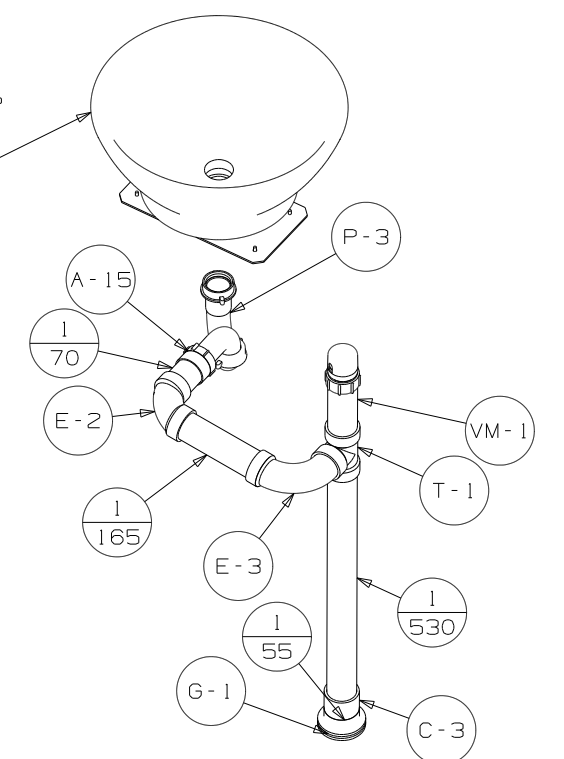


VIEW F

- SINK-LAVATORY, VESSEL
- 165310-01-CHT
- PLATE
- 165361-01-CHT
- SCREW
- G67-10-08B (4)
- WASTE ASM W/POPOP
- 165753-01-CHT
- NUT-DRAINAGE
- 167042-01-CHT

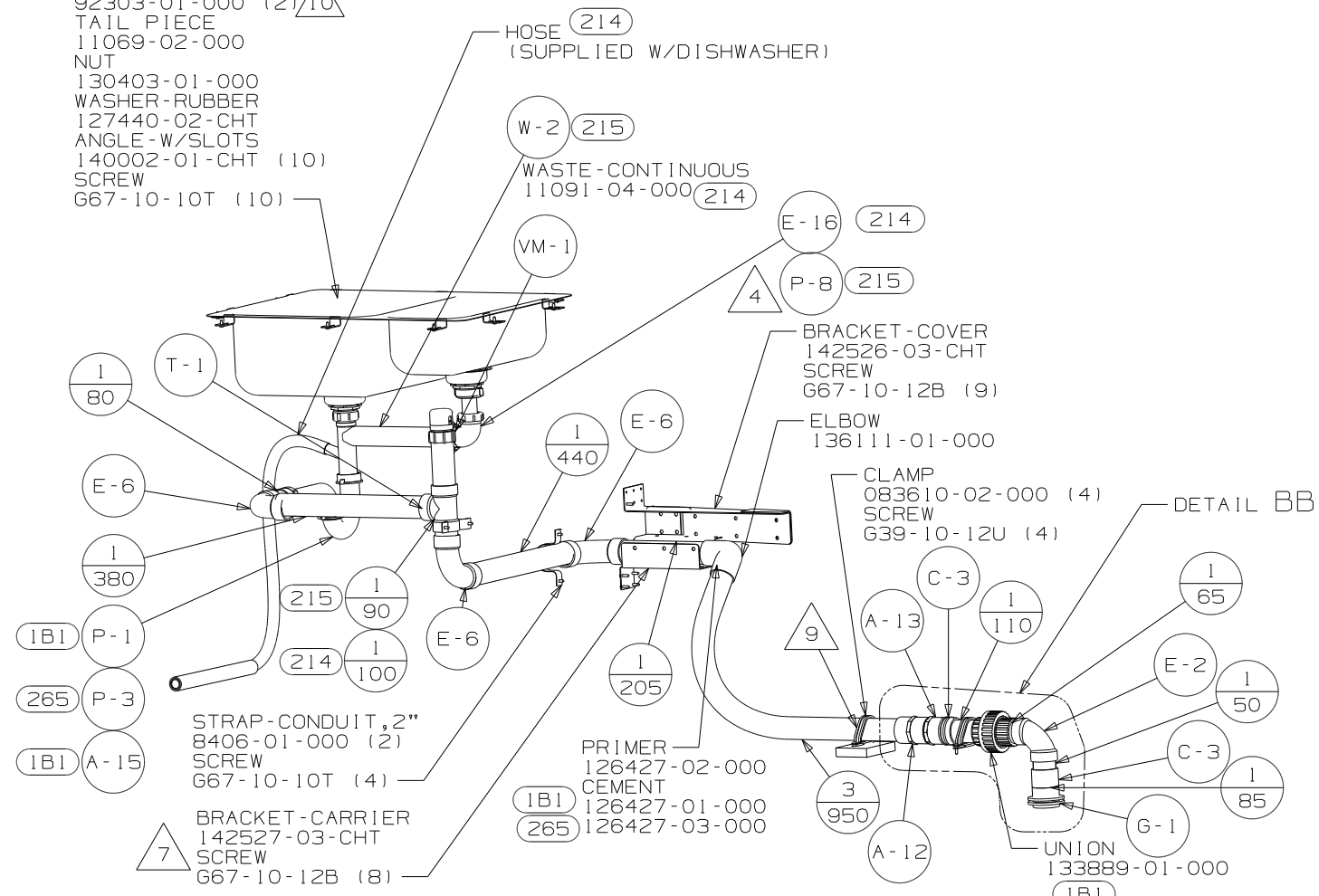


VIEW BA



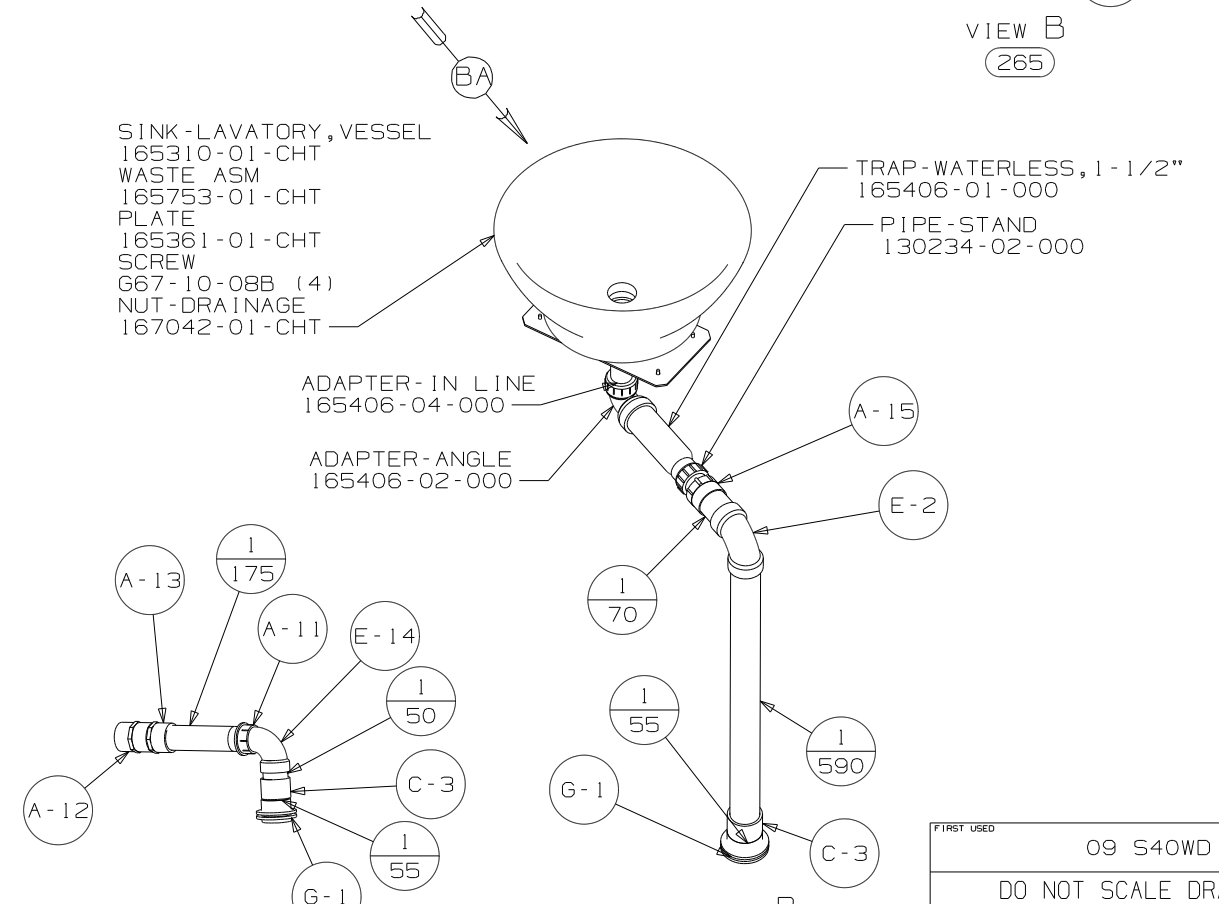
VIEW B
265

- SINK-GALLEY
- 144445-01-000
- STRAINER
- 92303-01-000 (2) 10
- TAILPIECE
- 11069-02-000
- NUT
- 130403-01-000
- WASHER-RUBBER
- 127440-02-CHT
- ANGLE-W/SLOTS
- 140002-01-CHT (10)
- SCREW
- G67-10-10T (10)



VIEW A

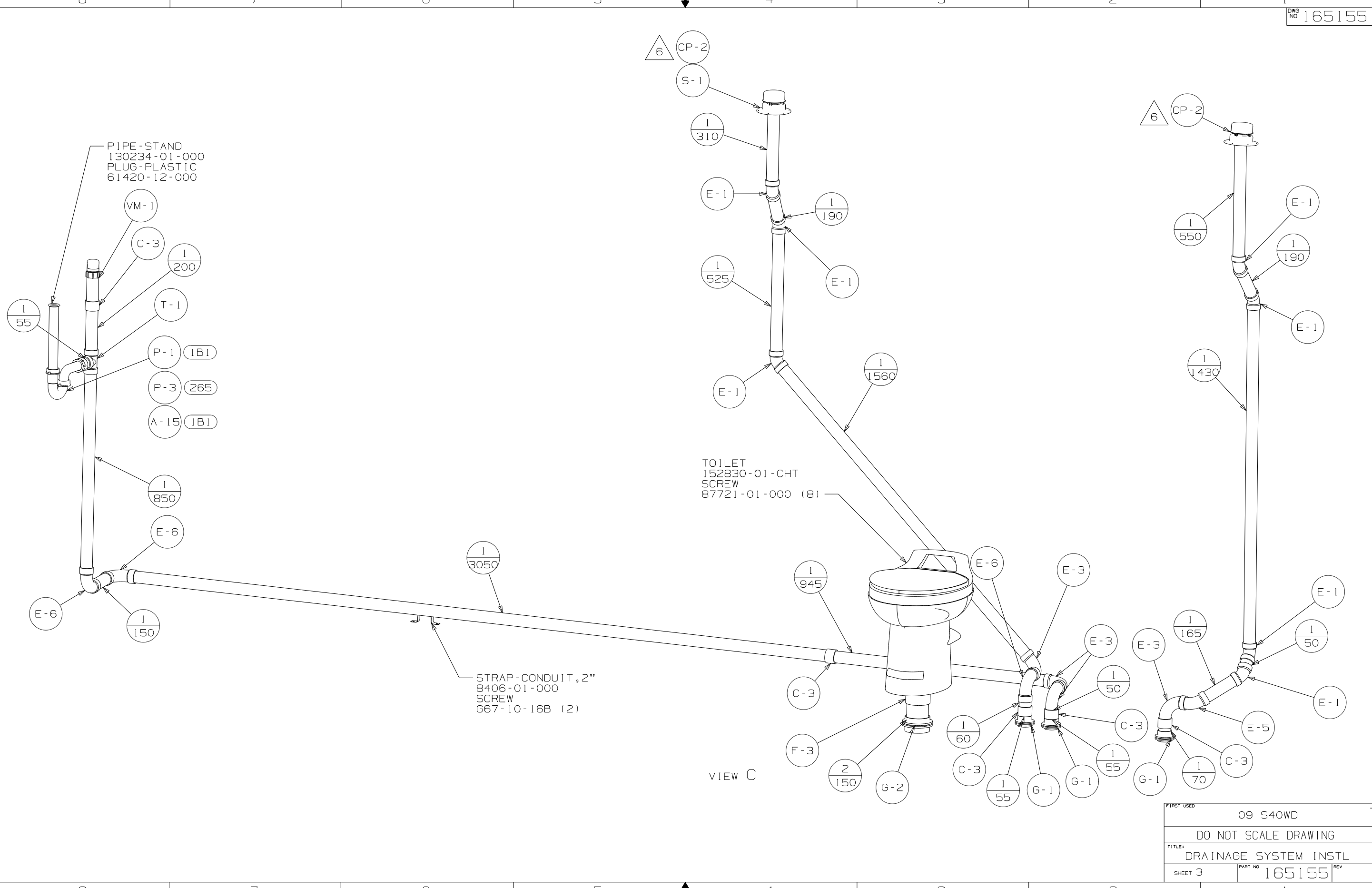
- SINK-LAVATORY, VESSEL
- 165310-01-CHT
- WASTE ASM
- 165753-01-CHT
- PLATE
- 165361-01-CHT
- SCREW
- G67-10-08B (4)
- NUT-DRAINAGE
- 167042-01-CHT



VIEW B
1B1

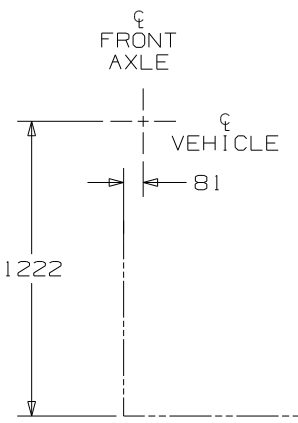
DETAIL BB
265

| | | |
|------------|-----------------------|--------|
| FIRST USED | 09 S40WD | |
| TITLE: | DO NOT SCALE DRAWING | |
| | DRAINAGE SYSTEM INSTL | |
| SHEET 2 | PART NO | 165155 |
| | REV | |

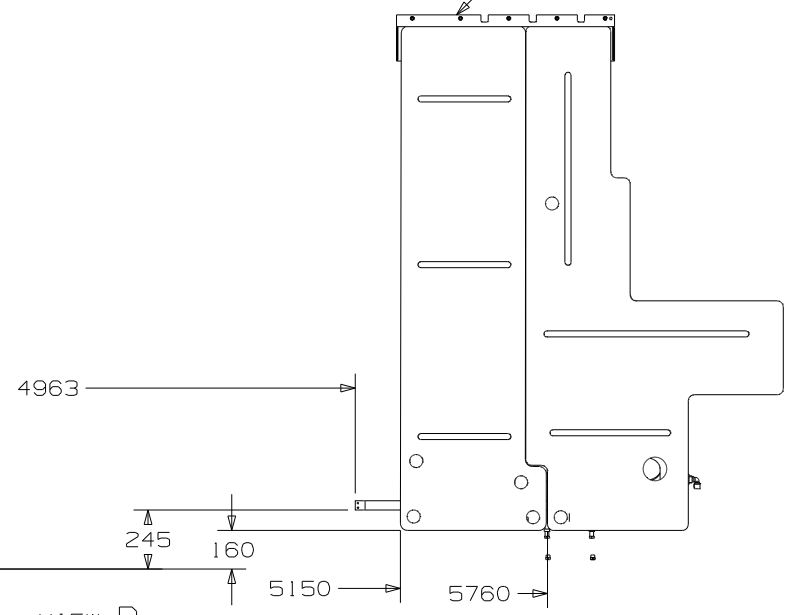


VIEW C

| | | | |
|------------|-----------------------|--------|-------------|
| FIRST USED | 09 S40WD | | |
| TITLE: | DO NOT SCALE DRAWING | | |
| | DRAINAGE SYSTEM INSTL | | |
| SHEET 3 | PART NO | 165155 | REV |
| | | | 1 3/11/2009 |



BRACKET-ASM TANK
158968-02-CHT



VIEW D

BRACKET-DRAINAGE TANK
146080-02-CHT (2)

H-2 VALVE-SEWER
144728-01-000
V-11 CLAMP-HOSE
62401-09-000

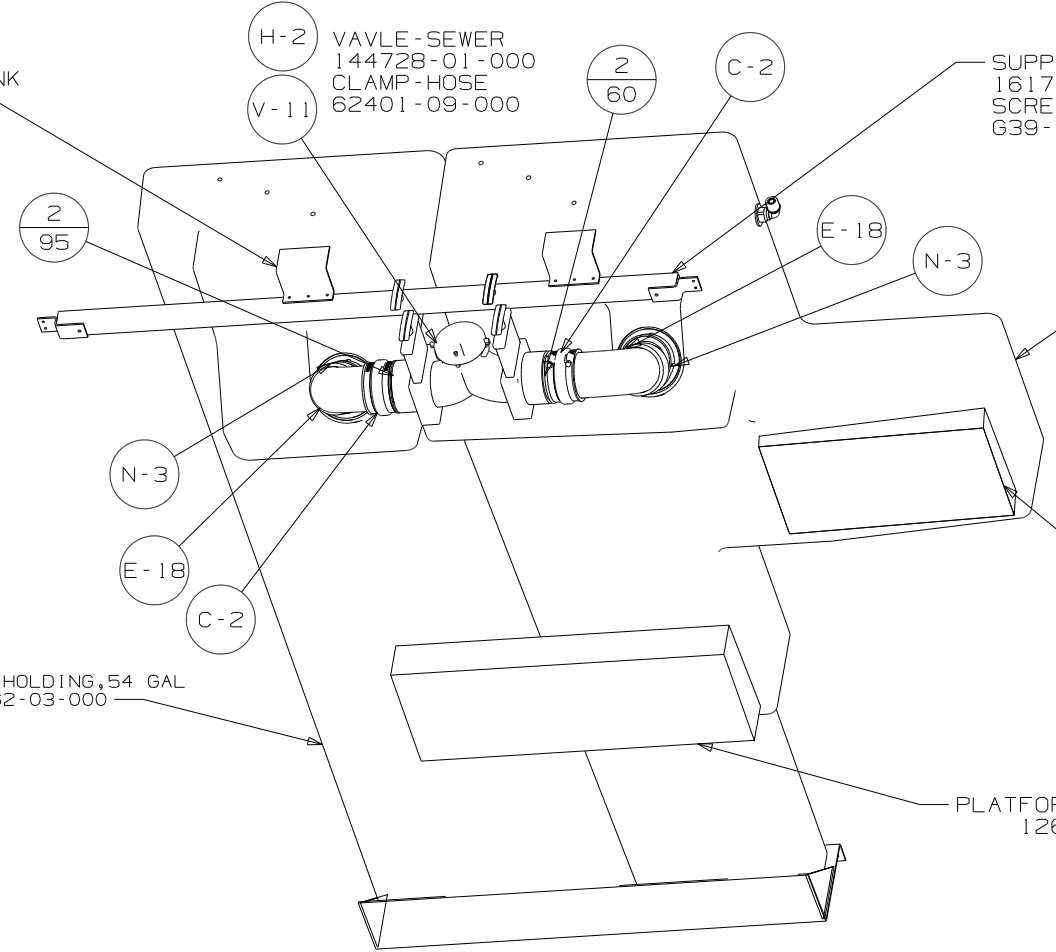
SUPPORT ASM-HOLDING TANK
161762-02-CHT
SCREW
G39-10-20T (4)

TANK-HOLDING, 67 GAL, BLK, RR
163063-03-000

PLATFORM-HOLDING TANK
126714-10-000

PLATFORM-HOLDING TANK
126714-49-000

TANK-HOLDING, 54 GAL
163062-03-000

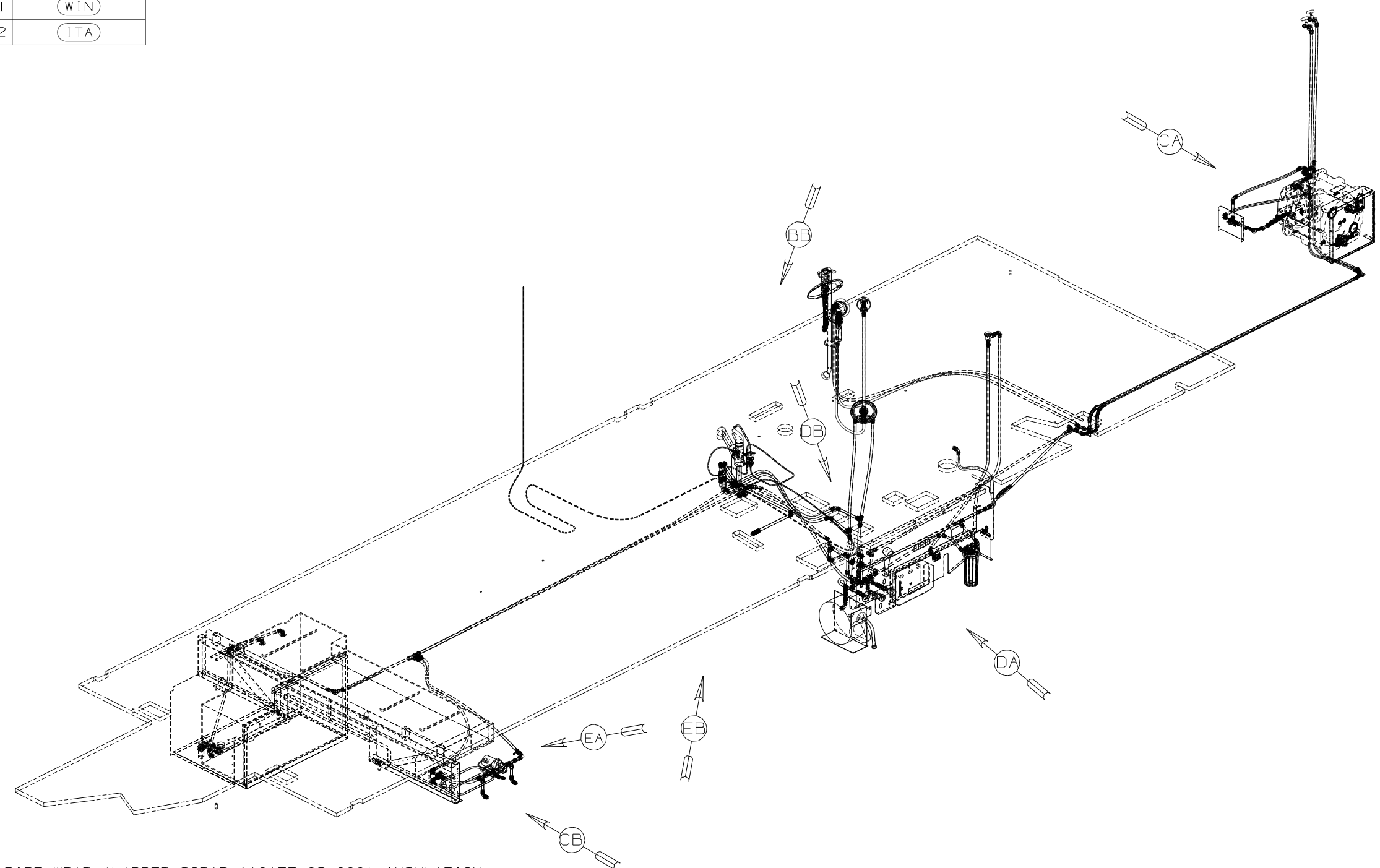


VIEW E

| | |
|------------|-----------------------|
| FIRST USED | 09 S40WD |
| TITLE | DO NOT SCALE DRAWING |
| | DRAINAGE SYSTEM INSTL |
| SHEET 4 | PART NO 165155 REV |

| | |
|-----------|-------|
| DWG NO | -- |
| 165165-01 | (WIN) |
| 165165-02 | (ITA) |

| | | |
|----------|-----------------|--------|
| RELEASE | REV DATE | DWG NO |
| A | | 165165 |
| REV ZONE | REVISION RECORD | DATE |
| | | |



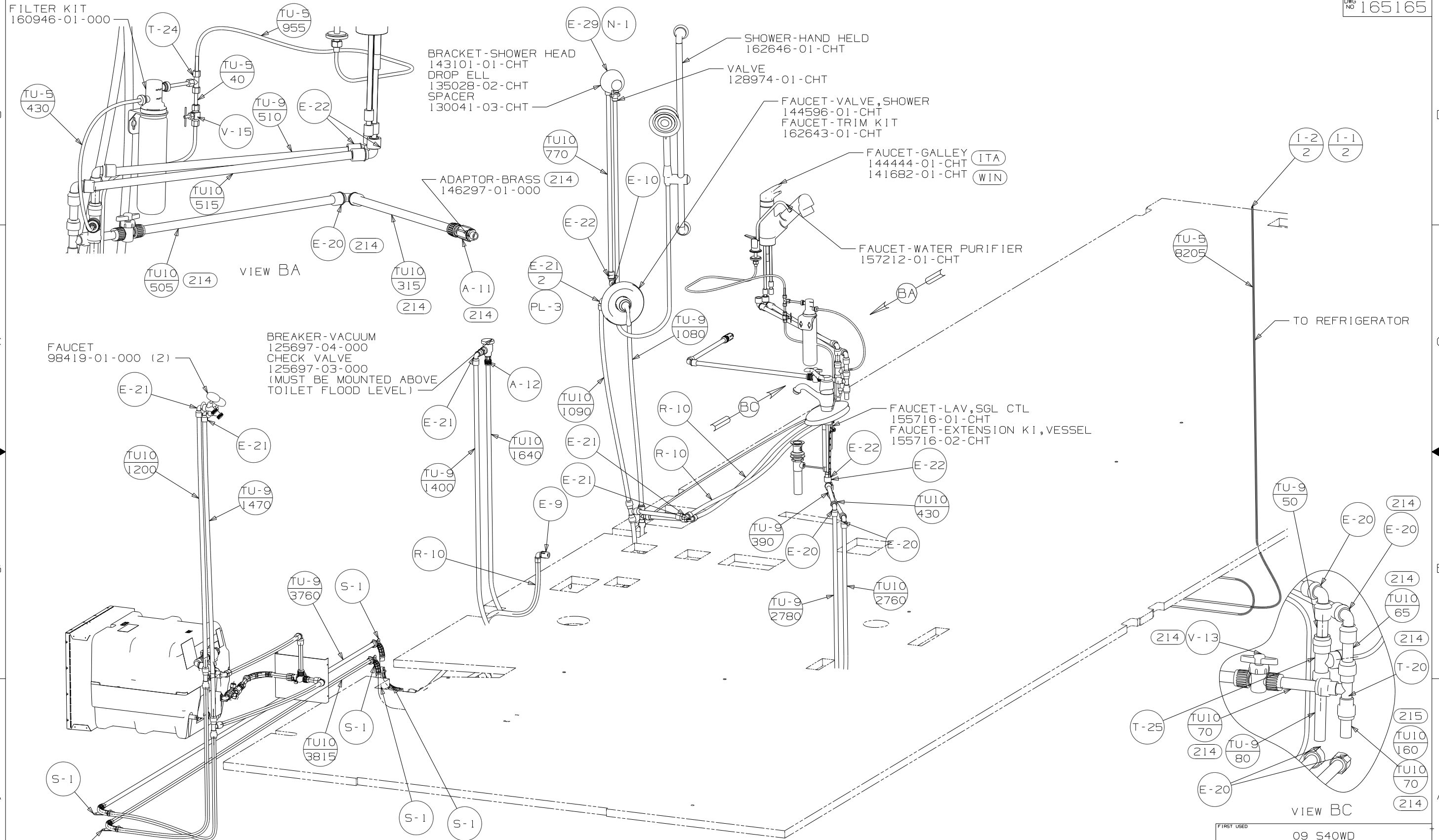
- (215) DISHWASHER WITHOUT
- (214) DISHWASHER DRAWER STYLE
- (WIN) WINNEABAGO ONLY
- (ITA) ITASCA ONLY
- (54E) WASHER/DRYER
- (21M) WASHER/DRYER PREP

- 7 ADD PIPE WRAP (LADDER SCRAP 110157-02-000) INSULATION.
 - 6 ADD TEFLON TAPE 10405-03-000.
 - 5 ADD TEFLON TAPE 10405-02-000.
 - 4 ADD TEFLON TAPE 10405-01-000.
3. ALL TUBING TO BE SECURED AT 1200 INTERVALS MAXIMUM WITH CLAMP 10495-01-000 AND SCREW G67-10-12B OR EQUIVALENT.
 2. TUBING TO BE INSTALLED WITH SUFFICIENT SLOPE TO PROVIDE DRAINAGE TO NEAREST VALVE.
 1. PLASTIC FITTINGS TO BE SEALED WITH SEALANT 84456-01-000.

NOTES:

(X-X)
FOR WATER CALLOUTS SEE DWG NO 116230-01-000

| | | | |
|---------------------------|------------|---|--------|
| WINNEBAGO | | COPYRIGHT 2008 WINNEBAGO INDUSTRIES, INC. | |
| DFT | ORIG. DATE | ALL DIMENSIONS ARE IN MILLIMETERS | |
| CHKR | | FIRST USED | |
| P.E. | | 09 S40WD | |
| M.E. | | UNSPECIFIED TOLERANCES ARE: | |
| DSNR | | MATERIAL: | |
| | | WHOLE DIM (X) | : 3 |
| | | ONE-PLACE (X.X) | : 1.5 |
| | | TWO-PLACE (X.XX) | : 0.50 |
| | | ANGLE | : 1° |
| THIRD ANGLE PROJECTION | | DO NOT SCALE DRAWING | |
| TITLE: WATER SYSTEM INSTL | | | |
| SHEET 1 OF 5 | PART NO | 165165 | REV |
| | | | |



FILTER KIT
160946-01-000

D

C

B

A

D

C

B

A

- WATER-HTR
145541-03-000
- DOOR
125420-05-CHT
- SCREW
G39-10-10U (16)
- CABLE ASM
76767-03-000
- SCREW
113563-01-CHT
- AL EXTR
165959-51-002 (2)
- 165959-51-003 (2)
- FLANGE-WATER HEATER
152239-02-CHT

COVER-VALVE, BYPASS
138618-03-CHT

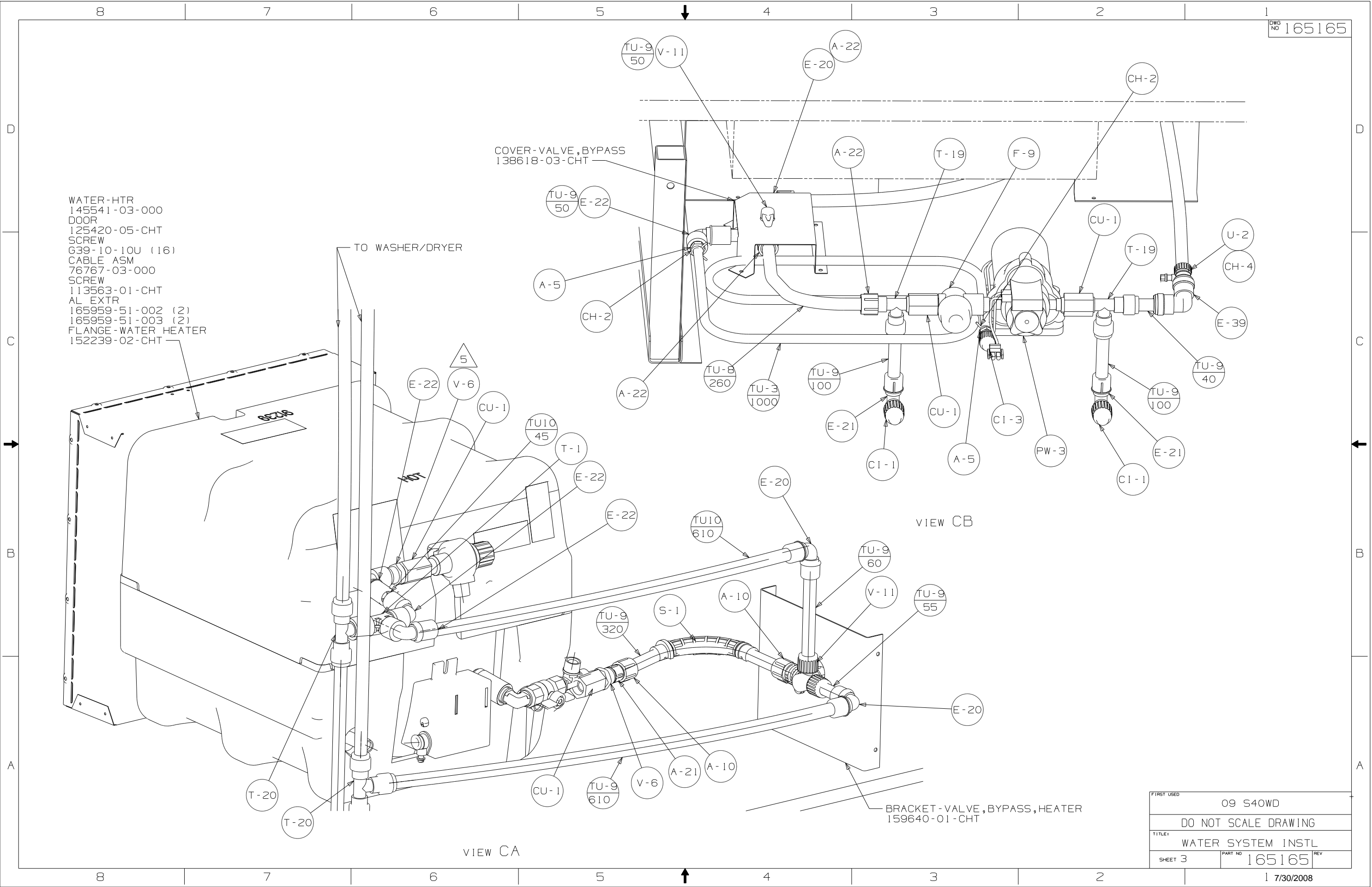
BRACKET-VALVE, BYPASS, HEATER
159640-01-CHT

TO WASHER/DRYER

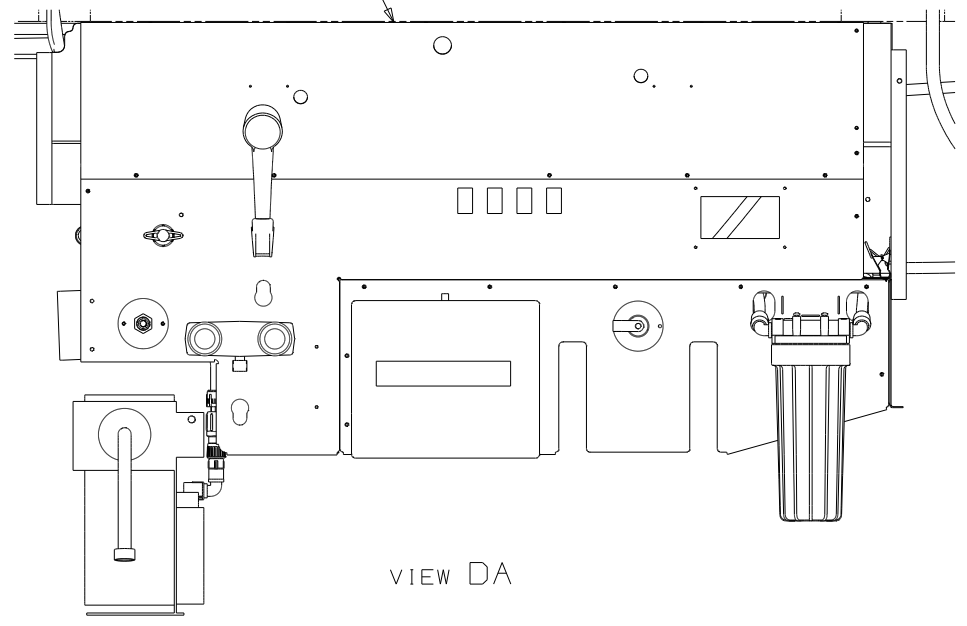
VIEW CB

VIEW CA

| | |
|----------------------|--------------------|
| FIRST USED | 09 S40WD |
| DO NOT SCALE DRAWING | |
| TITLE: | WATER SYSTEM INSTL |
| SHEET 3 | PART NO 165165 REV |

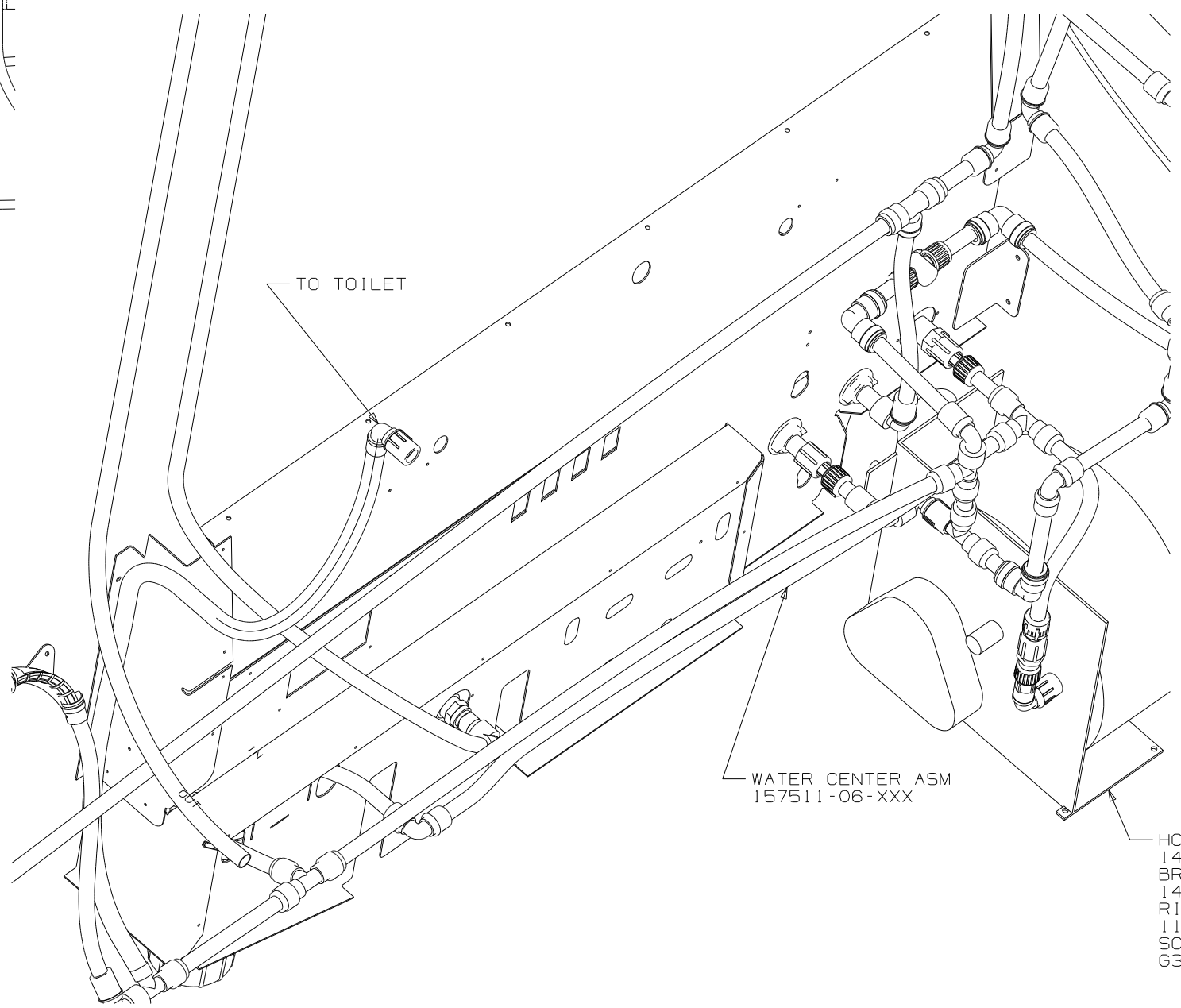


SERVICE CENTER ASM
145207-16-XXX



VIEW DA

TO TOILET

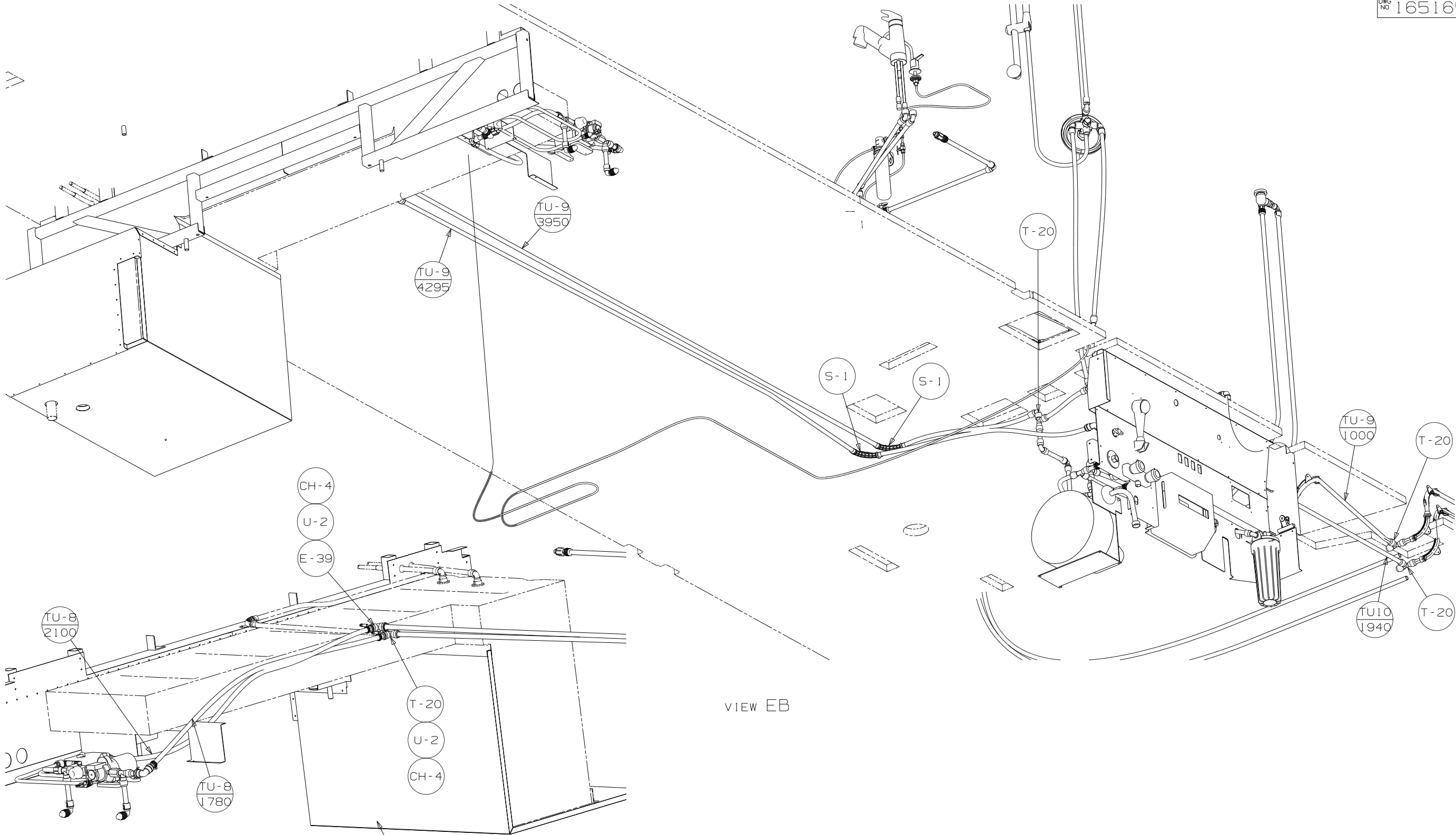


WATER CENTER ASM
157511-06-XXX

- HOSE - REEL , POWERED
142675-01-CHT
- BRACKET
145758-02-CHT
- RIVET
118626-01-CHT (4)
- SCREW
G39-10-20U (2)

VIEW DB

| | | | |
|------------|----------------------|--------|-----|
| FIRST USED | 09 S40WD | | |
| TITLE | DO NOT SCALE DRAWING | | |
| TITLE | WATER SYSTEM INSTL | | |
| SHEET 4 | PART NO | 165165 | REV |



VIEW EB

VIEW EA

TANK INSTL
(SEE FRAME ASM-CHASSIS)

| | | | |
|------------|----------------------|--------|-----|
| FIRST USED | 09 S40WD | | |
| TITLE | DO NOT SCALE DRAWING | | |
| TITLE | WATER SYSTEM INSTL | | |
| SHEET 5 | PART NO | 165165 | REV |