



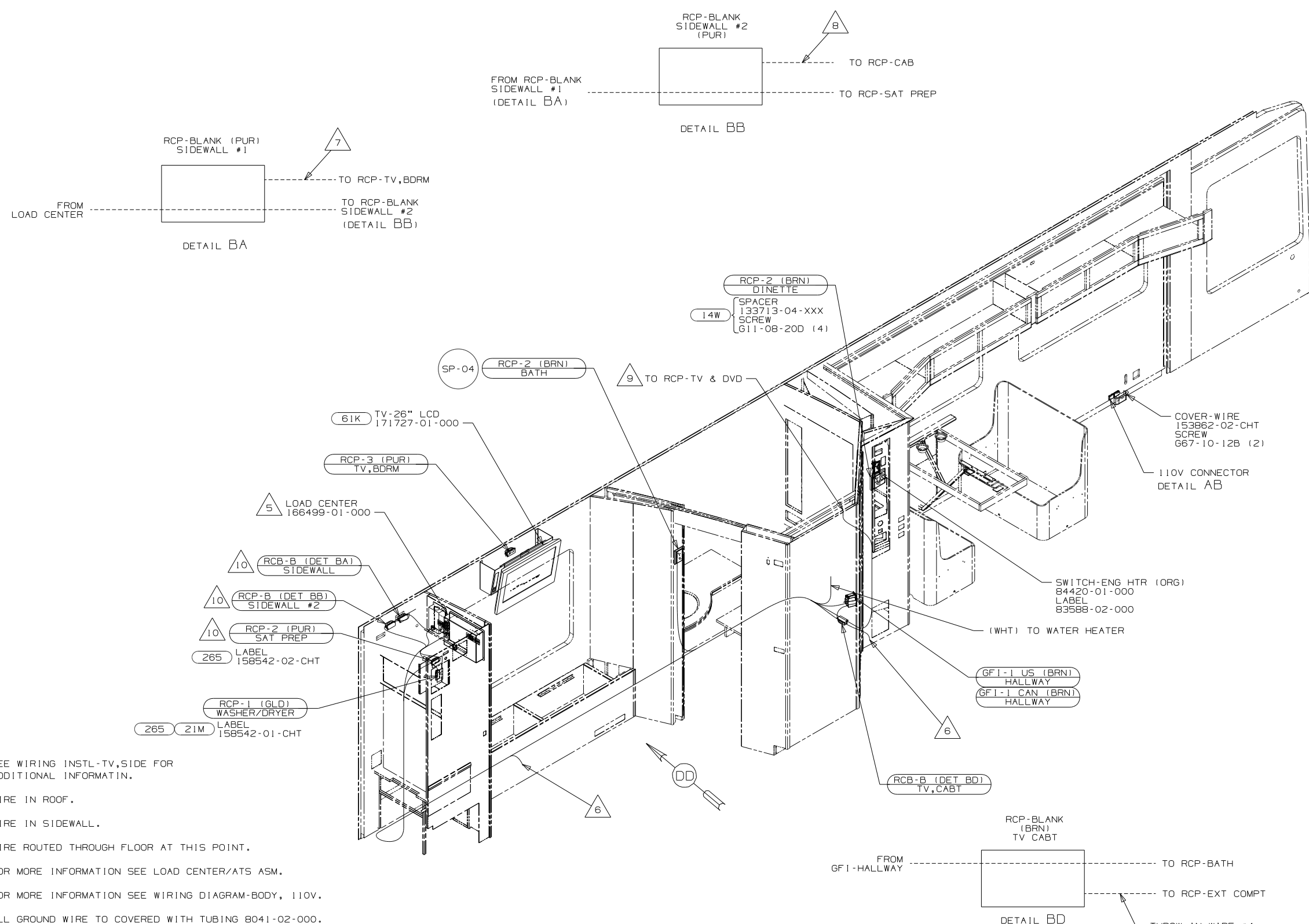
DANGER

Danger of electrical shock, burns or death. Always remove all power sources before attempting any repair, service or diagnostic work. Power can be present from shore power, generator, inverter or battery. All power sources must be disabled and secured before performing any service.



CAUTION

If you lack the skills, tools or equipment to perform diagnostic or repair work leave such work to an authorized Winnebago Industries dealer or other qualified shop.



- 9 SEE WIRING INSTL-TV, SIDE FOR ADDITIONAL INFORMATIN.
- 8 WIRE IN ROOF.
- 7 WIRE IN SIDEWALL.
- 6 WIRE ROUTED THROUGH FLOOR AT THIS POINT.
- 5 FOR MORE INFORMATION SEE LOAD CENTER/ATS ASM.

- 4 FOR MORE INFORMATION SEE WIRING DIAGRAM-BODY, 110V.
- 3 ALL GROUND WIRE TO COVERED WITH TUBING 8041-02-000.
- 2 ALL 110V WIRE TO BE CLAMPED WITH CLAMP 10497-05-000 WITHIN 200MM OF OUTLET BOXES, USE SCREW G67-10-12B
- 1 ALL WIRES TO BE SECURED WITH CLAMP 10495-01-000 OR CLIP 80734-01-000 EVERY 600MM. USE SCREW G67-10-12B UNLESS OTHERWISE SPECIFIED

10 LEAVE A 1300 LOOP BEHIND LOAD CENTER FOR WIRING RECEPTALS.

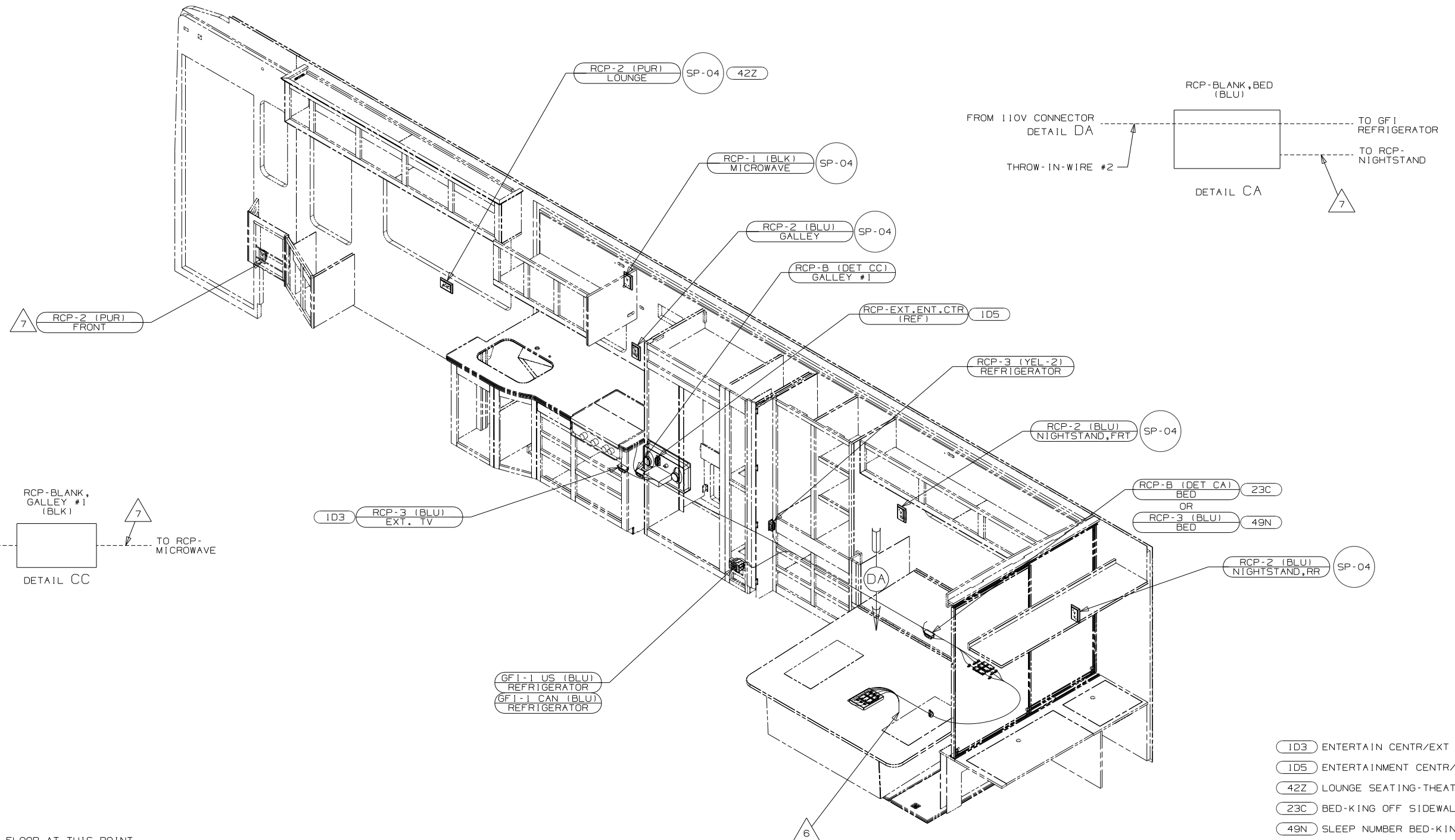
FOR ELECTRICAL TORQUE SPECIFICATIONS SEE DWG NO. 128783-01-000

FOR ELECTRICAL CALLOUTS SEE DWG NO. 121339-01-000

- 61K TV (REAR)-26" COLOR STEREO
- 14W DINETTE
- 78J ELECTRICAL SYSTEM-50 AMP
- 21M WASHER/DRYER PREP
- 265 CODES/STANDARDS-CSA/CMVSS
- 1B1 CODES/STANDARDS USA

1B1 265 78J

FIRST USED		09 P39Z	
DO NOT SCALE DRAWING			
TITLE: WIRING INSTL-BODY, 110V			
SHEET 2	PART NO	168232	REV



- 7 WIRE IN SIDEWALL
- 6 WIRE ROUTED THROUGH FLOOR AT THIS POINT.
- 5 FOR MORE INFORMATION SEE LOAD CENTER/ATS ASM.

- 4 FOR MORE INFORMATION SEE WIRING DIAGRAM-BODY, 110V.
3 ALL GROUND WIRE TO COVERED WITH TUBING 8041-02-000.
2 ALL 110V WIRE TO BE CLAMPED WITH CLAMP 10497-05-000
WITHIN 200MM OF OUTLET BOXES, USE SCREW 667-10-12B
1 ALL WIRES TO BE SECURED WITH CLAMP 10495-01-000
OR CLIP 80734-01-000 EVERY 600MM. USE SCREW
667-10-12B UNLESS OTHERWISE SPECIFIED

NOTES:

- | | |
|-----|------------------------------|
| 1D3 | ENTERTAIN CENTR/EXT TV-DVD |
| 1D5 | ENTERTAINMENT CENTR/EXT W/CD |
| 42Z | LOUNGE SEATING-THEATER STYLE |
| 23C | BED-KING OFF SIDEWALL |
| 49N | SLEEP NUMBER BED-KING SIZE |
| 78J | ELECTRICAL SYSTEM-50 AMP |
| 265 | CODES/STANDARDS-CSA/CMVSS |
| 1B1 | CODES/STANDARDS USA |

1B1 265 78J

09 P39Z

DO NOT SCALE DRAWING

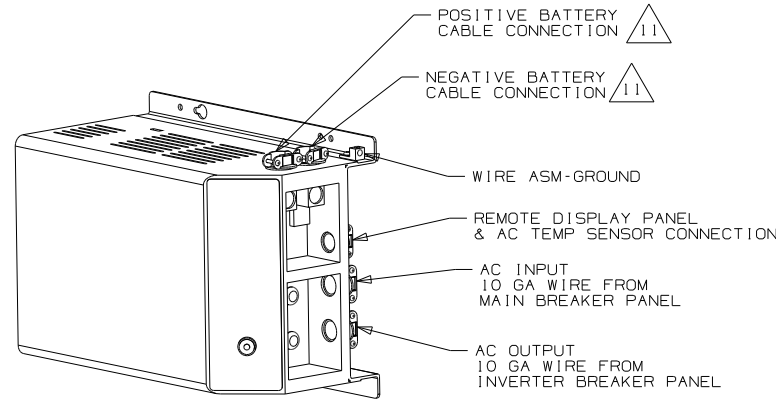
TITLE: WIRING INSTL-BODY, 110V

SHEET 3	PART NO 168232	REV
---------	----------------	-----

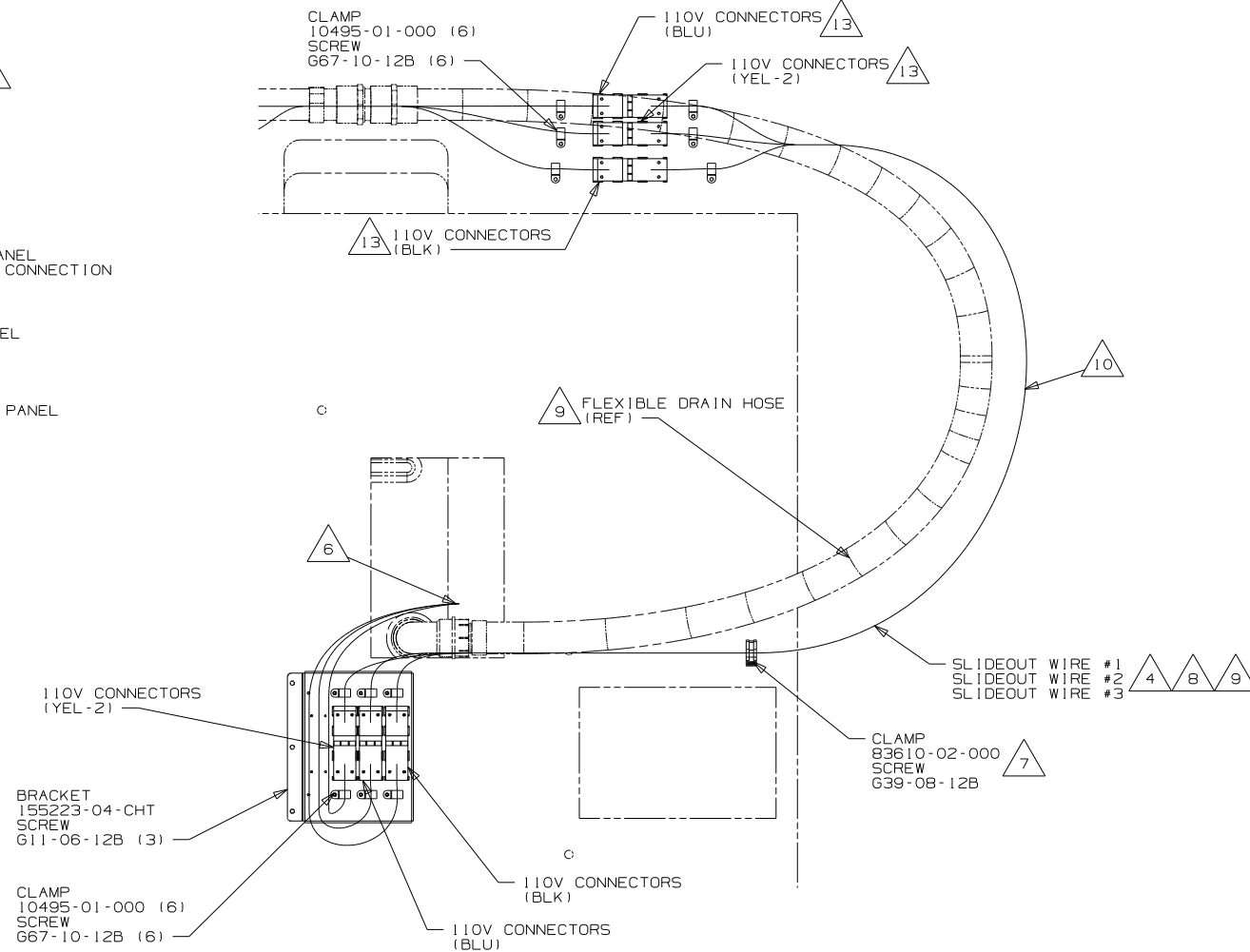
12/10/2008

FOR ELECTRICAL
TORQUE
SPECIFICATIONS
SEE DWG NO.
128783-01-000

	FOR ELECTRICAL CALLOUTS SEE DWG NO. 121339-01-000
---	---



DETAIL DB

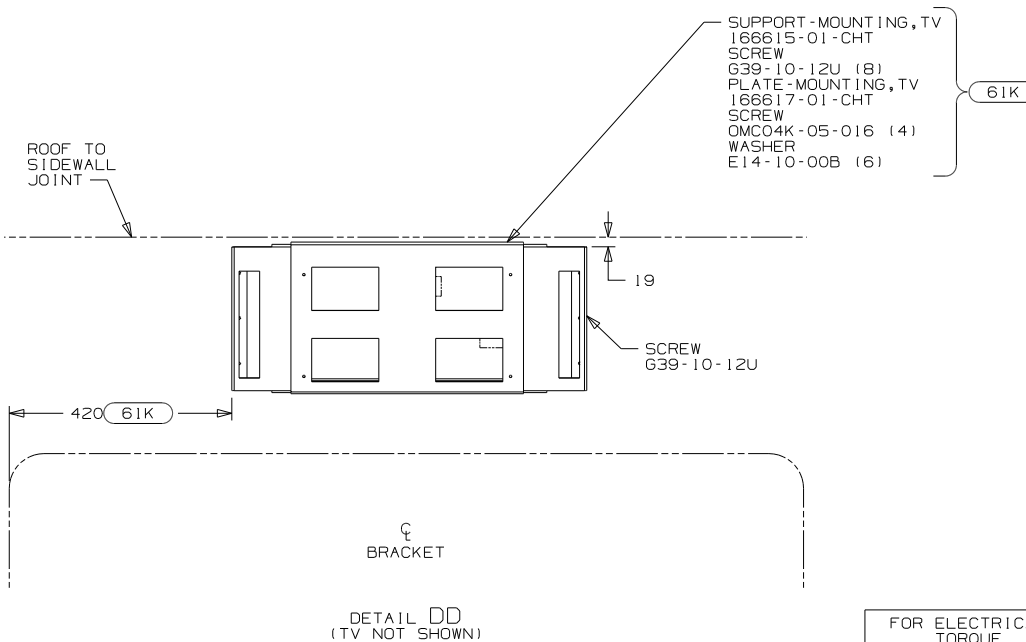


DETAIL DA

- 13 MOUNT CONNECTORS ON SIDEWALL SO THAT CONNECTORS ARE NOT IN A POTENTIALLY WET AREA.
- 12 BRACKET ATTACHES TO TV.
- 11 SEE WIRING INSTL-CHASSIS FOR ADDITIONAL INFORMATION.
- 10 WIRE TIE WIRING TO WATER LINES IN THIS AREA USING WIRE TIE 8343.
- 9 DO NOT TIE WIRING TO THE FLEXIBLE DRAIN HOSE.
- 8 WIRE TIE 12V WIRING TOGETHER WITH 110V WIRING WITH WIRE TIE 8343 AS REQUIRED.
- 7 CLAMP WIRING TO FRAME ASM-SLIDEOUT,BED SO THAT WIRE ROUTE ABOVE ENGINE COVER.
- 6 WIRE ROUTED THROUGH FLOOR AT THIS POINT.
- 5 CONNECT WIRES BLK TO BLK, WHT TO WHT, KEEP CIRCUITS SEPERATED. GROUNDS TO ALL BE CONNECTED TOGETHER.
- 4 SEE LOAD CENTER/ATS ASM FOR ADDITIONAL INFORMATION.
- 3 MAKE LOOP AS SMALL AS POSSIBLE WHEN SLIDEOUT IS COMPLETELY RETRACTED, & WIRE TIE 12V WIRE ASM TO BUNDLE WITH TIE 8343-03-000.

- 2. ROUTE 12V WIRE ALONG WITH 110V SLIDEOUT WIRE.
- 1. WIRE MUST BE ROUTED THROUGH CLAMPS AS SHOWN.

NOTES:



DETAIL DD
(TV NOT SHOWN)

FOR ELECTRICAL
TORQUE
SPECIFICATIONS
SEE DWG NO.
128783-01-000

FOR ELECTRICAL
CALLOUTS
SEE DWG NO.
121339-01-000

- 61K TV (REAR) - 26" COLOR STEREO
- 265 CODES/STANDARDS-CSA/CMVSS
- 1B1 CODES/STANDARDS USA

1B1		265	
FIRST USED			
09 P39Z			
DO NOT SCALE DRAWING			
TITLE:			
WIRING INSTL-BODY, 110V			
SHEET 4		PART NO	REV
		168232	