



DANGER

Danger of electrical shock, burns or death. Always remove all power sources before attempting any repair, service or diagnostic work. Power can be present from shore power, generator, inverter or battery. All power sources must be disabled and secured before performing any service.



CAUTION

If you lack the skills, tools or equipment to perform diagnostic or repair work leave such work to an authorized Winnebago Industries dealer or other qualified shop.

TV-20", STEREO FLAT PANEL LCD
164598-01-000
CABLE ASM-COAX
87105-01-006

SLIDEOUT ROOF

SCREW
OMG02B-04-012 (4)
WASHER
E14-10-00B (4)
USED TO MOUNT TV,
TO TV BRACKET
SCREW
G39-10-12U (6)
BRACKET TO SLIDE
END WALL

BRACKET-MOUNT, TV
162393-01-CHT
PLATE-MOUNT, TV
162394-03-CHT
BOLT
C12-04-10B (3)
NUT
D39-04-00B (3)

RCP-1 (BLK)
MICROWAVE

GFI US (BRN)
GALLEY
GFI CAN (BRN)
GALLEY

RCP-3 (YEL-2)
REFRIGERATOR

RCP-2 (BRN)
DINETTE
(BRN ENDS AT GALLEY
GFI WITHOUT)

RCP-2 (BRN)
BEDROOM

RCP-3 (PUR-2)
BEDROOM TV

ROUTE 110V WIRES
WITH DRAINAGE PIPES

GALLEY SLIDEOUT
110V CONNECTIONS
DETAIL FA

LOOP BROWN CIRCUIT UP
1200MM FROM FLOOR

8 CLEAN AND APPLY ADHESIVE PROMOTER 900680-04-000
TO BOTH SURFACES AND BOND WITH TAPE 76322-23-000
(900 MM) AROUND ENTIRE PERIMETER OF BRACKET.

7 LOCATING DIMENSION SEE DETAIL BA

6 WIRE ROUTED THROUGH FLOOR AT THIS POINT.

5 SEE LOAD CENTER/ATS ASM FOR ADDITIONAL INFORMATION.

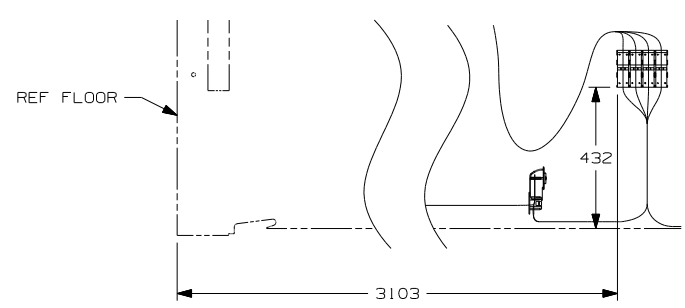
4. SEE WIRING DIAGRAM-BODY, 110V FOR ADDITIONAL INFORMATION.

3. ALL GROUND WIRE TO BE COVERED WITH TUBING 8041-02-000.

2. ALL 110V WIRE TO BE CLAMPED WITH CLAMP 10497-05-000
WITHIN 200MM OF OUTLET BOXES, USE SCREW G67-10-12B.

1. ALL WIRES TO BE SECURED WITH CLAMP 10495-01-000
OR CLIP 80734-01-000 EVERY 600MM. USE SCREW
G67-10-12B UNLESS OTHERWISE SPECIFIED.

NOTES:



DETAIL BA

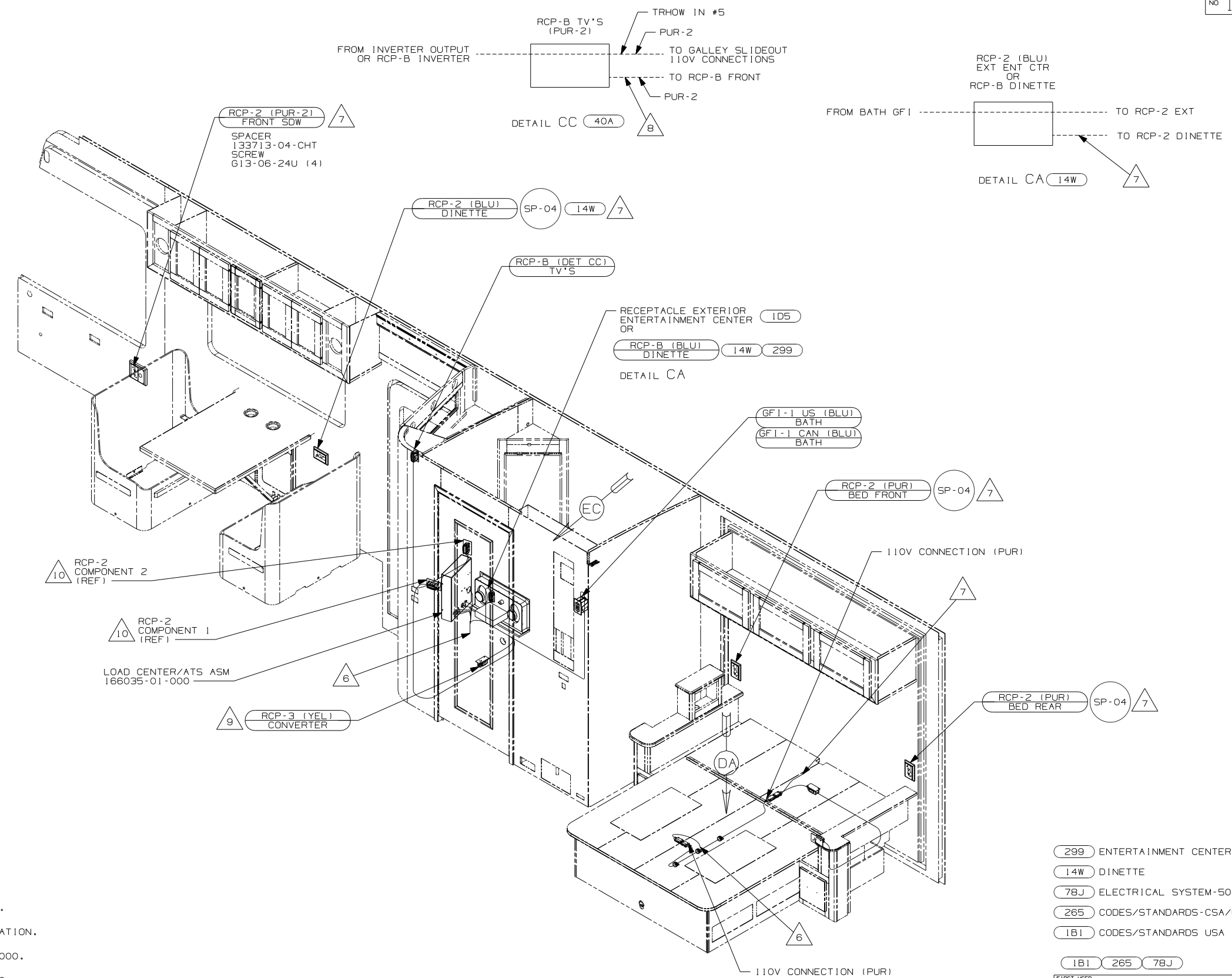
FOR ELECTRICAL
TORQUE
SPECIFICATIONS
SEE DWG NO.
128783-01-000

FOR
ELECTRICAL
CALLOUTS
SEE DWG NO.
121339-01-000

- 22F DINETTE, U-SHAPED ULTRALEATH
- 22B DINETTE - U-SHAPED
- 78J ELECTRICAL SYSTEM-50 AMP
- 265 CODES/STANDARDS-CSA/CMVSS
- 1B1 CODES/STANDARDS USA

1B1 265 78J

FIRST USED	
09 K32H	
DO NOT SCALE DRAWING	
TITLE:	
WIRING INSTL-BODY, 110V	
SHEET 2	PART NO 166039 REV



- 10 SEE WIRING INSTL-TV/DVD,SIDE FOR ADDITIONAL INFORMATION.
- 9 SEE VIEW DB FOR POSITIONING.
- 8 WIRE IN ROOF.
- 7 WIRE IN SIDEWALL.
- 6 WIRE ROUTED THROUGH FLOOR AT THIS POINT.
- 5 SEE LOAD CENTER/ATS ASM FOR ADDITIONAL INFORMATION.
- 4. SEE WIRING DIAGRAM-BODY,110V FOR ADDITIONAL INFORMATION.
- 3. ALL GROUND WIRE TO BE COVERED WITH TUBING 8041-02-000.
- 2. ALL 110V WIRE TO BE CLAMPED WITH CLAMP 10497-05-000 WITHIN 200MM OF OUTLET BOXES, USE SCREW G67-10-12B.
- 1. ALL WIRES TO BE SECURED WITH CLAMP 10495-01-000 OR CLIP 80734-01-000 EVERY 600MM. USE SCREW G67-10-12B UNLESS OTHERWISE SPECIFIED.

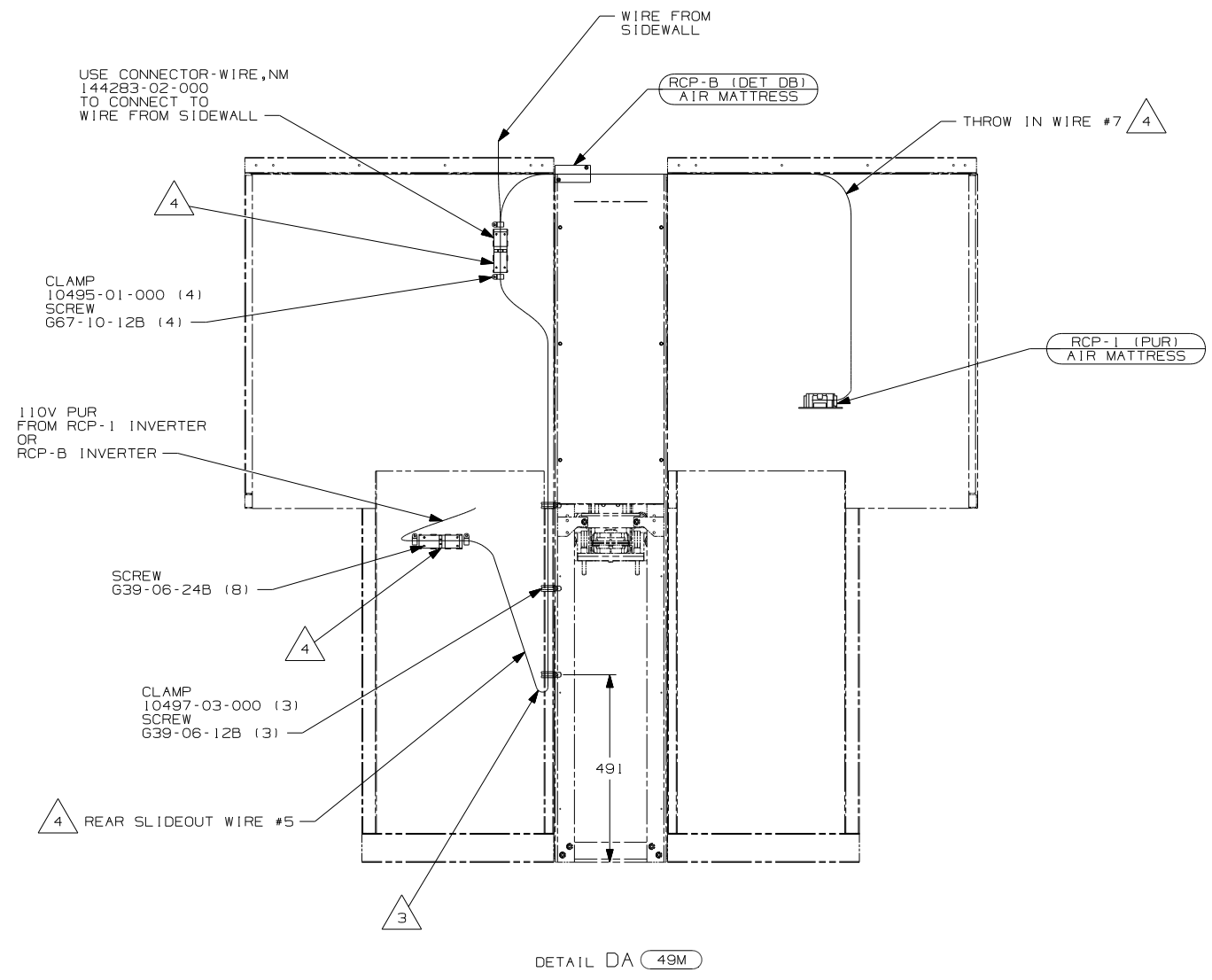
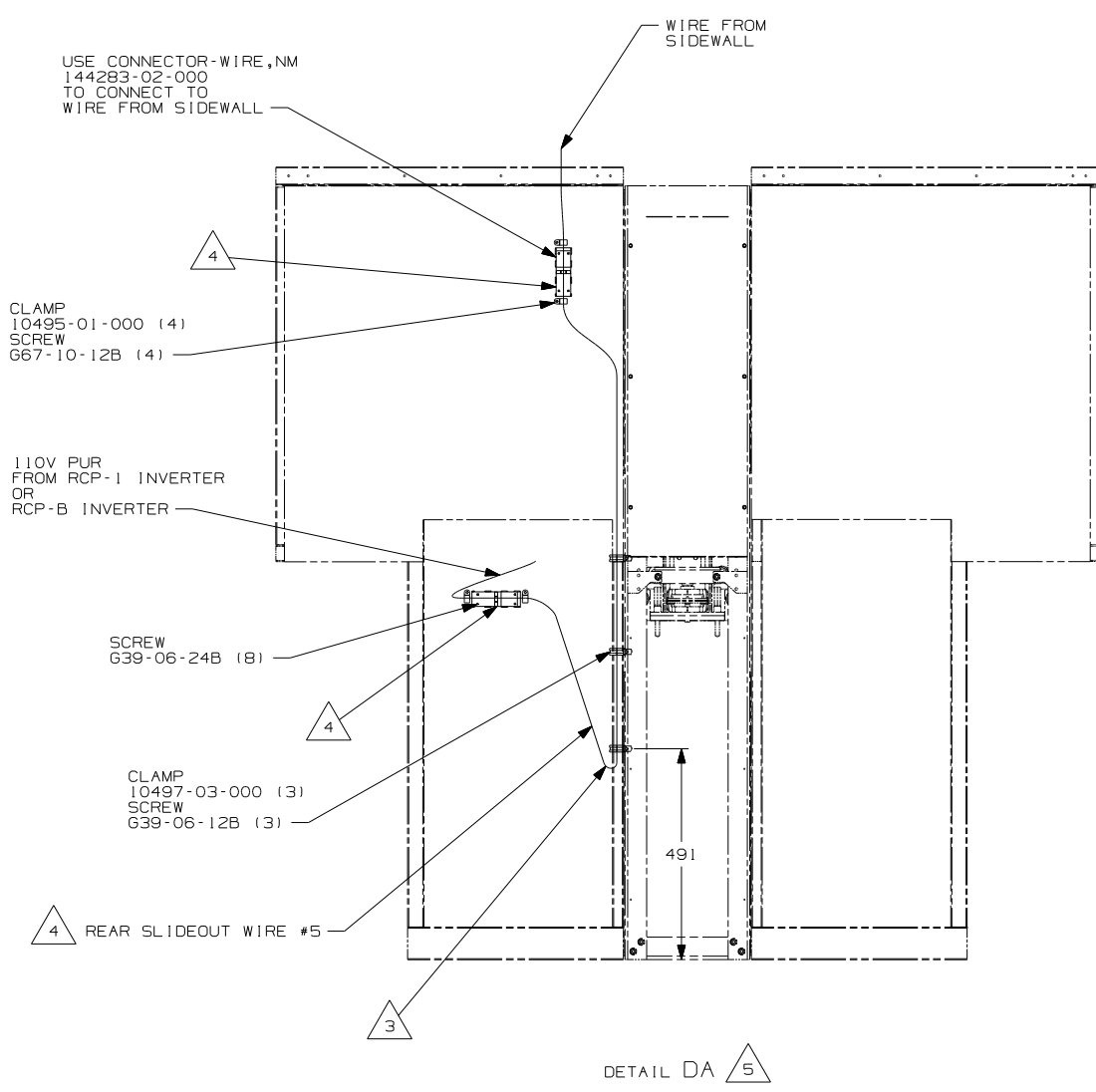
NOTES:

- 299 ENTERTAINMENT CENTER EXT.W/O
- 14W DINETTE
- 78J ELECTRICAL SYSTEM-50 AMP
- 265 CODES/STANDARDS-CSA/CMVSS
- 1B1 CODES/STANDARDS USA

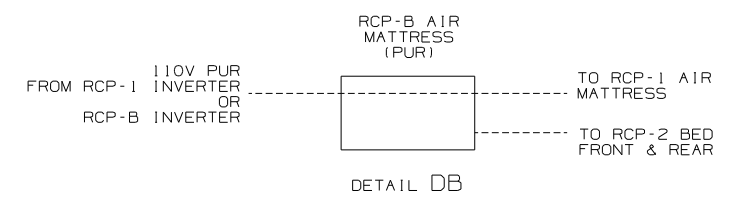
FOR ELECTRICAL TORQUE SPECIFICATIONS SEE DWG NO. 128783-01-000

X-X FOR ELECTRICAL CALLOUTS SEE DWG NO. 121339-01-000

FIRST USED	
09 K32H	
DO NOT SCALE DRAWING	
TITLE: WIRING INSTL-BODY,110V	
SHEET 3	PART NO 166039 REV



- NOTES:
- 5 WITHOUT 49M
 - 4 SEE LOAD CENTER/ATS ASM FOR ADDITIONAL INFORMATION.
 - 3 MAKE LOOP AS SMALL AS POSSIBLE WHEN SLIDEOUT IS COMPLETELY RETRACTED.
2. RUN 12V WIRE ALONG WITH REAR SLIDEOUT WIRE.
1. WIRE MUST BE ROUTED THROUGH CLAMPS AS SHOWN.

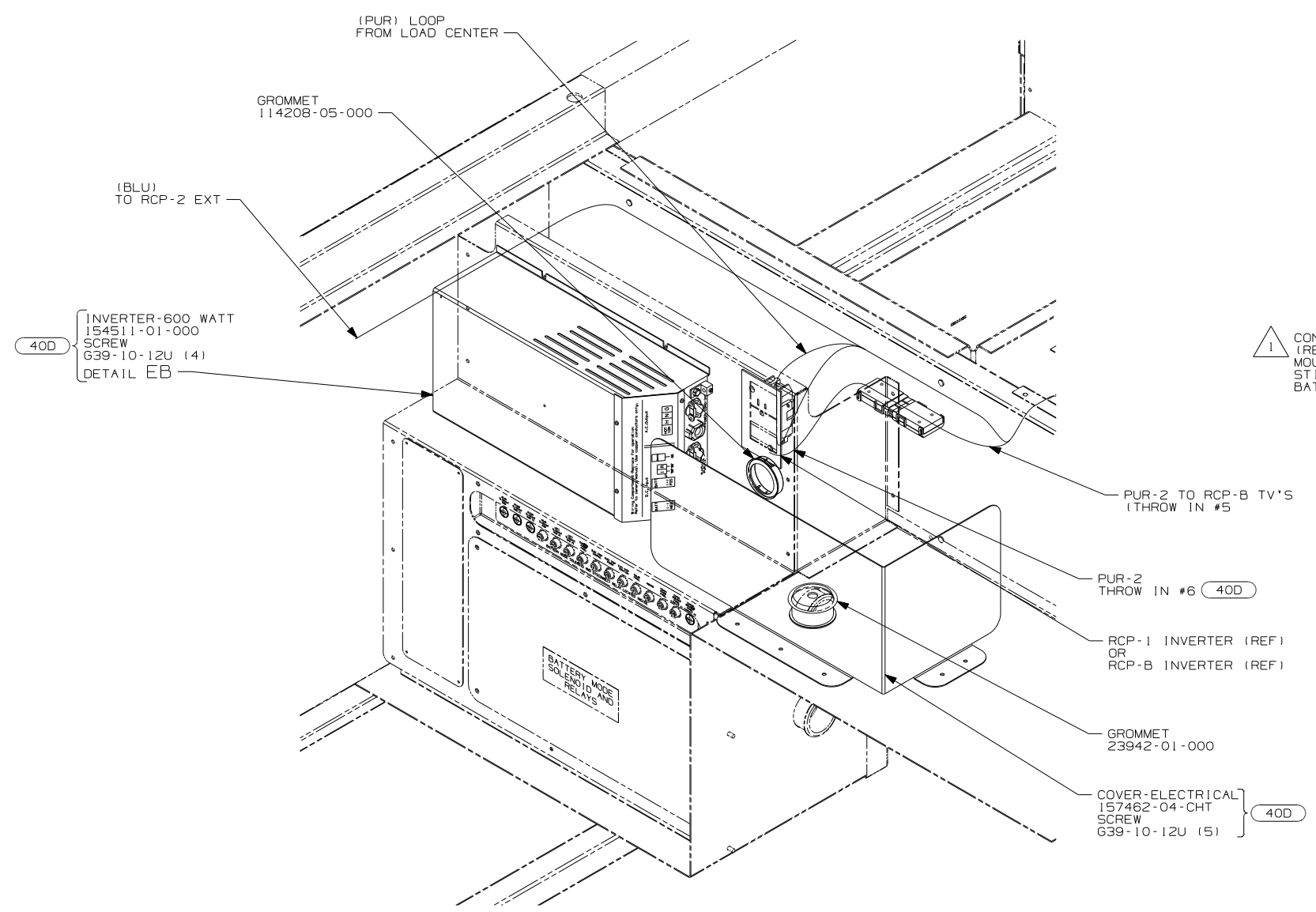


FOR ELECTRICAL TORQUE SPECIFICATIONS SEE DWG NO. 128783-01-000

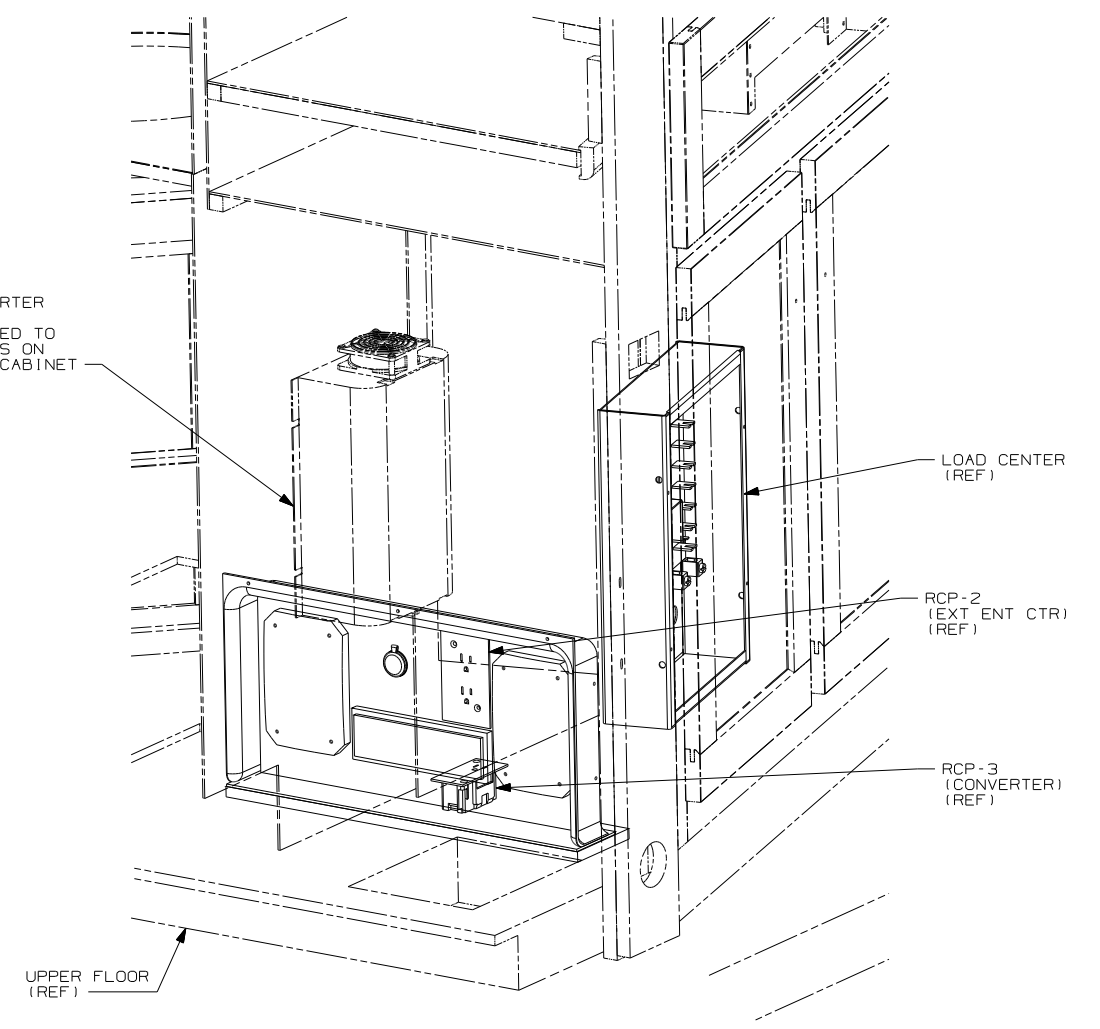
FOR ELECTRICAL CALLOUTS SEE DWG NO. 121339-01-000

- 49M SLEEP NUMBER BED-QUEEN SIZE
- 78J ELECTRICAL SYSTEM-50 AMP
- 265 CODES/STANDARDS-CSA/CMVSS
- 1B1 CODES/STANDARDS USA

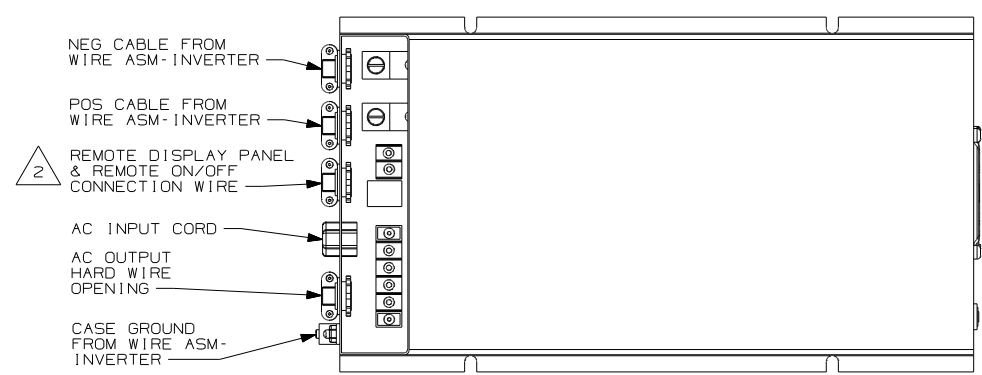
FIRST USED	
09 K32H	
DO NOT SCALE DRAWING	
TITLE: WIRING INSTL-BODY, 110V	
SHEET 4	PART NO 166039 REV



VIEW EA



VIEW EC



DETAIL EB

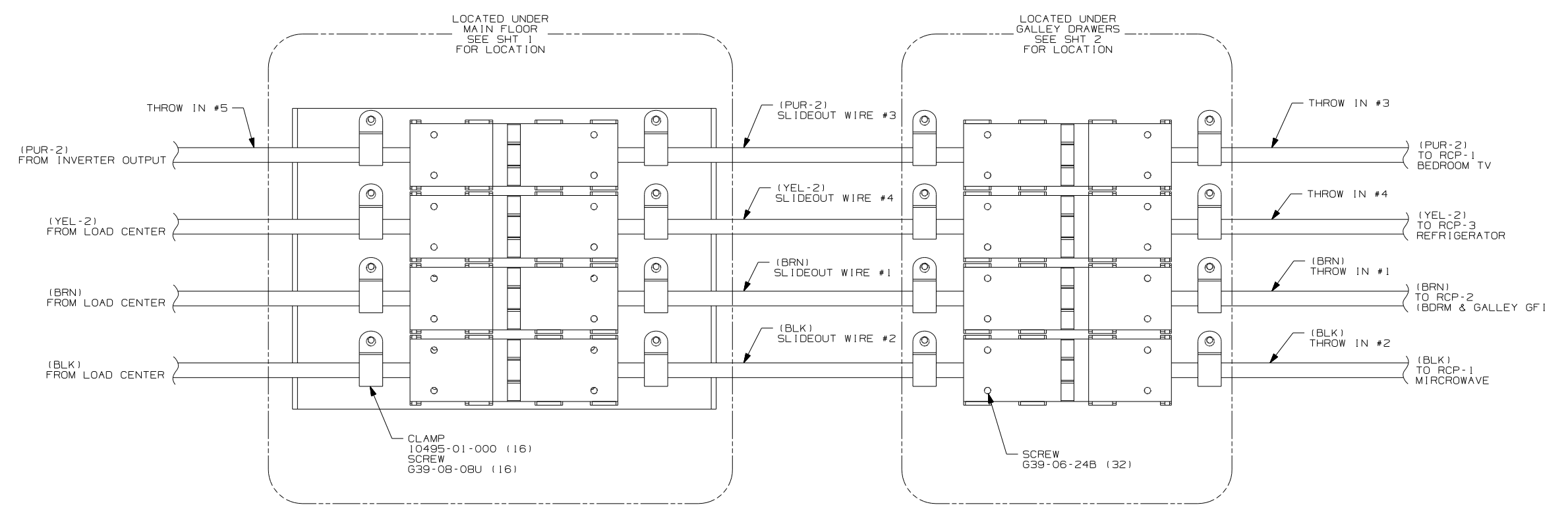
NOTES:
 2 WB FROM WIRE ASM-COACH TO PUR WIRE FROM INVERTER.
 1 SEE WIRING INSTL-BODY,12V FOR ADDITIONAL INFORMATION.

FOR ELECTRICAL TORQUE SPECIFICATIONS SEE DWG NO. 128783-01-000

FOR ELECTRICAL CALLOUTS SEE DWG NO. 121339-01-000

- (40D) INVERTER-DC/AC,600 WATT
- (78J) ELECTRICAL SYSTEM-50 AMP
- (265) CODES/STANDARDS-CSA/CMVSS
- (1B1) CODES/STANDARDS USA

FIRST USED	
09 K32H	
DO NOT SCALE DRAWING	
TITLE:	
WIRING INSTL-BODY,110V	
SHEET 5	PART NO 166039 REV



DETAIL FA

- 78J ELECTRICAL SYSTEM-50 AMP
- 265 CODES/STANDARDS-CSA/CMVSS
- 1B1 CODES/STANDARDS USA

1B1 265 78J

FOR ELECTRICAL
TORQUE
SPECIFICATIONS
SEE DWG NO.
128783-01-000

FOR
ELECTRICAL
CALLOUTS
SEE DWG NO.
121339-01-000

FIRST USED		09 K32H	
DO NOT SCALE DRAWING			
TITLE: WIRING INSTL-BODY, 110V			
SHEET 6	PART NO	166039	REV