

FRONT
OF
COACH

- (B1) CODES/STANDARDS USA
- (265) CODES/STANDARDS-CSA/CMVSS

- 9 VALVE TERMINATION TEE TO BE POSITIONED AT 10° DOWN AND OUTBOARD.
- 8 SECURE PIPES TO CABINET USING WIRE TIE 108046-02-000, AND SCREW G67-10-12B.
- 7 SECURE VENT TUBES TO FLOOR WITH CLAMP 62401-02-000 (2), SCREW G67-10-12B (2), BRACKET 136878-01-CHT (2).
- 6 VENT PIPE MUST PROJECT 51 MIN AND 64 MAX ABOVE ROOF FOR PROPER FIT AND FUNCTION.
- 5. SEAL AROUND SHOWER WITH SILICONE.
- 4 USE SMOOTH PLUMBERS PUTTY 167459-01-000 TO SEAL STRAINER (.2 PER STRAINER).
- 3. ALL PIPE AND FITTINGS TO BE ASSEMBLED WITH SOLVENT 4020-01-000 (USA), 4020-02-000 (CAN)
- 2. SLOPE OF TRAP ARM MUST BE 6 PER 305 mm.
- 1. SLOPE OF HORIZONTAL PIPING TO BE MIN 3 PER 305 mm.

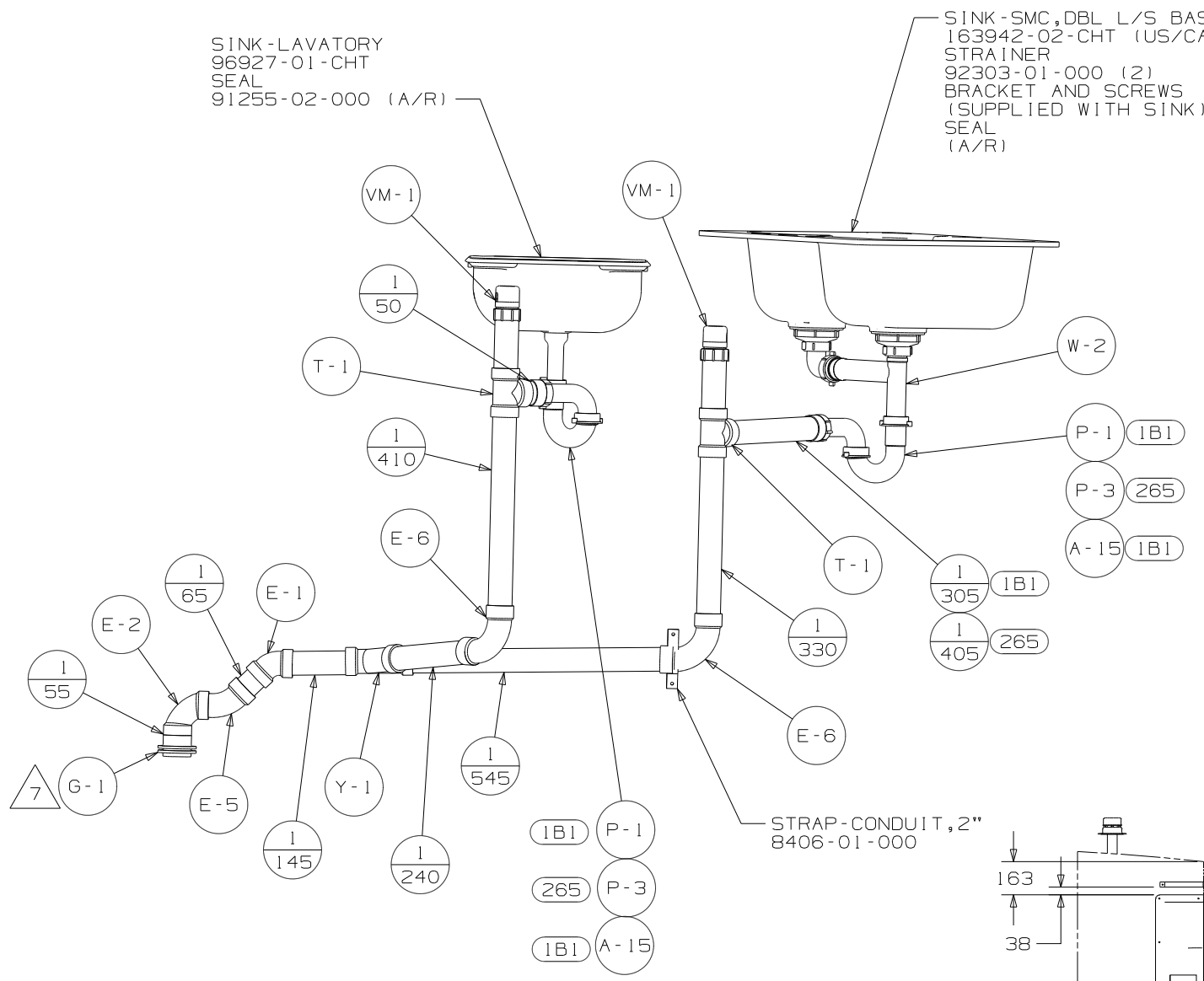
NOTES:

WINNEBAGO		COPYRIGHT 2008 WINNEBAGO INDUSTRIES, INC.	
DFTR	ORIG. DATE	ALL DIMENSIONS ARE IN MILLIMETERS	
CHKR		FIRST USED	
P.E.		09 E26P	
M.E.		UNSPECIFIED TOLERANCES ARE:	
DSNR		MATERIAL:	
		WHOLE DIM (X) : 3	
		ONE-PLACE (X.X) : 1.5	
		TWO-PLACE (X.XX) : 0.50	
		ANGLE : 1°	
		THIRD ANGLE PROJECTION	
DO NOT SCALE DRAWING			
TITLE: DRAINAGE SYSTEM INSTL			
SHEET 1 OF 4	PART NO	167506	REV

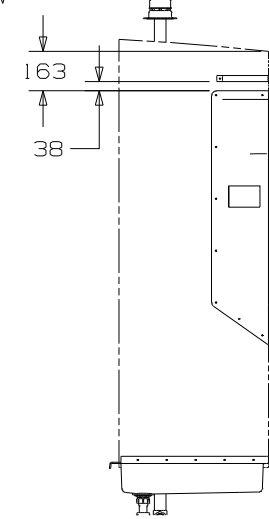
(X-X)
FOR
DRAINAGE
CALLOUTS
SEE DWG NO
116229-01-000

SINK-LAVATORY
96927-01-CHT
SEAL
91255-02-000 (A/R)

SINK-SMC, DBL L/S BASIN
163942-02-CHT (US/CAN)
STRAINER
92303-01-000 (2)
BRACKET AND SCREWS
(SUPPLIED WITH SINK)
SEAL
(A/R)

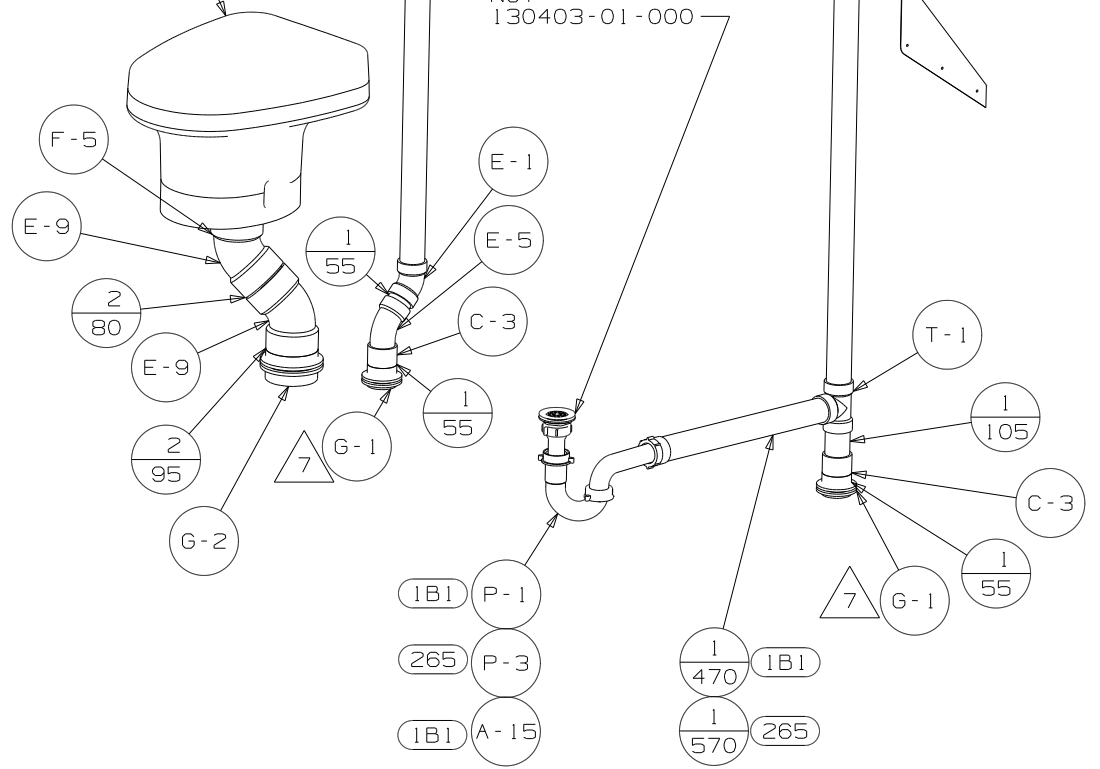


VIEW A



VIEW B

TOILET-AM 5, HIGH, W/O SPRAYER
147421-05-CHT



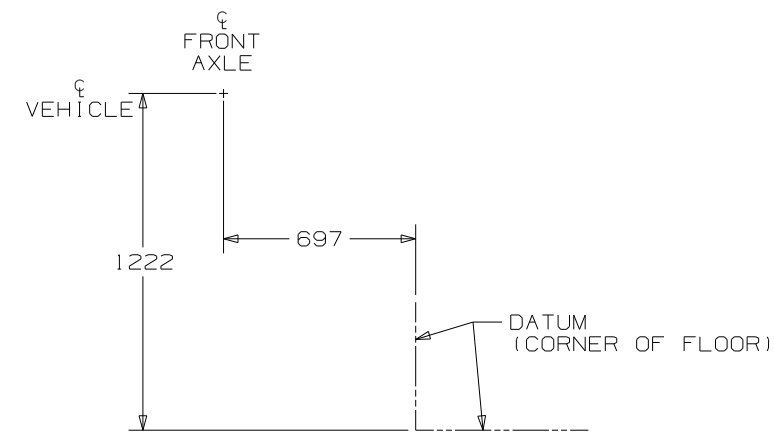
VIEW C

SHOWER PAN
127586-02-CHT
SCREW
G11-08-12U (10)
G39-08-12U (6)
STRAINER
66440-01-000
SEALER
69640-01-000
WASHER-RUBBER
127440-02-CHT
TAILPIECE
11069-02-000
NUT
130403-01-000

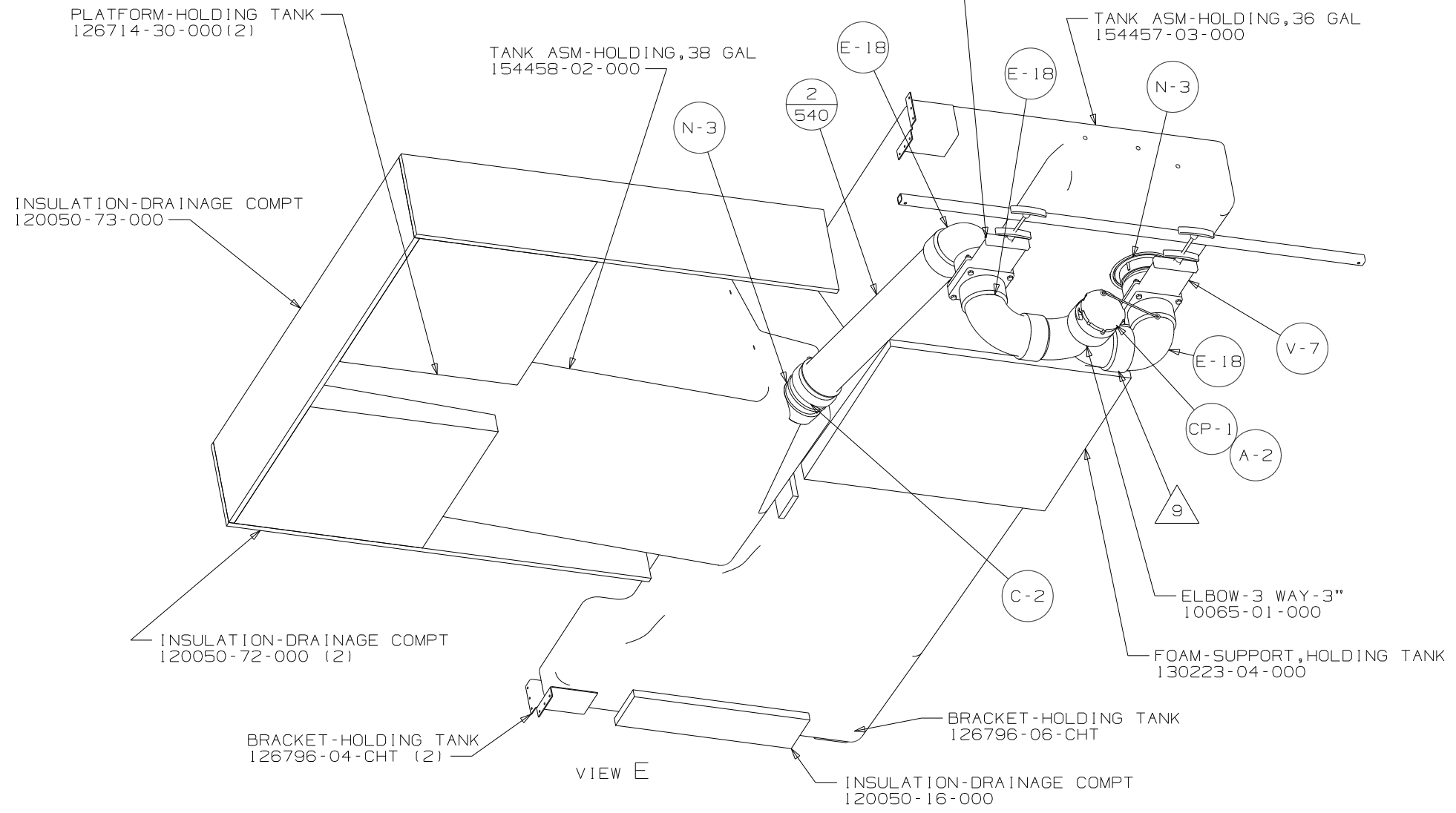
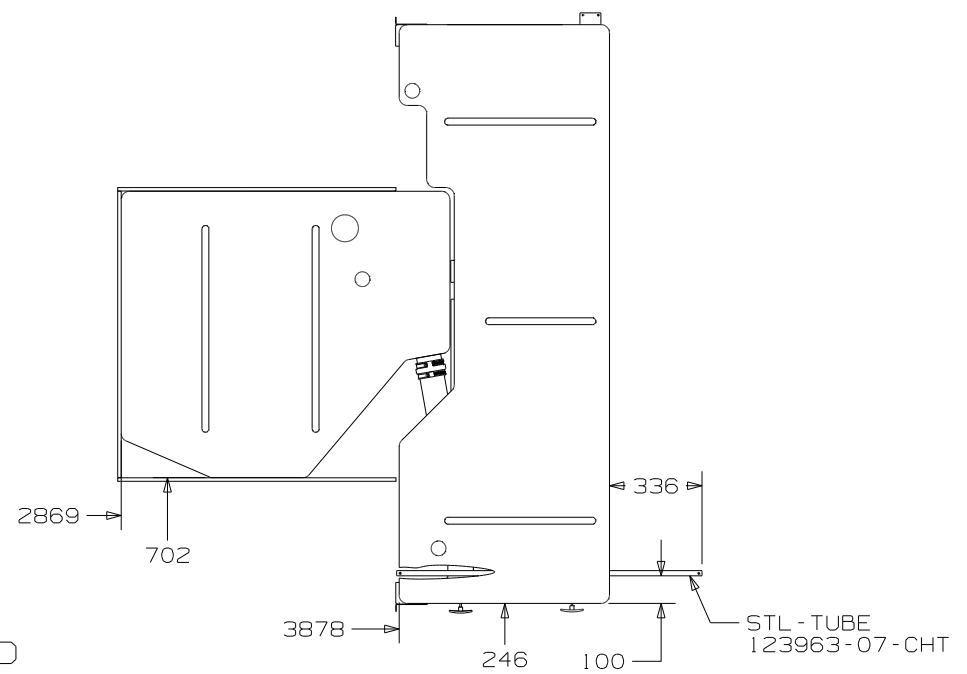
RETAINER-SHELF-SHWR
113714-02-CHT
G11-08-12U
G39-08-12U
COVER
166569-01-CHT (2)

CADDY
105707-01-CHT
SCREW
G11-08-12U (8)
G39-08-12U (8)
COVER
166569-01-CHT (16)

FIRST USED	09 E26P
DO NOT SCALE DRAWING	
TITLE:	DRAINAGE SYSTEM INSTL
SHEET 2	PART NO 167506 REV

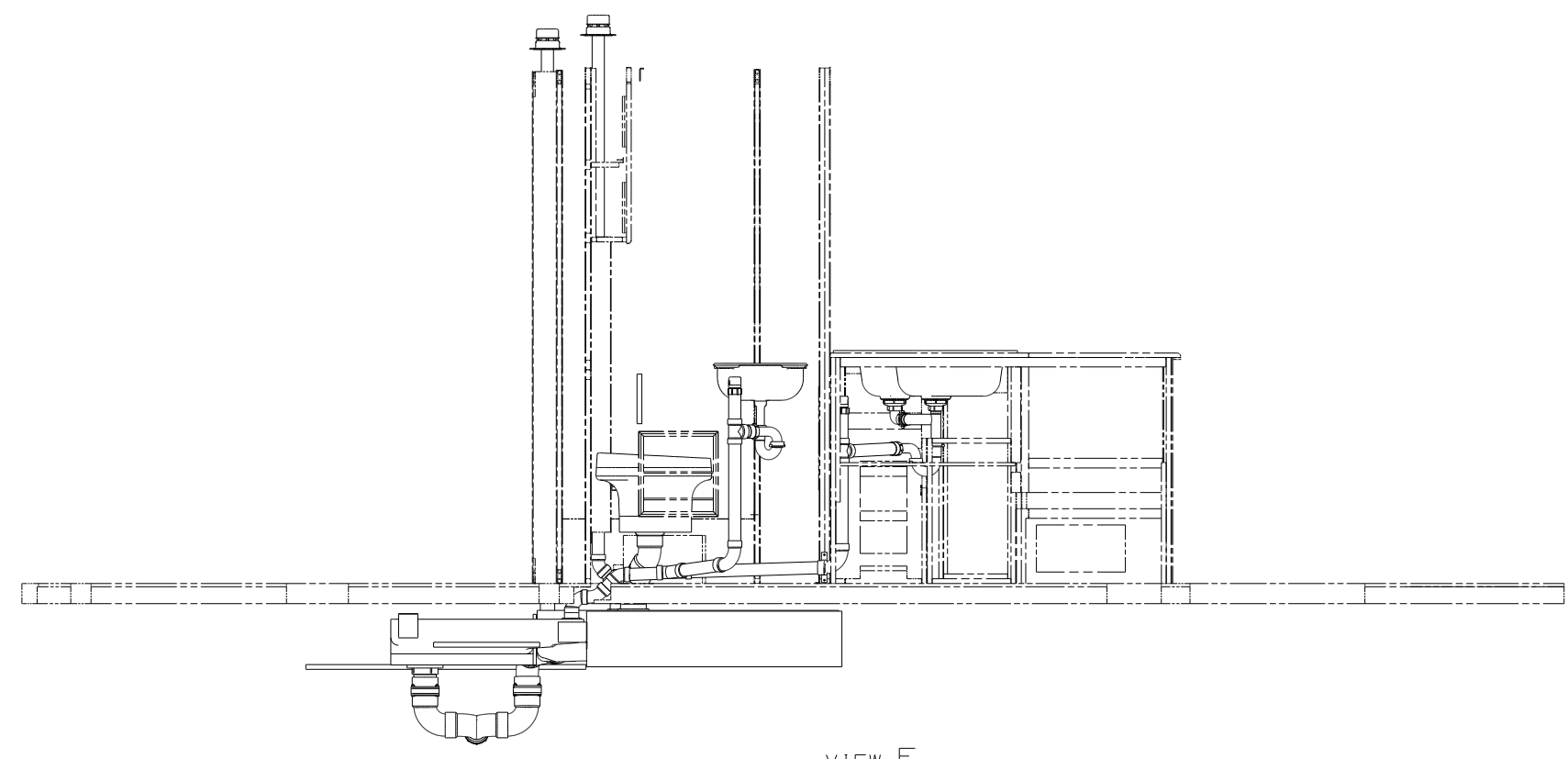


VIEW D

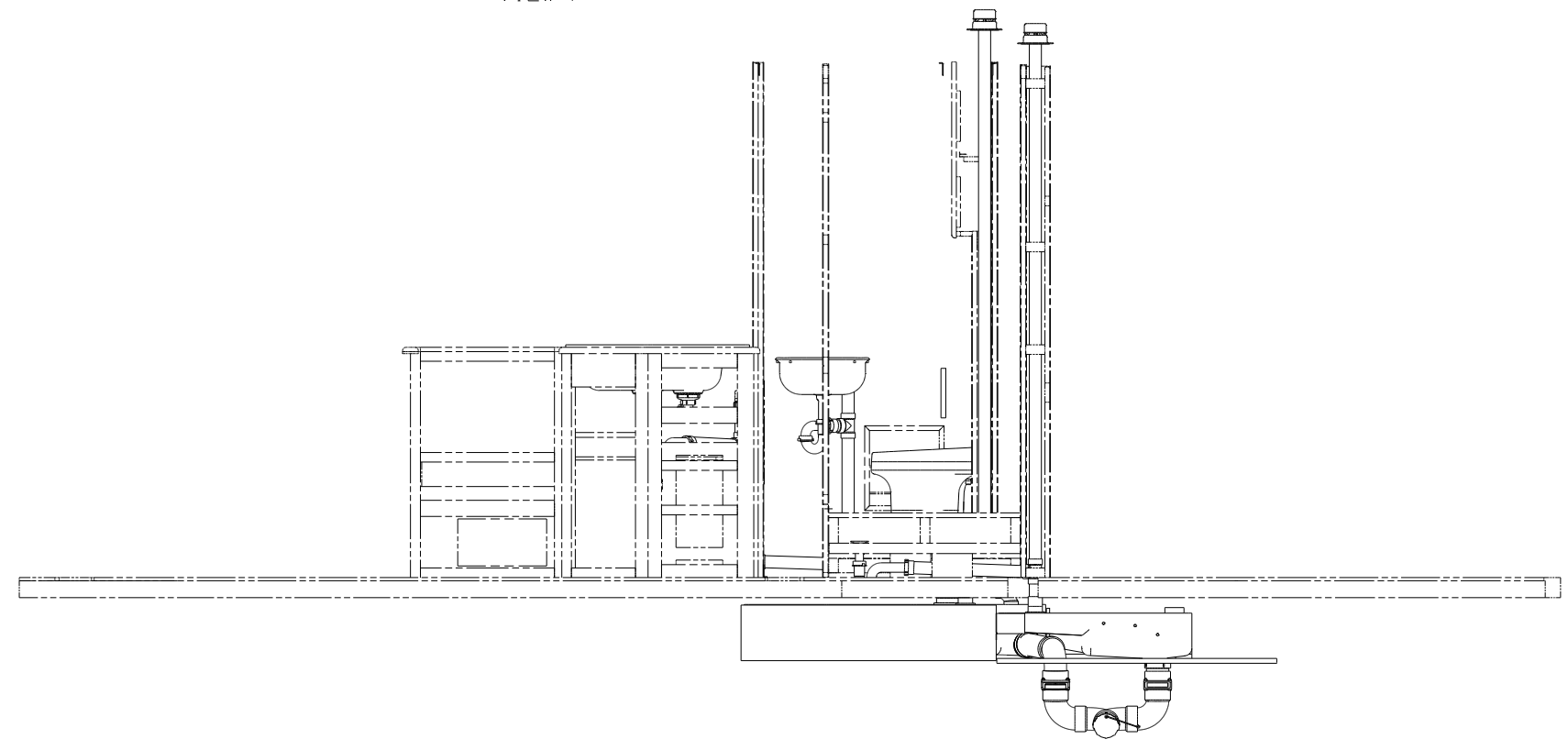


VIEW E

FIRST USED	09 E26P	
TITLE	DO NOT SCALE DRAWING	
	DRAINAGE SYSTEM INSTL	
SHEET 3	PART NO 167506	REV

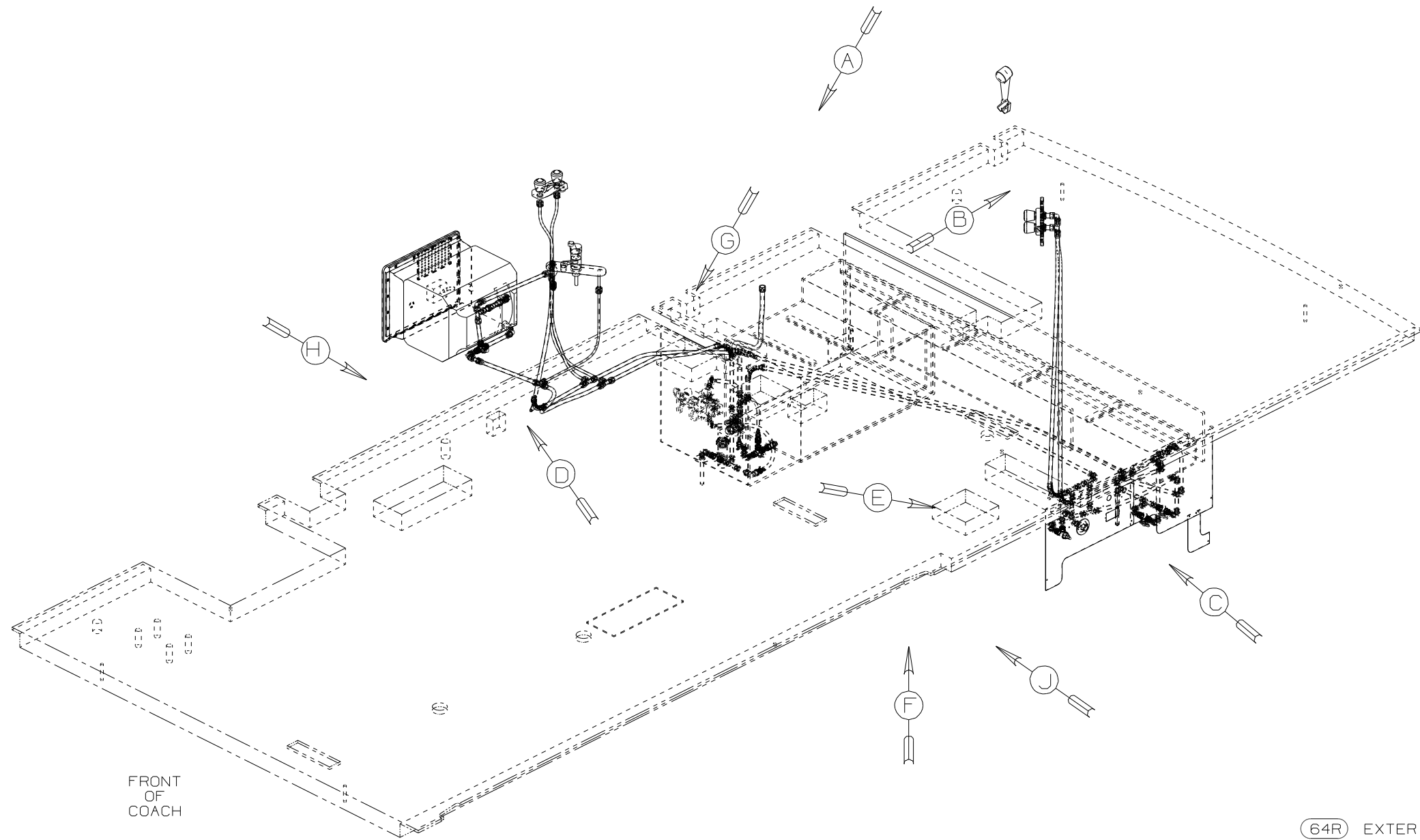


VIEW F



VIEW G

FIRST USED	09 E26P	
TITLE	DO NOT SCALE DRAWING	
	DRAINAGE SYSTEM INSTL	
SHEET 4	PART NO 167506	REV



FRONT OF COACH

- (64R) EXTERIOR WASH STATION
- (IJ4) EXTERIOR WASH STATION W/O

- NOTES:
1. PLASTIC FITTINGS TO BE SEALED WITH SEALANT 84456-01-000.
 2. TUBING TO BE INSTALLED WITH SUFFICIENT SLOPE TO PROVIDE DRAINAGE TO NEAREST VALVE.
 3. ALL TUBING TO BE SECURED AT 1200 INTERVALS MAXIMUM WITH CLAMP 10495-01-000 AND SCREW G67-10-12B OR EQUIVALENT.
 4. ADD TEFLON TAPE 10405-02-000.
 5. ADD TEFLON TAPE 10405-01-000.
 6. ADD PIPE WRAP (LADDER SCRAP 110157-02) INSULATION HERE.

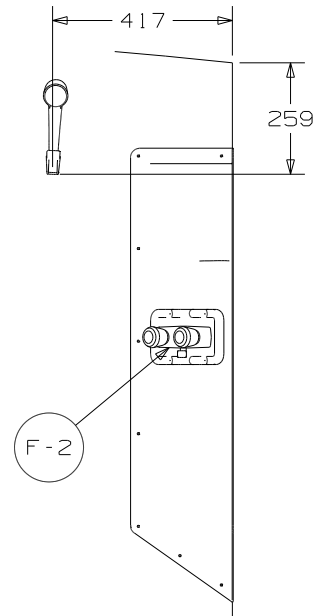
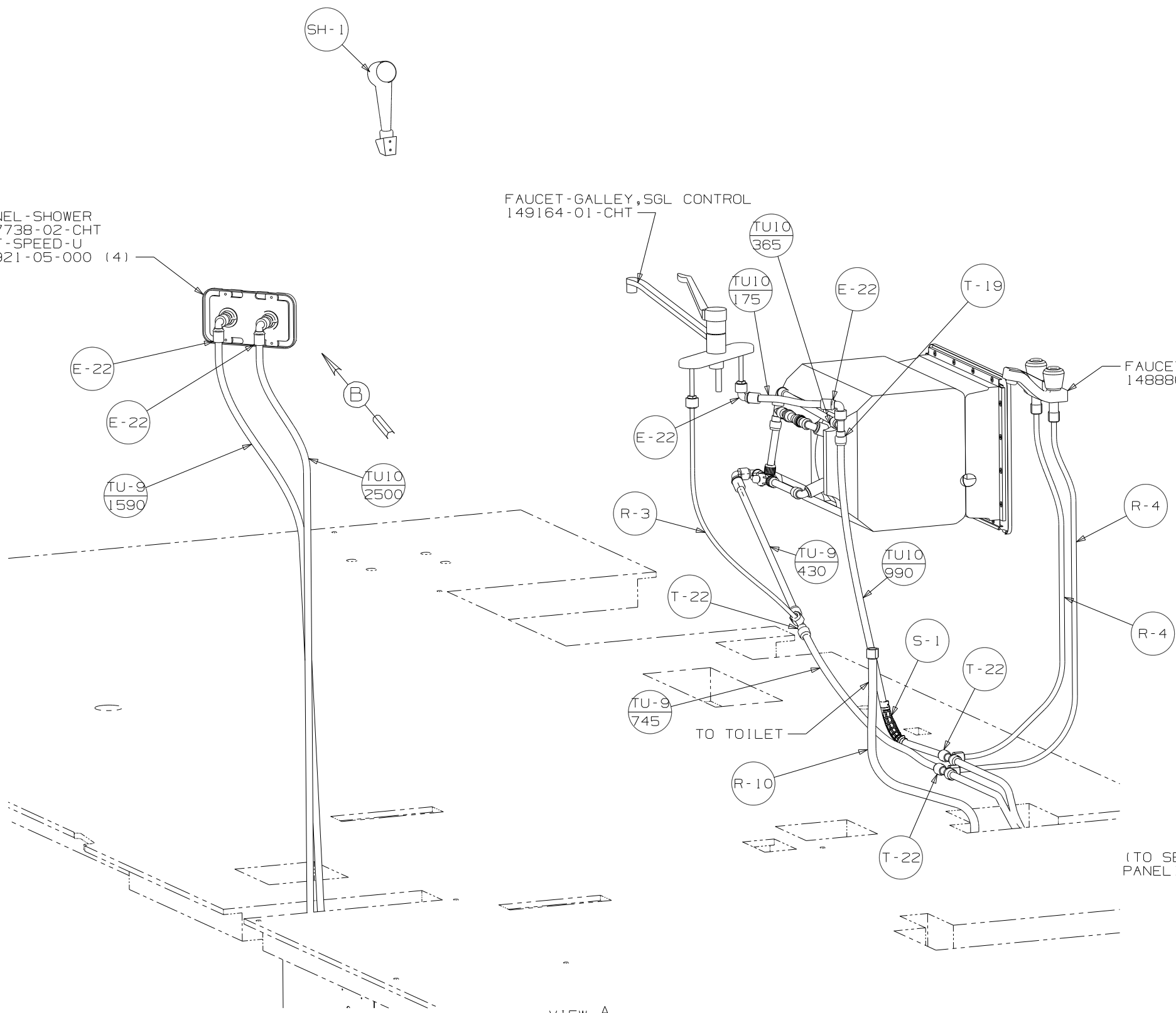
WINNEBAGO		COPYRIGHT 2009 WINNEBAGO INDUSTRIES, INC.	
DFTR	ORIG. DATE	ALL DIMENSIONS ARE IN MILLIMETERS	
CHKR		FIRST USED	
P.E.		09 E26P	
M.E.		UNSPECIFIED TOLERANCES ARE:	
DSNR		MATERIAL:	
		WHOLE DIM (X)	: 3
		ONE-PLACE (X.X)	: 1.5
		TWO-PLACE (X.XX)	: 0.50
		ANGLE	: 1°
THIRD ANGLE PROJECTION		DO NOT SCALE DRAWING	
TITLE: WATER SYSTEM INSTL			
SHEET 1 OF 5	PART NO	167507	REV

(X-X)
FOR
WATER
CALLOUTS
SEE DWG NO
116230-01-000

PANEL - SHOWER
167738-02-CHT
NUT - SPEED-U
40921-05-000 (4)

FAUCET - GALLEY, SGL CONTROL
149164-01-CHT

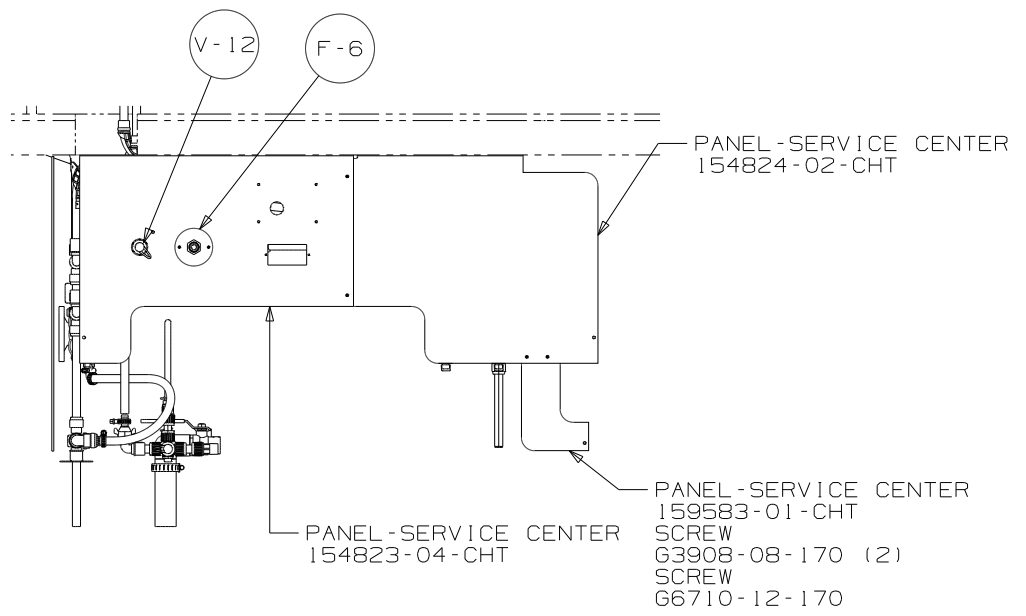
FAUCET - LAV, DUAL CONTROL
148886-01-CHT



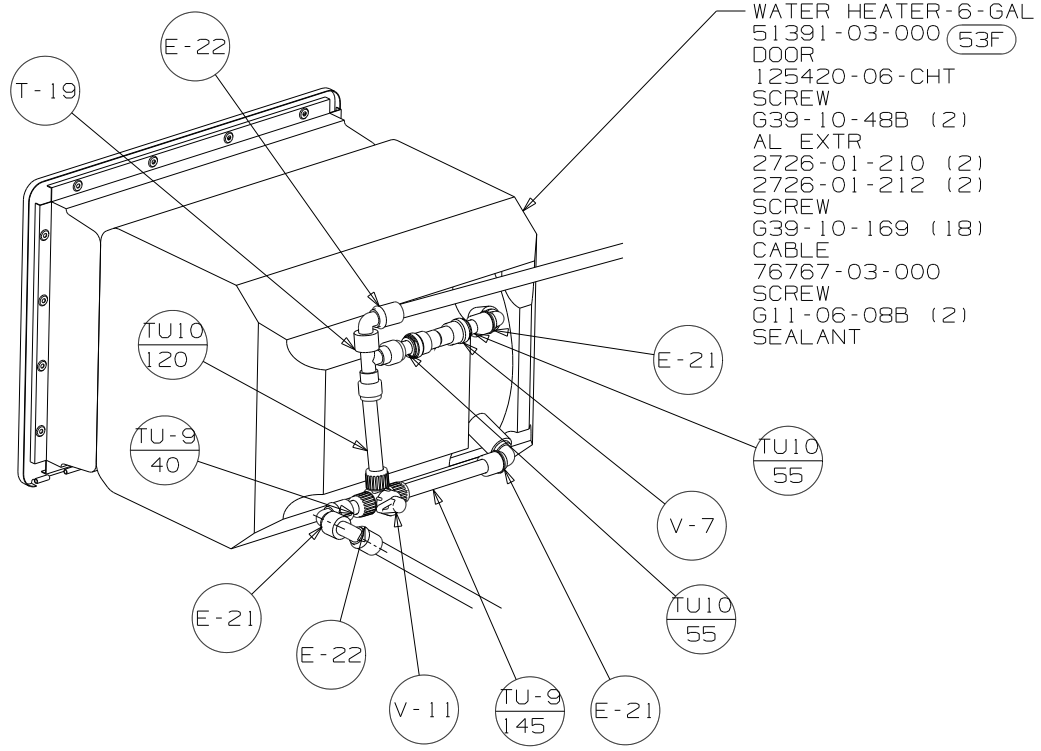
VIEW B

VIEW A

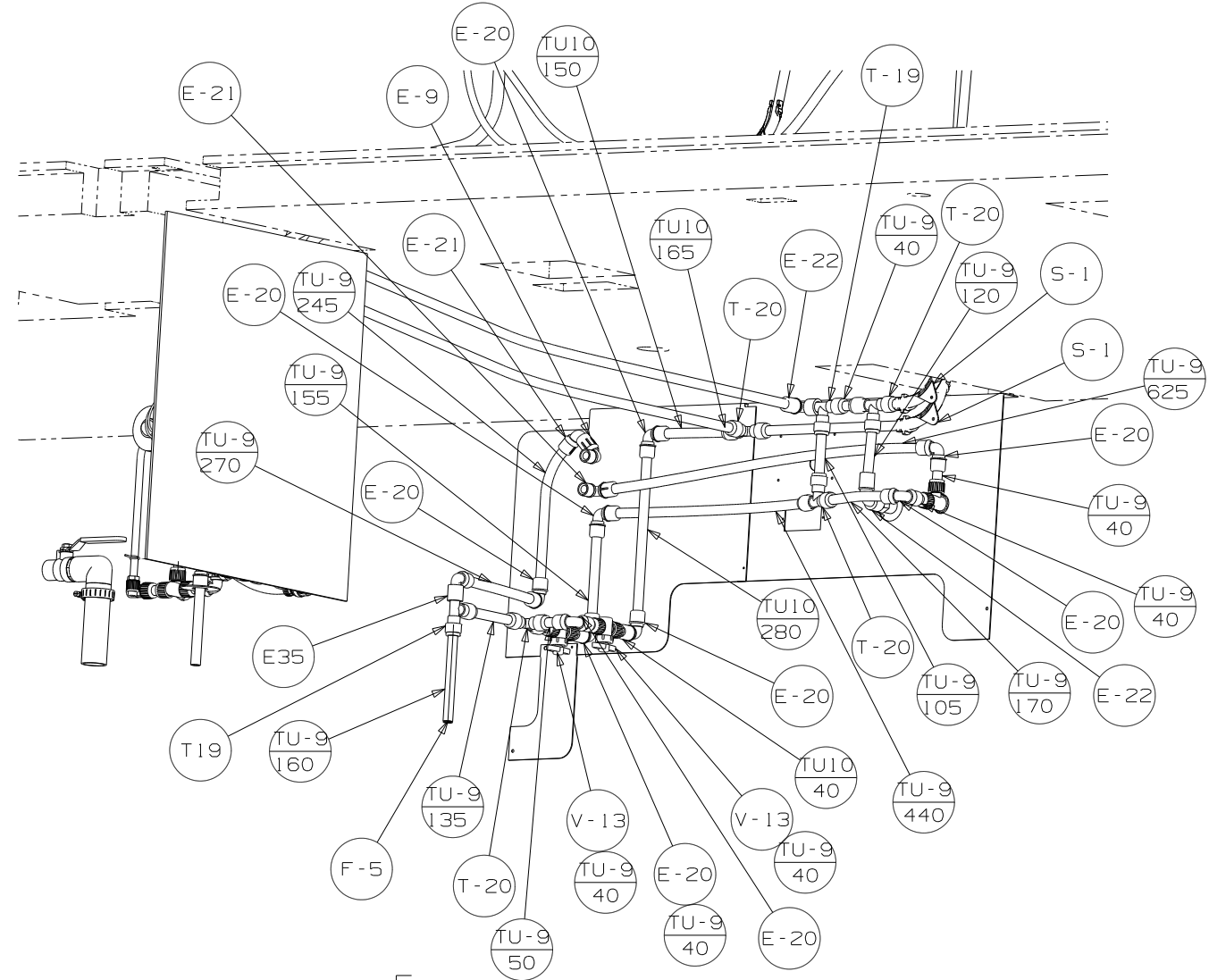
FIRST USED	09 E26P		
TITLE:	DO NOT SCALE DRAWING		
SHEET 2	PART NO	167507	REV
			1 6/2/2009



VIEW C

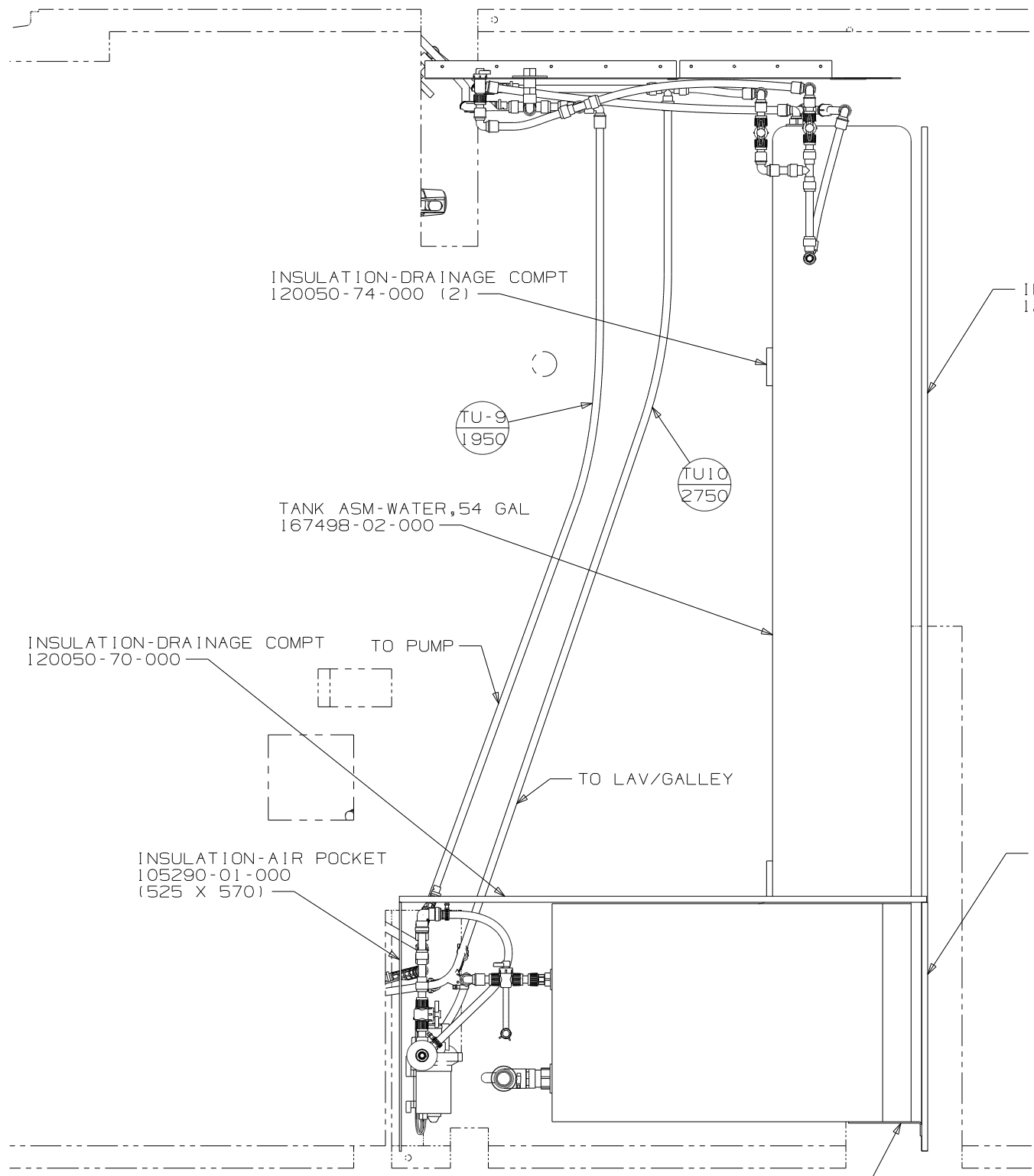


VIEW D

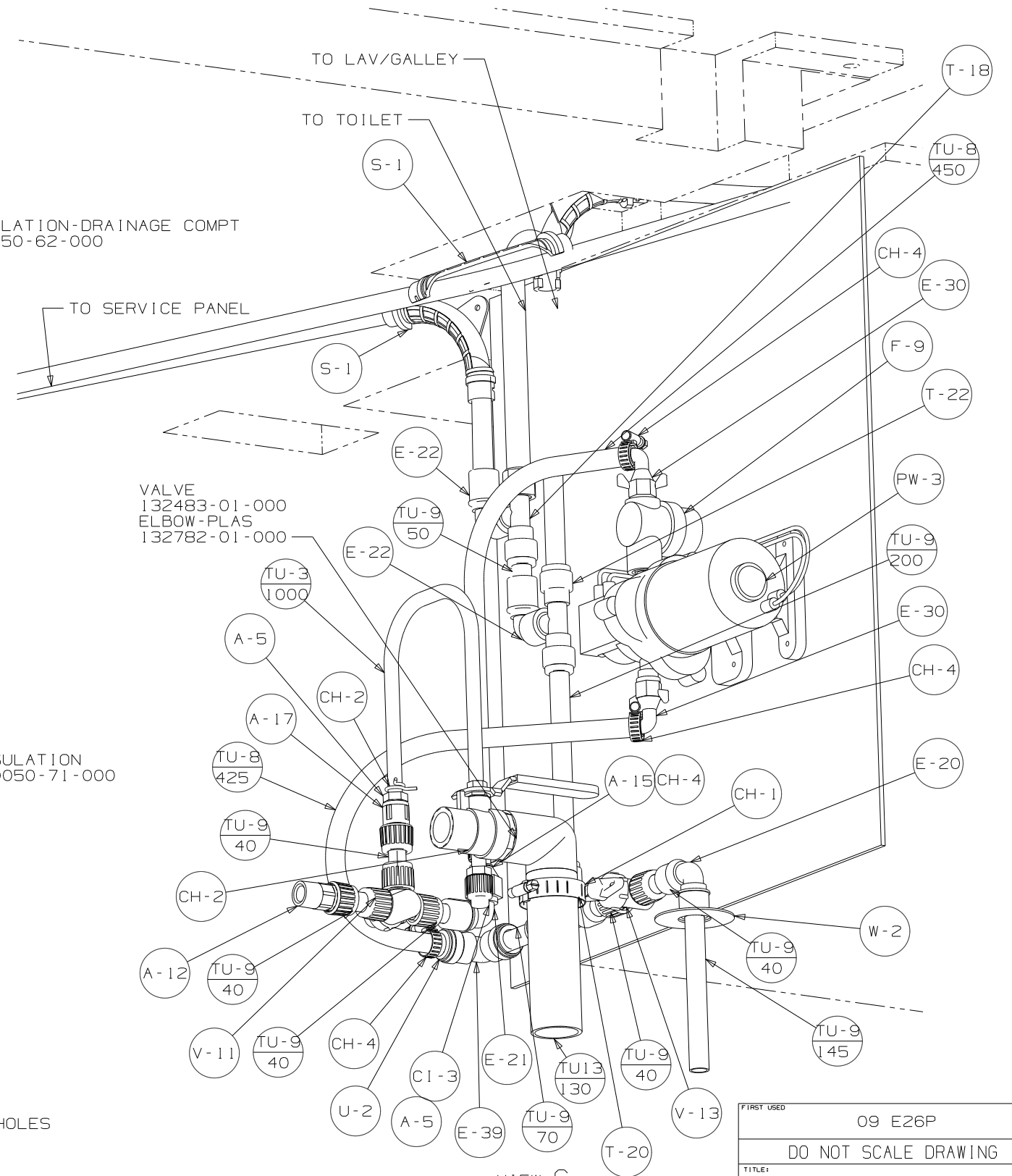


VIEW E

FIRST USED	09 E26P	
TITLE:	DO NOT SCALE DRAWING	
SHEET 3	PART NO	167507
	REV	1 6/2/2009



VIEW F



VIEW G
(TANK NOT SHOWN)

FIRST USED	09 E26P	
TITLE	DO NOT SCALE DRAWING	
TITLE	WATER SYSTEM INSTL	
SHEET 4	PART NO	167507
	REV	

8

7

6

5

4

3

2

1

D

D

C

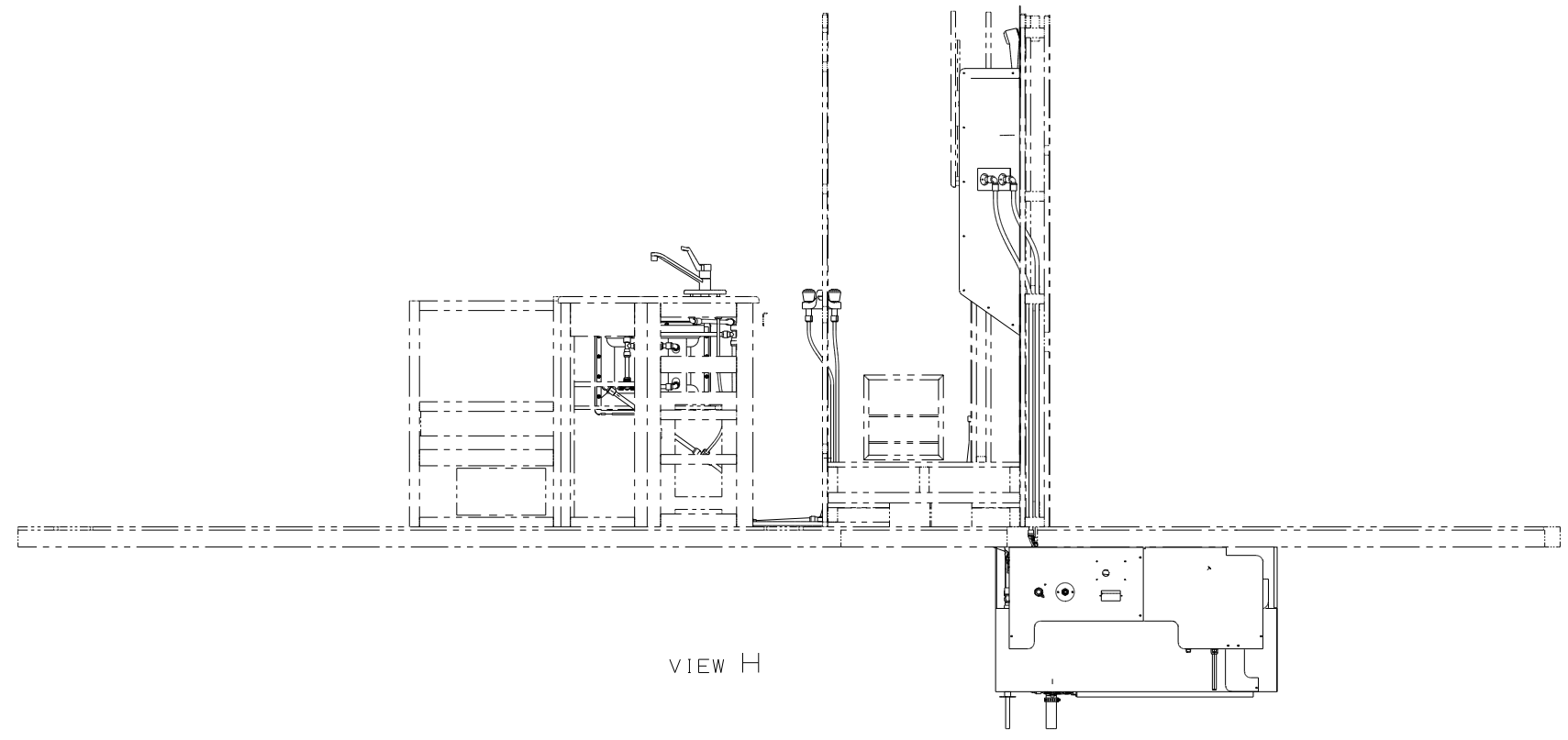
C

B

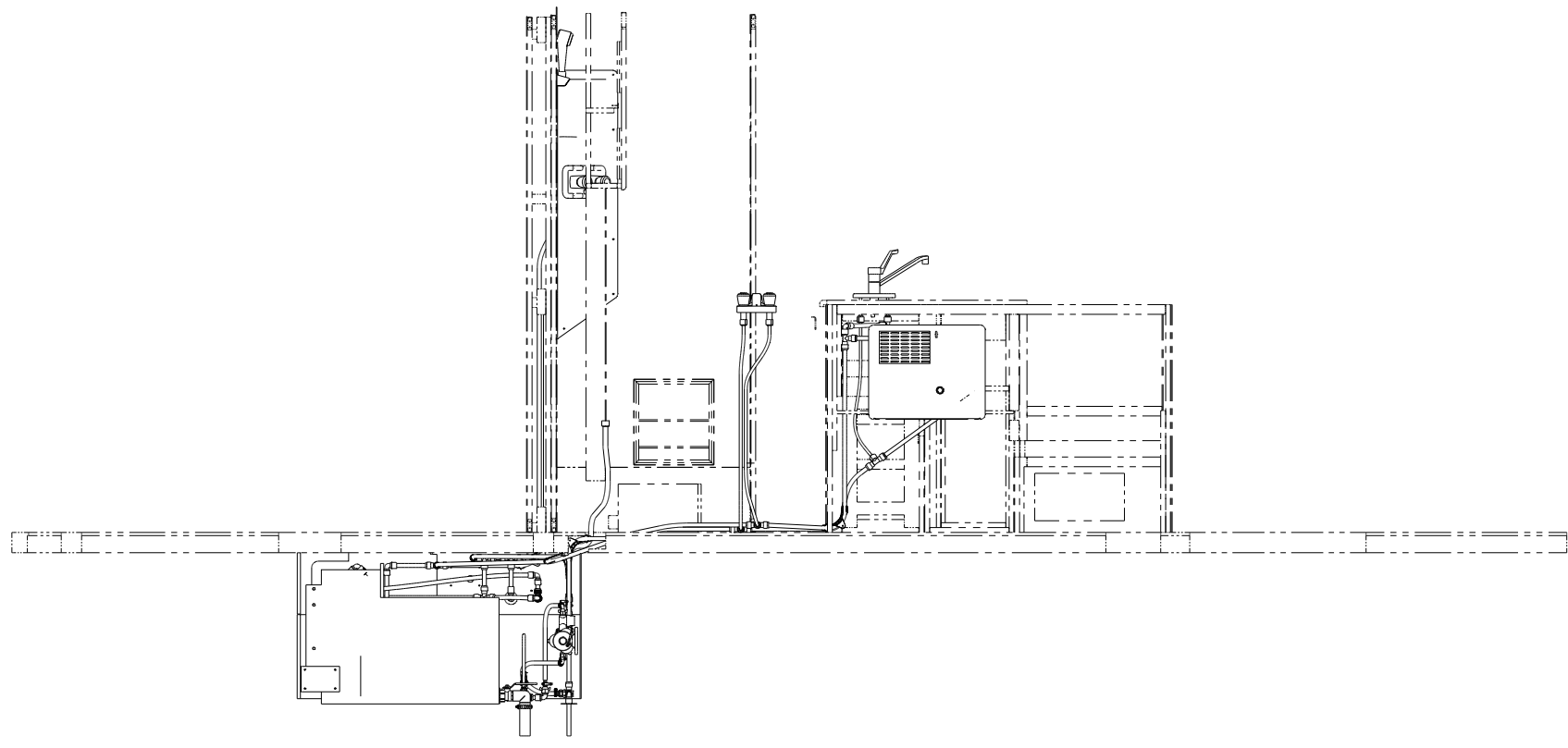
B

A

A



VIEW H



VIEW J



FIRST USED	09 E26P		
TITLE	DO NOT SCALE DRAWING		
TITLE	WATER SYSTEM INSTL		
SHEET 5	PART NO	167507	REV

8

7

6

5

4

3

2

1