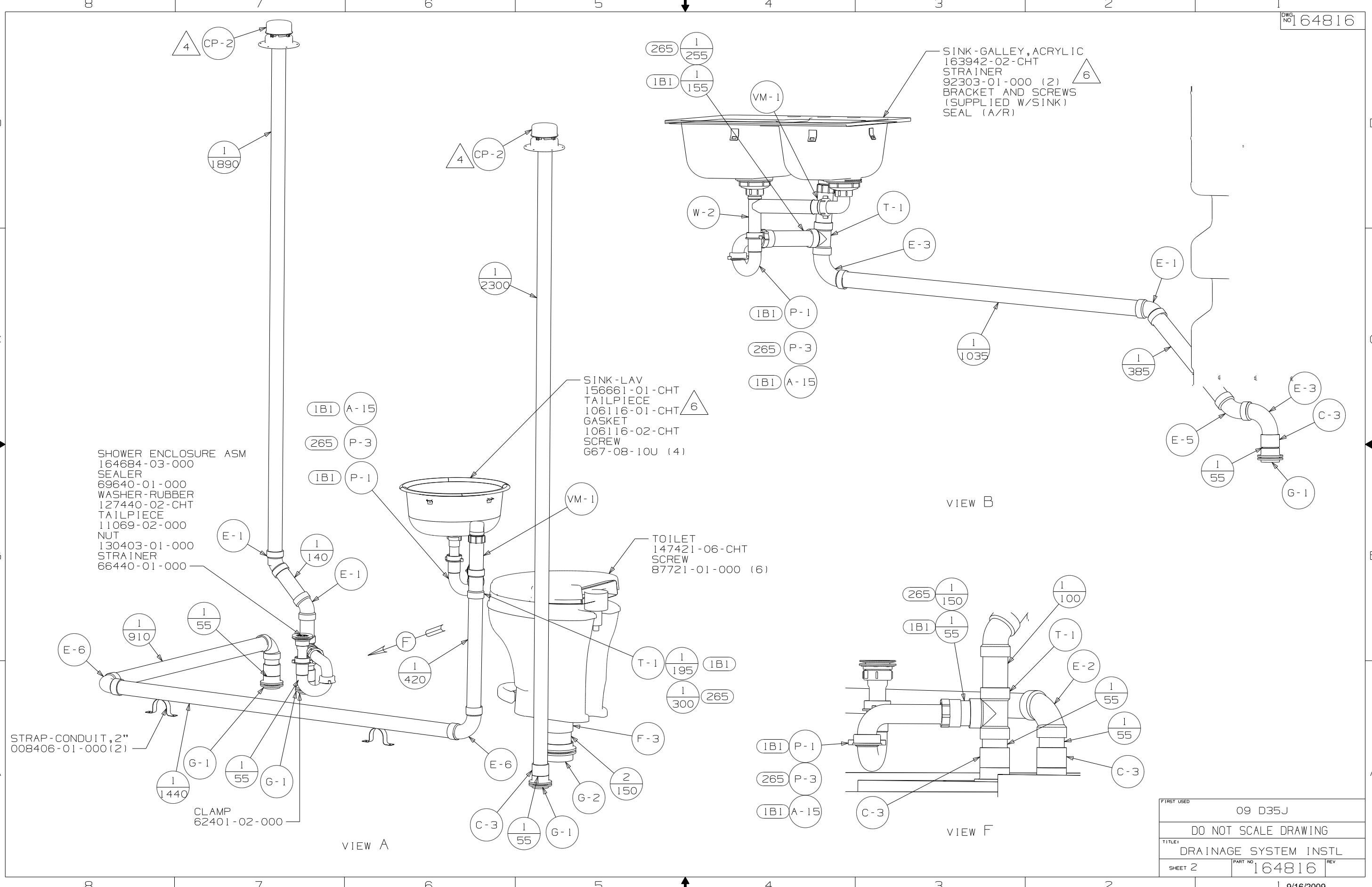


- NOTES:
- 6. USE SMOOTH PLUMBERS PUTTY 167459-01-000 TO SEAL STRAINER(.2 PER STRAINER)
  - 5. SEAL AROUND SHOWER WITH SILICONE.
  - 4. VENT PIPE MUST PROJECT 51 MIN AND 64 MAX ABOVE ROOF FOR PROPER FIT AND FUNCTION.
  - 3. ALL PIPE AND FITTINGS TO BE ASSEMBLED WITH SOLVENT 4020-01-000 (US) 4020-02-000 (CAN).
  - 2. SLOPE OF TRAP ARM MUST BE 6 PER 305 mm.
  - 1. SLOPE OF HORIZONTAL PIPING TO BE MIN 6 PER 305 mm.

(B1) CODES/STANDARDS-USA  
 (265) CODES/STDA-CSA/CMVSS

<b>WINNEBAGO</b>		COPYRIGHT 2009 WINNEBAGO INDUSTRIES, INC.	
DFT-0R	ORIG. DATE	ALL DIMENSIONS ARE IN MILLIMETERS	
CHKR		MATERIAL:	
P.E.		WHOLE DIM (X)	: 3
M.E.	FIRST USED	ONE-PLACE (X.X)	:
DSNR	09 D35J	TWO-PLACE (X.XX)	:
UNSPECIFIED TOLERANCES ARE:		ANGLE	:
		THIRD ANGLE PROJECTION	⊕
DO NOT SCALE DRAWING			
TITLE: DRAINAGE SYSTEM INSTL			
SHEET 1 OF 3	PART NO	164816	REV
REF:	1 9/16/2009		

(X-X)  
 FOR  
 DRAINAGE  
 CALLOUTS  
 SEE DWG NO  
 116229-01-000



SHOWER ENCLOSURE ASM  
164684-03-000  
SEALER  
69640-01-000  
WASHER-RUBBER  
127440-02-000  
TAILPIECE  
11069-02-000  
NUT  
130403-01-000  
STRAINER  
66440-01-000

SINK-LAV  
156661-01-000  
TAILPIECE  
106116-01-000  
GASKET  
106116-02-000  
SCREW  
667-08-10U (4)

SINK-GALLEY, ACRYLIC  
163942-02-000  
STRAINER  
92303-01-000 (2)  
BRACKET AND SCREWS  
(SUPPLIED W/SINK)  
SEAL (A/R)

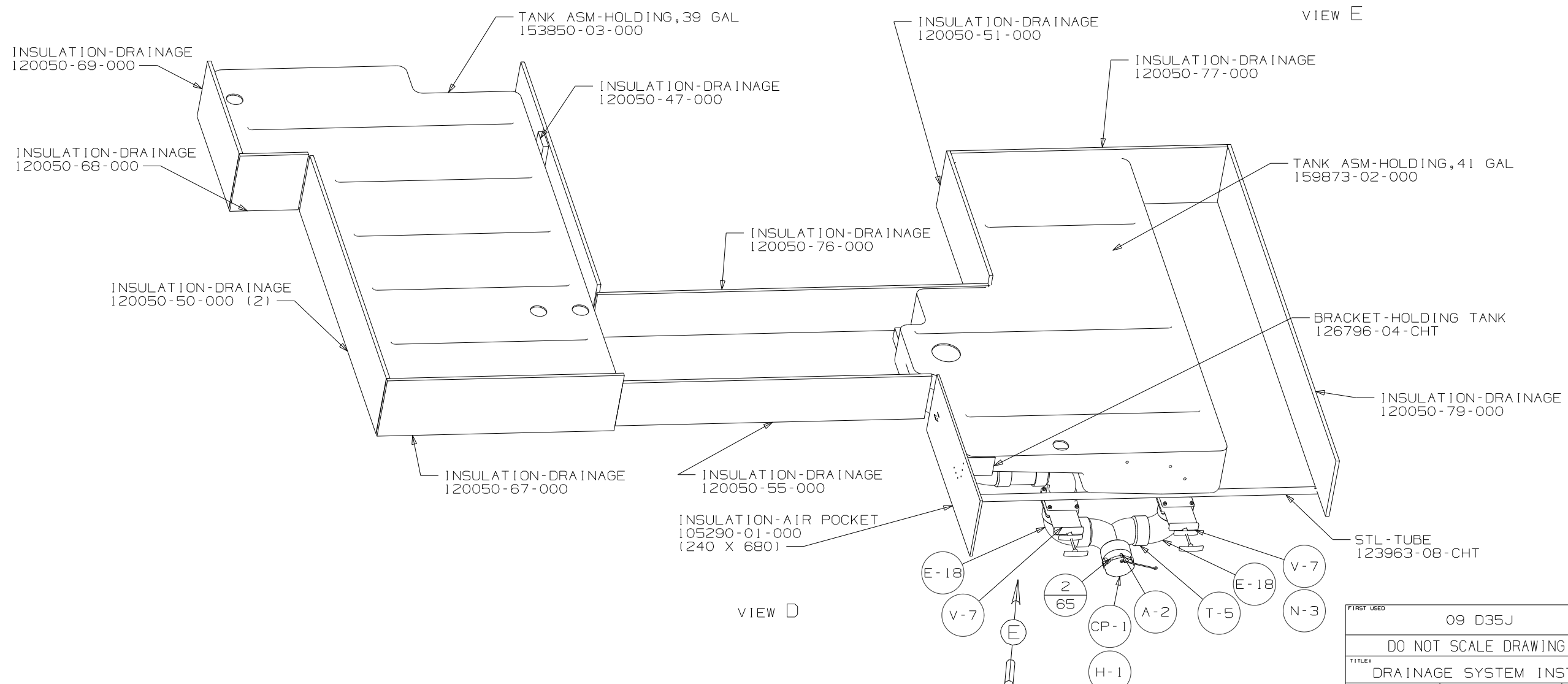
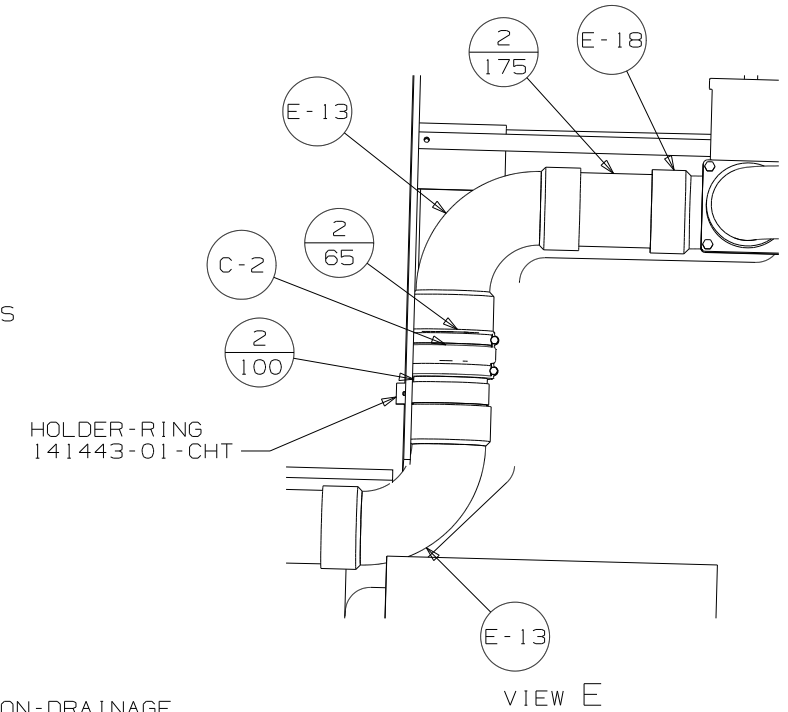
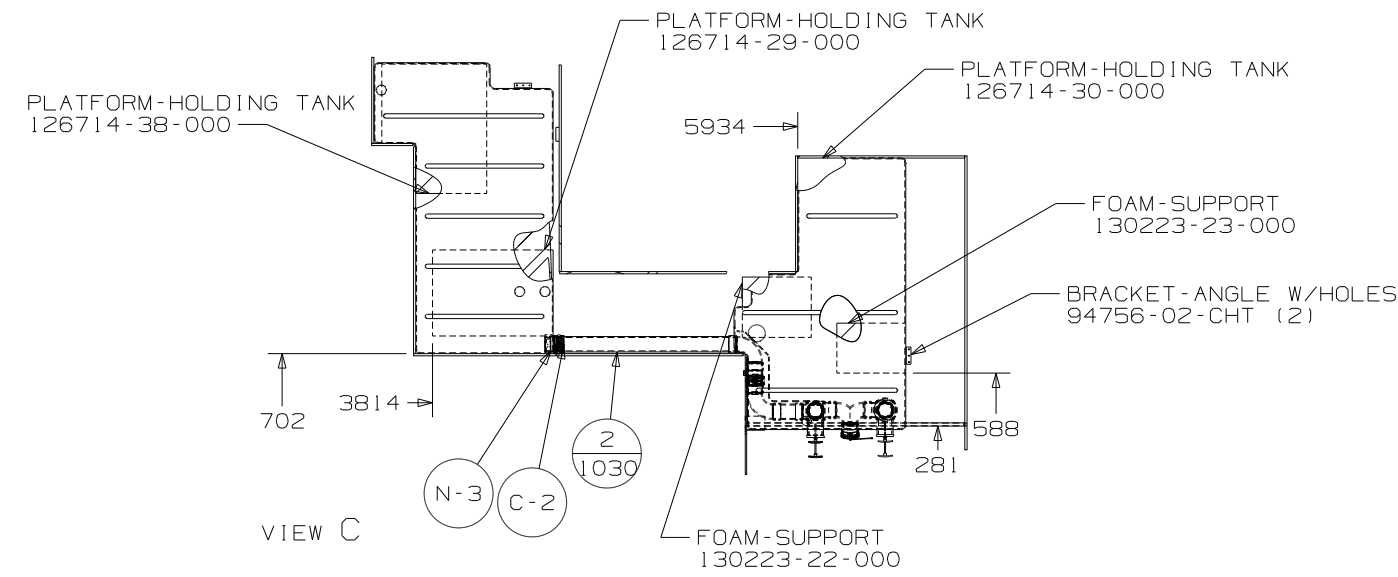
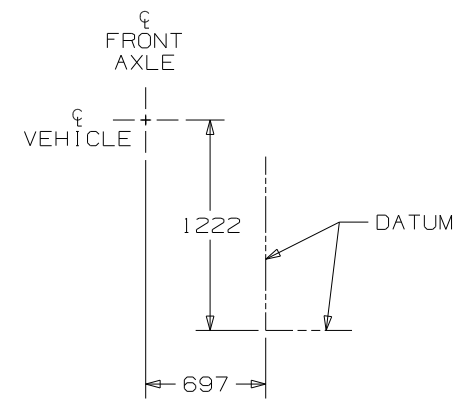
TOILET  
147421-06-000  
SCREW  
87721-01-000 (6)

VIEW A

VIEW B

VIEW F

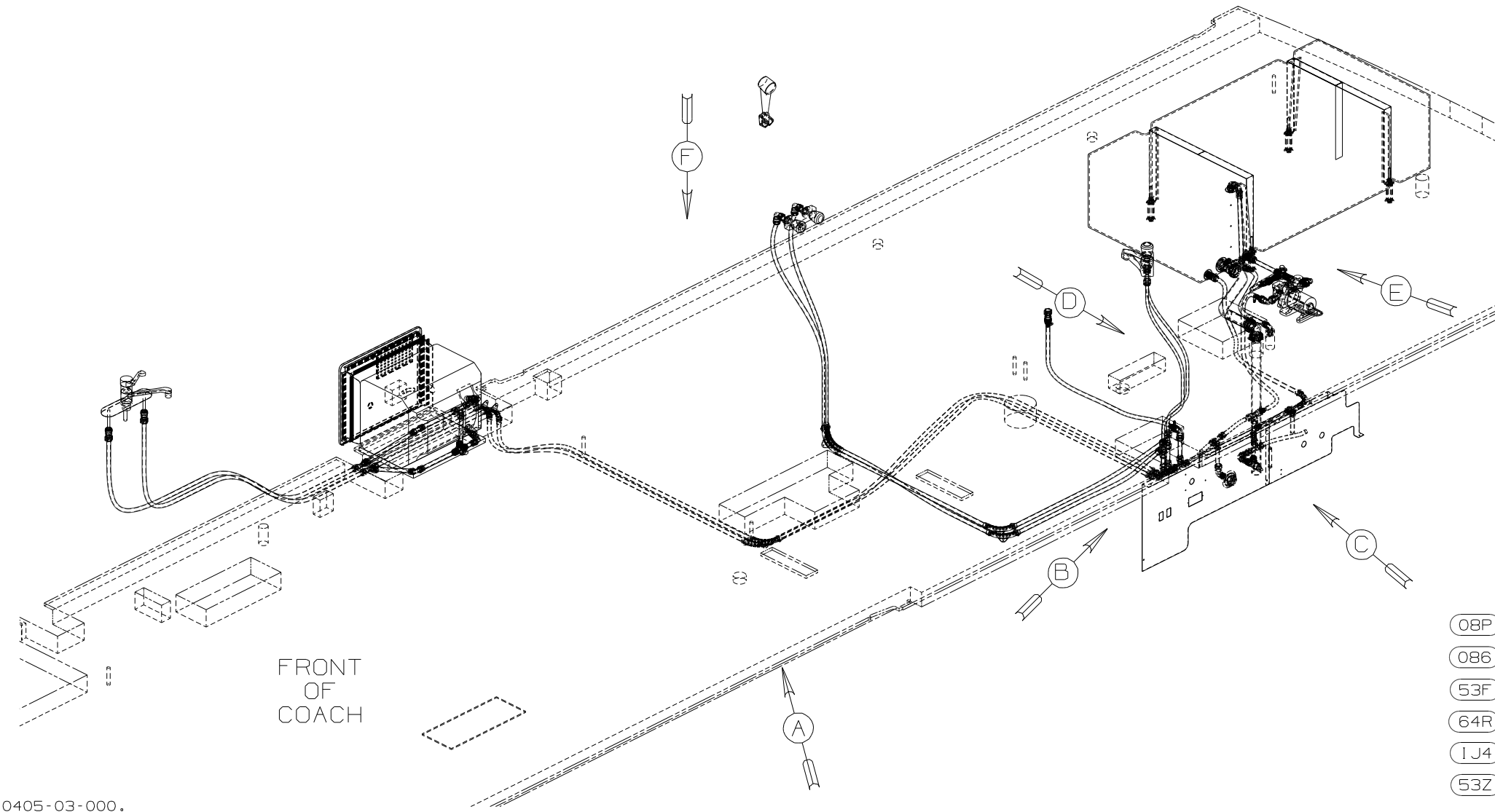
FIRST USED	09 D35J	
TITLE	DO NOT SCALE DRAWING	
	DRAINAGE SYSTEM INSTL	
SHEET 2	PART NO 164816	REV



FIRST USED	09 D35J		
TITLE	DO NOT SCALE DRAWING		
	DRAINAGE SYSTEM INSTL		
SHEET 3	PART NO	164816	REV

DWG NO	PANEL-SERVICE CENTER	FAUCET-LAV DUAL CONT
164815-01	154823-03-CHT	148886-01-CHT
164815-02	154823-06-CHT	148886-03-CHT

RELEASE	REV DATE	DWG NO
	A	164815
REV ZONE	REVISION RECORD	DATE
		DFTR-ORIG



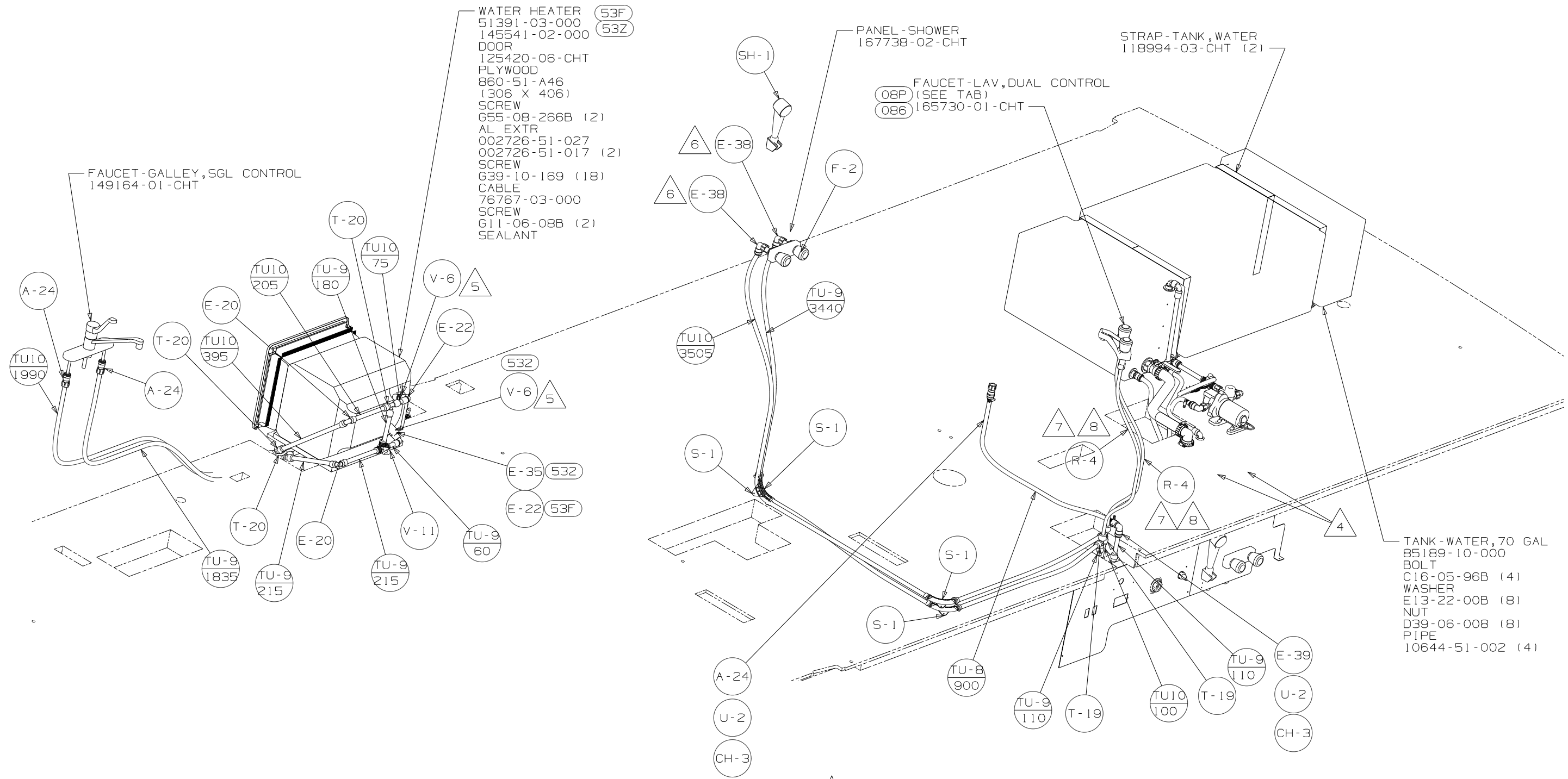
FRONT OF COACH

- (08P) INTERIOR UPGRADE - WITHOUT
- (086) INTERIOR UPGRADE PACKAGE
- (53F) WATER HEATER-ELEC IGNITION
- (64R) EXTERIOR WASH STATION
- (1J4) EXT WASH STATION-WITHOUT
- (53Z) WTR HTR-6GAL/110/LP/MTR/AUTO

- NOTES:
9. ADD TEFLON TAPE 10405-03-000.
  8. LABEL HOT AND COLD SUPPLY TUBES.
  7. TAPE FITTING TO TUBE BEFORE CABINET SET TO PREVENT FITTING FROM MOVING.
  6. ADD TEFLON TAPE 10405-01-000.
  5. ADD TEFLON TAPE 10405-02-000.
  4. ADD PIPE WRAP (LADDER SCRAP) INSULATION HERE.
3. ALL TUBING TO BE SECURED AT 1200 INTERVALS MAXIMUM WITH CLAMP 10495-01-000 AND SCREW G67-10-12B OR EQUIVALENT..
  2. TUBING TO BE INSTALLED WITH SUFFICIENT SLOPE TO PROVIDE DRAINAGE TO NEAREST VALVE.
  1. PLASTIC FITTINGS TO BE SEALED WITH SEALANT 84456-01-000.

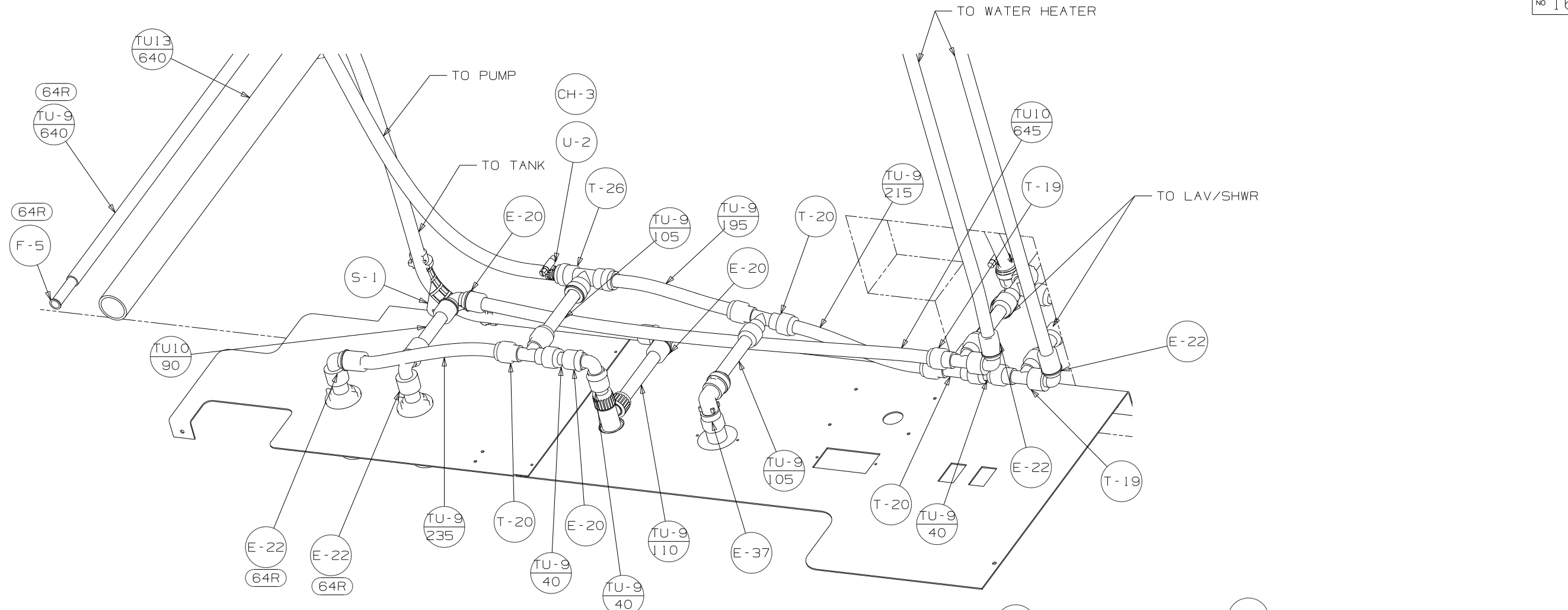
(X-X)  
FOR WATER CALLOUTS SEE DWG NO 116230-01-000

<b>WINNEBAGO</b>		COPYRIGHT 2009 WINNEBAGO INDUSTRIES, INC.	
DFTR	ORIG. DATE	ALL DIMENSIONS ARE IN MILLIMETERS	
CHKR		MATERIAL:	
P.E.		WHOLE DIM (X)	: 3
M.E.		ONE-PLACE (X.X)	:
DSNR		TWO-PLACE (X.XX)	:
		ANGLE	:
		THIRD ANGLE PROJECTION	
DO NOT SCALE DRAWING			
TITLE: WATER SYSTEM INSTL			
SHEET 1 OF 4	PART NO	164815	REV

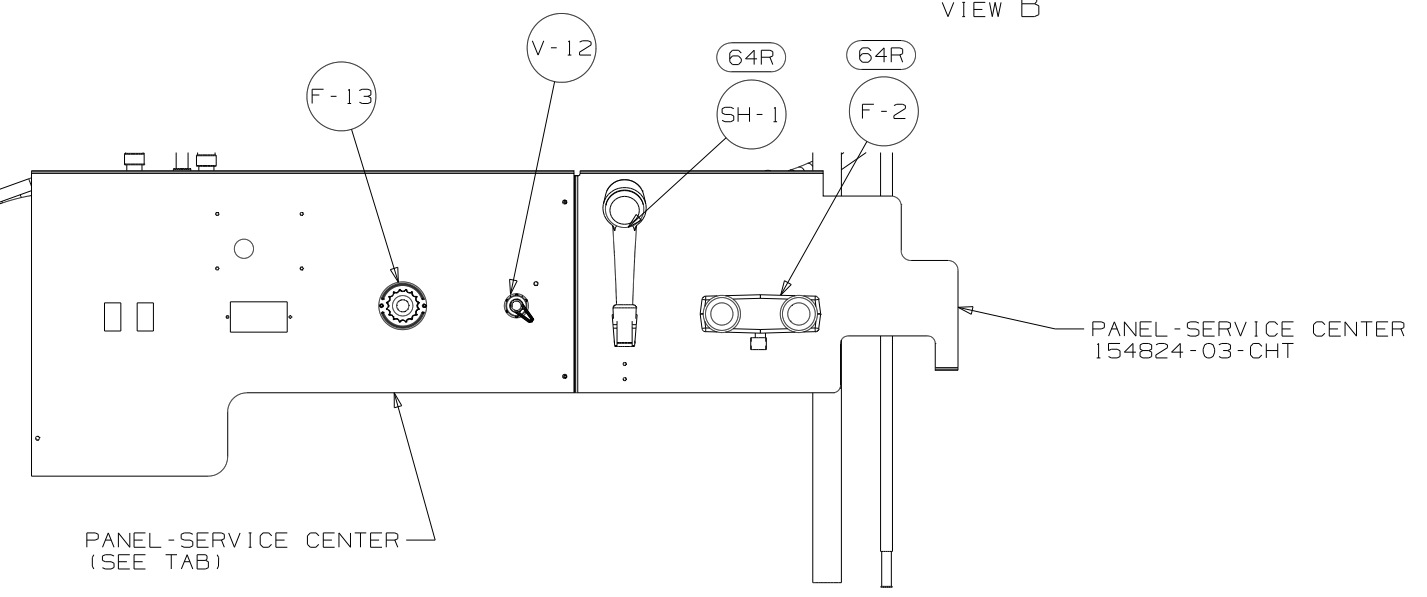


VIEW A

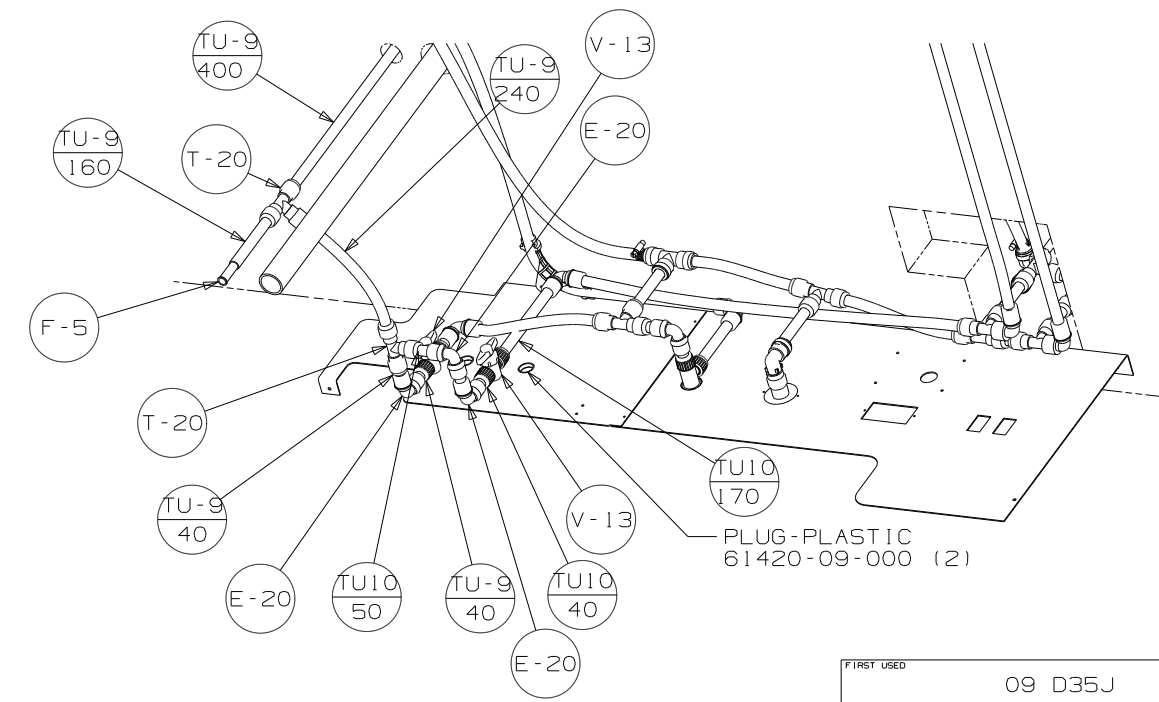
FIRST USED	09 D35J	
TITLE:	DO NOT SCALE DRAWING	
	WATER SYSTEM INSTL	
SHEET 2	PART NO	REV
	164815	



VIEW B

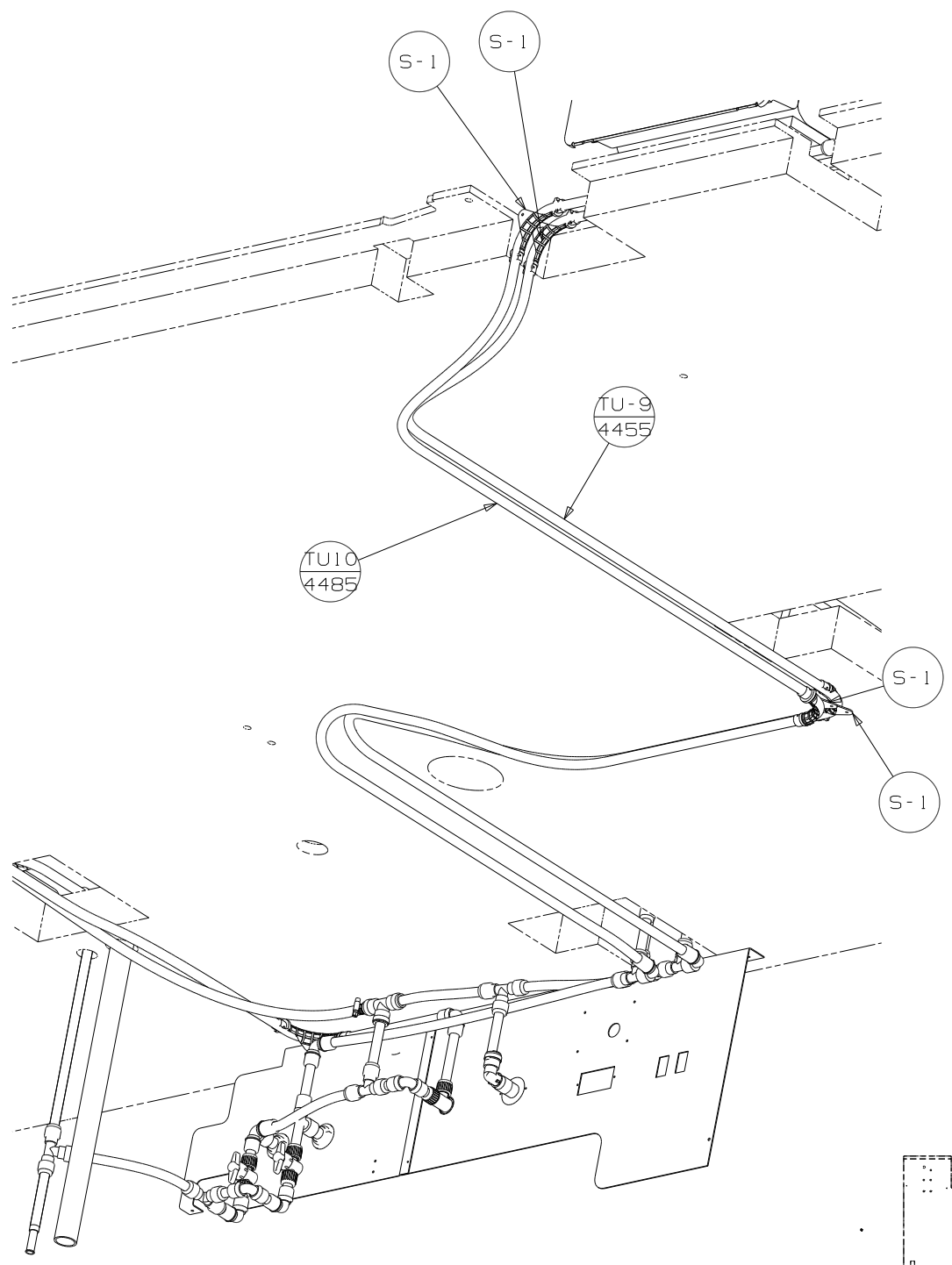


VIEW C



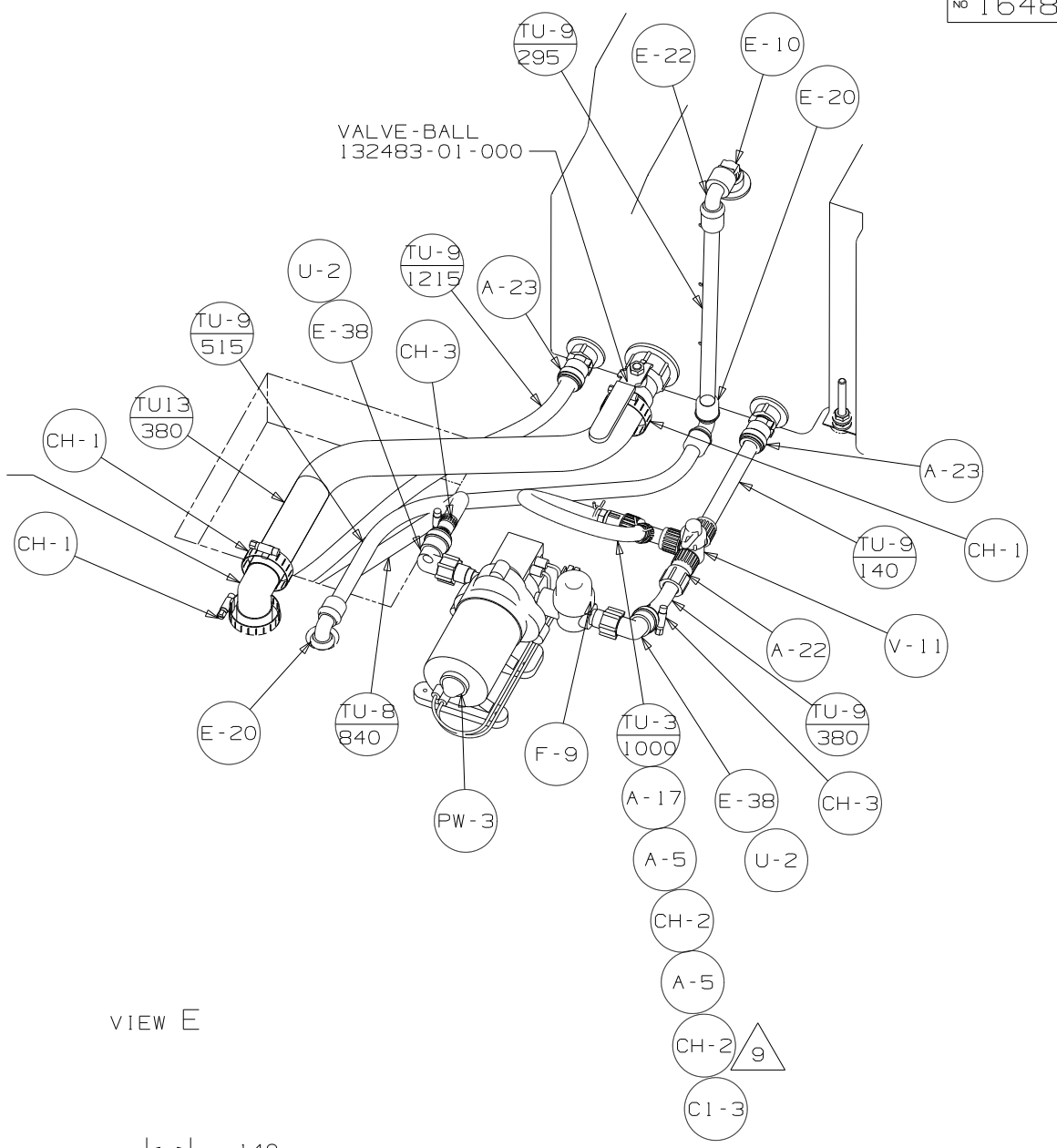
VIEW B  
1J4

FIRST USED	09 D35J
TITLE	DO NOT SCALE DRAWING
SHEET 3	164815
PART NO	164815
REV	

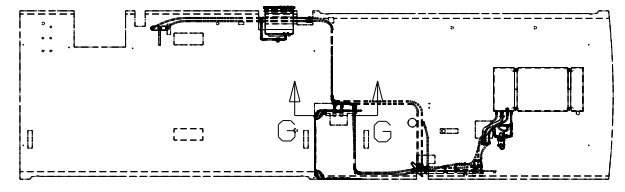


VIEW D

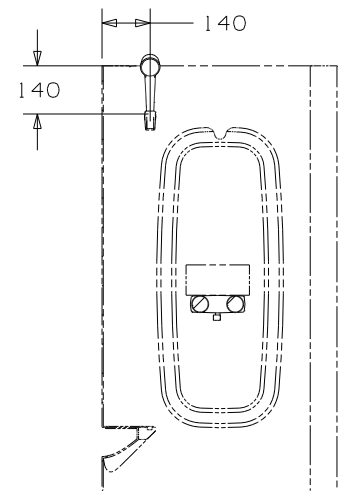
ELBOW  
132781-01-000



VIEW E



VIEW F



SECTION G-G

FIRST USED	09 D35J	
TITLE	DO NOT SCALE DRAWING	
SHEET 4	PART NO	164815
	REV	1 7/28/2009