

7. USE SMOOTH PLUMBERS PUTTY 167459-01-000 TO SEAL STRAINER (.2 PER STRAINER).
6. VENT PIPE MUST PROJECT 51 MIN AND 64 MAX ABOVE ROOF FOR PROPER FIT AND FUNCTION.
5. SEAL AROUND SHOWER WITH SILICONE.
4. SECURE VENT TUBES TO FLOOR WITH BRACKET 95061-01-000 (2). CLAMP 62401-02-000 AND SCREW G67-10-12B (2)
3. ALL PIPE AND FITTINGS TO BE ASSEMBLED WITH SOLVENT 4020-01-000 (US), 4020-02-000 (CAN).
2. SLOPE OF TRAP ARM MUST BE 6 PER 305 mm.
1. SLOPE OF HORIZONTAL PIPING TO BE MIN 3 PER 305 mm.

NOTES:

(265) CODES/STDS-CSA/CMVSS  
 (1B1) CODES/STANDARDS-USA

<b>WINNEBAGO</b>		COPYRIGHT 2008 WINNEBAGO INDUSTRIES, INC.	
D/FR	ORIG. DATE	ALL DIMENSIONS ARE IN MILLIMETERS	
CHKR			
P.E.			
M.E.	FIRST USED		
DSNR	09 D29R		
UNSPECIFIED TOLERANCES ARE:		MATERIAL:	
WHOLE DIM (X)	: 3		
ONE-PLACE (X.X)	:		
TWO-PLACE (X.XX)	:		
ANGLE	:		
THIRD ANGLE PROJECTION			
DO NOT SCALE DRAWING			
TITLE: DRAINAGE SYSTEM INSTL			
SHEET 1 OF 3	PART NO	165206	REV
REF:	1 10/14/2008		

(X-X)  
 FOR  
 DRAINAGE  
 CALLOUTS  
 SEE DWG NO  
 116229-01-000

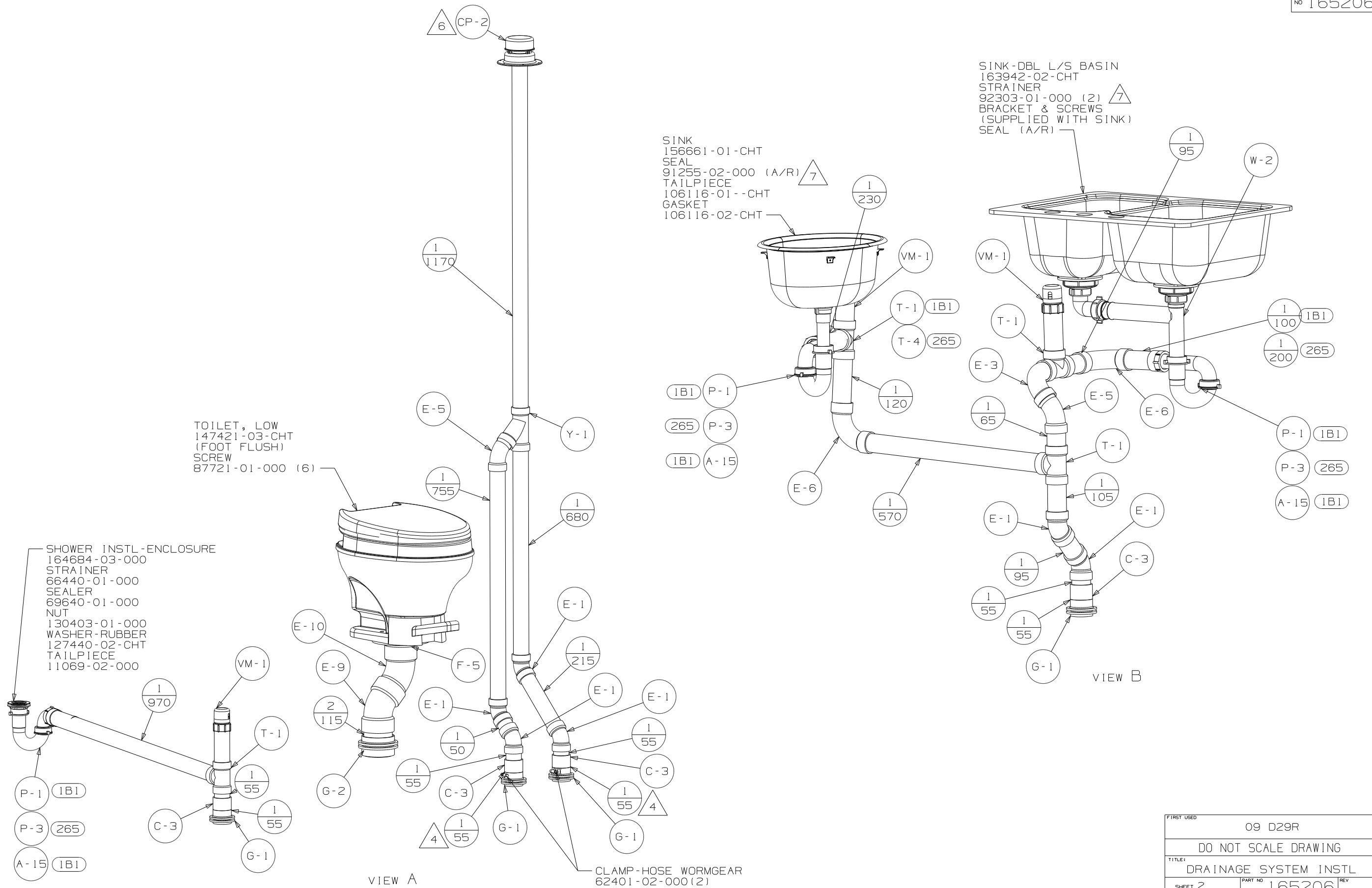
SINK  
 156661-01-CHT  
 SEAL  
 91255-02-000 (A/R)  $\nabla$  7  
 TAILPIECE  
 106116-01--CHT  
 GASKET  
 106116-02-CHT

SINK-DBL L/S BASIN  
 163942-02-CHT  
 STRAINER  
 92303-01-000 (2)  $\nabla$  7  
 BRACKET & SCREWS  
 (SUPPLIED WITH SINK)  
 SEAL (A/R)

TOILET, LOW  
 147421-03-CHT  
 (FOOT FLUSH)  
 SCREW  
 87721-01-000 (6)

SHOWER INSTL-ENCLOSURE  
 164684-03-000  
 STRAINER  
 66440-01-000  
 SEALER  
 69640-01-000  
 NUT  
 130403-01-000  
 WASHER-RUBBER  
 127440-02-CHT  
 TAILPIECE  
 11069-02-000

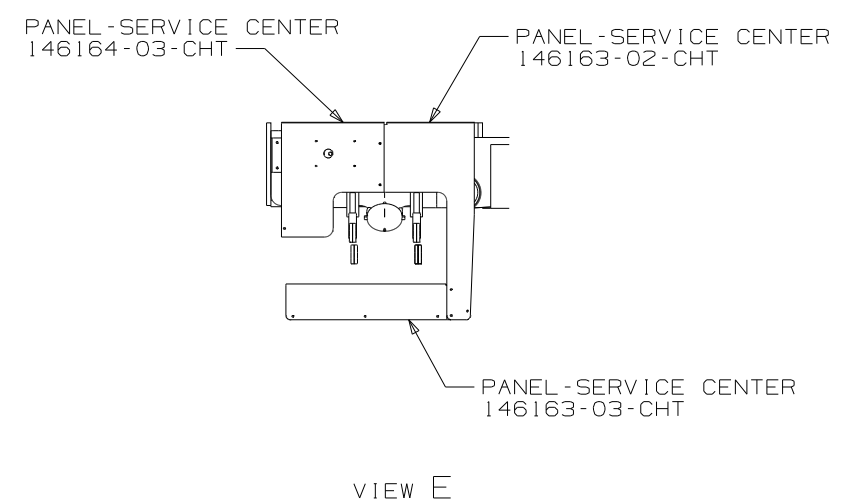
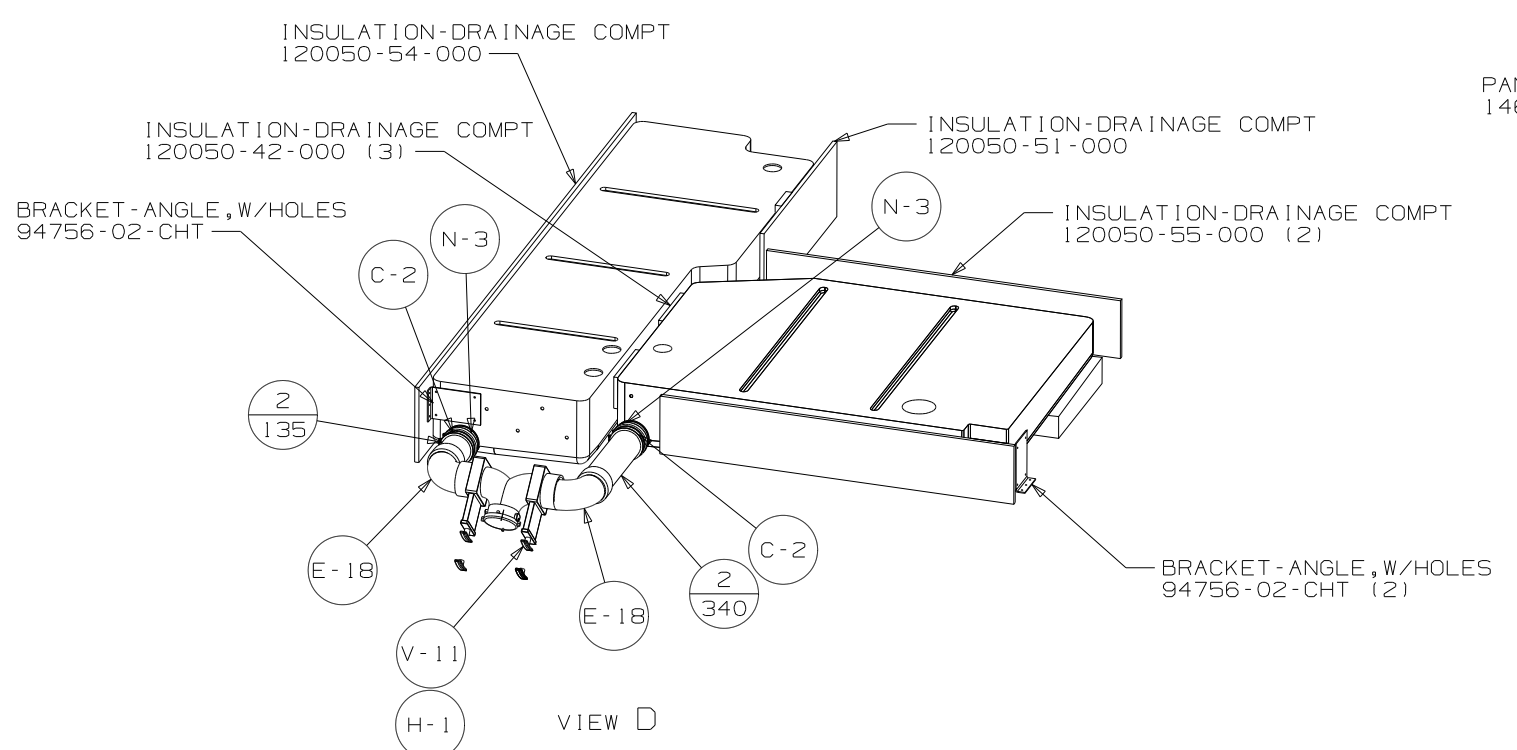
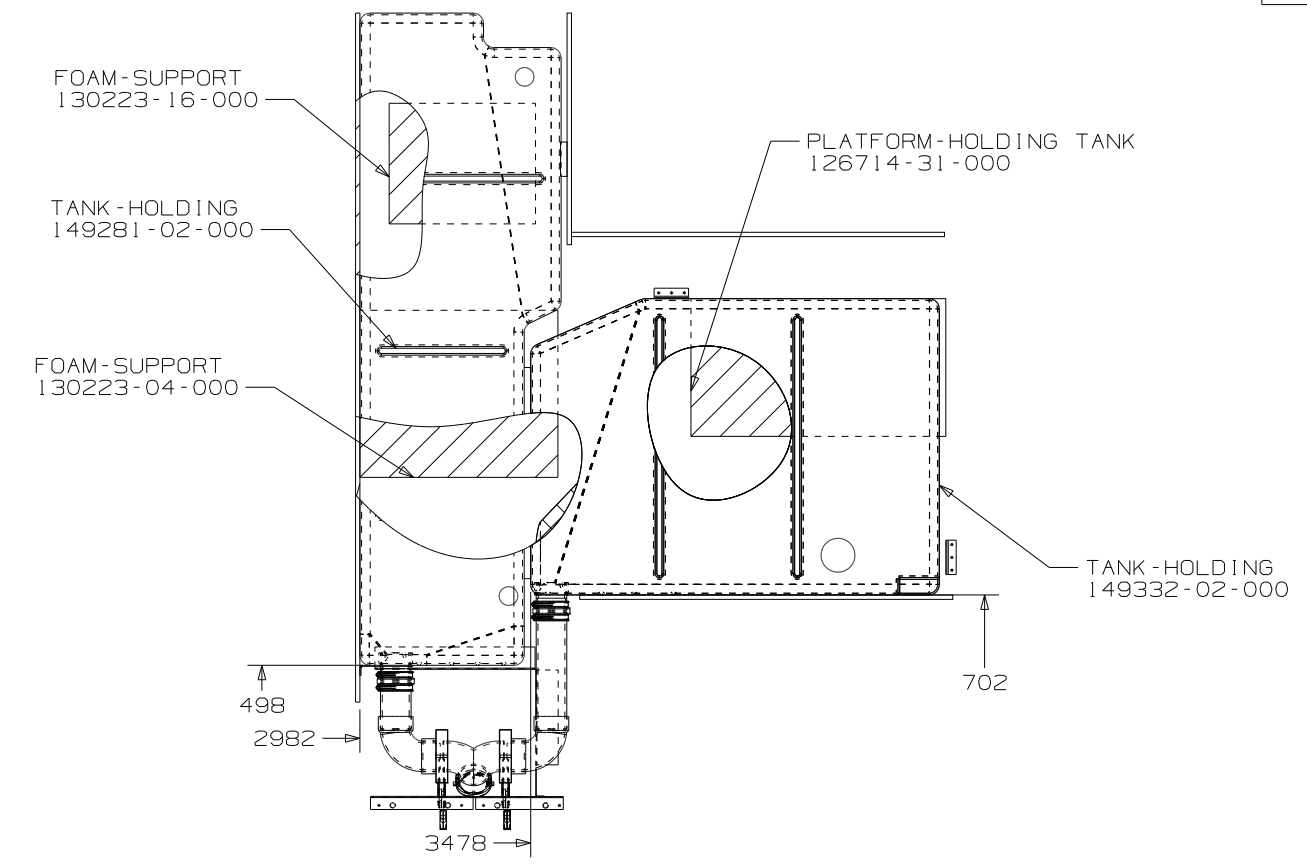
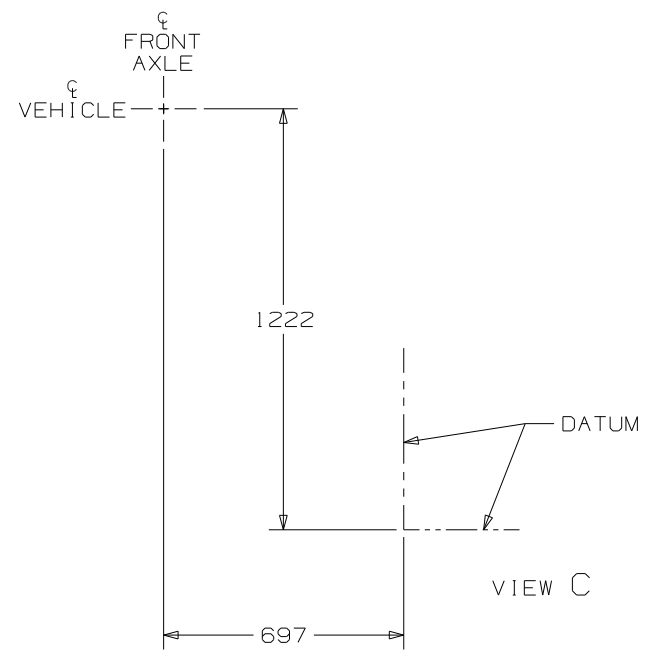
CLAMP-HOSE WORMGEAR  
 62401-02-000 (2)



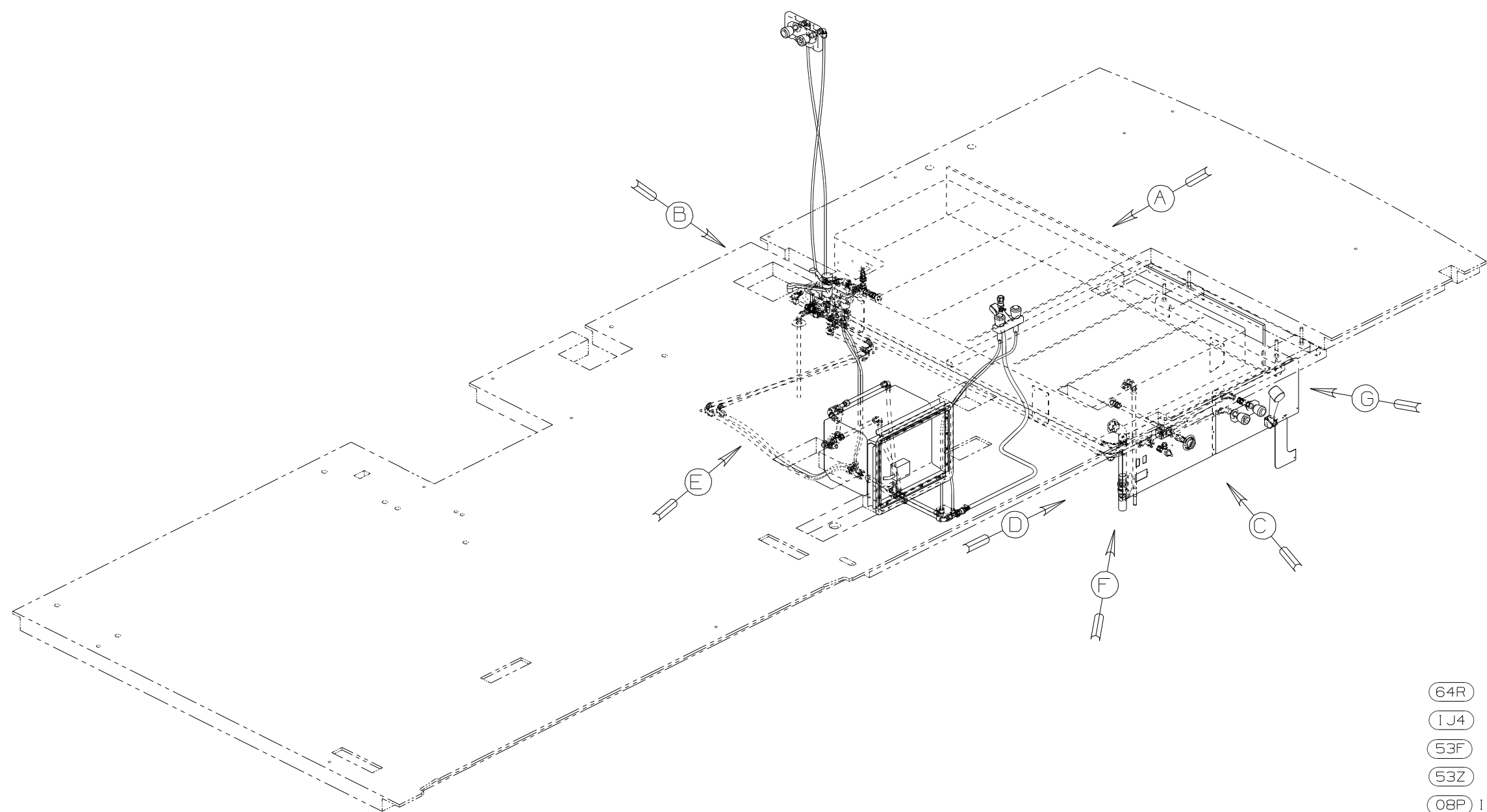
VIEW A

VIEW B

FIRST USED	09 D29R		
TITLE	DO NOT SCALE DRAWING		
	DRAINAGE SYSTEM INSTL		
SHEET 2	PART NO	165206	REV



FIRST USED	09 D29R		
TITLE	DO NOT SCALE DRAWING		
	DRAINAGE SYSTEM INSTL		
SHEET 3	PART NO	165206	REV
			10/14/2008



- (64R) EXTERIOR WASH STATION
- (1J4) EXT WASH STATION-WITHOUT
- (53F) WATER HEATER-ELEC IGNITION
- (53Z) WTR HTR-6 GAL/110/LP/MTR/AUTO
- (08P) INTERIOR UPGRADE - WITHOUT
- (086) INTERIOR UPGRADE PACKAGE

- △ 9 ADD PIPE WRAP (LADDER SCRAP) INSULATION HERE.
  - △ 8 LABEL HOT AND COLD SUPPLY TUBES.
  - △ 7 TAPE FITTING TO TUBE BEFORE CABINET SET TO PREVENT FITTING FROM MOVING.
  - △ 6 ADD TEFLON TAPE 10405-01-000.
  - △ 5 ADD TEFLON TAPE 10405-02-000.
  - △ 4 FLUSHING SYSTEM REQUIRES 125697-06-000 INSTRUCTION SHEET.
3. ALL TUBING TO BE SECURED AT 1200 INTERVALS MAXIMUM WITH CLAMP 10495-01-000 AND SCREW G67-10-12B OR EQUIVALENT.
  2. TUBING TO BE INSTALLED WITH SUFFICIENT SLOPE TO PROVIDE DRAINAGE TO NEAREST VALVE.
  1. PLASTIC FITTINGS TO BE SEALED WITH SEALANT 84456-01-000.

NOTES:

(X-X)  
FOR  
WATER  
CALLOUTS  
SEE DWG NO  
116230-01-000

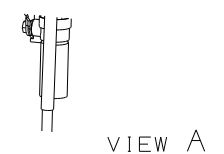
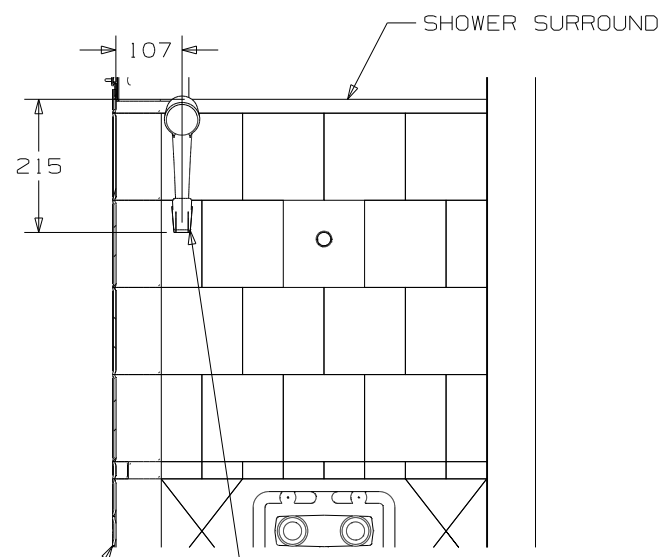
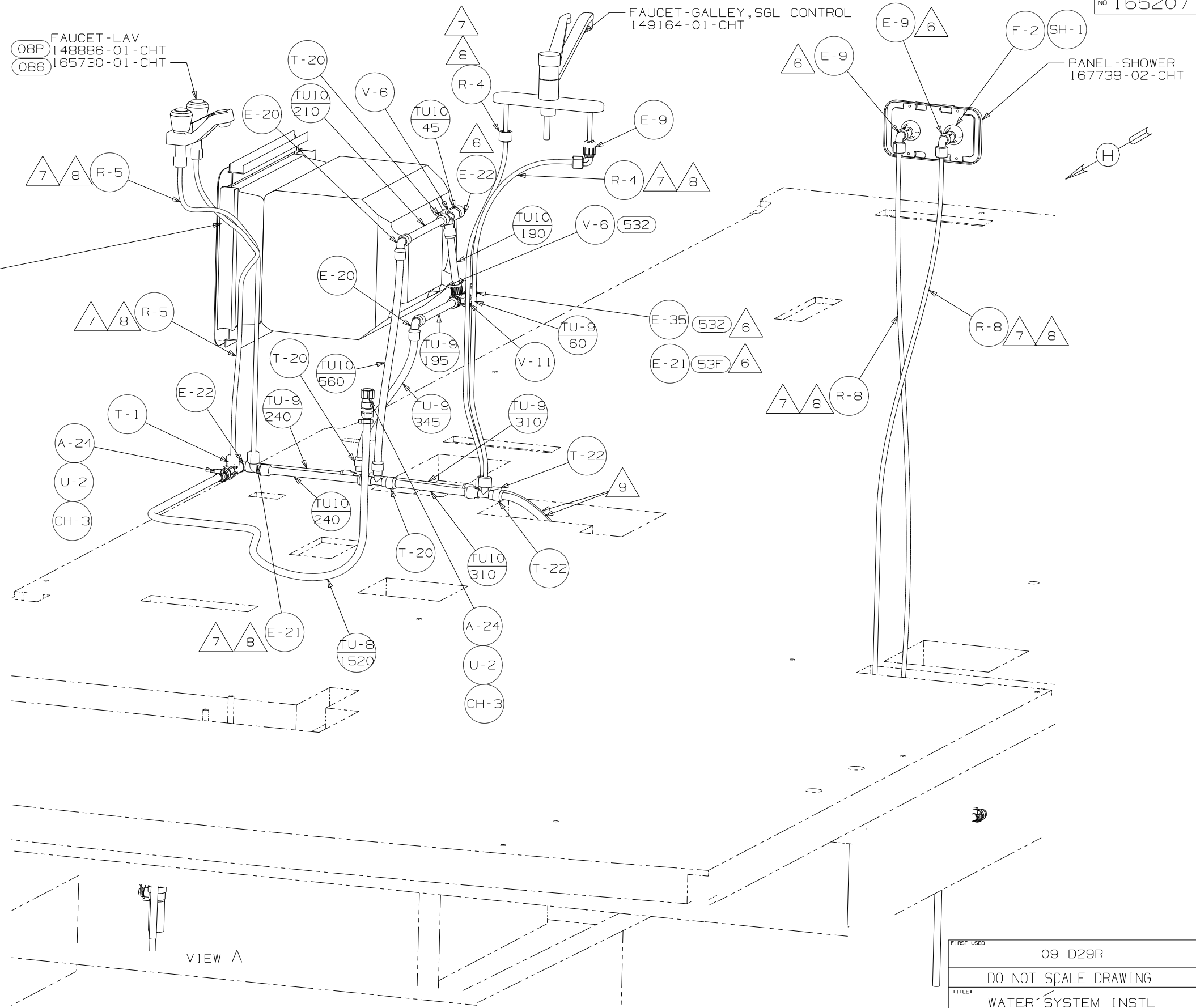
<b>WINNEBAGO</b>		COPYRIGHT 2009 WINNEBAGO INDUSTRIES, INC.	
DFTR	ORIG. DATE	ALL DIMENSIONS ARE IN MILLIMETERS	
CHKR		FIRST USED	
P.E.		09 D29R	
M.E.		UNSPECIFIED TOLERANCES ARE:	
DSNR		MATERIAL:	
		WHOLE DIM (X)	: 3
		ONE-PLACE (X.X)	: 1.5
		TWO-PLACE (X.XX)	: 0.50
		ANGLE	: 1°
THIRD ANGLE PROJECTION		DO NOT SCALE DRAWING	
TITLE: WATER SYSTEM INSTL			
SHEET 1 OF 4	PART NO	165207	REV
REF:	1 2/13/2009		

- (53F) WATER HEATER 51391-03-000
- (53Z) CABLE 145541-02-000
- DOOR 125420-06-CHT
- CABLE 76767-03-000
- SCREW G11-06-08B (2)
- AL EXTR 151293-51-004 (2)
- 151293-51-005 (2)
- SCREW G39-10-169 (18)
- SEALANT
- FLANGE 152239-01-CHT

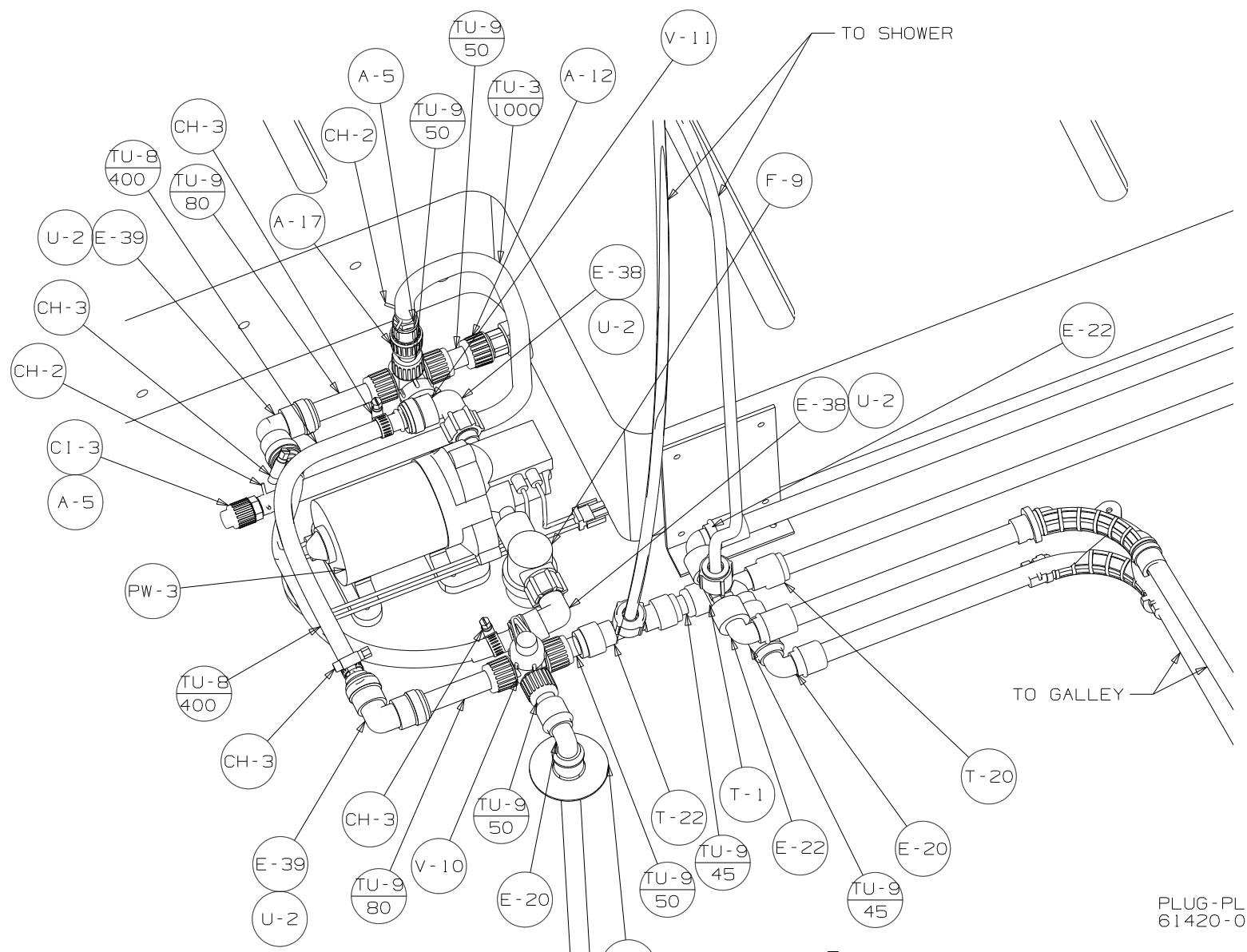
- (08P) FAUCET-LAV 148886-01-CHT
- (086) 165730-01-CHT

FAUCET-GALLEY, SGL CONTROL 149164-01-CHT

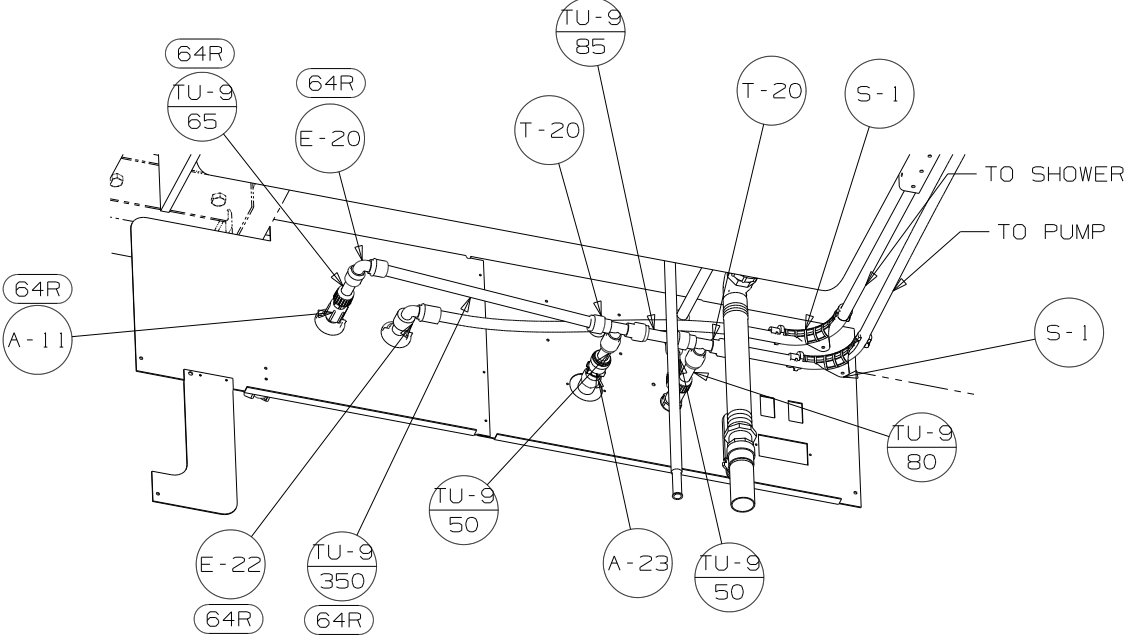
PANEL-SHOWER 167738-02-CHT



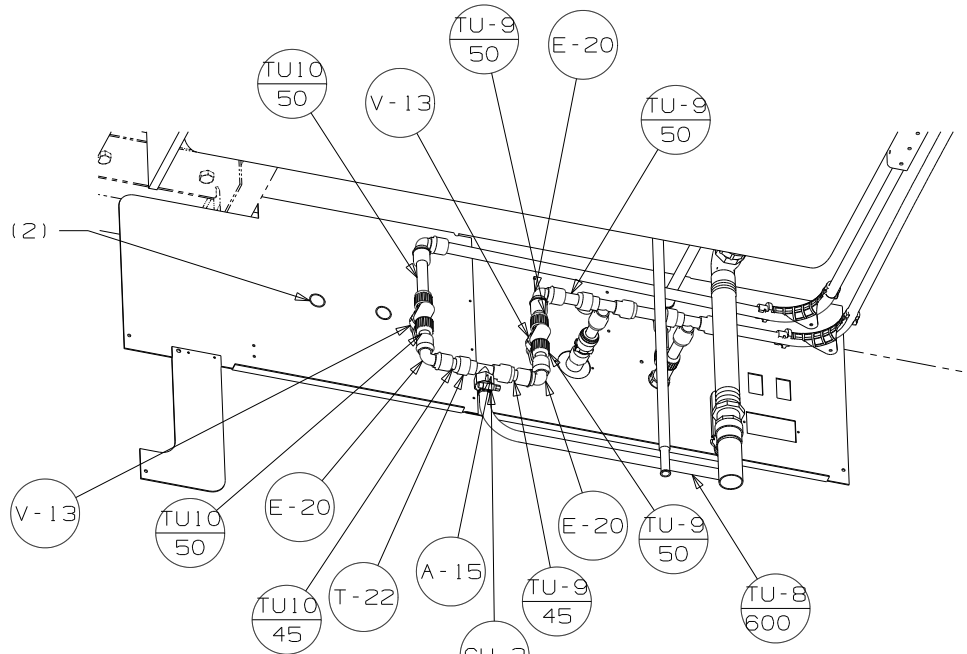
FIRST USED	09 D29R
TITLE	DO NOT SCALE DRAWING
TITLE	WATER SYSTEM INSTL
SHEET 2	PART NO 165207 REV



VIEW B  
FLOOR NOT SHOWN



VIEW D



VIEW D

1J4

PANEL-SERVICE  
150123-02-CHT

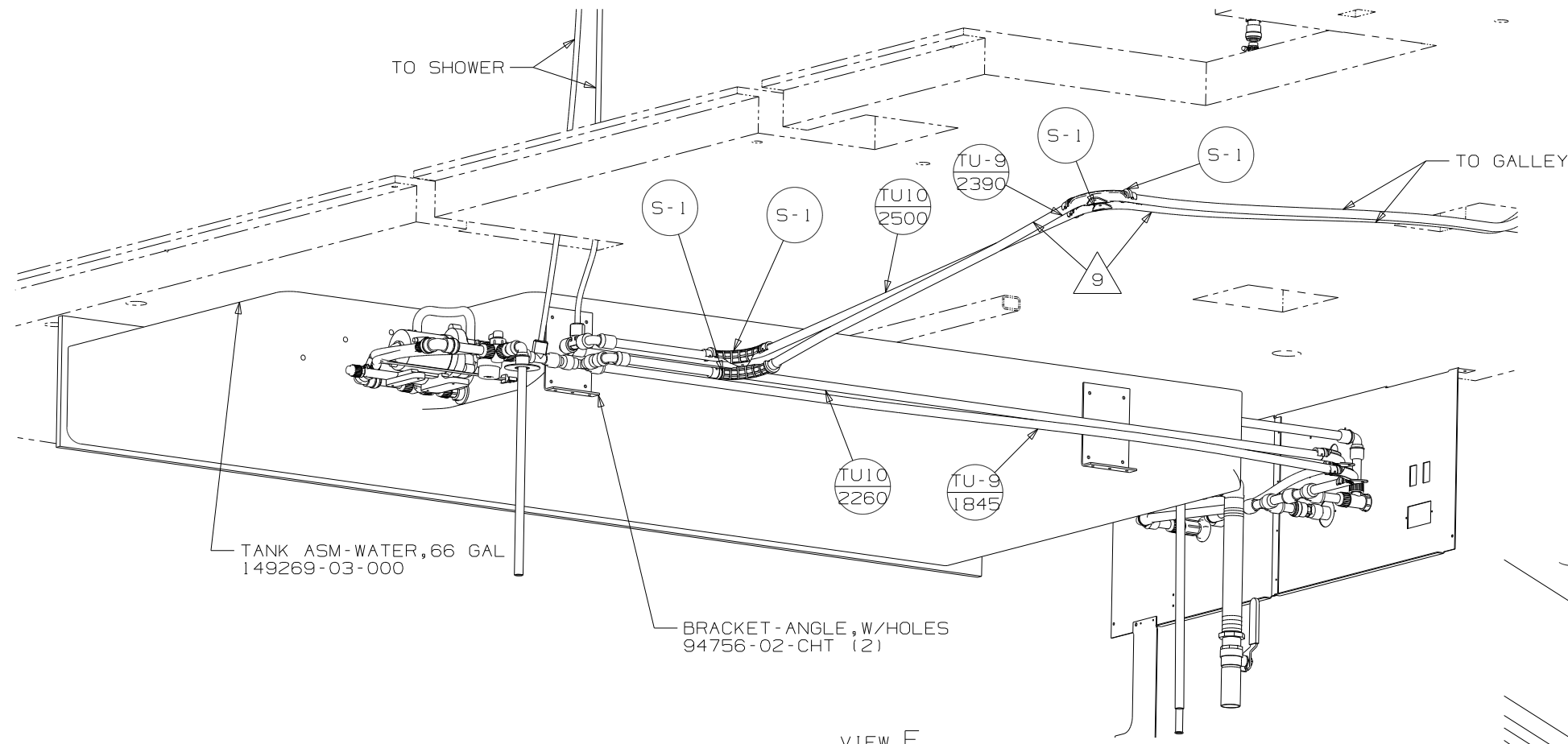
PANEL-SERVICE  
150122-01-CHT

VIEW C

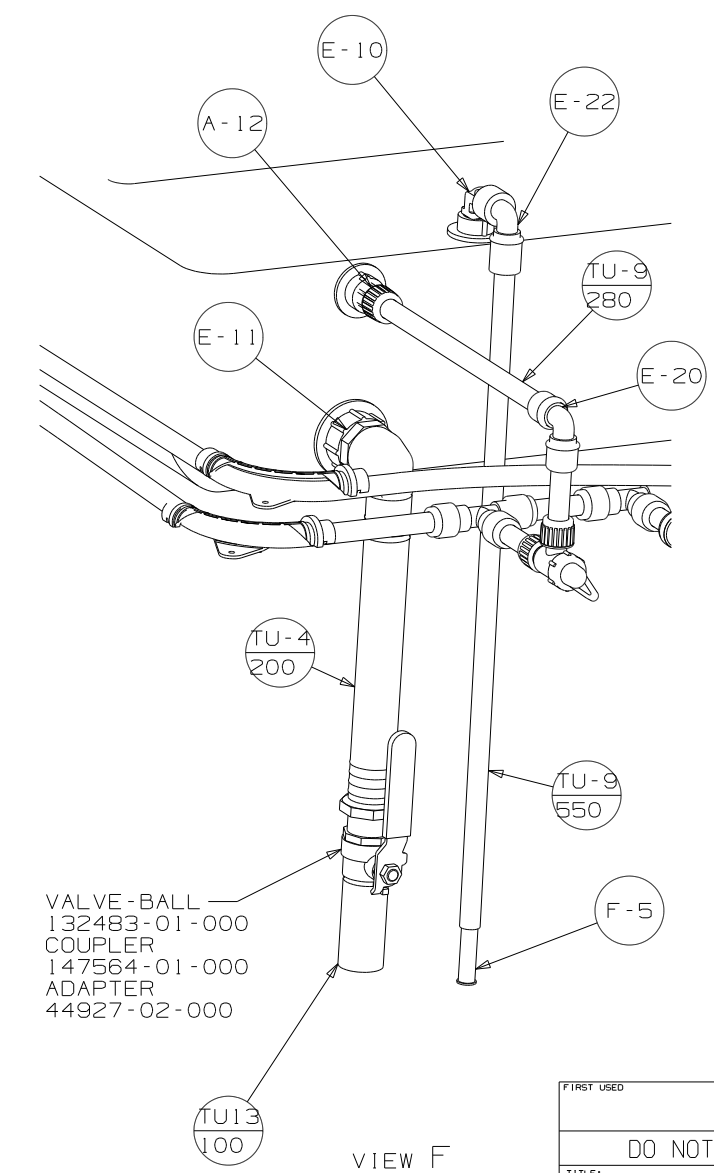
PANEL-SERVICE CENTER  
159583-02-CHT  
SCREW  
G3908-08-170 (2)  
SCREW  
G6710-12-170

PLUG-PLASTIC  
61420-09-000 (2)

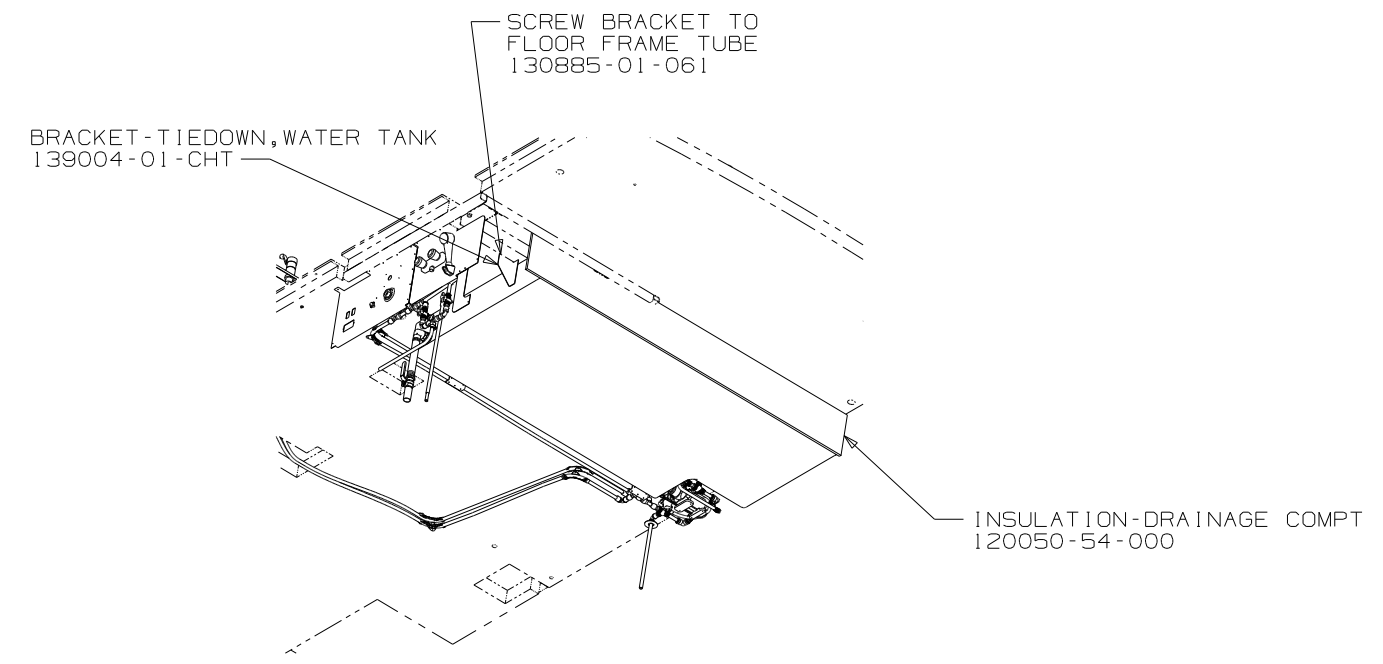
FIRST USED	09 D29R
TITLE	DO NOT SCALE DRAWING
WATER SYSTEM INSTL	
SHEET 3	PART NO 165207 REV



VIEW E



VIEW F



VIEW G

FIRST USED	09 D29R	
TITLE	DO NOT SCALE DRAWING	
	WATER SYSTEM INSTL	
SHEET 4	PART NO	165207
	REV	