



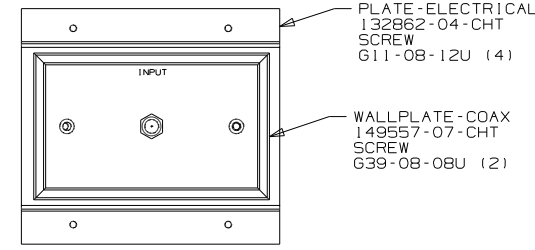
**DANGER**

**Danger of electrical shock, burns or death.** Always remove all power sources before attempting any repair, service or diagnostic work. Power can be present from shore power, generator, inverter or battery. All power sources must be disabled and secured before performing any service.



**CAUTION**

If you lack the skills, tools or equipment to perform diagnostic or repair work leave such work to an authorized Winnebago Industries dealer or other qualified shop.



DETAIL AA

- 8 ILK TV-19" STEREO FLAT PANEL LCD 170909-01-000
- TV-19" DC POWER CABLE W/HOUSING 170909-02-000
- WASHER E11-10-00B (4)
- CONVOLUTE 41953-06-000 (600MM)
- WIRE TIE 8343-01-000 (2)
- SUPPORT ASM-TV 169316-07-XXX
- SCREW G39-10-12U (4)
- PLATE-MOUNT,TV 167483-04-CHT
- SCREW G39-10-12U (2)
- WIRE ASM-POWER CABLE, TV 170909-03-000
- WIRE ASM-POWER COAX EXT 168887-01-000
- DETAIL AB

- 7 WIRE ASM-TV EXTENSION 165275-02-000
- 6 CABLE ASM-COAX ADAPTOR 87105-01-009
- 82134-01-000

- 3 571 SPEAKER-RADIO 110465-01-000 (2)
- SCREW 49465-03-000 (8)

WIRE ASM-OVHD, DINETTE  
159318-01-000

TO WIRE ASM-SIDEWALL

RECEPTACLE-12V  
132958-01-000  
SCREW  
G11-08-12B (2)

ILK WIRE ASM-TV EXTENSION 165275-02-000

6 CABLE ASM-COAX ADAPTOR 87105-01-009

6 WALLPLATE-TV, BDRM 76319-09-000

LIGHT-WARDROBE 87694-01-000
- SCREW G11-10-12U (2)
- CONNECTOR 58028-01-000 (2)
- WASHER-PLASTIC 87080-02-CHT

SWITCH 56264-01-000 (2)
- SCREW G11-06-16U (4)
- WASHER-PLASTIC 87080-02-CHT (2)

LAMP 93575-52-CHT
- BULB 67479-01-000 (2)
- CONNECTOR 58028-01-000 (2)
- SCREW G11-08-16U (2)

THERMOSTAT 135618-03-CHT
- HEAT PUMP 135618-01-CHT (29J)

SWITCH-DINETTE  
DETAIL CH

SWITCH  
DETAIL CL (ILK)

WIRE ASM-CHASSIS

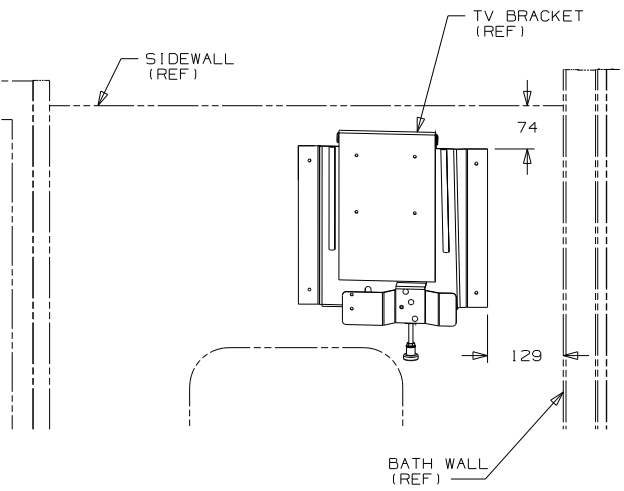
SWITCHES  
DETAIL CA

WIRE ASM-TANK  
MAIN HOLDING 151317-02-000

WIRE ASM-HEATER, TANK FROM RIGHT SIDE (23T) (23R) (4) (2)

SWITCH-WATER PUMP 108357-15-000
- ACTUATOR 108356-04-CHT (CONNECTS TO WIRE ASM-CHASSIS)

INLET COAX (RED)  
DETAIL AA



DETAIL AB

- 8 USE SCREWS SUPPLIED WITH TV.
- 7 WIRE ASSEMBLIES TO BE SUPPLIED LOOSE IN COACH.
- 6 NOT USED WITH (ILK)
- 5 WITHOUT (64R) INSTALL SWITCH ON WIRE ASM, ROUTE & SECURE PUMP SWITCH BRANCH BACK ALONG FRAME RAIL, THRU UPPER FLOOR ASM AT WIRE ASM-CHASSIS AND WIRE ASM-RIGHT CONNECTION POINT.
- 4 WIRE ROUTED ALONG DRAINAGE PIPE.
- 3 USE ONE OF THE 4 SPEAKER ASM'S PROVIDED IN KIT. SEND SCREW IN THE KIT TO THE SURPLUS STORE TO BE SOLD. SEND THE WIRE ASM W/HSG TO WIRE PREP TO BE INCORPORATED INTO THE NECESSARY WIRE LOOM.
- 2 SEE DRAINAGE SYSTEM INSTL FOR HEATER PAD PART NUMBERS AND LOCATIONS.

NOTES:

- ROUTE TANK SENSOR WIRES SO THEY DO NOT PASSOVER SENSORS. USE WIRE TIE MOUNT 155366-01-000 AND WIRE TIE 8343-01-000 AS NEEDED. TANK SURFACE MUST BE CLEANED USING ISOPROPYL ALCOHOL AND PRIME WITH PRIMER 94

FOR ELECTRICAL TORQUE SPECIFICATIONS SEE DWG NO. 128783-01-000

(X-X) FOR ELECTRICAL CALLOUTS SEE DWG NO. 121339-01-000

- (ILK) TV-19"DC,COLOR,LCD W/REMOTE
- (086) INTERIOR UPGRADE PACKAGE
- (64R) EXTERIOR WASH STATION
- (571) RADIO SPEAKERS
- (29J) AC HEAT PUMP-1
- (23R) DRAINAGE SYSTEM/HEAT-PREP
- (23T) DRAINAGE SYSTEM-HEATED
- (ITA) ITASCA ONLY
- (WIN) WINNEBAGO ONLY
- (265) CODES/STANDARDS-CSA/CMVSS
- (1B1) CODES/STANDARDS USA

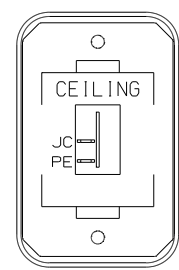


DFTR	ORIG. DATE
CHKR	ALL DIMENSIONS ARE IN MILLIMETERS
P.E.	
M.E.	FIRST USED
DSNR	09 331C
UNSPECIFIED TOLERANCES ARE:	
WHOLE DIM (X)	: 3
ONE-PLACE (X.X)	: 1.5
TWO-PLACE (X.XX)	: 0.50
ANGLE	: 1°
THIRD ANGLE PROJECTION	

DO NOT SCALE DRAWING

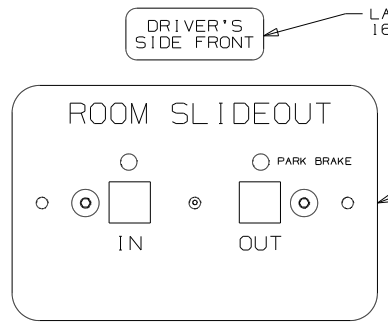
TITLE:	WIRING INSTL-BODY, 12V
SHEET 1 OF 6	PART NO 165466
REF:	1 4/16/2009





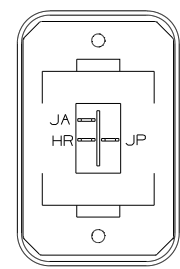
SWITCH-ROCKER  
135740-01-CHT  
SWITCH-BASE  
135741-01-CHT  
SWITCH-BEZEL  
135742-07-CHT  
SCREW  
G11-08-08U (2)

DETAIL CA



DRIVER'S SIDE FRONT  
LABEL-SLIDEOUT, DRIVER, FRONT  
163992-01-CHT

SWITCH, SLIDEOUT  
138173-04-000  
SCREW  
76790-05-000 (2)  
(CONNECT TO 6-PIN  
HOUSING WITH CIRCUITS  
DS, DU, GGD, GGE, DR, GGF.)

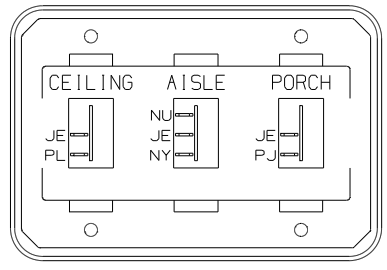


SWITCH-ROCKER  
135740-06-CHT  
SWITCH-BASE  
135741-01-CHT  
SWITCH-BEZEL  
135742-01-CHT  
SCREW  
G11-08-08U (2)  
LABEL-SWITCH  
134563-01-CHT

**WARNING** CRUSH HAZARD. Keep people and objects clear of the inside and the outside of the slideout room when operating. Failure to comply could result in death or serious injury.

LABEL-WARNING, SLIDEOUT  
116549-01-000

HOLDING TANK HEATER  
TURN OFF When Not In Use  
SEE OPERATORS MANUAL



SWITCH-ROCKER  
135740-01-CHT (2)  
135740-02-CHT  
SWITCH-BASE  
135741-03-CHT  
SWITCH-BEZEL  
135742-26-CHT  
SCREW  
G11-08-08U (4)

DETAIL CB

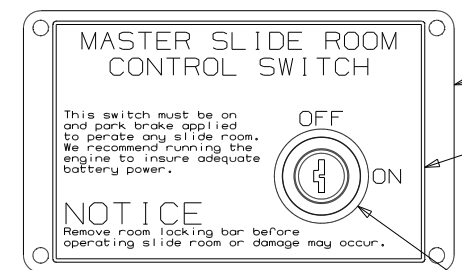


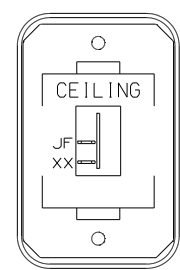
PLATE-KEY, SLIDE ROOM  
163987-01-CHT  
SCREW  
76790-05-000 (4)

LABEL-SLIDROOM CONTROL, MAN  
163988-01-CHT

**NOTICE**  
Remove room locking bar before operating slide room or damage may occur.

DETAIL CD

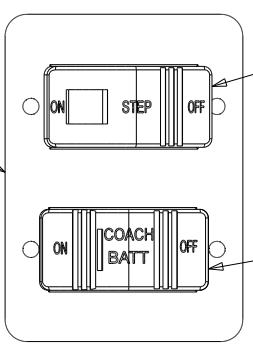
DETAIL CG (23T) OR (23R)



SWITCH-ROCKER  
135740-01-CHT  
SWITCH-BASE  
135741-01-CHT  
SWITCH-BEZEL  
135742-07-CHT  
SCREW  
G11-08-08U (2)

DETAIL CH

PLATE-SWITCH  
98351-22-CHT  
SCREW  
G11-06-10U (4)

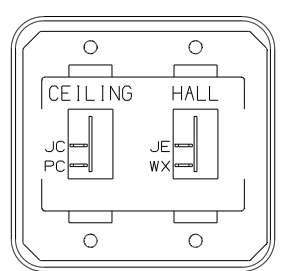


SWITCH-STEP  
108357-19-000  
(CIRCUITS ER, ES)  
SWITCH-BLANK  
96241-03-000

IE2

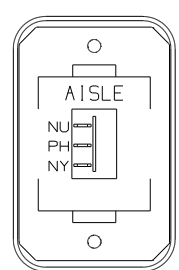
SWITCH-BATT DISC  
108357-17-000  
ACTUATOR-BATT DISC  
108356-19-CHT  
(CIRCUITS KF, LG,  
LJ, LJ, KF, KF, LK)

DETAIL CC



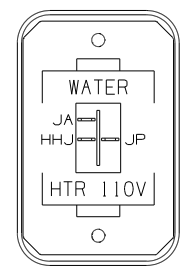
SWITCH-ROCKER  
135740-01-CHT (2)  
SWITCH-BASE  
135741-02-CHT  
SWITCH-BEZEL  
135742-16-CHT  
SCREW  
G11-08-08U (4)

DETAIL CE



SWITCH-ROCKER  
135740-02-CHT  
SWITCH-BASE  
135741-01-CHT  
SWITCH-BEZEL  
135742-06-CHT  
SCREW  
G11-08-08U (2)

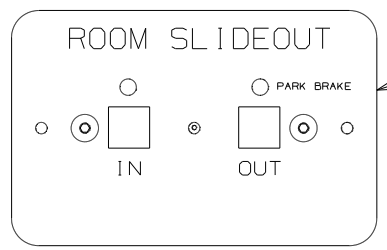
DETAIL CF



SWITCH-ROCKER  
135740-06-CHT  
SWITCH-BASE  
135741-01-CHT  
SWITCH-BEZEL  
135742-35-CHT  
SCREW  
G11-08-08U (2)

DETAIL CK (53Z)

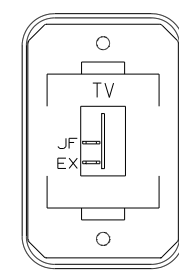
PASSENGER'S SIDE REAR  
LABEL-SLIDEOUT, PASS, REAR  
163992-03-CHT



SWITCH-SLIDEOUT  
138173-04-000  
SCREW  
76790-05-000 (2)  
(CONNECT TO 6-PIN  
HOUSING WITH CIRCUITS  
LLY, LLZ, MMA, MMB, MMC, MMD)

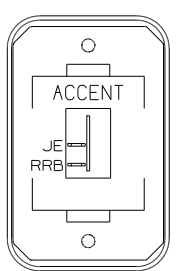
**WARNING** CRUSH HAZARD. Keep people and objects clear of the inside and the outside of the slideout room when operating. Failure to comply could result in death or serious injury.

LABEL-WARNING, SLIDEOUT  
116549-01-000



SWITCH-ROCKER  
135740-01-CHT  
SWITCH-BASE  
135741-01-CHT  
SWITCH-BEZEL  
135742-45-CHT  
SCREW  
G11-08-08U (2)

DETAIL CL



SWITCH-ROCKER  
135740-01-CHT  
SWITCH-BASE  
135741-01-CHT  
SWITCH-BEZEL  
135742-50-CHT  
SCREW  
G11-08-08U (2)

DETAIL CM (086)

- (23R) DRAINAGE SYSTEM/HEAT-PREWIRE
- (53Z) WTR HTR-6GAL/110/LP/MTR/AUTO
- (23T) DRAINAGE SYSTEM-HEATED
- (IE2) ENTRANCE STEP-ELEC.
- (086) INTERIOR UPGRADE PACKAGE
- (265) CODES/STANDARDS-CSA/CMVSS
- (1B1) CODES/STANDARDS USA

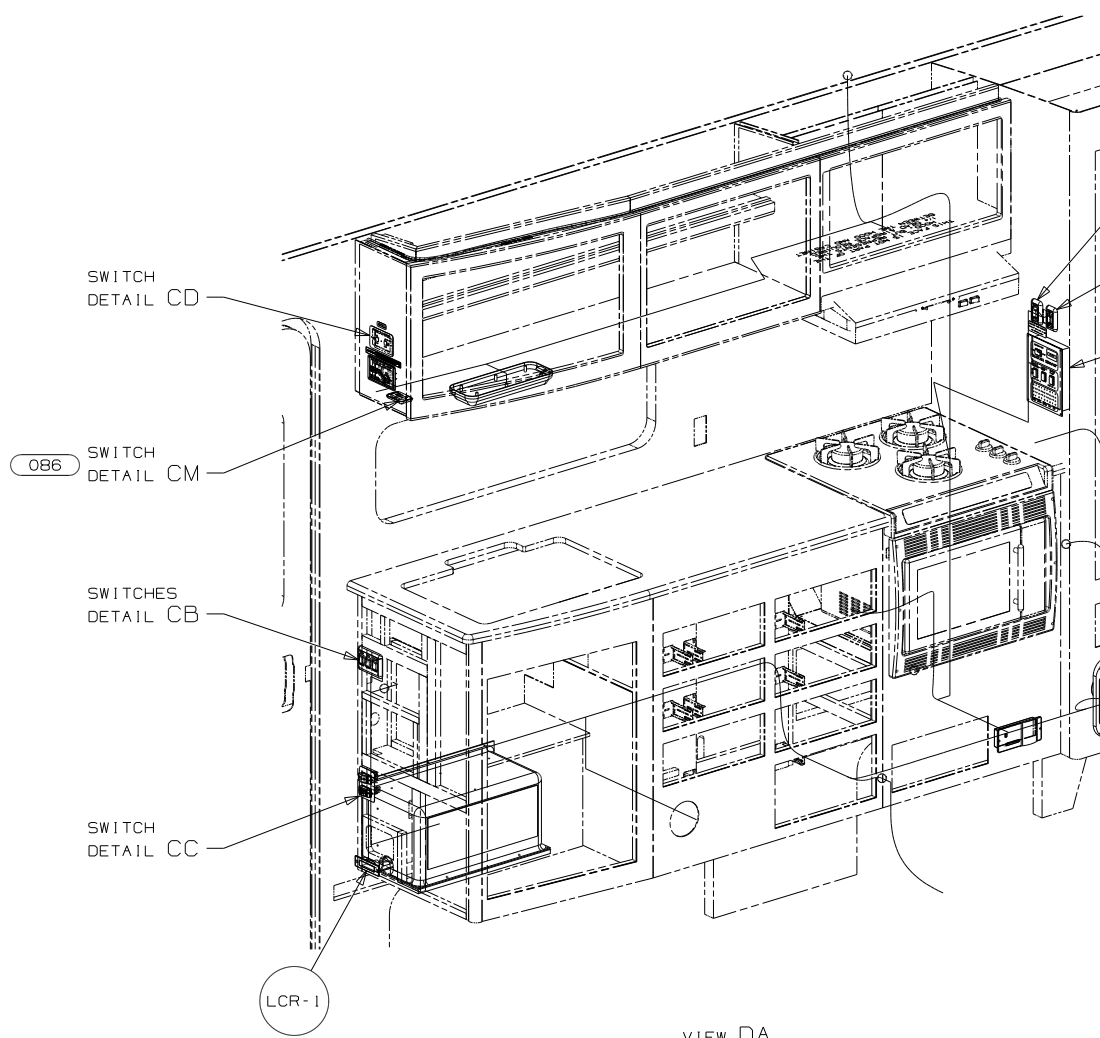
(1B1) (265)

FIRST USED	09 331C
TITLE	DO NOT SCALE DRAWING
WIRING INSTL-BODY, 12V	
SHEET 3	PART NO 165466
	REV

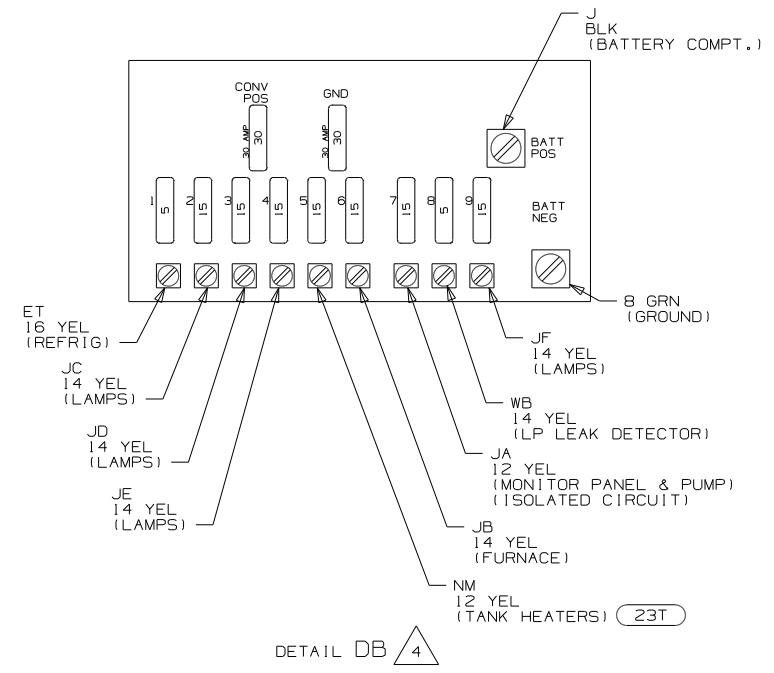
FOR ELECTRICAL TORQUE SPECIFICATIONS SEE DWG NO. 128783-01-000

(X-X) FOR ELECTRICAL CALLOUTS SEE DWG NO. 121339-01-000

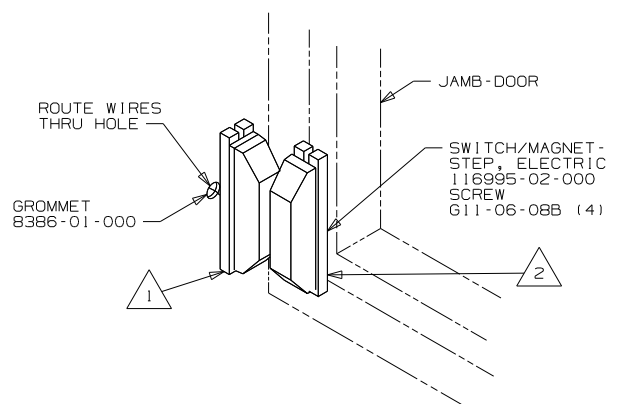
NOTES:  
1 NOT USED WITH (IE2)



VIEW DA



DETAIL DB 4



DETAIL DC

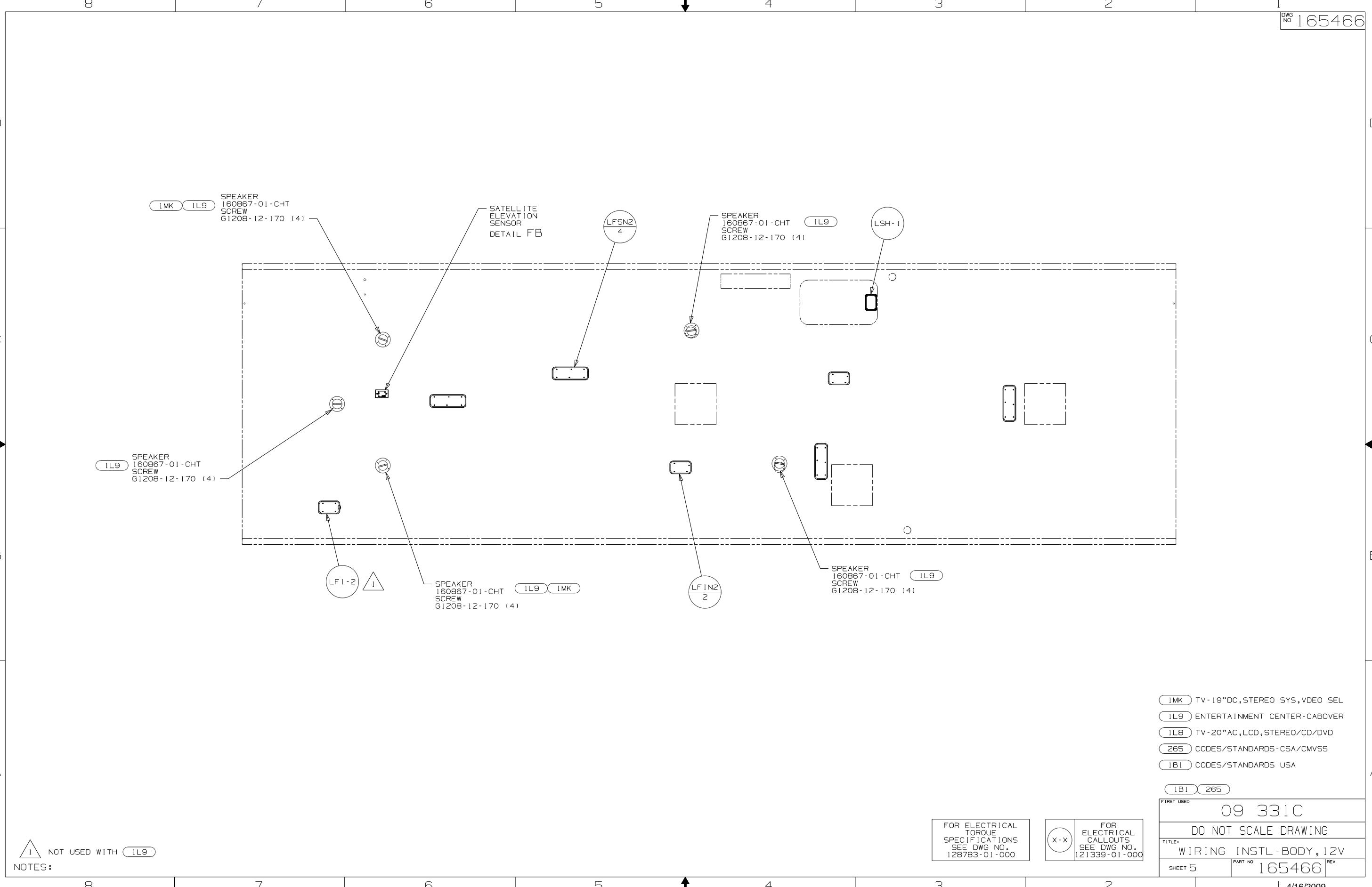
- (53Z) WTR HTR-6GAL/110/LP/MTR/AUTO
- (23R) DRAINAGE SYSTEM/HEAT-PREWIRE
- (23T) DRAINAGE SYSTEM-HEATED
- (086) INTERIOR UPGRADE PACKAGE
- (50H) RADIOS TWO-WAY (4)
- (40N) GEN-4.0KW-ONANGAS-MICROQUIET
- (23T) DRAINAGE SYSTEM-HEATED
- (1E2) ENTRANCE STEP-ELEC.
- (1A3) GENERATOR WITHOUT
- (265) CODES/STANDARDS-CSA/CMVSS
- (1B1) CODES/STANDARDS USA

- NOTES:
- 4 FOR REFERENCE ONLY. SEE LOAD CENTER/ATS ASM FOR ADDITIONAL INFORMATION.
  - 3 SEE WIRING INSTL-BODY,110V FOR ADDITIONAL INFORMATION.
  - 2 MOUNT MAGNET USING PILOT HOLES IN SCREEN DOOR FRAME MOUNT WITH MAGNET TOWARD SWITCH.
  - 1 MOUNT SWITCH AND SPACER TO BLOCK ON JAMB ADJUST HEIGHT TO MATCH MAGNET.

FOR ELECTRICAL TORQUE SPECIFICATIONS SEE DWG NO. 128783-01-000

(X-X) FOR ELECTRICAL CALLOUTS SEE DWG NO. 121339-01-000

FIRST USED	09 331C
DO NOT SCALE DRAWING	
TITLE:	WIRING INSTL-BODY, 12V
SHEET 4	PART NO 165466 REV



IMK IL9  
 SPEAKER  
 160867-01-CHT  
 SCREW  
 G1208-12-170 (4)

SATELLITE  
 ELEVATION  
 SENSOR  
 DETAIL FB

LF5N2  
 4

SPEAKER  
 160867-01-CHT  
 SCREW  
 G1208-12-170 (4)

IL9

LSH-1

IL9  
 SPEAKER  
 160867-01-CHT  
 SCREW  
 G1208-12-170 (4)

LF1-2  
 1

SPEAKER  
 160867-01-CHT  
 SCREW  
 G1208-12-170 (4)

IL9 IMK

LF1N2  
 2

SPEAKER  
 160867-01-CHT  
 SCREW  
 G1208-12-170 (4)

IL9

- IMK TV-19"DC, STEREO SYS, VDEO SEL
- IL9 ENTERTAINMENT CENTER-CABOVER
- IL8 TV-20"AC, LCD, STEREO/CD/DVD
- 265 CODES/STANDARDS-CSA/CMVSS
- 1B1 CODES/STANDARDS USA

1B1 265

FIRST USED 09 331C

DO NOT SCALE DRAWING

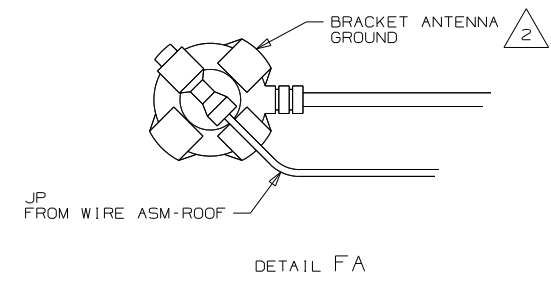
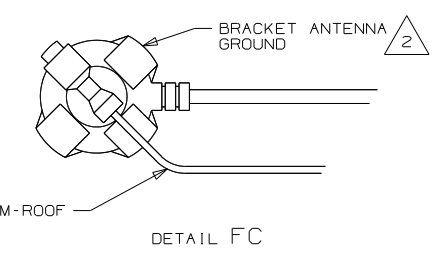
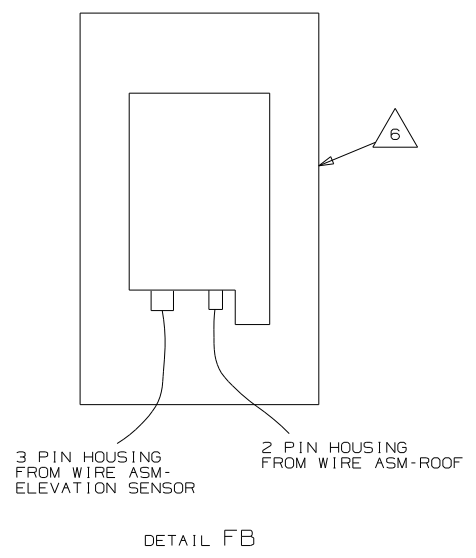
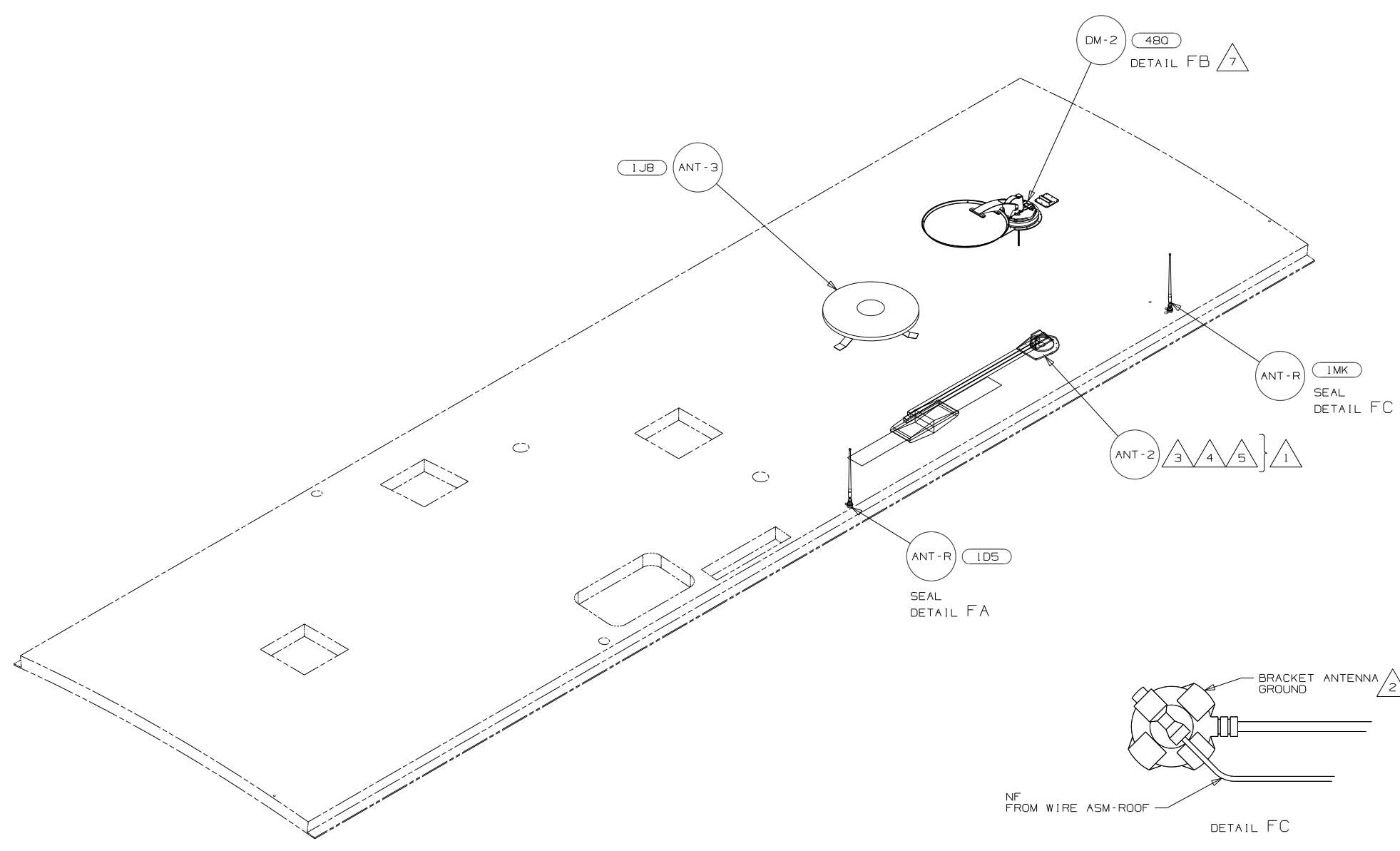
TITLE: WIRING INSTL-BODY, 12V

SHEET 5 PART NO 165466 REV

NOTES:  
 1 NOT USED WITH IL9

FOR ELECTRICAL  
 TORQUE  
 SPECIFICATIONS  
 SEE DWG NO.  
 128783-01-000

(X-X)  
 FOR  
 ELECTRICAL  
 CALLOUTS  
 SEE DWG NO.  
 121339-01-000



- NOTES:
- 7 CONNECT THE ORANGE COAX FROM ROOF ASM TO ONE OF THE 2 GRAY COAX CABLES ON THE SATELLITE DISH, THE OTHER GRAY COAX IS NOT USED.
  - 6 SENSOR SUPPLIED WITH SATELLITE ASSEMBLY.
  - 5 ADD RUBBER BUMPER TO ROOF UNDER EACH END OF ANTENNA IN DOWN POSITION.
  - 4 LOCATE CLAMP TO RETAIN CABLE BUT NOT TO RESTRICT ANTENNA TRAVEL.
  - 3 SEE DRAWING 76319-01-000 FOR INSTALLATION OF TV ANTENNA.
  - 2 WRAP BRACKET LEGS AROUND ANTENNA BASE.
  - 1 NOT USED WITH (1JB)

- (1MK) TV-19"DC, STEREO SYS, VDEO SEL
- (480) SATELLITE DISH & ELEV. SENSOR
- (1JB) TV ANTENNA-OMNIDIRECTIONAL
- (1D5) ENTERTAINMENT CENTR/EXT W/CD
- (265) CODES/STANDARDS-CSA/CMVSS
- (1B1) CODES/STANDARDS USA

FIRST USED	09 331C
DO NOT SCALE DRAWING	
TITLE:	WIRING INSTL-BODY, 12V
SHEET 6	PART NO 165466 REV

FOR ELECTRICAL TORQUE SPECIFICATIONS SEE DWG NO. 128783-01-000

(X-X) FOR ELECTRICAL CALLOUTS SEE DWG NO. 121339-01-000