



**DANGER**

**Danger of electrical shock, burns or death.** Always remove all power sources before attempting any repair, service or diagnostic work. Power can be present from shore power, generator, inverter or battery. All power sources must be disabled and secured before performing any service.

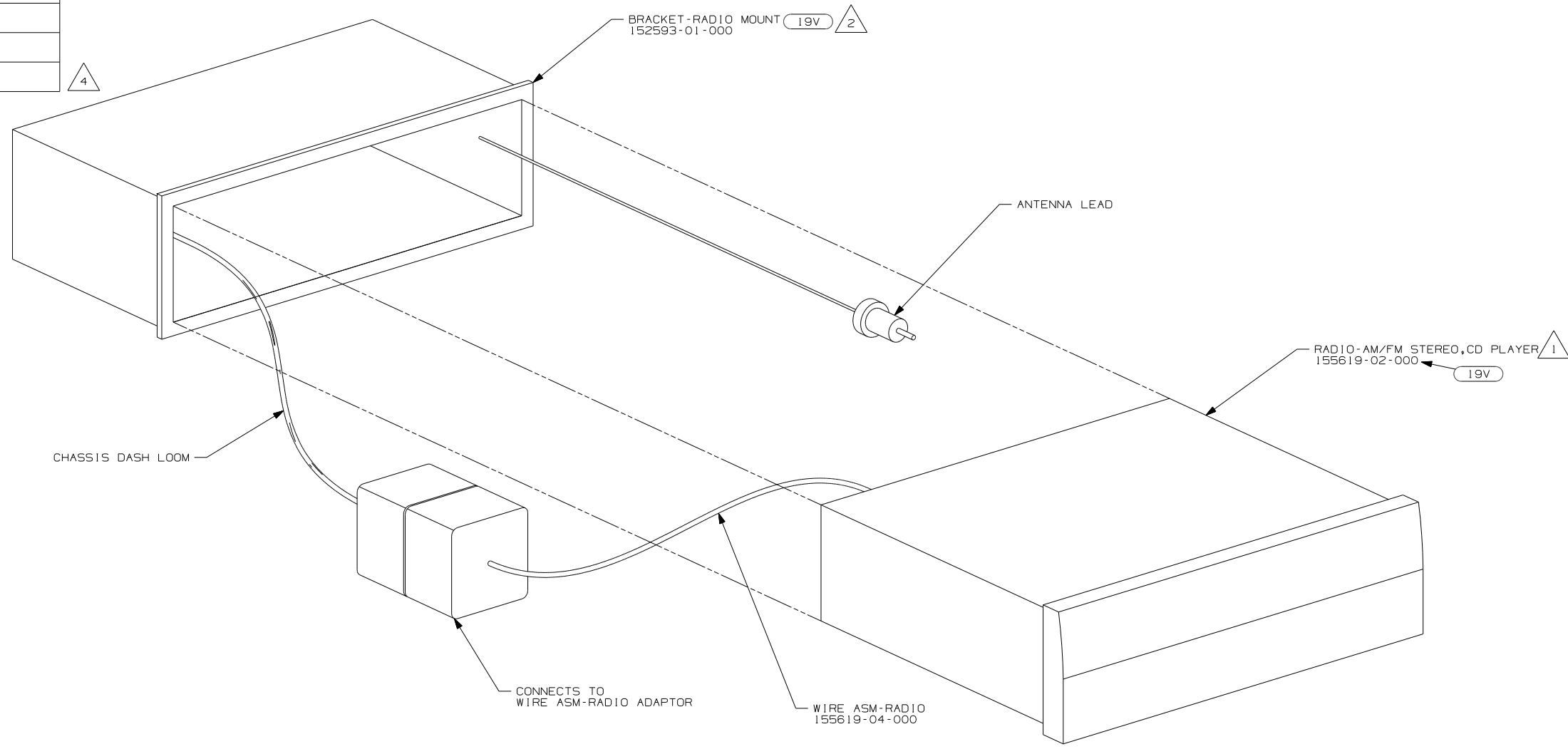


**CAUTION**

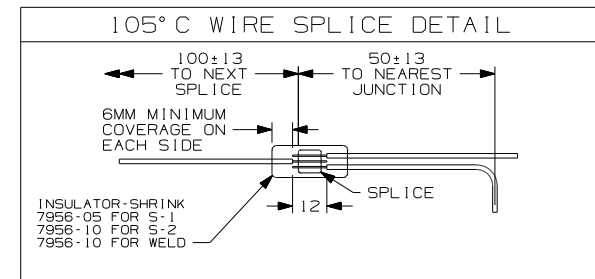
If you lack the skills, tools or equipment to perform diagnostic or repair work leave such work to an authorized Winnebago Industries dealer or other qualified shop.

DRAWING NO.	SHEET	SERIES
160327-01	1	200
160327-02	2	300 & 700
160327-03	3	500
160327-04	4	F,G,M,P,R,S-SERIES
160327-05	5	E-SERIES
160327-06	6	D-SERIES
160327-07	7	B-VAN
160327-08	8	500

RELEASE	REV DATE	DWG NO
A		160327
REV ZONE	REVISION RECORD	DATE
		DFT-ORIG



- NOTES:
- 4 AFTER 03/12/08.
  - 3 BEFORE 03/12/08.
  - 2 INSTALL REAR RADIO SUPPORT BRACKET, ENGAGING T-RAIL ON BOTTOM OF RADIO UNTIL LOCKED IN PLACE.
  - 1 BEND TABS ON ALL 4 SIDES TO SECURE RADIO MOUNTING BRACKET TO DASH MOUNTING BRACKET.



X-X FOR ELECTRICAL CALLOUTS SEE DWG NO. 121339-01-000

**WINNEBAGO** COPYRIGHT 2006 WINNEBAGO INDUSTRIES, INC.

DFT-ORIG	ORIG. DATE
CHKR	ALL DIMENSIONS ARE IN MILLIMETERS
P.E.	
M.E.	FIRST USED
DSNR	08 MOTORHOMES

UNSPECIFIED TOLERANCES ARE:

WHOLE DIM (X)	
ONE-PLACE (X.X)	1
TWO-PLACE (X.XX)	
ANGLE	

THIRD ANGLE PROJECTION

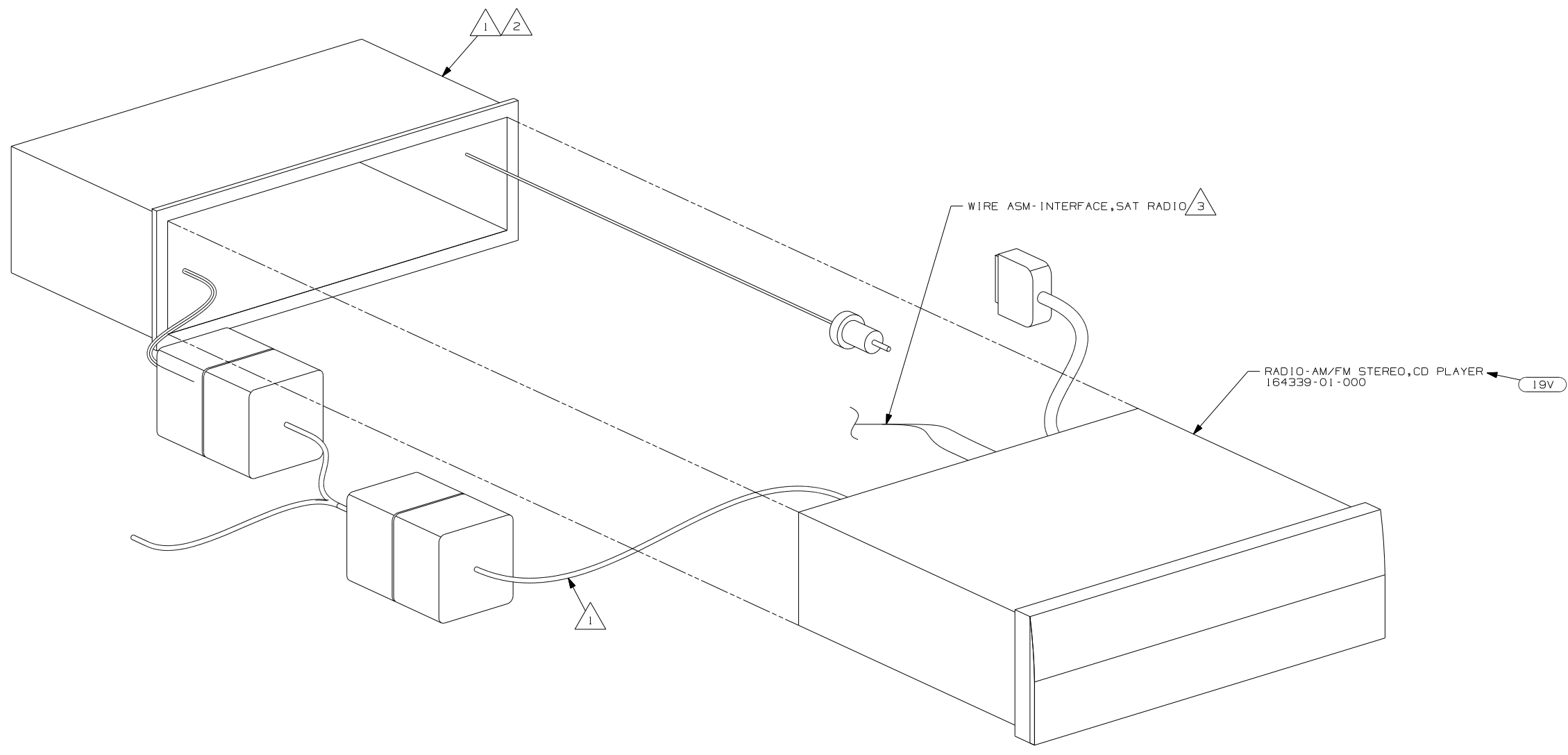
**DO NOT SCALE DRAWING**

TITLE: RADIO INSTL

SHEET 1 of 8 PART NO 160327 REV

REF: 1 3/12/2008

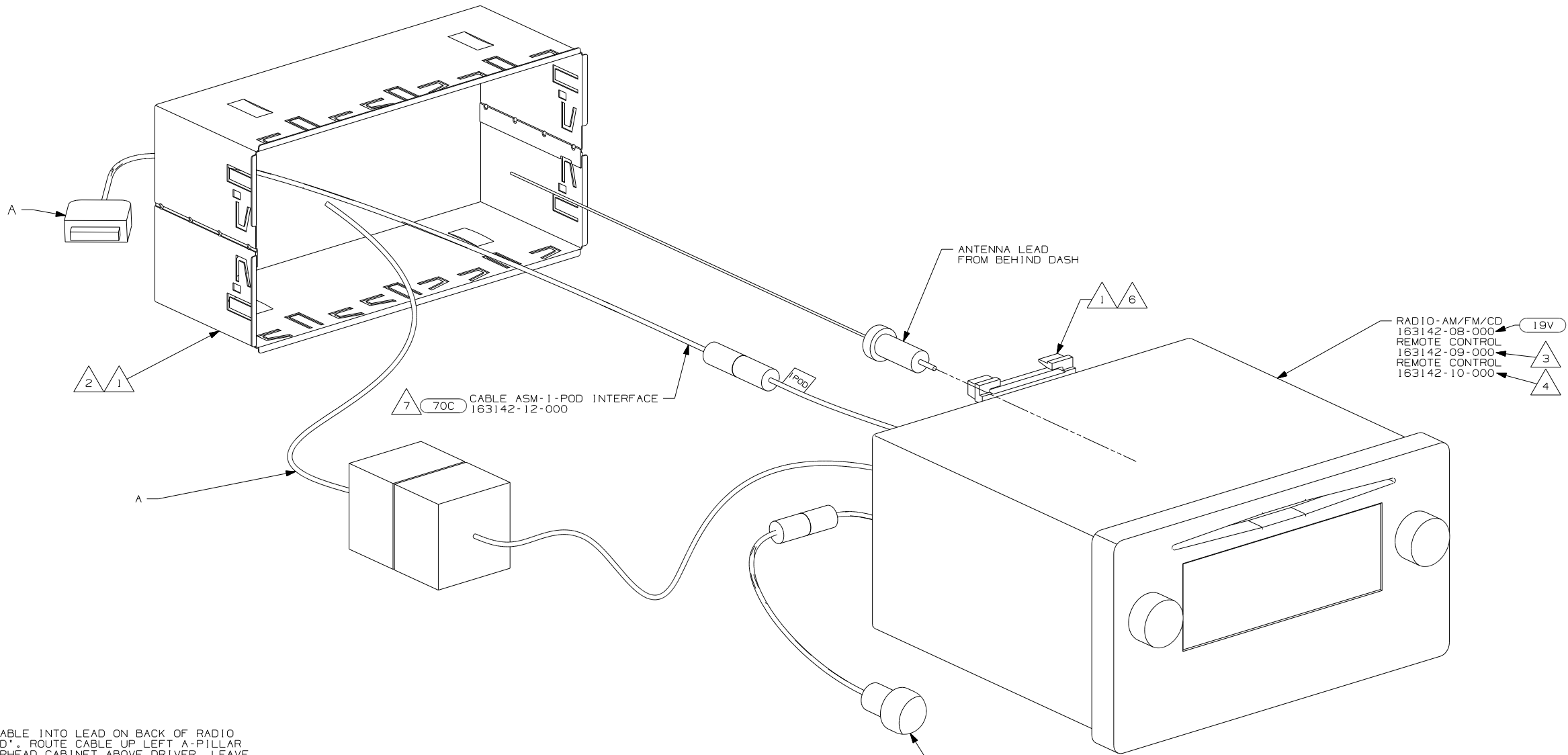




- NOTES:
- 4 I-POD CABLE IS PERMANENTLY ATTACHED TO RADIO. DRILL A 30MM DIAMETER HOLE IN THE TOP, REAR OF THE POCKET UNDER THE RADIO. ROUTE THE I-POD CABLE INTO THE POCKET THROUGH THIS HOLE.
  - 3 TO SATELLITE RECEIVER. SEE ANTENNA INSTL-RADIO & CB FOR ADDITIONAL INFORMATION.
  - 2 BEND TABS ON ALL 4 SIDES TO SECURE MOUNTING BRACKET TO DASH OPENING.
  - 1 SUPPLIED WITH RADIO

19V RADIO-AM/FM STEREO CD PLAYER

FIRST USED	
08 MOTORHOMES	
DO NOT SCALE DRAWING	
TITLE: RADIO INSTL	
SHEET 3	PART NO 160327 REV



- 19V RADIO-AM/FM/CD  
163142-08-000
- 3 REMOTE CONTROL  
163142-09-000
- 4 REMOTE CONTROL  
163142-10-000

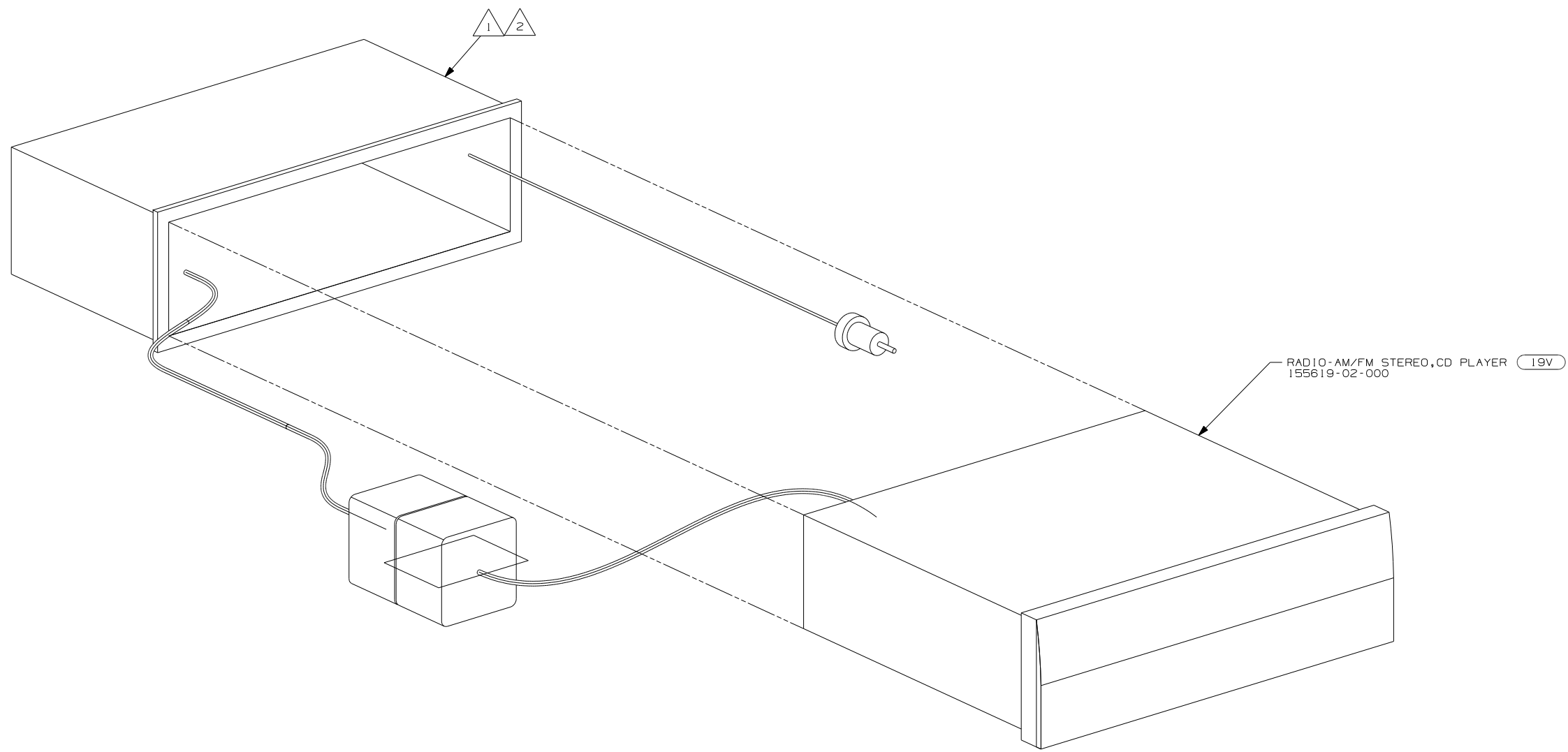
7 70C CABLE ASM-1-POD INTERFACE  
163142-12-000

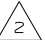

ANTENNA LEAD  
FROM BEHIND DASH

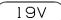
RECEIVER-INFRARED  
163142-11-000

- 7 PLUG 1-POD CABLE INTO LEAD ON BACK OF RADIO MARKED '1-POD'. ROUTE CABLE UP LEFT A-PILLAR AND INTO OVERHEAD CABINET ABOVE DRIVER. LEAVE 600 MM OF CABLE IN OVERHEAD TIED UP WITH WIRE TIE 8343-01-000.
- 6 INSTALL REAR SUPPORT EITHER TO TOP EDGE OR BOTTOM EDGE OF RADIO DEPENDING ON LOCATION ON DASH.
- 5 INSTALL IN DASH BEZEL WITH SUPPLIED NUT. SEE 160588 FOR LOCATION.
- 4 INSTALL ON STEERING WHEEL PER DRAWING 160588.
- 3 TO BE SUPPLIED IN WINNEBAGOS OWNERS CASE
- 2 BEND TABS ON ALL 4 SIDES TO SECURE MOUNTING BRACKET TO DASH OPENING.
- 1 SUPPLIED WITH RADIO.

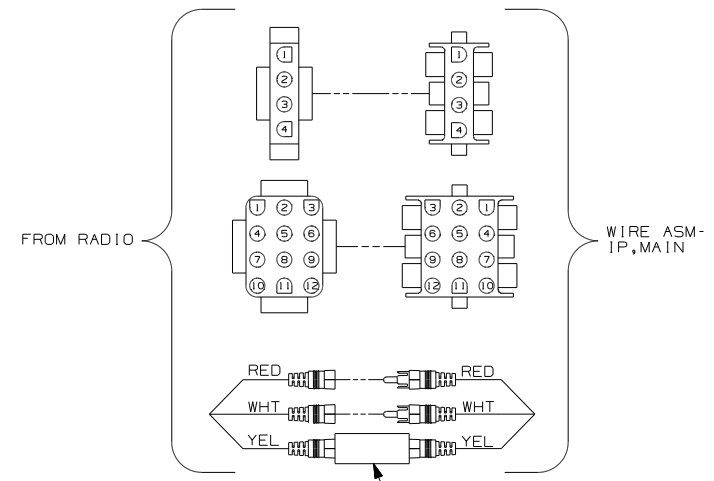
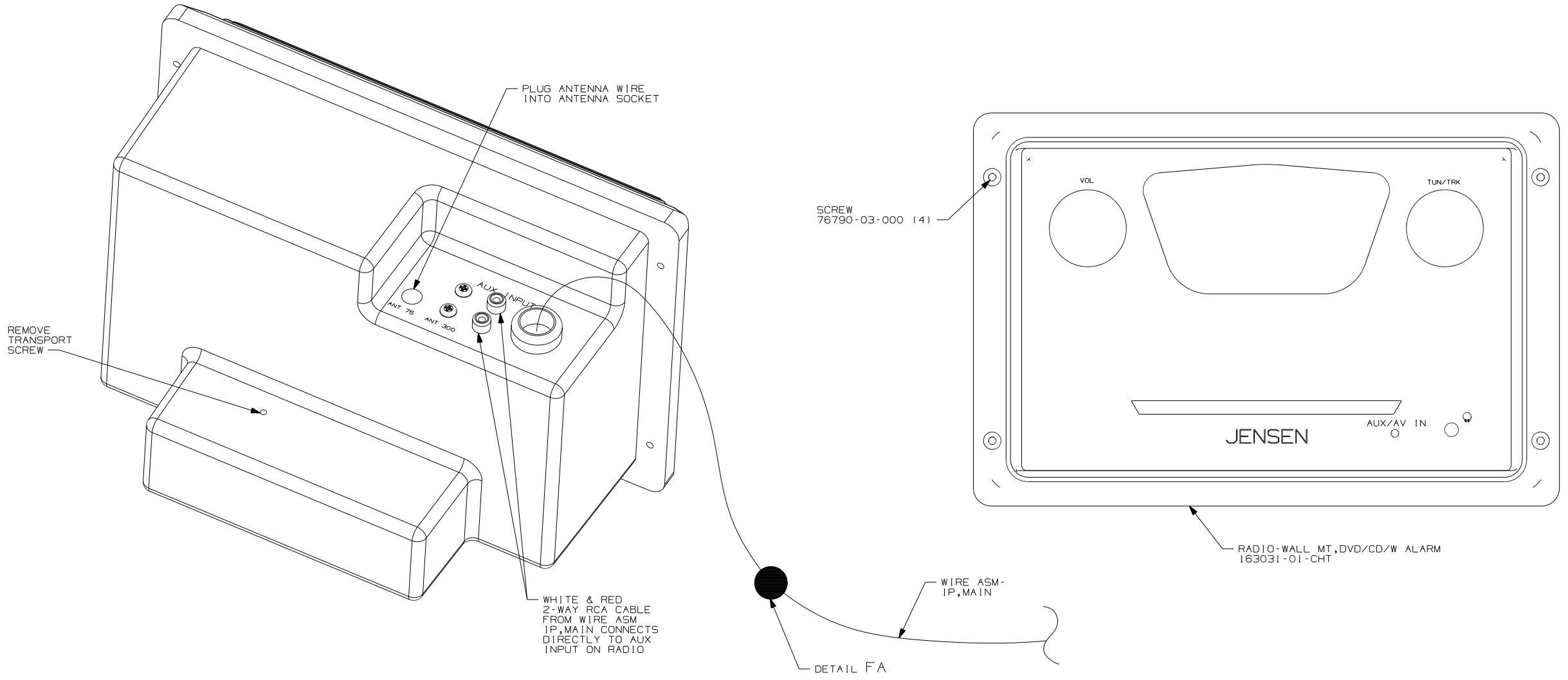
70C	RADIO-SATELLITE
19V	RADIO-AM/FM STEREO CD PLAYER
FIRST USED	
08 MOTORHOMES	
DO NOT SCALE DRAWING	
TITLE:	
RADIO INSTL	
SHEET 4	PART NO 160327 REV



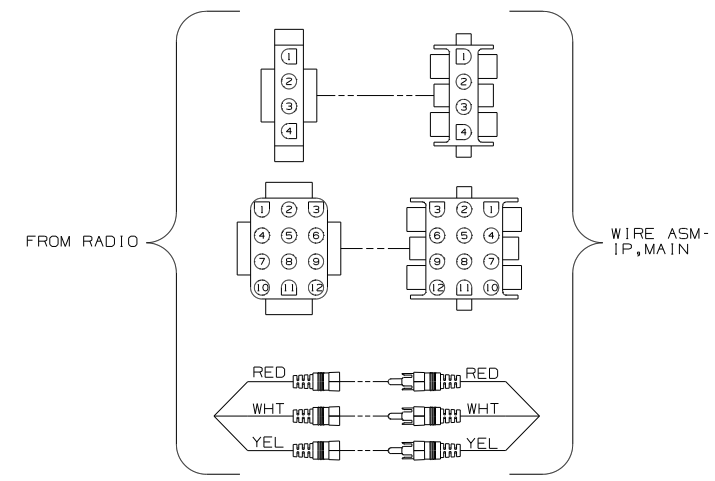
- NOTES:
-  BEND TABS ON ALL 4 SIDES TO SECURE MOUNTING BRACKET TO DASH OPENING.
  -  SUPPLIED WITH RADIO

 RADIO-AM/FM STEREO CD PLAYER

FIRST USED	08 MOTORHOMES	
TITLE:	DO NOT SCALE DRAWING	
SHEET	PART NO	REV
	160327	



DETAIL FA 40B



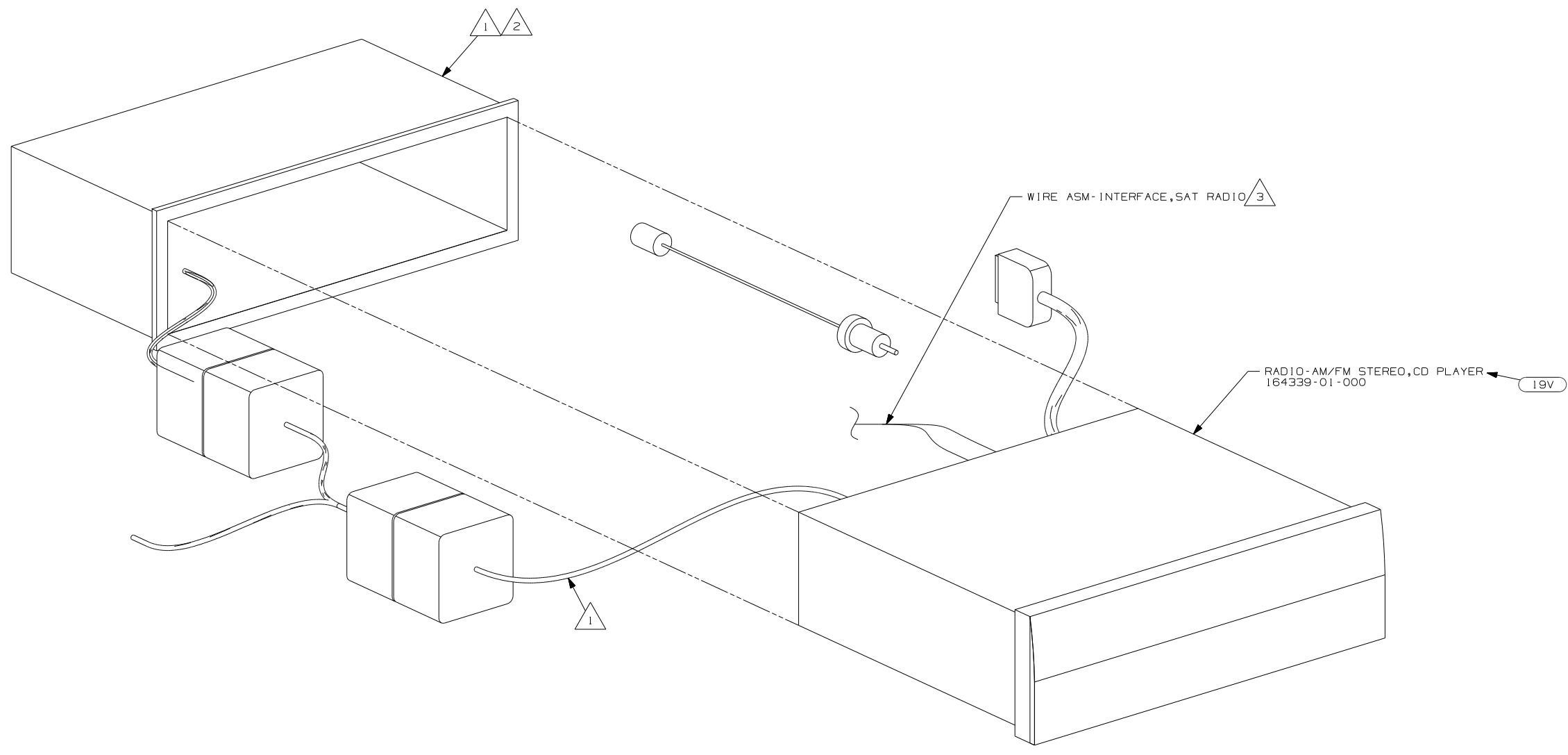
DETAIL FA 40A

- 40B INVERTER-DC/AC, 300 WATT
- 40A INVERTER-DC/AC WITHOUT
- 255 RADIO/AM/FM/CD/DVD PLAYER

1 CONNECTS IN-LINE OF YELLOW VIDEO CABLE. WRAP BOTH ENDS OF FILTER CONNECTIONS WITH TAPE 8363-01-000 TO SECURE FILTER TO WIRE ASM.

NOTES:

FIRST USED		08 D-SERIES	
DO NOT SCALE DRAWING			
TITLE:		RADIO INSTL	
SHEET 6	PART NO	160327	REV

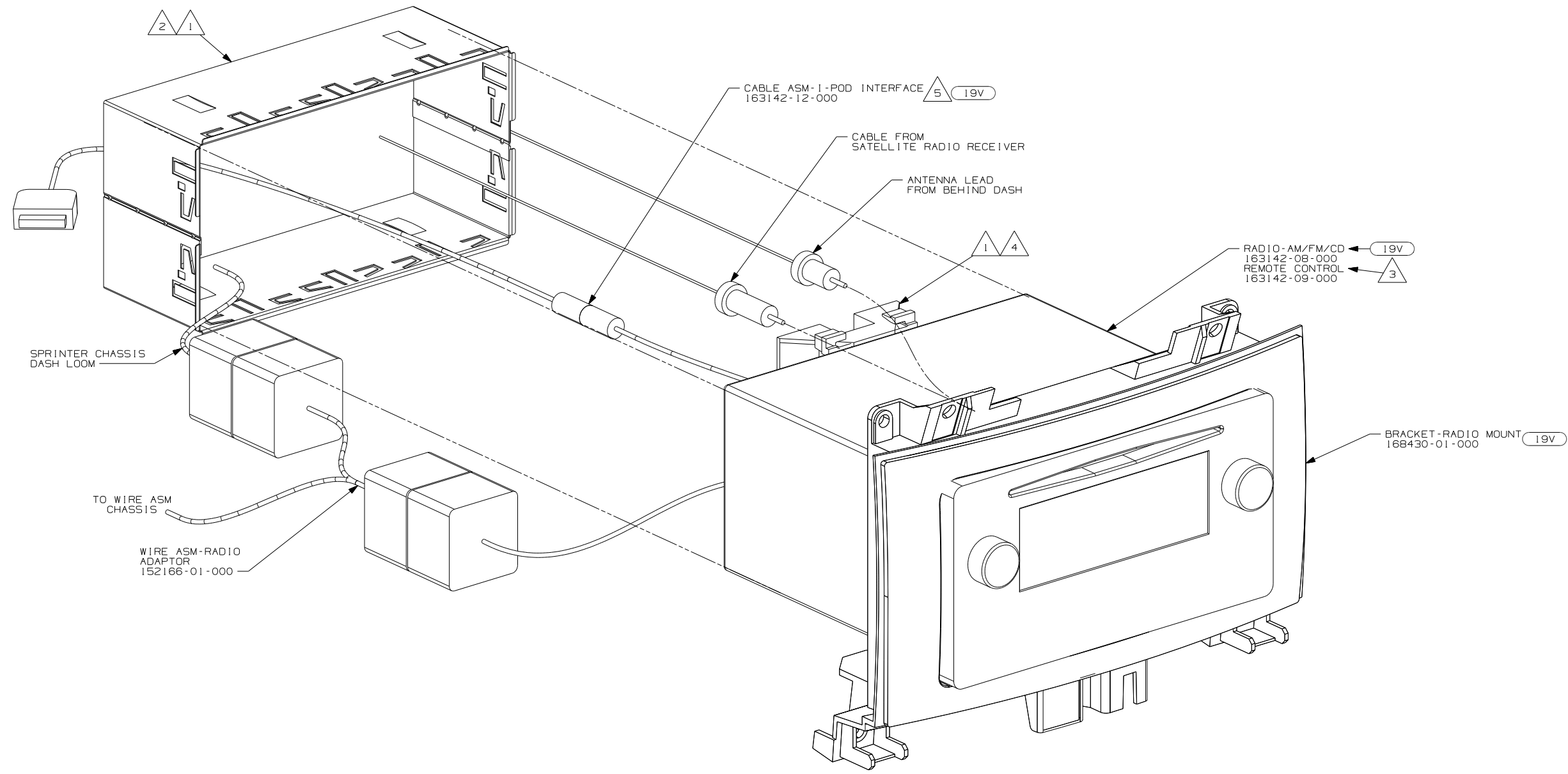


- NOTES:
- 4 I-POD CABLE IS PERMANENTLY ATTACHED TO RADIO. DRILL A 30MM DIAMETER HOLE IN THE TOP, REAR OF THE POCKET UNDER THE RADIO. ROUTE THE I-POD CABLE INTO THE POCKET THROUGH THIS HOLE.
  - 3 TO SATELLITE RECEIVER. SEE ANTENNA INSTL-RADIO & CB FOR ADDITIONAL INFORMATION.
  - 2 BEND TABS ON ALL 4 SIDES TO SECURE MOUNTING BRACKET TO DASH OPENING.
  - 1 SUPPLIED WITH RADIO

19V RADIO-AM/FM STEREO CD PLAYER

FIRST USED	
08 MOTORHOMES	
DO NOT SCALE DRAWING	
TITLE: RADIO INSTL	
SHEET 7	PART NO 160327 REV





- 5 PLUG I-POD CABLE INTO LEAD ON BACK OF RADIO MARKED I-POD. DRILL 16 MM DIAMETER HOLE IN THE TRAY ABOVE THE RADIO. THE HOLE IS TO BE LOCATED ON THE PASSENGER SIDE OF THE TRAY 50 MM FROM THE END NEAREST THE WINDSHIELD. ROUTE I-POD CABLE INTO THE TRAY AND LEAVE 200 MM OF WIRE IN THE TRAY.
- 4 INSTALL REAR SUPPORT TO TOP EDGE OF RADIO.
- 3 TO BE SUPPLIED IN WINNEBAGOS OWNERS CASE
- 2 BEND TABS ON ALL 4 SIDES TO SECURE MOUNTING BRACKET TO DASH OPENING.
- 1 SUPPLIED WITH RADIO.

NOTES:

- 70C RADIO - SATELLITE
- 19V RADIO-AM/FM STEREO CD PLAYER
- 265 CODES/STANDARDS-CSA/CMVSS
- 1B1 CODES/STANDARDS USA

FIRST USED	
08 MOTORHOMES	
DO NOT SCALE DRAWING	
TITLE: RADIO INSTL	
SHEET 8	PART NO 160327 REV

FOR ELECTRICAL TORQUE SPECIFICATIONS SEE DWG NO. 128783-01-000

X-X FOR ELECTRICAL CALLOUTS SEE DWG NO. 121339-01-000