



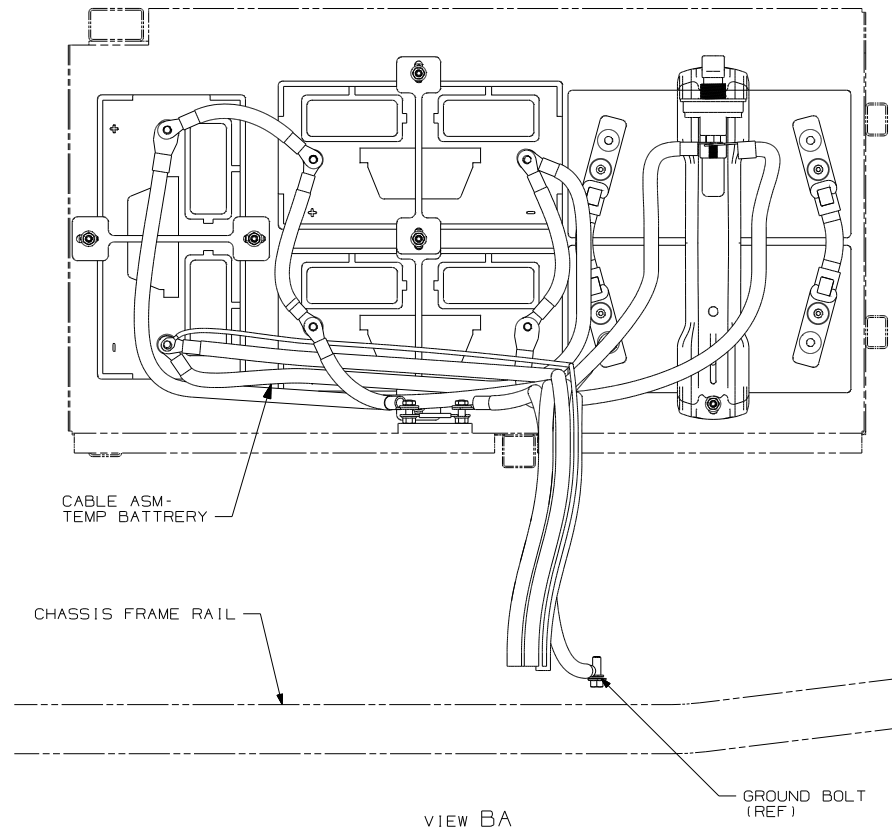
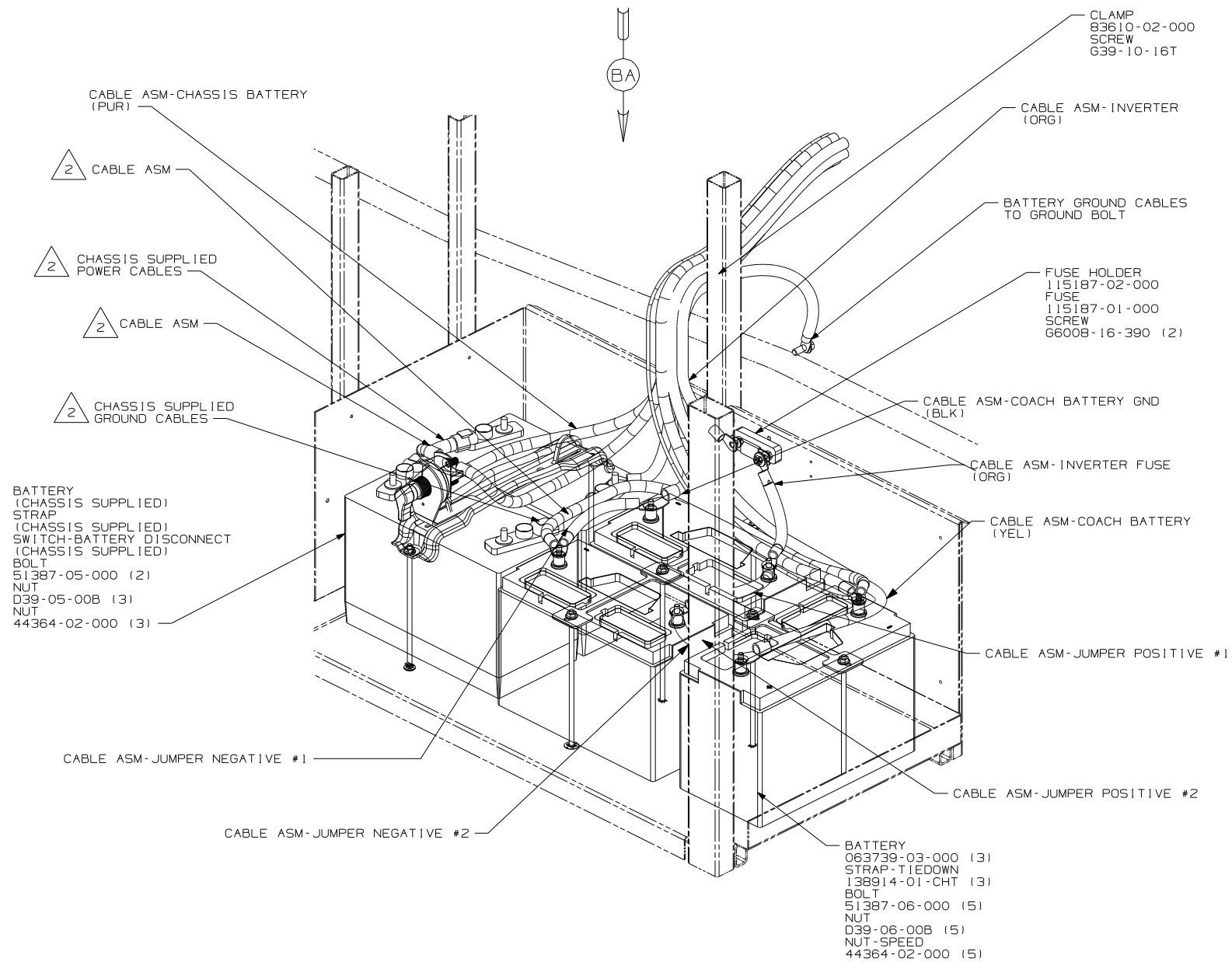
DANGER

Danger of electrical shock, burns or death. Always remove all power sources before attempting any repair, service or diagnostic work. Power can be present from shore power, generator, inverter or battery. All power sources must be disabled and secured before performing any service.



CAUTION

If you lack the skills, tools or equipment to perform diagnostic or repair work leave such work to an authorized Winnebago Industries dealer or other qualified shop.



3 CONNECT RING TERMINAL OF CABLE ASM-TEMP BATTERY TO NEGATIVE POST AS SHOWN AND ROUTE CABLE WITH NEGATIVE BATTERY CABLE TO INVERTER.

2 SUPPLIED WITH CHASSIS.
1. SEE WIRING INSTL-CHASSIS FOR ADDITIONAL INFORMATION.

NOTES:

1LP FRTL 29,410 350 6.7L 6 SPEED
265 CODES/STANDARDS-CSA/CMVSS
1B1 CODES/STANDARDS USA

1LP 1B1 265

08 P-SER
DO NOT SCALE DRAWING

TITLE: BATTERY INSTL

SHEET 2 PART NO 163666 REV

FOR ELECTRICAL
TORQUE
SPECIFICATIONS
SEE DWG NO.
128783-01-000

FOR ELECTRICAL
CALLOUTS
SEE DWG NO.
121339-01-000