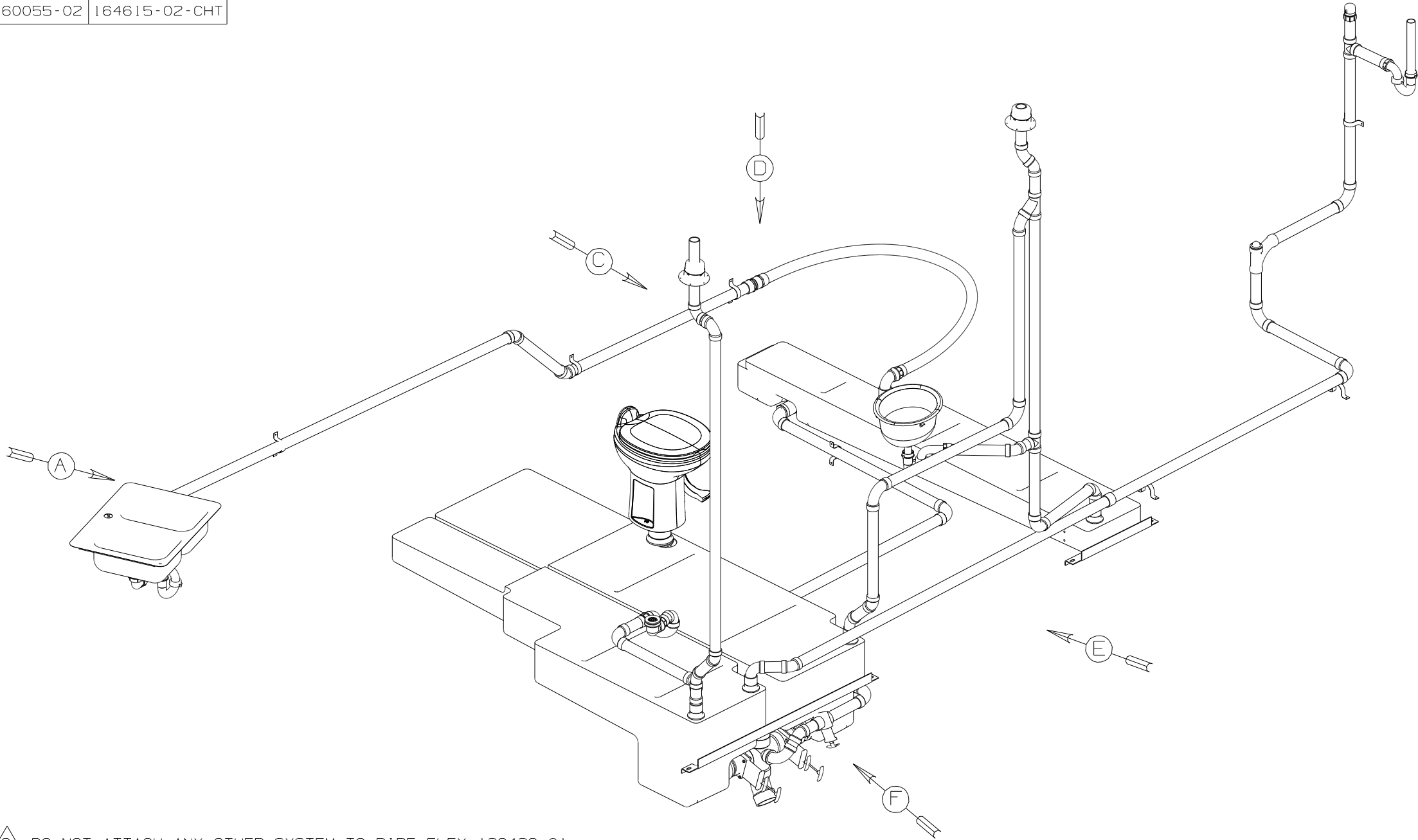



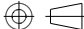
DWG NO	SINK-LAVATORY
160055-01	156661-01-CHT
160055-02	164615-02-CHT

RELEASE	REV DATE	DWG NO	160055
REV ZONE	REVISION RECORD	DATE	DFTR-ORIG

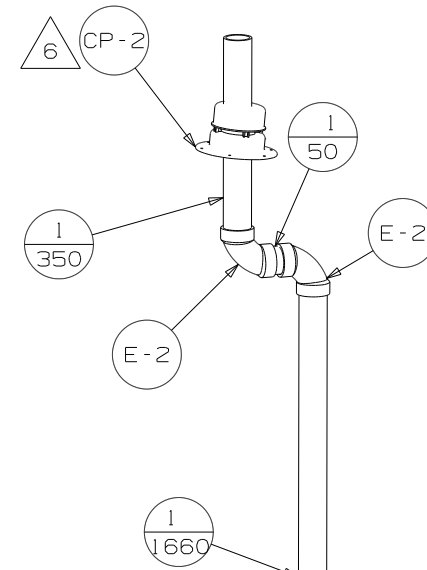
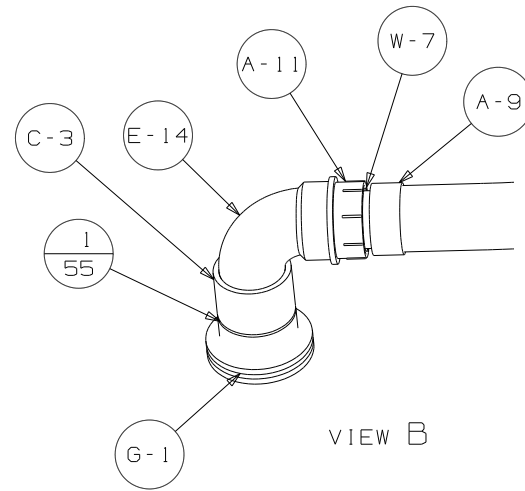


9. DO NOT ATTACH ANY OTHER SYSTEM TO PIPE-FLEX 126426-01.
8. SECURE DRAINAGE PIPES TO CABINET USING WIRE TIE 108046-02-000, AND SCREW G67-10-12B AT INTERVALS OF NOT MORE THAN 4 FEET APART.
7. SECURE VENT PIPE TO FLOOR WITH CLAMP 62401-02-000 (2), SCREW G67-10-12B (2), BRACKET 136878-01-CHT (2).
6. VENT PIPE MUST PROJECT 51 MIN AND 64 MAX ABOVE ROOF FOR PROPER FIT AND FUNCTION.
5. SEAL AROUND SHOWER WITH SILICONE.
4. ALL EXTERIOR OPENINGS AROUND PIPE TO BE SEALED WITH 131264-05-000.
3. ALL PIPE AND FITTINGS TO BE ASSEMBLED WITH SOLVENT 4020-01-000 (USA), 4020-02-000 (CAN)
2. SLOPE OF TRAP ARM MUST BE 6 PER 305 mm.
1. SLOPE OF HORIZONTAL PIPING TO BE MINIMUM OF 3 PER 305 mm.

- 1B1 CODES/STANDARDS-USA
- 265 CODES/STDS-CSA-/CMVSS
- 54E WASHER/DRYER
- 21M WASHER/DRYER PREP

		COPYRIGHT 2007 WINNEBAGO INDUSTRIES, INC.	
DFTN		ORIG. DATE	
CHKR		ALL DIMENSIONS ARE IN MILLIMETERS	
P.E.		FIRST USED	
M.E.		08 M39W	
DSNR			
UNSPECIFIED TOLERANCES ARE:		MATERIAL:	
WHOLE DIM (X) : 3			
ONE-PLACE (X,X) : 1.5			
TWO-PLACE (X,XX) : 0.50			
ANGLE : 1°			
THIRD ANGLE PROJECTION			
DO NOT SCALE DRAWING			
TITLE: DRAINAGE SYSTEM INSTL			
SHEET 1 OF 4		PART NO 160055	REV
REF:		1 10/26/2007	

X-X	FOR DRAINAGE CALLOUTS SEE DWG NO 116229-01-000
-----	--



SINK-SST,DBL LG/SM BASIN
161614-01-CHT
STRAINER
92303-01-000 (2)
SCREW
G67-10-08B (8)
SEAL
(A/R)

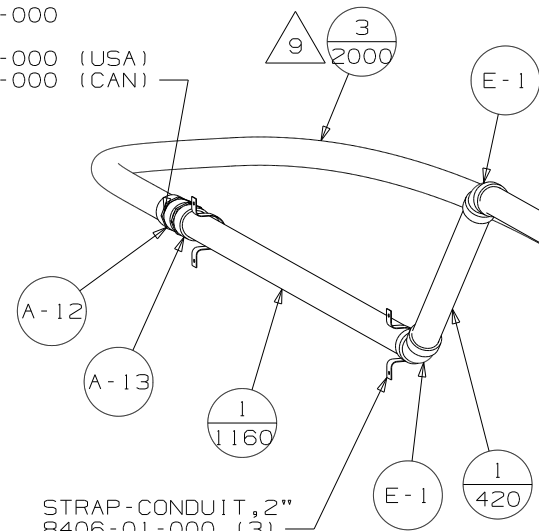
TOILET-STYLE II,W/SPRAYER
160815-01-CHT
SCREW
87721-01-000(8)

SHOWER INSTL
147868-03-000
STRAINER
66440-01-000
WASHER
127440-02-CHT

ELBOW-DRAIN
131486-01-000

PRIMER
126427-02-000
CEMENT
126427-01-000 (USA)
126427-03-000 (CAN)

STRAP-CONDUIT,2"
8406-01-000 (3)



B

VM-1

1/2575

E-3

T-1

G-2

F-3

1B1

1/200

265

1/380

P-1

P-3

A-15

1B1

265

W-7

P-4

E-14

1/125

1/55

W-7

1/440

E-6

C-3

1/55

G-1

E-5

1/45

7

T-1

1/195

E-1

VIEW A

FIRST USED		08 M39W	
DO NOT SCALE DRAWING			
TITLE: DRAINAGE SYSTEM INSTL			
SHEET 2	PART NO	160055	REV

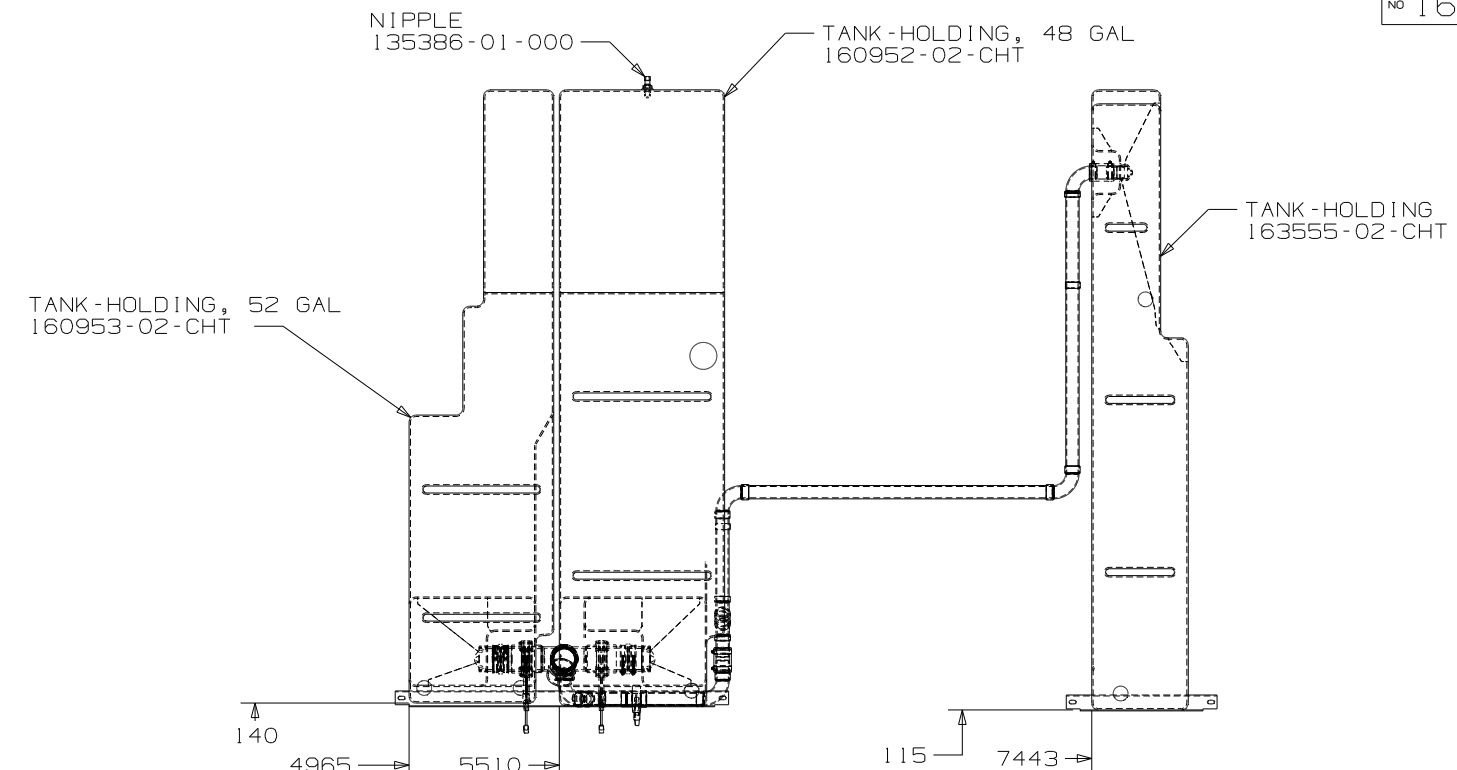
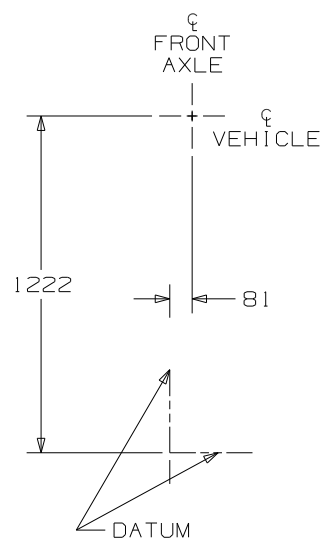
PIPE- STAND
130234-01-000
PLUG
61420-10-000

SINK-LAVATORY
(SEE TAB)
WASTE ASM
106116-01-CHT
SEAL
91255-02-000

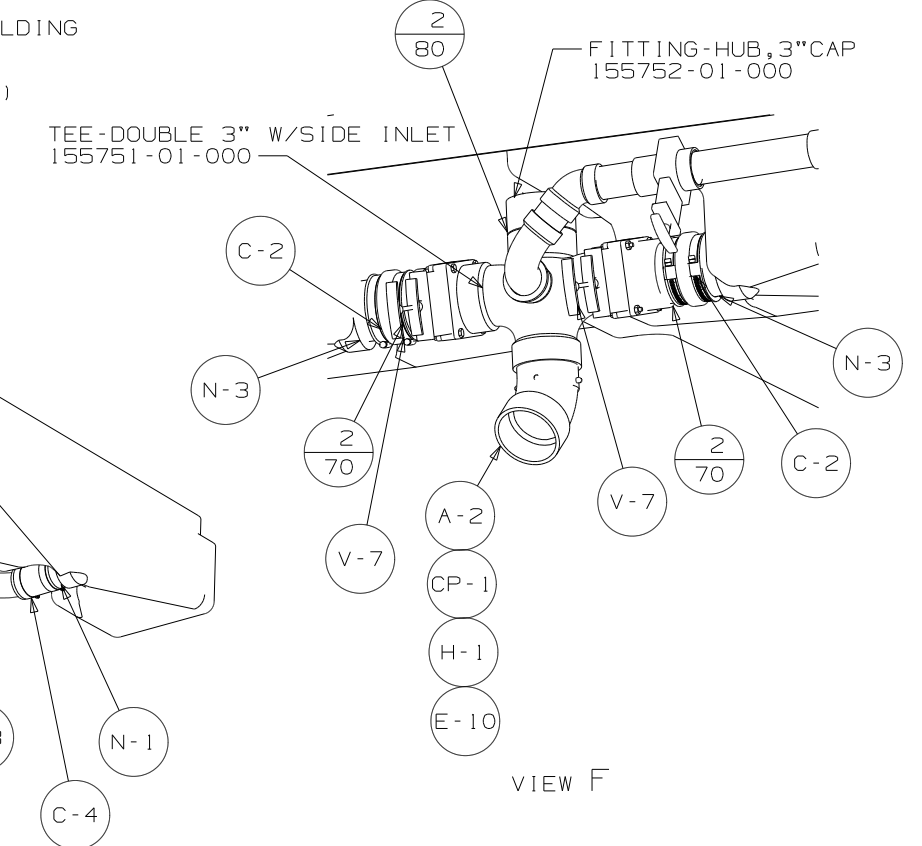
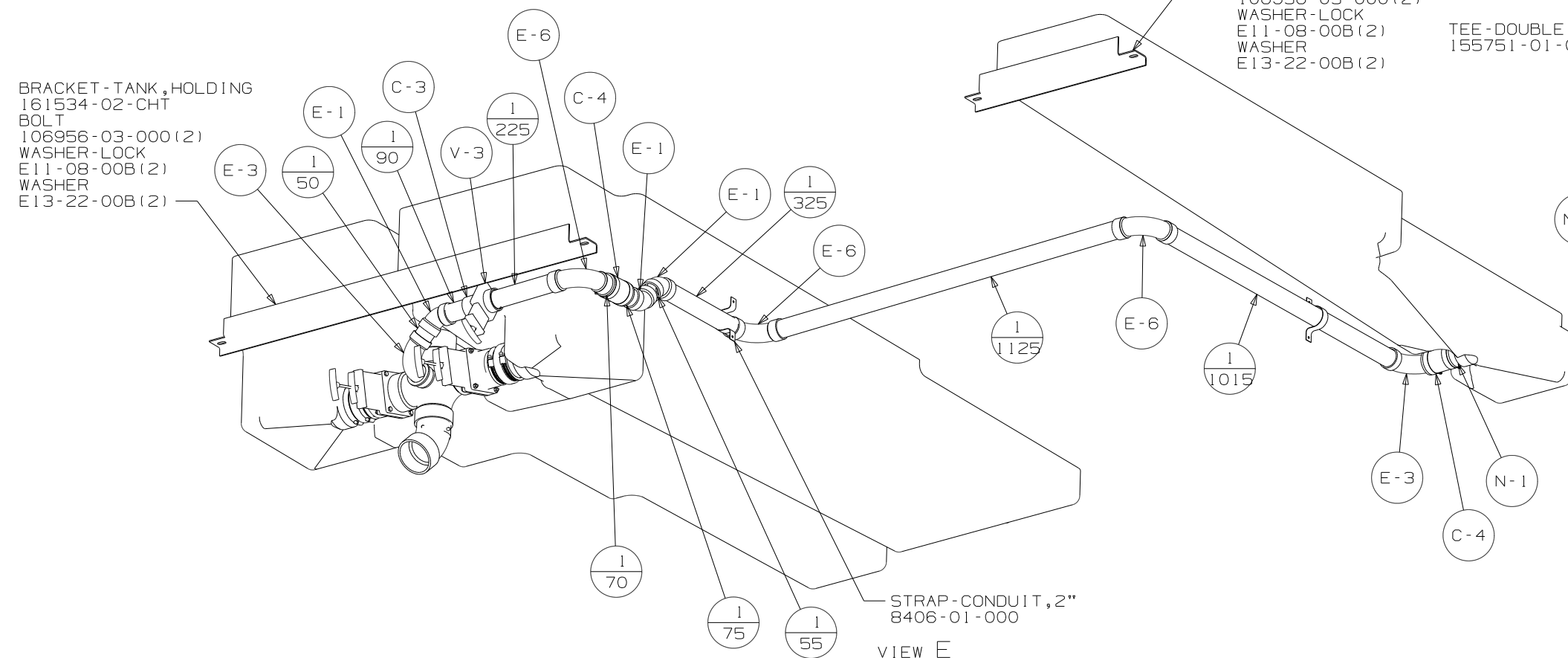
STRAP-CONDUIT, 2"
8406-01-000 (3)

VIEW C

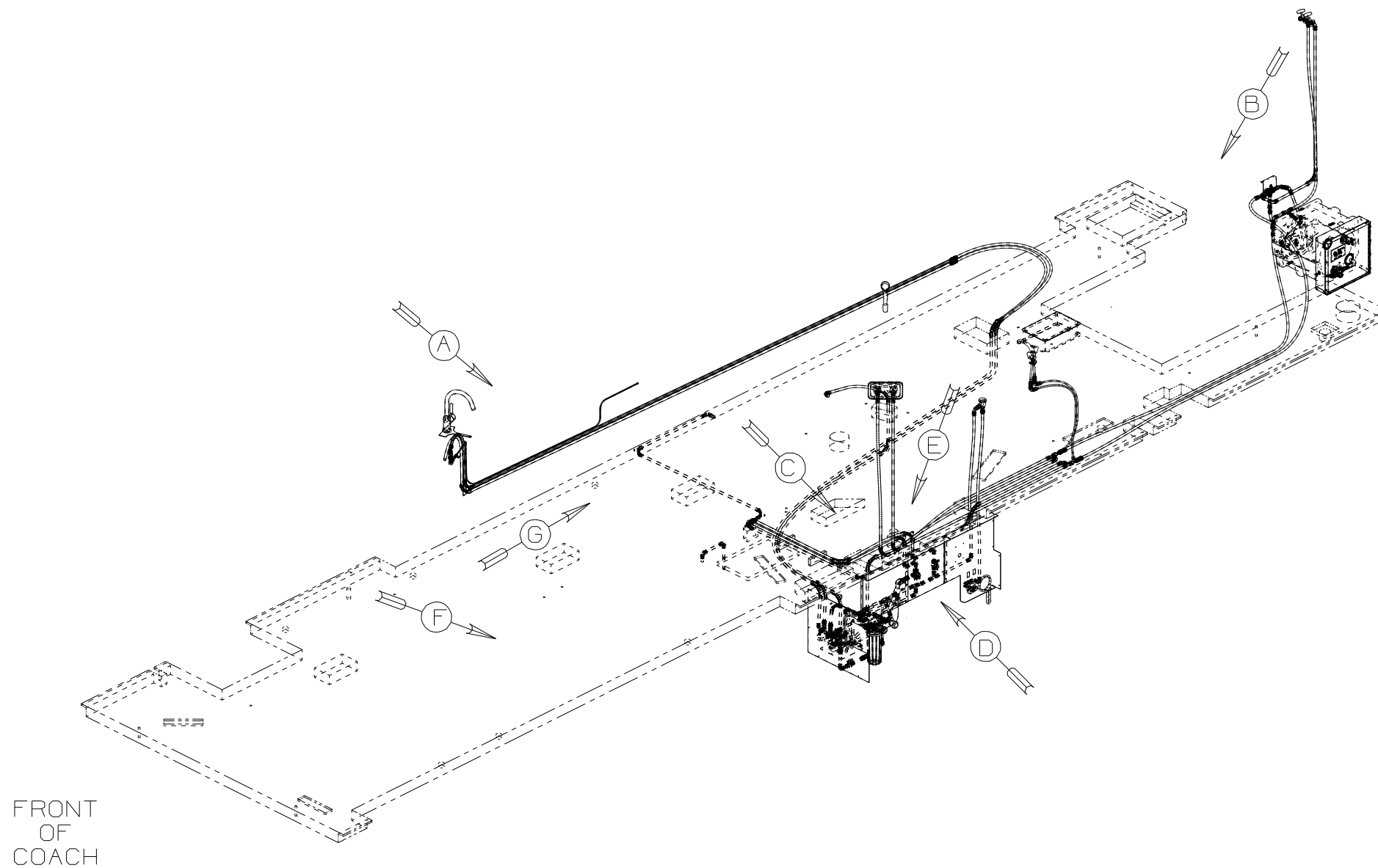
FIRST USED		08 M39W	
DO NOT SCALE DRAWING			
TITLE: DRAINAGE SYSTEM INSTL			
SHEET 3		PART NO 160055	REV



VIEW D



FIRST USED		08 M39W	
DO NOT SCALE DRAWING			
TITLE: DRAINAGE SYSTEM INSTL			
SHEET 4	PART NO	160055	REV



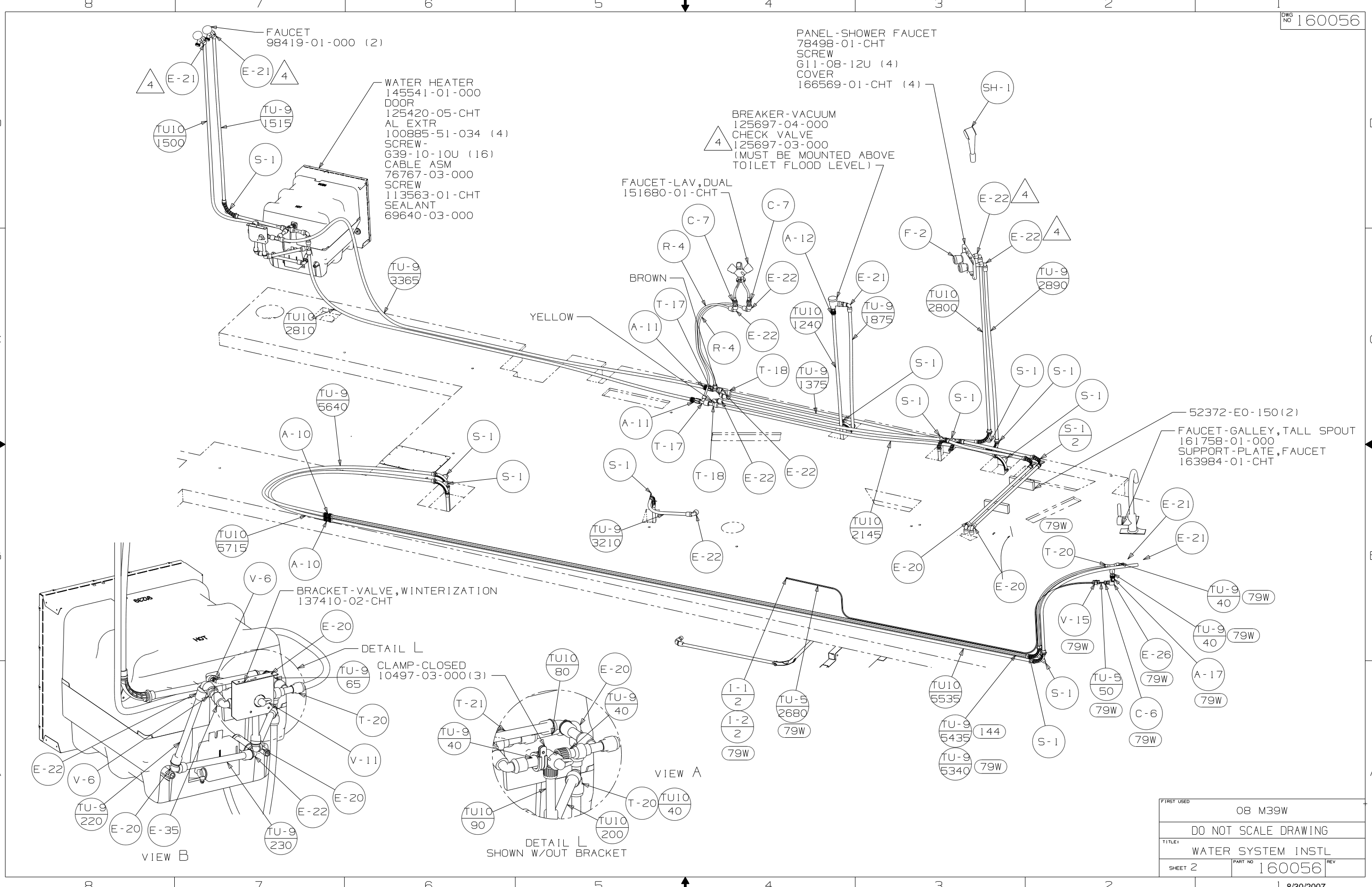
79W REFRIGERATOR-4 DOOR
144 REFRIGERATOR-DOUBLE DOOR

- △6 ADD TEFLON TAPE 10405-03-000.
△5 ADD TEFLON TAPE 10405-02-000.
△4 ADD TEFLON TAPE 10405-01-000.
3. ALL TUBING TO BE SECURED AT 1200 INTERVALS MAXIMUM WITH CLAMP 10495-01-000 AND SCREW G67-10-12B OR EQUIVALENT.
2. TUBING TO BE INSTALLED WITH SUFFICIENT SLOPE TO PROVIDE DRAINAGE TO NEAREST VALVE.
1. PLASTIC FITTINGS TO BE SEALED WITH SEALANT 84456-01-000.

NOTES:

WINNEBAGO		COPYRIGHT 2007 WINNEBAGO INDUSTRIES, INC.	
DTFR	ORIG. DATE	ALL DIMENSIONS ARE IN MILLIMETERS	
CHKR		FIRST USED	
P.E.		08 M39W	
M.E.			
DSNR			
UNSPECIFIED TOLERANCES ARE:		MATERIAL:	
HOLE DIM (X)		± 3	
ONE-PLACE (X,X)		± 1.5	
TWO-PLACE (X,XX)		± 0.50	
ANGLE		± 1°	
THIRD ANGLE PROJECTION			
DO NOT SCALE DRAWING			
TITLE: WATER SYSTEM INSTL			
SHEET 1 OF 4		PART NO 160056	
REF1		1 8/30/2007	

X-X
FOR
WATER
CALLOUTS
SEE DWG NO
116230-01-000



FAUCET
98419-01-000 (2)

WATER HEATER
145541-01-000
DOOR
125420-05-CHT
AL EXTR
100885-51-034 (4)
SCREW-
G39-10-10U (16)
CABLE ASM
76767-03-000
SCREW
113563-01-CHT
SEALANT
69640-03-000

PANEL-SHOWER FAUCET
78498-01-CHT
SCREW
G11-08-12U (4)
COVER
166569-01-CHT (4)

BREAKER-VACUUM
125697-04-000
CHECK VALVE
125697-03-000
(MUST BE MOUNTED ABOVE
TOILET FLOOD LEVEL)

FAUCET-LAV, DUAL
151680-01-CHT

52372-E0-150 (2)
FAUCET-GALLEY, TALL SPOUT
161758-01-000
SUPPORT-PLATE, FAUCET
163984-01-CHT

BRACKET-VALVE, WINTERIZATION
137410-02-CHT

DETAIL L
CLAMP-CLOSED
10497-03-000 (3)

DETAIL L
SHOWN W/OUT BRACKET

VIEW A

VIEW B

FIRST USED		08 M39W	
DO NOT SCALE DRAWING			
TITLE: WATER SYSTEM INSTL			
SHEET 2	PART NO	160056	REV

WATER CENTER ASM
157511-03-000

BROWN

TU-9
300

TU10
40

PANEL ASM-WATER SYSTEM
163564-01-XXX

CLAMP-CLOSED
10497-03-000
RIVET
113133-03-000

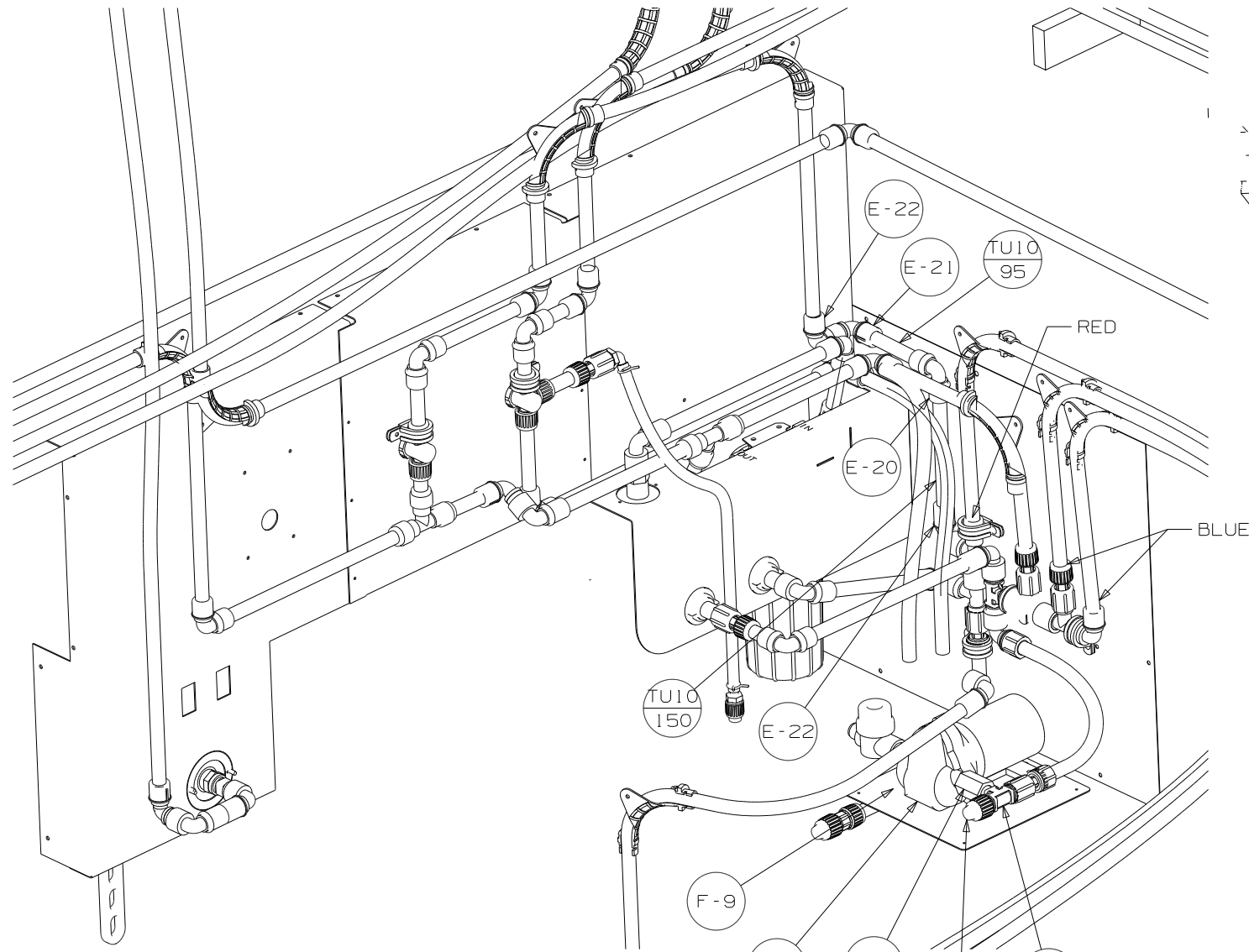
PANEL-WATER PUMP
149477-02-CHT
RIVET
113133-01-CHT (4)

FILTER WRENCH
(REF)

VIEW C

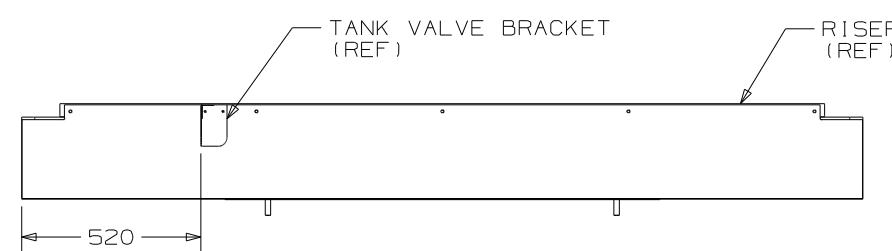
VIEW D

FIRST USED		08 M39W	
DO NOT SCALE DRAWING			
TITLE: WATER SYSTEM INSTL			
SHEET 3	PART NO	160056	REV

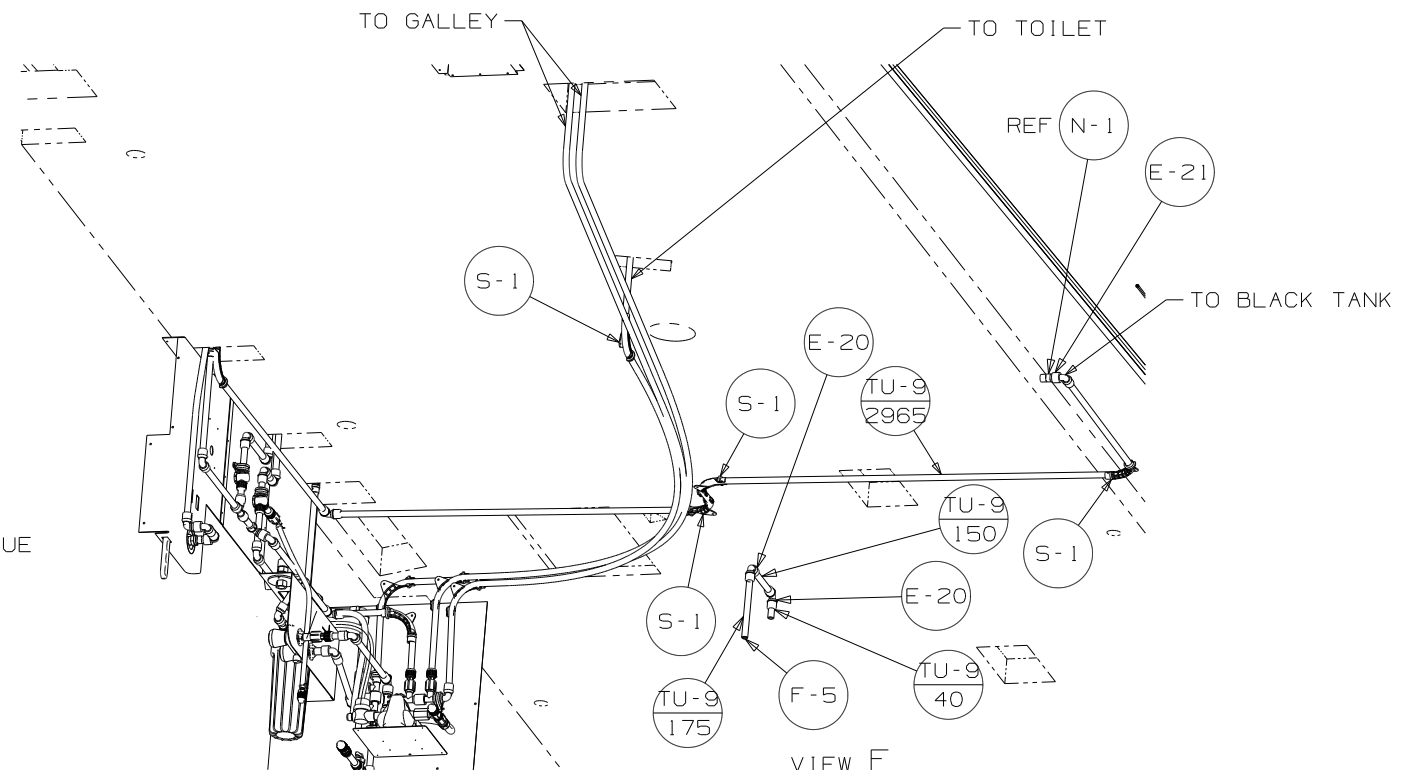


VIEW E
FLOOR NOT SHOWN

SCREW
G39-10-20U (4)



VIEW G
FRONT SIDE OF RISER



VIEW F

FIRST USED	08 M39W		
TITLE	DO NOT SCALE DRAWING		
	WATER SYSTEM INSTL		
SHEET 4	PART NO	160056	REV