



DANGER

Danger of electrical shock, burns or death. Always remove all power sources before attempting any repair, service or diagnostic work. Power can be present from shore power, generator, inverter or battery. All power sources must be disabled and secured before performing any service.

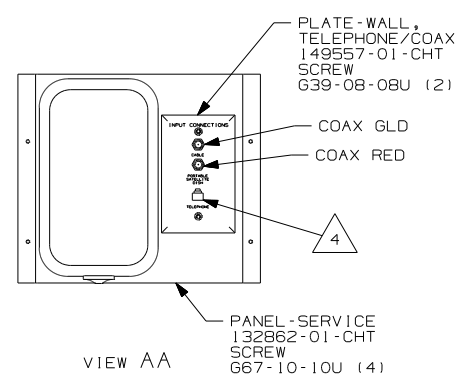


CAUTION

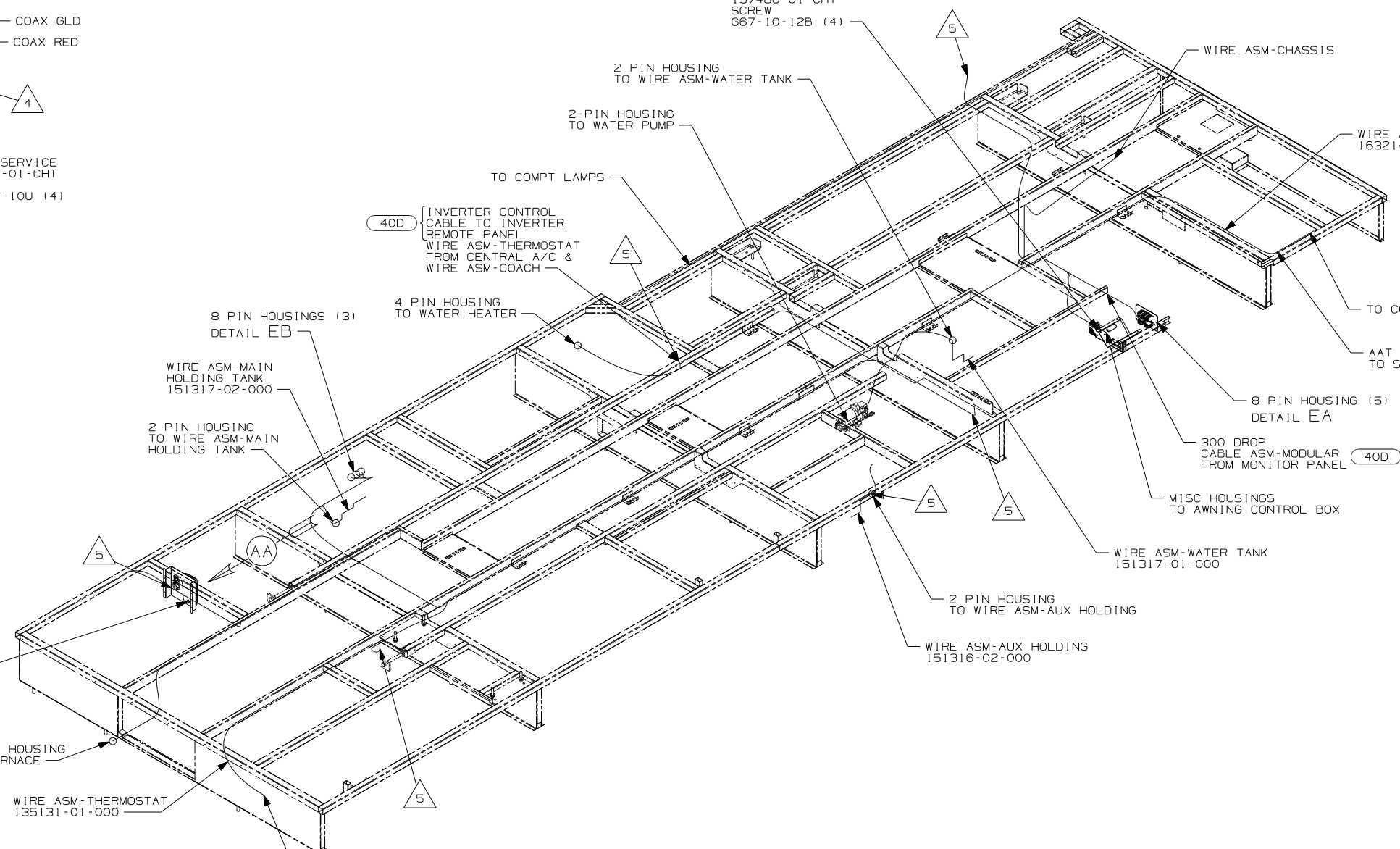
If you lack the skills, tools or equipment to perform diagnostic or repair work leave such work to an authorized Winnebago Industries dealer or other qualified shop.

DRAWING NO.	FEATURE
163176-01	(WIN)
163176-02	(ITA)

RELEASE	REV DATE	DWG NO
A		163176
REV ZONE	REVISION RECORD	DATE DFR-ORIG



- PANEL-RECEPTACLE
151376-02-CHT
ADAPTER
82134-01-000
NUT
82136-01-000
LABEL
157486-01-CHT
SCREW
G67-10-12B (4)



4 NW, WE TO COMPARTMENT LAMP TELEPHONE WIRE TO PLATE-WALL,PHONE COAX (RED) COAX (GLD) TO PLATE-WALL,PHONE

- 40D INVERTER-DC/AC,600 WATT
- ITA ITASCA ONLY
- WIN WINNEBAGO ONLY
- 265 CODES/STANDARDS-CSA/CMVSS
- 1B1 CODES/STANDARDS USA

- 5 WIRE PASSES THROUGH FLOOR AT THIS POINT.
- 4 CONNECT TELEPHONE WIRE TO MATCHING COLORS ON PLATE-WALL,TELEPHONE.
3. SEE WIRING DIAGRAM-BODY,12V FOR ADDITIONAL INFORMATION.
2. ROUTE TANK SENSOR WIRES SO THEY DO NOT PASS OVER SENSORS. USE WIRE TIE MOUNT 155366-01-000 AND WIRE TIE 8343-01-000 AS NEEDED. TANK SURFACE MUST BE CLEANED USING ISOPROPYL ALCOHOL AND PRIMED WITH PRIMER 94.
1. ALL WIRES TO BE CLAMPED WITH CLAMP 10495-01-000 OR WIRE TIE 8343-02-000 EVERY 600MM UNLESS OTHERWISE SPECIFIED.

FOR ELECTRICAL TORQUE SPECIFICATIONS SEE DWG NO. 128783-01-000

FOR ELECTRICAL CALLOUTS SEE DWG NO. 121339-01-000

WINNEBAGO COPYRIGHT 2006 WINNEBAGO INDUSTRIES, INC.

DFTR	ORIG. DATE
CHKR	ALL DIMENSIONS ARE IN MILLIMETERS
P.E.	
M.E.	FIRST USED
DSNR	08 G35L

UNSPECIFIED TOLERANCES ARE: MATERIAL:

WHOLE DIM (X)	: 3
ONE-PLACE (X.X)	: 1.5
TWO-PLACE (X.XX)	: 0.50
ANGLE	: 1°

THIRD ANGLE PROJECTION

DO NOT SCALE DRAWING

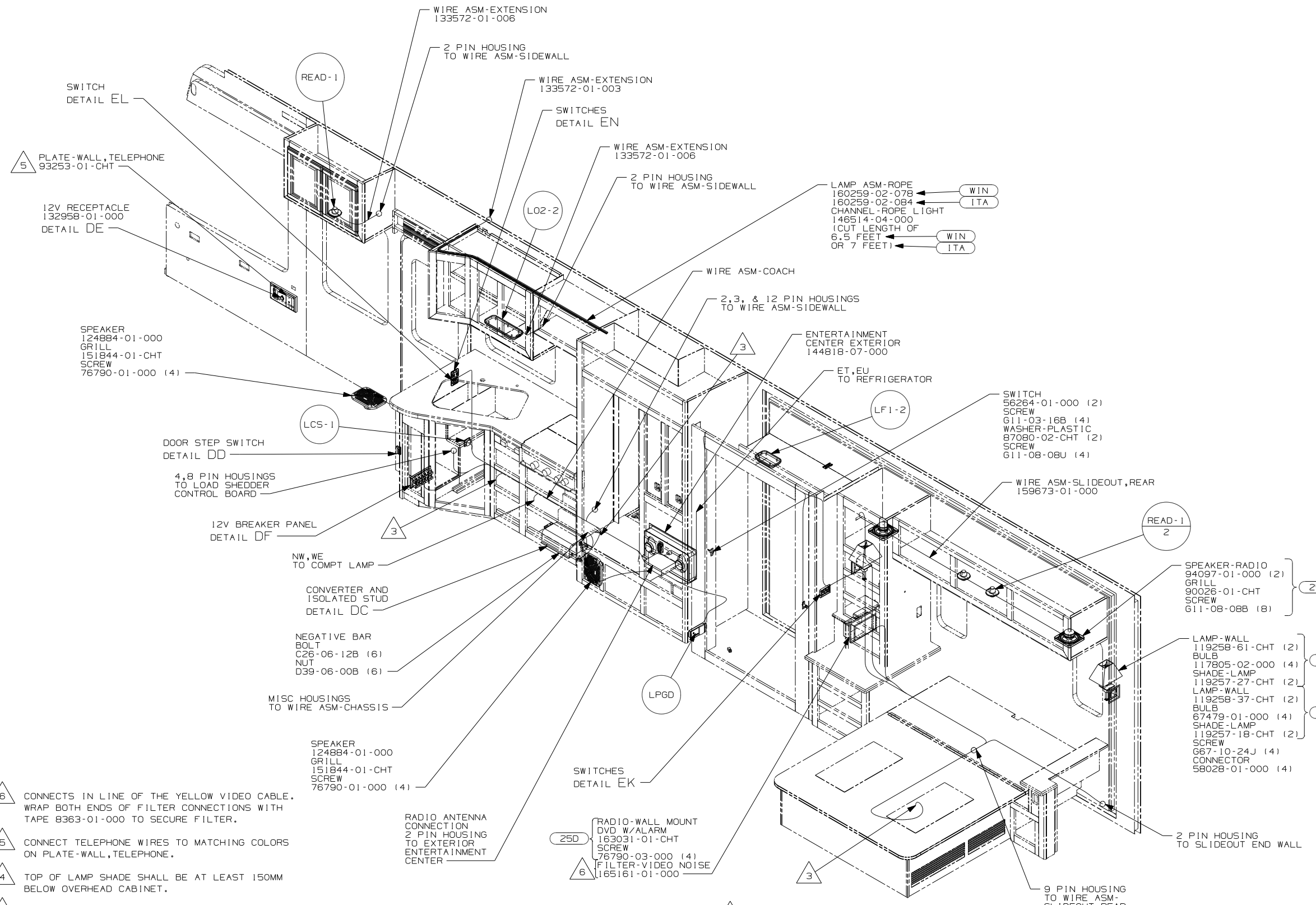
TITLE: WIRING INSTL-BODY,12V

SHEET 1 OF 7 PART NO 163176 REV

REF: 1 10/4/2007

DRAWING NO.	FEATURE
163176-01	(WIN)
163176-02	(ITA)

RELEASE	REV DATE	DWG NO
A		163176
REV ZONE	REVISION RECORD	DATE DFR-ORIG



- 6 CONNECTS IN LINE OF THE YELLOW VIDEO CABLE. WRAP BOTH ENDS OF FILTER CONNECTIONS WITH TAPE 8363-01-000 TO SECURE FILTER.
- 5 CONNECT TELEPHONE WIRES TO MATCHING COLORS ON PLATE-WALL, TELEPHONE.
- 4 TOP OF LAMP SHADE SHALL BE AT LEAST 150MM BELOW OVERHEAD CABINET.
- 3 WIRE PASSES THROUGH FLOOR AT THIS POINT.

- 2. SEE WIRING DIAGRAM-BODY, 12V FOR ADDITIONAL INFORMATION.
- 1. ALL WIRES TO BE CLAMPED WITH CLAMP 10495-01-000 OR WIRE TIE 8343-02-000 EVERY 600MM UNLESS OTHERWISE SPECIFIED.

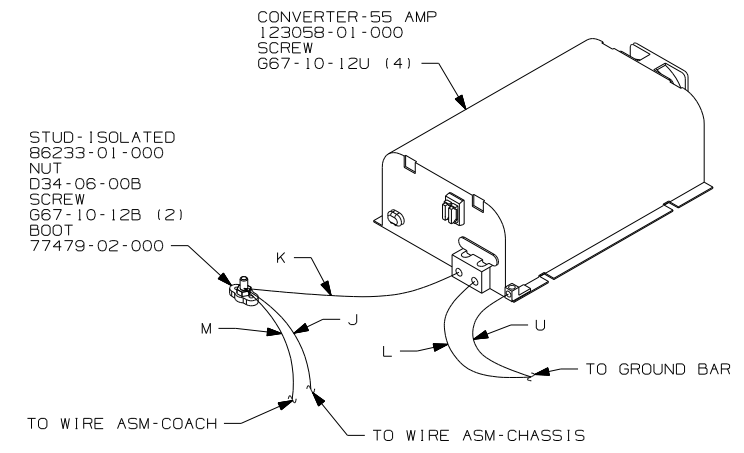
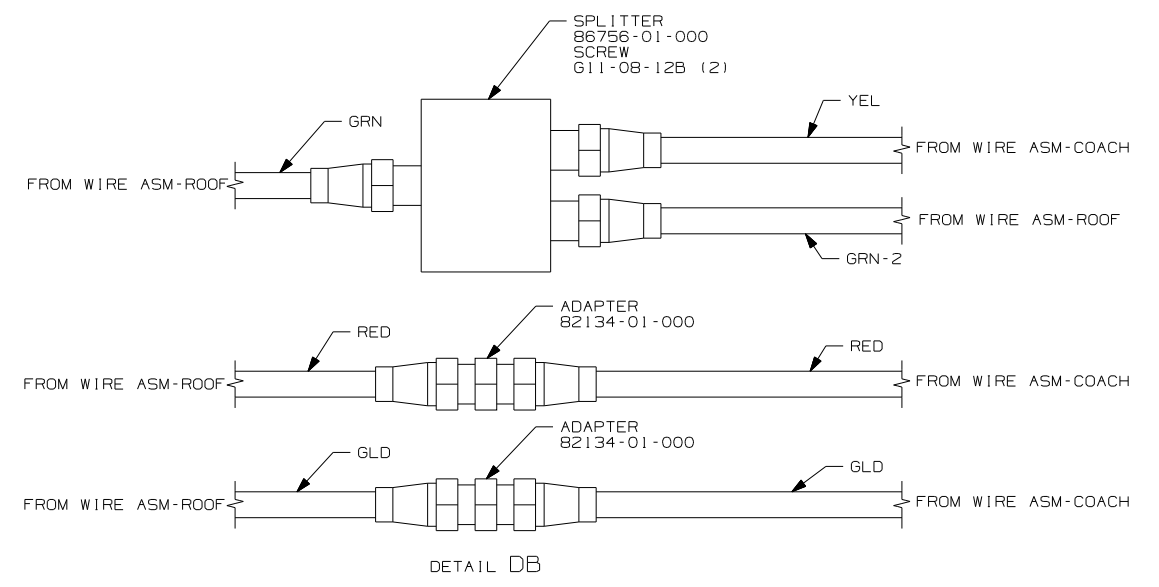
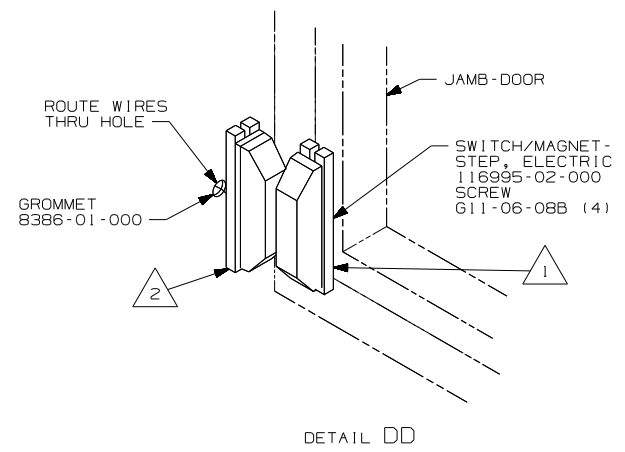
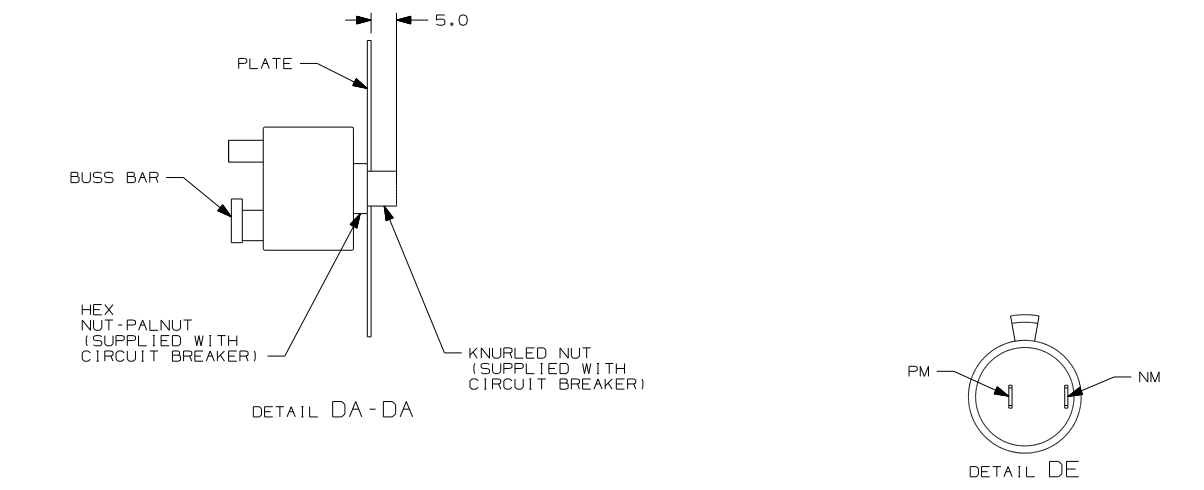
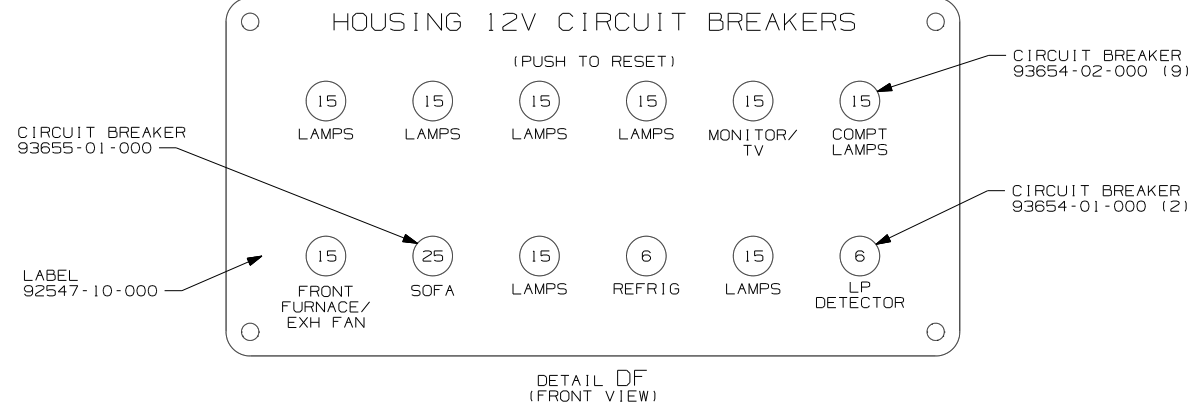
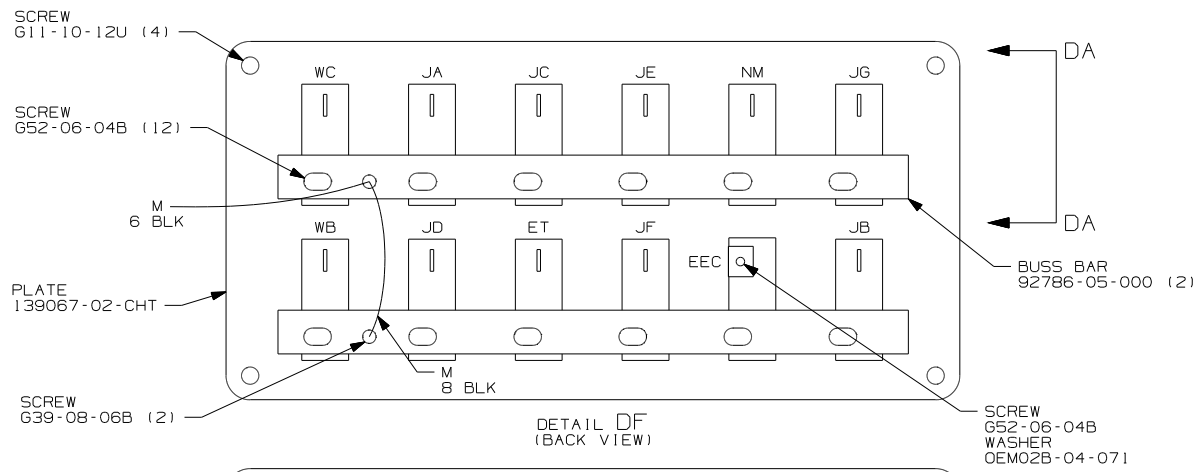
NOTES:

FOR ELECTRICAL TORQUE SPECIFICATIONS SEE DWG NO. 128783-01-000

X-X FOR ELECTRICAL CALLOUTS SEE DWG NO. 121339-01-000

- 25D STEREO SYSTEM/W/CD/DVD REAR
- 1TA ITASCA ONLY
- WIN WINNEBAGO ONLY
- 265 CODES/STANDARDS-CSA/CMVSS
- 1B1 CODES/STANDARDS USA

FIRST USED	
08 G35L	
DO NOT SCALE DRAWING	
TITLE: WIRING INSTL-BODY, 12V	
SHEET 3	PART NO 163176

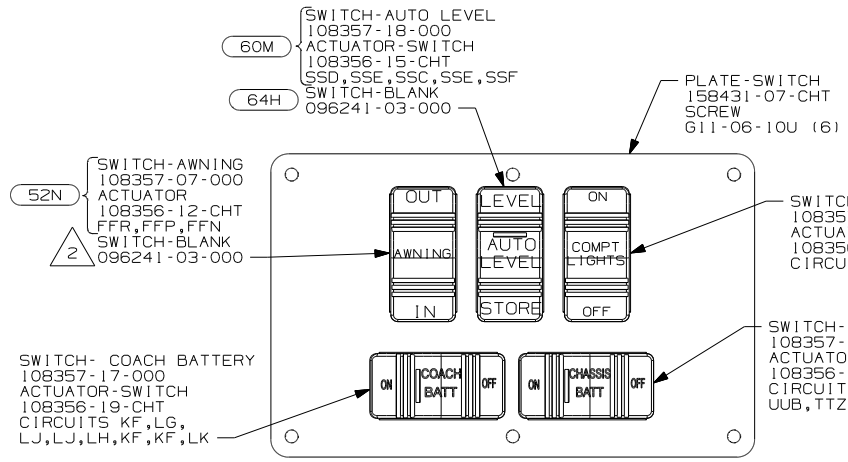


- NOTES:
- 3 FOR POSITIONING DIMENSIONS SEE WIRING INSTL-BODY, 110V.
 - 2 MOUNT SWITCH AND SPACER TO BLOCK ON JAMB ADJUST HEIGHT TO MATCH MAGNET.
 - 1 MOUNT MAGNET USING PILOT HOLES IN SCREEN DOOR FRAME. MOUNT WITH MAGNET TOWARD SWITCH.

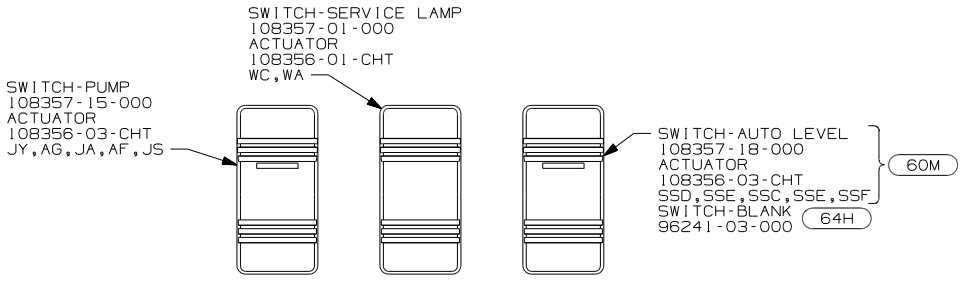
FOR ELECTRICAL TORQUE SPECIFICATIONS SEE DWG NO. 128783-01-000

FOR ELECTRICAL CALLOUTS SEE DWG NO. 121339-01-000

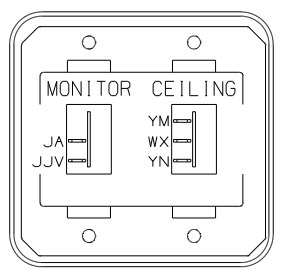
265	CODES/STANDARDS-CSA/CMVSS
1B1	CODES/STANDARDS USA
1B1	265
FIRST USED	08 G35L
TITLE:	DO NOT SCALE DRAWING
	WIRING INSTL-BODY, 12V
SHEET 4	PART NO 163176 REV



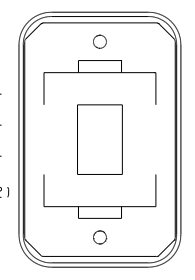
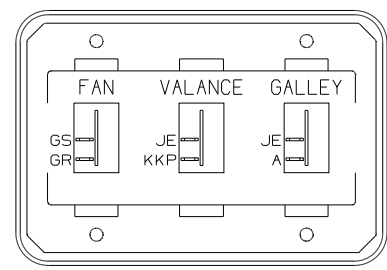
DETAIL EA



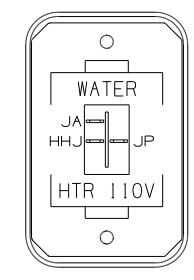
DETAIL EB



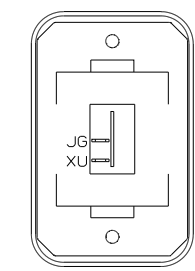
DETAIL EC



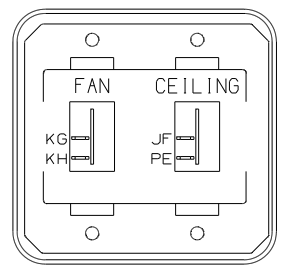
DETAIL ED



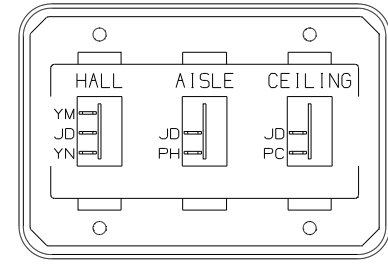
DETAIL ED OR



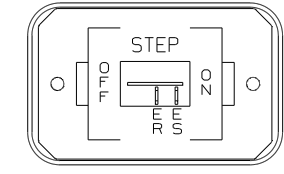
DETAIL EJ



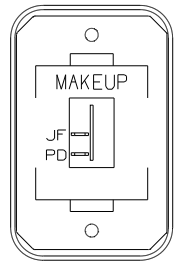
DETAIL EE



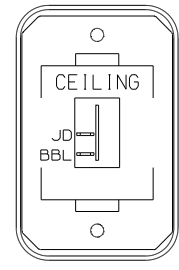
DETAIL EK



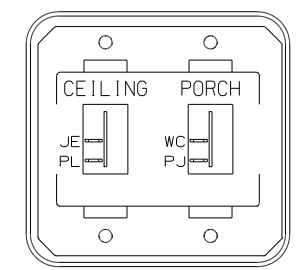
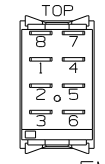
DETAIL EL



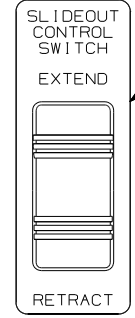
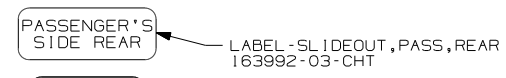
DETAIL EF



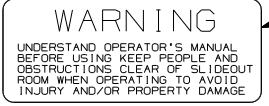
DETAIL EG



DETAIL EN



DETAIL EH



FOR ELECTRICAL TORQUE SPECIFICATIONS SEE DWG NO. 128783-01-000

FOR ELECTRICAL CALLOUTS SEE DWG NO. 121339-01-000

- HYDRAULIC LEVELING JACKS
- HYDRAULIC LEVEL JACKS-AUTO
- WTR HTR-10GAL/ELEC/LP/MTR/10D
- WTR HTR-6GAL/ELE/LP/MOTOR/10D
- AWNING - PATIO, ELECTRIC
- CODES/STANDARDS-CSA/CMVSS
- CODES/STANDARDS USA

FIRST USED	08 G35L
TITLE	DO NOT SCALE DRAWING
SHEET 5	WIRING INSTL-BODY, 12V
PART NO	163176
REV	

- WITHOUT OR
- FOR SWITCH ORIENTATION SEE DETAIL EM.
- WITHOUT

NOTES:
1. SWITCHES ARE TO BE INSTALLED AS SHOWN ON THIS DRAWING.

SPEAKER-ROUND, CEILING
160867-01-CHT (13)
SCREW
61208-12-170 (12)

FLUNS
3 48V

LIGHT-HALOGEN, ADJUSTABLE
146048-01-CHT
SCREW
611-06-10J (2)

LFSNZ
4

LF1-2
6 WASHER-PLASTIC
87080-02-CHT (6)
SCREW
611-08-08B (12)

LSH-3 48M

HAL
2

- NOTES:
- 4 LAMP LOCATED IN POWER CORD COMPARTMENT.
 - 3 LAMP LOCATED IN WATER HEATER COMPARTMENT.
 - 2 LAMP LOCATED IN SERVICE COMPARTMENT.
 - 1 LAMP LOCATED IN SLIDEOUT.

LAMP
86280-01-000
SCREW
667-10-12U (4)
CONNECTOR
58028-01-000 (2)
WASHER-PLASTIC
87080-02-CHT
SCREW
611-08-08U (2)

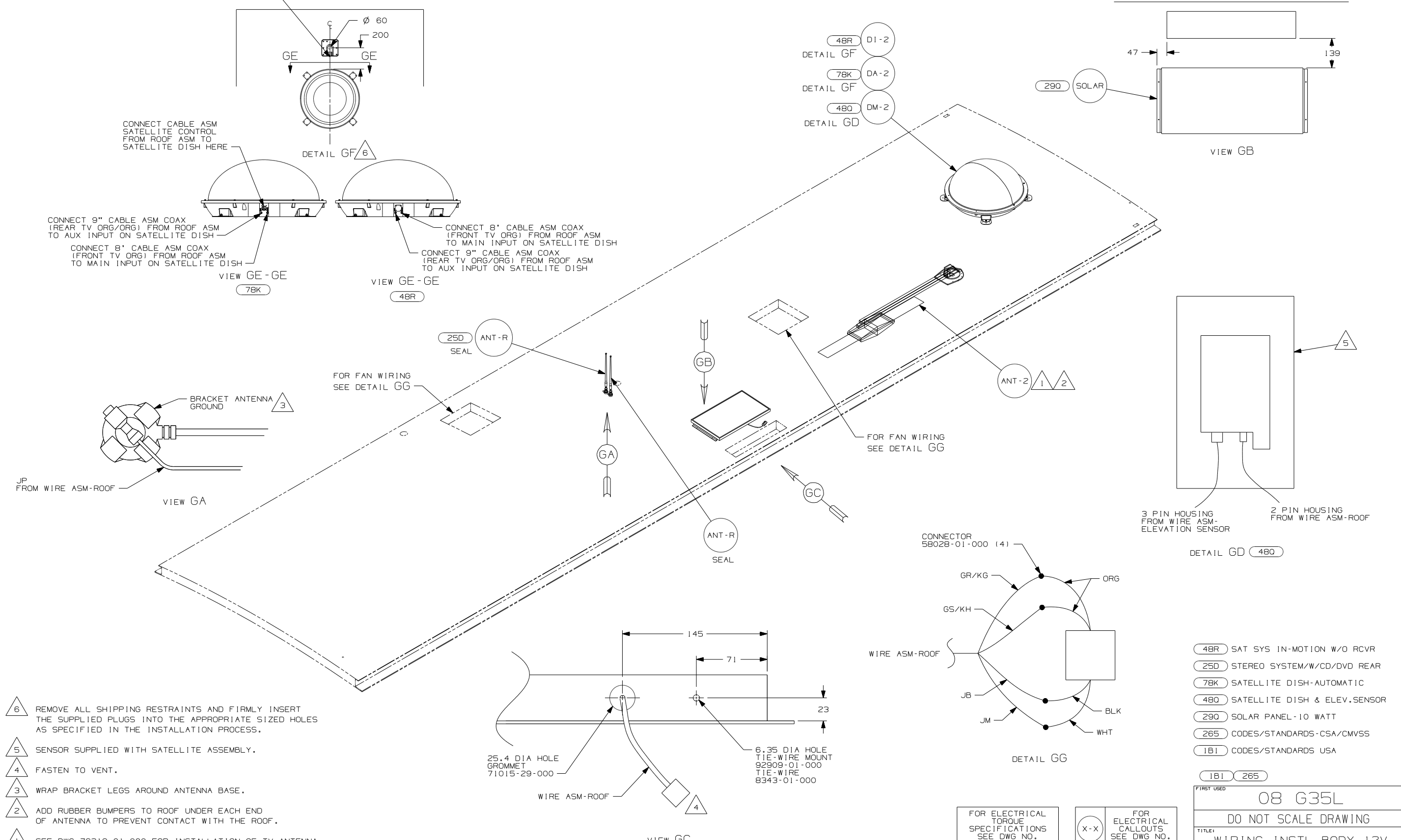
FOR ELECTRICAL
TORQUE
SPECIFICATIONS
SEE DWG NO.
128783-01-000

FOR ELECTRICAL
CALLOUTS
SEE DWG NO.
121339-01-000

- 48V LIGHTS-FLUORESCENT
- 48M LIGHTS-INCANDESCENT
- 265 CODES/STANDARDS-CSA/CMVSS
- 1B1 CODES/STANDARDS USA

FIRST USED	08 G35L	
DO NOT SCALE DRAWING		
TITLE:	WIRING INSTL-BODY, 12V	
SHEET 6	PART NO	163176
REV		

THE SATELLITE DISH WIRE CONNECTIONS ARE TO BE PLACED ON THE CENTERLINE OF THE MOTORHOME FACING FORWARD



- NOTES:
- 6 REMOVE ALL SHIPPING RESTRAINTS AND FIRMLY INSERT THE SUPPLIED PLUGS INTO THE APPROPRIATE SIZED HOLES AS SPECIFIED IN THE INSTALLATION PROCESS.
 - 5 SENSOR SUPPLIED WITH SATELLITE ASSEMBLY.
 - 4 FASTEN TO VENT.
 - 3 WRAP BRACKET LEGS AROUND ANTENNA BASE.
 - 2 ADD RUBBER BUMPERS TO ROOF UNDER EACH END OF ANTENNA TO PREVENT CONTACT WITH THE ROOF.
 - 1 SEE DWG 76319-01-000 FOR INSTALLATION OF TV ANTENNA.

- 48R DI-2
DETAIL GF
- 78K DA-2
DETAIL GF
- 48Q DM-2
DETAIL GD

- 48R SAT SYS IN-MOTION W/O RCVR
- 25D STEREO SYSTEM/W/CD/DVD REAR
- 78K SATELLITE DISH-AUTOMATIC
- 48Q SATELLITE DISH & ELEV.SENSOR
- 290 SOLAR PANEL-10 WATT
- 265 CODES/STANDARDS-CSA/CMVSS
- 1B1 CODES/STANDARDS USA

FOR ELECTRICAL TORQUE SPECIFICATIONS SEE DWG NO. 128783-01-000

FOR ELECTRICAL CALLOUTS SEE DWG NO. 121339-01-000

FIRST USED		08 G35L	
DO NOT SCALE DRAWING			
TITLE: WIRING INSTL-BODY, 12V			
SHEET 7	PART NO	163176	REV