



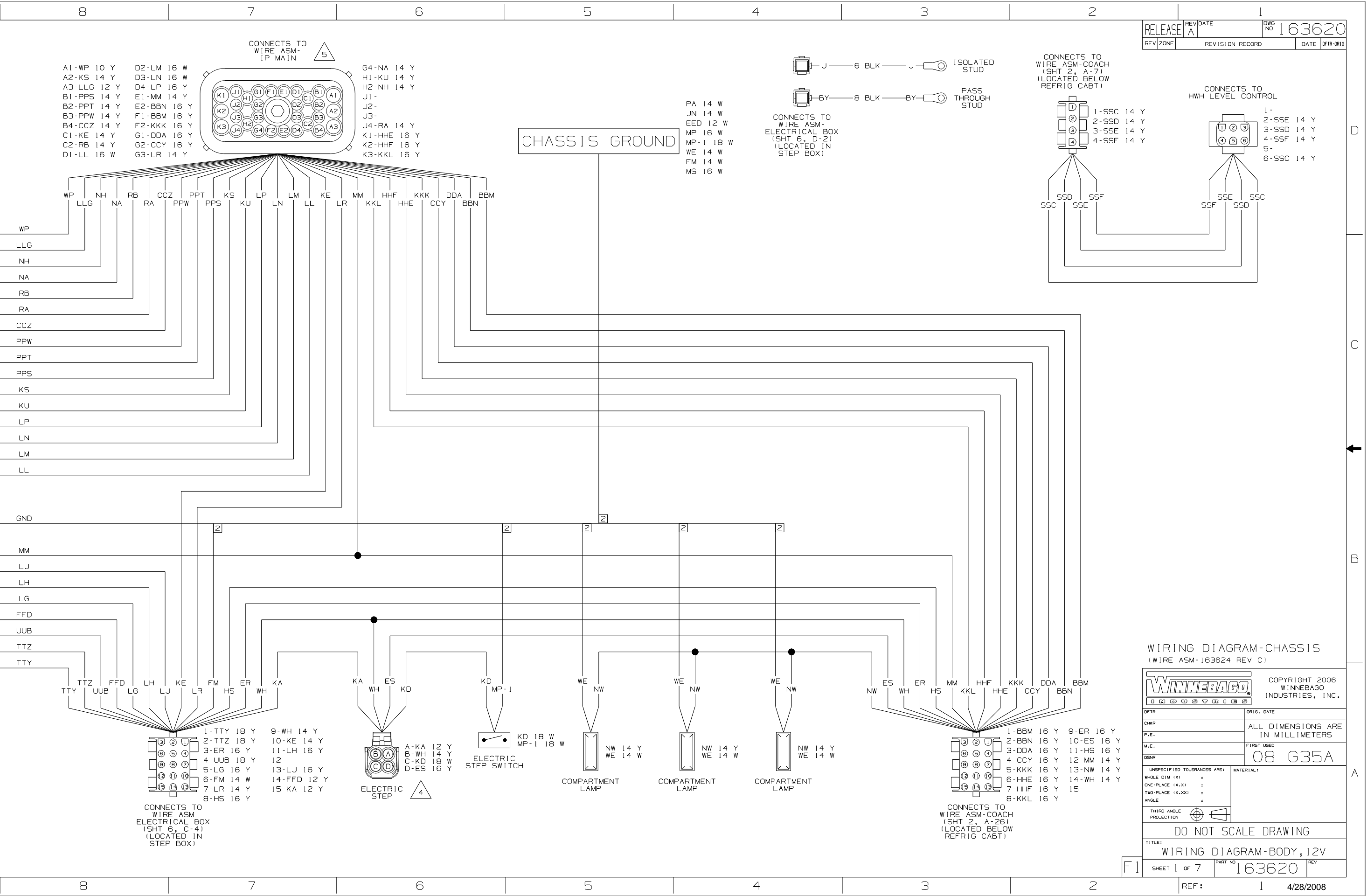
DANGER

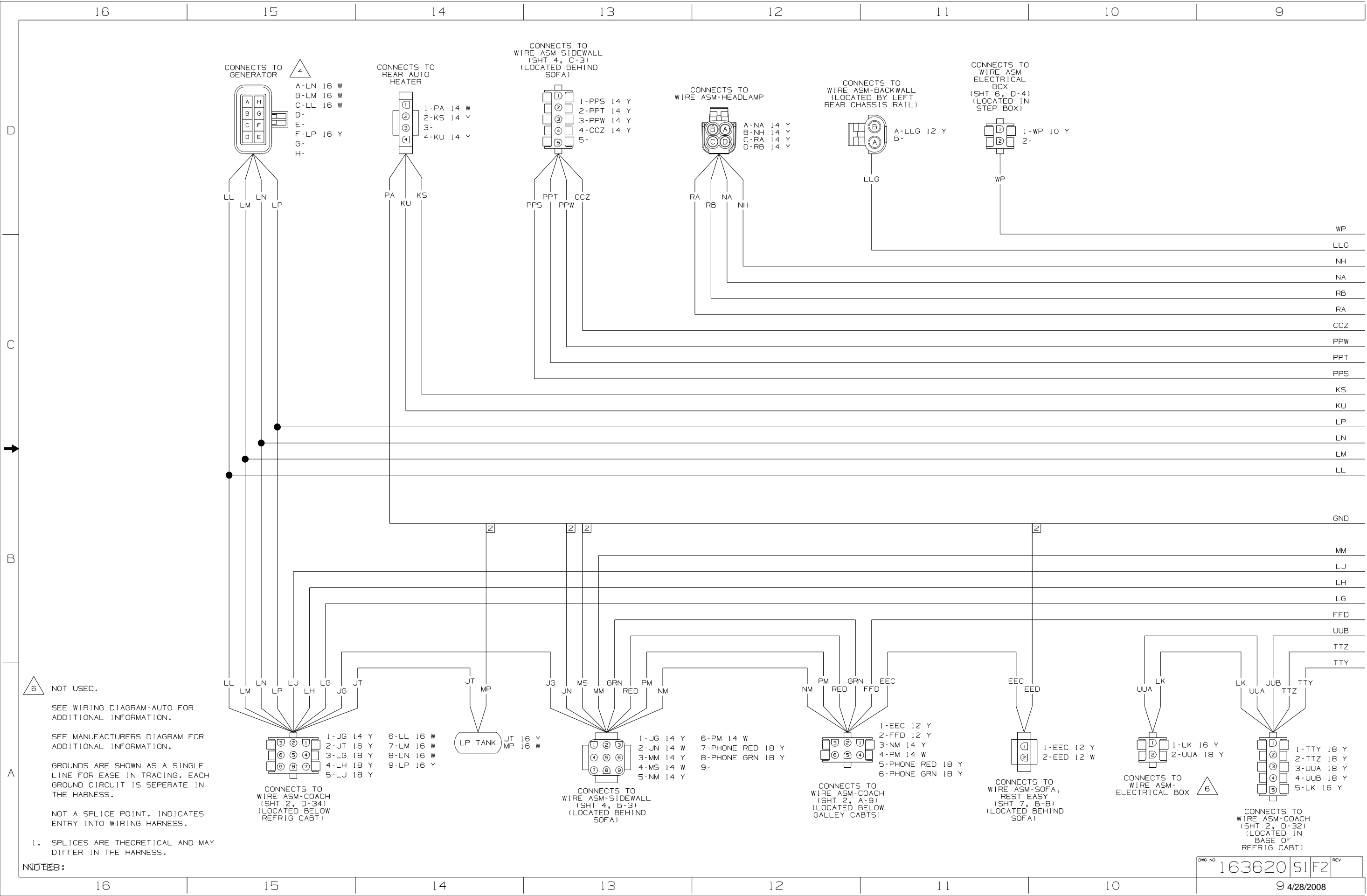
Danger of electrical shock, burns or death. Always remove all power sources before attempting any repair, service or diagnostic work. Power can be present from shore power, generator, inverter or battery. All power sources must be disabled and secured before performing any service.

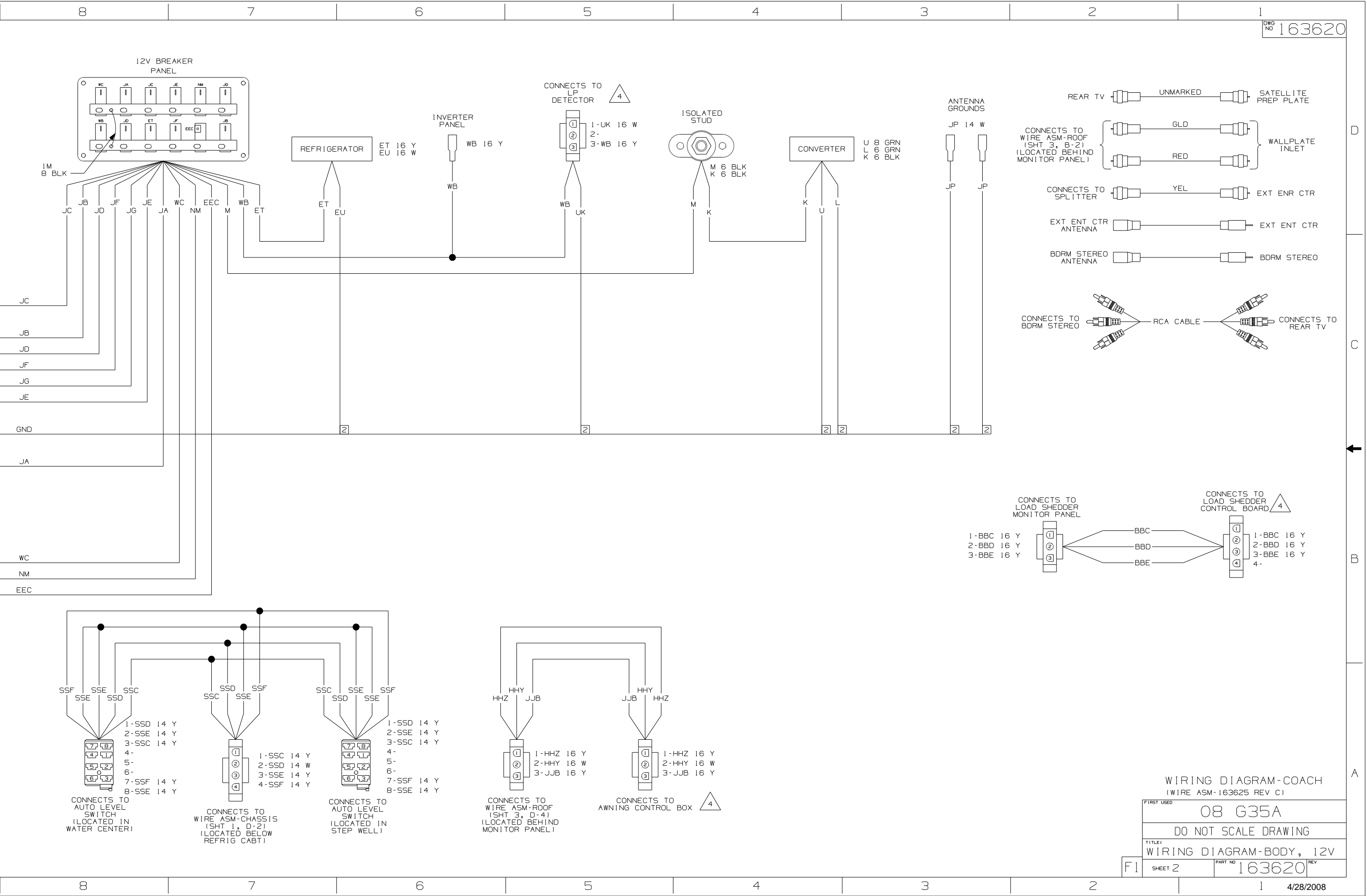


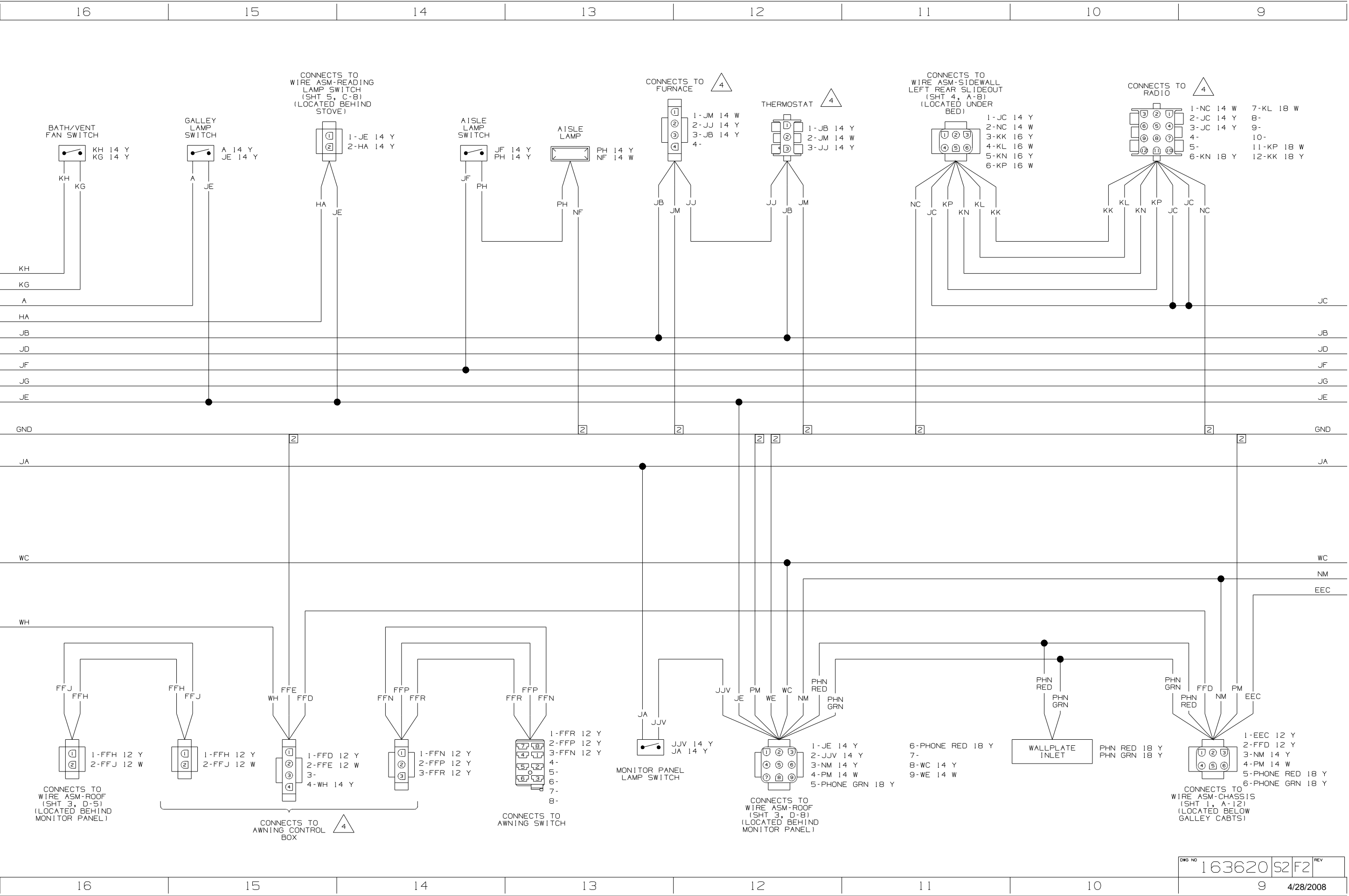
CAUTION

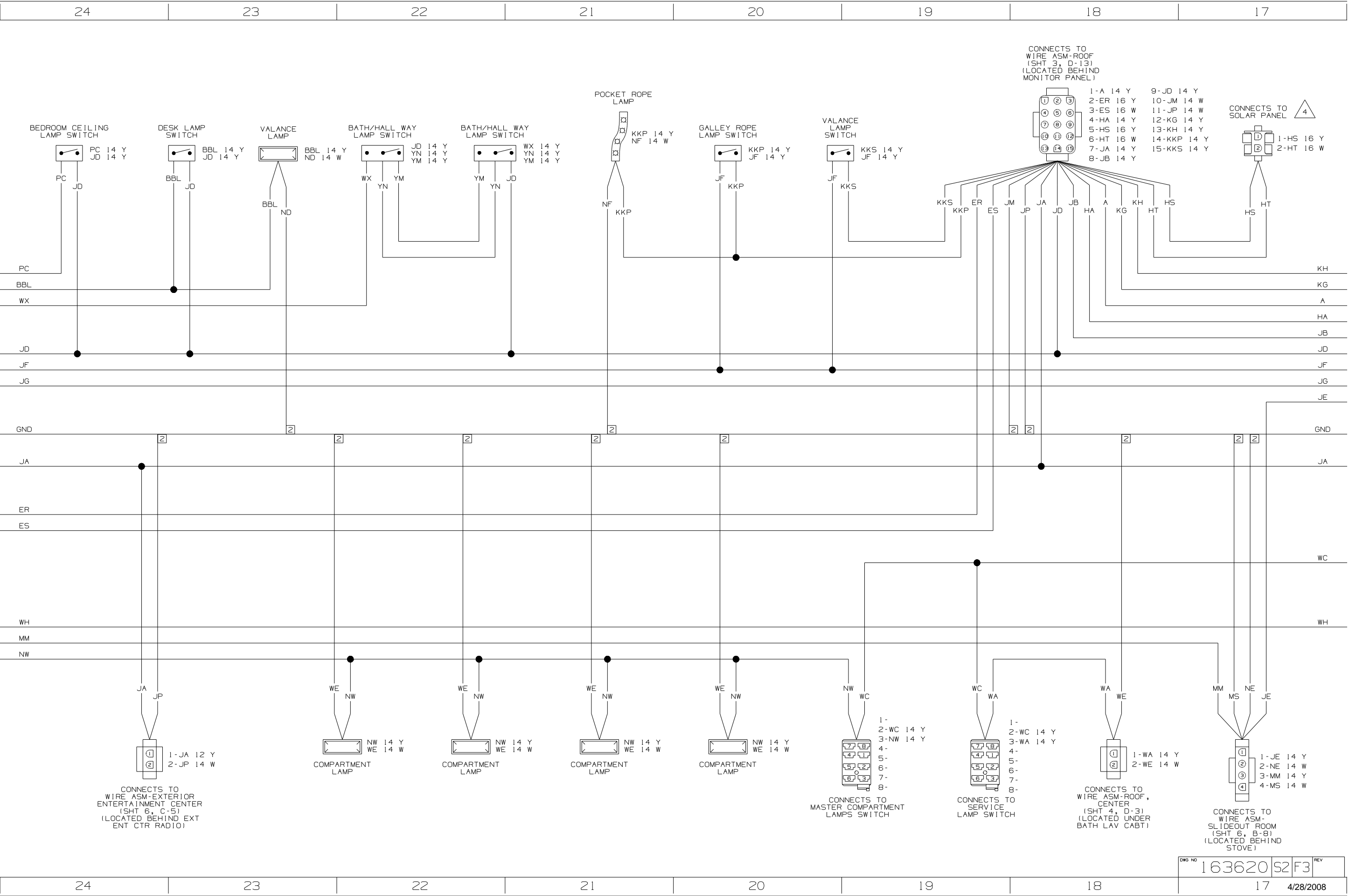
If you lack the skills, tools or equipment to perform diagnostic or repair work leave such work to an authorized Winnebago Industries dealer or other qualified shop.

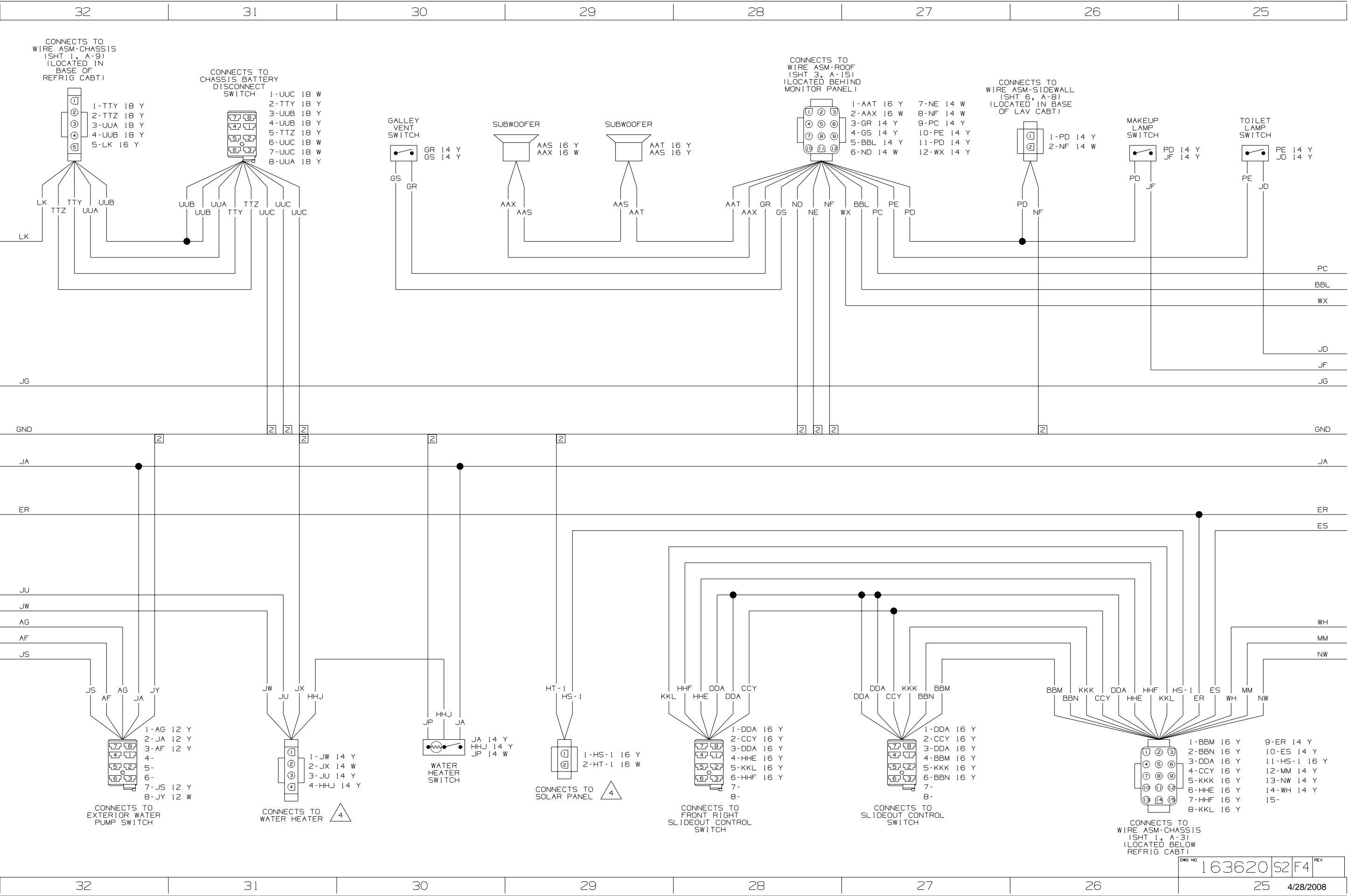


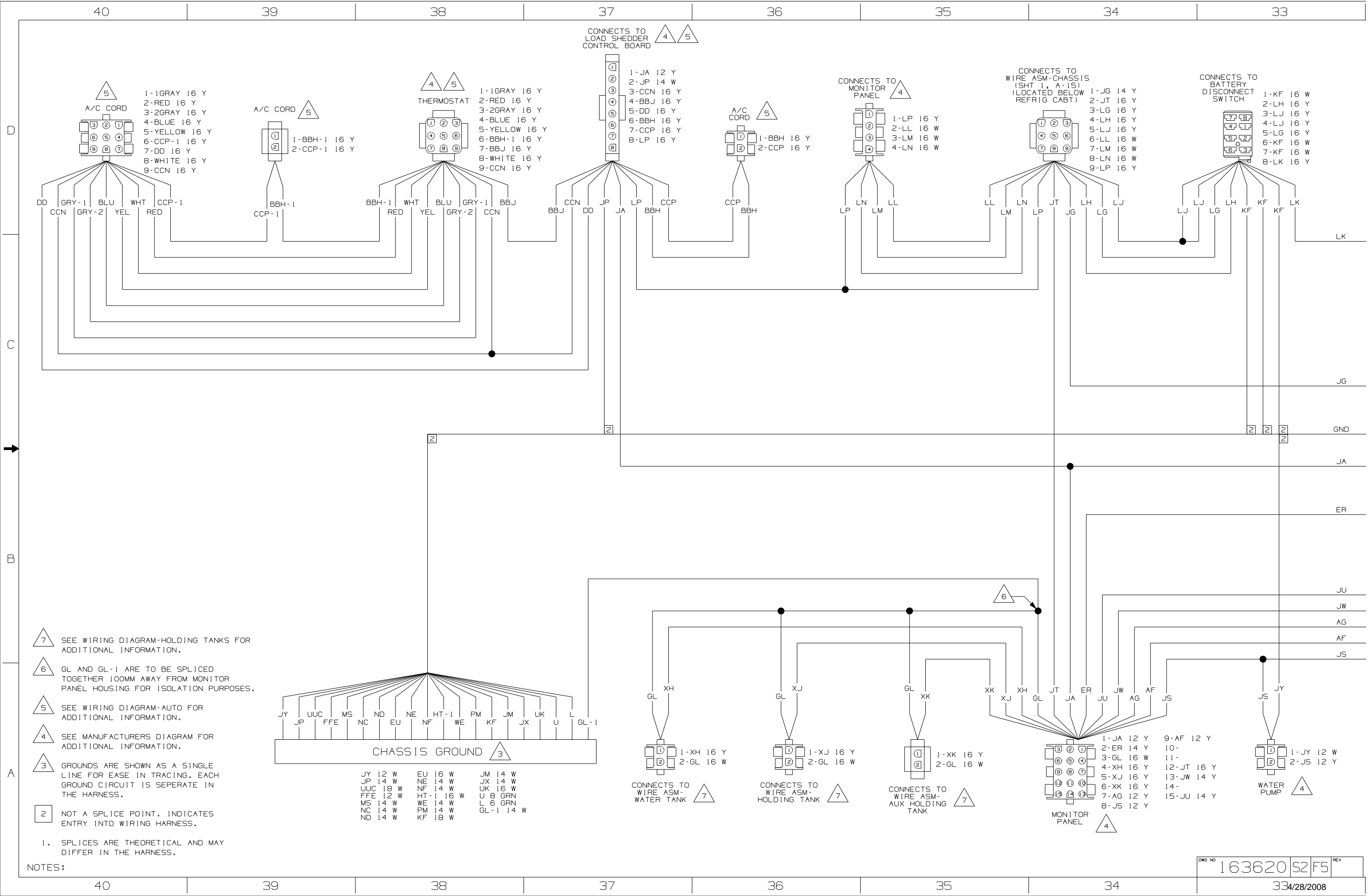


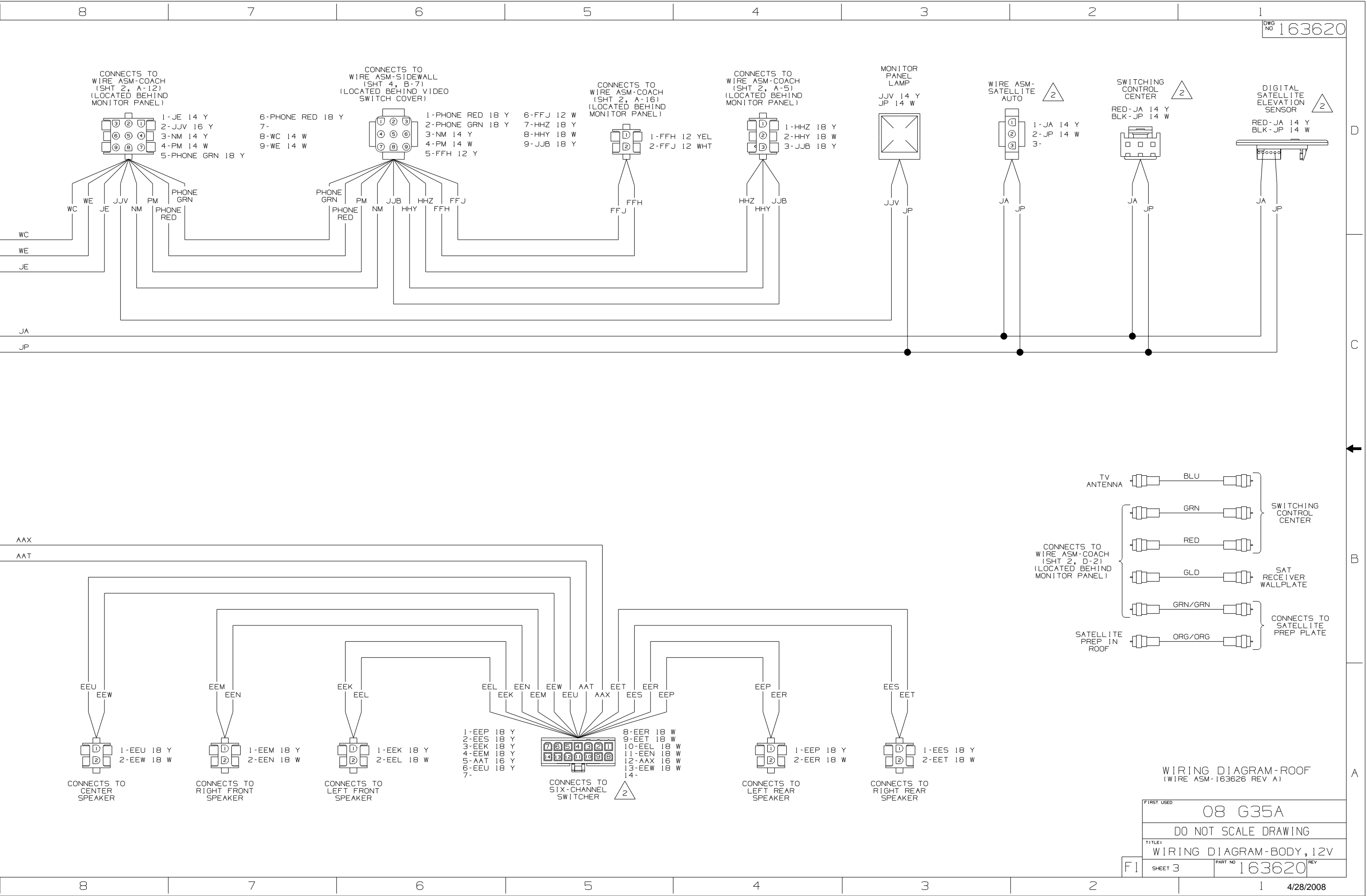


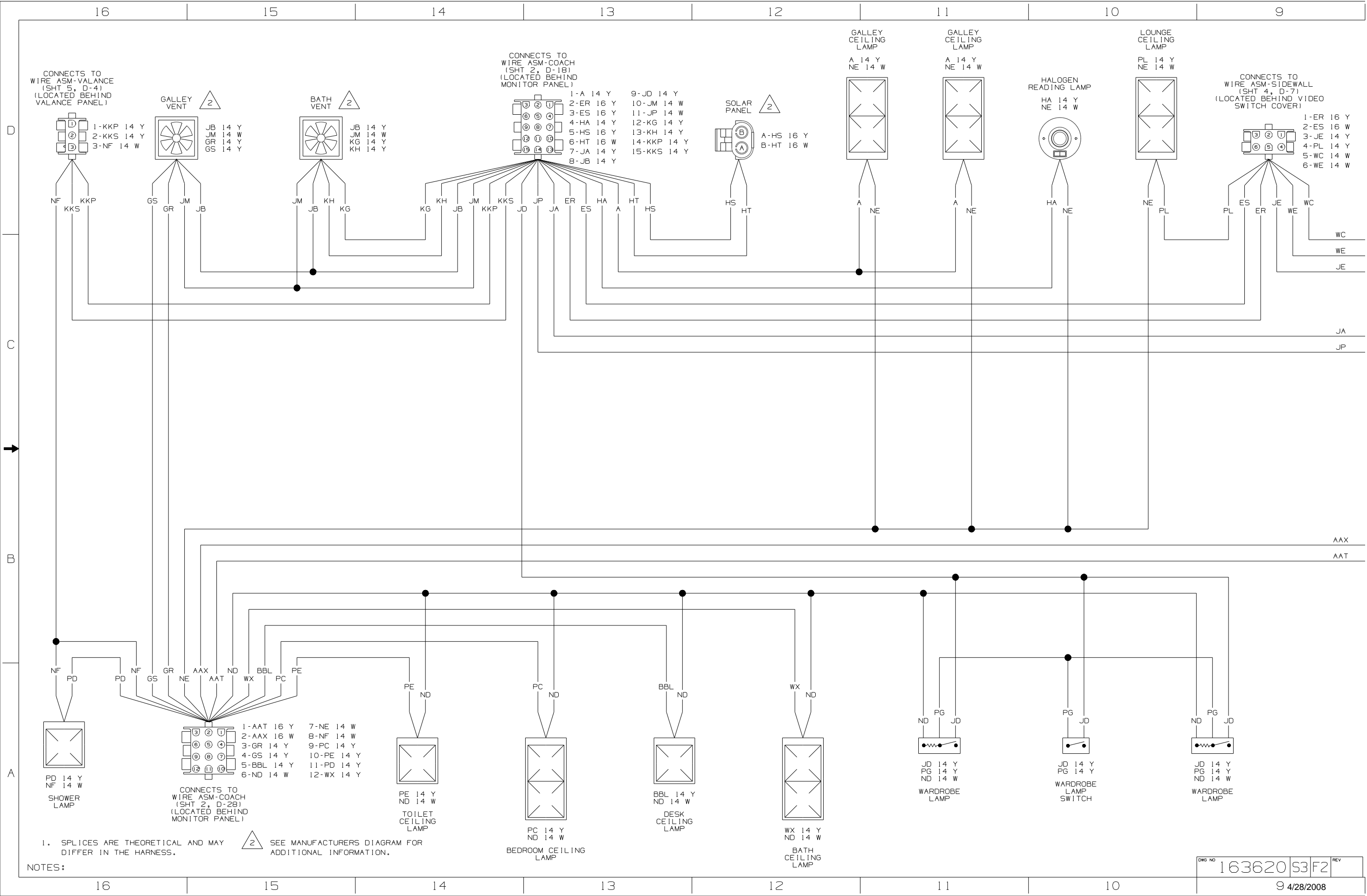


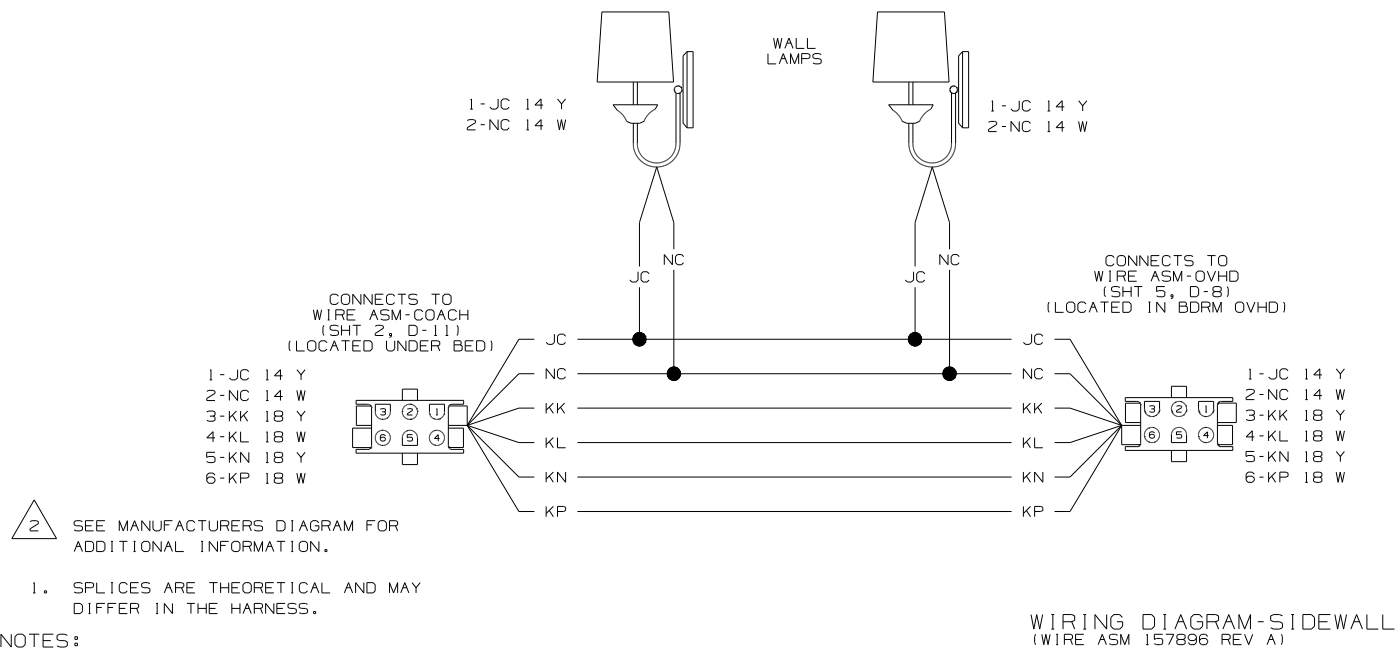
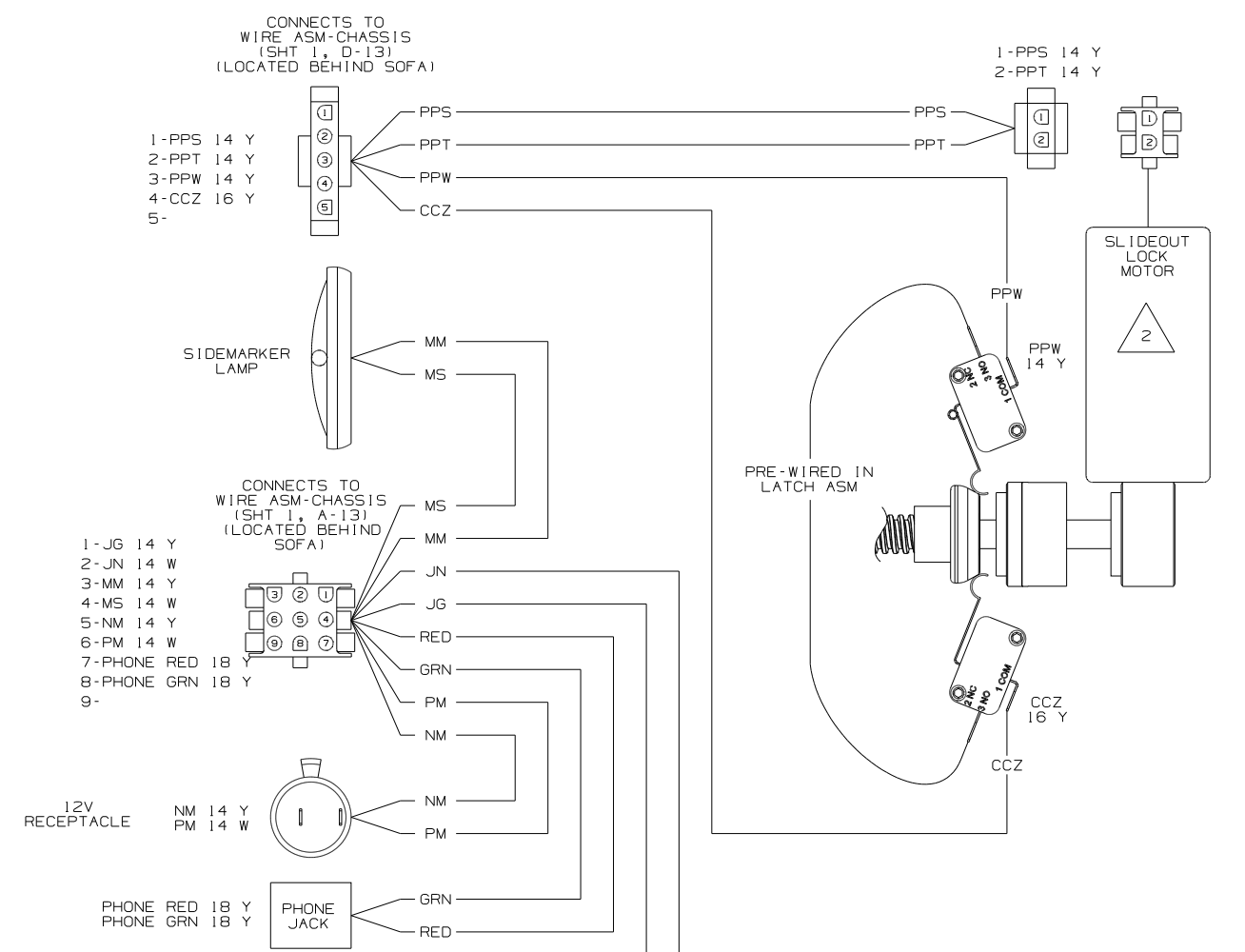
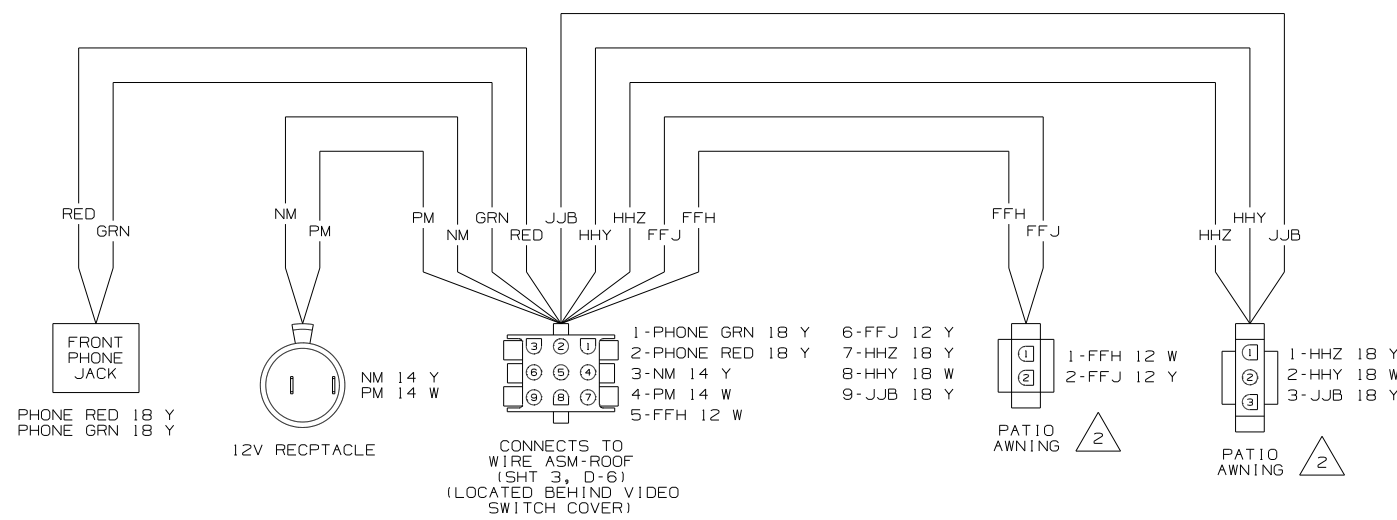
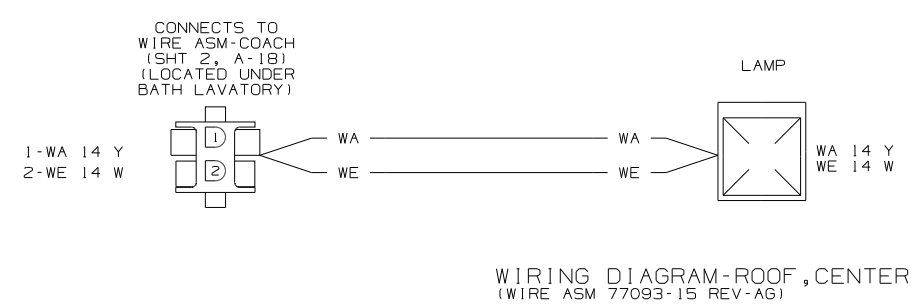
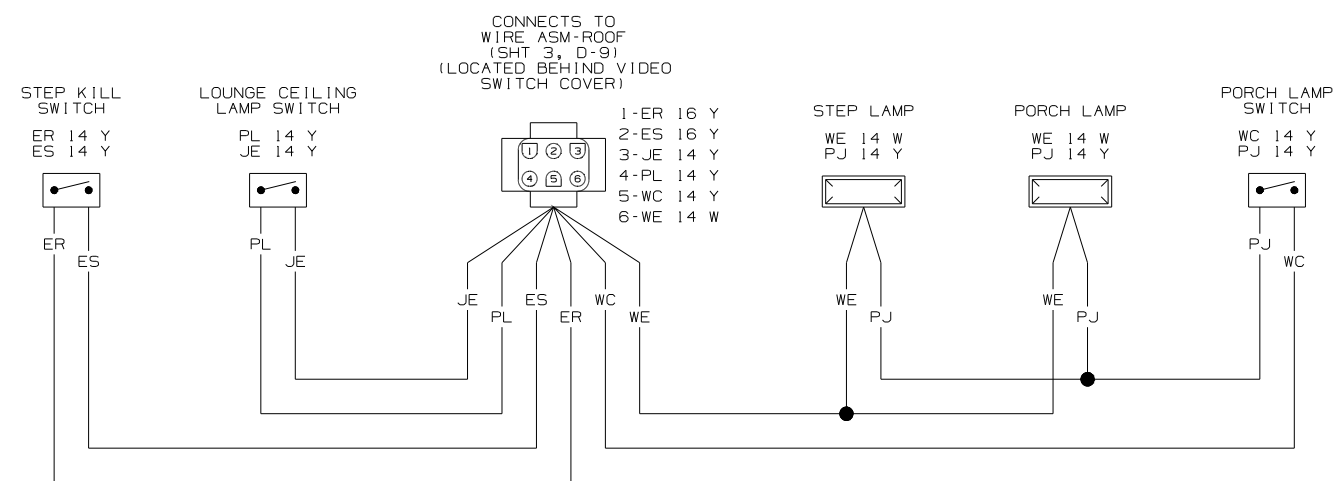








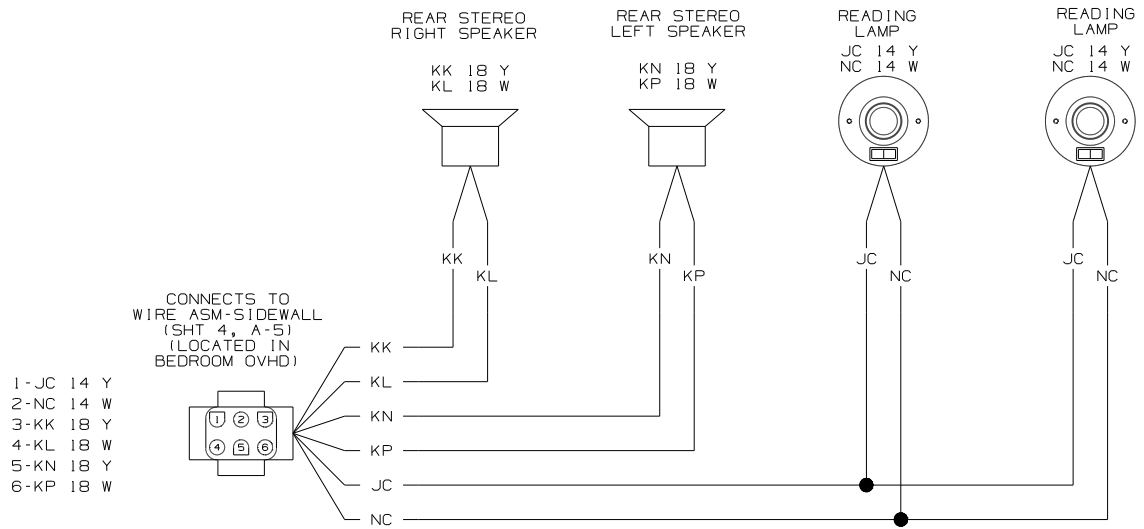




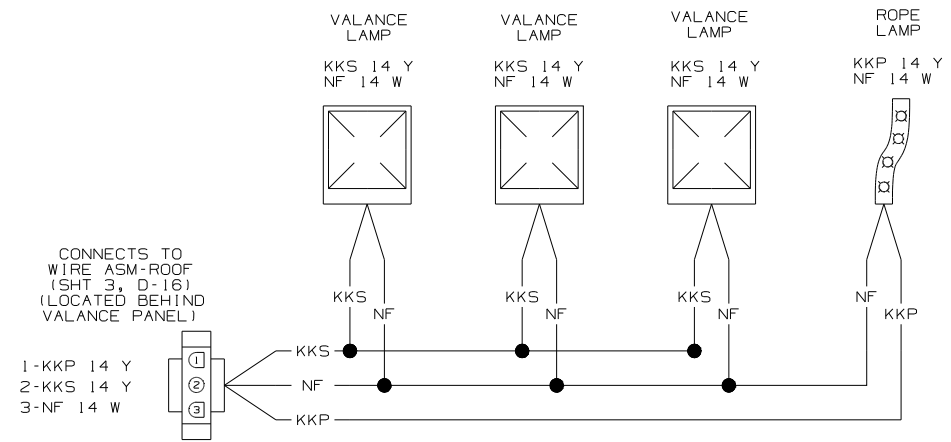
2 SEE MANUFACTURERS DIAGRAM FOR ADDITIONAL INFORMATION.

1. SPLICES ARE THEORETICAL AND MAY DIFFER IN THE HARNESS.

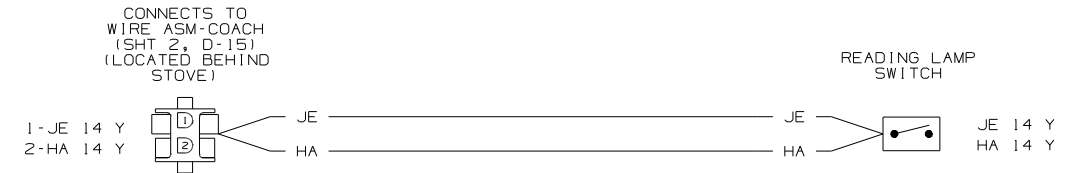
NOTES:



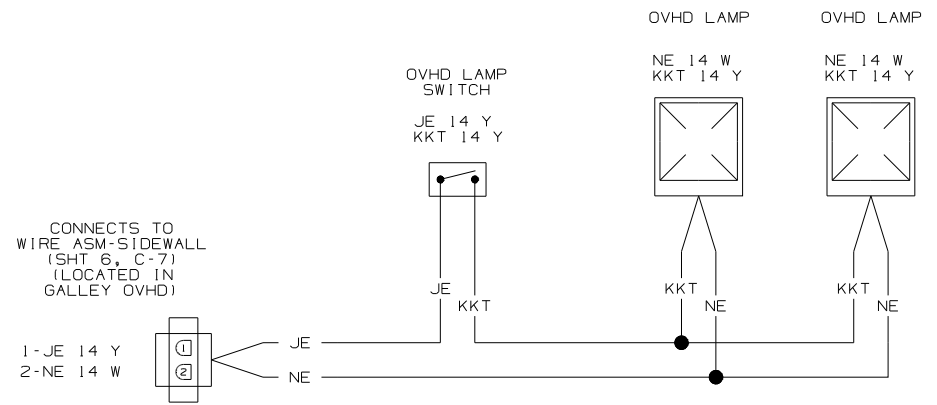
WIRING DIAGRAM-OVHD
(WIRE ASM-157942 REV-A)



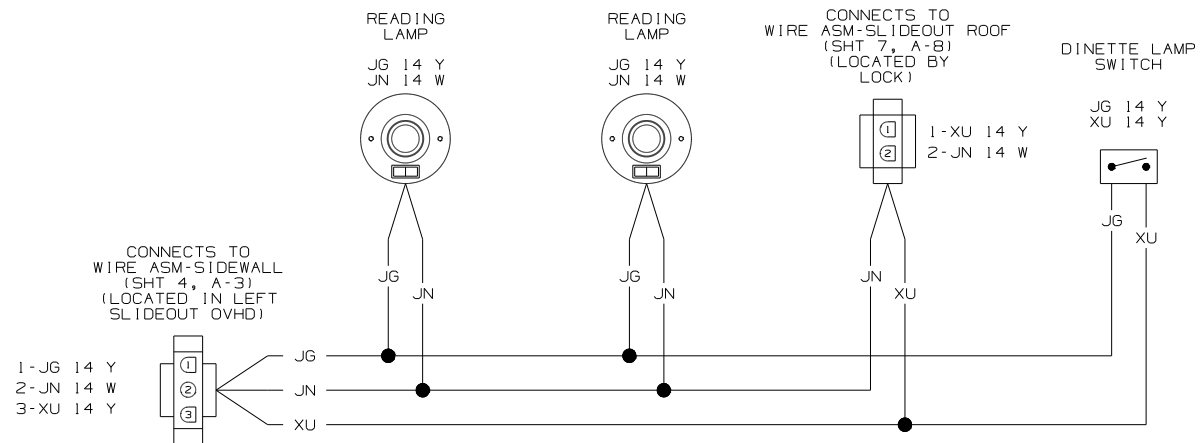
WIRING DIAGRAM-VALANCE
(WIRE ASM-150814 REV-A)



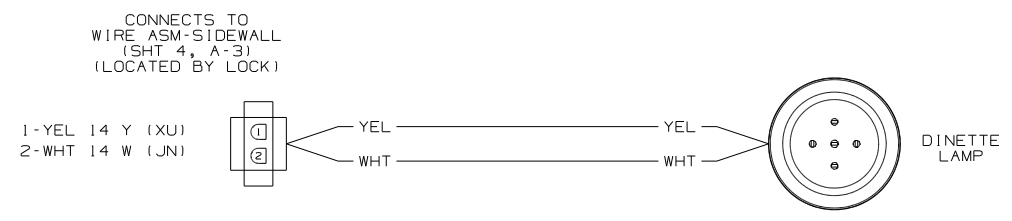
WIRING DIAGRAM-READING LAMP SWITCH
(WIRE ASM-150865 REV-B)



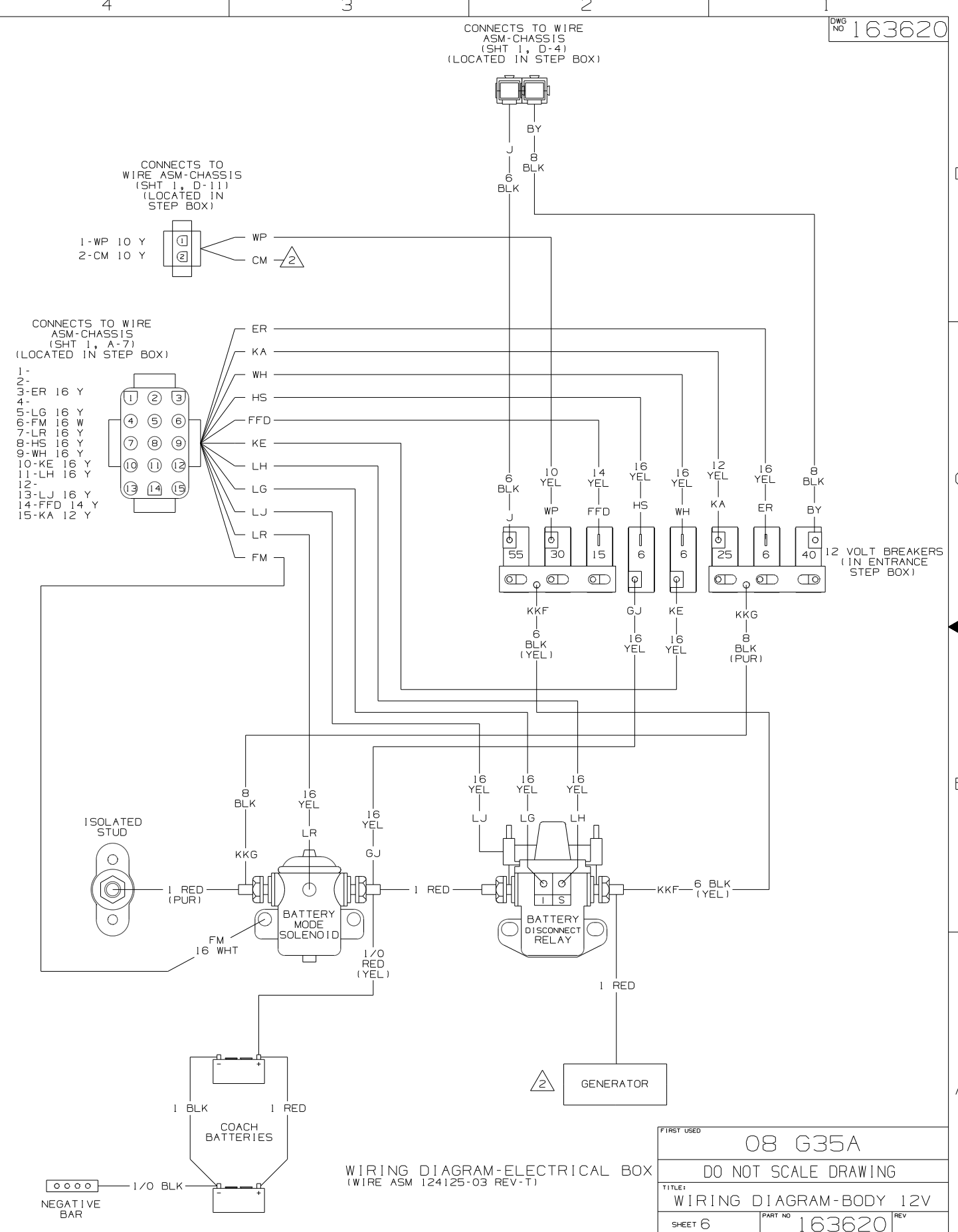
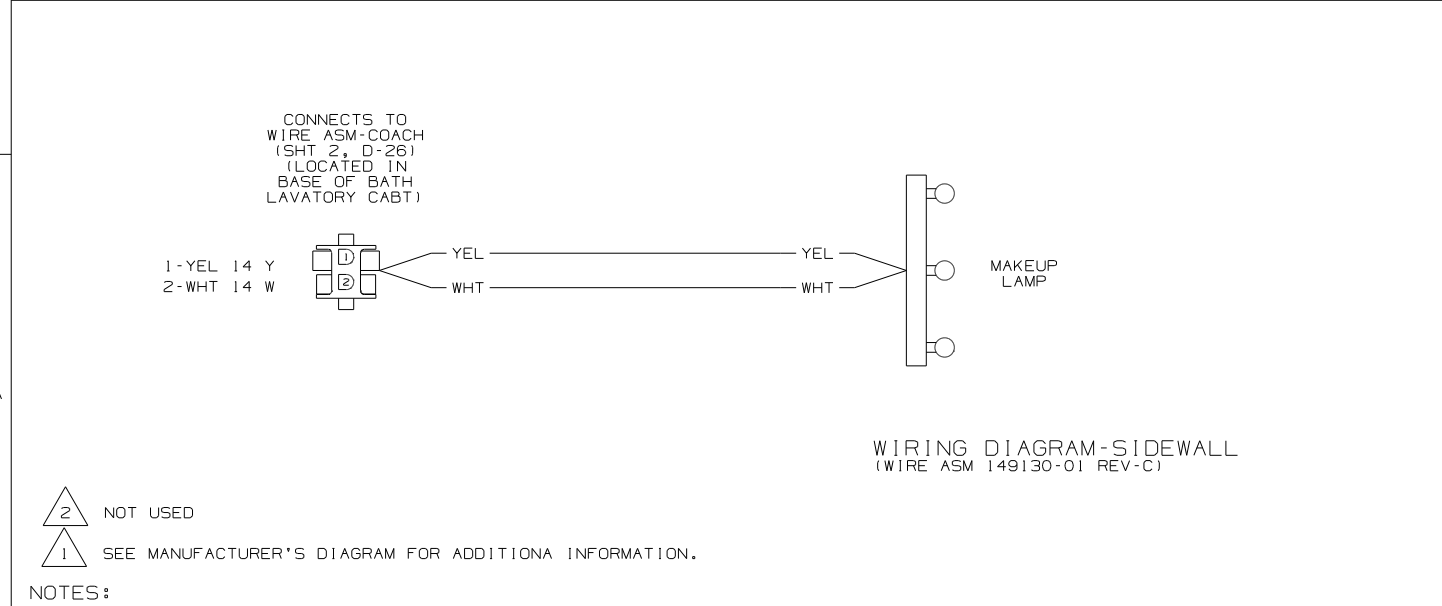
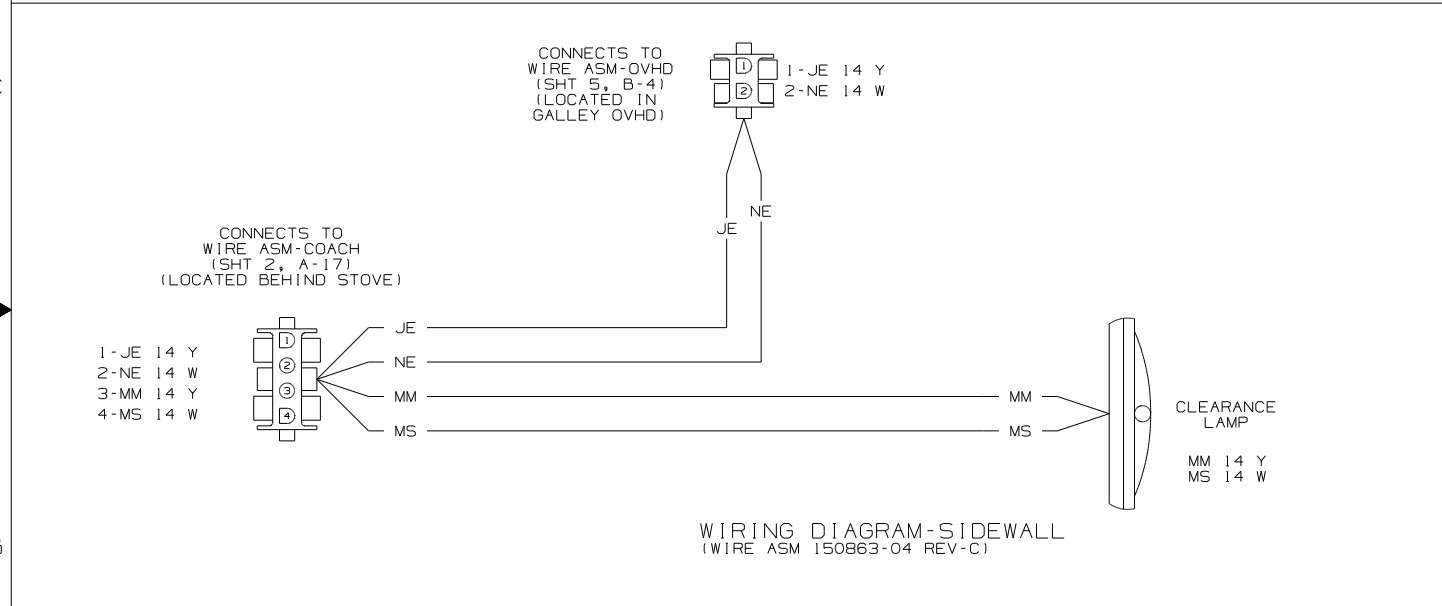
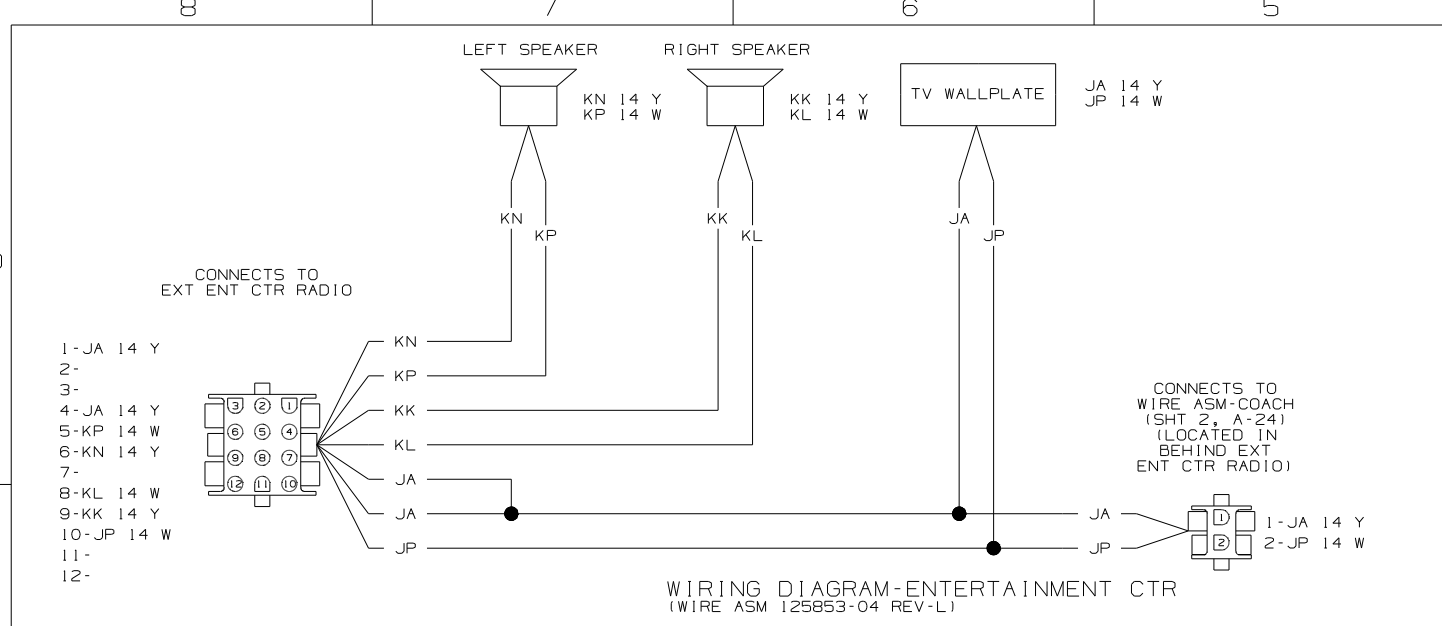
WIRING DIAGRAM-OVHD,SLIDEOUT
(WIRE ASM-150864 REV-A)



WIRING DIAGRAM-OVHD
(WIRE ASM-153451 REV-A)



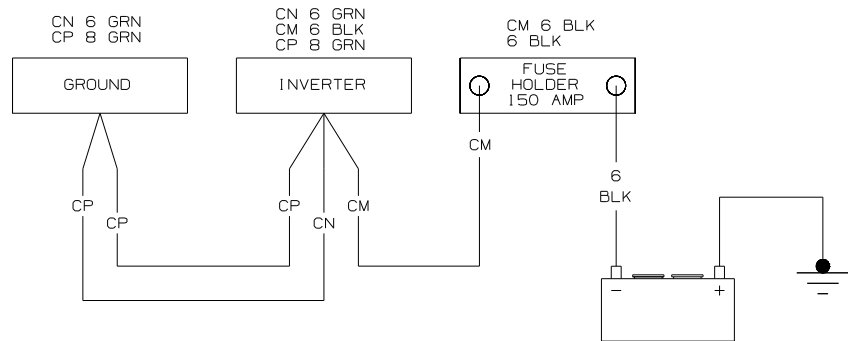
WIRING DIAGRAM-OVHD,SLIDEOUT
(WIRE ASM-133572 REV-G)



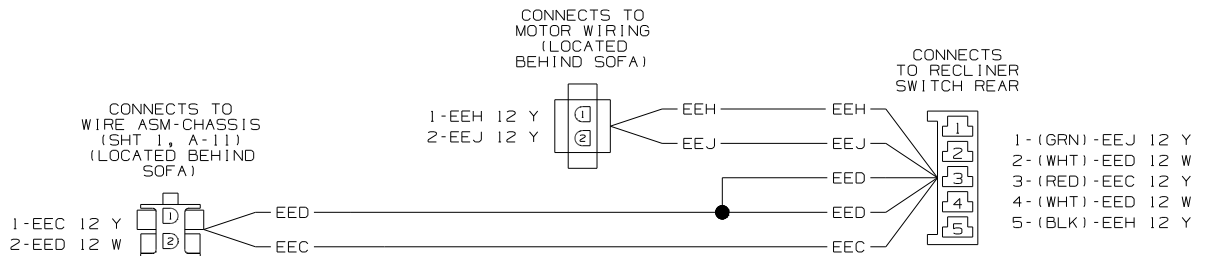
NOTES:

2 NOT USED

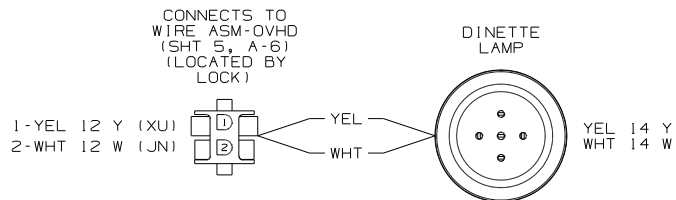
1 SEE MANUFACTURER'S DIAGRAM FOR ADDITIONA INFORMATION.



WIRING DIAGRAM- INVERTER
(WIRE ASM 154845 REV C)



WIRING DIAGRAM-SOFA,REST EASY
(WIRE ASM 136028 REV-B)



WIRING DIAGRAM-EXTENSION, 2 PIN
(WIRE ASM 149130 REV-D)