



DANGER

Danger of electrical shock, burns or death. Always remove all power sources before attempting any repair, service or diagnostic work. Power can be present from shore power, generator, inverter or battery. All power sources must be disabled and secured before performing any service.



CAUTION

If you lack the skills, tools or equipment to perform diagnostic or repair work leave such work to an authorized Winnebago Industries dealer or other qualified shop.

	8	7	6	5	4	3	2	1
		G33V	G35A	G35L	G37B	G38J	G38T	
BLK	14-UL	136131-06-032	136131-06-055	136131-06-032	136131-06-036	136131-06-043	136131-06-015	
	14-CA	136134-06-032	136134-06-055	136134-06-032	136134-06-036	136134-06-043	136134-06-015	
BLU	14-UL	136131-02-070	136131-02-180	136131-02-080	136131-02-086	136131-02-135	136131-02-080	
	14-CA	136134-02-070	136134-02-180	136134-02-080	136134-02-086	136134-02-135	136134-02-080	
BRN	14-UL	136131-03-095	136131-03-070	136131-03-103	136131-03-120	136131-03-045	136131-03-200	
	14-CA	136134-03-095	136134-03-070	136134-03-103	136134-03-120	136134-03-045	136134-03-200	
GLD	12-UL	N/A	136135-10-063	136135-10-095	136135-10-085	136135-10-068	136135-10-047	(21M) (54E)
	12-CA	N/A	136136-10-063	136136-10-095	136136-10-085	136136-10-068	136136-10-047	(21M) (54E)
GRN	12-UL	136135-08-114	136135-08-090	136135-08-114	136135-08-118	136135-08-095	136135-08-110	(78J)
	12-CA	136136-08-114	136136-08-090	136136-08-114	136136-08-118	136136-08-095	136136-08-110	(78J)
PUR	14-UL	136131-04-200	136131-04-175	136131-04-130	136131-04-140	136131-04-150	136131-04-090	
	14-CA	136134-04-200	136134-04-175	136134-04-130	136134-04-140	136134-04-150	136134-04-090	
RED	12-UL	136135-07-114	136135-07-090	136135-07-114	136135-07-118	136135-07-095	136135-07-110	
	12-CA	136136-07-114	136136-07-090	136136-07-114	136136-07-118	136136-07-095	136136-07-110	
WHT	12-UL	136135-09-075	136135-09-050	136135-09-065	136135-09-100	136135-09-040	136135-09-075	
	12-CA	136136-09-075	136136-09-050	136136-09-065	136136-09-100	136136-09-040	136136-09-075	
YEL	14-UL	136131-05-032	136131-05-050	136131-05-032	136131-05-036	136131-05-055	136131-05-025	
	14-CA	136134-05-032	136134-05-050	136134-05-032	136134-05-036	136134-05-055	136134-05-025	
YEL 2	14-UL	136131-13-043	136131-13-055	136131-13-043	136131-13-050	136131-13-055	136131-13-050	
	14-CA	136134-13-043	136134-13-055	136134-13-043	136134-13-050	136134-13-055	136134-13-050	
GRY	14-UL	N/A	N/A	N/A	N/A	N/A	136131-15-080	(14C)
	14-CA	N/A	N/A	N/A	N/A	N/A	136134-15-080	(14C)
MAIN	6-3 UL	136139-01-095	136139-01-067	136139-01-090	136139-01-112	136139-01-060	136139-01-089	(78J)
	6-3 CA	136140-01-095	136140-01-067	136140-01-090	136140-01-112	136140-01-060	136140-01-089	(78J)
MAIN GROUND		136145-01-030	136145-01-045	136145-01-030	136145-01-036	136145-01-045	136145-01-012	
ATS GROUND		136145-01-061	136145-01-048	136145-01-064	136145-01-080	136145-01-061	136145-01-081	
CONDUIT ASM-CENTRAL A/C		151704-01-015	151704-01-015	151704-01-015	151704-01-015	151704-01-015	151704-01-015	

RELEASE REV DATE A
 REV ZONE REVISION RECORD DATE DFR-016
 DWG NO 161816

- (21M) (54E)
- (21M) (54E)
- (78J)
- (78J)
- (14C)
- (14C)
- (78J)
- (78J)

- (78J) ELECTRICAL SYSTEM-50 AMP
- (54E) WASHER/DRYER
- (21M) WASHER/DRYER PREP
- (14C) FIREPLACE-ELECTRIC
- (265) CODES/STANDARDS-CSA/CMVSS
- (1B1) CODES/STANDARDS USA
- (1B1) (265)

WINNEBAGO COPYRIGHT 2006 WINNEBAGO INDUSTRIES, INC.

DFTR	ORIG. DATE
CHKR	ALL DIMENSIONS ARE IN MILLIMETERS
P.E.	
M.E.	FIRST USED
DSNR	08 G-SERIES
UNSPECIFIED TOLERANCES ARE:	
WHOLE DIM (X)	: 3
ONE-PLACE (X.X)	: 1.5
TWO-PLACE (X.XX)	: 0.50
ANGLE	: 1°
THIRD ANGLE PROJECTION	
DO NOT SCALE DRAWING	
TITLE: LOAD CENTER/ATS ASM	
SHEET 1 of 4	PART NO 161816 REV
REF:	1 10/31/2007

SEE DETAIL DA
 NOTES:

FOR ELECTRICAL TORQUE SPECIFICATIONS SEE DWG NO. 128783-01-000

FOR ELECTRICAL CALLOUTS SEE DWG NO. 121339-01-000

	8	7	6	5	4	3	2	1
		G33V	G35A	G35L	G37B	G38J	G38T	
D	THROW IN WIRE #1	14-UL 136131-03-070	136131-03-055	136131-03-068	136131-03-055	136131-03-055	136131-13-010	
	14-CA	136134-03-070	136134-03-055	136134-03-068	136134-03-055	136134-03-055	136134-13-010	
D	THROW IN WIRE #2	14-UL 136131-04-018 (49M)	136131-04-018 (49M)	136131-12-085	136131-04-018 (49M)	136131-04-018 (49M)	136131-03-060	
	14-CA	136134-04-018 (49M)	136134-04-018 (49M)	136134-12-085	136134-04-018 (49M)	136134-04-018 (49M)	136134-03-060	
D	THROW IN WIRE #3	14-UL 136131-12-100	136131-02-026	136131-12-006 (40D)	136131-12-165	136131-03-013	136131-12-165	
	14-CA	136134-12-100	136134-02-026	136134-12-006 (40D)	136134-12-165	136134-03-013	136134-12-165	
D	THROW IN WIRE #4	14-UL 136131-12-006 (40D)	136131-02-026	136131-04-075	136131-12-015	136131-12-030	136131-04-130	
	14-CA	136134-12-006 (40D)	136134-02-026	136134-04-075	136134-12-015	136134-12-030	136134-04-130	
D	THROW IN WIRE #5	14-UL N/A	136131-12-075	N/A	136131-03-125	136131-03-075	136131-12-055	
	14-CA	N/A	136134-12-075	N/A	136134-03-125	136134-03-075	136134-12-055	
D	THROW IN WIRE #6	14-UL N/A	136131-12-006 (40D)	N/A	136131-12-006 (40D)	136131-12-165	136131-15-035 (14C)	
	14-CA	N/A	136134-12-006 (40D)	N/A	136134-12-006 (40D)	136134-12-165	136134-15-035 (14C)	
C	THROW IN WIRE #7	14-UL N/A	N/A	N/A	N/A	136131-12-006 (40D)	136131-12-006 (40D)	
	14-CA	N/A	N/A	N/A	N/A	136134-12-006 (40D)	136134-12-006 (40D)	
C	THROW IN FRONT TV	14-UL 136131-12-006	136131-12-006	136131-12-006	N/A	N/A	N/A	
	14-CA	136134-12-006	136134-12-006	136134-12-006	N/A	N/A	N/A	
B	SLIDEOUT WIRE #1	136151-03-028	136151-03-028	136151-03-028	136151-03-028	136151-03-040	136151-05-028	
B	SLIDEOUT WIRE #2	136151-04-017	136151-04-017	136151-04-017	136151-04-017	136151-04-017	136151-03-028	
B	SLIDEOUT WIRE #3	N/A	136151-06-022	N/A	136151-12-019	136151-06-040	136151-04-017	
B	SLIDEOUT WIRE #4	N/A	136151-02-022	N/A	N/A	136151-12-025	136151-12-017	
B	SLIDEOUT WIRE #5	N/A	N/A	N/A	N/A	136151-03-025	136151-15-017	

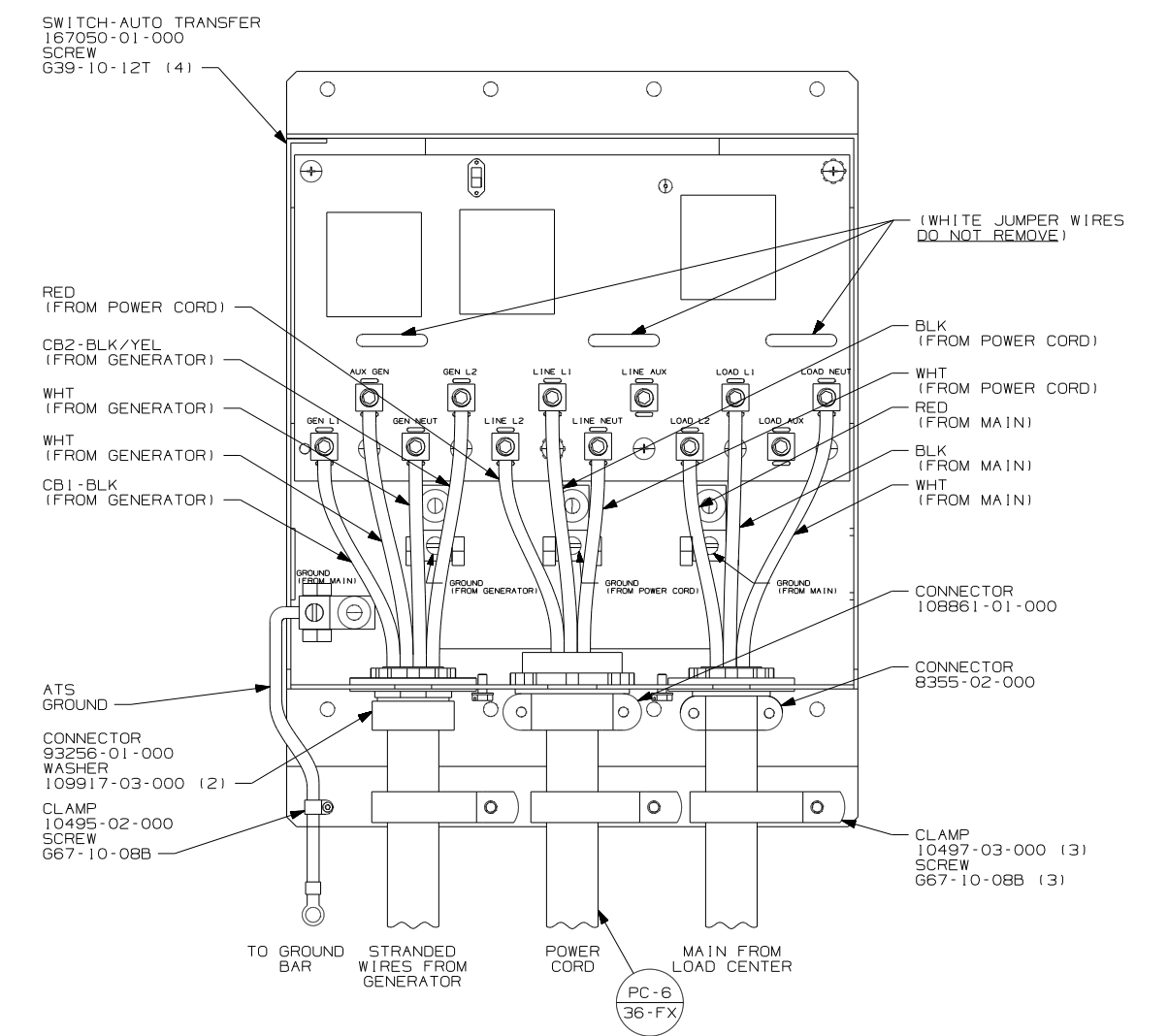
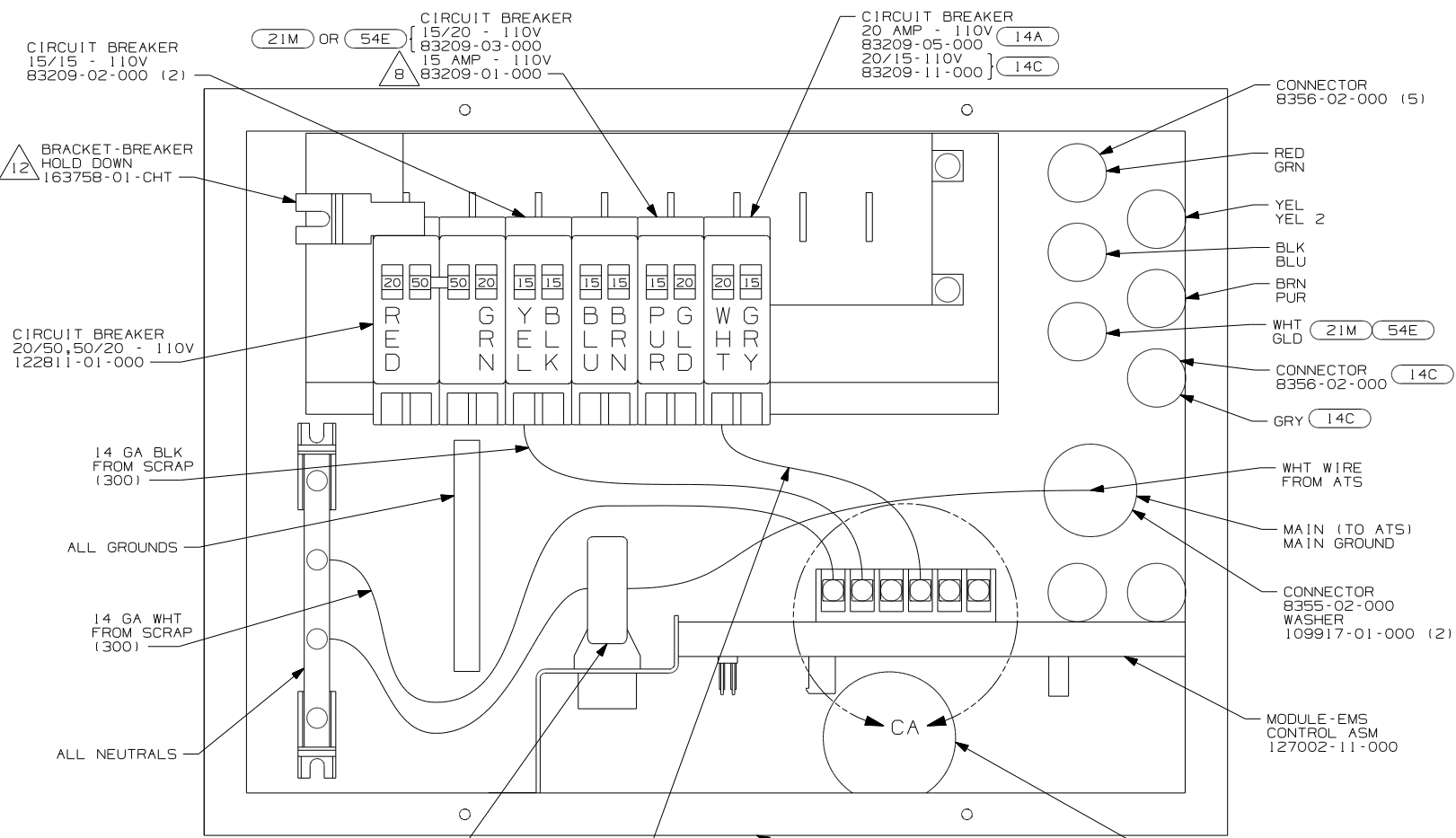
- NOTES:
- SEE DETAIL DF
 - SEE DETAIL DE
 - SEE DETAIL DD
 - SEE DETAIL DC
 - SEE DETAIL DB
 - SEE DETAIL DA

- SLEEP NUMBER BED-QUEEN SIZE
- INVERTER-DC/AC,600 WATT
- FIREPLACE-ELECTRIC
- ELECTRICAL SYSTEM-50 AMP
- CODES/STANDARDS-CSA/CMVSS
- CODES/STANDARDS USA

FIRST USED	
08 G-SERIES	
DO NOT SCALE DRAWING	
TITLE: LOAD CENTER/ATS ASM	
SHEET 2	PART NO 161816 REV

FOR ELECTRICAL TORQUE SPECIFICATIONS SEE DWG NO. 128783-01-000

FOR ELECTRICAL CALLOUTS SEE DWG NO. 121339-01-000



12 LOOSEN LEFT BUSS BAR MOUNTING SCREW, INSERT BRACKET-BREAKER HOLD DOWN UNDER SCREW, ORIENTATE BRACKET TOWARD MAIN BREAKER AS SHOWN AND TIGHTEN SCREW.

11 BLACKEN OUT FIRE PLACE WITH BLACK MARKER WITH (14A)

10 BLACKEN OUT WASHER DRYER WITH BLACK MARKER ON G33V AND G35L WITH (49N)

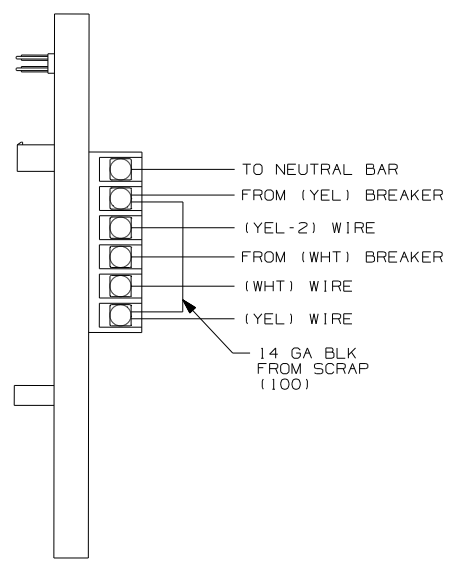
9 INSTALLED BY ASSEMBLY LINE

8 WITHOUT (21M) OR (54E)

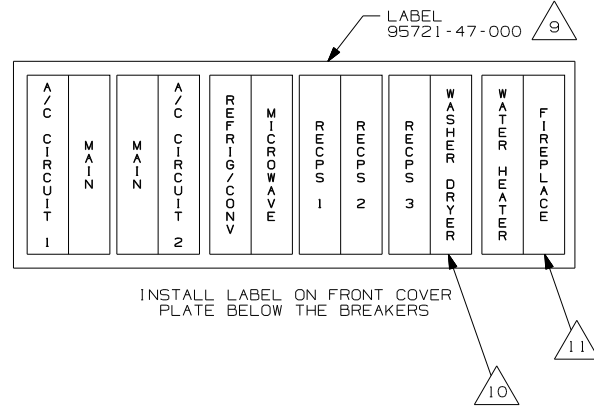
7. REMOVE 400MM FROM OUTER JACKET ON ALL WIRES ENTERING LOAD CENTER AND TRIM INDIVIDUAL CONDUCTORS AS REQUIRED TO MAKE INTERNAL CONNECTIONS
6. WIRE TIE THE FOLLOWING WIRES FOR THE FIRST 1600MM; RED, GREEN, PURPLE, BROWN, 10/2, BLACK, YELLOW, YELLOW 2, AND WHITE, LEAVE THE BLUE WIRE OUT OF THE WIRE TIES.
5. ATTACH WIRES TO BACKSIDE OF LOAD CENTER, USE EXISTING HOLES AND TIE-WIRE 116673-01-000.
4. ALL 110V STRANDED WIRE W/O TERMINALS TO BE STRIPED 10MM AND SOLDER DIPPED.
3. ALL WIRES TO BE CLAMPED WITHIN 200MM OF ATS.
2. GROUND WIRES ARE NOT SHOWN FOR CLARITY.
1. ALL GROUND WIRES TO BE COVERED WITH TUBING 8041-02-000.

NOTES:

LOAD CENTER-120/240,100A
141258-01-000
COVER
141258-02-000 (9)
SCREW
G67-10-12B (4)
(SHOWN WITH COVER REMOVED)



DETAIL CA



INSTALL LABEL ON FRONT COVER PLATE BELOW THE BREAKERS

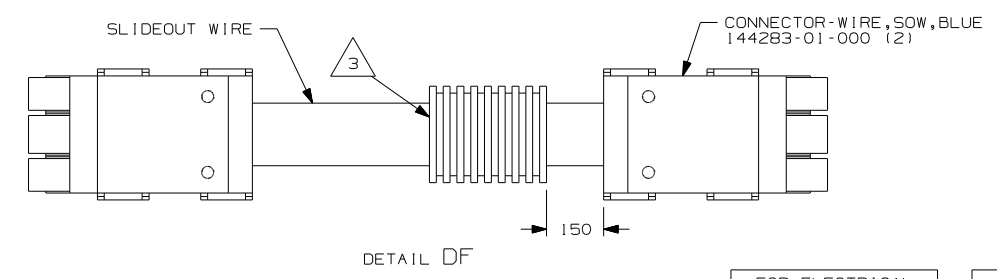
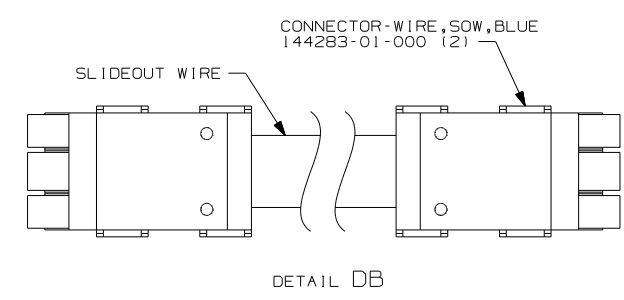
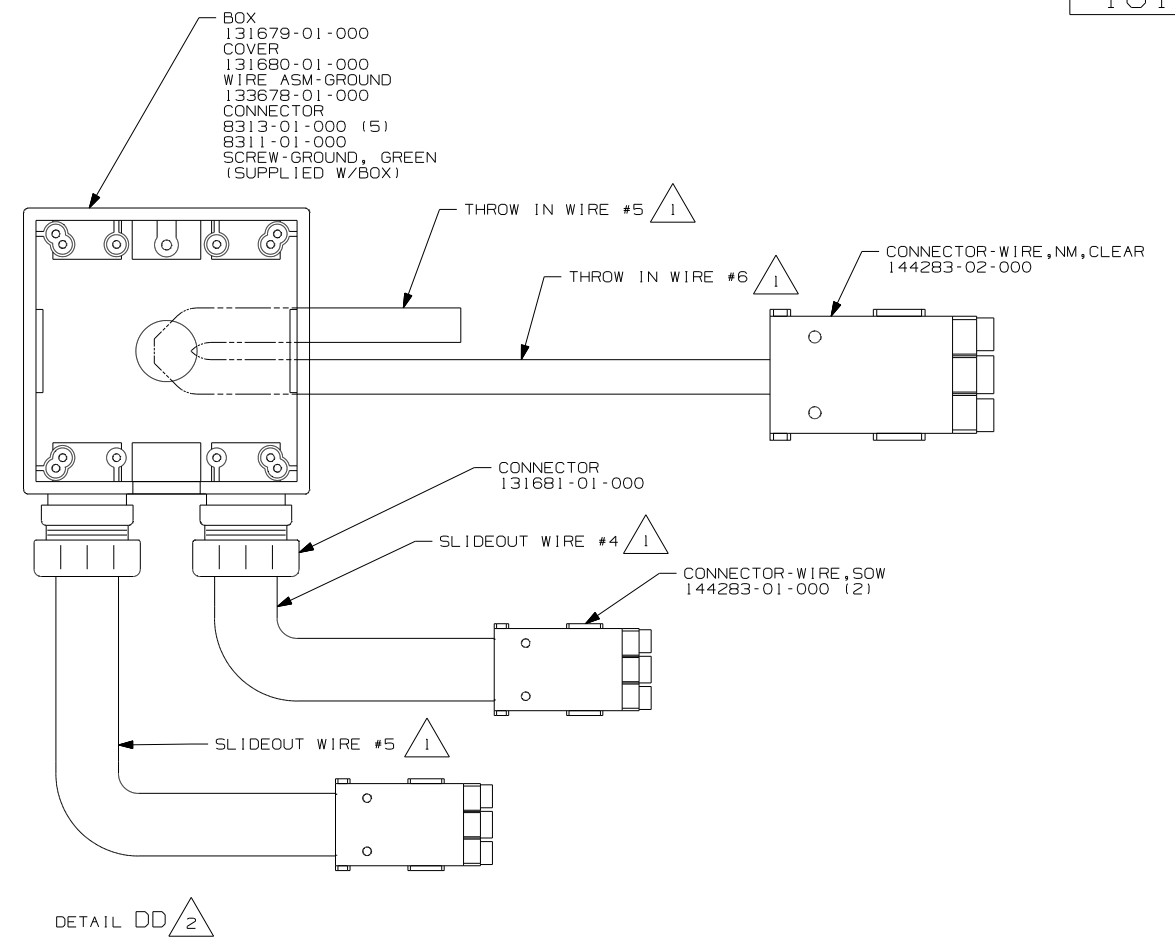
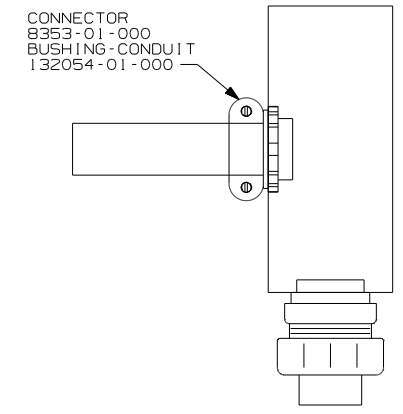
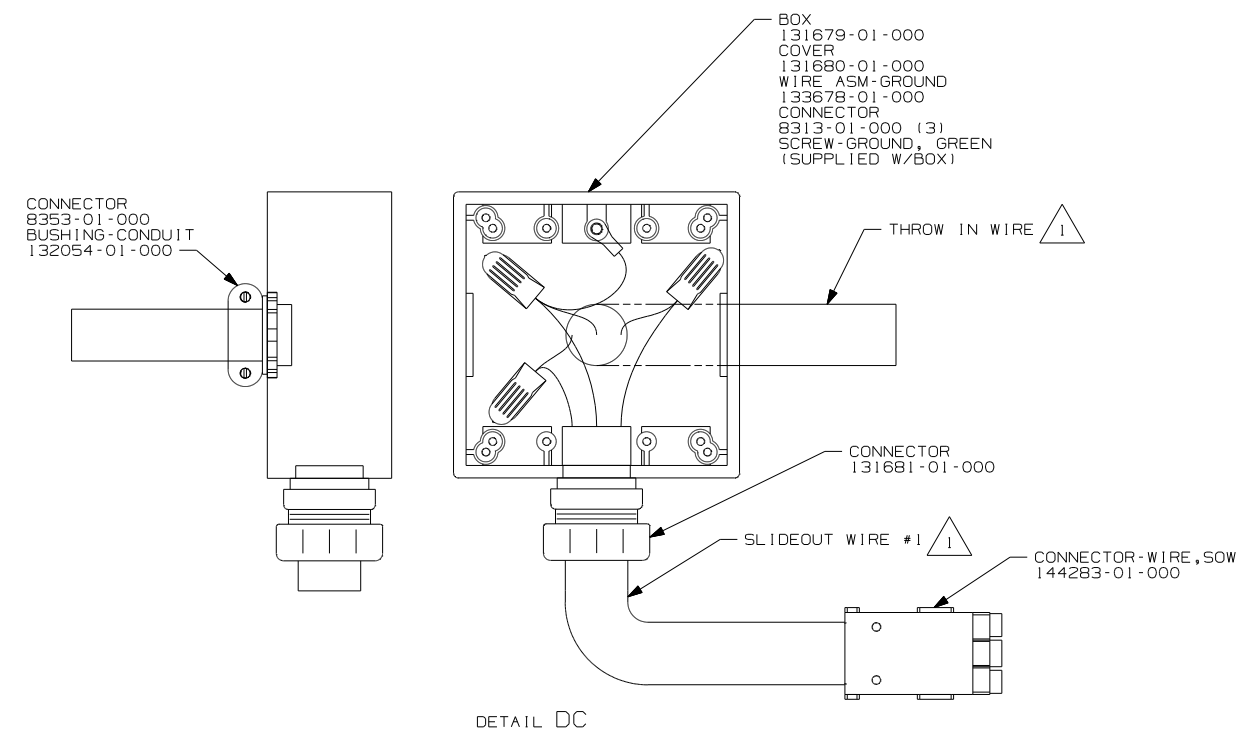
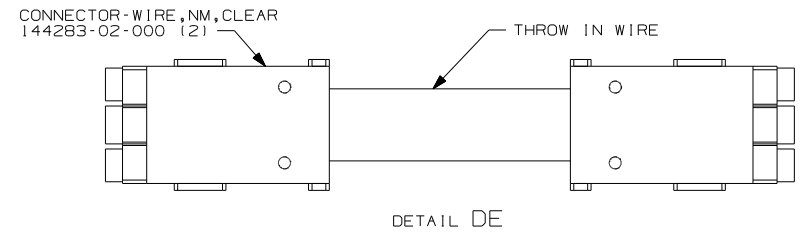
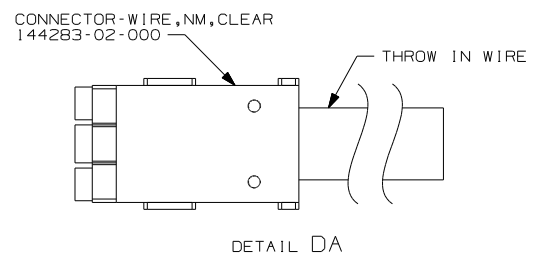
FOR ELECTRICAL TORQUE SPECIFICATIONS SEE DWG NO. 128783-01-000

FOR ELECTRICAL CALLOUTS SEE DWG NO. 121339-01-000

- (54E) WASHER/DRYER
- (52P) GEN-5.5KW ONAN-GAS-MARO GOLD
- (49N) SLEEP NUMBER BED-KING SIZE
- (21M) WASHER/DRYER PREP
- (14C) FIREPLACE-ELECTRIC
- (14A) FIREPLACE-ELECTRIC WITHOUT
- (78J) ELECTRICAL SYSTEM-50 AMP
- (265) CODES/STANDARDS-CSA/CMVSS
- (1B1) CODES/STANDARDS USA

(1B1) (265) (78J)

FIRST USED	
08 G-SERIES	
DO NOT SCALE DRAWING	
TITLE: LOAD CENTER/ATS ASM	
SHEET 3	PART NO 161816 REV



- 3 APPLY 300MM OF CONDUIT-CONVOLUTE 41953-05-000 OVER WIRE AT DIMENSION SHOWN AND SECURE BOTH ENDS OF TUBING TO WIRE WITH TAPE 8363-01-000.
- 2 THE BLACK INDIVIDUAL CONDUCTORS FOR EACH SPECIFIC COLORED CIRCUIT ARE TO BE CONNECTED TOGETHER. THE WHITE INDIVIDUAL CONDUCTORS FOR EACH SPECIFIC COLORED CIRCUIT ARE TO BE CONNECTED TOGETHER. ALL GROUND WIRES ARE TO BE CONNECTED TOGETHER.
- 1 SEE WIRING INSTL-BODY, 110V FOR ADDITIONAL INFORMATION.

NOTES:

FOR ELECTRICAL TORQUE SPECIFICATIONS SEE DWG NO. 128783-01-000

FOR ELECTRICAL CALLOUTS SEE DWG NO. 121339-01-000

- 78J ELECTRICAL SYSTEM-50 AMP
- 265 CODES/STANDARDS-CSA/CMVSS
- 1B1 CODES/STANDARDS USA

FIRST USED	08 G-SERIES	
TITLE:	DO NOT SCALE DRAWING	
	LOAD CENTER/ATS ASM	
SHEET 4	PART NO	161816
		REV