



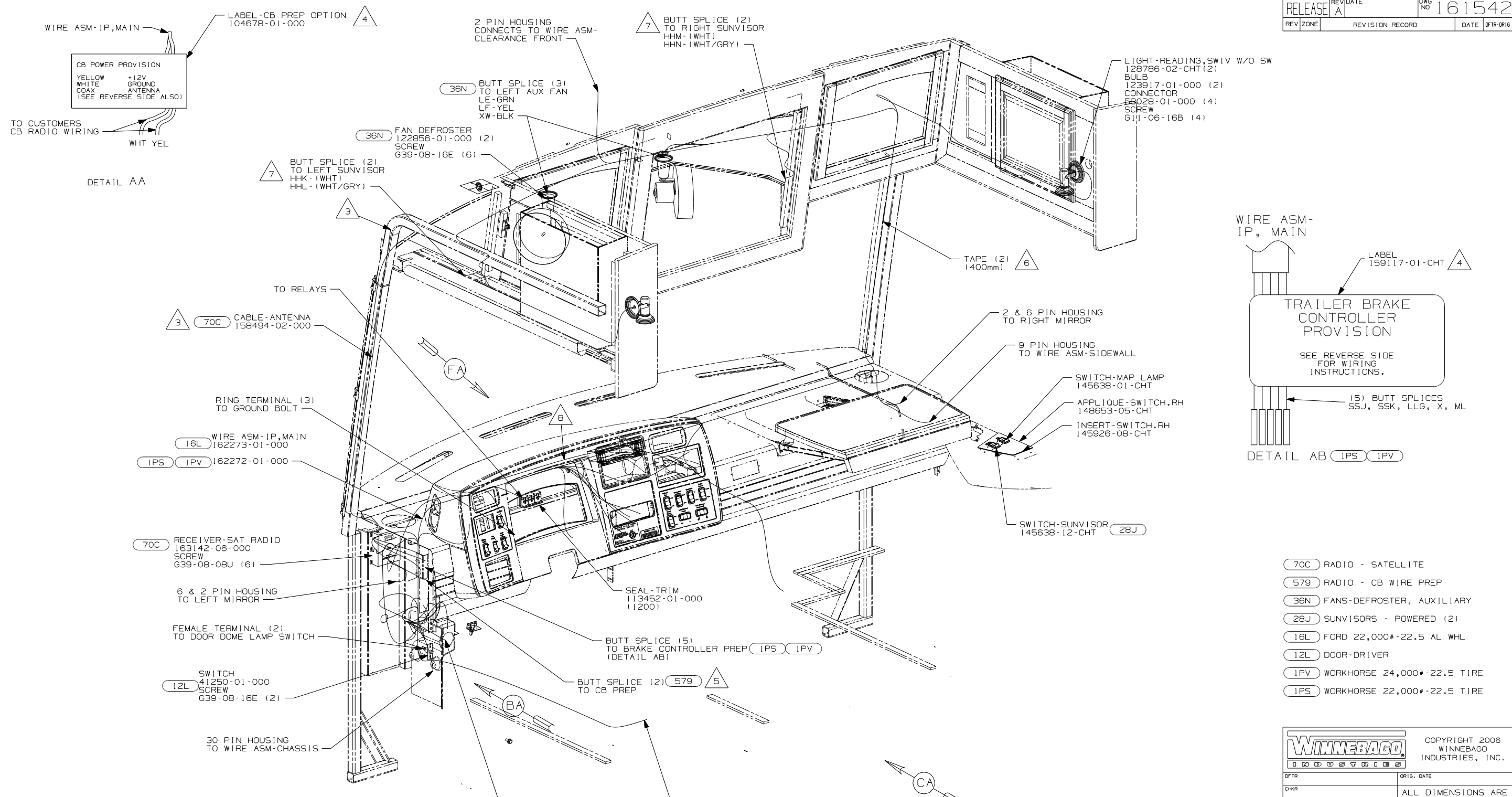
DANGER

Danger of electrical shock, burns or death. Always remove all power sources before attempting any repair, service or diagnostic work. Power can be present from shore power, generator, inverter or battery. All power sources must be disabled and secured before performing any service.



CAUTION

If you lack the skills, tools or equipment to perform diagnostic or repair work leave such work to an authorized Winnebago Industries dealer or other qualified shop.



- △ 6 USE TAPE 136748-01-000 TO SECURE WIRES IN A-POST.
 △ 5 SEE DETAIL AA.
 △ 4 EDGE OF LABEL TO HANG JUST BELOW BOTTOM OF DASH.
 △ 3 SEE ANTENNA INSTL-RADIO & CB FOR ADDITIONAL INFORMATION.
 2. FOR ADDITIONAL INFORMATION SEE WIRING INSTL-CHASSIS.
 1. WINNEBAGO WIRE ASSEMBLIES ARE SHOWN FOR CLARITY.

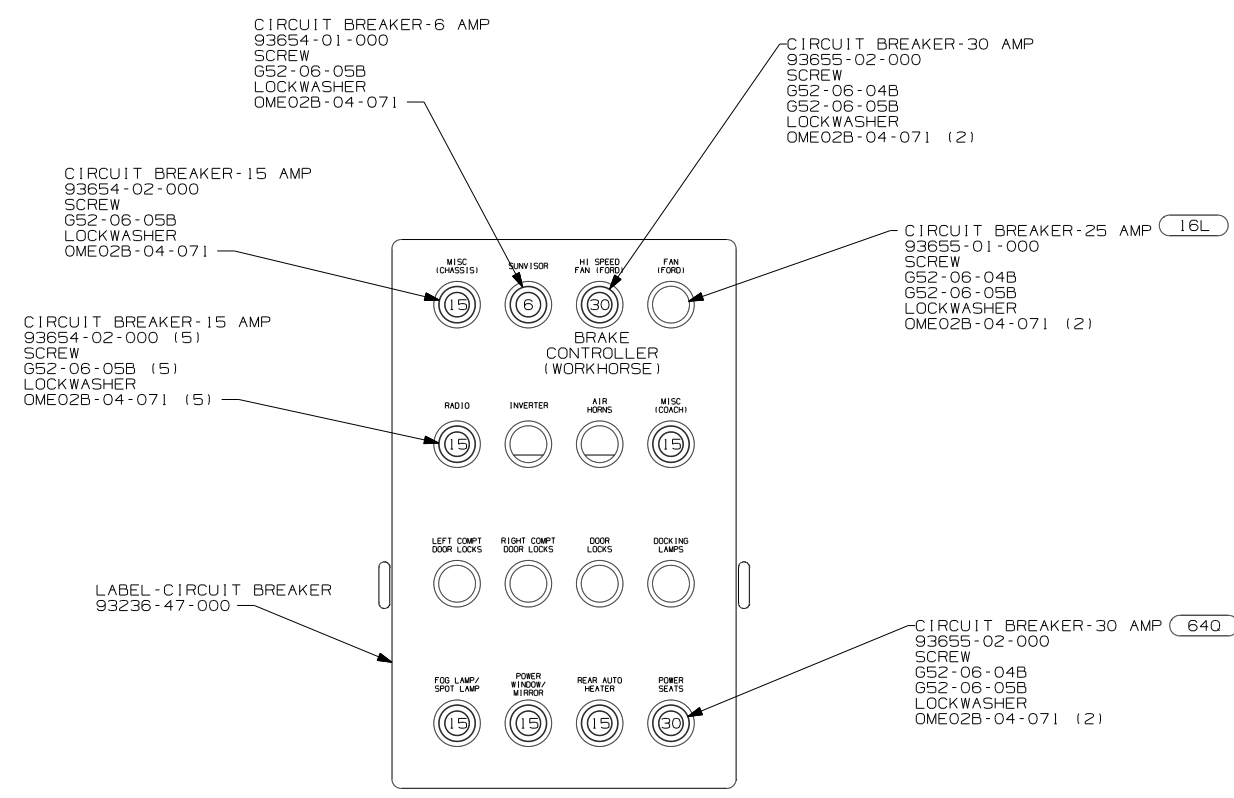
- △ B CABLE SUPPLIED WITH SATELLITE RADIO RECEIVER. PLUG INTO BACK OF RADIO AND TIE TO IP, MAIN.
 △ 7 CUT VISOR WIRING TO 300mm BEFORE CONNECTING

- (70C) RADIO - SATELLITE
 (579) RADIO - CB WIRE PREP
 (36N) FANS-DEFROSTER, AUXILIARY
 (28J) SUNVISORS - POWERED (2)
 (16L) FORD 22,000#-22.5 AL WHL
 (12L) DOOR-DRIVER
 (1PV) WORKHORSE 24,000#-22.5 TIRE
 (1PS) WORKHORSE 22,000#-22.5 TIRE

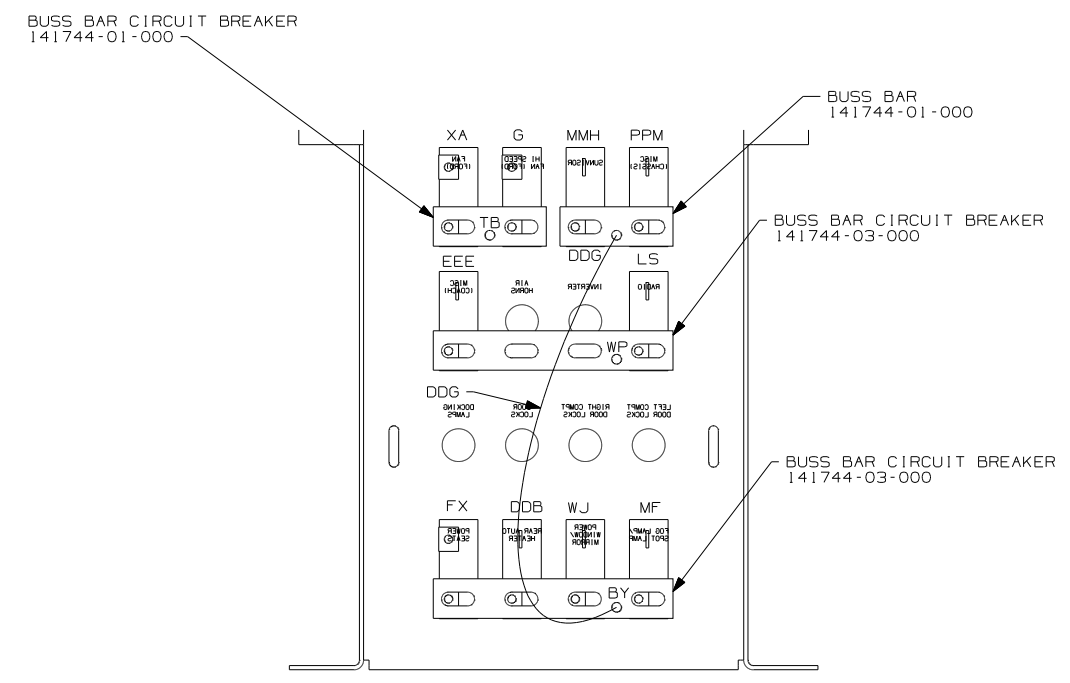
		COPYRIGHT 2006 WINNEBAGO INDUSTRIES, INC.
DFTR	ORIG. DATE	
CHKR	ALL DIMENSIONS ARE IN MILLIMETERS	
P.E.	FIRST USED	
M.E.	08 G-SERIES	
DSNR		
UNSPECIFIED TOLERANCES ARE:	MATERIAL:	
WHOLE DIM (X)	: 3	
ONE-PLACE (X.X)	: 1.5	
TWO-PLACE (X.XX)	: 0.50	
ANGLE	: 1°	
THIRD ANGLE PROJECTION		
DO NOT SCALE DRAWING		
TITLE: WIRING INSTL-FRONT END		
SHEET 1 of 5	PART NO	161542
REF:	1 7/31/2007	

FOR ELECTRICAL TORQUE SPECIFICATIONS SEE DWG NO. 128783-01-000

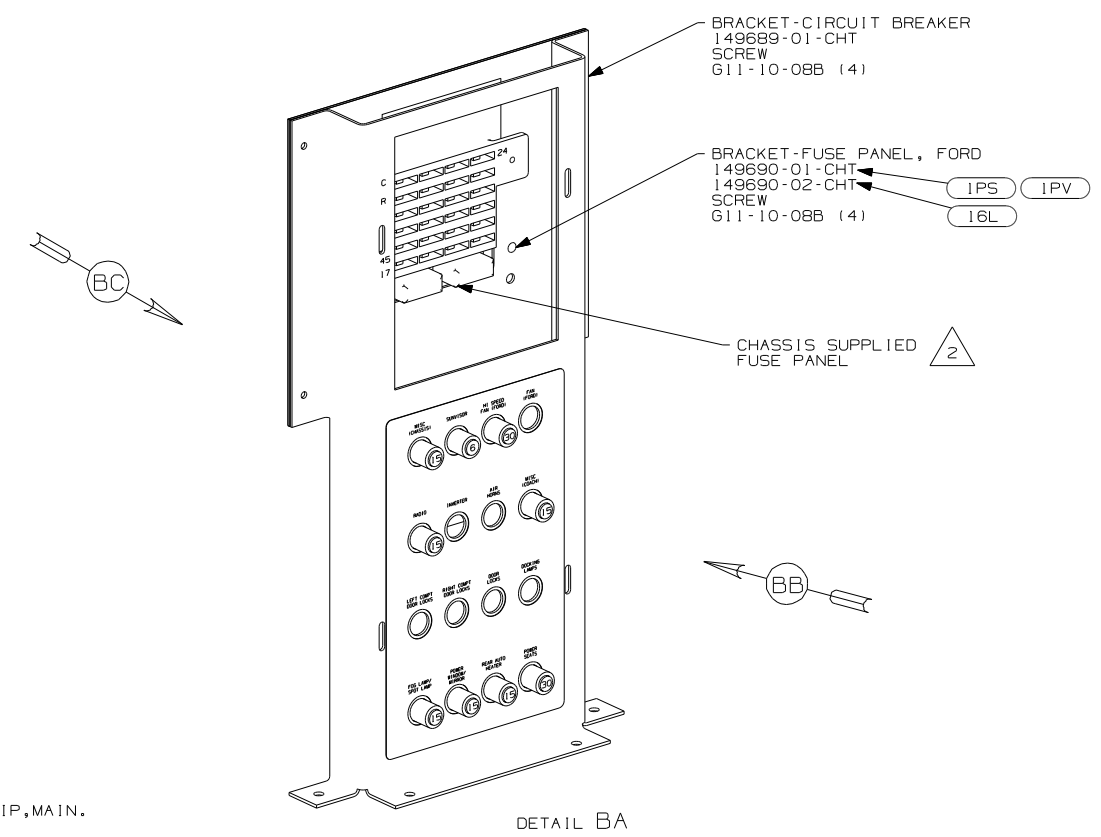
FOR ELECTRICAL CALLOUTS SEE DWG NO. 121339-01-000



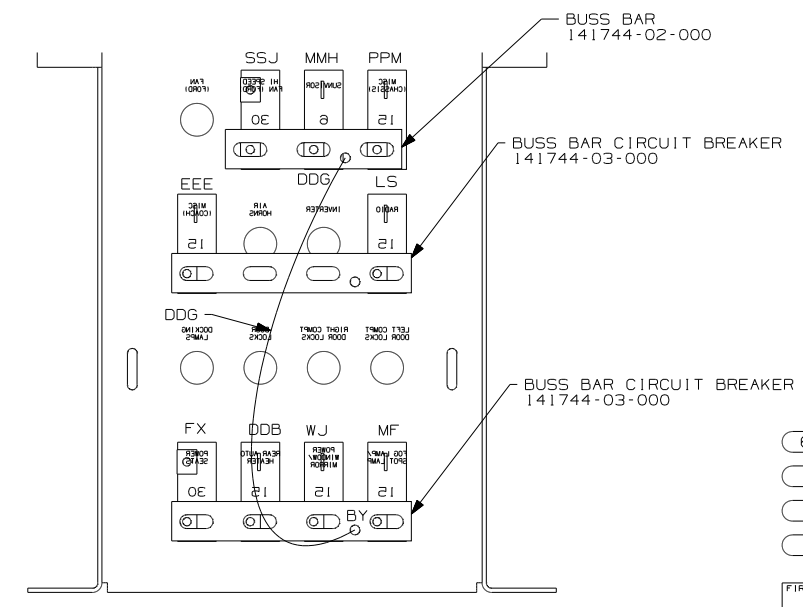
DETAIL BB



DETAIL BC 1 (16L)



DETAIL BA

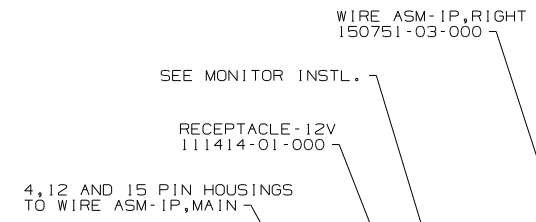
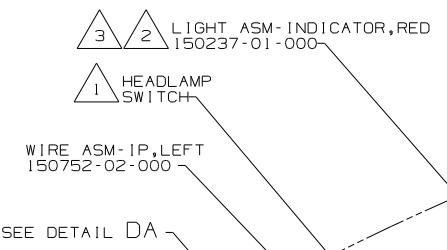
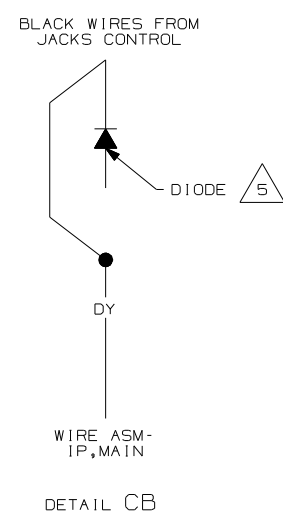


DETAIL BC 1 (1PS 1PV)

- (64Q) SEAT PED-6-WAY POWER DRIVER
- (16L) FORD 22,000#-22.5 AL WHL
- (1PV) WORKHORSE 24,000#-22.5 TIRE
- (1PS) WORKHORSE 22,000#-22.5 TIRE

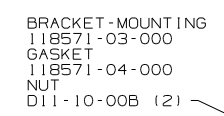
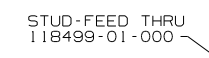
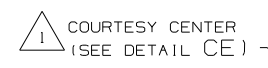
NOTES:
 (2) WORKHORSE PANEL SHOWN.
 (1) ALL CIRCUITS ARE IN WIRE ASM-IP,MAIN.

FIRST USED	08 G-SERIES	
TITLE:	DO NOT SCALE DRAWING	
	WIRING INSTL-FRONT END	
SHEET 2	PART NO	161542
	REV	

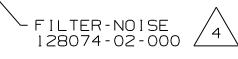


SEE RADIO INSTL.

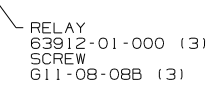
SEE DETAIL DA



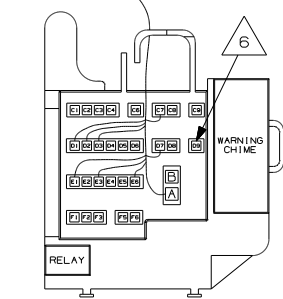
SEE LEVELING SYSTEM INSTL



CLUSTER CHASSIS SUPPLIED



WIRE ASM-IP,MAIN



VIEW CE COURTESY CENTER (CHASSIS SUPPLIED) IPS IPV

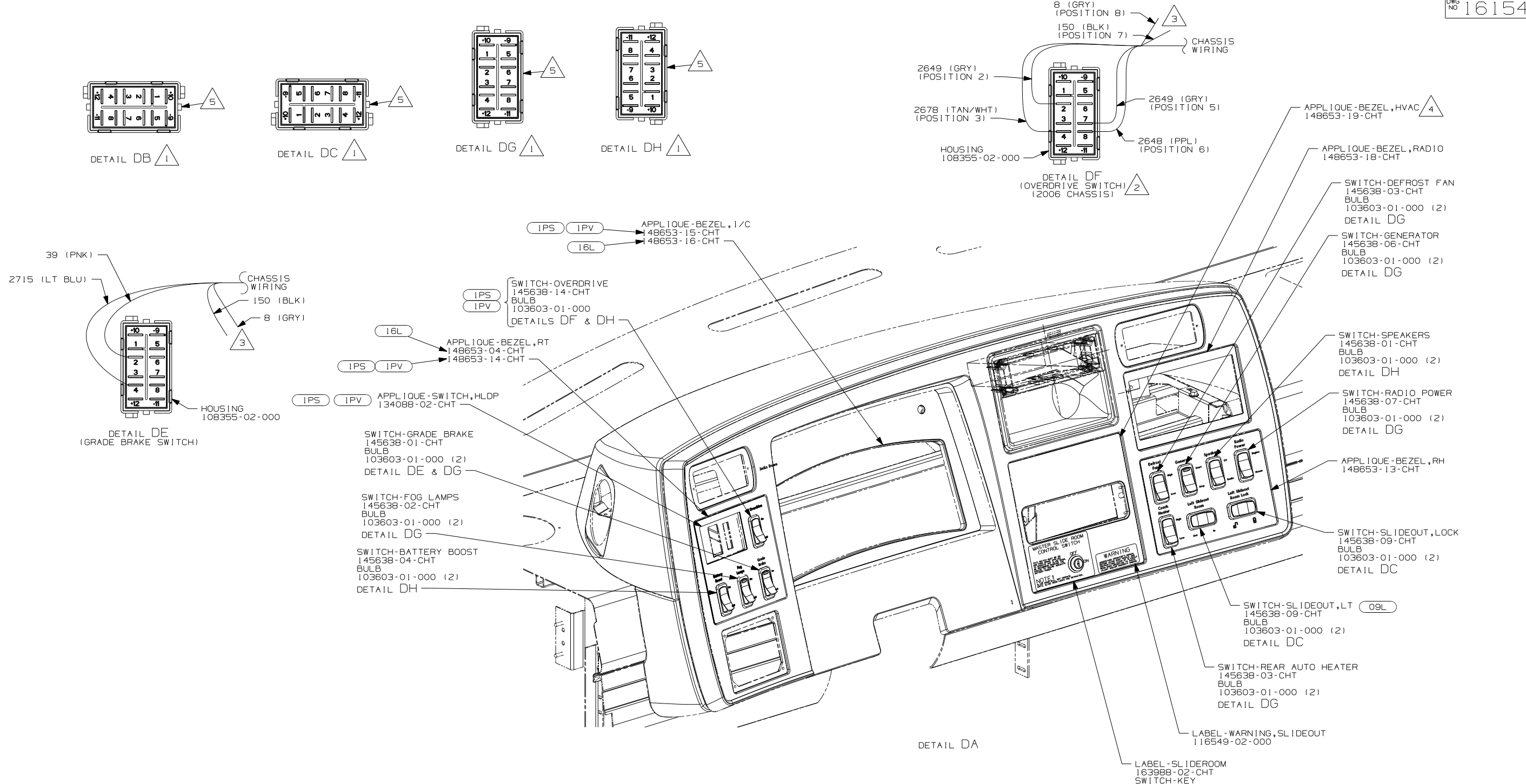
- 6 CONNECT CHASSIS SUPPLIED HOUSING LABELED "SEAT BELT BYPASS" TO POSITION D9 IN CONVENIENCE CENTER.
- 5 DIODE NOT USED, TIE BACK INTO LOOM.
- 4 MOUNT ON TOP LEFT REAR CORNER OF PANEL-COVER,RADIATOR.
- 3 WIRING FROM HWH. SEE DETAIL CB FOR PARK BRAKE WIRING. SEE LEVELING SYSTEM INSTL. FOR ADDITIONAL INFORMATION
- 2 CONNECT POSITIVE WIRE TO TERMINAL MARKED WITH A "+". YELLOW-WINNEBAGO WIRING RED-HWH WIRING
- 1 CHASSIS SUPPLIED

NOTES:

IPV WORKHORSE 24,000#-22.5 TIRE

IPS WORKHORSE 22,000#-22.5 TIRE

FIRST USED	08 G-SERIES		
TITLE:	DO NOT SCALE DRAWING		
	WIRING INSTL-FRONT END		
SHEET 3	PART NO	161542	REV

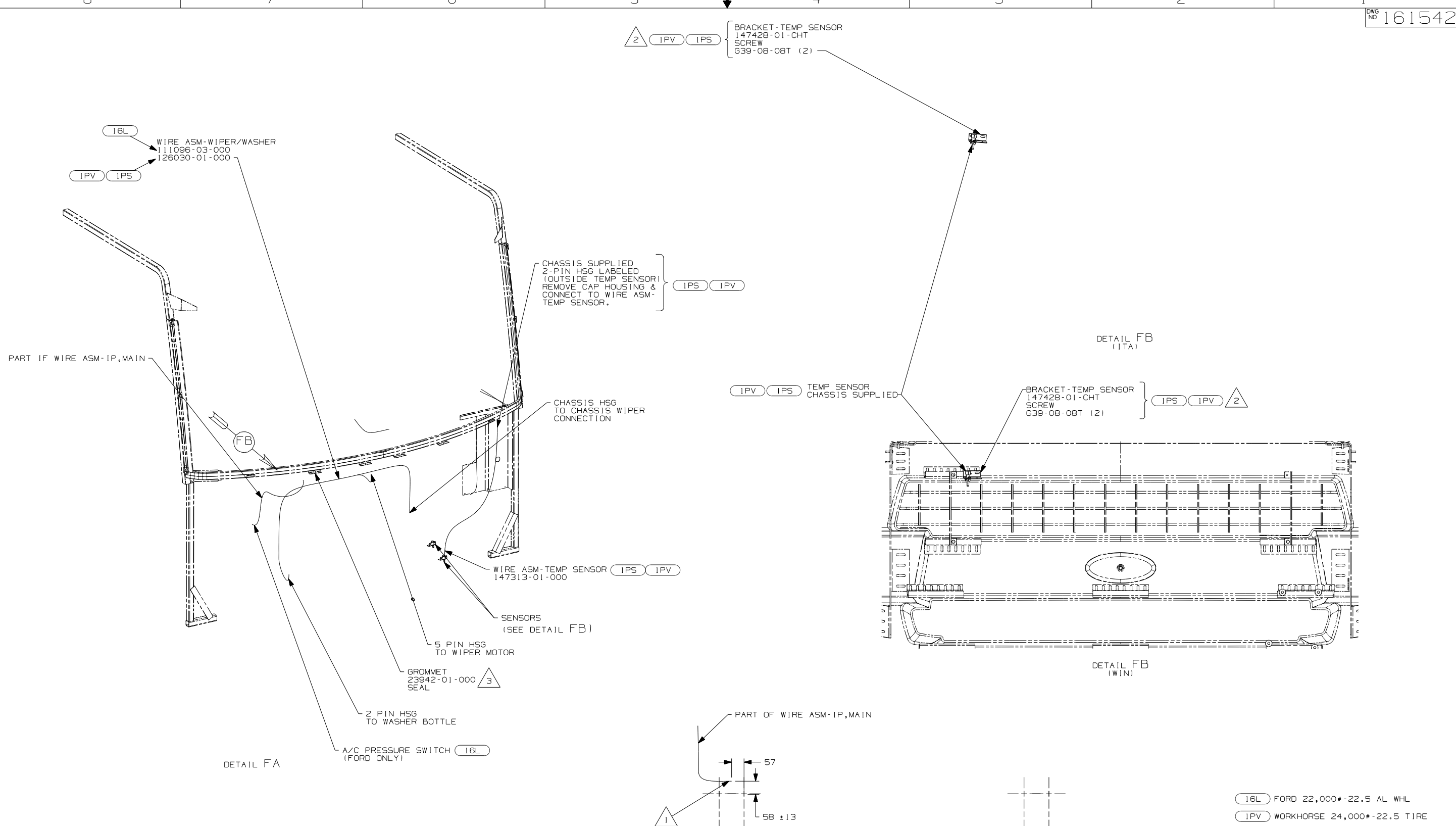


- 5 WITH SWITCH INSTALLED, THIS SIDE OF SWITCH WILL FACE LEFT SIDEWALL.
- 4 WINNEBAGO ONLY
- 3 REMOVE TERMINALS & TAPE BACK TO LOOM.
- 2 POSITIONS NOTED IN PARENTHESIS ARE LOCATIONS IN WORKHORSE SUPPLIED HOUSING.
- 1 DETAIL IS LOOKING AT SWITCH FROM THE BACK SIDE OF SWITCH WHEN IT IS INSTALLED.

NOTES:

- 16L FORD 22,000#-22.5 AL WHL
- IPV WORKHORSE 24,000#-22.5 TIRE
- IPS WORKHORSE 22,000#-22.5 TIRE
- 09L SLIDEOUT ROOM FRONT LEFT

FIRST USED	08 G-SERIES		
TITLE:	DO NOT SCALE DRAWING		
	WIRING INSTL-FRONT END		
SHEET 4	PART NO	161542	
		REV	



- 3 ROUTE WIRES THROUGH HOLE IN STEEL.
- 2 MOUNT SENSOR OR SENSOR BRACKET TO HORIZONTAL TUBE ON FIBERGLASS AS SHOWN.

1. GATHER ALL EXCESS WIRE AFTER MAKING ALL CONNECTIONS. BUNDLE AND SECURE WITH WIRE TIE 8343-01-000 OR 93147-01-000.

NOTES:

- 16L FORD 22,000#-22.5 AL WHL
- 1PV WORKHORSE 24,000#-22.5 TIRE
- 1PS WORKHORSE 22,000#-22.5 TIRE

FIRST USED		08 G-SERIES	
DO NOT SCALE DRAWING			
TITLE: WIRING INSTL-FRONT END			
SHEET 5	PART NO	161542	REV