



DANGER

Danger of electrical shock, burns or death. Always remove all power sources before attempting any repair, service or diagnostic work. Power can be present from shore power, generator, inverter or battery. All power sources must be disabled and secured before performing any service.



CAUTION

If you lack the skills, tools or equipment to perform diagnostic or repair work leave such work to an authorized Winnebago Industries dealer or other qualified shop.

DRAWING NO.	FEATURES	SHEETS
161513-01	1PN 1PS 1PV	1,2,4
161513-02	16L 16M	1,3,4
161513-03	1PN 1PS 1PV	1,2,5
161513-04	16L 16M	1,3,5

2
2

		F32H	F33V	F35A	F35L	F38J	F33S	F38S
CABLE ASM-CHASSIS GND EXT (BLK)	16M 16L	133566-12-031	133566-12-019	133566-12-010	133566-12-019	N/A	133566-12-019	133566-12-047
CABLE ASM-CHASSIS POWER EXT (RED)	16M 16L	141415-32-033	141415-32-021	141415-32-010	141415-32-021	N/A	141415-32-021	141415-32-049
CABLE ASM-CHASSIS BATTERY (RED)	16M 16L	141415-32-007	141415-32-007	141415-32-007	141415-32-007	N/A	141415-32-007	141415-32-007
CABLE ASM-STARTER (RED)	1PN 1PS 1PV	141415-35-038	141415-35-026	141415-35-015	141415-35-026	141415-35-054	141415-35-026	141415-35-054
CABLE ASM-COACH BATTERY (YEL)		141416-52-012	141416-52-008	141416-52-008	141416-52-008	141416-52-008	141416-52-008	141416-52-008
CABLE ASM-COACH BATTERY GND (BLK)		133567-12-006	133567-12-006	133567-12-006	133567-12-006	133567-12-006	133567-12-006	133567-12-006
CABLE ASM-CHASSIS BATTERY (PUR)		141415-12-011	141415-12-008	141415-12-008	141415-12-008	141415-12-008	141415-12-008	141415-12-008
CABLE ASM-GENERATOR (GRN)	321 52P	141415-42-071	141415-42-075	141415-42-095	141415-42-088	141415-42-066	141415-42-081	141415-42-066
WIRE ASM-INVERTER	40D	154845-01-009	154845-01-007	154845-01-027	154845-01-007	154845-01-018	154845-01-007	154845-01-018
LEVELING SYSTEM POWER CABLE (BLU)	60M 64H	141415-22-049	141415-22-037	141415-22-031	141415-22-037	141415-22-070	141415-22-037	141415-22-070
LEVELING SYSTEM GND CABLE (BLK)	60M 64H	133566-11-008	133566-11-008	133566-11-008	133566-11-008	133566-11-008	133566-11-008	133566-11-008

1

		G33V	G35A	G35L	G37B	G38J	G38T
CABLE ASM-CHASSIS GND EXT (BLK)	16L	133566-12-019	133566-12-010	133566-12-019	N/A	N/A	N/A
CABLE ASM-CHASSIS POWER EXT (RED)	16L	141415-32-021	141415-32-010	141415-32-021	N/A	N/A	N/A
CABLE ASM-CHASSIS BATTERY (RED)	16L	141415-32-007	141415-32-007	141415-32-007	N/A	N/A	N/A
CABLE ASM-STARTER (RED)	1PS 1PV	141415-35-026	141415-35-015	141415-35-026	141415-35-026	141415-35-054	141415-35-046
CABLE ASM-COACH BATTERY (YEL)		141416-52-008	141416-52-008	141416-52-008	141416-52-008	141416-52-008	141416-52-008
CABLE ASM-COACH BATTERY GND (BLK)		133567-12-006	133567-12-006	133567-12-006	133567-12-006	133567-12-006	133567-12-006
CABLE ASM-CHASSIS BATTERY (PUR)		141415-12-008	141415-12-008	141415-12-008	141415-12-008	141415-12-008	141415-12-008
CABLE ASM-GENERATOR (GRN)	321 52P	141415-42-074	141415-42-092	141415-42-088	141415-42-090	141415-42-066	141415-42-074
WIRE ASM-INVERTER	40D	154845-01-007	154845-01-025	154845-01-007	154845-01-007	154845-01-018	154845-01-012
LEVELING SYSTEM POWER CABLE (BLU)	60M	141415-22-037	141415-22-033	141415-22-037	141415-22-042	141415-22-070	141415-22-061

1

- 52P GEN-5.5KW ONAN-GAS-MARO GOLD
- 321 GENERATOR PREP KIT
- 64H HYDRAULIC LEVELING JACKS
- 60M HYDRAULIC LEVEL JACKS-AUTO
- 40D INVERTER-DC/AC,600 WATT
- 1PV WORKHORSE 24,000#-22.5 TIRE
- 1PS WORKHORSE 22,000#-22.5 TIRE
- 1PN WORKHORSE 20,700#
- 16M FORD CHASSIS 20,500#/V10 ENG
- 16L FORD 22,000#-22.5 AL WHL
- 265 CODES/STANDARDS-CSA/CMVSS
- 1B1 CODES/STANDARDS USA

2 USED ON F32H ONLY.
1 BATTERY CABLES MUST BE INSTALLED TO STARTER MOTOR BEFORE ENGINE WIRING HARNESS AND ROUTED IN SUCH A MANNER AS TO PREVENT ANY POSSIBLE DEGRADATION FROM THE EXHAUST SYSTEM.

NOTES:

FOR ELECTRICAL TORQUE SPECIFICATIONS SEE DWG NO. 128783-01-000

FOR ELECTRICAL CALLOUTS SEE DWG NO. 121339-01-000

WINNEBAGO COPYRIGHT 2006 WINNEBAGO INDUSTRIES, INC.

DFTR _____ ORIG. DATE _____
CHKR _____ ALL DIMENSIONS ARE IN MILLIMETERS
P.E. _____
M.E. _____ FIRST USED _____
DSNR _____ 08 F&G-SERIES

UNSPECIFIED TOLERANCES ARE: MATERIAL:
HOLE DIM (X) :
ONE-PLACE (X.X) :
TWO-PLACE (X.XX) :
ANGLE :

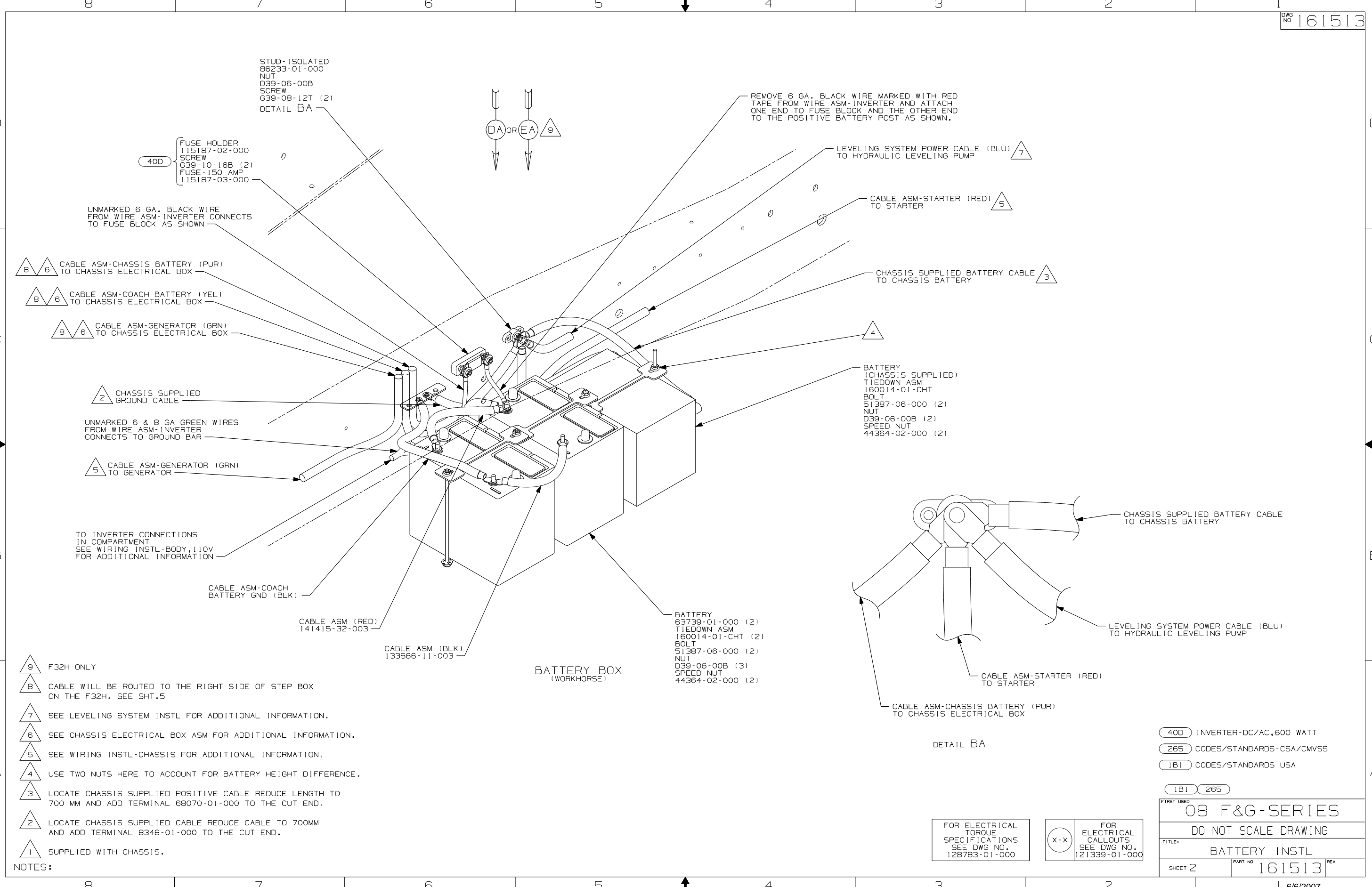
THIRD ANGLE PROJECTION

DO NOT SCALE DRAWING

TITLE: BATTERY INSTL

SHEET 1 OF 5 PART NO 161513 REV

REF: 1 6/6/2007



STUD-ISOLATED
86233-01-000
NUT
D39-06-00B
SCREW
G39-08-12T (2)
DETAIL BA

40D
FUSE HOLDER
115187-02-000
SCREW
G39-10-16B (2)
FUSE-150 AMP
115187-03-000

UNMARKED 6 GA. BLACK WIRE
FROM WIRE ASM-INVERTER CONNECTS
TO FUSE BLOCK AS SHOWN

REMOVE 6 GA. BLACK WIRE MARKED WITH RED
TAPE FROM WIRE ASM-INVERTER AND ATTACH
ONE END TO FUSE BLOCK AND THE OTHER END
TO THE POSITIVE BATTERY POST AS SHOWN.

LEVELING SYSTEM POWER CABLE (BLU)
TO HYDRAULIC LEVELING PUMP

CABLE ASM-STARTER (RED)
TO STARTER

CHASSIS SUPPLIED BATTERY CABLE
TO CHASSIS BATTERY

CABLE ASM-CHASSIS BATTERY (PUR)
TO CHASSIS ELECTRICAL BOX

CABLE ASM-COACH BATTERY (YEL)
TO CHASSIS ELECTRICAL BOX

CABLE ASM-GENERATOR (GRN)
TO CHASSIS ELECTRICAL BOX

CHASSIS SUPPLIED
GROUND CABLE

UNMARKED 6 & 8 GA GREEN WIRES
FROM WIRE ASM-INVERTER
CONNECTS TO GROUND BAR

CABLE ASM-GENERATOR (GRN)
TO GENERATOR

TO INVERTER CONNECTIONS
IN COMPARTMENT
SEE WIRING INSTL-BODY,110V
FOR ADDITIONAL INFORMATION

CABLE ASM-COACH
BATTERY GND (BLK)

CABLE ASM (RED)
141415-32-003

CABLE ASM (BLK)
133566-11-003

BATTERY BOX
(WORKHORSE)

BATTERY
63739-01-000 (2)
TIEDOWN ASM
160014-01-CHT (2)
BOLT
51387-06-000 (2)
NUT
D39-06-00B (3)
SPEED NUT
44364-02-000 (2)

BATTERY
(CHASSIS SUPPLIED)
TIEDOWN ASM
160014-01-CHT (2)
BOLT
51387-06-000 (2)
NUT
D39-06-00B (2)
SPEED NUT
44364-02-000 (2)

CHASSIS SUPPLIED BATTERY CABLE
TO CHASSIS BATTERY

LEVELING SYSTEM POWER CABLE (BLU)
TO HYDRAULIC LEVELING PUMP

CABLE ASM-STARTER (RED)
TO STARTER

CABLE ASM-CHASSIS BATTERY (PUR)
TO CHASSIS ELECTRICAL BOX

DETAIL BA

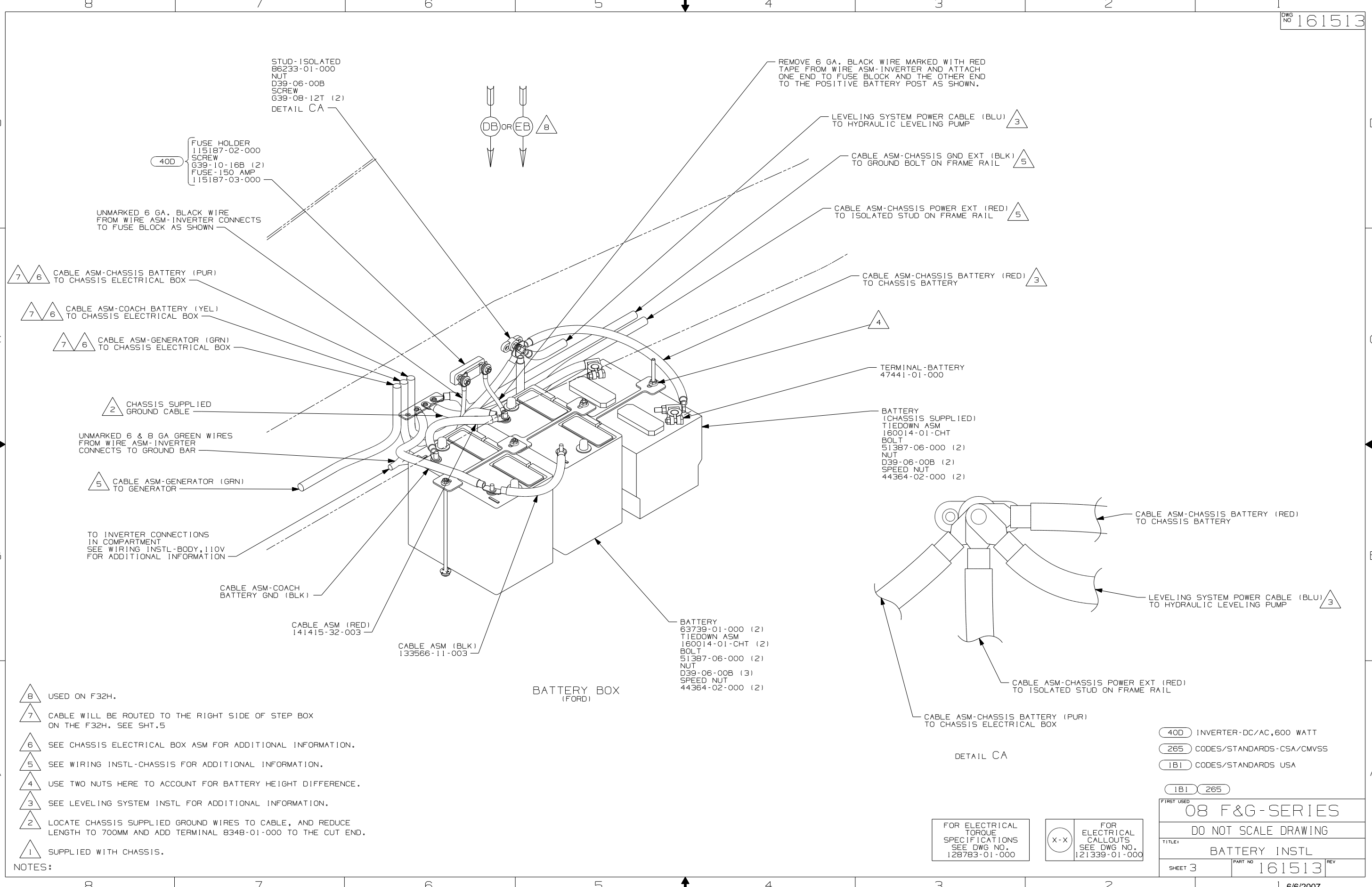
40D INVERTER-DC/AC,600 WATT
265 CODES/STANDARDS-CSA/CMVSS
1B1 CODES/STANDARDS USA

FIRST USED	
08 F&G-SERIES	
DO NOT SCALE DRAWING	
TITLE: BATTERY INSTL	
SHEET 2	PART NO 161513

FOR ELECTRICAL
TORQUE
SPECIFICATIONS
SEE DWG NO.
128783-01-000

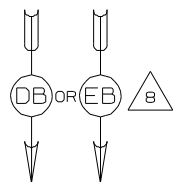
FOR
ELECTRICAL
CALLOUTS
SEE DWG NO.
121339-01-000

- NOTES:
- 9 F32H ONLY
 - 8 CABLE WILL BE ROUTED TO THE RIGHT SIDE OF STEP BOX ON THE F32H. SEE SHT.5
 - 7 SEE LEVELING SYSTEM INSTL FOR ADDITIONAL INFORMATION.
 - 6 SEE CHASSIS ELECTRICAL BOX ASM FOR ADDITIONAL INFORMATION.
 - 5 SEE WIRING INSTL-CHASSIS FOR ADDITIONAL INFORMATION.
 - 4 USE TWO NUTS HERE TO ACCOUNT FOR BATTERY HEIGHT DIFFERENCE.
 - 3 LOCATE CHASSIS SUPPLIED POSITIVE CABLE REDUCE LENGTH TO 700 MM AND ADD TERMINAL 68070-01-000 TO THE CUT END.
 - 2 LOCATE CHASSIS SUPPLIED CABLE REDUCE CABLE TO 700MM AND ADD TERMINAL 8348-01-000 TO THE CUT END.
 - 1 SUPPLIED WITH CHASSIS.



40D FUSE HOLDER 115187-02-000 SCREW G39-10-16B (2) FUSE-150 AMP 115187-03-000

STUD-ISOLATED 86233-01-000 NUT D39-06-00B SCREW G39-08-12T (2) DETAIL CA



REMOVE 6 GA. BLACK WIRE MARKED WITH RED TAPE FROM WIRE ASM-INVERTER AND ATTACH ONE END TO FUSE BLOCK AND THE OTHER END TO THE POSITIVE BATTERY POST AS SHOWN.

LEVELING SYSTEM POWER CABLE (BLU) TO HYDRAULIC LEVELING PUMP 3

CABLE ASM-CHASSIS GND EXT (BLK) TO GROUND BOLT ON FRAME RAIL 5

CABLE ASM-CHASSIS POWER EXT (RED) TO ISOLATED STUD ON FRAME RAIL 5

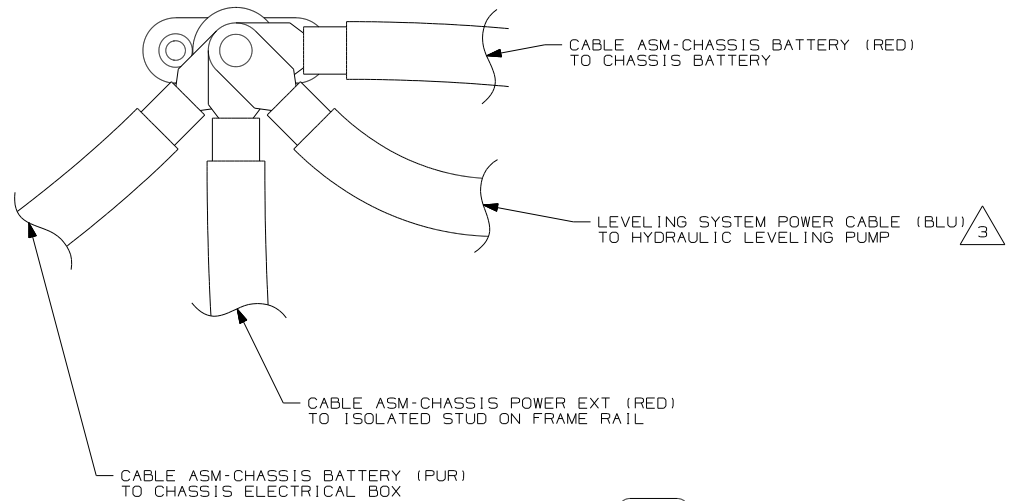
CABLE ASM-CHASSIS BATTERY (RED) TO CHASSIS BATTERY 3

TERMINAL-BATTERY 47441-01-000

BATTERY (CHASSIS SUPPLIED) TIEDOWN ASM 160014-01-CHT BOLT 51387-06-000 (2) NUT D39-06-00B (2) SPEED NUT 44364-02-000 (2)

BATTERY 63739-01-000 (2) TIEDOWN ASM 160014-01-CHT (2) BOLT 51387-06-000 (2) NUT D39-06-00B (3) SPEED NUT 44364-02-000 (2)

BATTERY BOX (FORD)



CABLE ASM-CHASSIS BATTERY (RED) TO CHASSIS BATTERY

LEVELING SYSTEM POWER CABLE (BLU) TO HYDRAULIC LEVELING PUMP 3

CABLE ASM-CHASSIS POWER EXT (RED) TO ISOLATED STUD ON FRAME RAIL

CABLE ASM-CHASSIS BATTERY (PUR) TO CHASSIS ELECTRICAL BOX

DETAIL CA

- 8 USED ON F32H.
- 7 CABLE WILL BE ROUTED TO THE RIGHT SIDE OF STEP BOX ON THE F32H. SEE SHT.5
- 6 SEE CHASSIS ELECTRICAL BOX ASM FOR ADDITIONAL INFORMATION.
- 5 SEE WIRING INSTL-CHASSIS FOR ADDITIONAL INFORMATION.
- 4 USE TWO NUTS HERE TO ACCOUNT FOR BATTERY HEIGHT DIFFERENCE.
- 3 SEE LEVELING SYSTEM INSTL FOR ADDITIONAL INFORMATION.
- 2 LOCATE CHASSIS SUPPLIED GROUND WIRES TO CABLE, AND REDUCE LENGTH TO 700MM AND ADD TERMINAL 8348-01-000 TO THE CUT END.
- 1 SUPPLIED WITH CHASSIS.

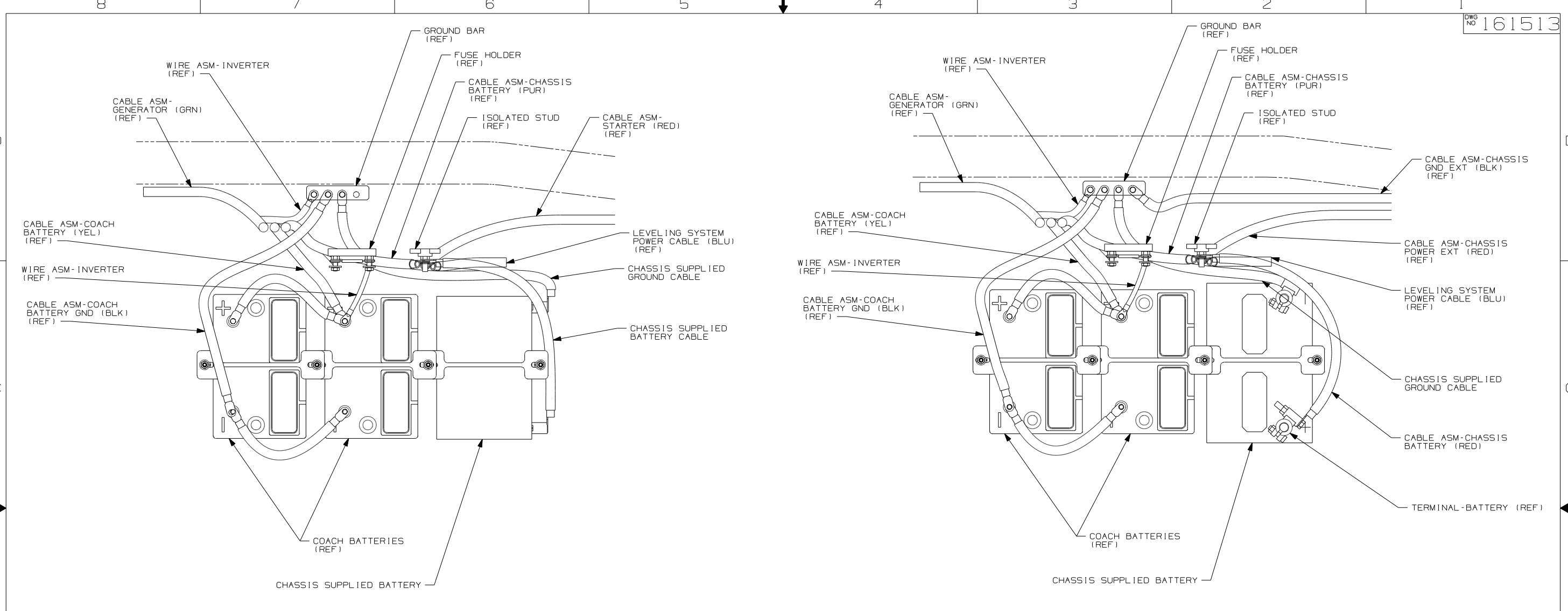
NOTES:

- 40D INVERTER-DC/AC,600 WATT
- 265 CODES/STANDARDS-CSA/CMVSS
- 1B1 CODES/STANDARDS USA

FIRST USED	
08 F&G-SERIES	
DO NOT SCALE DRAWING	
TITLE: BATTERY INSTL	
SHEET 3	PART NO 161513 REV

FOR ELECTRICAL TORQUE SPECIFICATIONS SEE DWG NO. 128783-01-000

X-X FOR ELECTRICAL CALLOUTS SEE DWG NO. 121339-01-000



VIEW DA (WORKHORSE)

VIEW DB (FORD)

265 CODES/STANDARDS - CSA/CMVSS

1B1 CODES/STANDARDS USA

1B1 265

FIRST USED 08 F&G-SERIES

DO NOT SCALE DRAWING

TITLE: BATTERY INSTL

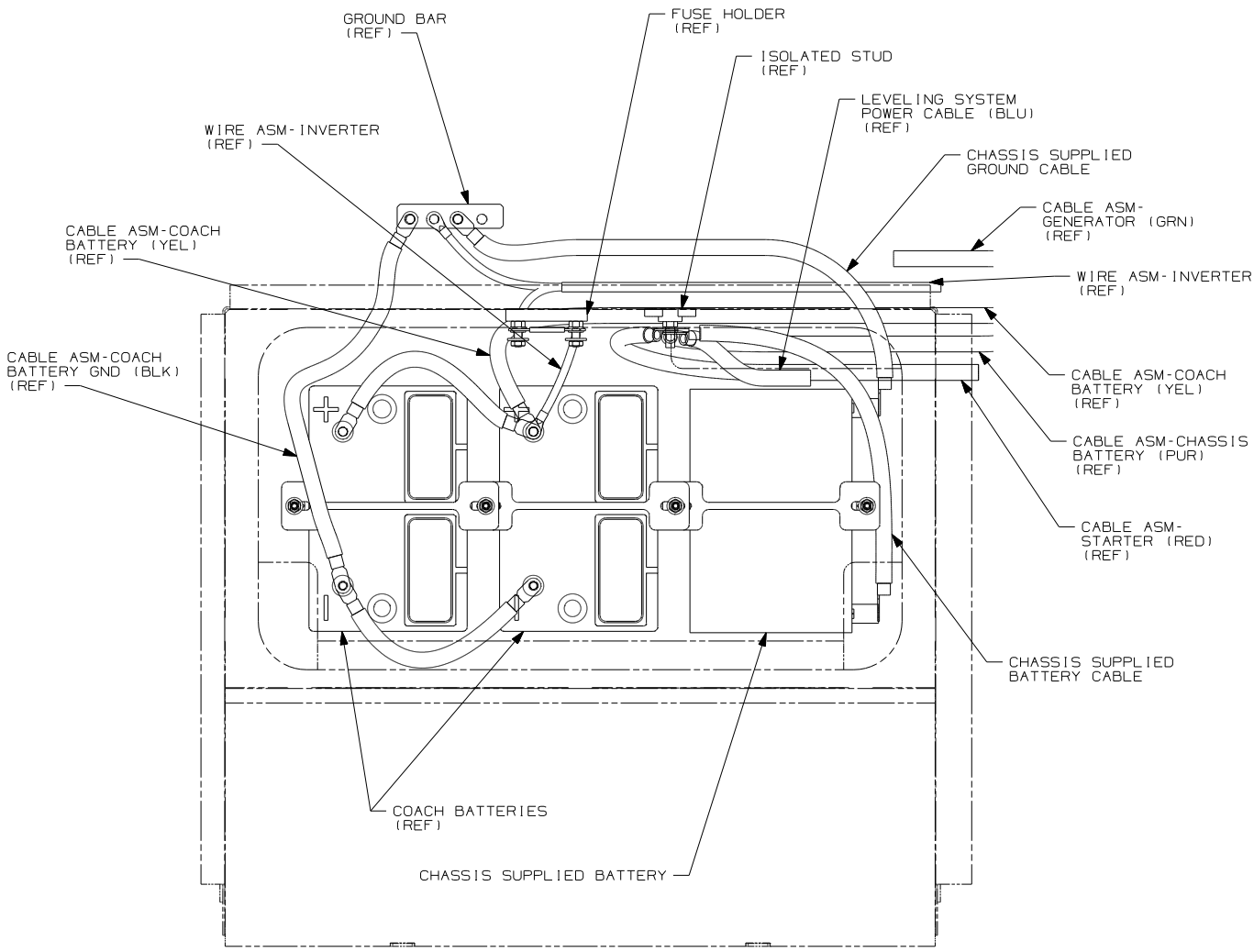
SHEET 4 PART NO 161513 REV

1 6/6/2007

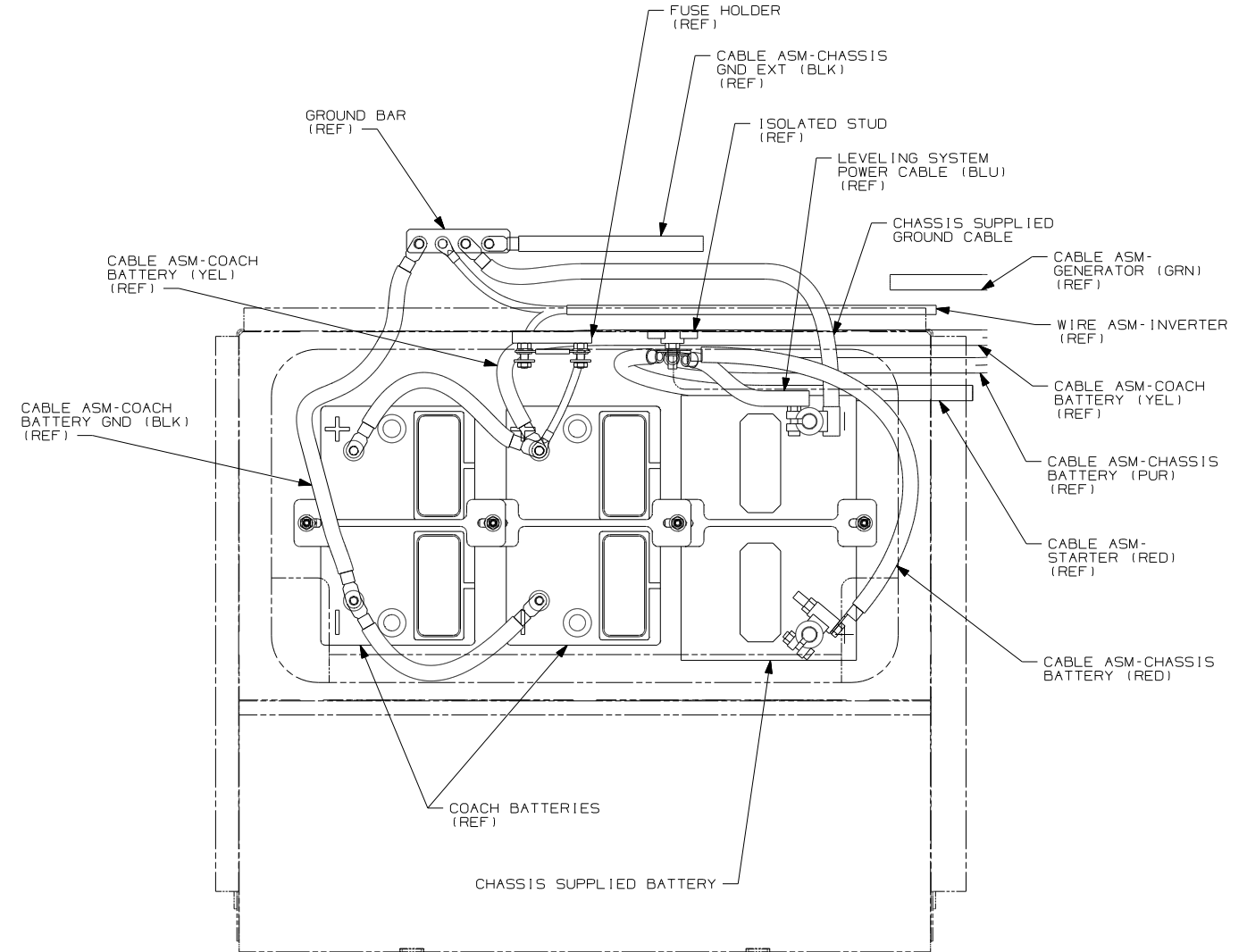
FOR ELECTRICAL TORQUE SPECIFICATIONS SEE DWG NO. 128783-01-000

X-X

FOR ELECTRICAL CALLOUTS SEE DWG NO. 121339-01-000



VIEW EA
(WORKHORSE)



VIEW EB
(FORD)

FIRST USED		08 F&G-SERIES	
DO NOT SCALE DRAWING			
TITLE:			
BATTERY INSTL			
SHEET 5	PART NO	161513	REV