



DANGER

Danger of electrical shock, burns or death. Always remove all power sources before attempting any repair, service or diagnostic work. Power can be present from shore power, generator, inverter or battery. All power sources must be disabled and secured before performing any service.

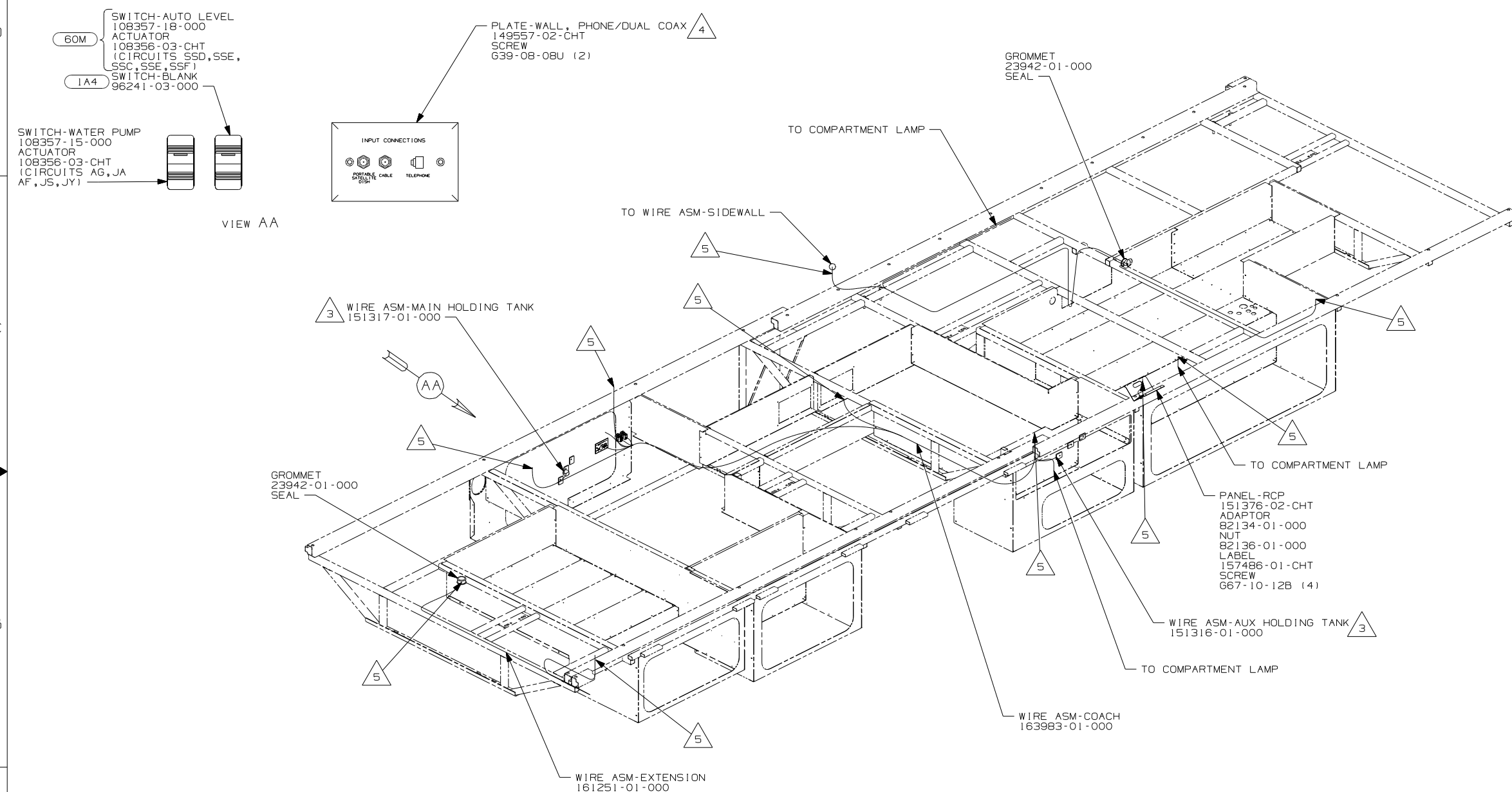


CAUTION

If you lack the skills, tools or equipment to perform diagnostic or repair work leave such work to an authorized Winnebago Industries dealer or other qualified shop.

DRAWING NO.	FEATURE
163927-01	(WIN)
163927-02	(ITA)

RELEASE	REV/DATE	DWG NO
	A	163927
REV ZONE	REVISION RECORD	DATE
		DFTR-ORIG



- (1A4) LEVELING JACK WITHOUT
- (60M) HYDRAULIC LEVEL JACKS-AUTO
- (WIN) WINNEBAGO ONLY
- (ITA) ITASCA ONLY
- (265) CODES/STANDARDS-CSA/CMVSS
- (1B1) CODES/STANDARDS USA

(1B1) (265)

WINNEBAGO COPYRIGHT 2006 WINNEBAGO INDUSTRIES, INC.

DFTR	ORIG. DATE
CHKR	ALL DIMENSIONS ARE IN MILLIMETERS
P.E.	
M.E.	FIRST USED
DSNR	08 D35J

UNSPECIFIED TOLERANCES ARE: MATERIAL:

WHOLE DIM (X) :
ONE-PLACE (X.X) :
TWO-PLACE (X.XX) :
ANGLE :

THIRD ANGLE PROJECTION

DO NOT SCALE DRAWING

TITLE: WIRING INSTL-BODY, 12V

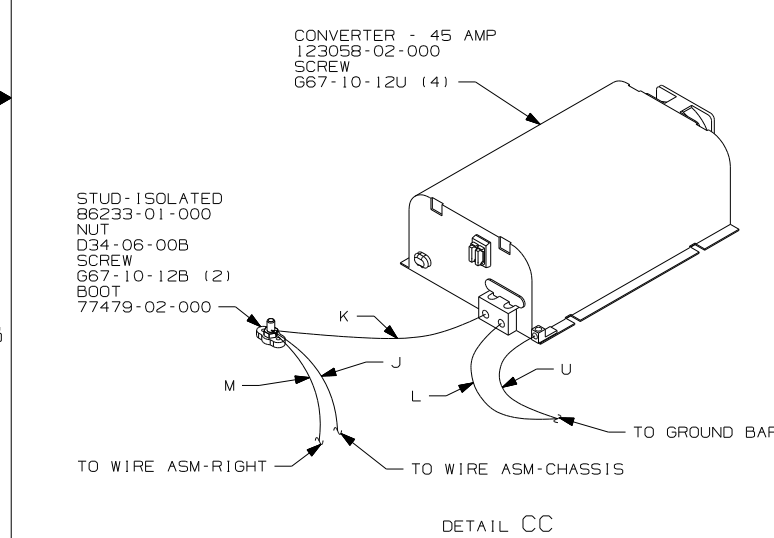
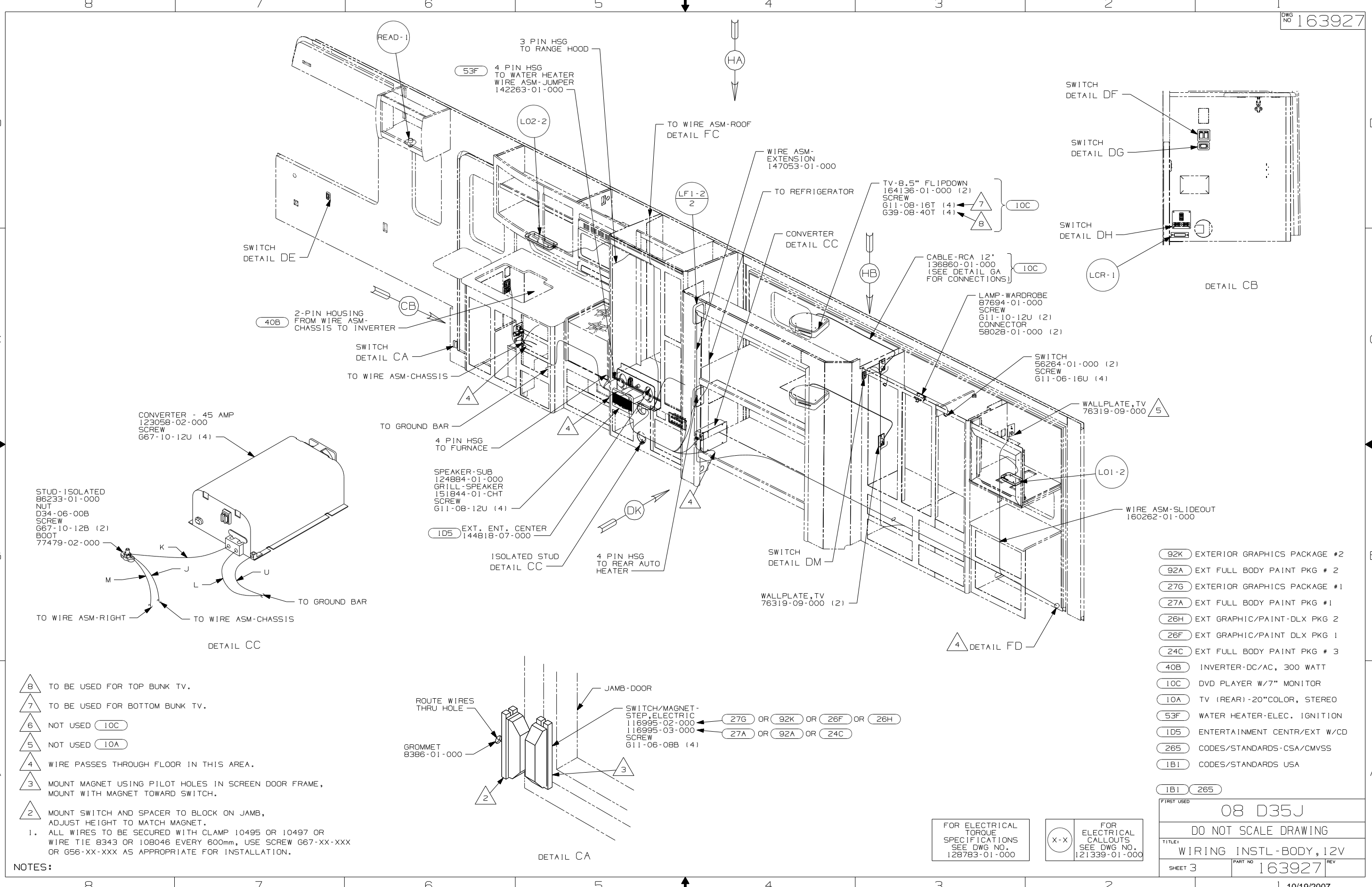
SHEET 1 OF 8 PART NO 163927 REV

REF: 1 10/19/2007

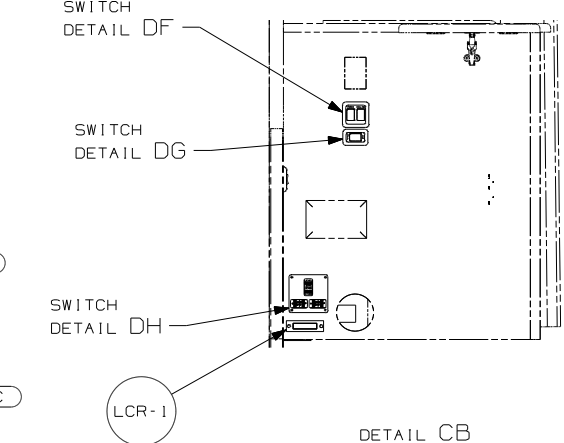
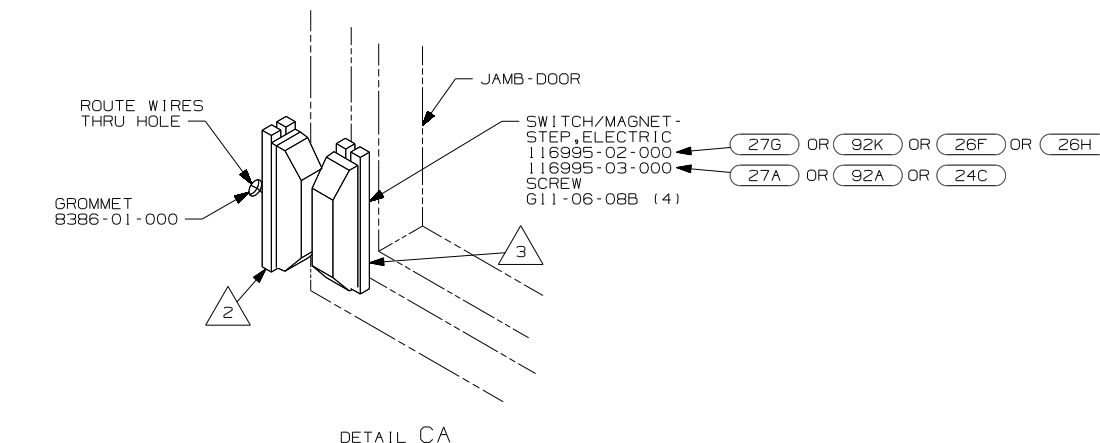
- (5) WIRE PASSES THROUGH FLOOR IN THIS AREA.
- (4) CONNECT TELEPHONE WIRES TO MATCHING COLORS ON PLATE-WALL, PHONE/DUAL COAX.
- (3) PLACE CROSS LOCATOR ON SENSOR OVER DIMPLES ON TANK.
- ROUTE TANK SENSOR WIRES SO THEY DO NOT PASS OVER SENSORS. USE WIRE TIE MOUNT 155366-01-000 AND WIRE TIE 8343-01-000 AS NEEDED. TANK SURFACE MUST BE CLEANED USING ISOPROPYL ALCOHOL AND PRIMED WITH PRIMER 94.
 - ALL WIRES TO BE SECURED WITH CLAMP10495 OR 10497 OR WIRE TIE 8343 OR 108046 EVERY 600mm, USE SCREW 667-XX-XXX OR 656-XX-XXX AS APPROPRIATE FOR INSTALLATION.

FOR ELECTRICAL TORQUE SPECIFICATIONS SEE DWG NO. 128783-01-000

(X-X) FOR ELECTRICAL CALLOUTS SEE DWG NO. 121339-01-000



- NOTES:
- △ 8 TO BE USED FOR TOP BUNK TV.
 - △ 7 TO BE USED FOR BOTTOM BUNK TV.
 - △ 6 NOT USED (10C)
 - △ 5 NOT USED (10A)
 - △ 4 WIRE PASSES THROUGH FLOOR IN THIS AREA.
 - △ 3 MOUNT MAGNET USING PILOT HOLES IN SCREEN DOOR FRAME, MOUNT WITH MAGNET TOWARD SWITCH.
 - △ 2 MOUNT SWITCH AND SPACER TO BLOCK ON JAMB, ADJUST HEIGHT TO MATCH MAGNET.
1. ALL WIRES TO BE SECURED WITH CLAMP 10495 OR 10497 OR WIRE TIE 8343 OR 108046 EVERY 600mm, USE SCREW 667-XX-XXX OR G56-XX-XXX AS APPROPRIATE FOR INSTALLATION.

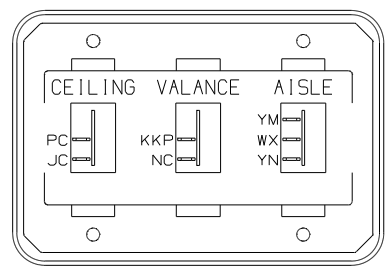


- (92K) EXTERIOR GRAPHICS PACKAGE #2
- (92A) EXT FULL BODY PAINT PKG # 2
- (27G) EXTERIOR GRAPHICS PACKAGE #1
- (27A) EXT FULL BODY PAINT PKG #1
- (26H) EXT GRAPHIC/PAINT-DLX PKG 2
- (26F) EXT GRAPHIC/PAINT DLX PKG 1
- (24C) EXT FULL BODY PAINT PKG # 3
- (40B) INVERTER-DC/AC, 300 WATT
- (10C) DVD PLAYER W/7\"/>

FOR ELECTRICAL TORQUE SPECIFICATIONS SEE DWG NO. 128783-01-000

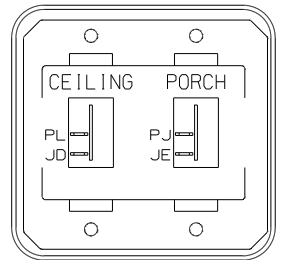
(X-X) FOR ELECTRICAL CALLOUTS SEE DWG NO. 121339-01-000

FIRST USED	08 D35J
TITLE	DO NOT SCALE DRAWING
	WIRING INSTL-BODY, 12V
SHEET 3	PART NO 163927 REV



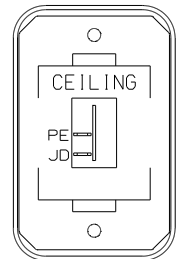
SWITCH-ROCKER
135740-01-CHT (2)
135740-02-CHT
SWITCH-BASE
135741-03-CHT
SWITCH-BEZEL
135742-22-CHT
SCREW
G11-08-08U (4)

DETAIL DA



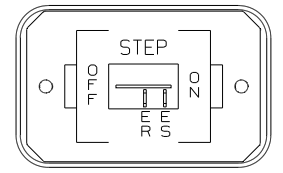
SWITCH-ROCKER
135740-01-CHT (2)
SWITCH-BASE
135741-02-CHT
SWITCH-BEZEL
135742-19-CHT
SCREW
G11-08-08U (4)

DETAIL DF



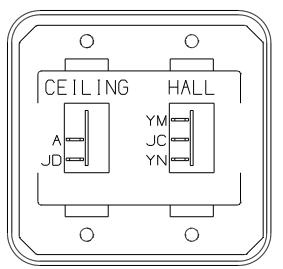
SWITCH-ROCKER
135740-01-CHT
SWITCH-BASE
135741-01-CHT
SWITCH-BEZEL
135742-07-CHT
SCREW
G11-08-08U (2)

DETAIL DB



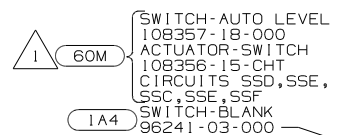
SWITCH-ROCKER
135740-01-CHT
SWITCH-BASE
135741-01-CHT
SWITCH-BEZEL
135742-11-CHT
SCREW
G11-08-08U (2)

DETAIL DG



SWITCH-ROCKER
135740-01-CHT
135740-02-CHT
SWITCH-BASE
135741-02-CHT
SWITCH-BEZEL
135742-16-CHT
SCREW
G11-08-08U (4)

DETAIL DC



SWITCH-AUTO LEVEL
108357-18-000
ACTUATOR-SWITCH
108356-15-CHT
CIRCUITS SSD,SSE,
SSC,SSE,SSF
SWITCH-BLANK
96241-03-000

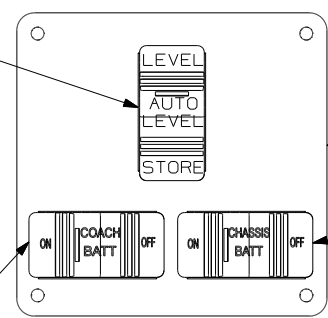
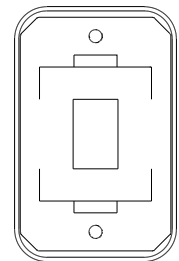


PLATE-SWITCH
158431-08-CHT
SCREW
G11-06-10U (4)

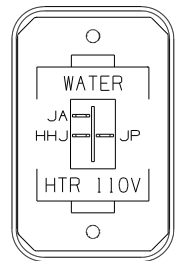
SWITCH-CHASSIS BATT
108357-17-000
ACTUATOR-SWITCH
108356-20-CHT
CIRCUITS UUC,TTY,UUB,
UUB,TTZ,UUC,UUC,UUA

DETAIL DH



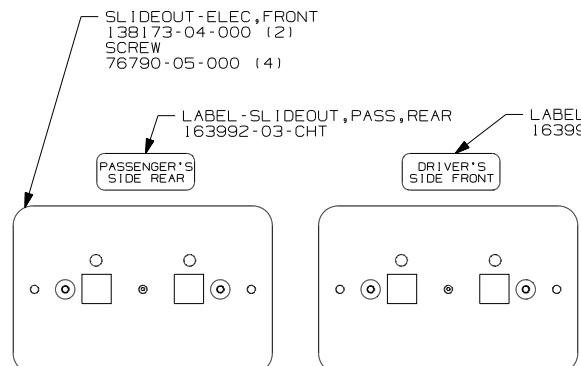
SWITCH-BLANK
138253-01-CHT
SWITCH-BASE
135741-01-CHT
SWITCH-BEZEL
135742-01-CHT
SCREW
G11-08-08U (2)

DETAIL DD (53F)



SWITCH-ROCKER
135740-06-CHT
SWITCH-BASE
135741-01-CHT
SWITCH-BEZEL
135742-35-CHT
SCREW
G11-08-08U (2)

DETAIL DD (53Z)



SLIDEOUT-ELEC, FRONT
138173-04-000 (2)
SCREW
76790-05-000 (4)

LABEL-SLIDEOUT, PASS, REAR
163992-03-CHT

LABEL-SLIDEOUT, DRIVER, FRONT
163992-01-CHT

PASSENGER'S
SIDE REAR

DRIVER'S
SIDE FRONT

WARNING

UNDERSTAND OPERATOR'S MANUAL BEFORE USING. KEEP PEOPLE AND OBSTRUCTIONS CLEAR OF SLIDEOUT ROOM WHEN OPERATING TO AVOID INJURY AND/OR PROPERTY DAMAGE.

CONNECT TO 6-PIN HOUSING WITH CIRCUITS DS, DU, GGD, GGE, DR, GGF.

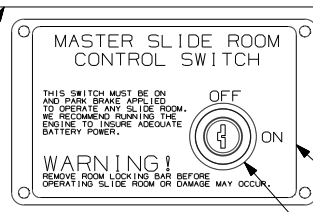


PLATE-KEY, SLIDE ROOM
163987-01-CHT
SCREW
76790-05-000 (4)

LABEL-SLIDROOM CONTROL, MAN
163988-01-CHT

DETAIL DN

SWITCH-KEY, SPST-ILLINOIS LCK
163097-01-000
(CONNECTS TO CIRCUITS DY & DDJ)

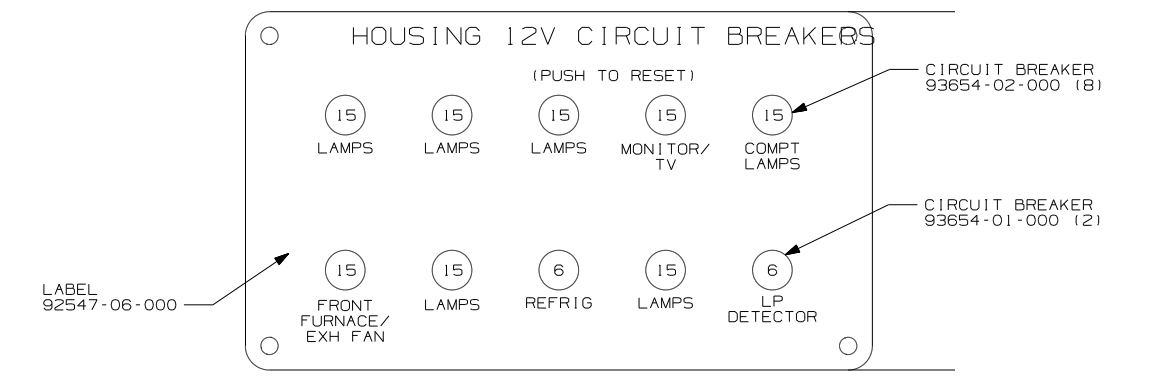
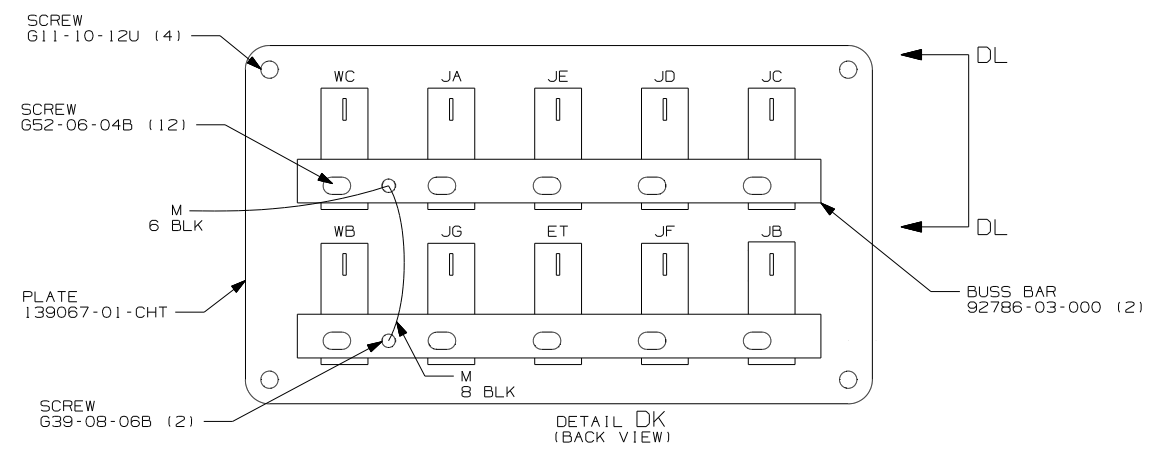
CONNECT TO 6-PIN HOUSING WITH CIRCUITS LLY, LLZ, MMA, MMB, MMC, MMD.

LABEL-WARNING, SLIDEOUT
116549-01-000

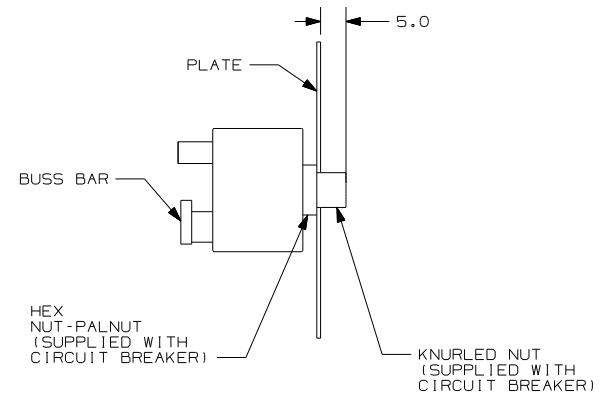
SWITCH-ROCKER
135740-01-CHT
SWITCH-BASE
135741-01-CHT
SWITCH-BEZEL
135742-01-CHT
SCREW
G11-08-08U (2)

YEL-1
YEL-2

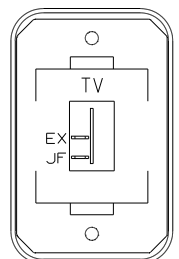
DETAIL DE



DETAIL DK (FRONT VIEW)

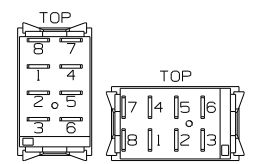


DETAIL DL



SWITCH-ROCKER
135740-01-CHT
SWITCH-BASE
135741-01-CHT
SWITCH-BEZEL
135742-45-CHT
SCREW
G11-08-08U (2)

DETAIL DM



DETAIL DJ

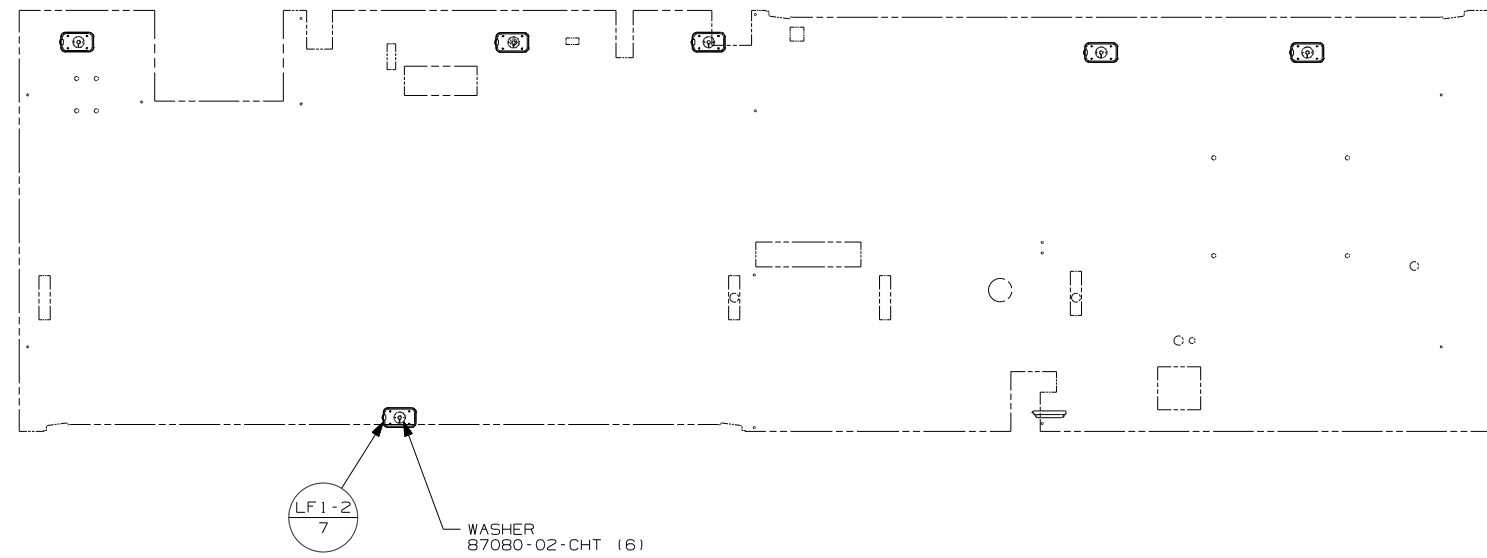
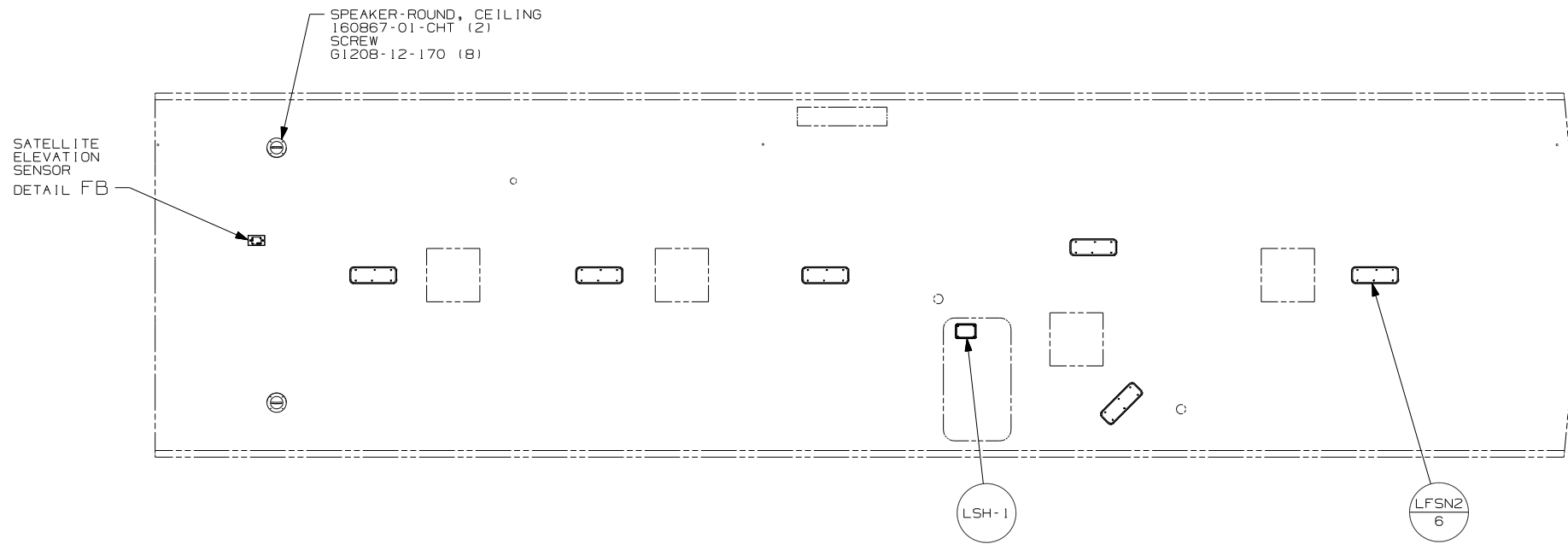
- (53F) WATER HEATER-ELEC. IGNITION
- (10C) DVD PLAYER W/7" MONITOR
- (1A4) LEVELING JACK WITHOUT
- (60M) HYDRAULIC LEVEL JACKS-AUTO
- (53Z) WTR HTR-66AL/110/LP/MTR/AUTO
- (265) CODES/STANDARDS-CSA/CMVSS
- (1B1) CODES/STANDARDS USA

FOR ELECTRICAL TORQUE SPECIFICATIONS SEE DWG NO. 128783-01-000

FOR ELECTRICAL CALLOUTS SEE DWG NO. 121339-01-000

NOTES:
1 FOR SWITCH ORIENTATION SEE DETAIL DJ

FIRST USED	08 D35J
TITLE:	DO NOT SCALE DRAWING
	WIRING INSTL-BODY, 12V
SHEET 4	PART NO 163927 REV
	10/19/2007

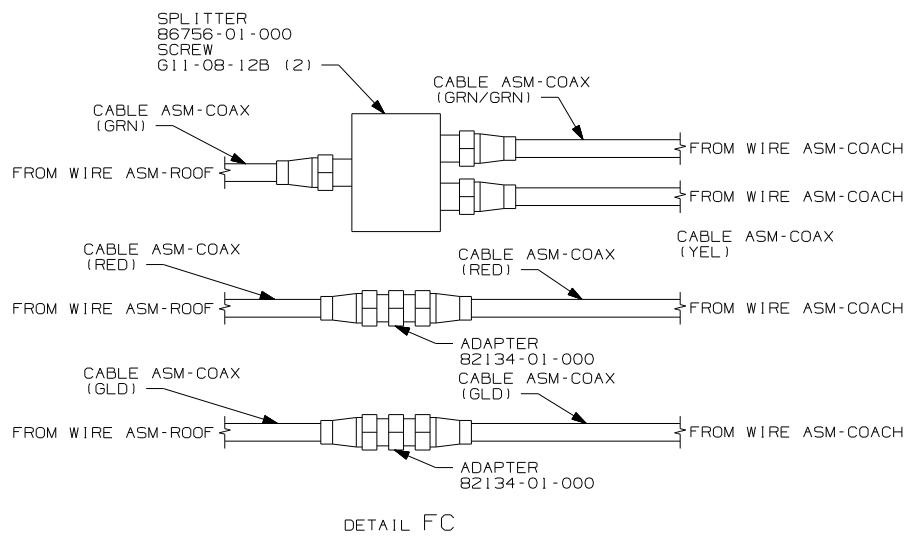
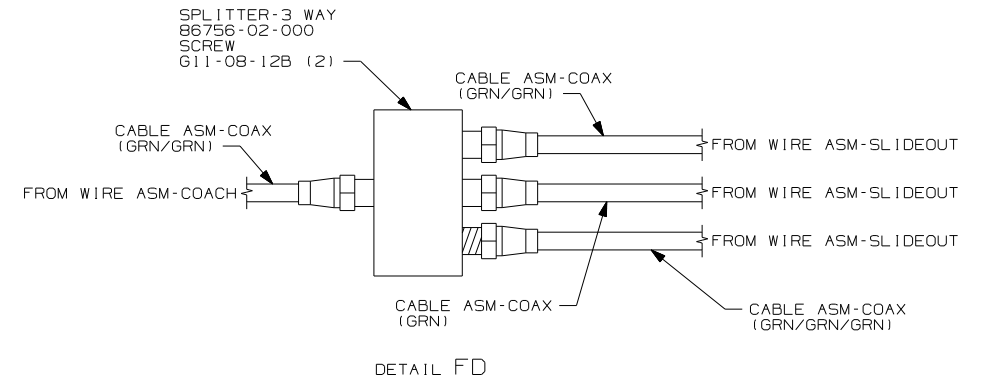
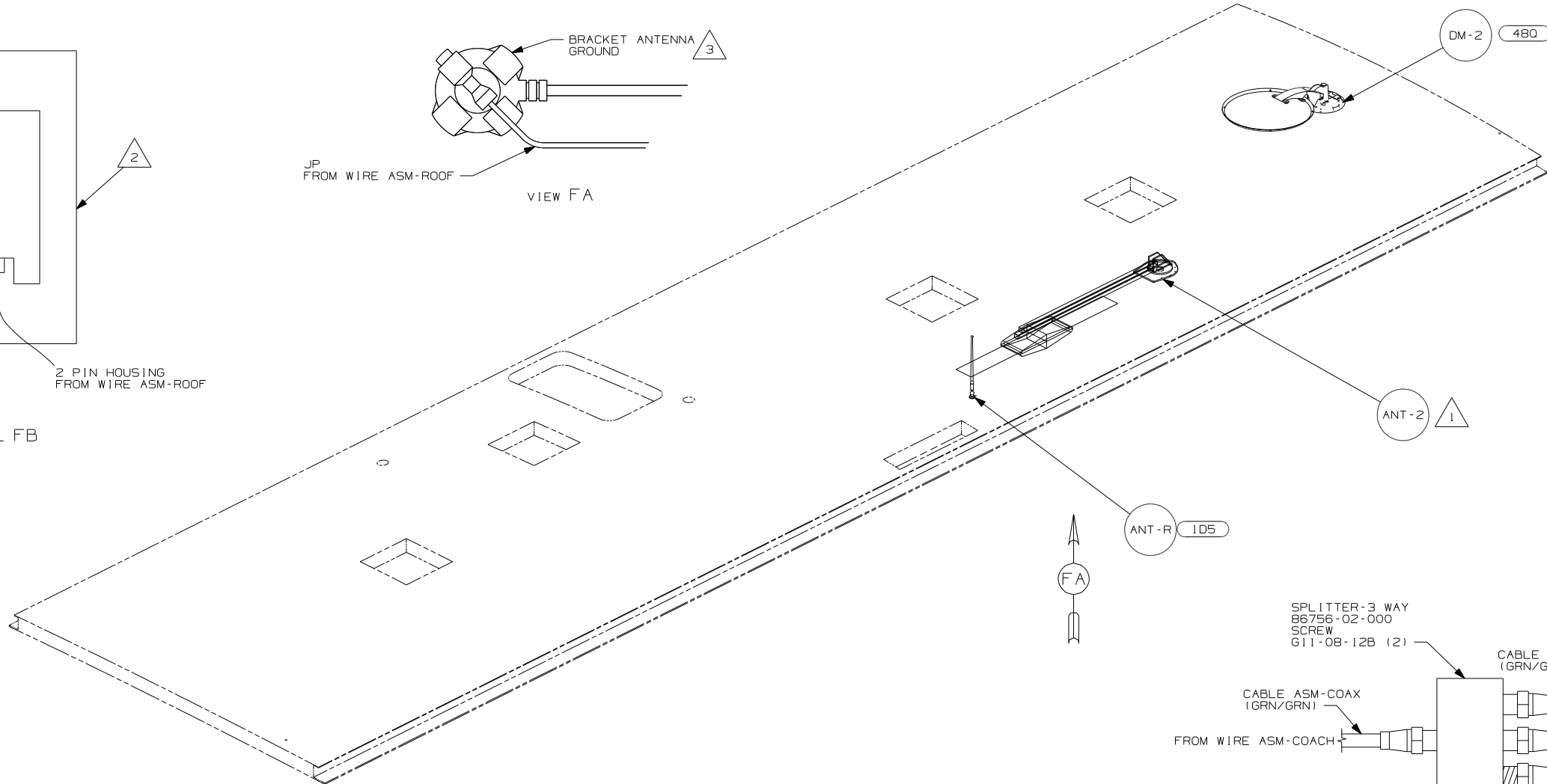
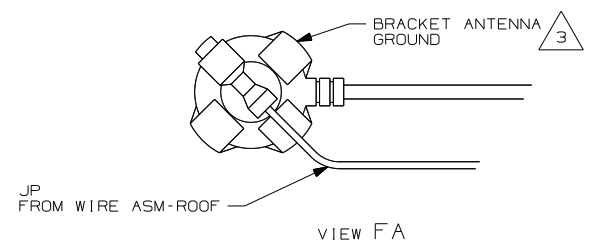
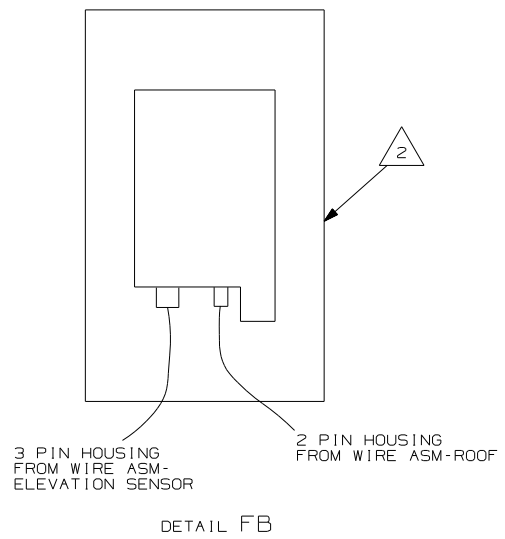


265 CODES/STANDARDS-CSA/CMVSS
 1B1 CODES/STANDARDS USA

FIRST USED	
08 D35J	
DO NOT SCALE DRAWING	
TITLE: WIRING INSTL-BODY, 12V	
SHEET 5	PART NO 163927 REV

FOR ELECTRICAL TORQUE SPECIFICATIONS SEE DWG NO. 128783-01-000

X-X FOR ELECTRICAL CALLOUTS SEE DWG NO. 121339-01-000



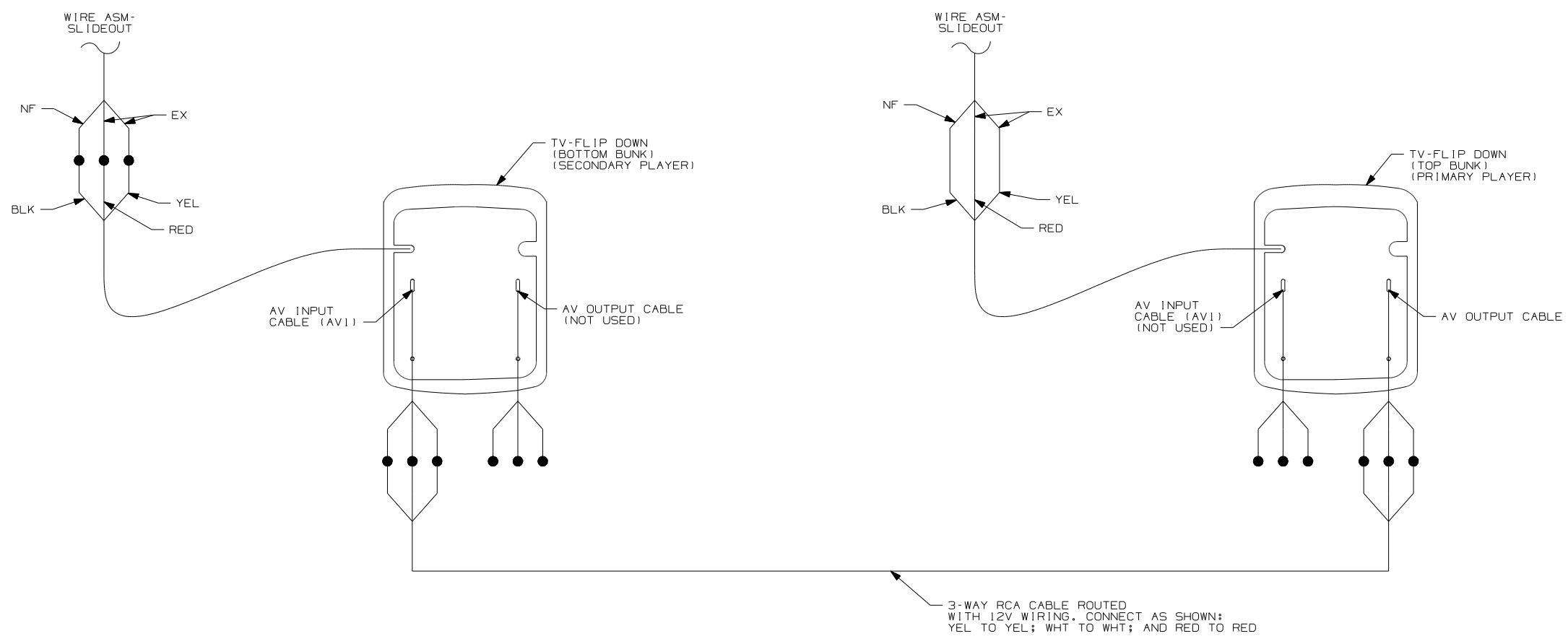
- NOTES:
- △ 4 CONNECT THE ORANGE COAX FROM ROOF ASM TO ONE OF THE 2 GRAY COAX CABLES ON THE SATELLITE DISH, THE OTHER GRAY COAX IS NOT USED.
 - △ 3 WRAP LEGS AROUND ANTENNA BASE.
 - △ 2 SENSOR SUPPLIED WITH SATELLITE ASSEMBLY.
 - △ 1 SEE DWG 76319-01-000 FOR INSTALLATION INSTRUCTIONS.

- 480 SATELLITE DISH & ELEV.SENSOR
- 1D5 ENTERTAINMENT CENTR/EXT W/CD
- 265 CODES/STANDARDS-CSA/CMVSS
- 1B1 CODES/STANDARDS USA

FOR ELECTRICAL TORQUE SPECIFICATIONS SEE DWG NO. 128783-01-000

FOR ELECTRICAL CALLOUTS SEE DWG NO. 121339-01-000

FIRST USED	08 D35J
DO NOT SCALE DRAWING	
TITLE:	WIRING INSTL-BODY, 12V
SHEET 6	PART NO 163927 REV



DETAIL GA 10C

- 6 SUPPLIED WITH FLIP DOWN TV.
- 5 REMOVE SHIPPING RESTRAINT SCREWS FROM DVD PLAYER.
- 4 SUPPLIED WITH DVD PLAYER.
- 3 REMOTE IR RECEIVER SUPPLIED WITH DVD PLAYER. TO BE MOUNTED IN BOTTOM BUNK.
- 2 RCA A/V CABLE SUPPLIED WITH DVD PLAYER
- 1 COAX IS PART OF WIRE-ASM SLIDEOUT

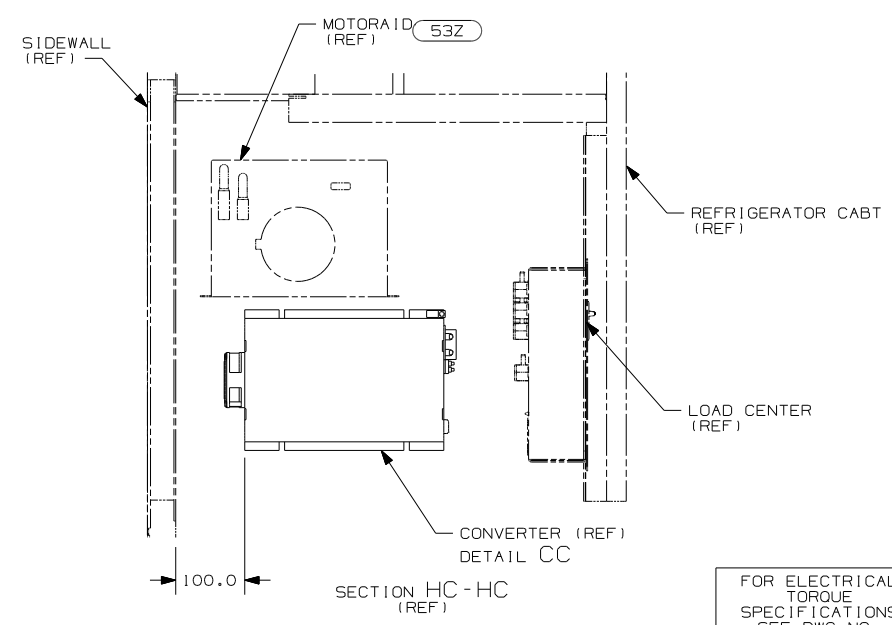
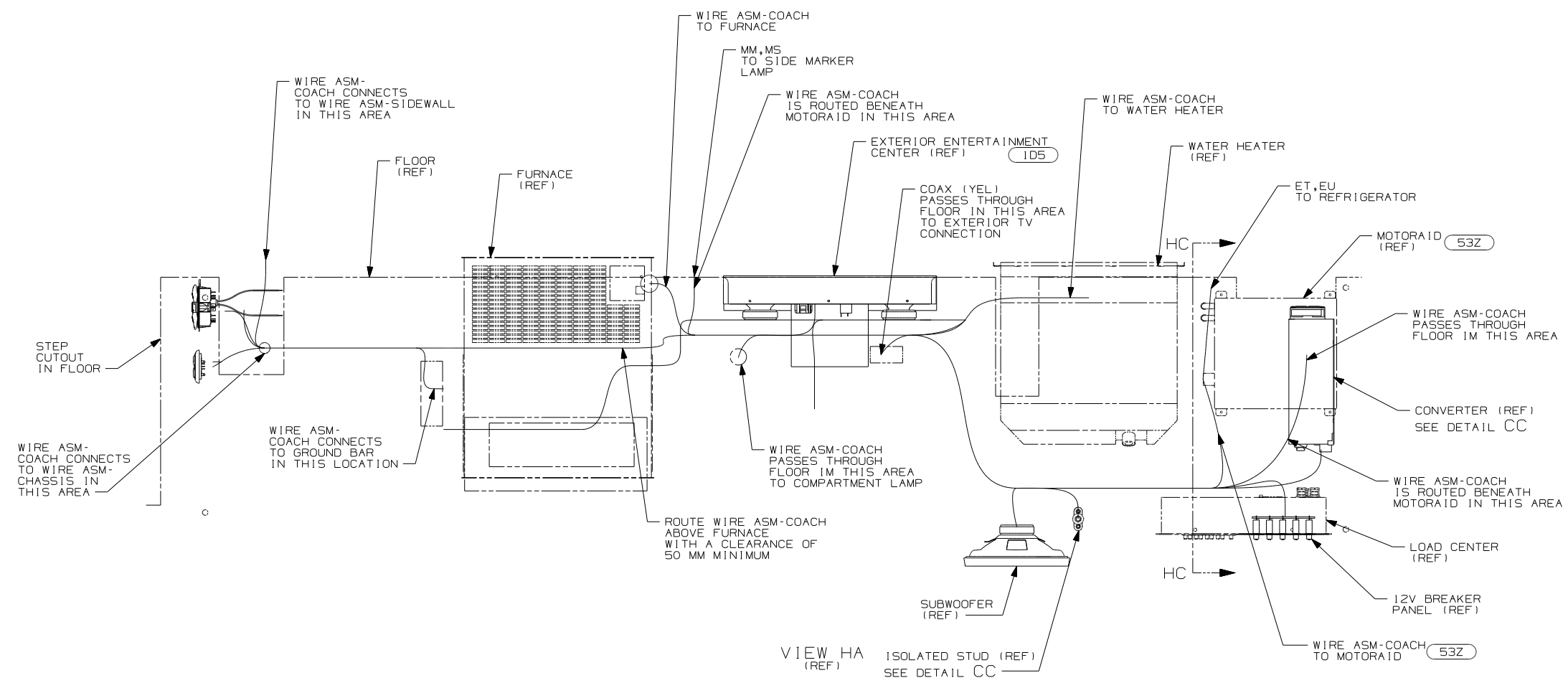
NOTES:

- 10C DVD PLAYER W/7" MONITOR
- 265 CODES/STANDARDS-CSA/CMVSS
- 1B1 CODES/STANDARDS USA

1B1 265

X-X FOR ELECTRICAL CALLOUTS SEE DWG NO. 121339-01-000

FIRST USED	08 D35J
TITLE:	DO NOT SCALE DRAWING
	WIRING INSTL-BODY, 12V
SHEET 7	PART NO 163927 REV



1. ALL WIRES TO BE SECURED WITH CLAMP 10495 OR 10497 OR WIRE TIE 8343 OR 104046 EVERY 600MM, USE SCREW G64-XX-XXX OR G56-XX-XXX AS APPROPRIATE FOR INSTALLATION.

NOTES:

FOR ELECTRICAL TORQUE SPECIFICATIONS SEE DWG NO. 128783-01-000

FOR ELECTRICAL CALLOUTS SEE DWG NO. 121339-01-000

- 53Z WTR HTR-6GAL/110/LP/MTR/AUTO
- ID5 ENTERTAINMENT CENTR/EXT W/CD
- 265 CODES/STANDARDS-CSA/CMVSS
- 1B1 CODES/STANDARDS USA

FIRST USED	08 D35J
DO NOT SCALE DRAWING	
TITLE:	WIRING INSTL-BODY, 12V
SHEET 8	PART NO 163927 REV