



**DANGER**

**Danger of electrical shock, burns or death.** Always remove all power sources before attempting any repair, service or diagnostic work. Power can be present from shore power, generator, inverter or battery. All power sources must be disabled and secured before performing any service.



**CAUTION**

If you lack the skills, tools or equipment to perform diagnostic or repair work leave such work to an authorized Winnebago Industries dealer or other qualified shop.

		D26P	D29R	D30B	D34M	D35J
RED	12-UL	136135-07-080	136135-07-045	136135-07-040	136135-07-041	136135-07-040
	12-CA	136136-07-080	136136-07-045	136136-07-040	136136-07-041	136136-07-040
YEL	14-UL	136131-05-025 <sup>4</sup>	136131-05-025	136131-05-035	136131-05-013	136131-05-012
	14-CA	136134-05-025 <sup>4</sup>	136134-05-025	136134-05-035	136134-05-013	136134-05-012
YEL-2	14-UL	-----	-----	-----	136131-13-026	136131-13-025
	14-CA	-----	-----	-----	136134-13-026	136134-13-025
BLK	14-UL	-----	-----	-----	136131-06-070 <sup>4</sup>	136131-06-045
	14-CA	-----	-----	-----	136134-06-070 <sup>4</sup>	136134-06-045
BLK	12-UL	136135-06-042	136135-06-023	136135-06-049	-----	-----
	12-CA	136136-06-042	136136-06-023	136136-06-049	-----	-----
BRN	14-UL	136131-03-100	136131-03-105 <sup>4</sup>	136131-03-132 <sup>4</sup>	136131-03-115 <sup>4</sup>	136131-03-155
	14-CA	136134-03-100	136134-03-105 <sup>4</sup>	136134-03-132 <sup>4</sup>	136134-03-115 <sup>4</sup>	136134-03-155
BLU	14-UL	136131-02-170	136131-02-156	136131-02-170	136131-02-140 <sup>4</sup>	136131-02-110
	14-CA	136134-02-170	136134-02-156	136134-02-170	136134-02-140 <sup>4</sup>	136134-02-110
MAIN	10-UL	136137-01-070	136137-01-060	136137-01-060	136137-01-060	136137-01-065
	10-CA	136138-01-070	136138-01-060	136138-01-060	136138-01-060	136138-01-065
GROUND	8-G	136145-01-012	136145-01-022	136145-02-025	136145-01-030	136145-01-035
GRN	12-UL	-----	-----	-----	136135-08-044	136135-08-036
	12-CA	-----	-----	-----	136136-08-044	136136-08-036
GRN-2	12-UL	-----	-----	-----	136135-14-063	136135-14-070
	12-CA	-----	-----	-----	136136-14-063	136136-14-070

		D26P	D29R	D30B	D34M	D35J
GRN-3	12-UL	-----	-----	-----	136135-18-014	136135-18-015
	12-CA	-----	-----	-----	136136-18-014	136136-18-015
PUR	14-UL	-----	-----	-----	136131-04-041	136131-04-175 <sup>4</sup>
	14-CA	-----	-----	-----	136134-04-041	136134-04-175 <sup>4</sup>
SLIDEOUT WIRE #1		136151-05-045 <sup>6</sup>	136152-06-049	136151-03-040 <sup>6</sup>	136151-06-029 <sup>5</sup>	136151-02-043 <sup>6</sup>
SLIDEOUT WIRE #2		136151-03-045 <sup>6</sup>	136151-03-032 <sup>5</sup>	-----	136151-03-024 <sup>5</sup>	136151-04-040 <sup>8</sup>
SLIDEOUT WIRE #3		136151-03-025 <sup>5</sup>	-----	-----	136151-02-029 <sup>5</sup>	-----
SLIDEOUT WIRE #4		-----	-----	-----	-----	136151-12-042 <sup>8</sup> (40B)
THROW IN WIRE #1	14-UL	136131-03-018 <sup>4</sup>	136131-02-010	-----	136131-02-025 <sup>4</sup>	136131-02-028 <sup>4</sup>
	14-CA	136134-03-018 <sup>4</sup>	136134-02-010	-----	136134-02-025 <sup>4</sup>	136134-02-028 <sup>4</sup>
THROW IN WIRE #2	14-UL	136131-03-035 <sup>4</sup>	-----	-----	136131-03-006 <sup>4</sup>	136131-04-085 <sup>4</sup>
	14-CA	136134-03-035 <sup>4</sup>	-----	-----	136134-03-006 <sup>4</sup>	136134-04-085 <sup>4</sup>
THROW IN WIRE #3	14-UL	136131-19-080	136131-03-065	136131-19-060	136131-04-085	136131-12-135 <sup>4</sup> (40B)
	14-CA	136134-19-080	136134-03-065	136134-19-060	136134-04-085	136134-12-135 <sup>4</sup> (40B)
THROW IN WIRE #4	14-UL	-----	136131-19-065	-----	136131-12-085	136131-12-025 <sup>4</sup> (40B)
	14-CA	-----	136134-19-065	-----	136134-12-085	136134-12-025 <sup>4</sup> (40B)
GENERATOR CABLE ASM	10-UL	-----	136137-01-032	-----	-----	-----
	10-CA	-----	136138-01-032	-----	-----	-----
WHT	12-UL	136135-09-021 <sup>7</sup>	136135-09-060 <sup>7</sup>	136135-09-060 <sup>7</sup>	136135-09-060	136135-09-016 (53Z)
	12-CA	136136-09-021 <sup>7</sup>	136136-09-060 <sup>7</sup>	136136-09-060 <sup>7</sup>	136136-09-060	136136-09-016 (53Z)
THROW IN FRONT TV	14-UL	136131-03-006	136131-03-006	136131-03-006	136131-04-006	136131-04-006 (42E OR 61E <sup>9</sup> )
	14-CA	136134-03-006	136134-03-006	136134-03-006	136134-04-006	136134-04-006 (42E OR 61E <sup>9</sup> )

- <sup>9</sup> (61E) REPLACES (42E) ON 10-1-07.
  - <sup>8</sup> SEE DETAIL EF FOR CONNECTOR INSTALLATION.
  - <sup>7</sup> SEE DETAIL EE FOR EMS INSTALLATION.
  - <sup>6</sup> SEE DETAIL ED FOR CONNECTOR INSTALLATION.
  - <sup>5</sup> SEE DETAIL EB FOR CONNECTOR INSTALLATION.
  - <sup>4</sup> SEE DETAIL EA FOR CONNECTOR INSTALLATION.
  - <sup>3</sup> SEE WIRING INSTL-BODY, 12V FOR ADDITIONAL INFORMATION.
  - <sup>2</sup> SECURE WIRES TO BACKSIDE OF LOAD CENTER WITH WIRE TIE 116673-01-000.
1. ALL GROUNDS WIRES TO BE COVERED WITH TUBING 8041-02-000.

NOTES:

- (61E) TV (FRONT)-26" COLOR STEREO
- (42E) TV-27" COLOR, STEREO W/REMOTE
- (40B) INVERTER-DC/AC, 300 WATT
- (53Z) WTR HTR-6GAL/110/LP/MTR/AUTO
- (29J) AC HEAT PUMP-1
- (250) A/C ROOF AIR (1) 14,800 BTU
- (12D) ELECTRICAL SYSTEM 30 AMP
- (265) CODES/STANDARDS-CSA/CMVSS
- (1B1) CODES/STANDARDS USA

FOR ELECTRICAL TORQUE SPECIFICATIONS SEE DWG NO. 128783-01-000

X-X FOR ELECTRICAL CALLOUTS SEE DWG NO. 121339-01-000

(1B1) (265) (12D) (250) (29J)

COPYRIGHT 2006 WINNEBAGO INDUSTRIES, INC.

DFTR	ORIG. DATE
CHKR	ALL DIMENSIONS ARE IN MILLIMETERS
P.E.	FIRST USED
M.E.	08 D-SERIES
DSNR	

UNSPECIFIED TOLERANCES ARE:  
 WHOLE DIM (X) : 3  
 ONE-PLACE (X.X) : 1.5  
 TWO-PLACE (X.XX) : 0.50  
 ANGLE : 1°

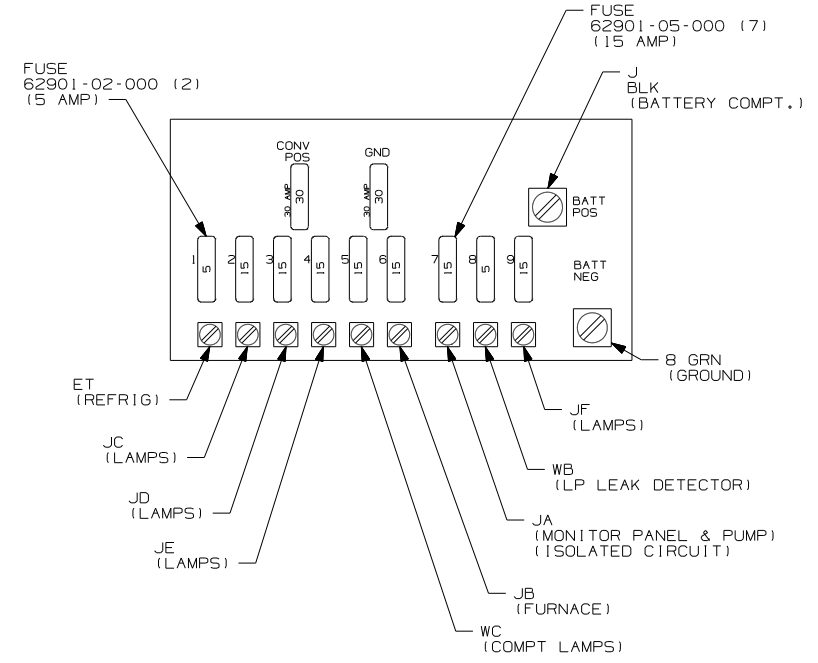
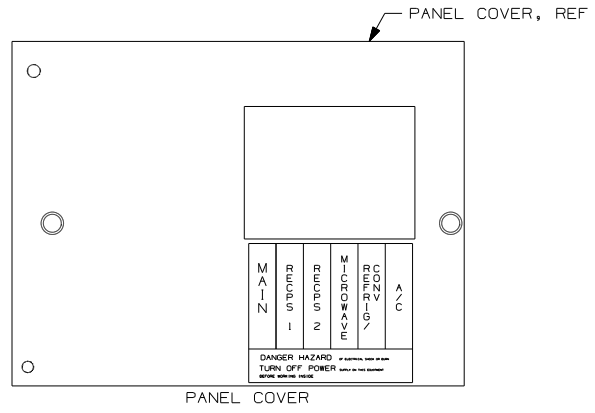
THIRD ANGLE PROJECTION

DO NOT SCALE DRAWING

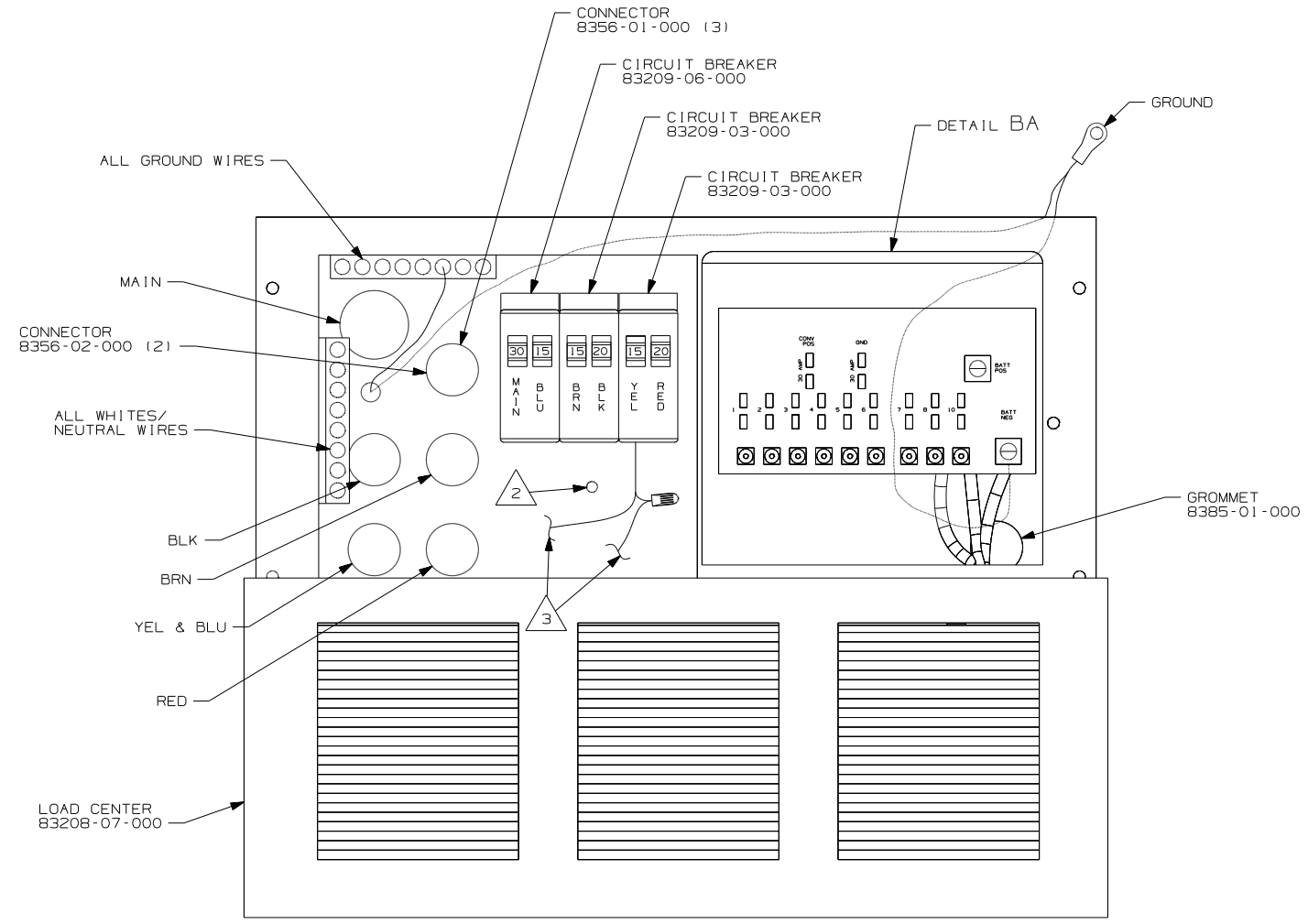
TITLE: LOAD CENTER/ATS ASM

SHEET 1 OF 5 PART NO 162640 REV

REF: 1 3/12/2008



DETAIL BA 250 29J



- 3 CONNECT CONVERTER POWER CIRCUIT INTO YELLOW BREAKER AND USE SUPPLIED WIRE NUT TO CONNECT YELLOW CIRCUIT.
- 2 SECURE WIRES TO BACKSIDE OF LOAD CENTER WITH WIRE TIE 116673-01-000.
1. ALL GROUNDS WIRES TO BE COVERED WITH TUBING 8041-02-000.

NOTES:

- 29J AC HEAT PUMP - 1
- 250 A/C ROOF AIR (1) 14,800 BTU
- 12D ELECTRICAL SYSTEM 30 AMP
- 265 CODES/STANDARDS-CSA/CMVSS
- 1B1 CODES/STANDARDS USA

1B1 265 12D 250 29J

FIRST USED 08 D-SERIES

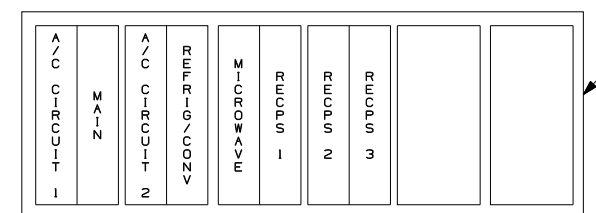
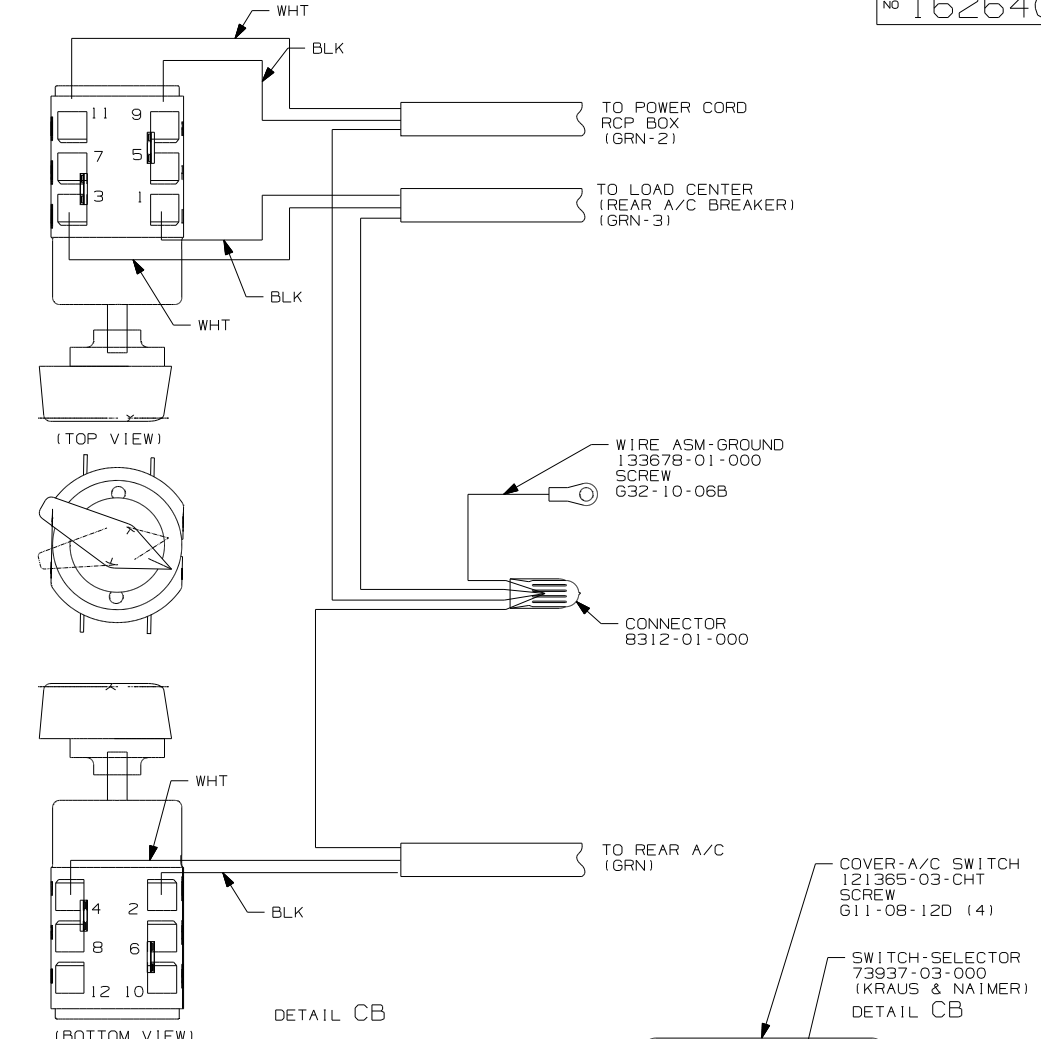
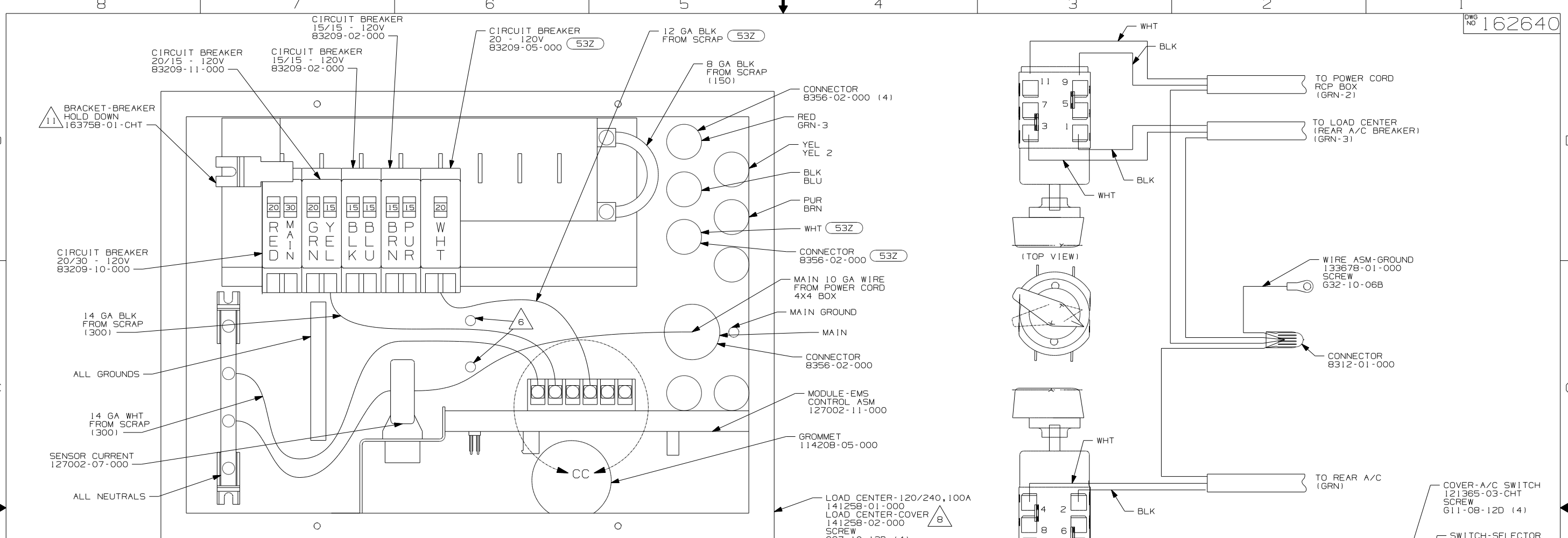
TITLE: DO NOT SCALE DRAWING

LOAD CENTER/ATS ASM

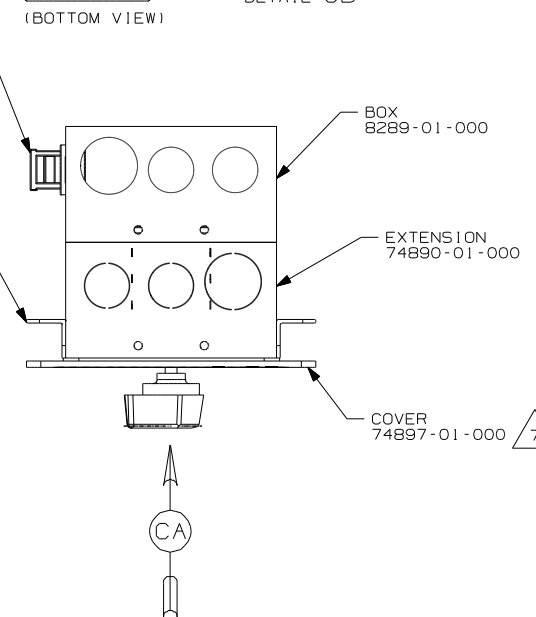
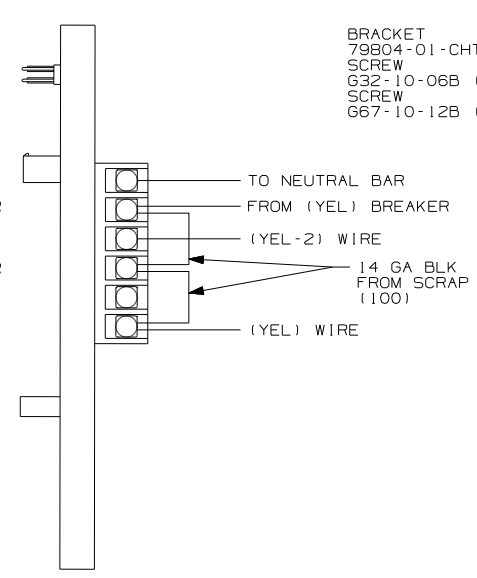
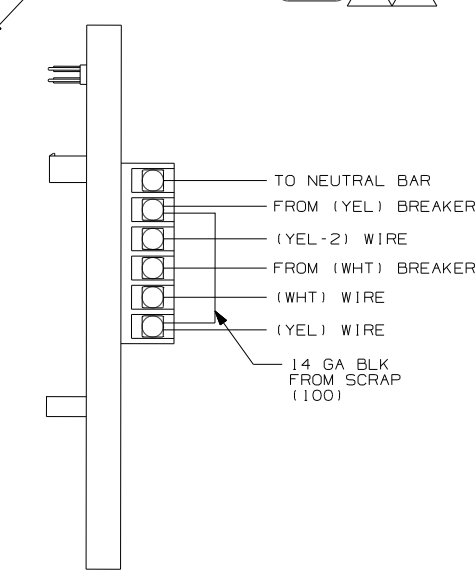
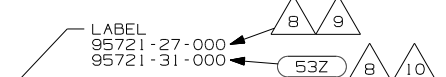
SHEET 2 PART NO 162640 REV

FOR ELECTRICAL TORQUE SPECIFICATIONS SEE DWG NO. 128783-01-000

FOR ELECTRICAL CALLOUTS SEE DWG NO. 121339-01-000



INSTALL LABEL ON FRONT COVER PLATE BELOW THE BREAKERS



REAR A/C SELECTOR SWITCH  
FOR ELECTRICAL TORQUE SPECIFICATIONS SEE DWG NO. 128783-01-000

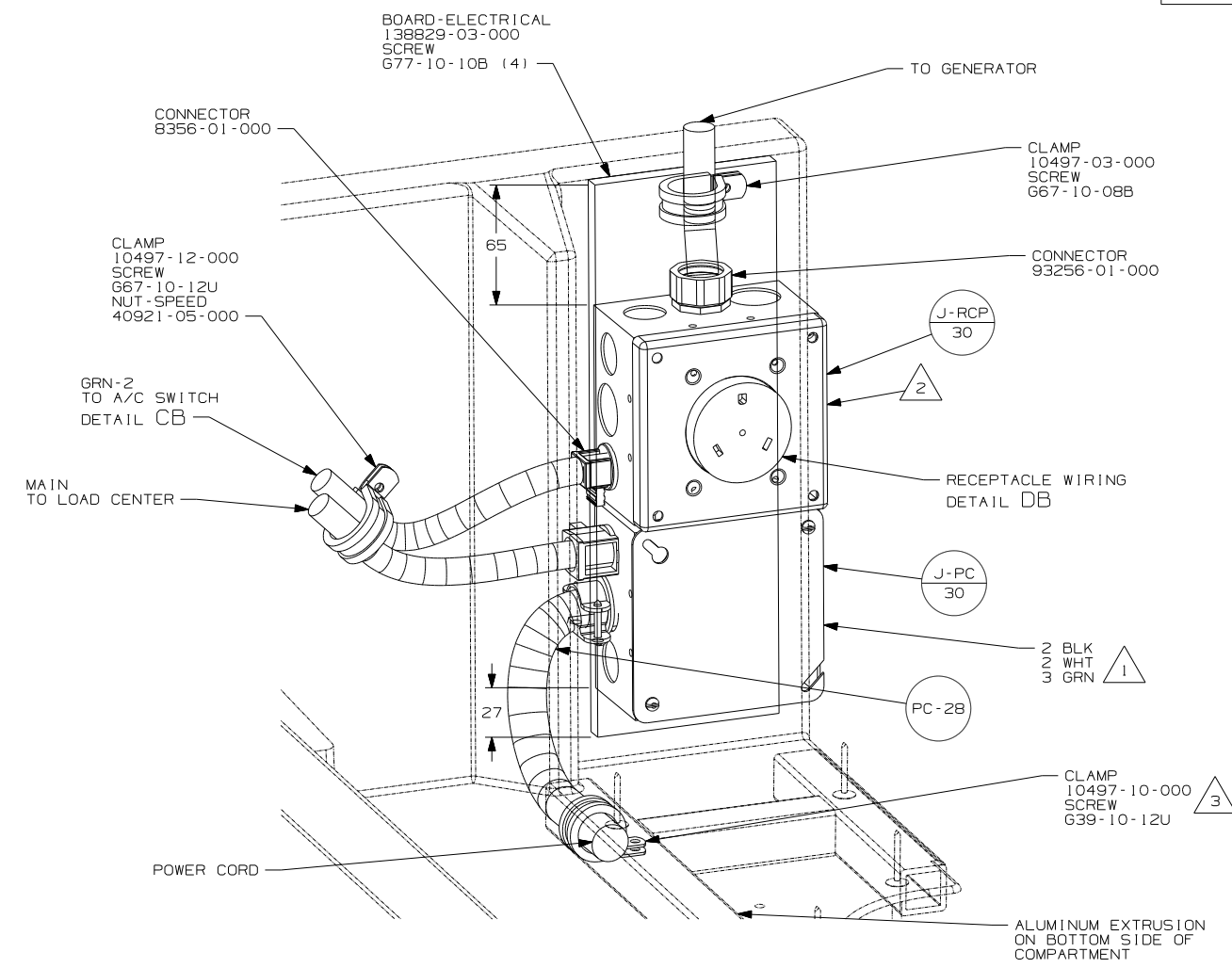
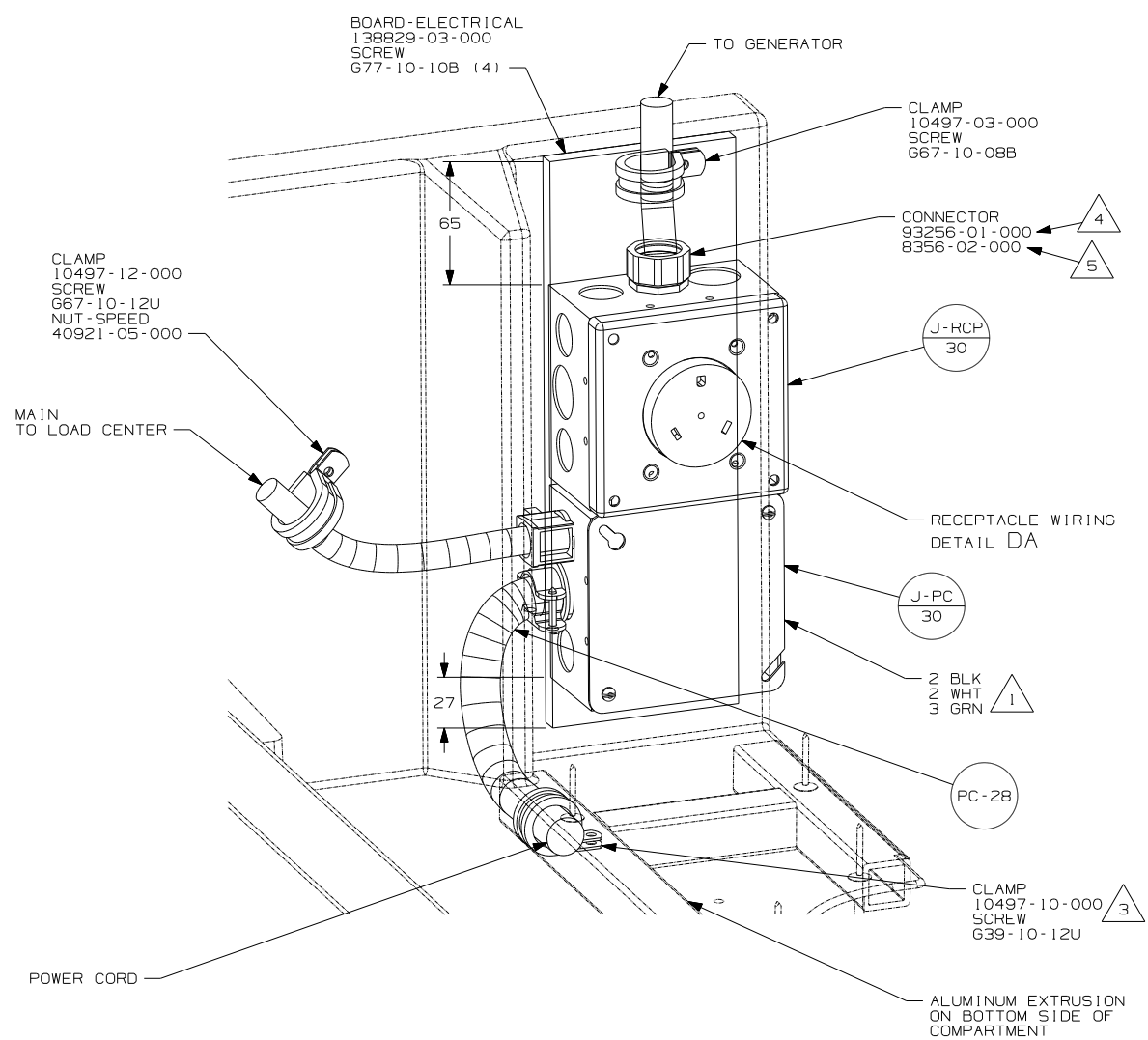
FOR ELECTRICAL CALLOUTS SEE DWG NO. 121339-01-000

- NOTES:
1. ALL GROUND WIRES TO BE COVERED WITH TUBING 8041-02-000.
  2. GROUND WIRES ARE NOT SHOWN FOR CLARITY.
  3. ALL WIRES TO BE CLAMPED WITHIN 200MM OF ATS.
  4. ALL 110V STRANDED WIRE W/O TERMINALS TO BE STRIPPED 10MM AND SOLDER DIPPED.
  5. REMOVE 400MM FROM OUTER JACKET ON ALL WIRES ENTERING LOAD CENTER AND TRIM INDIVIDUAL CONDUCTORS AS REQUIRED TO MAKE INTERNAL CONNECTIONS
  6. ATTACH WIRES TO BACKSIDE OF LOAD CENTER, USE EXISTING HOLES AND TIE-WIRE 116673-01-000.
  7. FASTEN SWITCH TO COVER BEFORE FASTENING COVER TO BOX.
  8. INSTALLED BY ASSEMBLY LINE.
  9. WITHOUT 53Z
  10. BLACKEN OUT 'WASHER DRYER' WITH BLACK MARKER.

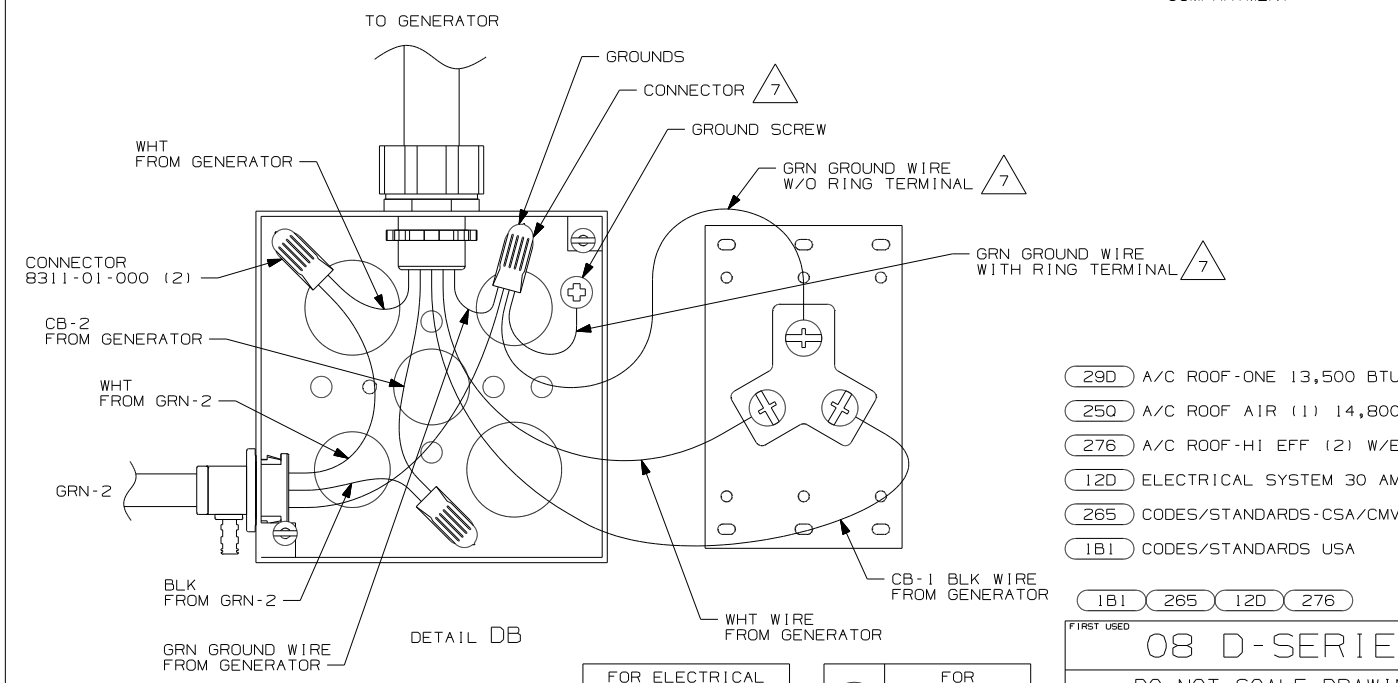
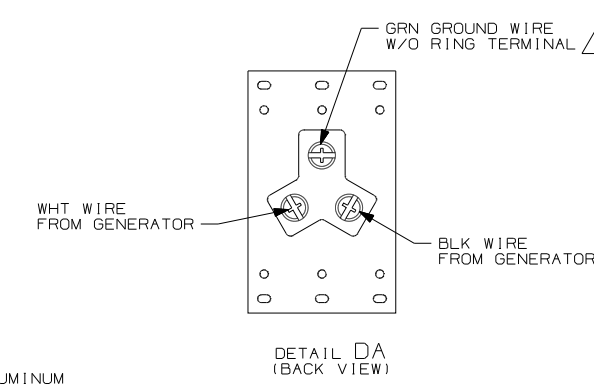
11. LOOSEN LEFT BUSS BAR MOUNTING SCREW, INSERT BRACKET-BREAKER HOLD DOWN UNDER SCREW, ORIENTATE BRACKET TOWARD MAIN BREAKER AS SHOWN AND TIGHTEN SCREW.

- 53Z WTR HTR-6GAL/110/LP/MTR/AUTO
- 29R AC HEAT PUMP-2 HI EFFICIENCY
- 276 A/C ROOF-HI EFF (2) W/EMS
- 12D ELECTRICAL SYSTEM 30 AMP
- 265 CODES/STANDARDS-CSA/CMVSS
- 1B1 CODES/STANDARDS USA

FIRST USED	08 D-SERIES
TITLE:	DO NOT SCALE DRAWING
	LOAD CENTER/ATS ASM
SHEET 3	PART NO 162640 REV



- NOTES:
- 7 PART OF J-RCP CALLOUT.
  - 6 CONNECT RECEPTACLE GROUND, BOX GROUND, AND GENERATOR GROUND TOGETHER WITH WIRE CONNECTOR.
  - 5 USED ON D29R ONLY.
  - 4 USED ON D26P & D30B ONLY.
  - 3 SCREW CLAMP ON TO THE FLOOR OF COMPARTMENT INTO THE ALUMINUM EXTRUSION ON BOTTOM SIDE OF COMPARTMENT.
  - 2 CONNECT CB-2 BLACK WIRE FROM GENERATOR TO BLACK OF GRN-2 WITH CONNECTOR 8311-01-000 AND WHITES TO WHITES AND GROUNDS TO GROUNDS.
  - 1 CONNECT BLACK TO BLACK, WHITE TO WHITE, AND GROUNDS TO GROUNDS.



250 29D

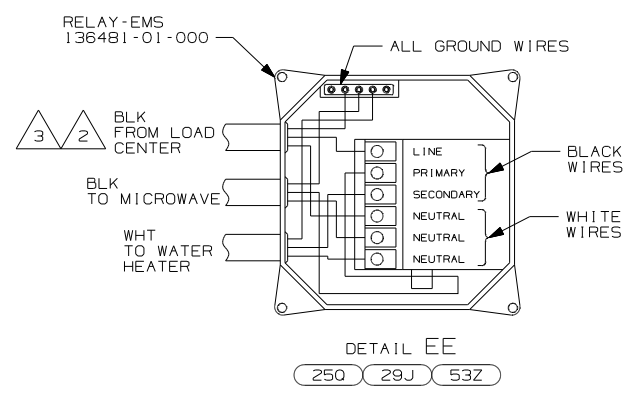
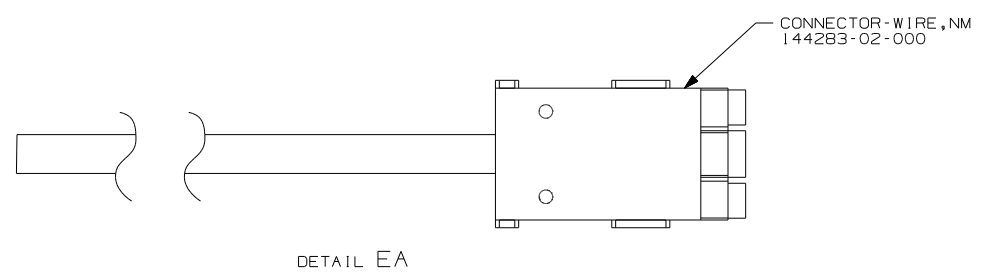
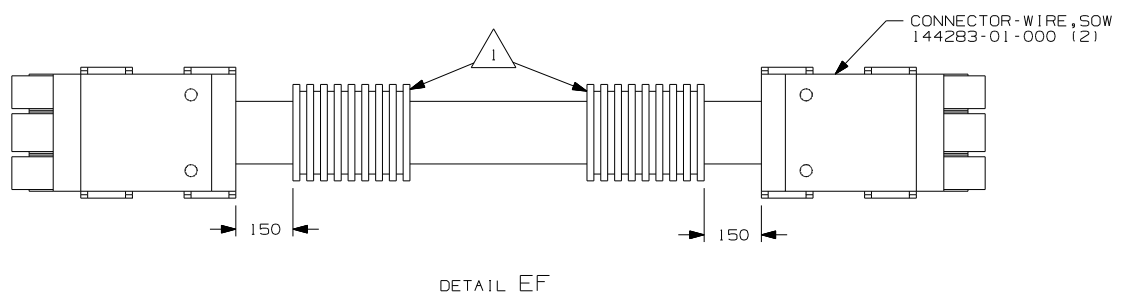
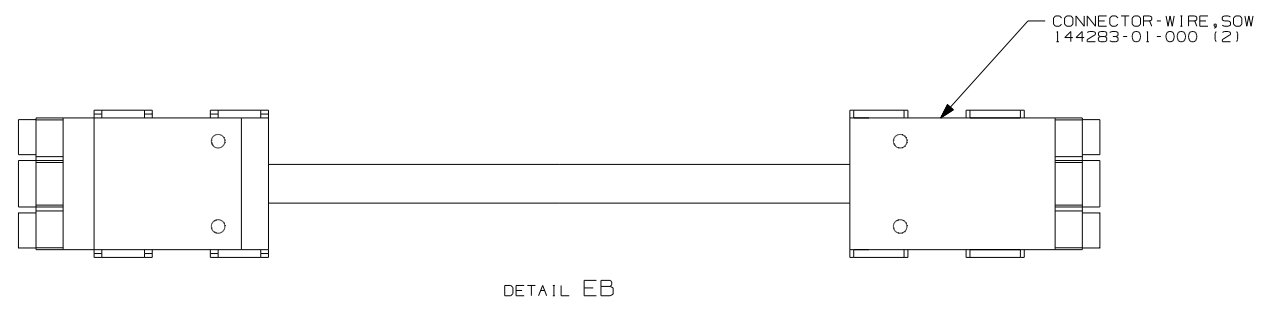
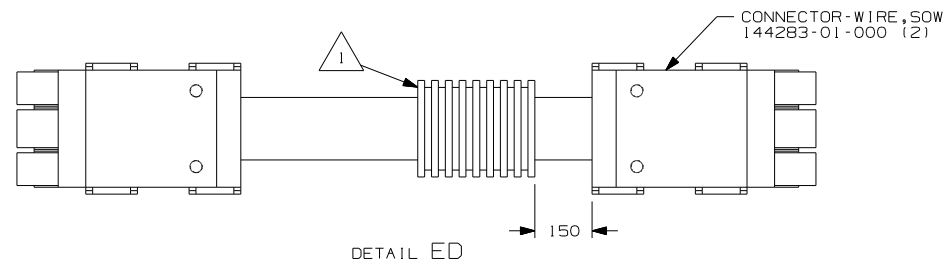
276

FOR ELECTRICAL  
TORQUE  
SPECIFICATIONS  
SEE DWG NO.  
128783-01-000

X-X  
FOR ELECTRICAL  
CALLOUTS  
SEE DWG NO.  
121339-01-000

- 29D A/C ROOF-ONE 13,500 BTU
- 250 A/C ROOF AIR (1) 14,800 BTU
- 276 A/C ROOF-HI EFF (2) W/EMS
- 12D ELECTRICAL SYSTEM 30 AMP
- 265 CODES/STANDARDS-CSA/CMVSS
- 1B1 CODES/STANDARDS USA

FIRST USED	
08 D-SERIES	
DO NOT SCALE DRAWING	
TITLE: LOAD CENTER/ATS ASM	
SHEET 4	PART NO 162640
REV	



- NOTES:
- 3 ON D26P MEASURE 2500MM FROM THE BACK OF THE LOAD CENTER, LOOP THE BLACK WIRE AND CONNECT AS SHOWN.
  - 2 ON D30B & D29R MEASURE 1200MM FROM THE BACK OF THE LOAD CENTER, LOOP THE BLACK WIRE AND CONNECT AS SHOWN.
  - 1 APPLY 300MM OF CONDUIT-CONVOLUTE 41953-05-000 OVER WIRE AT DIMENSION SHOWN AND SECURE BOTH ENDS OF TUBING TO WIRE WITH TAPE 8363-01-000.

FOR ELECTRICAL TORQUE SPECIFICATIONS SEE DWG NO. 128783-01-000

FOR ELECTRICAL CALLOUTS SEE DWG NO. 121339-01-000

- 53Z WTR HTR-6GAL/1110/LP/MTR/AUTO
- 29J AC HEAT PUMP-1
- 25Q A/C ROOF AIR (1) 14,800 BTU
- 12D ELECTRICAL SYSTEM 30 AMP
- 265 CODES/STANDARDS-CSA/CMVSS
- 1B1 CODES/STANDARDS USA

FIRST USED	
08 D-SERIES	
DO NOT SCALE DRAWING	
TITLE: LOAD CENTER/ATS ASM	
SHEET 5	PART NO 162640
REV 1 3/12/2008	