



DANGER

Danger of electrical shock, burns or death. Always remove all power sources before attempting any repair, service or diagnostic work. Power can be present from shore power, generator, inverter or battery. All power sources must be disabled and secured before performing any service.



CAUTION

If you lack the skills, tools or equipment to perform diagnostic or repair work leave such work to an authorized Winnebago Industries dealer or other qualified shop.

6
CIRCUIT BREAKER-15 AMP
93654-02-000
SCREW
G52-06-05B
LOCKWASHER
OME02B-04-071

CIRCUIT BREAKER-15 AMP
93654-02-000 (3)
SCREW
G52-06-05B (3)
LOCKWASHER
OME02B-04-071 (3)

LABEL-CIRCUIT BREAKER
93236-47-000

57M
CIRCUIT BREAKER-15 AMP
93654-02-000
SCREW
G52-06-05B
LOCKWASHER
OME02B-04-071

CIRCUIT BREAKER-30 AMP
93655-02-000
SCREW
G52-06-04B
G52-06-05B
LOCKWASHER
OME02B-04-071 (2)

CIRCUIT BREAKER-25 AMP
93655-01-000
SCREW
G52-06-04B
G52-06-05B
LOCKWASHER
OME02B-04-071 (2)

CIRCUIT BREAKER-30 AMP
93655-02-000
SCREW
G52-06-04B
G52-06-05B
LOCKWASHER
OME02B-04-071 (2)

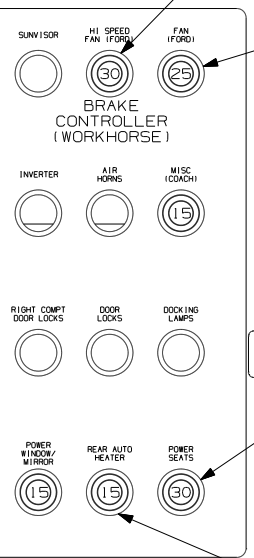
CIRCUIT BREAKER-15 AMP
93654-02-000
SCREW
G52-06-05B
LOCKWASHER
OME02B-04-071

BRACKET-CIRCUIT BREAKER
149689-01-CHT
SCREW
G11-10-08B (4)

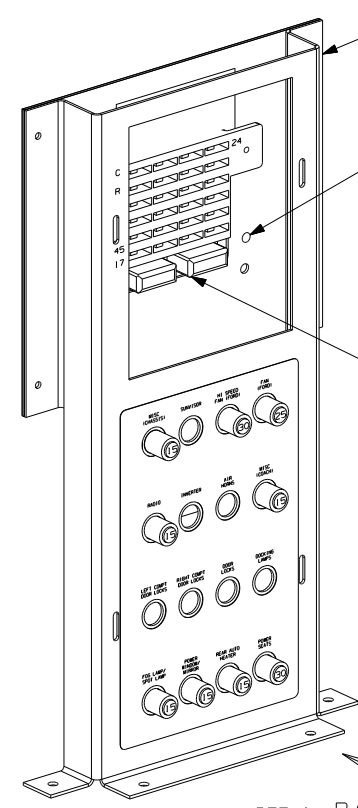
BRACKET-FUSE PANEL
149690-01-CHT
149690-02-CHT
SCREW
G11-10-08B (4)

CHASSIS SUPPLIED
FUSE PANEL

- NOTES:
- 6 F32H & F3BJ ONLY
 - 5 F-SERIES
 - 4 D-SERIES
 - 3 F32H & F3BJ: CONNECT DDG TO HOLE IN BUSS BAR
ALL OTHER MODELS: CONNECT DDG TO BOTTOM
LUG OF 30 AMP BREAKER
 - 2 WORKHORSE PANEL SHOWN.
 - 1 ALL CIRCUITS ARE IN WIRE ASM-IP,MAIN.



VIEW BB



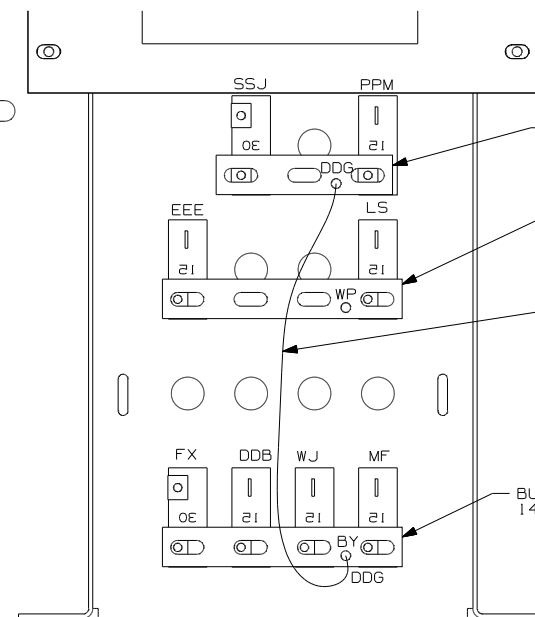
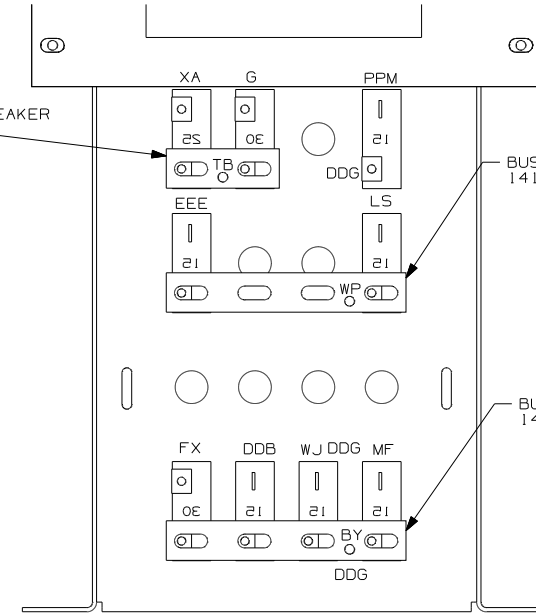
DETAIL BA

BUSS BAR CIRCUIT BREAKER
141744-01-000

BUSS BAR CIRCUIT BREAKER
141744-03-000

BUSS BAR CIRCUIT BREAKER
141744-03-000

VIEW BC
1 16H 16M 16L



VIEW BC
1 1PG 1PS 1PV 1PJ 1PL

BUSS BAR CIRCUIT BREAKER
141744-02-000

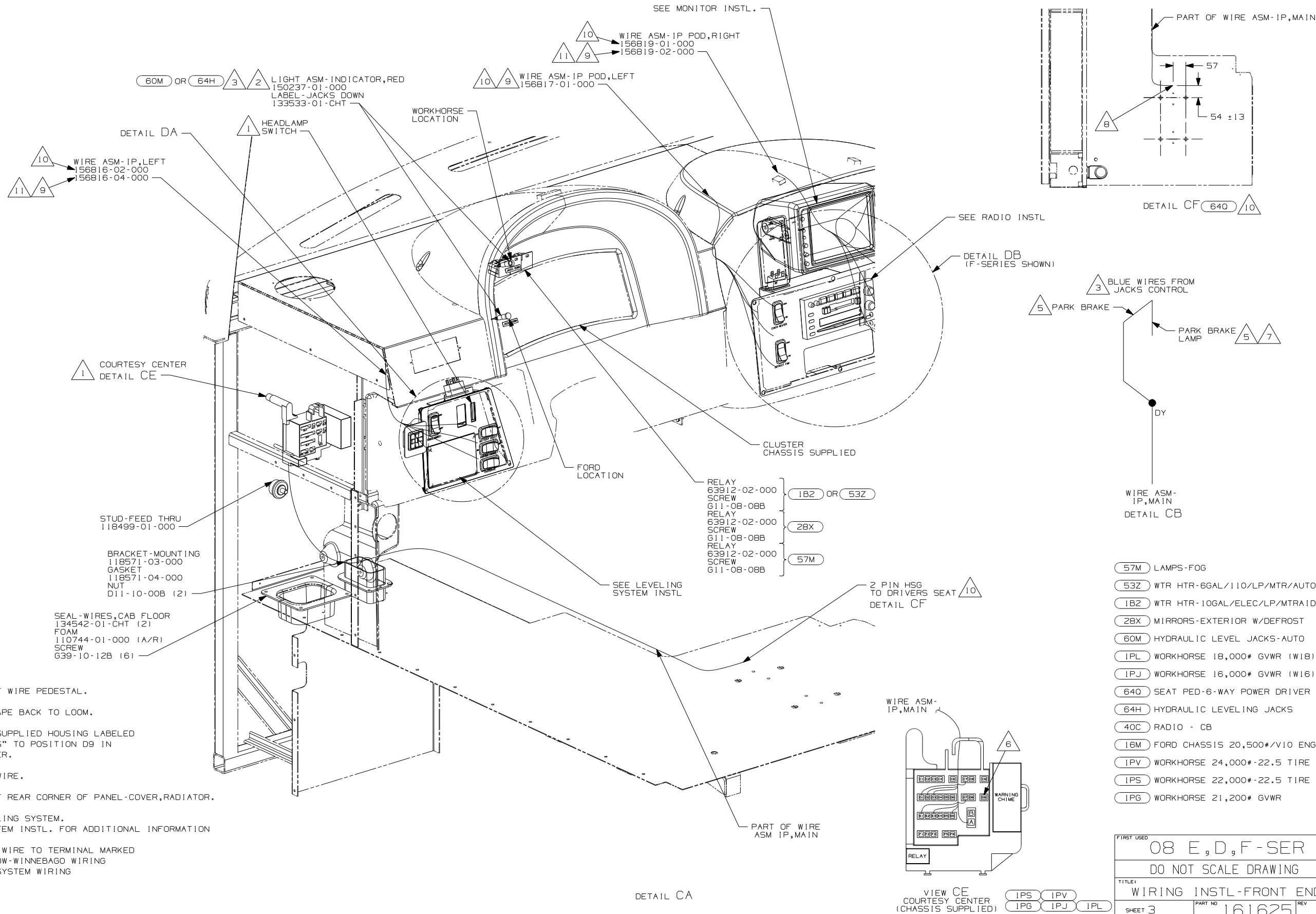
BUSS BAR CIRCUIT BREAKER
141744-03-000

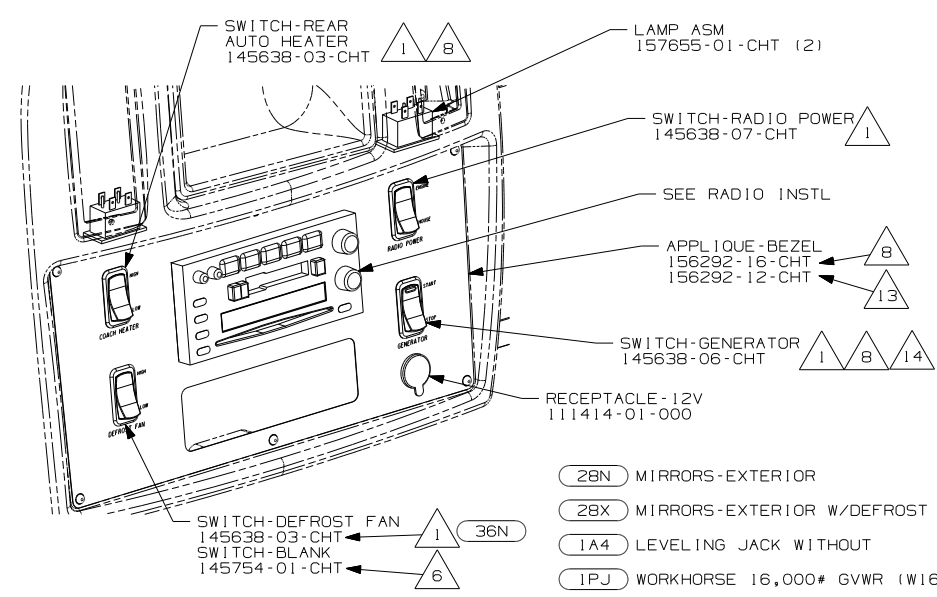
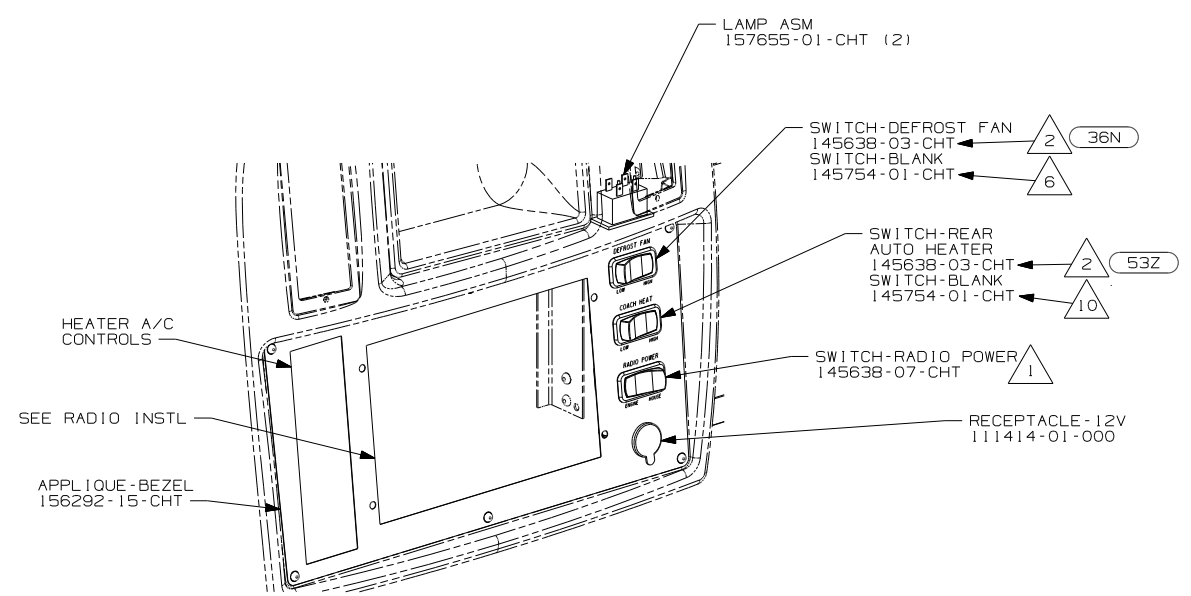
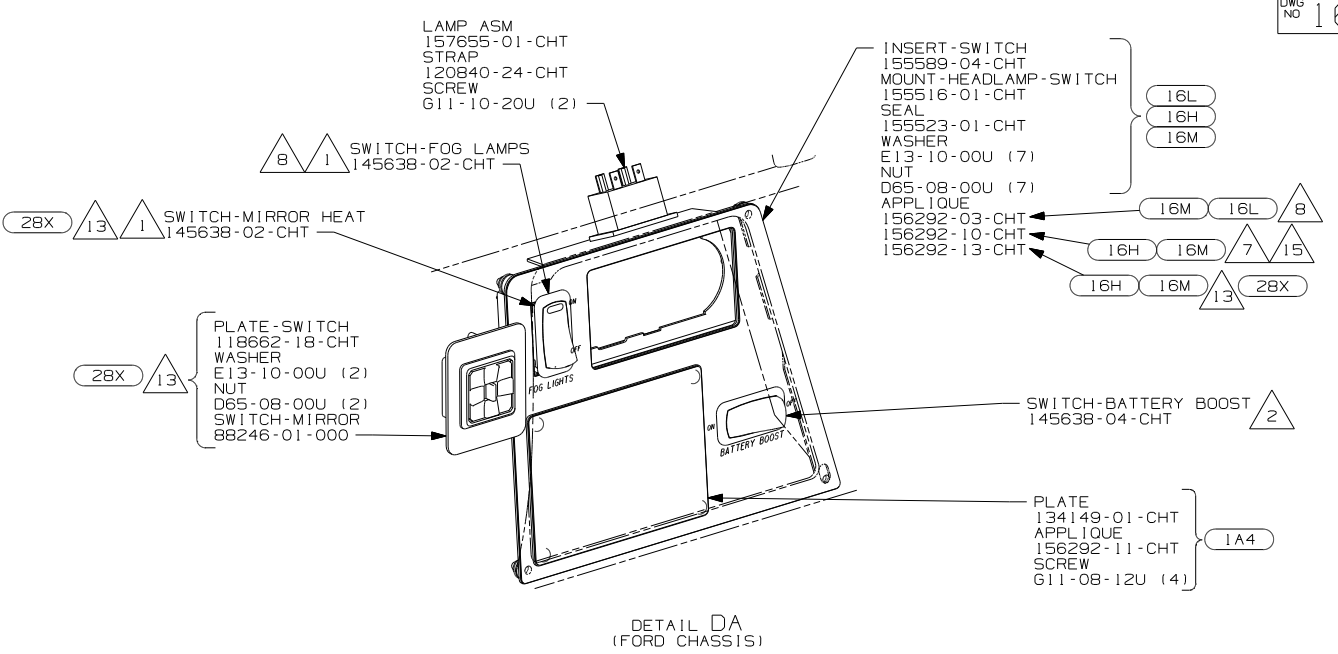
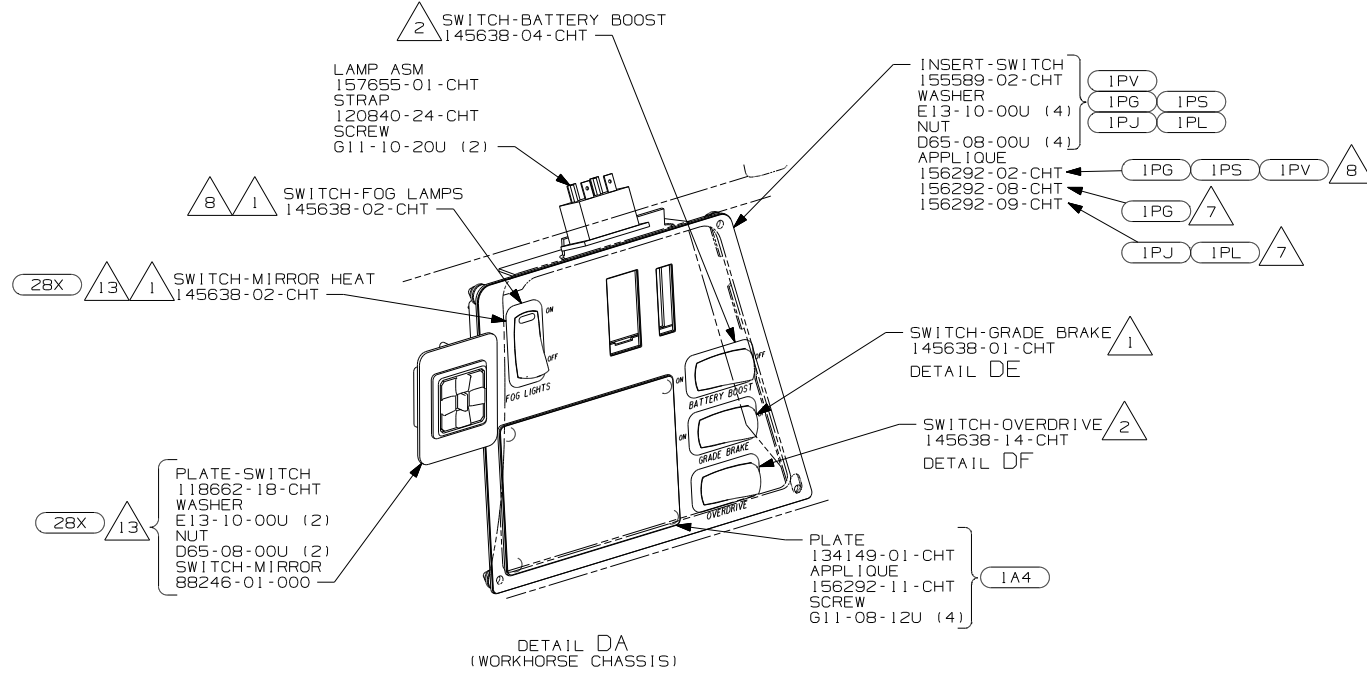
DDG 3

BUSS BAR CIRCUIT BREAKER
141744-03-000

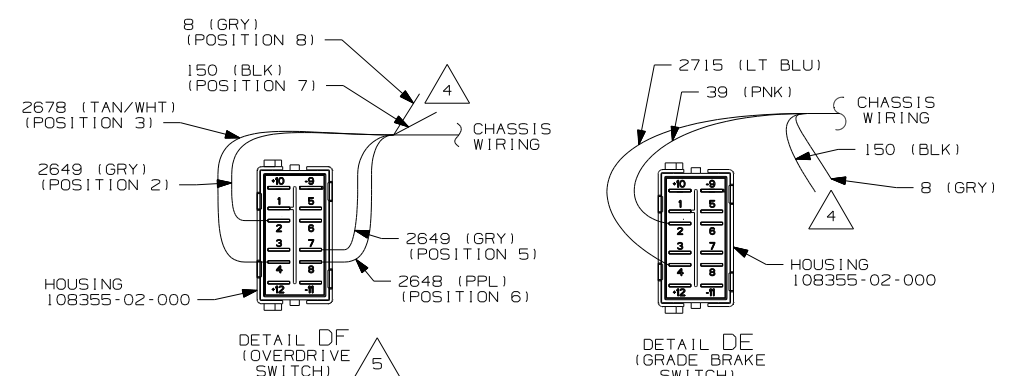
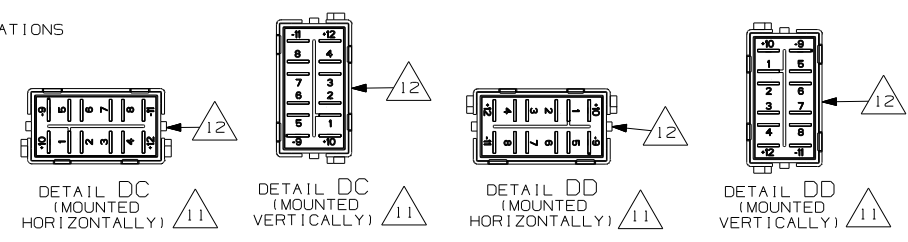
- 53Z WTR HTR-6GAL/110/LP/MTR/AUTO
- 57M LAMPS-FOG
- 1PL WORKHORSE 18,000# GVWR (W18)
- 1PJ WORKHORSE 16,000# GVWR (W16)
- 16H FORD CHASSIS 18,000#/V10 ENG
- 64Q SEAT PED-6-WAY POWER DRIVER
- 16M FORD CHASSIS 20,500#/V10 ENG
- 1PV WORKHORSE 24,000#-22.5 TIRE
- 1PS WORKHORSE 22,000#-22.5 TIRE
- 1PG WORKHORSE 21,200# GVWR
- 16L FORD 22,000#-22.5 AL WHL

FIRST USED 08 E, D, F-SER		
DO NOT SCALE DRAWING		
TITLE: WIRING INSTL-FRONT END		
SHEET 2	PART NO 161625	REV

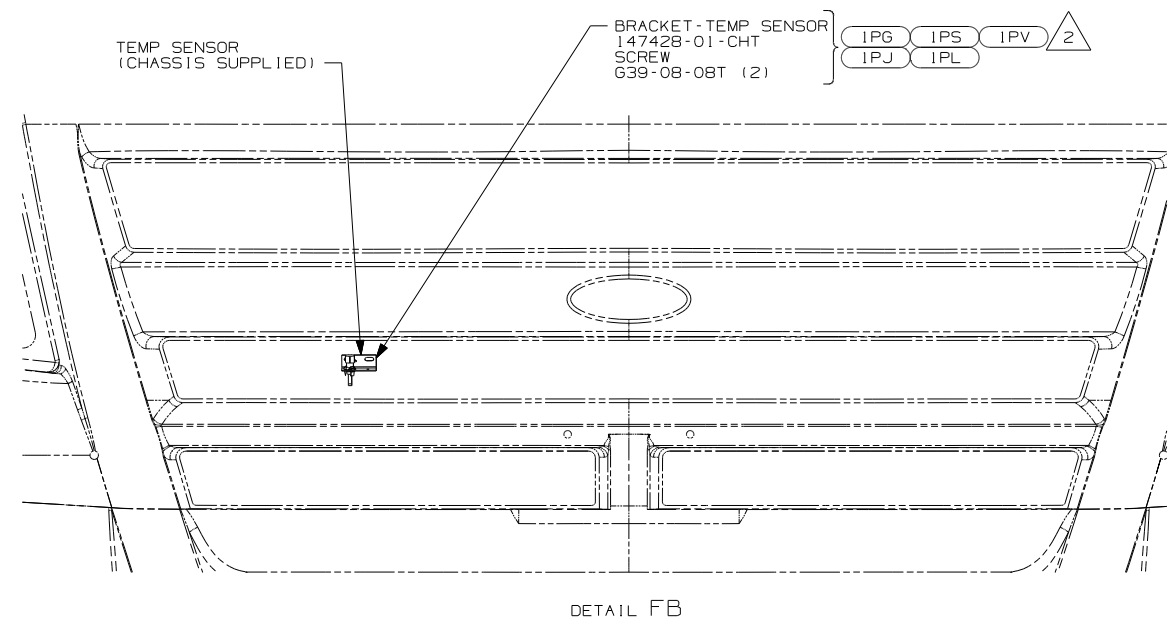
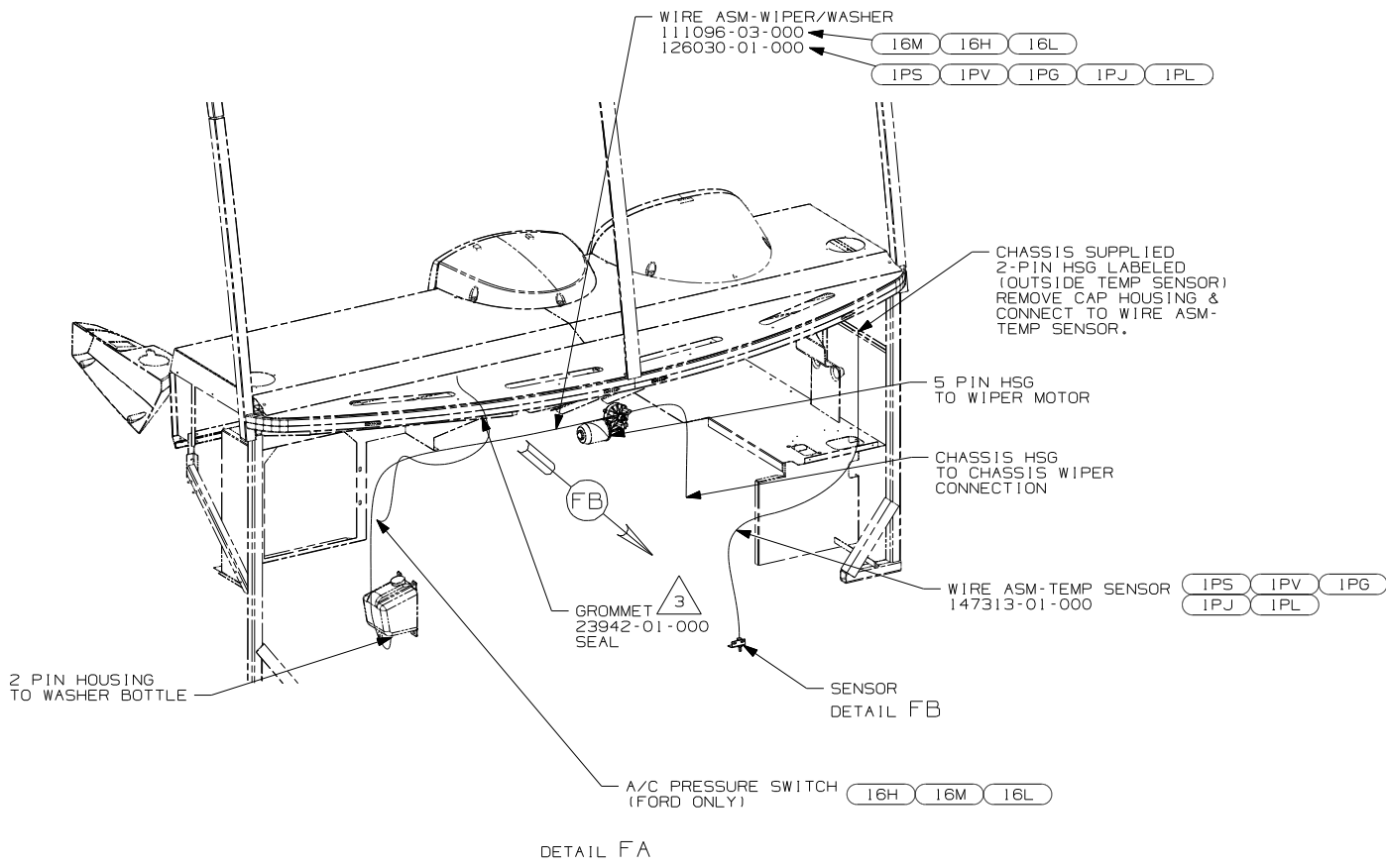




- NOTES:
- 15 E-SERIES WITH 28N
 - 14 F-SHELLS WITH 39N
 - 13 E-SERIES ONLY.
 - 12 WITH SWITCH INSTALLED THIS SIDE OF SWITCH WILL FACE LEFT SIDEWALL.
 - 11 DETAIL IS LOOKING AT SWITCH FROM THE BACK SIDE OF SWITCH AS ITS INSTALLED.
 - 10 D-SERIES WITHOUT 53Z
 - 9 D-SERIES WITH 53Z
 - 8 F-SERIES
 - 7 D-SERIES
 - 6 WITHOUT 36N ON D OR F-SERIES ONLY. N/A ON E-SERIES
 - 5 POSITIONS NOTED IN PARENTHESIS ARE LOCATIONS IN WORKHORSE SUPPLIED HOUSING.
 - 4 REMOVE TERMINALS & TAPE BACK TO LOOM.
 - 3 WITHOUT 092
 - 2 SEE DETAIL DC FOR ORIENTATION.
 - 1 SEE DETAIL DD FOR ORIENTATION.



- 28N MIRRORS-EXTERIOR
- 28X MIRRORS-EXTERIOR W/DEFROST
- 1A4 LEVELING JACK WITHOUT
- 1PJ WORKHORSE 16,000# GVWR (W16)
- 1PL WORKHORSE 18,000# GVWR (W18)
- 16H FORD CHASSIS 18,000#/V10 ENG
- 53Z WTR HTR-6GAL/110/LP/MTR/AUTO
- 36N FANS-DEFROSTER, AUXILIARY
- 16M FORD CHASSIS 20,500#/V10 ENG
- 1PV WORKHORSE 24,000#-22.5 TIRE
- 1PS WORKHORSE 22,000#-22.5 TIRE
- 1PG WORKHORSE 21,200# GVWR
- 092 SLIDEOUT ROOM - FRONT RIGHT
- 09L SLIDEOUT ROOM FRONT LEFT
- 16L FORD 22,000#-22.5 AL WHL



- 3 ROUTE WIRES THROUGH HOLE IN STEEL.
- 2 MOUNT SENSOR OR SENSOR BRACKET TO
HORIZONTAL TUBE ON FIBERGLASS AS SHOWN.

1. GATHER ALL EXCESS WIRE AFTER MAKING ALL CONNECTIONS.
BUNDLE AND SECURE WITH WIRE TIE 8343-01-000 OR 93147-01-000.

NOTES:

1PL	WORKHORSE 18,000# GVWR (W18)
1PJ	WORKHORSE 16,000# GVWR (W16)
16H	FORD CHASSIS 18,000#/V10 ENG
16M	FORD CHASSIS 20,500#/V10 ENG
1PV	WORKHORSE 24,000#-22.5 TIRE
1PS	WORKHORSE 22,000#-22.5 TIRE
1PG	WORKHORSE 21,200# GVWR
16L	FORD 22,000#-22.5 AL WHL

08 E, D, F-SER		
DO NOT SCALE DRAWING		
TITLE: WIRING INSTL-FRONT END		
SHEET 5	PART NO 161625	REV