



DANGER

Danger of electrical shock, burns or death. Always remove all power sources before attempting any repair, service or diagnostic work. Power can be present from shore power, generator, inverter or battery. All power sources must be disabled and secured before performing any service.

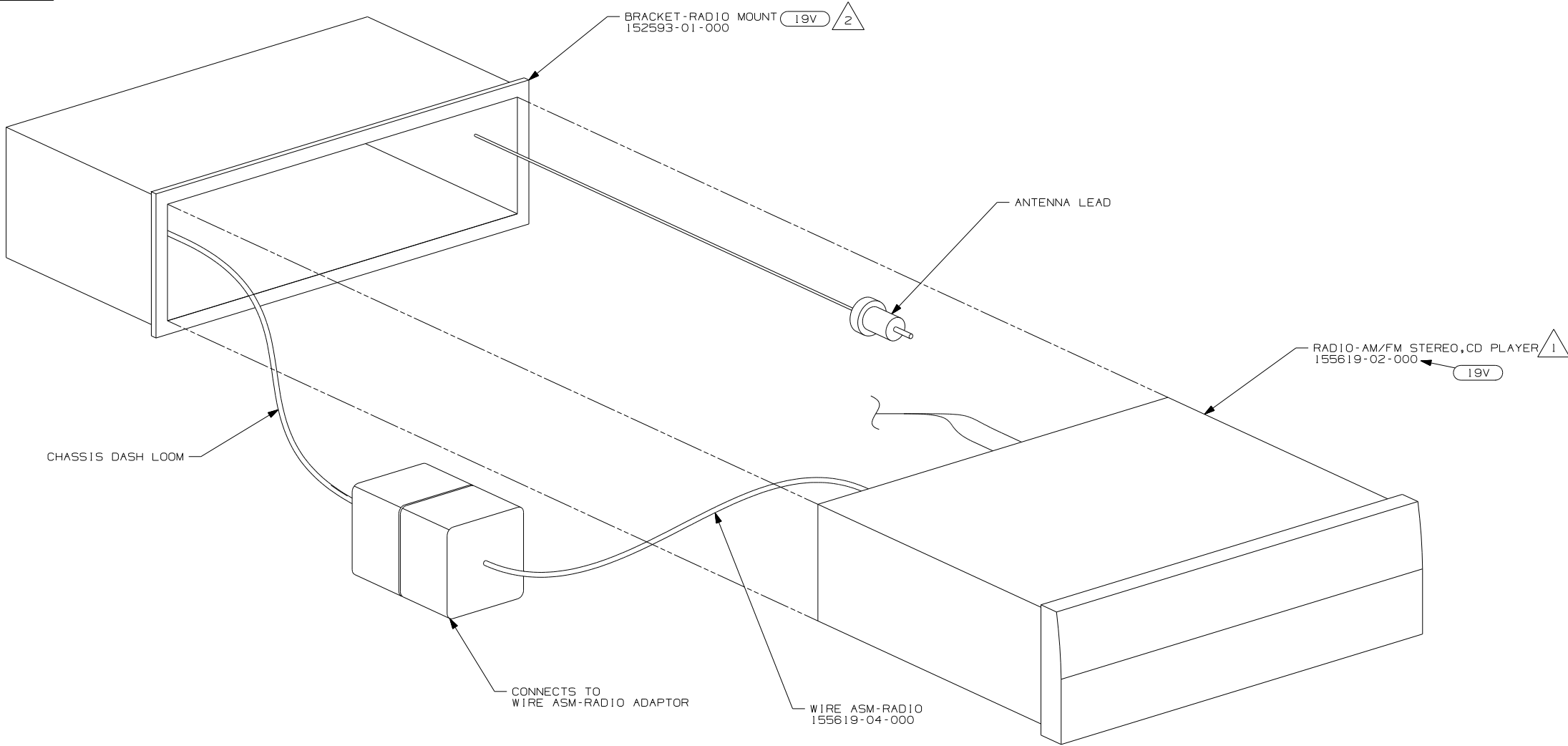


CAUTION

If you lack the skills, tools or equipment to perform diagnostic or repair work leave such work to an authorized Winnebago Industries dealer or other qualified shop.

DRAWING NO.	SHEET	SERIES
156331-01	1	200
156331-02	2	300 & 700
156331-03	3	500
156331-04	4	D,F,G,P,R,S-SERIES
156331-05	5	E-SERIES

RELEASE	REV DATE	ORIG NO	156331
REV ZONE	REVISION RECORD	DATE	DFTR-ORIG



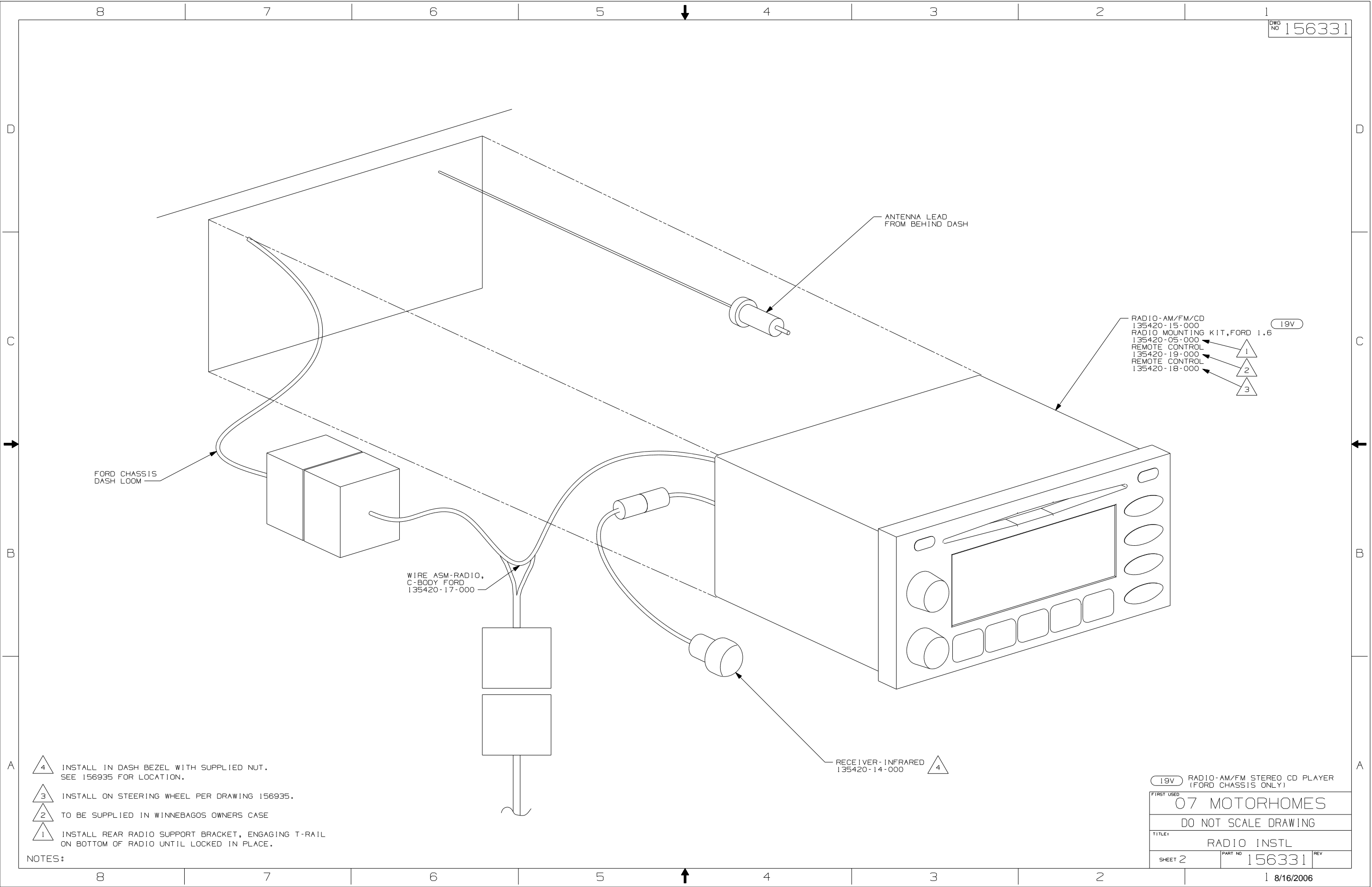
- 2 INSTALL REAR RADIO SUPPORT BRACKET, ENGAGING T-RAIL ON BOTTOM OF RADIO UNTIL LOCKED IN PLACE.
- 1 BEND TABS ON ALL 4 SIDES TO SECURE RADIO MOUNTING BRACKET TO DASH MOUNTING BRACKET.

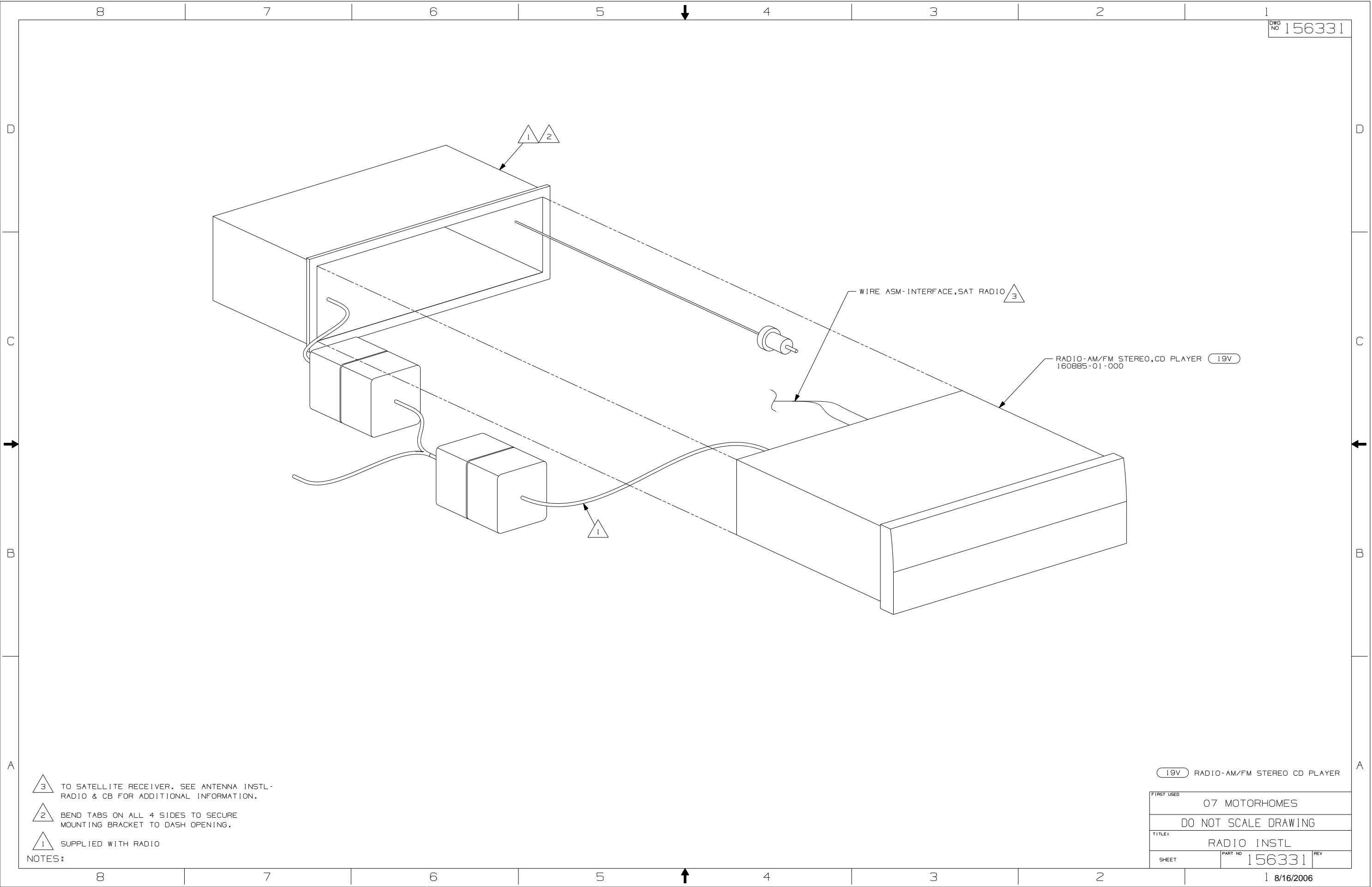
NOTES:

19V RADIO-AM/FM STEREO CD PLAYER (FORD CHASSIS ONLY)

WINNEBAGO		COPYRIGHT 2006 WINNEBAGO INDUSTRIES, INC.	
DFTR	ORIG. DATE		
CHKR	ALL DIMENSIONS ARE IN MILLIMETERS		
P.E.	FIRST USED		
M.E.	07 MOTORHOMES		
DSNR			
UNSPECIFIED TOLERANCES ARE:		MATERIAL:	
WHOLE DIM (X) :			
ONE-PLACE (X,X) :			
TWO-PLACE (X,XX) :			
ANGLE :			
THIRD ANGLE PROJECTION			

DO NOT SCALE DRAWING			
TITLE: RADIO INSTL			
SHEET 1 OF 5		PART NO	156331
REF:		1 8/16/2006	





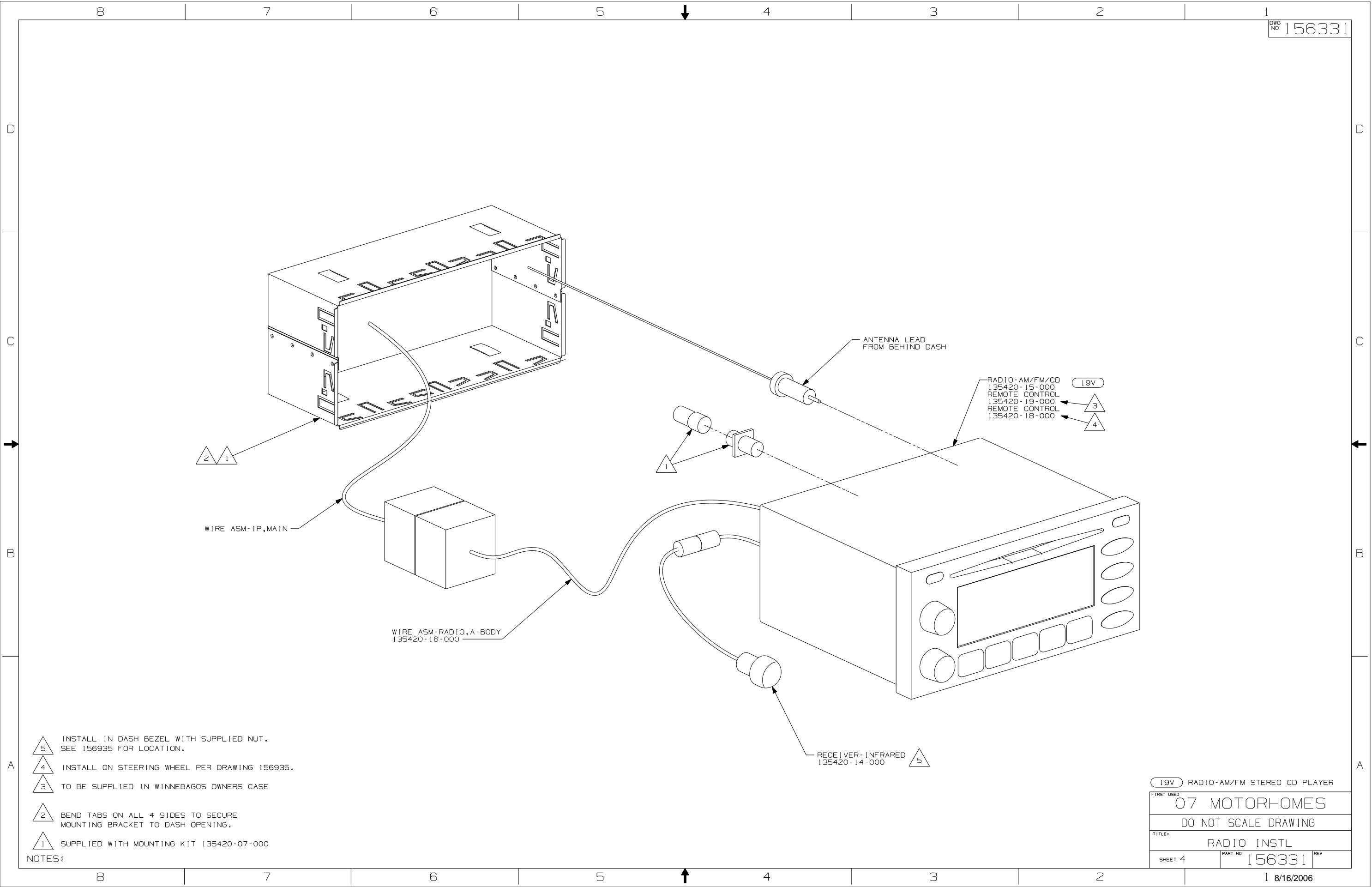
156331

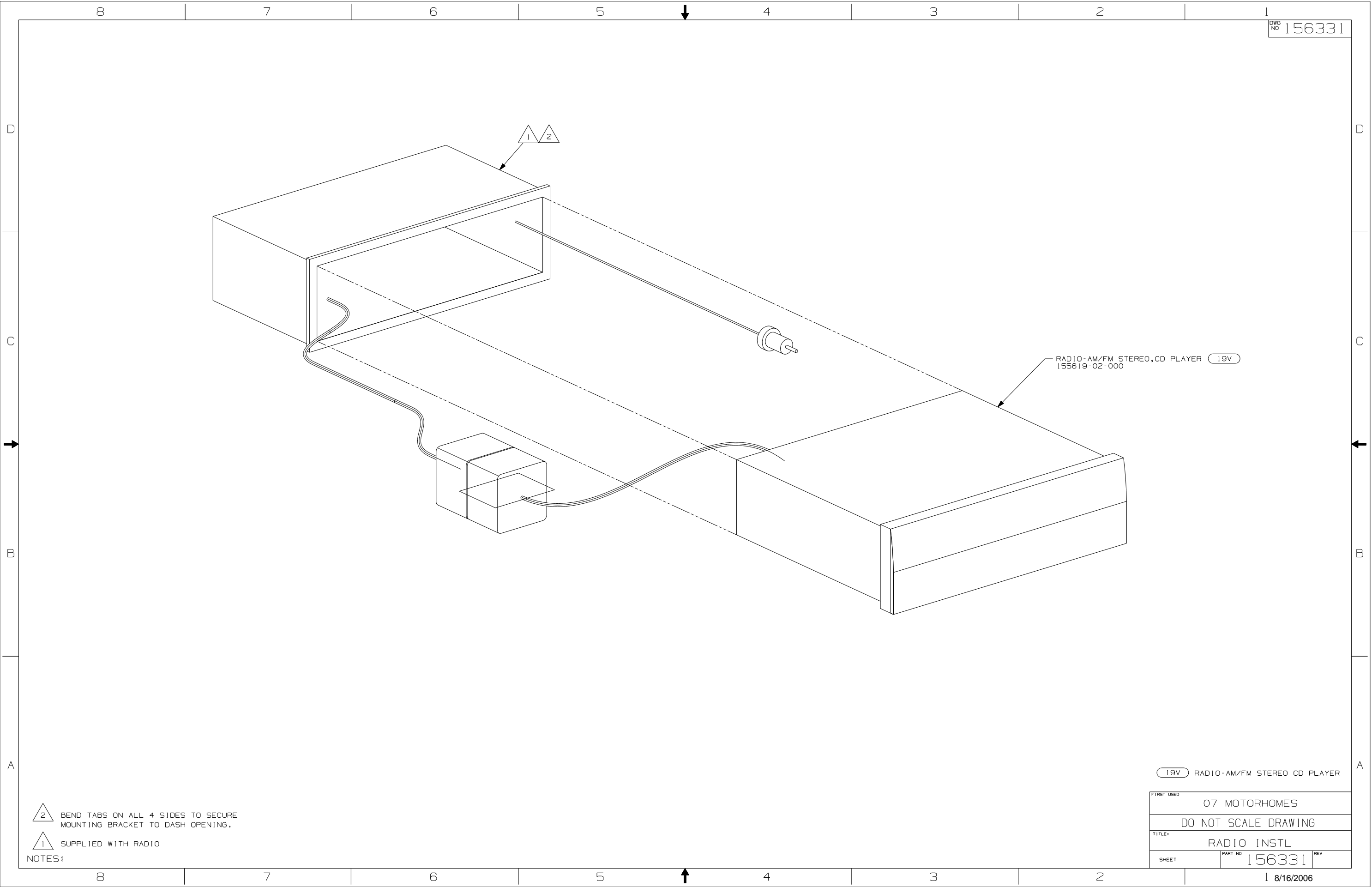
- 3 TO SATELLITE RECEIVER. SEE ANTENNA INSTL-
RADIO & CB FOR ADDITIONAL INFORMATION.
- 2 BEND TABS ON ALL 4 SIDES TO SECURE
MOUNTING BRACKET TO DASH OPENING.
- 1 SUPPLIED WITH RADIO

NOTES:

19V RADIO-AM/FM STEREO CD PLAYER

FIRST USED			07 MOTORHOMES		
TITLE:			DO NOT SCALE DRAWING		
SHEET			RADIO INSTL		
PART NO			156331		
REV			1 8/16/2006		





156331

RADIO-AM/FM STEREO,CD PLAYER 19V
155619-02-000

19V RADIO-AM/FM STEREO CD PLAYER

2 BEND TABS ON ALL 4 SIDES TO SECURE
MOUNTING BRACKET TO DASH OPENING.

1 SUPPLIED WITH RADIO

NOTES:

FIRST USED			07 MOTORHOMES		
DO NOT SCALE DRAWING					
TITLE#					
RADIO INSTL					
SHEET		PART NO		REV	
		156331			

1 8/16/2006