



**DANGER**

**Danger of electrical shock, burns or death.** Always remove all power sources before attempting any repair, service or diagnostic work. Power can be present from shore power, generator, inverter or battery. All power sources must be disabled and secured before performing any service.

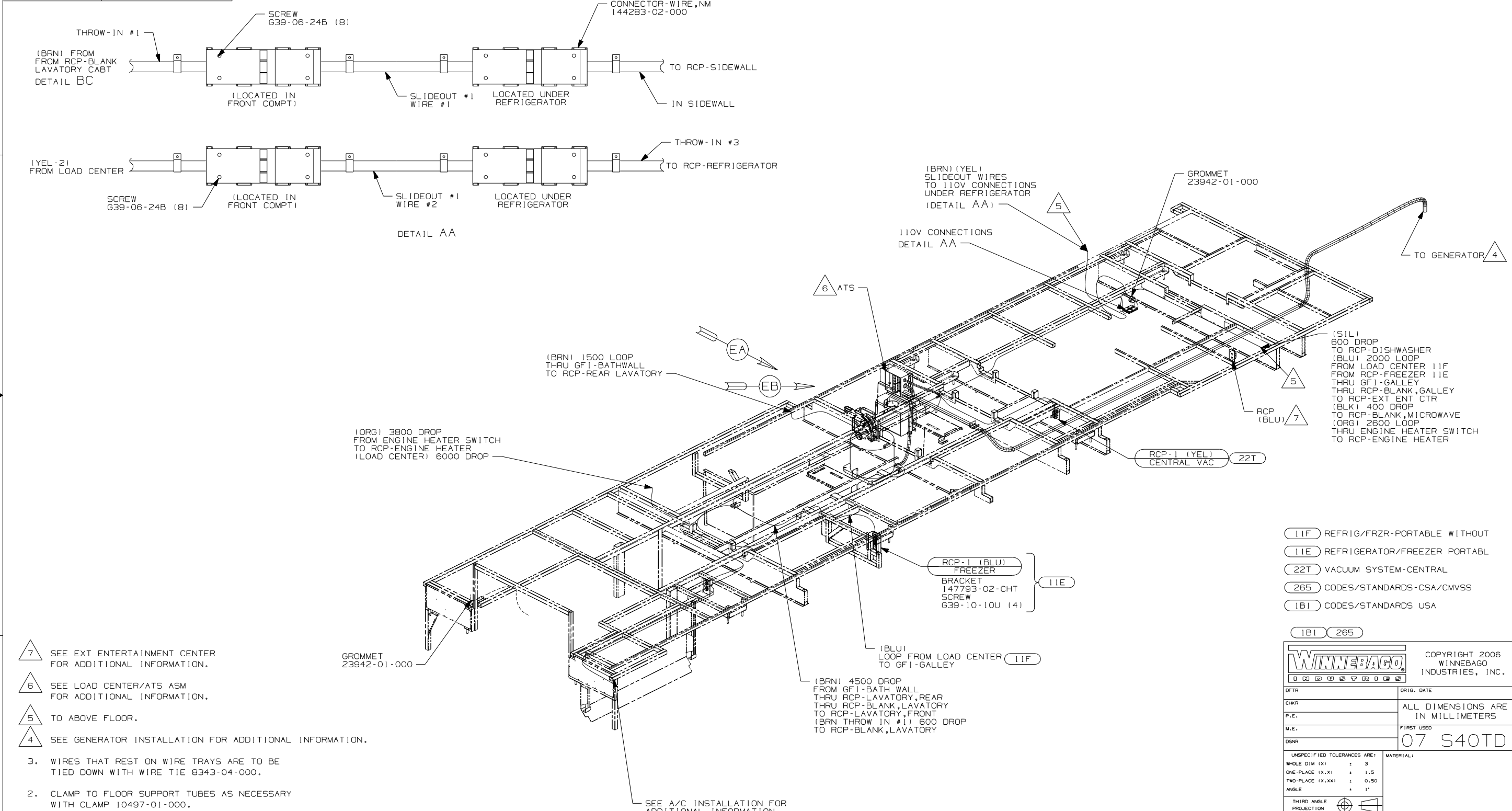


**CAUTION**

If you lack the skills, tools or equipment to perform diagnostic or repair work leave such work to an authorized Winnebago Industries dealer or other qualified shop.

DRAWING NO.	FEATURE
158645-01	-----
158645-14	(1B1) (78J) (13X)
158645-18	(265) (78J) (13X)

RELEASE	REV DATE	DWG NO	158645
REV ZONE	REVISION RECORD	DATE	DFTR-0R16



- 7 SEE EXT ENTERTAINMENT CENTER FOR ADDITIONAL INFORMATION.
- 6 SEE LOAD CENTER/ATS ASM FOR ADDITIONAL INFORMATION.
- 5 TO ABOVE FLOOR.
- 4 SEE GENERATOR INSTALLATION FOR ADDITIONAL INFORMATION.
3. WIRES THAT REST ON WIRE TRAYS ARE TO BE TIED DOWN WITH WIRE TIE 8343-04-000.
2. CLAMP TO FLOOR SUPPORT TUBES AS NECESSARY WITH CLAMP 10497-01-000.
1. ALL WIRES TO BE SECURED WITH CLAMP 10495 OR 10497 OR WIRE TIE 8343 OR 108046 EVERY 600MM, USE SCREW G67-XX-XXX OR G56-XX-XXX AS APPROPRIATE FOR INSTALLATION.

NOTES:

- (11F) REFRIG/FRZR-PORTABLE WITHOUT
- (11E) REFRIGERATOR/FREEZER PORTABL
- (22T) VACUUM SYSTEM-CENTRAL
- (265) CODES/STANDARDS-CSA/CMVSS
- (1B1) CODES/STANDARDS USA

1B1 265

**WINNEBAGO** COPYRIGHT 2006 WINNEBAGO INDUSTRIES, INC.

DFTR	ORIG. DATE
CHKR	ALL DIMENSIONS ARE IN MILLIMETERS
P.E.	FIRST USED
M.E.	07 S40TD
DSNR	

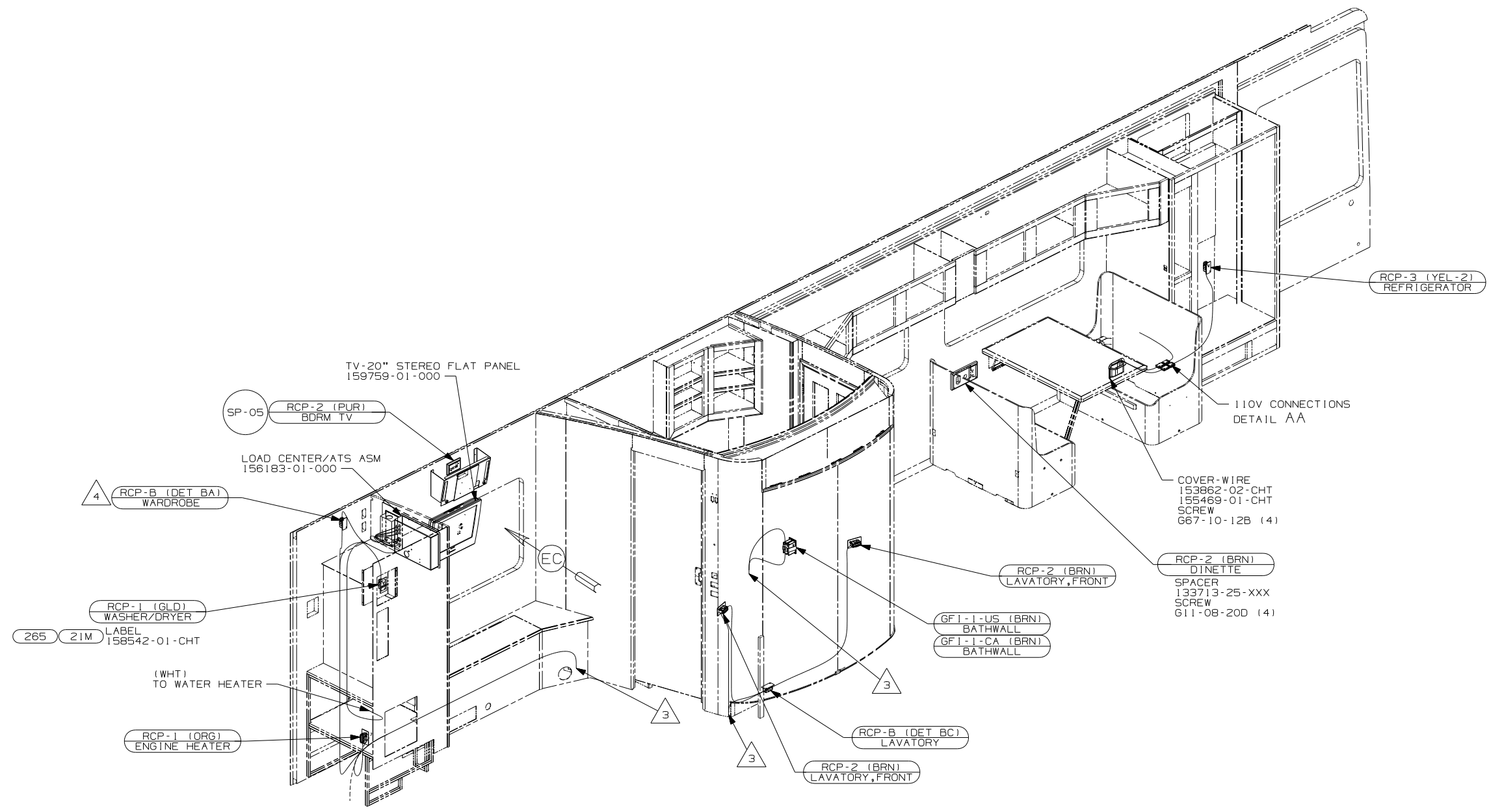
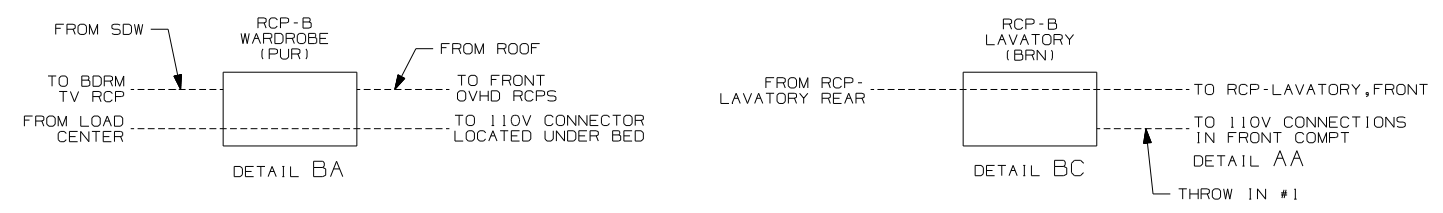
UNSPECIFIED TOLERANCES ARE: MATERIAL:

WHOLE DIM (X)	: 3
ONE-PLACE (X.X)	: 1.5
TWO-PLACE (X.XX)	: 0.50
ANGLE	: 1°

THIRD ANGLE PROJECTION

FOR ELECTRICAL TORQUE SPECIFICATIONS SEE DWG NO. 128783-01-000

(X-X) FOR ELECTRICAL CALLOUTS SEE DWG NO. 121339-01-000



- 4 ADD A 500 PUR LOOP BEHIND 110V PANEL
- 3 WIRES ROUTE BELOW FLOOR IN THIS AREA.
2. ALL 110V WIRES TO BE CLAMPED WITH CLAMP 10497-05-000 WITHIN 200mm OF OUTLET BOXES, USE SCREW G67-10-12B.

1. ALL WIRES TO BE SECURED WITH CLAMP 10495 OR 10497 OR WIRE TIE 8343 OR 108046 EVERY 600MM, USE SCREW G67-XX-XXX OR G56-XX-XXX AS APPROPRIATE FOR INSTALLATION.

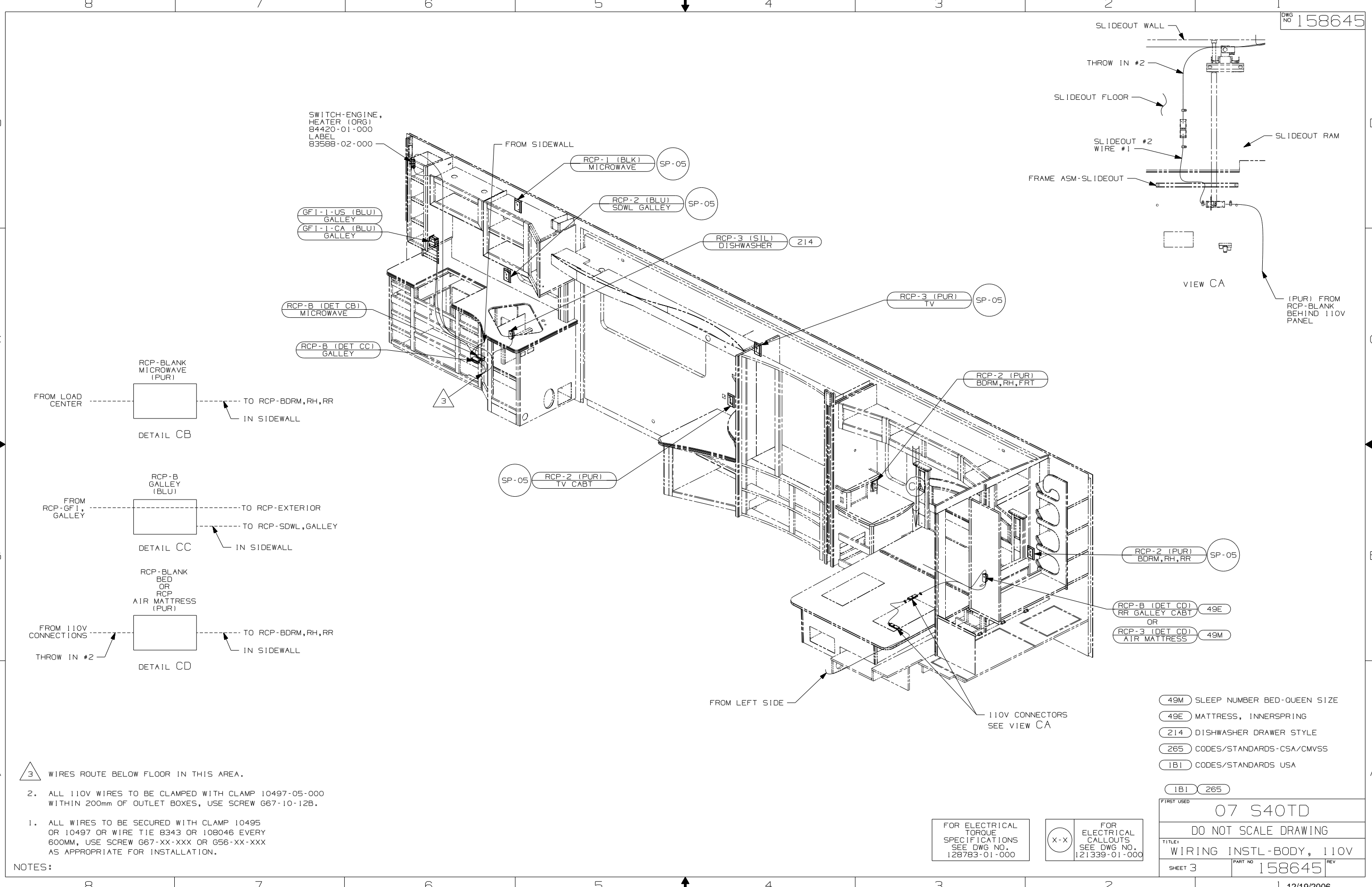
NOTES:

- 21M WASHER/DRYER PREP
- 265 CODES/STANDARDS-CSA/CMVSS
- 1B1 CODES/STANDARDS USA

FIRST USED	07 S40TD	
TITLE	DO NOT SCALE DRAWING	
TITLE	WIRING INSTL-BODY, 110V	
SHEET 2	PART NO	158645
	REV	

FOR ELECTRICAL TORQUE SPECIFICATIONS SEE DWG NO. 128783-01-000

(X-X) FOR ELECTRICAL CALLOUTS SEE DWG NO. 121339-01-000



SWITCH-ENGINE,  
HEATER (ORG)  
84420-01-000  
LABEL  
83588-02-000

GF1-1-US (BLU)  
GALLEY  
GF1-1-CA (BLU)  
GALLEY

RCP-B (DET CB)  
MICROWAVE

RCP-B (DET CC)  
GALLEY

RCP-BLANK  
MICROWAVE  
(PUR)

DETAIL CB

RCP-B  
GALLEY  
(BLU)

DETAIL CC

RCP-BLANK  
BED  
OR  
RCP  
AIR MATTRESS  
(PUR)

DETAIL CD

SP-05 RCP-2 (PUR)  
TV CABT

RCP-1 (BLK)  
MICROWAVE SP-05

RCP-2 (BLU)  
SDWL GALLEY SP-05

RCP-3 (SIL)  
DISHWASHER 214

RCP-3 (PUR)  
TV SP-05

RCP-2 (PUR)  
BDRM,RH,FRT

RCP-2 (PUR)  
BDRM,RH,RR SP-05

RCP-B (DET CD)  
RR GALLEY CABT  
OR

RCP-3 (DET CD)  
AIR MATTRESS 49M

- 49M SLEEP NUMBER BED-QUEEN SIZE
- 49E MATTRESS, INNERSPRING
- 214 DISHWASHER DRAWER STYLE
- 265 CODES/STANDARDS-CSA/CMVSS
- 1B1 CODES/STANDARDS USA

1B1 265

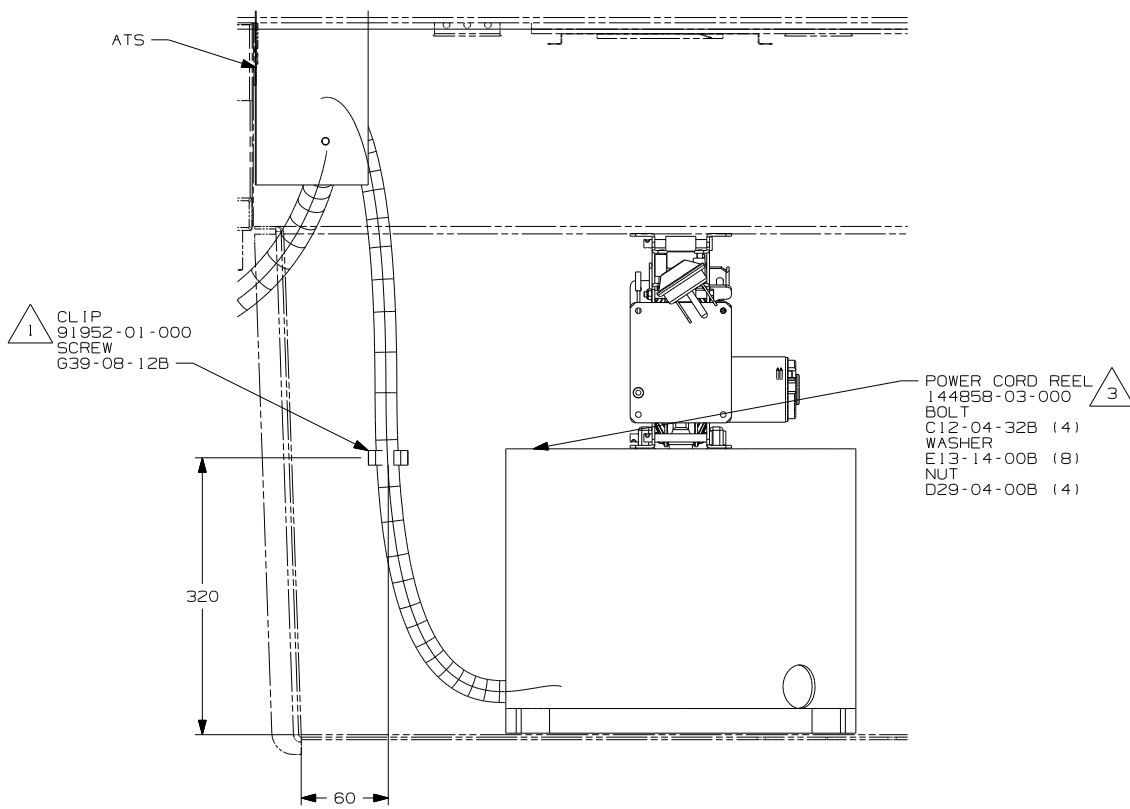
FIRST USED	
07 S40TD	
DO NOT SCALE DRAWING	
TITLE:	
WIRING INSTL-BODY, 110V	
SHEET 3	PART NO 158645 REV

FOR ELECTRICAL  
TORQUE  
SPECIFICATIONS  
SEE DWG NO.  
128783-01-000

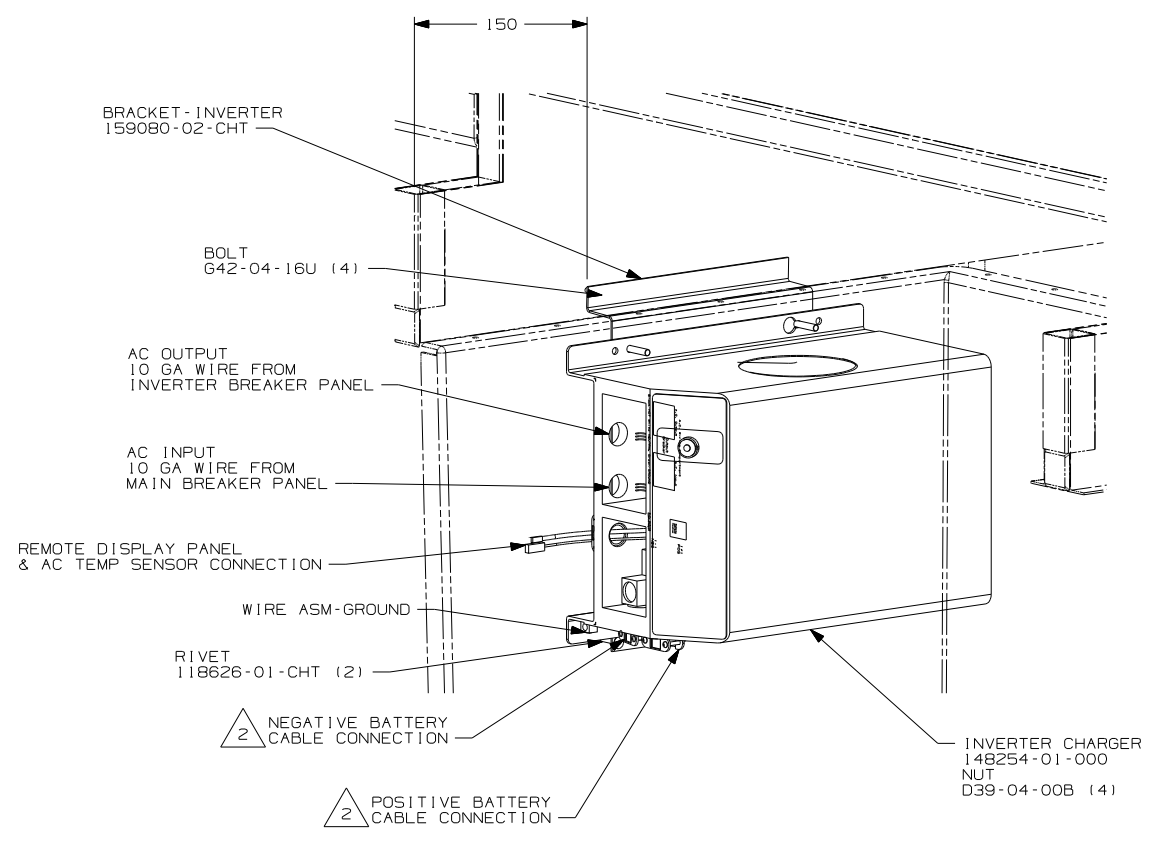
FOR ELECTRICAL  
CALLOUTS  
SEE DWG NO.  
121339-01-000

- NOTES:
1. ALL WIRES TO BE SECURED WITH CLAMP 10495 OR 10497 OR WIRE TIE 8343 OR 108046 EVERY 600MM, USE SCREW G67-XX-XXX OR G56-XX-XXX AS APPROPRIATE FOR INSTALLATION.
  2. ALL 110V WIRES TO BE CLAMPED WITH CLAMP 10497-05-000 WITHIN 200mm OF OUTLET BOXES, USE SCREW G67-10-12B.

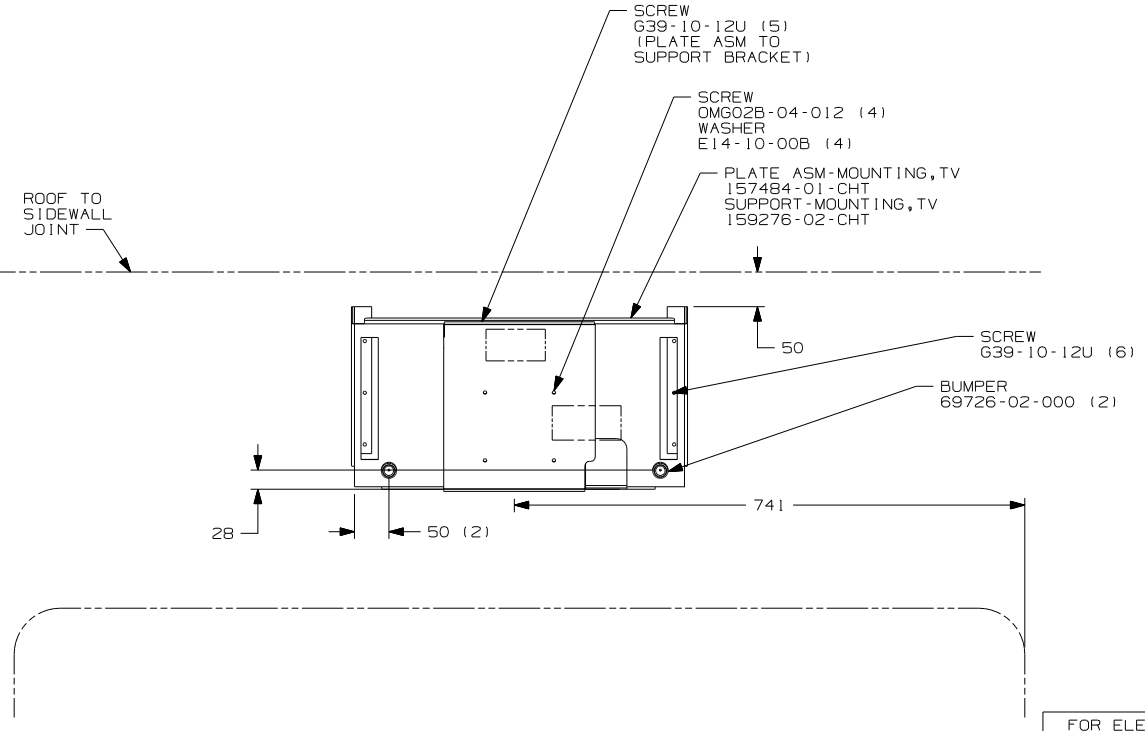
3 WIRES ROUTE BELOW FLOOR IN THIS AREA.



VIEW EA



VIEW EB



VIEW EC (TV NOT SHOWN)

- NOTES:
- 3 INSERT BOLT FROM BOTTOM OF COMPARTMENT.
  - 2 SEE BATTERY INSTL FOR ADDITIONAL INFORMATION.
  - 1 SEE LOAD CENTER/ATS ASM FOR ADDITIONAL INFORMATION.

FOR ELECTRICAL TORQUE SPECIFICATIONS SEE DWG NO. 128783-01-000

FOR ELECTRICAL CALLOUTS SEE DWG NO. 121339-01-000

FIRST USED	07 S40TD
DO NOT SCALE DRAWING	
TITLE:	WIRING INSTL-BODY, 110V
SHEET 4	PART NO 158645 REV