



DANGER

Danger of electrical shock, burns or death. Always remove all power sources before attempting any repair, service or diagnostic work. Power can be present from shore power, generator, inverter or battery. All power sources must be disabled and secured before performing any service.

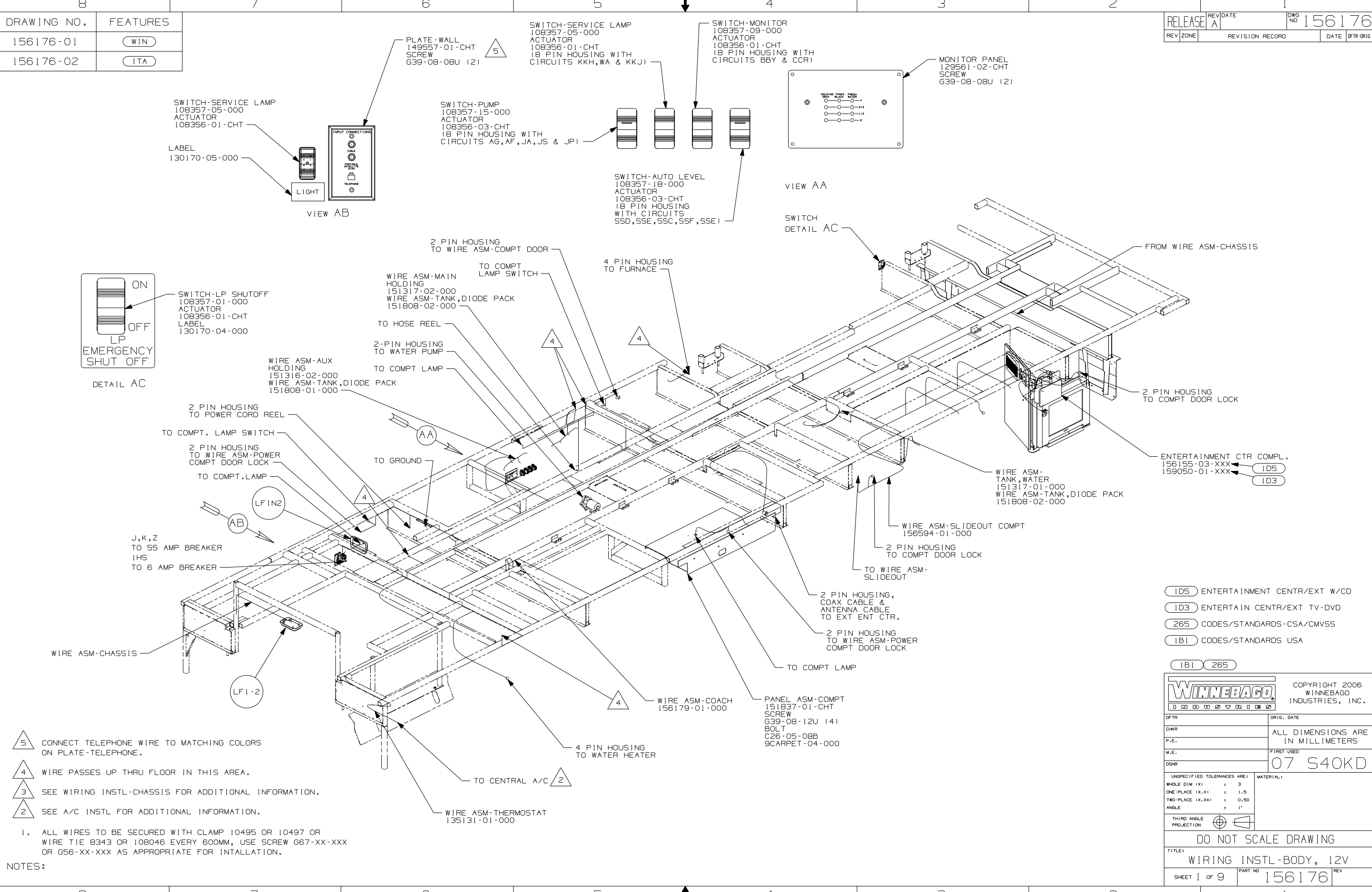


CAUTION

If you lack the skills, tools or equipment to perform diagnostic or repair work leave such work to an authorized Winnebago Industries dealer or other qualified shop.

DRAWING NO.	FEATURES
156176-01	(WIN)
156176-02	(ITA)

RELEASE	REV/DATE	ORIG NO
A		156176
REV ZONE	REVISION RECORD	DATE DFR-ORIG



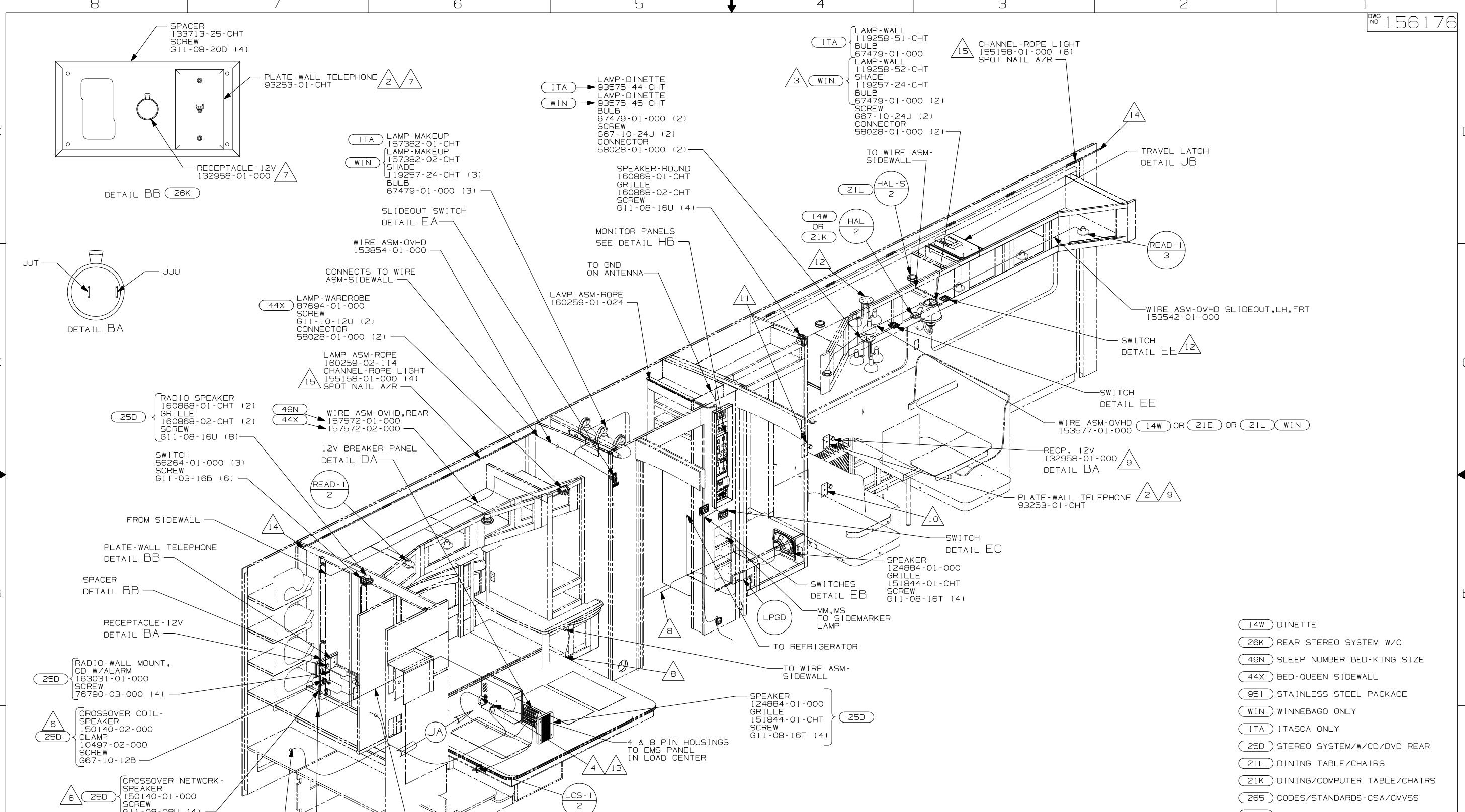
- 5 CONNECT TELEPHONE WIRE TO MATCHING COLORS ON PLATE-TELEPHONE.
- 4 WIRE PASSES UP THRU FLOOR IN THIS AREA.
- 3 SEE WIRING INSTL-CHASSIS FOR ADDITIONAL INFORMATION.
- 2 SEE A/C INSTL FOR ADDITIONAL INFORMATION.

1. ALL WIRES TO BE SECURED WITH CLAMP 10495 OR 10497 OR WIRE TIE 8343 OR 108046 EVERY 600MM, USE SCREW G67-XX-XXX OR G56-XX-XXX AS APPROPRIATE FOR INTALLATION.

NOTES:

- (ID5) ENTERTAINMENT CENTR/EXT W/CD
- (ID3) ENTERTAIN CENTR/EXT TV-DVD
- (265) CODES/STANDARDS-CSA/CMVSS
- (1B1) CODES/STANDARDS USA

WINNEBAGO		COPYRIGHT 2006 WINNEBAGO INDUSTRIES, INC.	
DFTR	ORIG. DATE		
CHKR	ALL DIMENSIONS ARE IN MILLIMETERS		
P.E.			
M.E.	FIRST USED	07 S40KD	
DSNR			
UNSPECIFIED TOLERANCES ARE:		MATERIAL:	
WHOLE DIM (X)	: 3		
ONE-PLACE (X.X)	: 1.5		
TWO-PLACE (X.XX)	: 0.50		
ANGLE	: 1°		
THIRD ANGLE PROJECTION		DO NOT SCALE DRAWING	
TITLE: WIRING INSTL-BODY, 12V			
SHEET 1 OF 9	PART NO	156176	REV
REF:	1 1/16/2007		



NOTES:

- ALL WIRES TO BE SECURED WITH CLAMP 10495 OR 10497 OR WIRE TIE 8343 OR 108046 EVERY 600MM, USE SCREW 667-XX-XXX OR G56-XX-XXX AS APPROPRIATE FOR INSTALLATION.

7 THIS COMPONENT MOVES TO RADIO CABINET WITH 25D

6 MOUNT BOX AND COIL BEHIND REAR STEREO TO SLIDEOUT WALL.

4 SEE WIRING INSTL-BODY, 110V FOR ROUTING & CLAMPING INFORMATION.

11 LOCATION WITH 14W

10 LOCATION WITH 21L

9 LOCATION WITH 21K

8 WIRES PASS UP THRU FLOOR IN THIS AREA.

15 SPACE CHANNELS 600 APART.

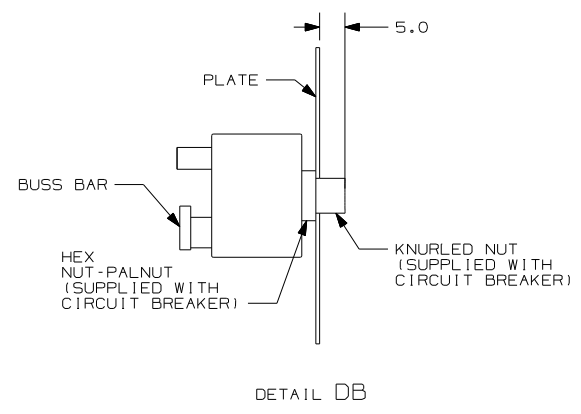
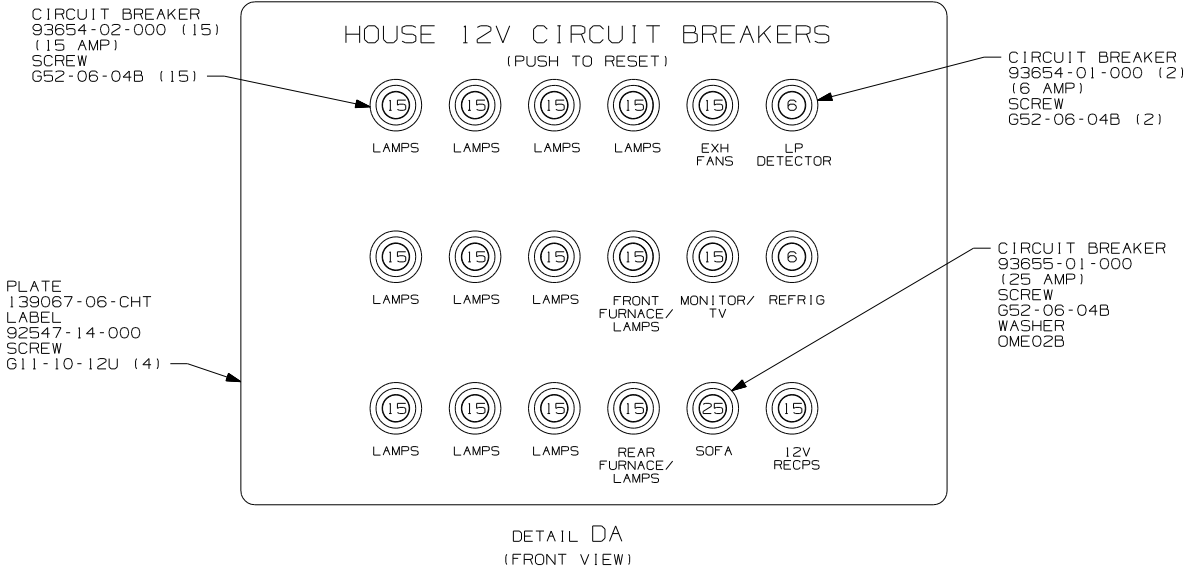
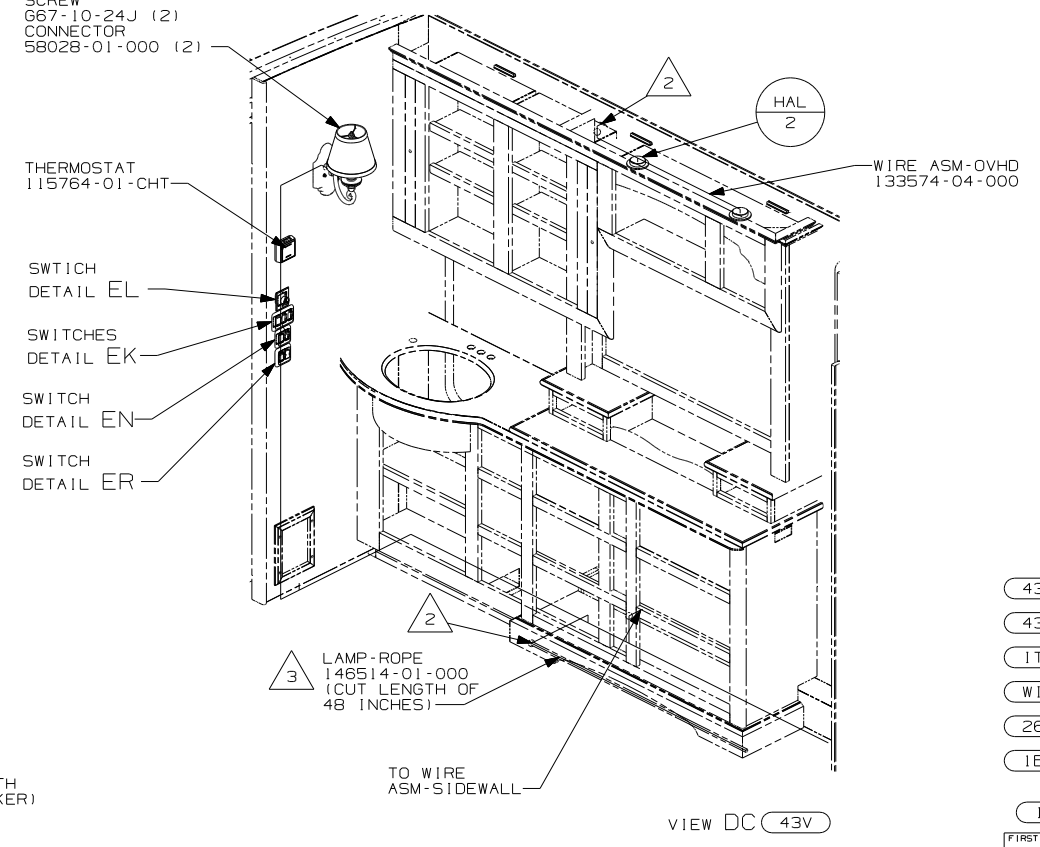
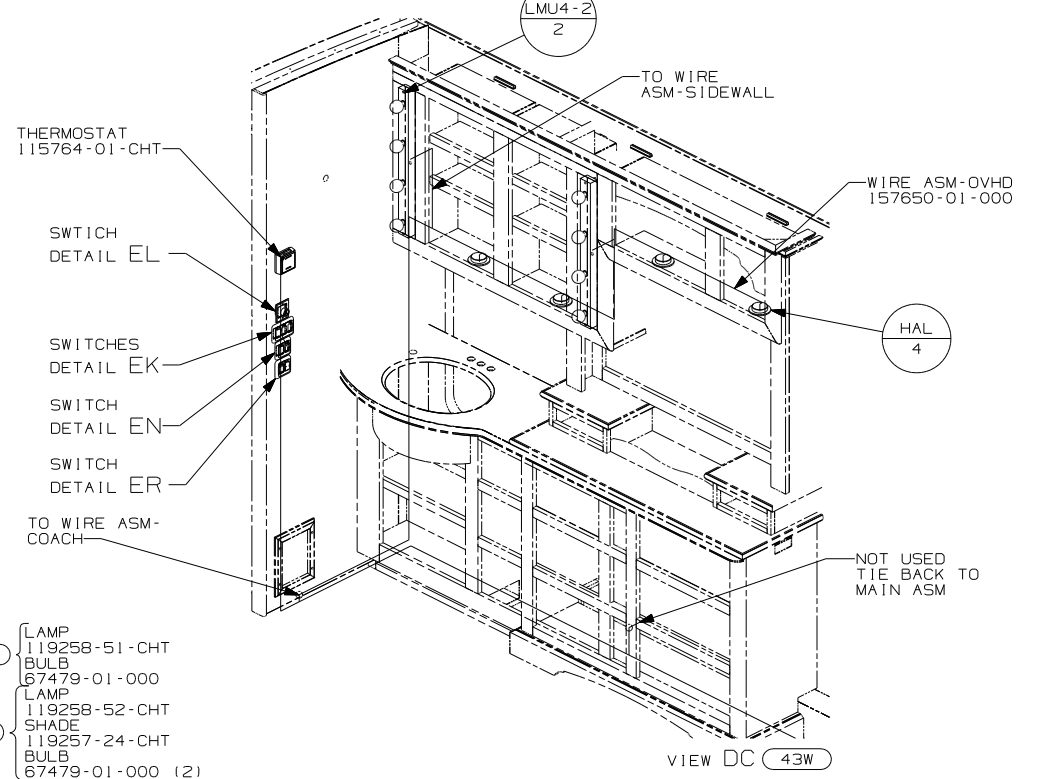
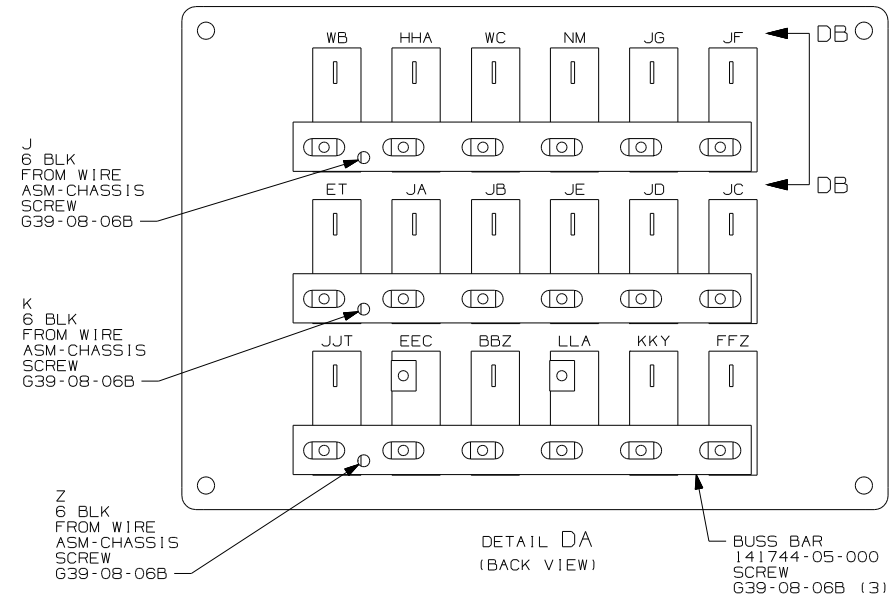
14 PLACE CONNECTOR ON THIS END.

13 ROUTE RCA CABLE FROM WIRE ASM-COACH ALONG WITH WIRE ASM-SLIDEOUT TO REAR STEREO.

12 LOCATION WITH 21L

- 14W DINETTE
- 26K REAR STEREO SYSTEM W/O
- 49N SLEEP NUMBER BED-KING SIZE
- 44X BED-QUEEN SIDEWALL
- 951 STAINLESS STEEL PACKAGE
- WIN WINNEBAGO ONLY
- ITA ITASCA ONLY
- 25D STEREO SYSTEM W/CD/DVD REAR
- 21L DINING TABLE/CHAIRS
- 21K DINING/COMPUTER TABLE/CHAIRS
- 265 CODES/STANDARDS-CSA/CMVSS
- 1B1 CODES/STANDARDS USA

FIRST USED		07 S40KD	
DO NOT SCALE DRAWING			
TITLE: WIRING INSTL-BODY, 12V			
SHEET 2	PART NO	156176	REV



- ITA LAMP 119258-51-CHT
- ITA BULB 67479-01-000
- WIN LAMP 119258-52-CHT
- WIN SHADE 119257-24-CHT
- WIN BULB 67479-01-000 (2)
- WIN SCREW 667-10-24J (2)
- WIN CONNECTOR 58028-01-000 (2)

- (43W) CABINET-LAVATORY
- (43V) CABINET-CHEST OF DRAWERS
- (ITA) ITASCA ONLY
- (WIN) WINNEBAGO ONLY
- (265) CODES/STANDARDS-CSA/CMVSS
- (1B1) CODES/STANDARDS USA

3 CUT ROPE LIGHT AT X MARKS ON LIGHT AND INSTALL CONNECTOR 146514-02-000.

2 PLACE CONNECTOR HERE TO MAKE CONNECTION TO MATING HOUSING.

1. ALL WIRES TO BE SECURED WITH CLAMP 10495 OR 10497 OR WIRE TIE 8343 OR 108046 EVERY 600MM, USE SCREW G67-XX-XXX OR G56-XX-XXX AS APPROPRIATE FOR INTALLATION.

NOTES:

FIRST USED	07 S40KD		
TITLE	DO NOT SCALE DRAWING		
	WIRING INSTL-BODY, 12V		
SHEET 4	PART NO	156176	REV

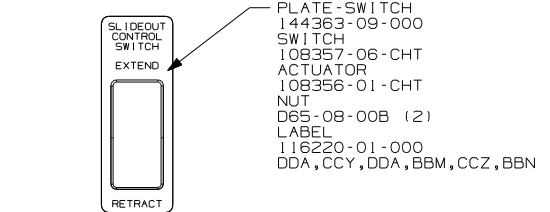
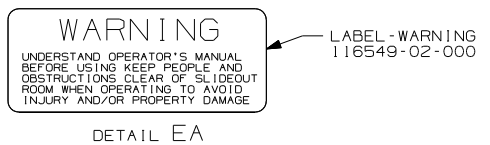
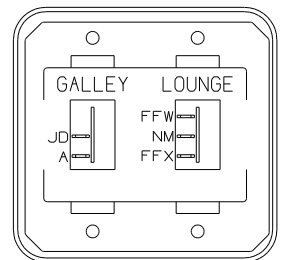


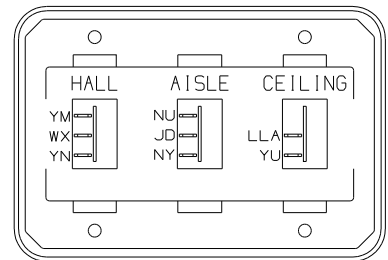
PLATE-SWITCH
144363-09-000
SWITCH
108357-06-CHT
ACTUATOR
108356-01-CHT
NUT
D65-08-00B (2)
LABEL
116220-01-000
DDA,CCY,DDA,BBM,CCZ,BBN



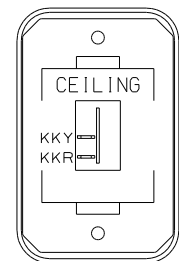
LABEL-WARNING
116549-02-000



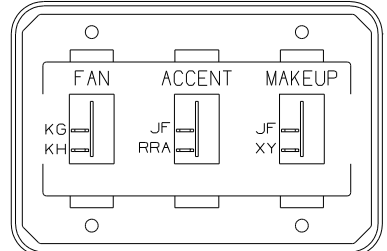
SWITCH-ROCKER
135740-01-CHT
135740-02-CHT
SWITCH-BASE
135741-02-CHT
SWITCH-BEZEL
135742-18-CHT
SCREW
G11-08-08U (4)



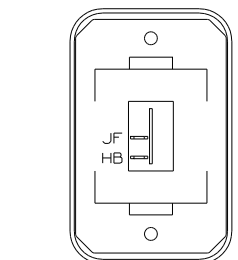
SWITCH-ROCKER
135740-01-CHT
135740-02-CHT (2)
SWITCH-BASE
135741-03-CHT
SWITCH-BEZEL
135742-25-CHT
SCREW
G11-08-08U (4)



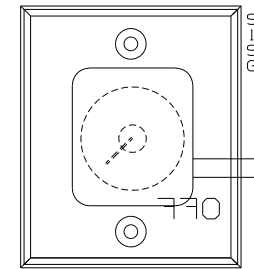
SWITCH-ROCKER
135740-01-CHT
SWITCH-BASE
135741-01-CHT
SWITCH-BEZEL
135742-07-CHT
SCREW
G11-08-08U (2)



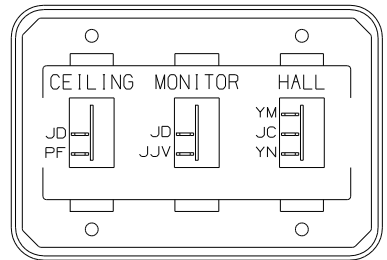
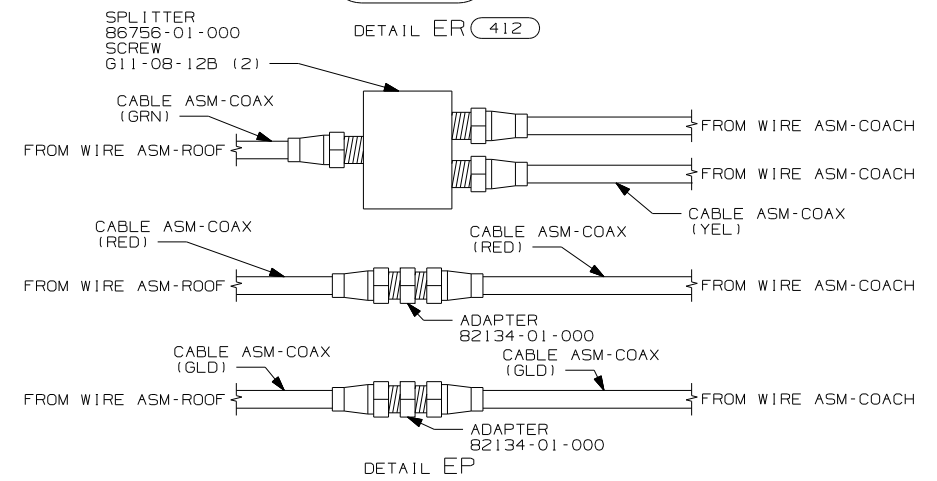
SWITCH-ROCKER
135740-01-CHT (3)
SWITCH-BASE
135741-03-CHT
SWITCH-BEZEL
135742-42-CHT
SCREW
G11-08-08U (6)



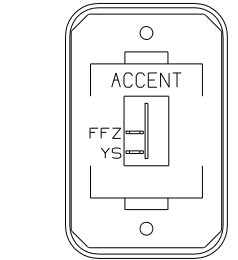
SWITCH-ROCKER
135740-01-CHT
SWITCH-BASE
135741-01-CHT
SWITCH-BEZEL
135742-01-CHT
SCREW
G11-08-08U (2)



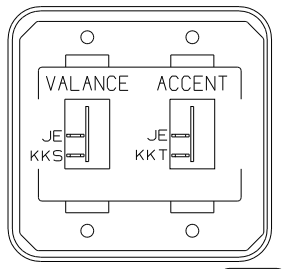
SWITCH
137889-01-000
SCREW
G11-06-10U (2)



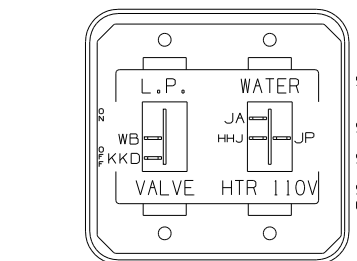
SWITCH-ROCKER
135740-01-CHT (2)
135740-02-CHT
SWITCH-BASE
135741-03-CHT
SWITCH-BEZEL
135742-32-CHT
SCREW
G11-08-08U (6)



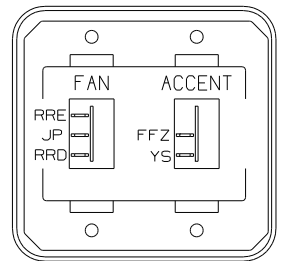
SWITCH-ROCKER
135740-01-CHT
SWITCH-BASE
135741-01-CHT
SWITCH-BEZEL
135742-50-CHT
SCREW
G11-08-08U (2)



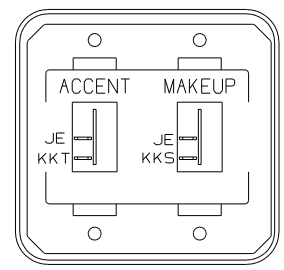
SWITCH-ROCKER
135740-01-CHT (2)
SWITCH-BASE
135741-02-CHT
SWITCH-BEZEL
135742-36-CHT
SCREW
G11-08-08U (4)



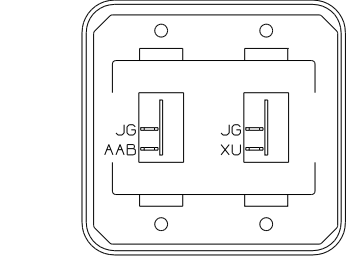
SWITCH-ROCKER
135740-01-CHT
135740-06-CHT
SWITCH-BASE
135741-02-CHT
SWITCH-BEZEL
135742-34-CHT
SCREW
G11-08-08U (4)



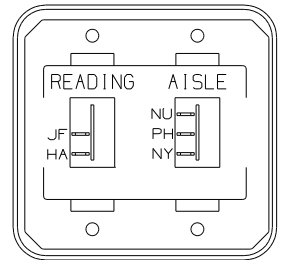
SWITCH-ROCKER
135740-01-CHT
135740-04-CHT
SWITCH-BASE
135741-02-CHT
SWITCH-BEZEL
135742-49-CHT
SCREW
G11-08-08U (4)
WIRE ASM-RESISTOR,FAN
140195-01-000



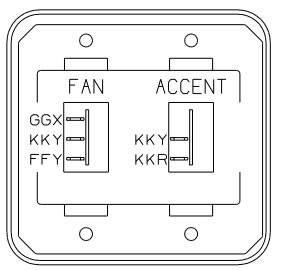
SWITCH-ROCKER
135740-01-CHT (2)
SWITCH-BASE
135741-02-CHT
SWITCH-BEZEL
135742-46-CHT
SCREW
G11-08-08U (4)



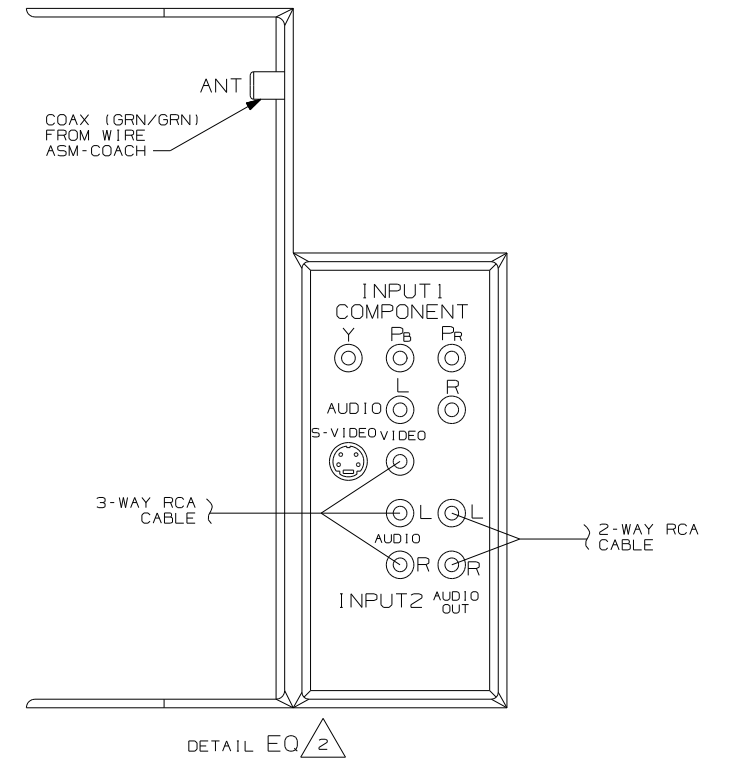
SWITCH-ROCKER
135740-01-CHT (2)
SWITCH-BASE
135741-02-CHT
SWITCH-BEZEL
135742-02-CHT
SCREW
G11-08-08U (4)



SWITCH-ROCKER
135740-01-CHT
135740-02-CHT
SWITCH-BASE
135741-02-CHT
SWITCH-BEZEL
135742-13-CHT
SCREW
G11-08-08U (4)



SWITCH-ROCKER
135740-01-CHT
135740-04-CHT
SWITCH-BASE
135741-02-CHT
SWITCH-BEZEL
135742-49-CHT
SCREW
G11-08-08U (4)
WIRE ASM-RESISTOR,FAN
140195-01-000

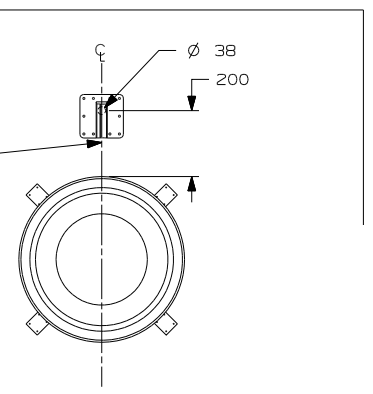


- (412) DECORATIVE LIGHT - CEILING
- (43V) CABINET-CHEST OF DRAWERS
- (43W) CABINET-LAVATORY
- (41Y) FAN - CEILING-BEDROOM
- (39Y) FAN - CEILING LOUNGE
- (265) CODES/STANDARDS-CSA/CMVSS
- (IB1) CODES/STANDARDS USA
- (IB1) 265

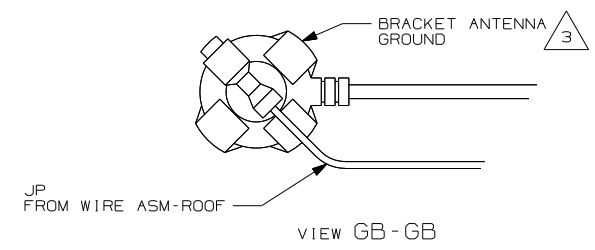
FIRST USED	07 S40KD
DO NOT SCALE DRAWING	
TITLE: WIRING INSTL-BODY, 12V	
SHEET 5	PART NO 156176 REV

NOTES:
 2 MENU, SETUP, AUDIO OUT, SELECT OPTION OUT VAO.
 1 CONNECT WIRE ASM-RESISTOR,FAN TO 2-PIN HOUSING LOCATED BY THE SWITCH WIRES.

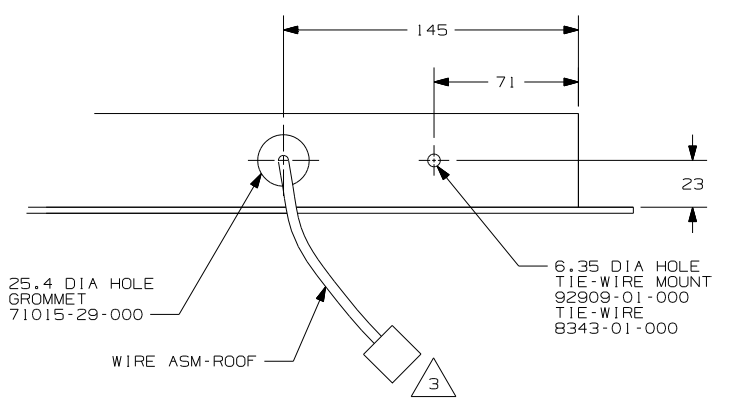
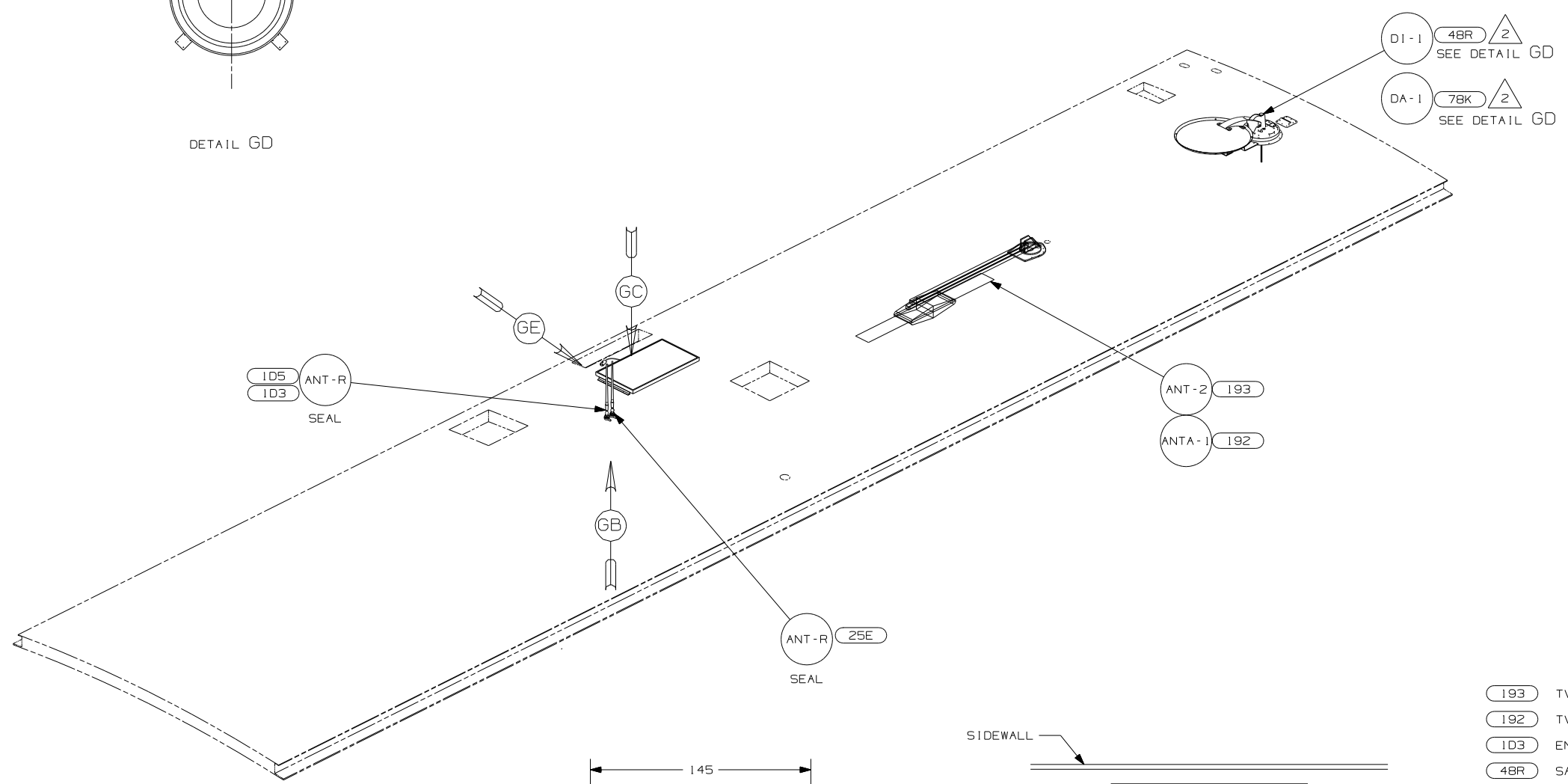
3 THE SATELLITE DISH WIRE CONNECTIONS ARE TO BE PLACED ON THE CENTERLINE OF THE MOTORHOME FACING FORWARD



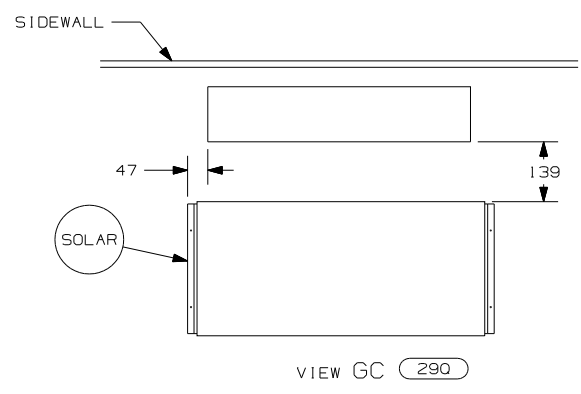
DETAIL GD



VIEW GB-GB



VIEW GE-GE

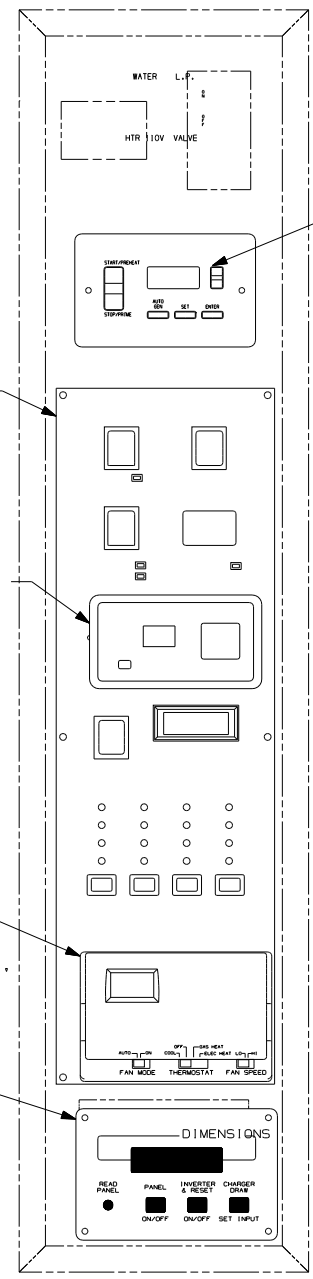
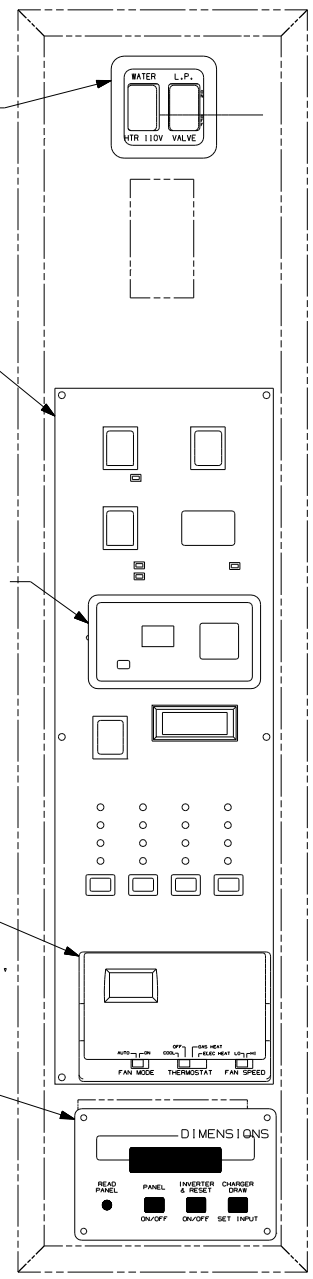


VIEW GC (290)

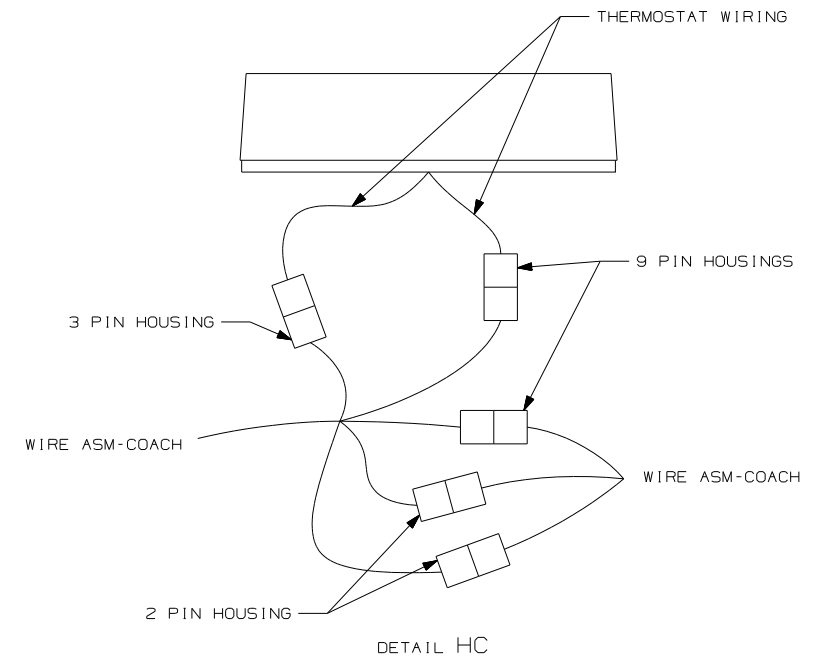
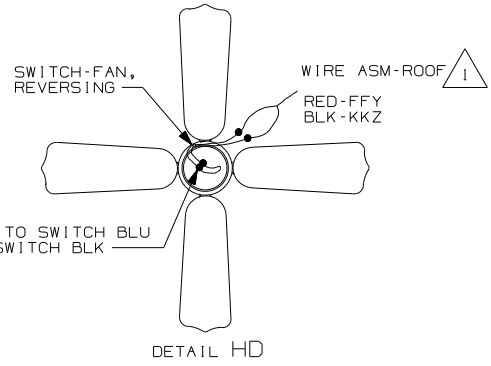
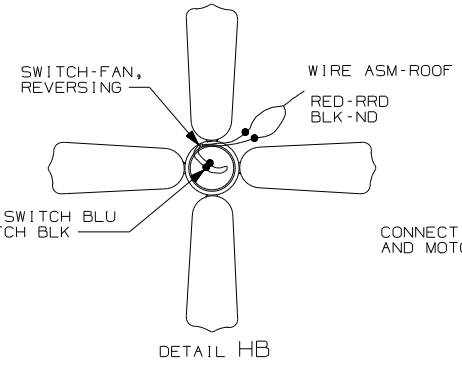
- (193) TV ANTENNA-AMPLIFIED SYSTEM
- (192) TV ANTENNA-AMPLIFIED SYS PWR
- (103) ENTERTAIN CTR/EXT TV-DVD
- (48R) SAT. SYS. IN-MOTION W/O RCVR.
- (290) SOLAR PANEL - 10 WATT
- (25E) REAR STEREO SYSTEM W/CD
- (105) ENTERTAINMENT CTR/EXT W/CD
- (78K) SATELLITE DISH-AUTOMATIC
- (265) CODES/STANDARDS-CSA/CMVSS
- (181) CODES/STANDARDS USA

- NOTES:
- 3 REMOVE ALL SHIPPING RESTRAINTS AND FIRMLY INSERT THE SUPPLIED PLUGS INTO THE APPROPRIATE SIZED HOLES AS SPECIFIED IN THE INSTALLATION PROCESS.
 - 2 SEE MANUFACTURER'S INSTALLATION FOR ADDITIONAL INFORMATION.
 - 1 WRAP BRACKET LEGS AROUND ANTENNA BASE.

FIRST USED	07 S40KD	
TITLE	DO NOT SCALE DRAWING	
	WIRING INSTL-BODY, 12V	
SHEET 7	PART NO 156176	REV



AUTO GEN START
158425-01-000 4



- NOTES:**
- 3 INSTALL GASKET ON BACK SIDE OF ONE PLACE INSTALLATION OF THERMOSTAT, MAKING SURE THAT THE GASKET COVERS AND SEALS THE HOLE THAT THE WIRES PASS THROUGH.
 - 2 CONNECT CIRCUIT WB FROM COACH WIRING TO RED WIRE ON REMOTE PANEL.
 - 1 TIE BACK CIRCUIT JC.

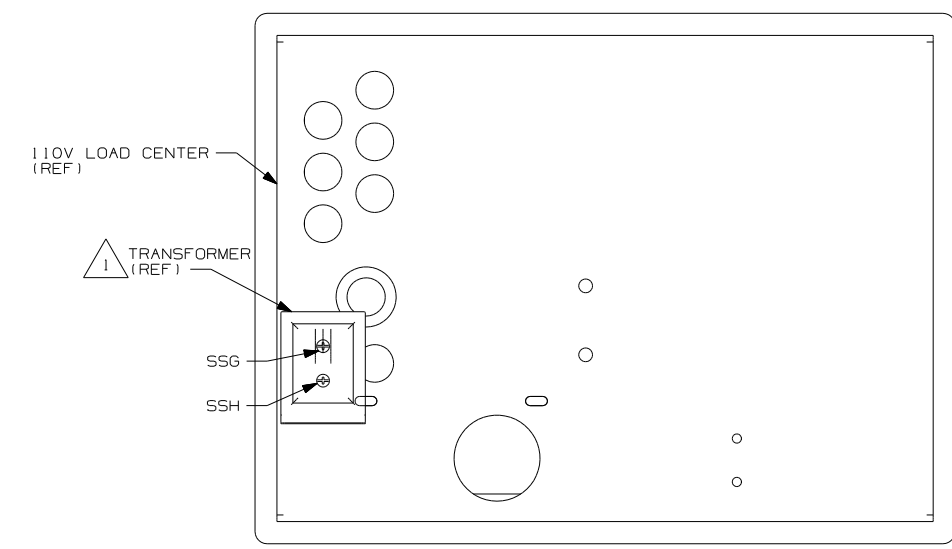
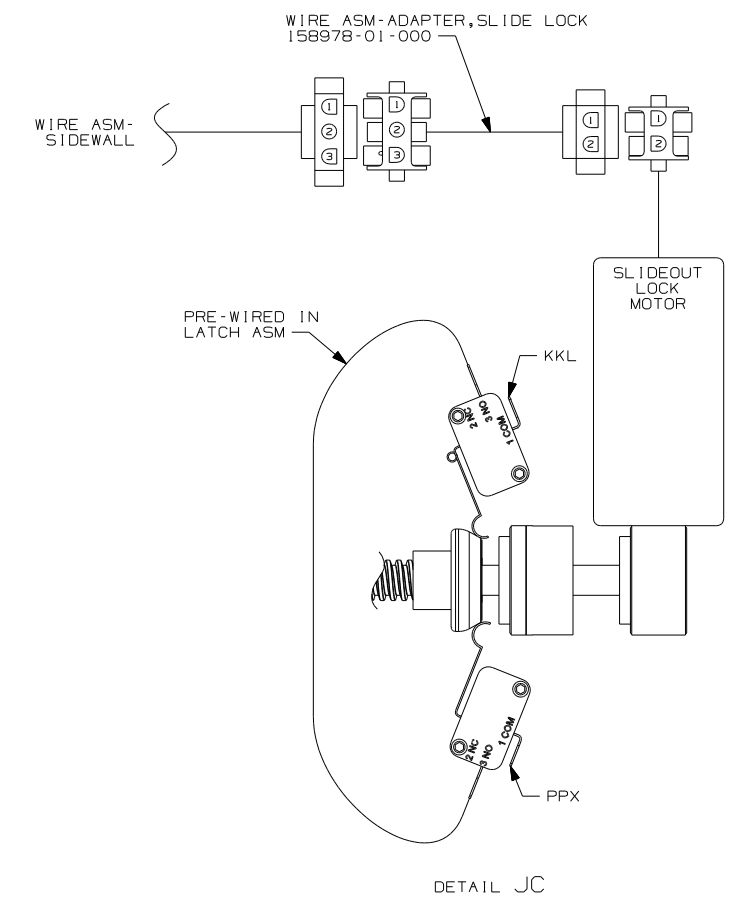
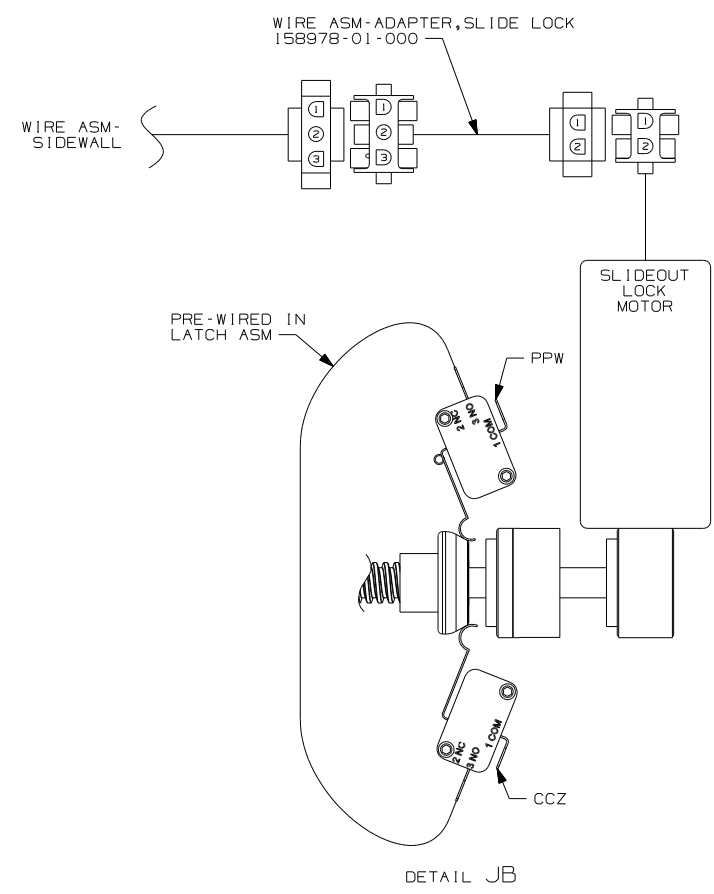
- 4 TO SET THE "GEN TYPE", NAVEIGATE TO THE "SETUP GENSET" DISPLAY AND PRESS "ENTER". "GENTYPE" WILL BE DISPLAYED. PRESS "SET" THE DISPLAY WILL FLASH. USE THE "UP/DOWN" KEY TO SELECT THE "GEN TYPE" AND PRESS "ENTER" WHEN THE "OD 7.5/8 TYPE IS DISPLAYED. THE "OD 7.5/8 IS NOW STORED IN PERMANENT MEMORY.

FOR ELECTRICAL TORQUE SPECIFICATIONS SEE DWG NO. 128783-01-000

FOR ELECTRICAL CALLOUTS SEE DWG NO. 121339-01-000

- 32W GENERATOR-START,AUTO SYSTEM
- 32V GENERATOR-START,AUTO SYS W/O
- 265 CODES/STANDARDS-CSA/CMVSS
- 1B1 CODES/STANDARDS USA

FIRST USED	
07 S40KD	
DO NOT SCALE DRAWING	
TITLE:	
WIRING INSTL-BODY, 12V	
SHEET 8	PART NO 156176 REV



- 32W GENERATOR-START, AUTO SYSTEM
- 265 CODES/STANDARDS-CSA/CMVSS
- 1B1 CODES/STANDARDS USA

FIRST USED	
07 S40KD	
DO NOT SCALE DRAWING	
TITLE:	
WIRING INSTL-BODY, 12V	
SHEET 9	PART NO 156176 REV

X-X FOR ELECTRICAL CALLOUTS SEE DWG NO. 121339-01-000

NOTES: SEE LOAD CENTER/ATS ASM FOR ADDITIONAL INFORMATION.