



DANGER

Danger of electrical shock, burns or death. Always remove all power sources before attempting any repair, service or diagnostic work. Power can be present from shore power, generator, inverter or battery. All power sources must be disabled and secured before performing any service.

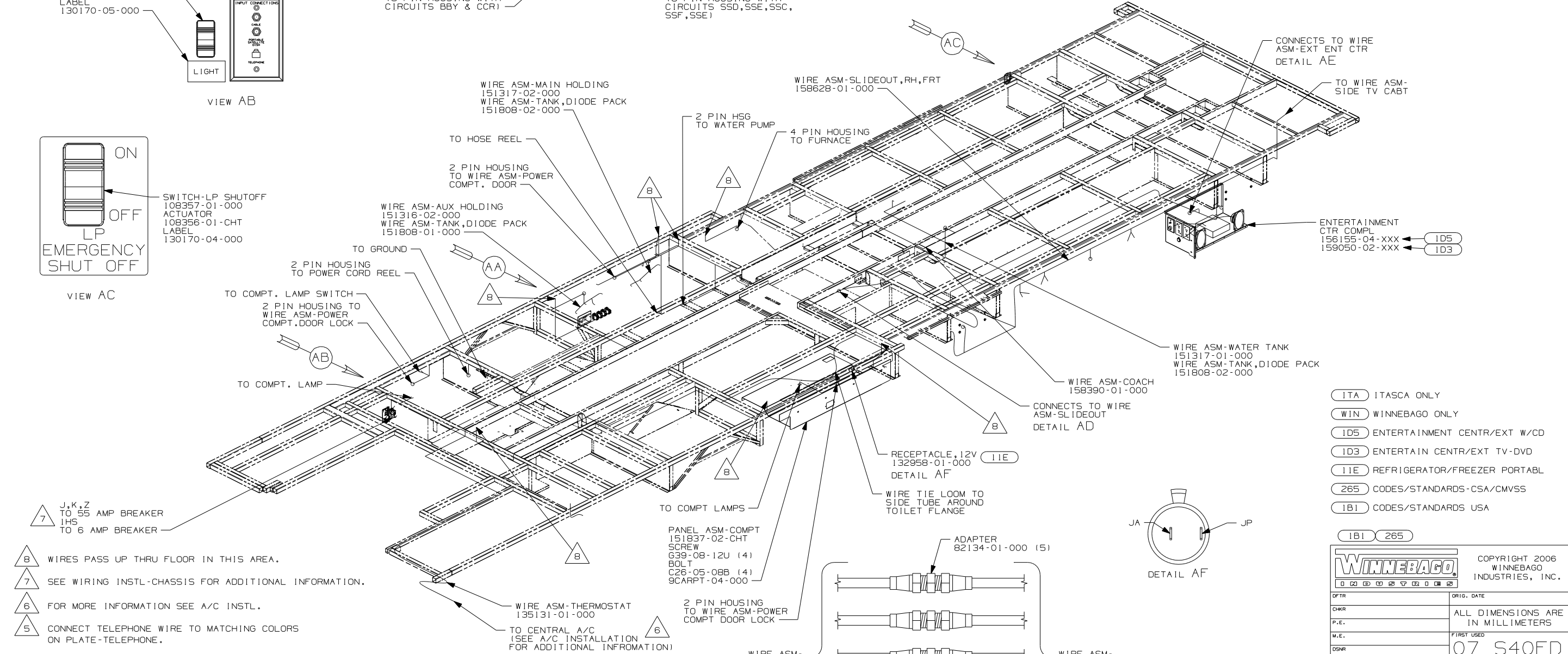
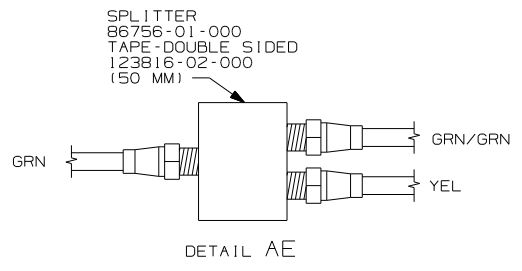
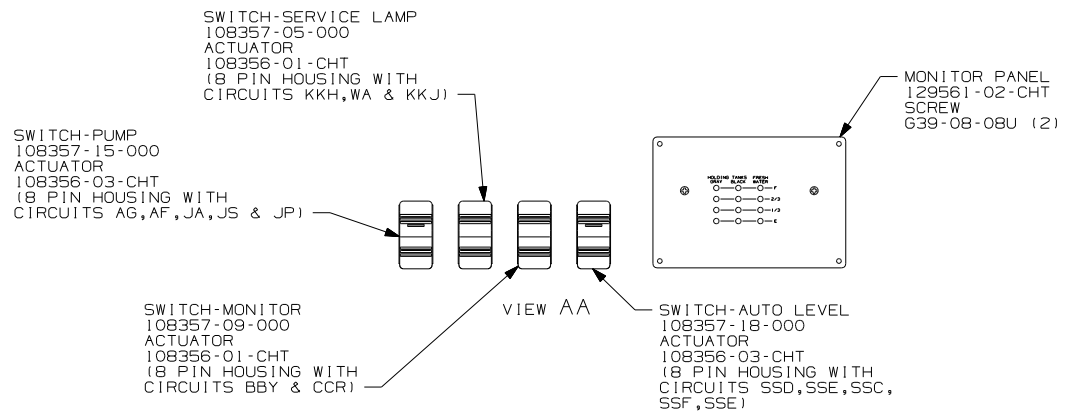
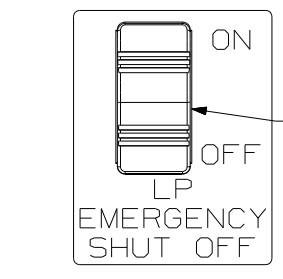
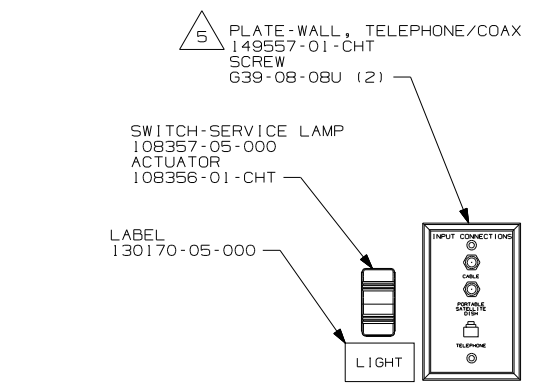


CAUTION

If you lack the skills, tools or equipment to perform diagnostic or repair work leave such work to an authorized Winnebago Industries dealer or other qualified shop.

DRAWING NO.	FEATURES
158386-01	(WIN)
158386-02	(ITA)

RELEASE	REV/DATE	DWG NO
	A	158386
REV ZONE	REVISION RECORD	DATE DFR-016



- 7 J,K,Z
TO 55 AMP BREAKER
IHS
TO 6 AMP BREAKER
- 8 WIRES PASS UP THRU FLOOR IN THIS AREA.
- 7 SEE WIRING INSTL-CHASSIS FOR ADDITIONAL INFORMATION.
- 6 FOR MORE INFORMATION SEE A/C INSTL.
- 5 CONNECT TELEPHONE WIRE TO MATCHING COLORS ON PLATE-TELEPHONE.
4. FOR MORE INFORMATION SEE WIRING DIAGRAM-BODY,110V.
3. ALL GROUND WIRE TO BE COVERED WITH TUBING 8041-02-000.
2. ALL 110V WIRE TO BE CLAMPED WITH CLAMP 10497-05-000 WITHIN 200 OF OUTLET BOXES, USE SCREW G67-10-12B.
1. ALL WIRES TO BE SECURED WITH CLAMP 10495 OR 10497 OR WIRE TIE 8343 OR 108046 EVERY 600MM, USE SCREW G67-XX-XXX OR G56-XX-XXX AS APPROPRIATE FOR INSTALLATION.

- (ITA) ITASCA ONLY
(WIN) WINNEBAGO ONLY
(ID5) ENTERTAINMENT CENTR/EXT W/CD
(ID3) ENTERTAIN CENTR/EXT TV-DVD
(IIE) REFRIGERATOR/FREEZER PORTABL
(265) CODES/STANDARDS-CSA/CMVSS
(IB1) CODES/STANDARDS USA
- (IB1) (265)

WINNEBAGO COPYRIGHT 2006
WINNEBAGO
INDUSTRIES, INC.

DFTR	ORIG. DATE
CHKR	ALL DIMENSIONS ARE IN MILLIMETERS
P.E.	FIRST USED
M.E.	07 S40FD
DSNR	

UNSPECIFIED TOLERANCES ARE:
WHOLE DIM (X) : 3
ONE-PLACE (X,X) : 1.5
TWO-PLACE (X,XX) : 0.50
ANGLE : 1°

MATERIAL:
THIRD ANGLE PROJECTION

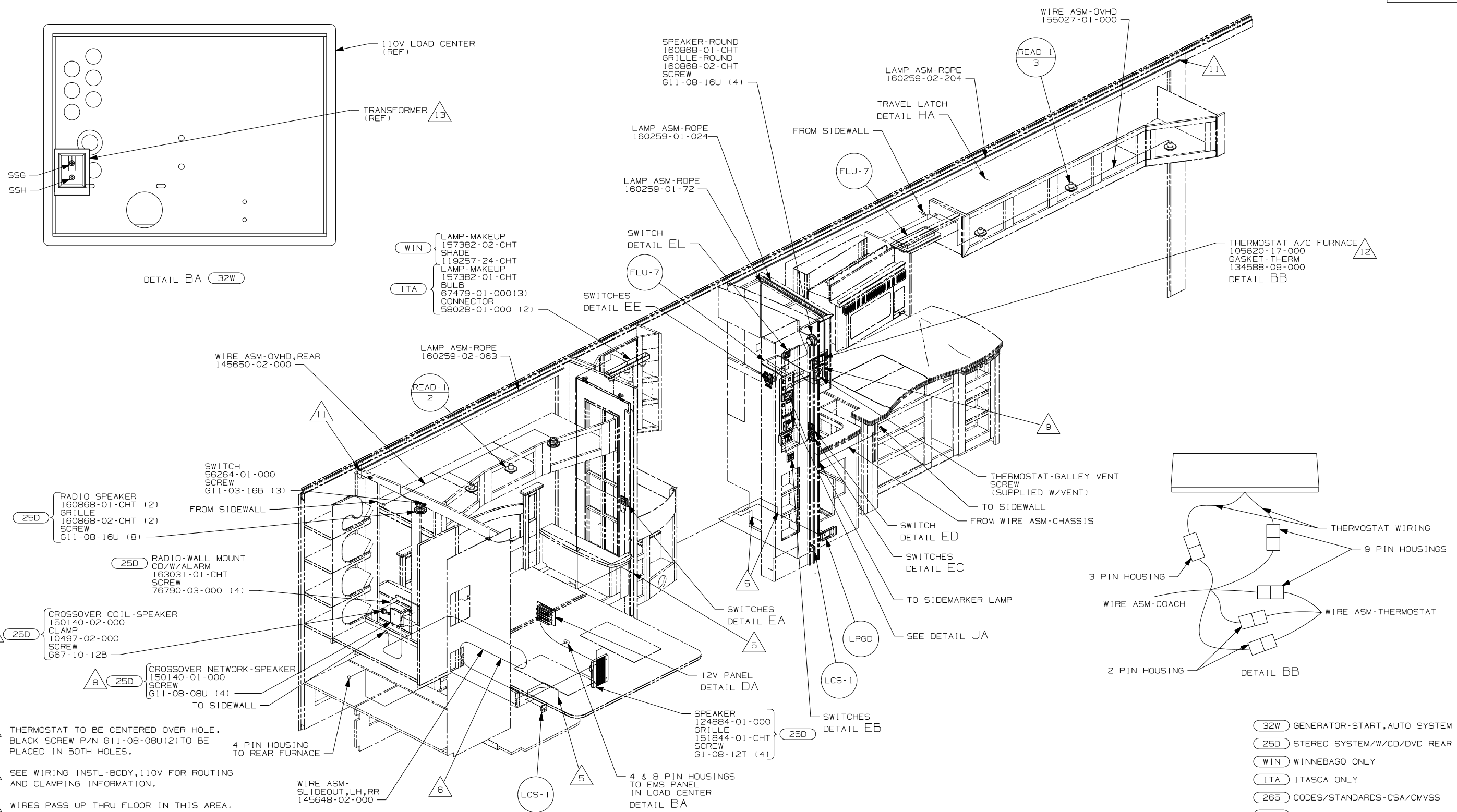
DO NOT SCALE DRAWING

TITLE:
WIRING INSTL-BODY, 12V

SHEET 1 of 9 PART NO 158386 REV

FOR ELECTRICAL TORQUE SPECIFICATIONS SEE DWG NO. 128783-01-000

(X-X) FOR ELECTRICAL CALLOUTS SEE DWG NO. 121339-01-000



- 7 THERMOSTAT TO BE CENTERED OVER HOLE. BLACK SCREW P/N G11-08-08U(2) TO BE PLACED IN BOTH HOLES.
- 6 SEE WIRING INSTL-BODY,110V FOR ROUTING AND CLAMPING INFORMATION.
- 5 WIRES PASS UP THRU FLOOR IN THIS AREA.
- 4. SEE WIRING DIAGRAM-BODY FOR ADDITIONAL INFORMATION.
- 3. ALL GROUND WIRE TO BE COVERED WITH TUBING 8041-02-000.
- 2. ALL 110V WIRE TO BE CLAMPED WITH CLAMP 10497-05-000 WITHIN 200 OF OUTLET BOXES, USE SCREW G67-10-12B.
- 1. ALL WIRES TO BE SECURED WITH CLAMP 10495 OR 10497 OR WIRE TIE 8343 OR 108046 EVERY 600MM, USE SCREW G67-XX-XXX OR G56-XX-XXX AS APPROPRIATE FOR INSTALLATION.

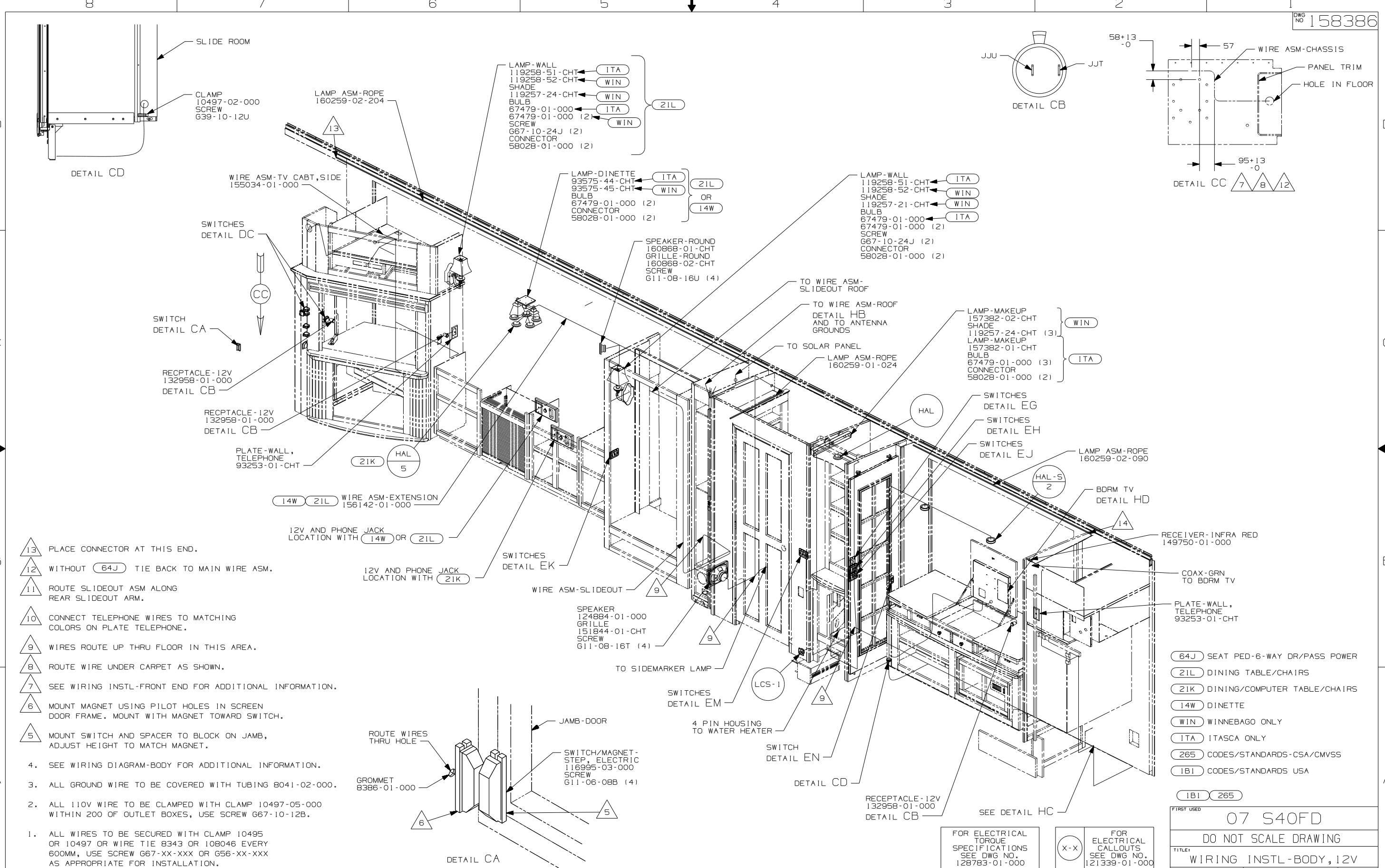
- 10 CONNECT CIRCUIT WB FROM COACH WIRING TO RED WIRE ON REMOTE PANEL.
- 9 PLACE CONNECTOR HERE TO MAKE CONNECTION TO MATING WIRE ASM.
- 8 MOUNT BOX AND COIL BEHIND REAR STEREO TO SLIDEOUT WALL.
- 13 SEE LOAD CENTER/ATS ASM FOR ADDITIONAL INFORMATION.
- 12 INSTALL GASKET ON BACKSIDE OF CABINET AFTER INSTALLATION OF THERMOSTAT, MAKING SURE THAT THE GASKET COVERS AND SEALS THE HOLE THAT THE WIRES PASS THROUGH.
- 11 PLACE CONNECTOR AT THIS END.

FOR ELECTRICAL TORQUE SPECIFICATIONS SEE DWG NO. 128783-01-000

FOR ELECTRICAL CALLOUTS SEE DWG NO. 121339-01-000

- 32W GENERATOR-START,AUTO SYSTEM
- 25D STEREO SYSTEM/W/CD/DVD REAR
- WIN WINNEBAGO ONLY
- ITA ITASCA ONLY
- 265 CODES/STANDARDS-CSA/CMVSS
- 1B1 CODES/STANDARDS USA

FIRST USED	
07 S40FD	
DO NOT SCALE DRAWING	
TITLE: WIRING INSTL-BODY,12V	
SHEET 2	PART NO 158386



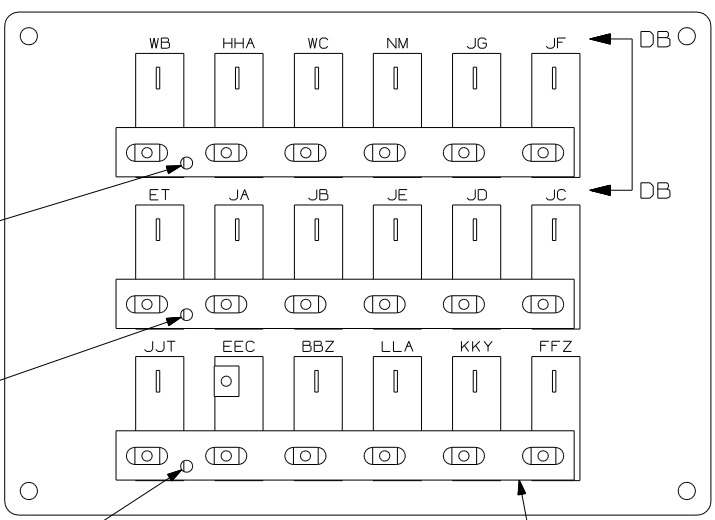
- NOTES:
1. ALL WIRES TO BE SECURED WITH CLAMP 10495 OR 10497 OR WIRE TIE 8343 OR 108046 EVERY 600MM, USE SCREW G67-XX-XXX OR G56-XX-XXX AS APPROPRIATE FOR INSTALLATION.
 2. ALL 110V WIRE TO BE CLAMPED WITH CLAMP 10497-05-000 WITHIN 200 OF OUTLET BOXES, USE SCREW G67-10-12B.
 3. ALL GROUND WIRE TO BE COVERED WITH TUBING 8041-02-000.
 4. SEE WIRING DIAGRAM-BODY FOR ADDITIONAL INFORMATION.
 5. MOUNT SWITCH AND SPACER TO BLOCK ON JAMB, ADJUST HEIGHT TO MATCH MAGNET.
 6. MOUNT MAGNET USING PILOT HOLES IN SCREEN DOOR FRAME. MOUNT WITH MAGNET TOWARD SWITCH.
 7. SEE WIRING INSTL-FRONT END FOR ADDITIONAL INFORMATION.
 8. ROUTE WIRE UNDER CARPET AS SHOWN.
 9. WIRES ROUTE UP THRU FLOOR IN THIS AREA.
 10. CONNECT TELEPHONE WIRES TO MATCHING COLORS ON PLATE TELEPHONE.
 11. ROUTE SLIDEOUT ASM ALONG REAR SLIDEOUT ARM.
 12. WITHOUT (64J) TIE BACK TO MAIN WIRE ASM.
 13. PLACE CONNECTOR AT THIS END.

- (64J) SEAT PED-6-WAY DR/PASS POWER
- (21L) DINING TABLE/CHAIRS
- (21K) DINING/COMPUTER TABLE/CHAIRS
- (14W) DINETTE
- (WIN) WINNEBAGO ONLY
- (ITA) ITASCA ONLY
- (265) CODES/STANDARDS-CSA/CMVSS
- (1B1) CODES/STANDARDS USA

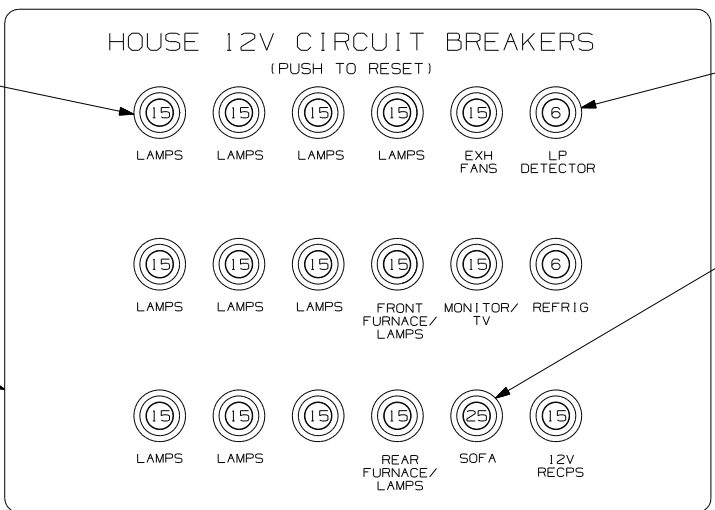
FOR ELECTRICAL TORQUE SPECIFICATIONS SEE DWG NO. 128783-01-000

(X-X) FOR ELECTRICAL CALLOUTS SEE DWG NO. 121339-01-000

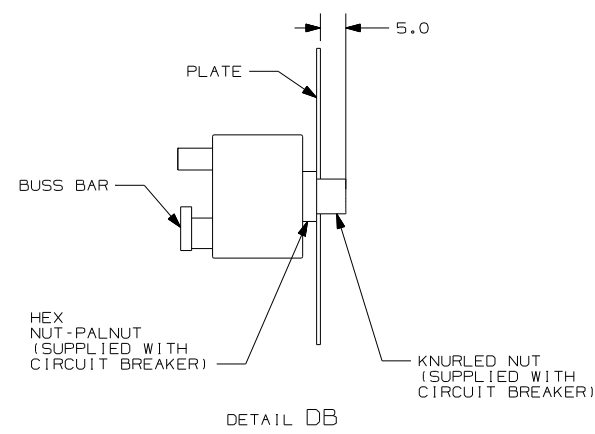
FIRST USED	
07 S40FD	
DO NOT SCALE DRAWING	
TITLE: WIRING INSTL-BODY, 12V	
SHEET 3	PART NO 158386 REV



DETAIL DA (BACK VIEW)



DETAIL DA (FRONT VIEW)



DETAIL DB

J
6 BLK
FROM WIRE
ASM-CHASSIS
SCREW
G39-08-06B

K
6 BLK
FROM WIRE
ASM-CHASSIS
SCREW
G39-08-06B

Z
6 BLK
FROM WIRE
ASM-CHASSIS
SCREW
G39-08-06B

BUSS BAR
141744-05-000 (3)
SCREW
G39-08-06B (3)

CIRCUIT BREAKER
93654-02-000 (15)
(15 AMP)
SCREW
G52-06-04B (15)

CIRCUIT BREAKER
93654-01-000 (2)
(6 AMP)
SCREW
G52-06-04B (2)

PLATE
139067-06-CHT
LABEL
92547-14-000
SCREW
G11-10-12U (4)

CIRCUIT BREAKER
93655-01-000
(25 AMP)
SCREW
G52-06-04B
WASHER
OME02B

SWITCH-LOUNGE
145638-10-CHT
(CONNECT HOUSING WITH
CIRCUITS FFW,PL,FFX)
DETAIL DE

SWITCH-PORCH
145638-01-CHT
(CONNECT HOUSING WITH
CIRCUITS NM,PJ)
DETAIL DE

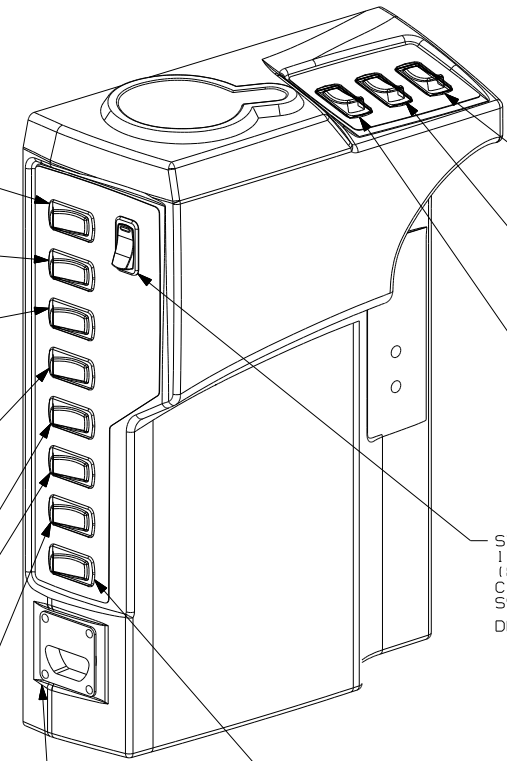
SWITCH-DOOR LOCKS
145638-05-CHT
(CONNECT HOUSING WITH
CIRCUITS PX,MK,PY)
DETAIL DE

SWITCH-COMPTMENT
DOOR LOCKS
145638-05-CHT
(CONNECT HOUSING WITH
CIRCUITS DDZ,MK,EEA)
DETAIL DE

SWITCH-AWNING SELECTOR
145638-07-CHT
(CONNECT HOUSING WITH
CIRCUITS FFP,FFV,FFU,FFL)
DETAIL DE

SWITCH-AWNING CONTROL
145638-09-CHT
(CONNECT HOUSING WITH
CIRCUITS FFM,FFU,FFK
FFR,FFV,FFN)
DETAIL DE

SWITCH-STEP
145638-01-CHT
(CONNECT HOUSING WITH
CIRCUITS ER,ES)
DETAIL DD



DETAIL DC

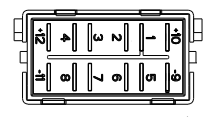
SWITCH-LAMP
145638-01-CHT
(CONNECT HOUSING WITH
CIRCUITS NM,HA)
DETAIL DF

SWITCH-VISOR
145638-12-CHT
(CONNECT HOUSING WITH
CIRCUITS HHN,MK,HHM,
HHM,MU,HHN)
DETAIL DF

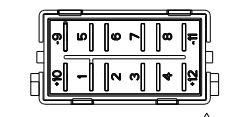
SWITCH-COVER
145638-09-CHT
(CONNECT HOUSING WITH
CIRCUITS GX,HHC,KA
KA,HHD,GX)
DETAIL DF

SWITCH-AUTO LEVEL
145638-06-CHT
(CONNECT HOUSING WITH
CIRCUITS SSD,SSE,SSC,
SSF,SSE)
DETAIL DF

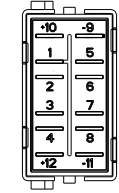
SWITCH-BATTERY DISCONNECT
145638-09-CHT
(CONNECT HOUSING WITH
CIRCUITS KF,LH,LJ,LJ,LG,KF)
DETAIL DD



DETAIL DD 1



DETAIL DE 1



DETAIL DF 1

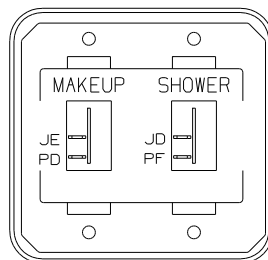
NOTES:
1 DETAIL IS LOOKING AT SWITCH FROM THE BACKSIDE OF THE SWITCH.

FOR ELECTRICAL TORQUE SPECIFICATIONS SEE DWG NO. 128783-01-000

X-X FOR ELECTRICAL CALLOUTS SEE DWG NO. 121339-01-000

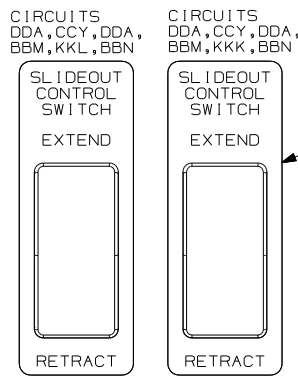
- 43W CABINET-LAVATORY
- 43V CABINET-CHEST OF DRAWERS
- 265 CODES/STANDARDS-CSA/CMVSS
- 1B1 CODES/STANDARDS USA

FIRST USED	07 S40FD
TITLE	DO NOT SCALE DRAWING
WIRING INSTL-BODY, 12V	
SHEET 4	PART NO 158386 REV



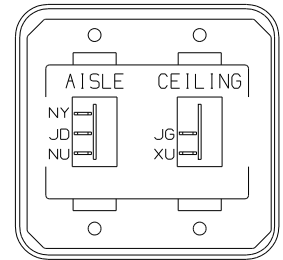
SWITCH-ROCKER 135740-01-CHT (2)
SWITCH-BASE 135741-02-CHT
SWITCH-BEZEL 135742-20-CHT
SCREW G11-08-08U (4)

DETAIL EA

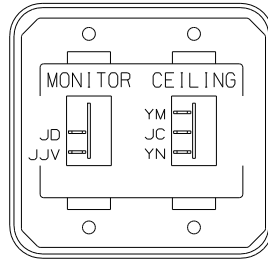


CIRCUITS DDA,CCY,DDA, BBM,KKL,BBN

PLATE-SWITCH 144363-10-CHT (2)
SWITCH 108357-06-000 (2)
ACTUATOR 108356-01-CHT (2)
NUT D65-08-00B (2)
LABEL 116220-01-000 (2)

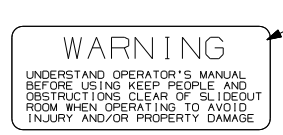


SWITCH-ROCKER 135740-01-CHT
135740-02-CHT
SWITCH-BASE 135741-02-CHT
SWITCH-BEZEL 135742-13-CHT
SCREW G11-08-08U (4)



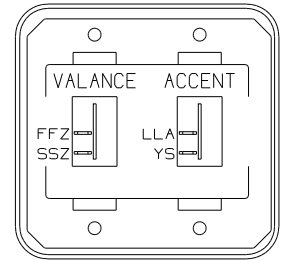
SWITCH-ROCKER 135740-01-CHT
135740-02-CHT
SWITCH-BASE 135741-02-CHT
SWITCH-BEZEL 135742-31-CHT
SCREW G11-08-08U (4)

DETAIL EB



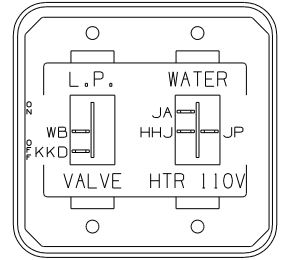
DETAIL EE

LABEL-WARNING 116549-02-000



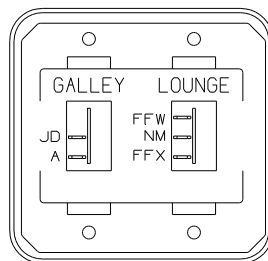
SWITCH-ROCKER 135740-01-CHT (2)
SWITCH-BASE 135741-02-CHT
SWITCH-BEZEL 135742-36-CHT
SCREW G11-08-08U (4)

DETAIL EK



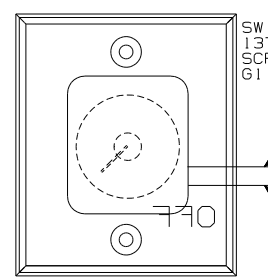
SWITCH-ROCKER 135740-01-CHT
135740-06-CHT
SWITCH-BASE 135741-02-CHT
SWITCH-BEZEL 135742-34-CHT
SCREW G11-08-08U (4)

DETAIL EL



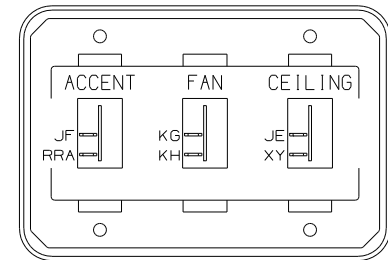
SWITCH-ROCKER 135740-01-CHT
135740-02-CHT
SWITCH-BASE 135741-02-CHT
SWITCH-BEZEL 135742-18-CHT
SCREW G11-08-08U (4)

DETAIL EC



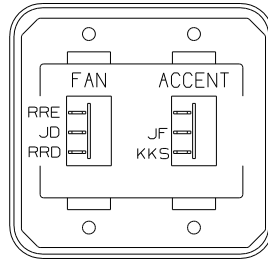
DETAIL EG

SWITCH 137889-01-000
SCREW G11-06-10U (2)



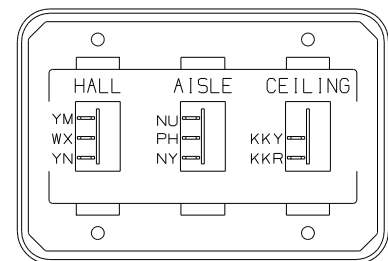
SWITCH-ROCKER 135740-01-CHT (3)
SWITCH-BASE 135741-03-CHT
SWITCH-BEZEL 135742-48-CHT
SCREW G11-08-08U (4)

DETAIL EM



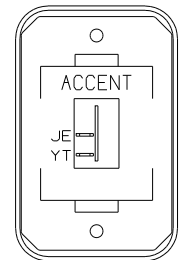
SWITCH-ROCKER 135740-01-CHT
135740-04-CHT
SWITCH-BASE 135741-01-CHT
SWITCH-BEZEL 135742-49-CHT
SCREW G11-06-16U (4)
WIRE ASM-RESISTOR,FAN 140195-01-000

DETAIL ED (39Y)



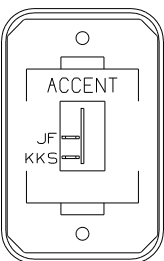
DETAIL EH

SWITCH-ROCKER 135740-01-CHT
135740-02-CHT (2)
SWITCH-BASE 135741-03-CHT
SWITCH-BEZEL 135742-25-CHT
SCREW G11-08-08U (4)



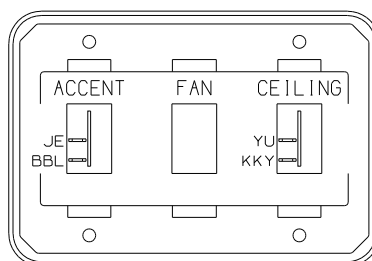
DETAIL EN

SWITCH-ROCKER 135740-01-CHT
SWITCH-BASE 135741-01-CHT
SWITCH-BEZEL 135742-50-CHT
SCREW G11-08-08U (2)



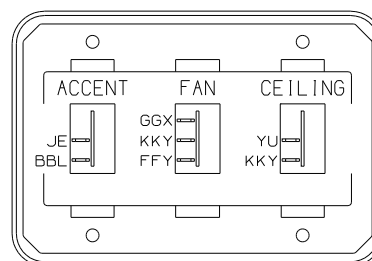
DETAIL ED (39B)

SWITCH-ROCKER 135740-01-CHT
SWITCH-BASE 135741-01-CHT
SWITCH-BEZEL 135742-50-CHT
SCREW G11-08-08U (2)



DETAIL EJ

SWITCH-ROCKER 135740-01-CHT (2)
SWITCH-BLANK 145754-01-CHT
SWITCH-BASE 135741-03-CHT
SWITCH-BEZEL 135742-48-CHT
SCREW G11-08-08U (4)



DETAIL EJ (41Y)

SWITCH-ROCKER 135740-01-CHT (2)
135740-04-CHT
SWITCH-BASE 135741-03-CHT
SWITCH-BEZEL 135742-48-CHT
SCREW G11-08-08U (4)
WIRE ASM-RESISTOR,FAN 140195-01-000

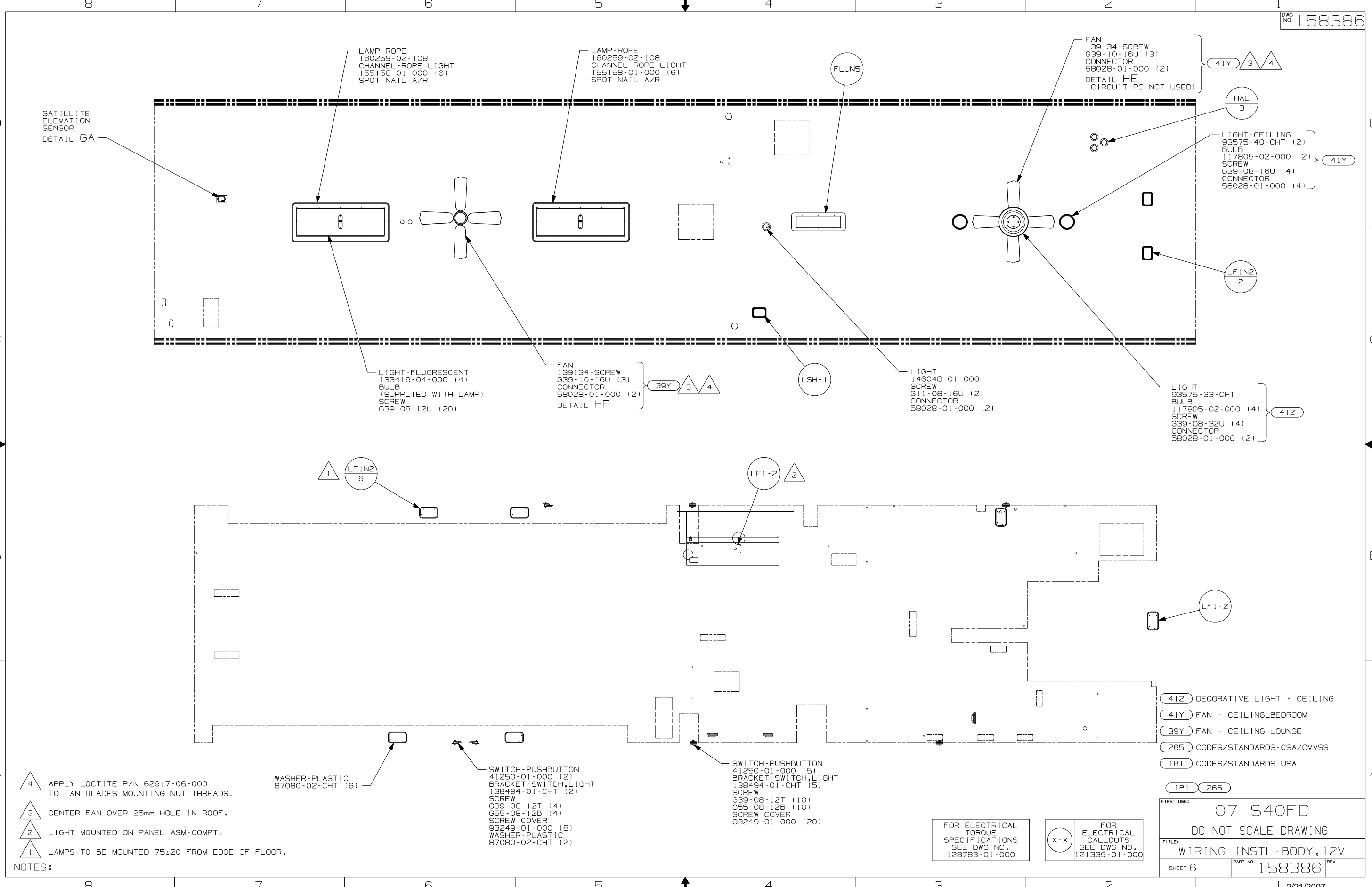
- (41Y) FAN - CEILING_BEDROOM
- (39Y) FAN - CEILING LOUNGE
- (39B) FAN-CEILING-WITHOUT
- (265) CODES/STANDARDS-CSA/CMVSS
- (1B1) CODES/STANDARDS USA

FIRST USED	07 S40FD
TITLE	DO NOT SCALE DRAWING
WIRING INSTL-BODY,12V	
SHEET 5	PART NO 158386 REV

NOTES: 1 CONNECT WIRE ASM-RESISTOR,FAN TO 2 PIN HOUSING LOCATED BY THE SWITCH WIRES.

FOR ELECTRICAL TORQUE SPECIFICATIONS SEE DWG NO. 128783-01-000

FOR ELECTRICAL CALLOUTS SEE DWG NO. 121339-01-000



SATILLITE ELEVATION SENSOR
DETAIL GA

LAMP-ROPE
160259-02-108
CHANNEL-ROPE LIGHT
155158-01-000 (6)
SPOT NAIL A/R

LAMP-ROPE
160259-02-108
CHANNEL-ROPE LIGHT
155158-01-000 (6)
SPOT NAIL A/R

FAN
139134-SCREW
G39-10-16U (3)
CONNECTOR
58028-01-000 (2)
DETAIL HE
(CIRCUIT PC NOT USED)

41Y 3 4

HAL
3

LIGHT-CEILING
93575-40-CHT (2)
BULB
117805-02-000 (2)
SCREW
G39-08-16U (4)
CONNECTOR
58028-01-000 (4)

41Y

LF1N2
2

LIGHT-FLUORESCENT
133416-04-000 (4)
BULB
(SUPPLIED WITH LAMP)
SCREW
G39-08-12U (20)

FAN
139134-SCREW
G39-10-16U (3)
CONNECTOR
58028-01-000 (2)
DETAIL HF

39Y 3 4

LSH-1

LIGHT
146048-01-000
SCREW
G11-08-16U (2)
CONNECTOR
58028-01-000 (2)

LIGHT
93575-33-CHT
BULB
117805-02-000 (4)
SCREW
G39-08-32U (4)
CONNECTOR
58028-01-000 (2)

412

1 LF1N2
6

LF1-2 2

LF1-2

- 4 APPLY LOCTITE P/N 62917-06-000 TO FAN BLADES MOUNTING NUT THREADS.
- 3 CENTER FAN OVER 25mm HOLE IN ROOF.
- 2 LIGHT MOUNTED ON PANEL ASM-COMPT.
- 1 LAMPS TO BE MOUNTED 75±20 FROM EDGE OF FLOOR.

WASHER-PLASTIC
87080-02-CHT (6)

SWITCH-PUSHBUTTON
41250-01-000 (2)
BRACKET-SWITCH,LIGHT
138494-01-CHT (2)
SCREW
G39-08-12T (4)
G55-08-12B (4)
SCREW COVER
93249-01-000 (8)
WASHER-PLASTIC
87080-02-CHT (2)

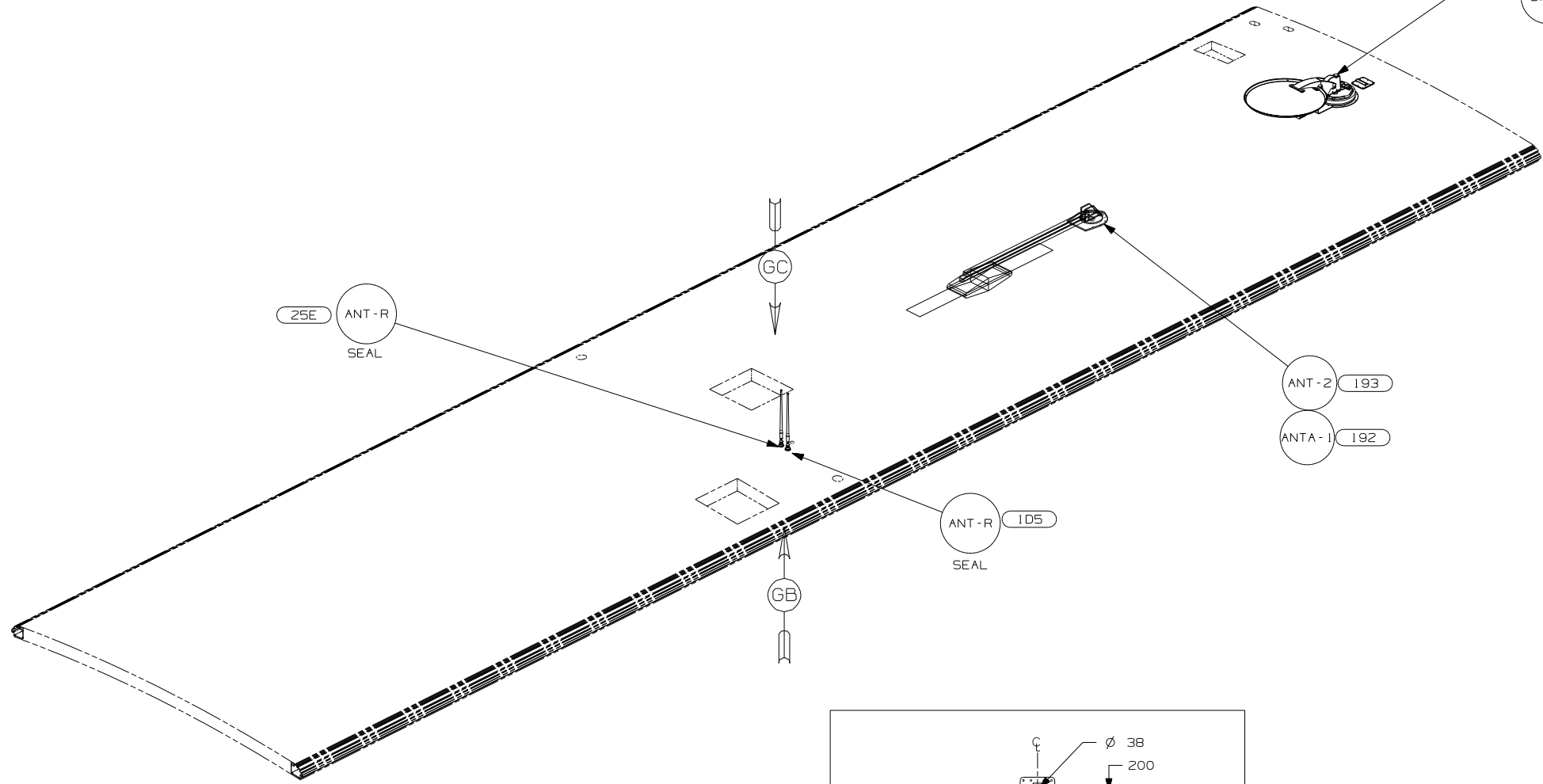
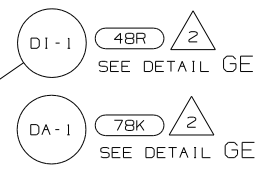
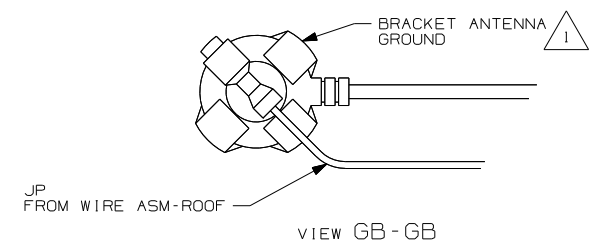
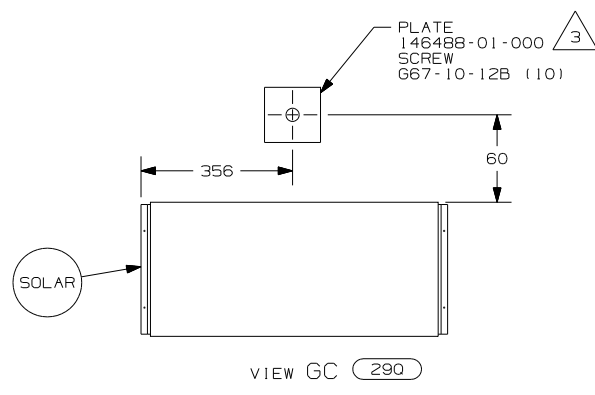
SWITCH-PUSHBUTTON
41250-01-000 (5)
BRACKET-SWITCH,LIGHT
138494-01-CHT (5)
SCREW
G39-08-12T (10)
G55-08-12B (10)
SCREW COVER
93249-01-000 (20)

FOR ELECTRICAL TORQUE SPECIFICATIONS SEE DWG NO. 128783-01-000

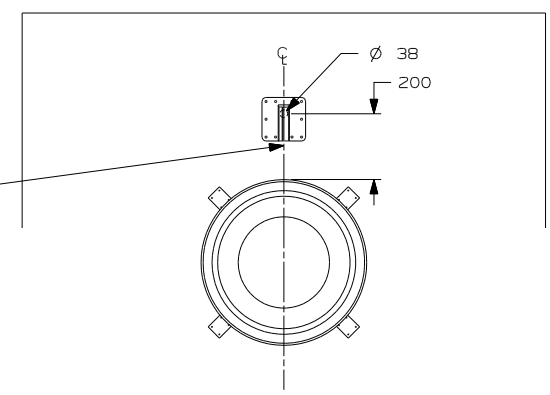
FOR ELECTRICAL CALLOUTS SEE DWG NO. 121339-01-000

- 412 DECORATIVE LIGHT - CEILING
- 41Y FAN - CEILING_BEDROOM
- 39Y FAN - CEILING LOUNGE
- 265 CODES/STANDARDS-CSA/CMVSS
- 1B1 CODES/STANDARDS USA

FIRST USED	07 S40FD	
TITLE:	DO NOT SCALE DRAWING	
	WIRING INSTL-BODY, 12V	
SHEET 6	PART NO	158386
	REV	



THE SATELLITE DISH WIRE CONNECTIONS ARE TO BE PLACED ON THE CENTERLINE OF THE MOTORHOME FACING FORWARD



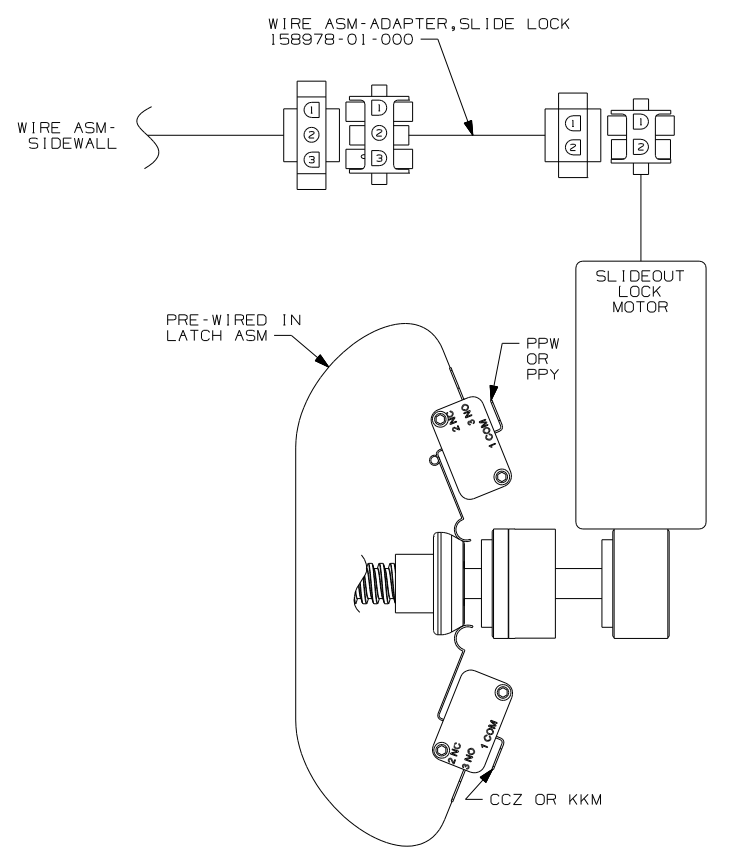
- (193) TV ANTENNA-AMPLIFIED SYSTEM
- (192) TV ANTENNA-AMPLIFIED SYS PWR
- (48R) SAT. SYS. IN-MOTION W/O RCVR.
- (290) SOLAR PANEL - 10 WATT
- (25E) REAR STEREO SYSTEM W/CD
- (105) ENTERTAINMENT CTR/EXT W/CD
- (78K) SATELLITE DISH-AUTOMATIC
- (265) CODES/STANDARDS-CSA/CMVSS
- (1B1) CODES/STANDARDS USA

- NOTES:
- 4 REMOVE ALL SHIPPING RESTRAINTS AND FIRMLY INSERT THE SUPPLIED PLUGS INTO THE APPROPRIATE SIZED HOLES AS SPECIFIED IN THE INSTALLATION PROCESS.
 - 3 SEAL
 - 2 SEE MANUFACTURER'S INSTALLATION FOR ADDITIONAL INFORMATION.
 - 1 WRAP BRACKET LEGS AROUND ANTENNA BASE.

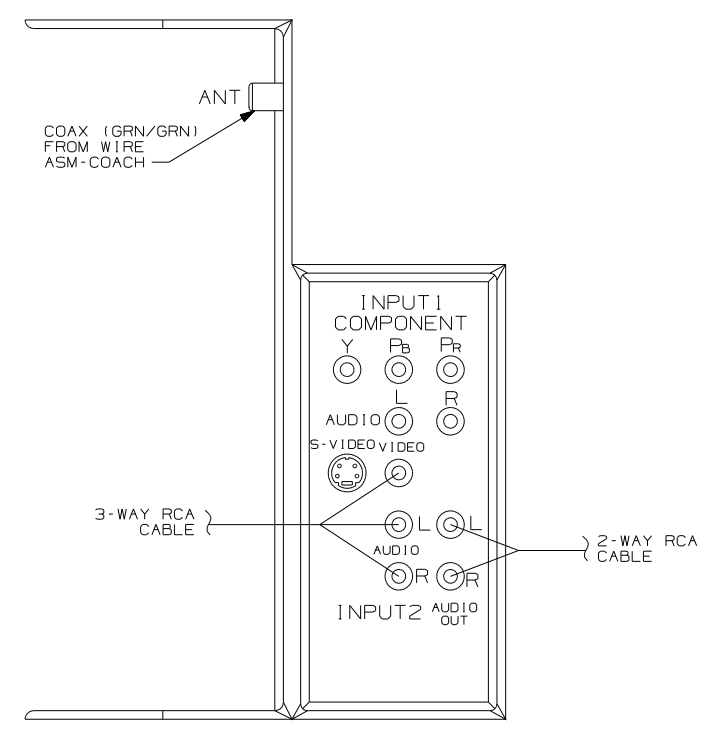
FOR ELECTRICAL TORQUE SPECIFICATIONS SEE DWG NO. 128783-01-000

FOR ELECTRICAL CALLOUTS SEE DWG NO. 121339-01-000

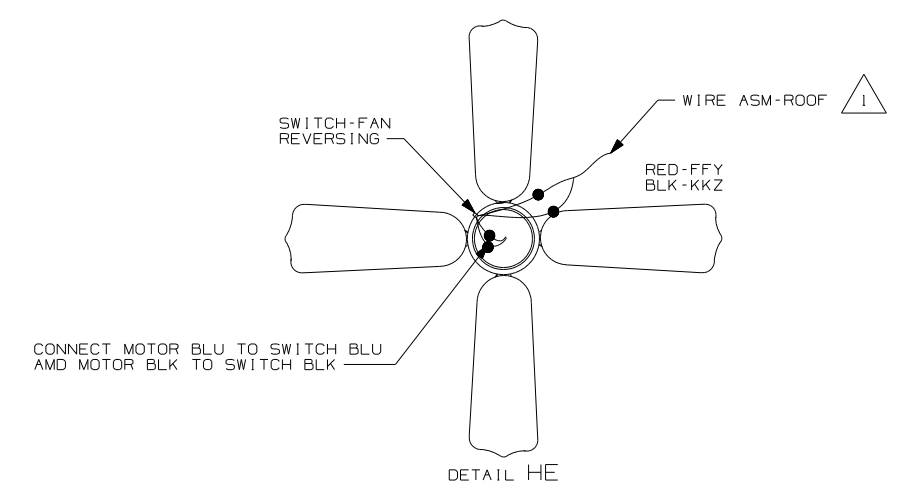
FIRST USED		07 S40FD	
DO NOT SCALE DRAWING			
TITLE: WIRING INSTL-BODY, 12V			
SHEET 7	PART NO	158386	REV



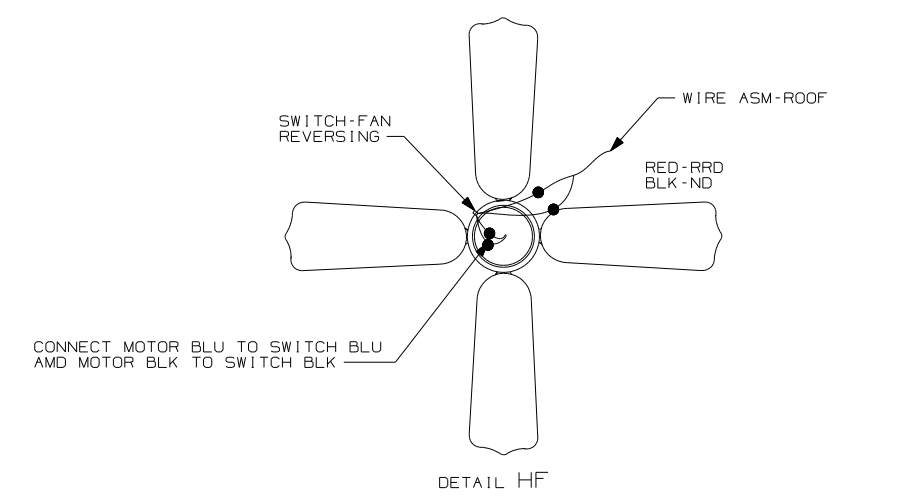
DETAIL HA



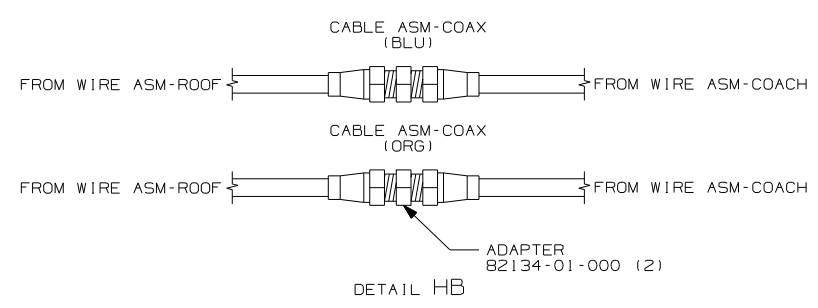
DETAIL HD 2



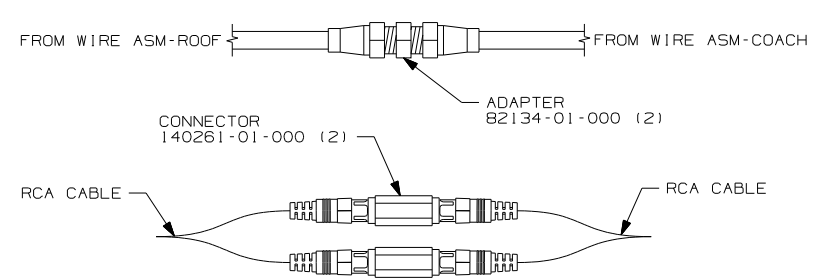
DETAIL HE



DETAIL HF



DETAIL HB



DETAIL HC

2 MENU, SETUP, AUDIO OUT, SELECT OPTION OUT X VAO.

1 TIE BACK CIRCUIT PC.

NOTES:

FOR ELECTRICAL TORQUE SPECIFICATIONS SEE DWG NO. 128783-01-000

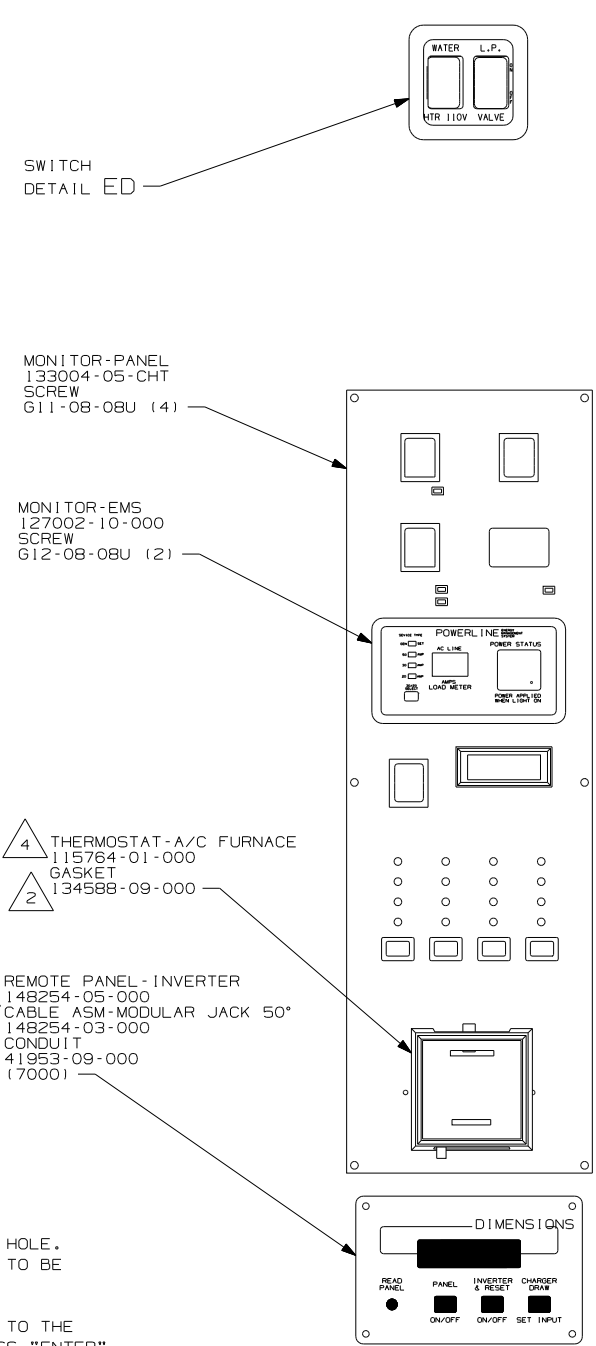
FOR ELECTRICAL CALLOUTS SEE DWG NO. 121339-01-000

265 CODES/STANDARDS-CSA/CMVSS

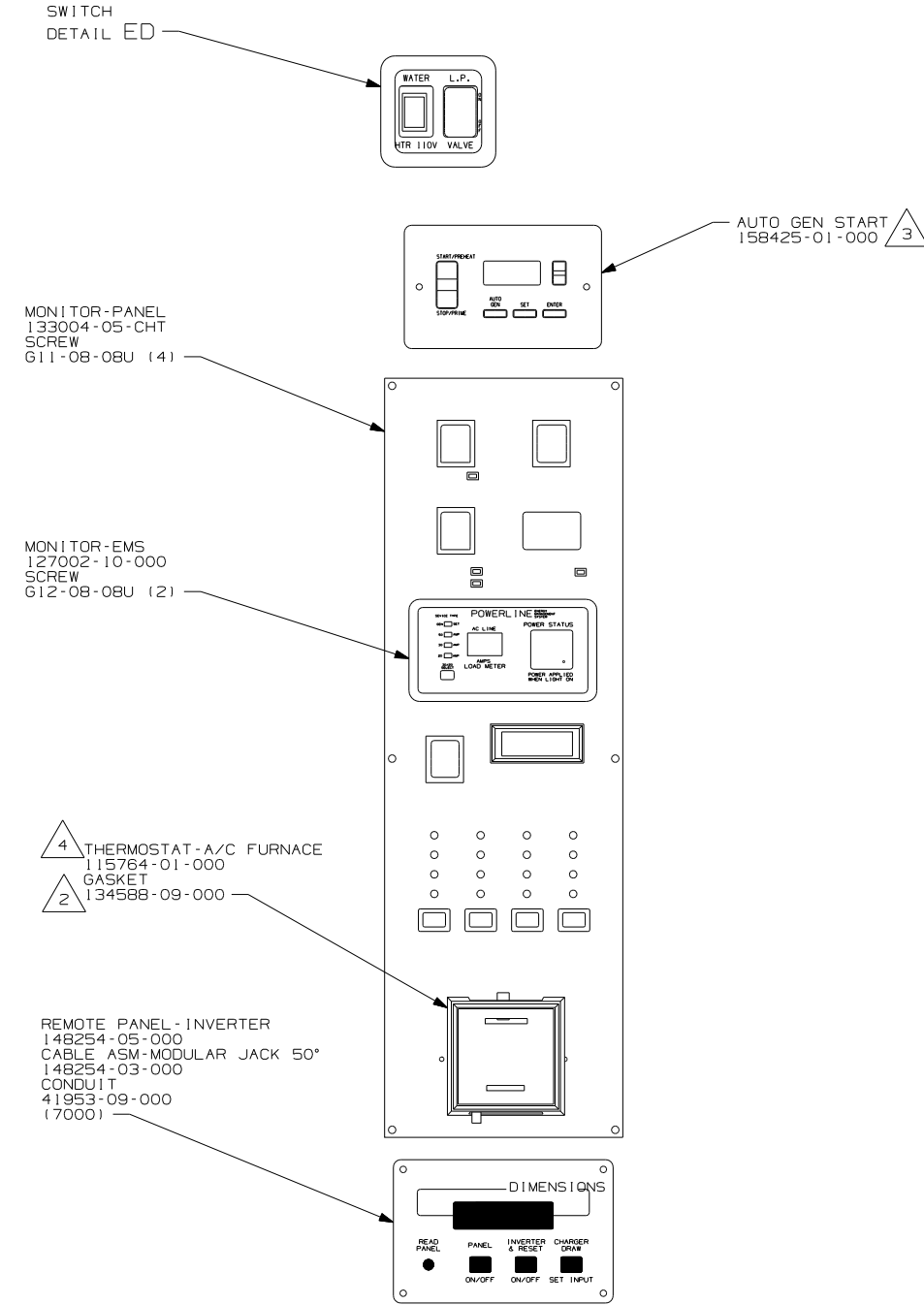
1B1 CODES/STANDARDS USA

1B1 265

FIRST USED	07 S40FD	
TITLE	DO NOT SCALE DRAWING	
	WIRING INSTL-BODY, 12V	
SHEET 8	PART NO	158386 REV



DETAIL JA (32V)



DETAIL JA (32V)

- 4 THERMOSTAT TO BE CENTERED OVER HOLE. BLACK SCREW P/N GLL-08-08U (2) TO BE PLACED IN BOTH HOLES.
- 3 TO SET THE "GEN TYPE" NAVIGATE TO THE "SETUP GENSET" DISPLAY AND PRESS "ENTER" "GENTYPE" WILL BE DISPLAYED. PRESS "SET" THE DISPLAY WILL FLASH. USE THE "UP/DOWN" KEY TO SELECT THE "GEN TYPE" AND PRESS "ENTER" WHEN THE "OD 7.5/8 TYPE IS DISPLAYED. THE "OD 7.5/8 IS NOW STORED IN PERMANENT MEMORY.
- 2 INSTALL GASKET ON BACK SIDE OF ONE PLACE INSTALLATION OF THERMOSTAT, MAKING SURE TAHT THE GASKET CAVERS AND SEALS TRHE HOLE THAT THE WIRES PASS THROUGH
- 1 CONNECT CIRCUIT WB FROM COACH WIRING TO RED WIRE ON REMOTE PANEL

NOTES:

- (32W) GENERATOR-START,AUTO SYSTEM
- (32V) GENERATOR-START,AUTO SYS W/O
- (265) CODES/STANDARDS-CSA/CMVSS
- (1B1) CODES/STANDARDS USA

FIRST USED	07 S40FD	
TITLE:	DO NOT SCALE DRAWING	
	WIRING INSTL-BODY, 12V	
SHEET 9	PART NO 158386	REV

FOR ELECTRICAL TORQUE SPECIFICATIONS SEE DWG NO. 128783-01-000

(X-X) FOR ELECTRICAL CALLOUTS SEE DWG NO. 121339-01-000