



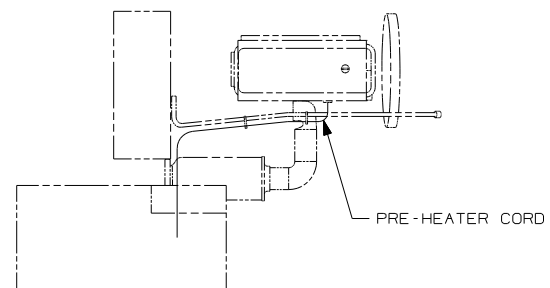
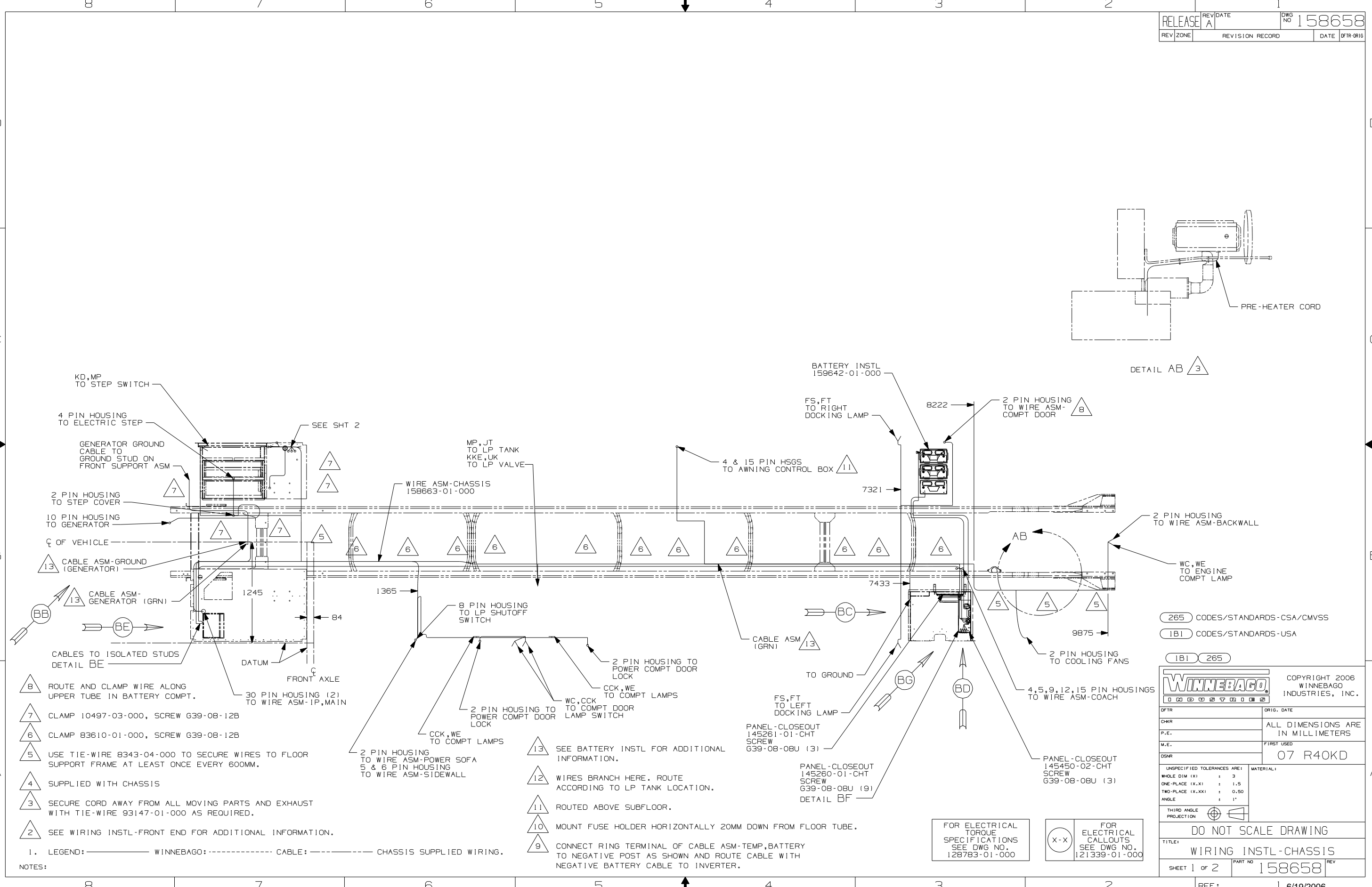
DANGER

Danger of electrical shock, burns or death. Always remove all power sources before attempting any repair, service or diagnostic work. Power can be present from shore power, generator, inverter or battery. All power sources must be disabled and secured before performing any service.



CAUTION

If you lack the skills, tools or equipment to perform diagnostic or repair work leave such work to an authorized Winnebago Industries dealer or other qualified shop.



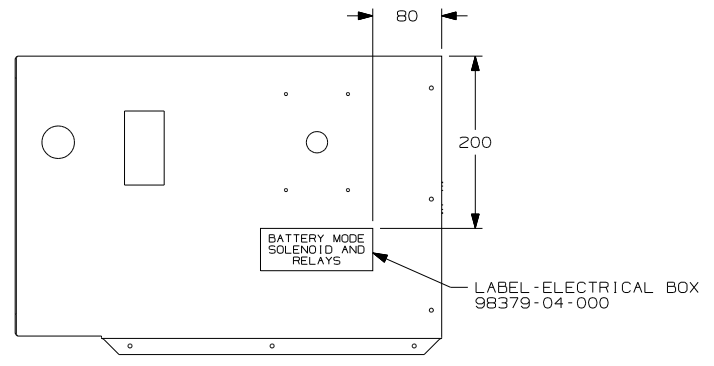
- 8 ROUTE AND CLAMP WIRE ALONG UPPER TUBE IN BATTERY COMPT.
 - 7 CLAMP 10497-03-000, SCREW G39-08-12B
 - 6 CLAMP 83610-01-000, SCREW G39-08-12B
 - 5 USE TIE-WIRE 8343-04-000 TO SECURE WIRES TO FLOOR SUPPORT FRAME AT LEAST ONCE EVERY 600MM.
 - 4 SUPPLIED WITH CHASSIS
 - 3 SECURE CORD AWAY FROM ALL MOVING PARTS AND EXHAUST WITH TIE-WIRE 93147-01-000 AS REQUIRED.
 - 2 SEE WIRING INSTL-FRONT END FOR ADDITIONAL INFORMATION.
1. LEGEND: — WINNEBAGO: - - - - - CABLE: - - - - - CHASSIS SUPPLIED WIRING.
- NOTES:
- 13 SEE BATTERY INSTL FOR ADDITIONAL INFORMATION.
 - 12 WIRES BRANCH HERE. ROUTE ACCORDING TO LP TANK LOCATION.
 - 11 ROUTED ABOVE SUBFLOOR.
 - 10 MOUNT FUSE HOLDER HORIZONTALLY 20MM DOWN FROM FLOOR TUBE.
 - 9 CONNECT RING TERMINAL OF CABLE ASM-TEMP, BATTERY TO NEGATIVE POST AS SHOWN AND ROUTE CABLE WITH NEGATIVE BATTERY CABLE TO INVERTER.

265 CODES/STANDARDS-CSA/CMVSS
 1B1 CODES/STANDARDS-USA
 1B1 265

		COPYRIGHT 2006 WINNEBAGO INDUSTRIES, INC.
DFT	ORIG. DATE	
CHKR	ALL DIMENSIONS ARE IN MILLIMETERS	
P.E.	FIRST USED	07 R40KD
M.E.		
DSNR		
UNSPECIFIED TOLERANCES ARE:	MATERIAL:	
WHOLE DIM (X)	: 3	
ONE-PLACE (X.X)	: 1.5	
TWO-PLACE (X.XX)	: 0.50	
ANGLE	: 1°	
THIRD ANGLE PROJECTION		

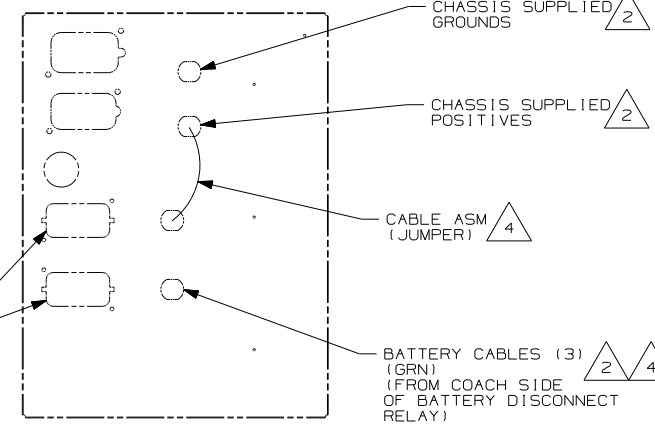
FOR ELECTRICAL TORQUE SPECIFICATIONS SEE DWG NO. 128783-01-000

X-X FOR ELECTRICAL CALLOUTS SEE DWG NO. 121339-01-000



DETAIL BF

LABEL-ELECTRICAL BOX
98379-04-000



DETAIL BE

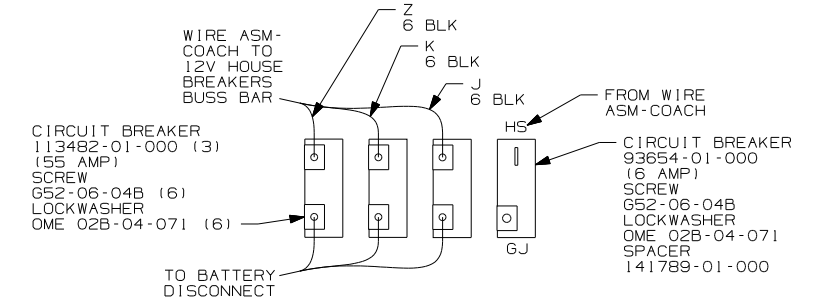
30 PIN HOUSING (2)
TO WIRE ASM-IP, MAIN

CHASSIS SUPPLIED
GROUNDS

CHASSIS SUPPLIED
POSITIVES

CABLE ASM
(JUMPER)

BATTERY CABLES (3)
(GRN)
(FROM COACH SIDE
OF BATTERY DISCONNECT
RELAY)
(GRN)
(TO GENERATOR)

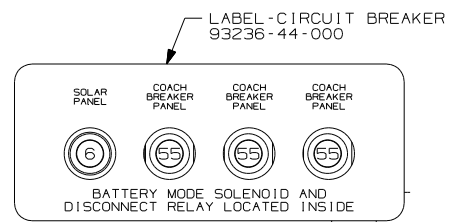


VIEW BD
(BACK VIEW-COMPONENTS)

CIRCUIT BREAKER
113482-01-000 (3)
155 AMP
SCREW
G52-06-04B (6)
LOCKWASHER
OME 02B-04-071 (6)

CIRCUIT BREAKER
93654-01-000
(6 AMP)
SCREW
G52-06-04B
LOCKWASHER
OME 02B-04-071
SPACER
141789-01-000

TO BATTERY
DISCONNECT

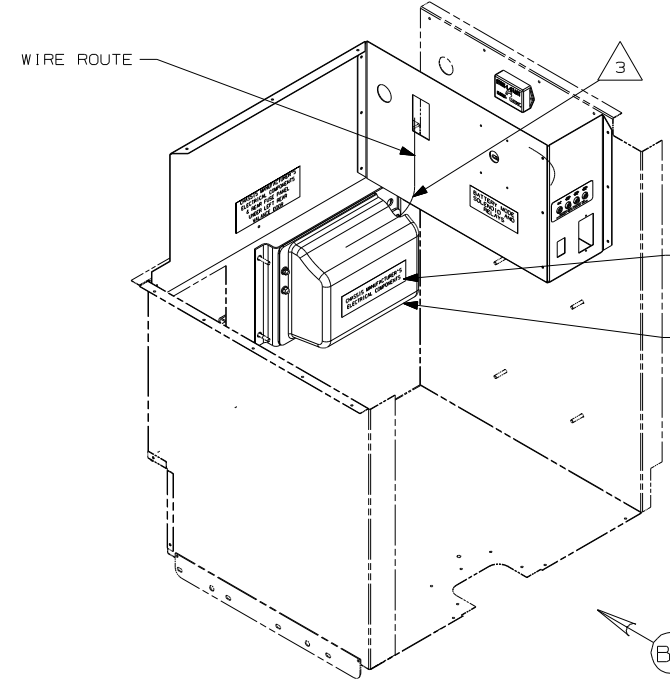


VIEW BD

CHARGER-BATTERY/CHASSIS
156431-01-000
SCREW
G39-08-08B (2)

LABEL-CIRCUIT BREAKER
93236-44-000

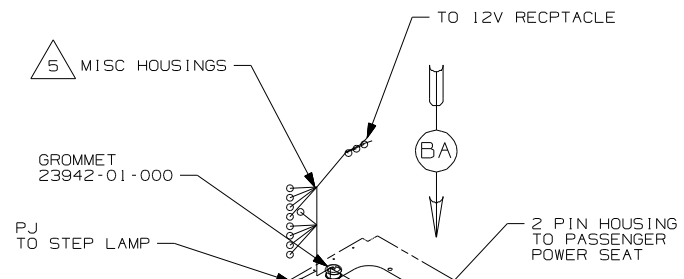
BATTERY MODE SOLENOID AND
DISCONNECT RELAY LOCATED INSIDE



VIEW BG

LABEL-ELECTRICAL BOX
98379-07-000

FREIGHTLINER
SUPPLIED PANEL
NUT
D39-04-00B (4)



VIEW BB

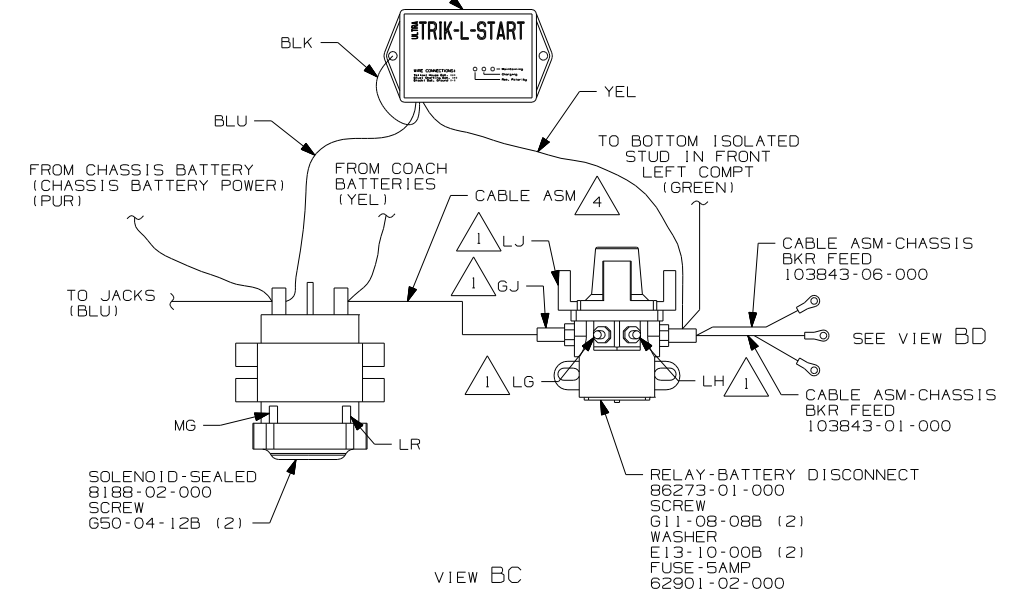
5 MISC HOUSINGS

GROMMET
23942-01-000

PJ
TO STEP LAMP

2 PIN HOUSING
TO PASSENGER
POWER SEAT

TO 12V RECPTACLE



VIEW BC

BLK

BLU

FROM CHASSIS BATTERY
(CHASSIS BATTERY POWER)
(PUR)

FROM COACH
BATTERIES
(YEL)

TO BOTTOM ISOLATED
STUD IN FRONT
LEFT COMPT
(GREEN)

CABLE ASM

1 LJ

1 GJ

1 LG

CABLE ASM-CHASSIS
BKR FEED
103843-06-000

SEE VIEW BD

CABLE ASM-CHASSIS
BKR FEED
103843-01-000

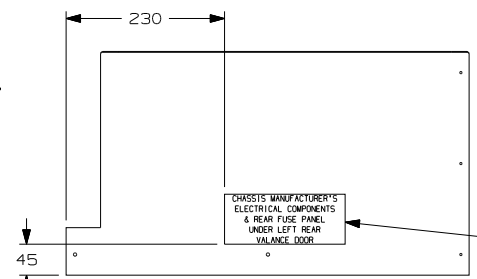
TO JACKS
(BLU)

MG

LR

SOLENOID-SEALED
8188-02-000
SCREW
G50-04-12B (2)

RELAY-BATTERY DISCONNECT
86273-01-000
SCREW
G11-08-08B (2)
WASHER
E13-10-00B (2)
FUSE-5AMP
62901-02-000



VIEW BH

LABEL-ELECTRICAL BOX
98379-08-000

CHASSIS MANUFACTURER'S
ELECTRICAL COMPONENTS
& REAR FUSE PANEL
UNDER LEFT REAR
VALANCE DOOR

- NOTES:
- 5 SEE WIRE ASM-CHASSIS FOR ADDITIONAL INFORMATION.
 - 4 SEE BATTERY INSTL FOR ADDITIONAL INFORMATION.
 - 3 BOX TO BE ORIENTED SO CHASSIS WIRING ROUTES OUT THE TOP RIGHT CORNER.
 - 2 SEE WIRING INSTL-FRONT END FOR ADDITIONAL INFORMATION.
 - 1 CIRCUITS BRANCH FROM WIRE ASM-CHASSIS.

FOR ELECTRICAL
TORQUE
SPECIFICATIONS
SEE DWG NO.
128783-01-000

FOR ELECTRICAL
CALLOUTS
SEE DWG NO.
121339-01-000

265 CODES/STANDARDS-CSA/CMVSS
1B1 CODES/STANDARDS USA

1B1 265

FIRST USED	07 R40KD
TITLE	DO NOT SCALE DRAWING
TITLE	WIRING INSTL-CHASSIS
SHEET 2	PART NO 158658 REV