



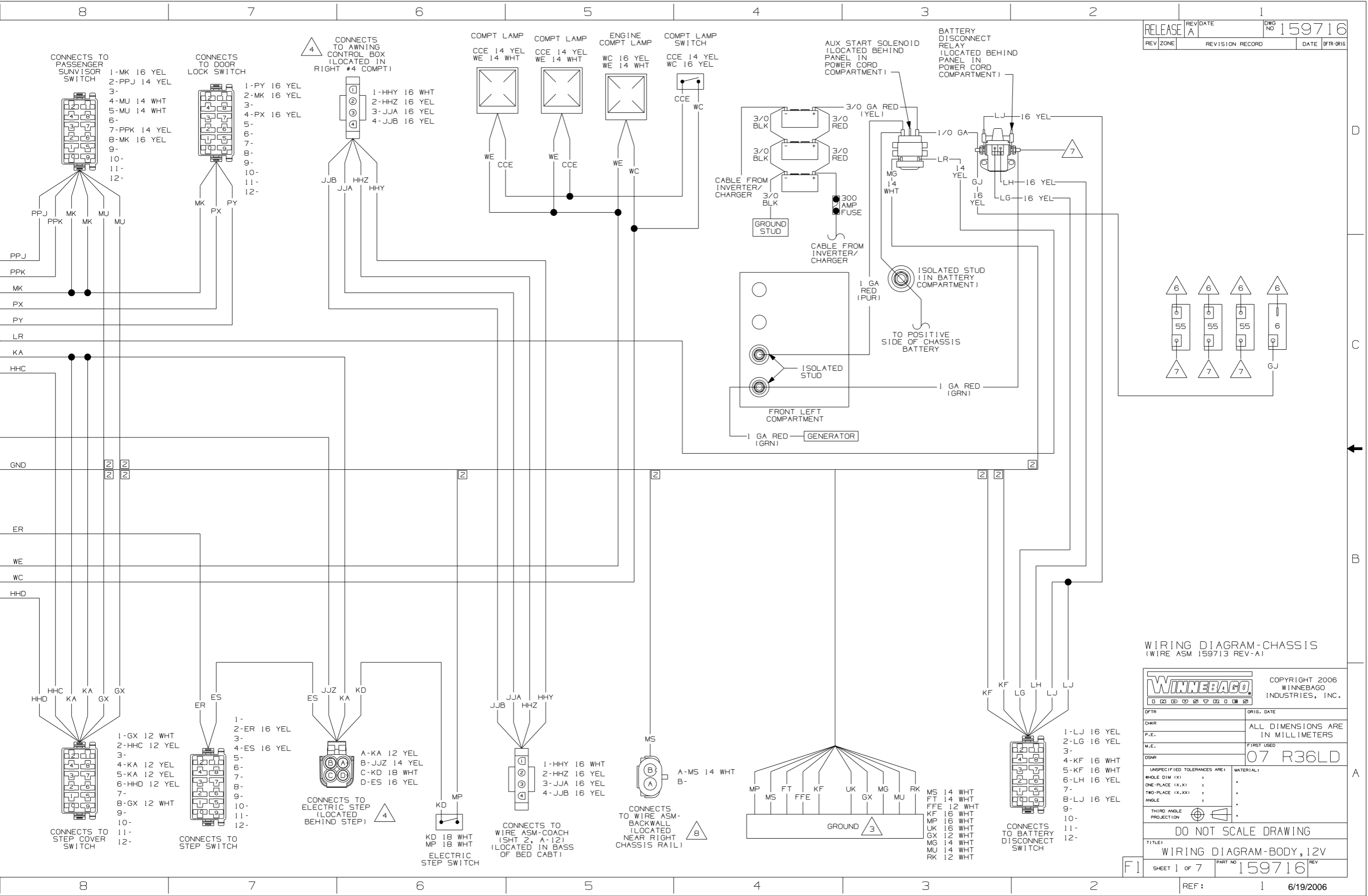
**DANGER**

**Danger of electrical shock, burns or death.** Always remove all power sources before attempting any repair, service or diagnostic work. Power can be present from shore power, generator, inverter or battery. All power sources must be disabled and secured before performing any service.



**CAUTION**

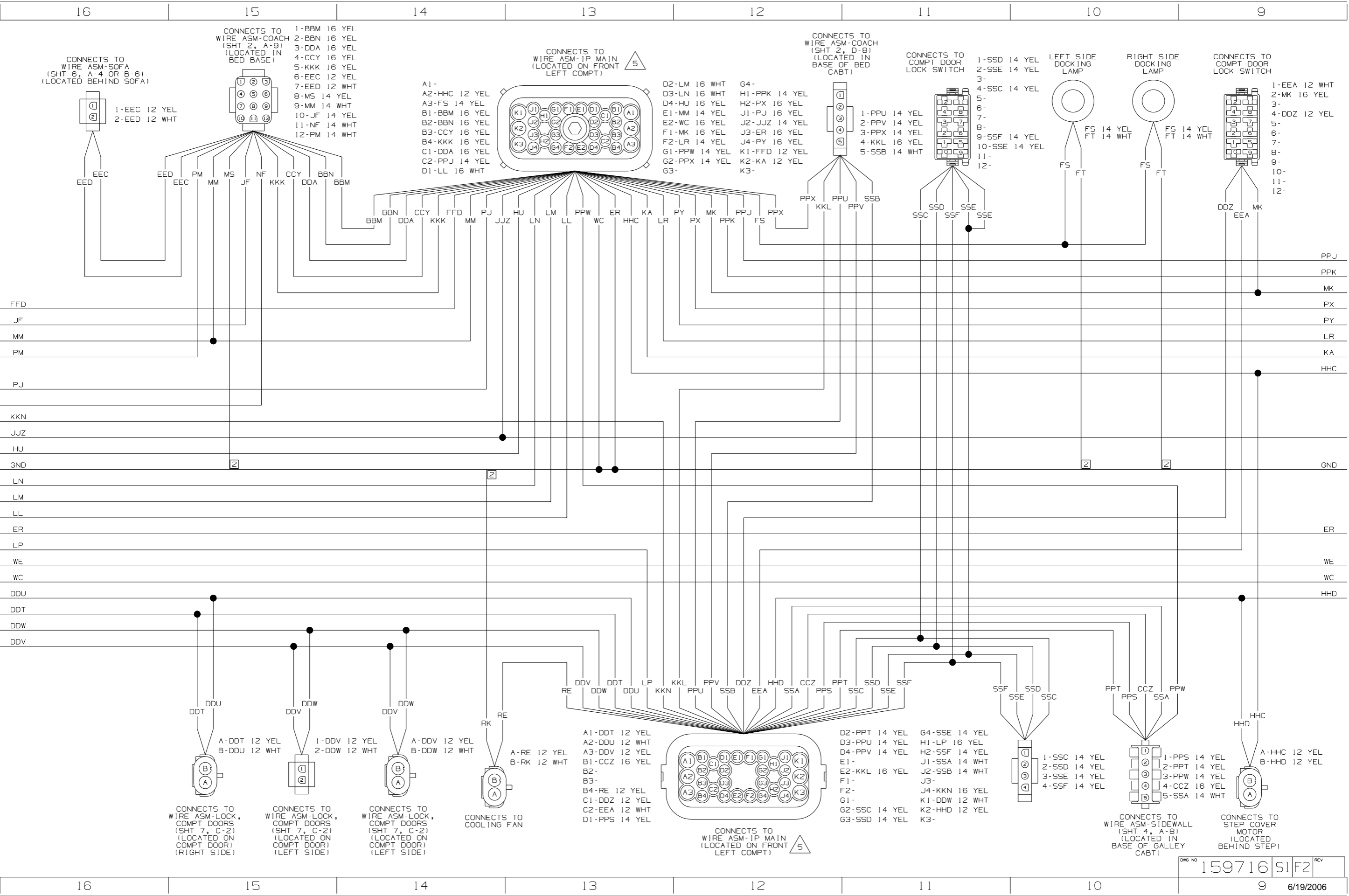
If you lack the skills, tools or equipment to perform diagnostic or repair work leave such work to an authorized Winnebago Industries dealer or other qualified shop.

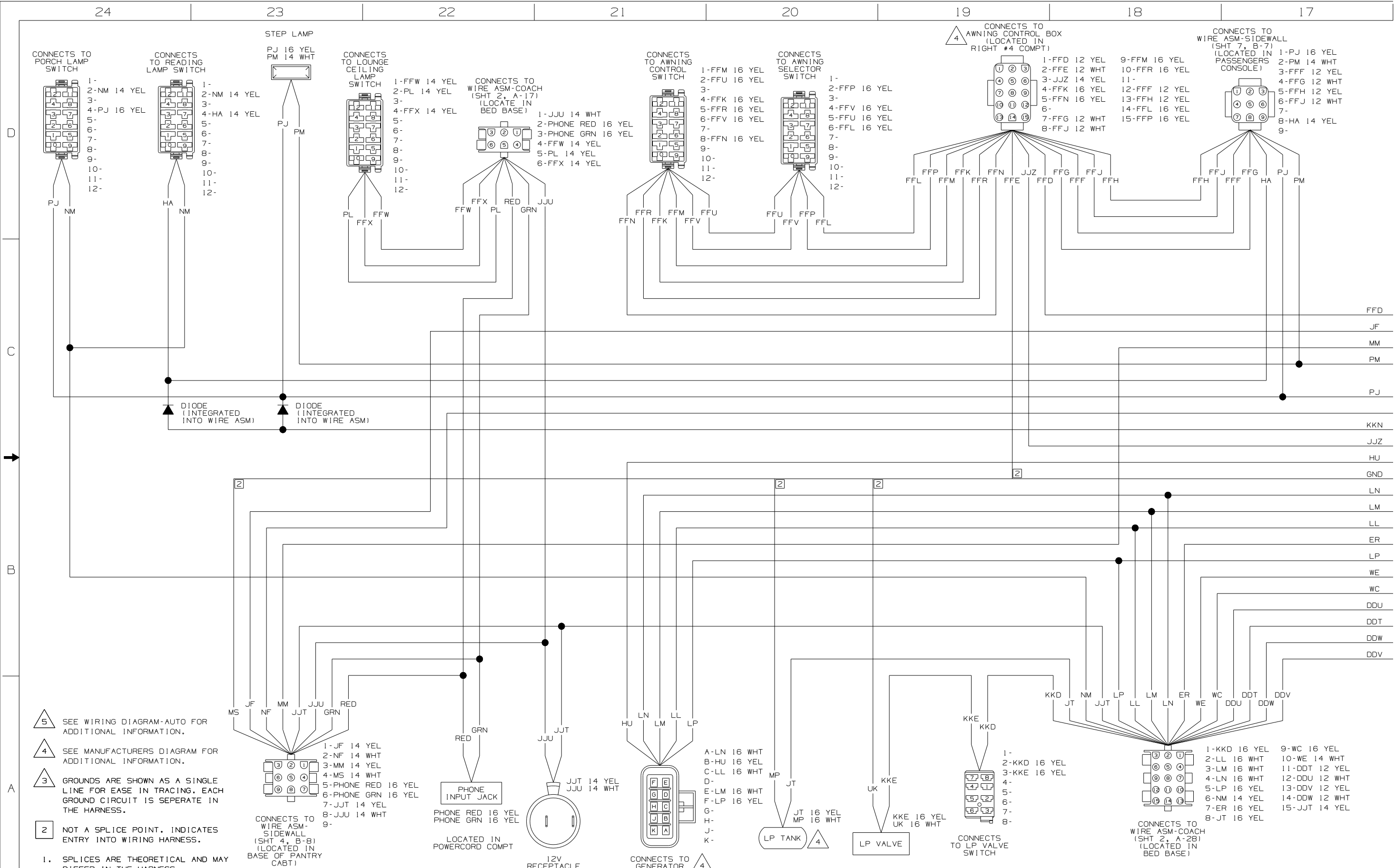


WIRING DIAGRAM-CHASSIS  
 (WIRE ASM 159713 REV-A)

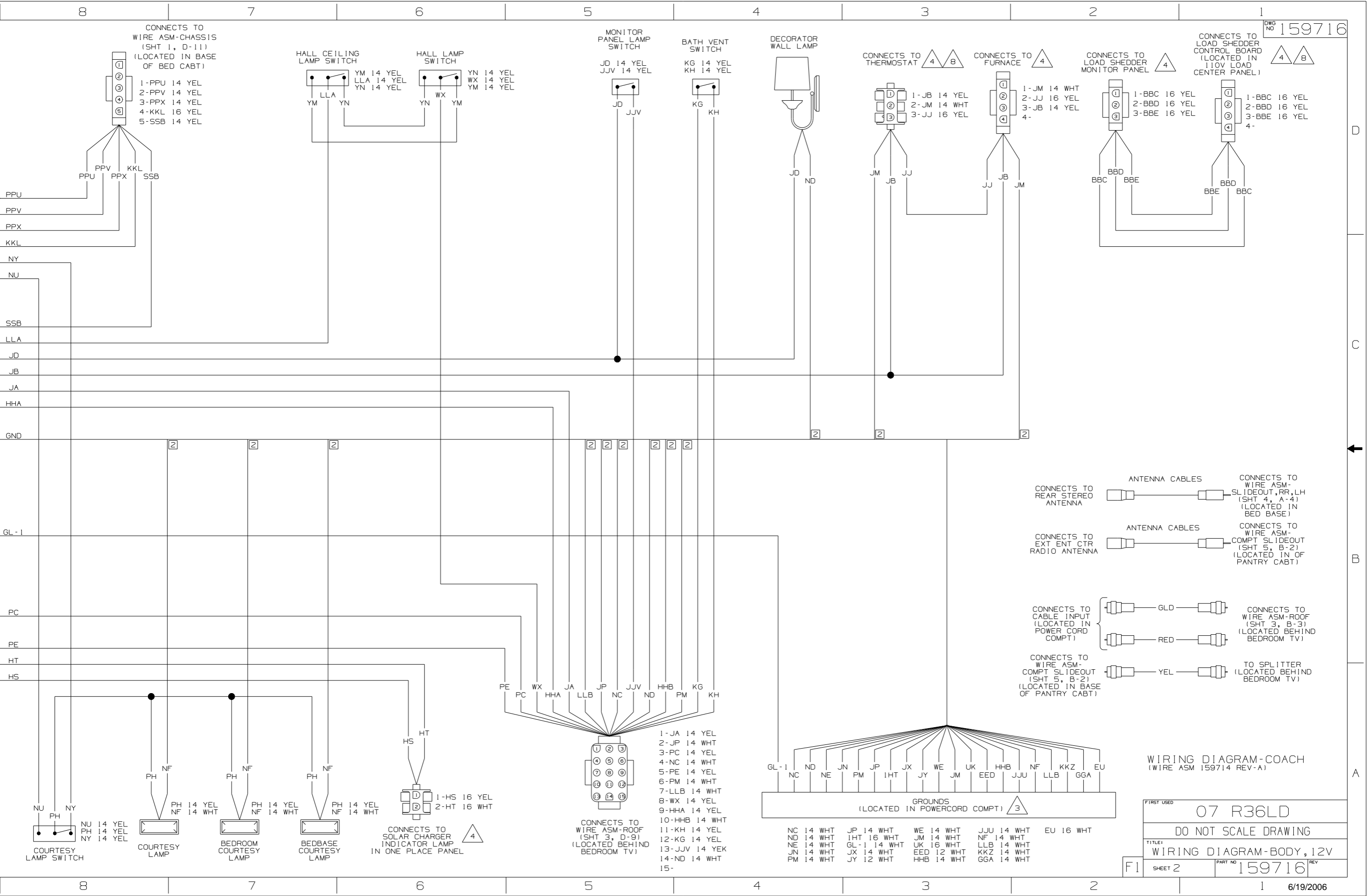
**WINNEBAGO** COPYRIGHT 2006 WINNEBAGO INDUSTRIES, INC.

DFTR	ORIG. DATE
CHR	ALL DIMENSIONS ARE IN MILLIMETERS
P.E.	
M.E.	FIRST USED
DSNR	07 R36LD
UNSPECIFIED TOLERANCES ARE:	MATERIAL:
WHOLE DIM (XX)	
ONE-PLACE (X.X)	
TWO-PLACE (X.XX)	
ANGLE	
THIRD ANGLE PROJECTION	
<b>DO NOT SCALE DRAWING</b>	
TITLE: WIRING DIAGRAM-BODY, 12V	
SHEET 1 of 7	PART NO 159716 REV





- 5 SEE WIRING DIAGRAM-AUTO FOR ADDITIONAL INFORMATION.
- 4 SEE MANUFACTURERS DIAGRAM FOR ADDITIONAL INFORMATION.
- 3 GROUNDS ARE SHOWN AS A SINGLE LINE FOR EASE IN TRACING. EACH GROUND CIRCUIT IS SEPERATE IN THE HARNESS.
- 2 NOT A SPLICE POINT. INDICATES ENTRY INTO WIRING HARNESS.
1. SPLICES ARE THEORETICAL AND MAY DIFFER IN THE HARNESS.



CONNECTS TO WIRE ASM-CHASSIS (SHT 1, D-11) (LOCATED IN BASE OF BED CABT)

- 1-PPU 14 YEL
- 2-PPV 14 YEL
- 3-PPX 14 YEL
- 4-KKL 16 YEL
- 5-SSB 14 YEL

HALL CEILING LAMP SWITCH

- YM 14 YEL
- LLA 14 YEL
- YN 14 YEL

HALL LAMP SWITCH

- YN 14 YEL
- WX 14 YEL
- YM 14 YEL

MONITOR PANEL LAMP SWITCH

- JD 14 YEL
- JJV 14 YEL

BATH VENT SWITCH

- KG 14 YEL
- KH 14 YEL

DECORATOR WALL LAMP

- JD
- ND

CONNECTS TO THERMOSTAT

- 1-JB 14 YEL
- 2-JM 14 WHT
- 3-JJ 16 YEL

CONNECTS TO FURNACE

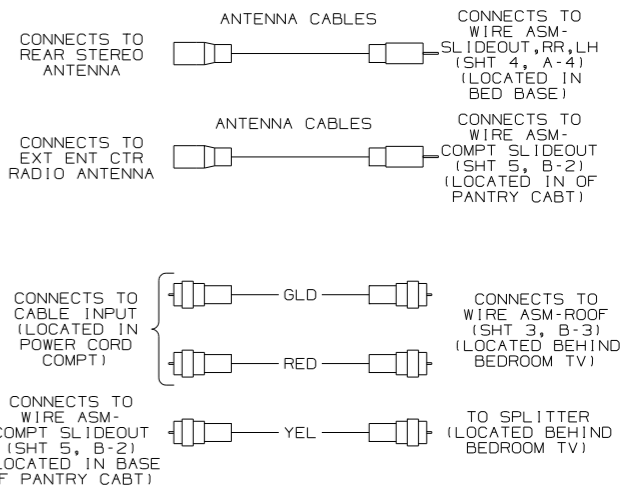
- 1-JM 14 WHT
- 2-JJ 16 YEL
- 3-JB 14 YEL
- 4-

CONNECTS TO LOAD SHEDDER MONITOR PANEL

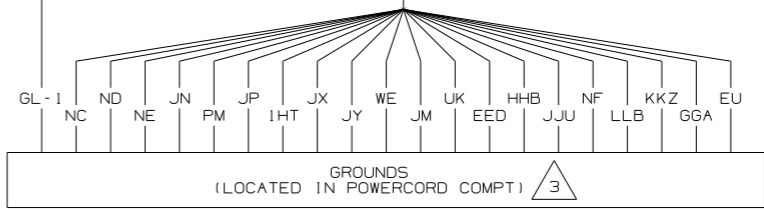
- 1-BBC 16 YEL
- 2-BBD 16 YEL
- 3-BBE 16 YEL
- 4-

CONNECTS TO LOAD SHEDDER CONTROL BOARD (LOCATED IN 110V LOAD CENTER PANEL)

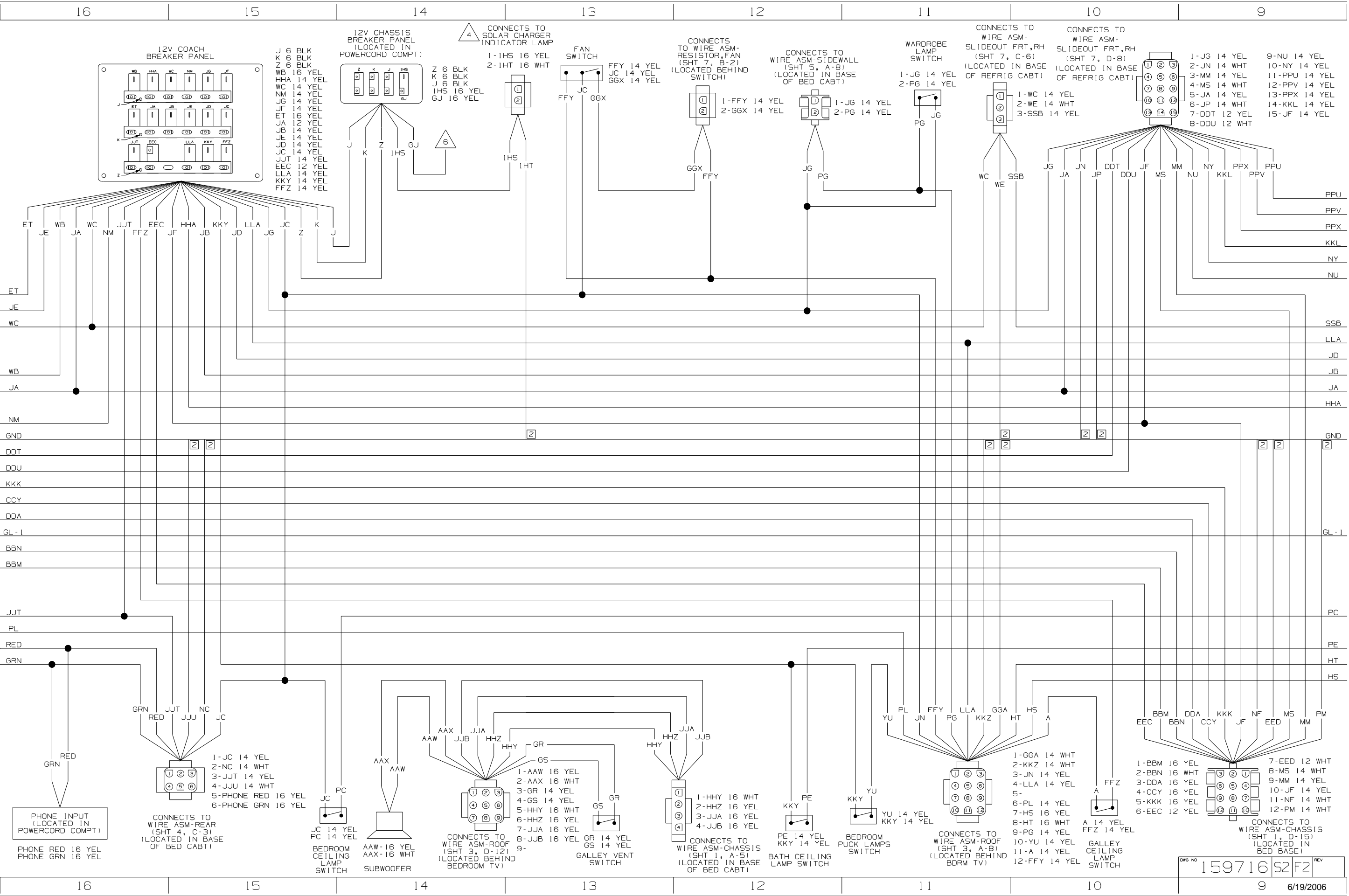
- 1-BBC 16 YEL
- 2-BBD 16 YEL
- 3-BBE 16 YEL
- 4-

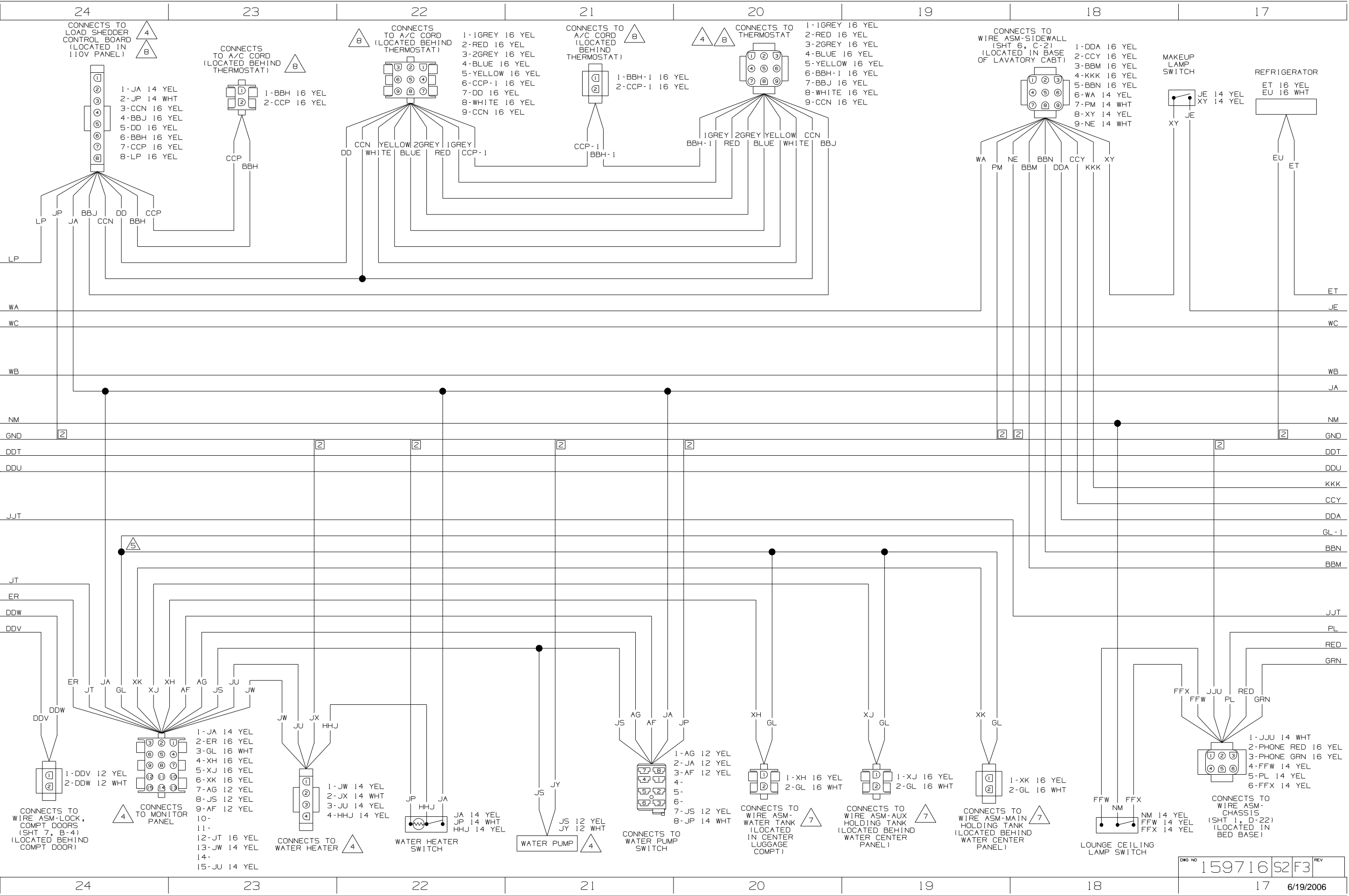


WIRING DIAGRAM-COACH (WIRE ASM 159714 REV-A)

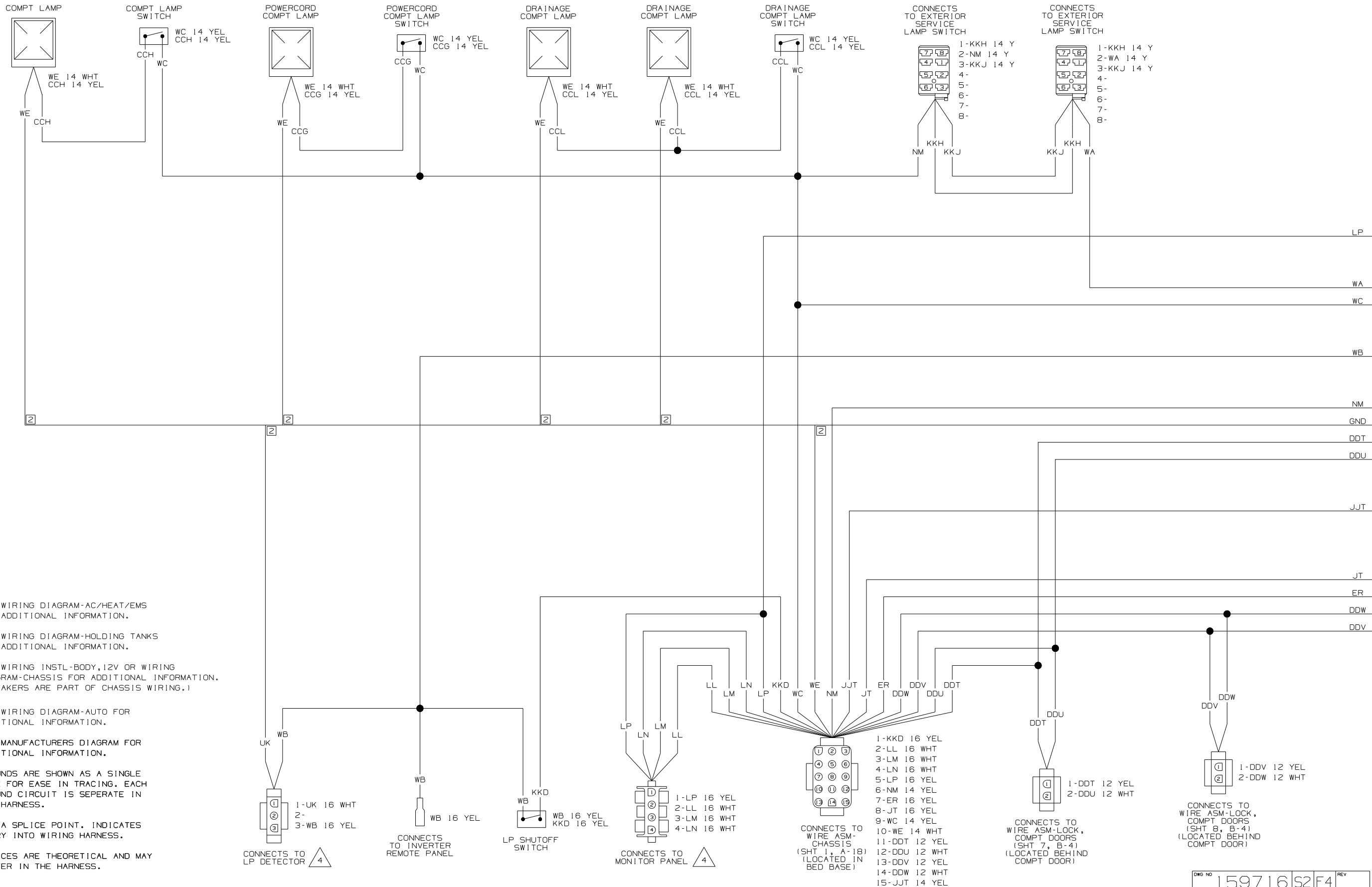


FIRST USED	07 R36LD	
DO NOT SCALE DRAWING		
TITLE	WIRING DIAGRAM-BODY, 12V	
SHEET 2	PART NO	159716



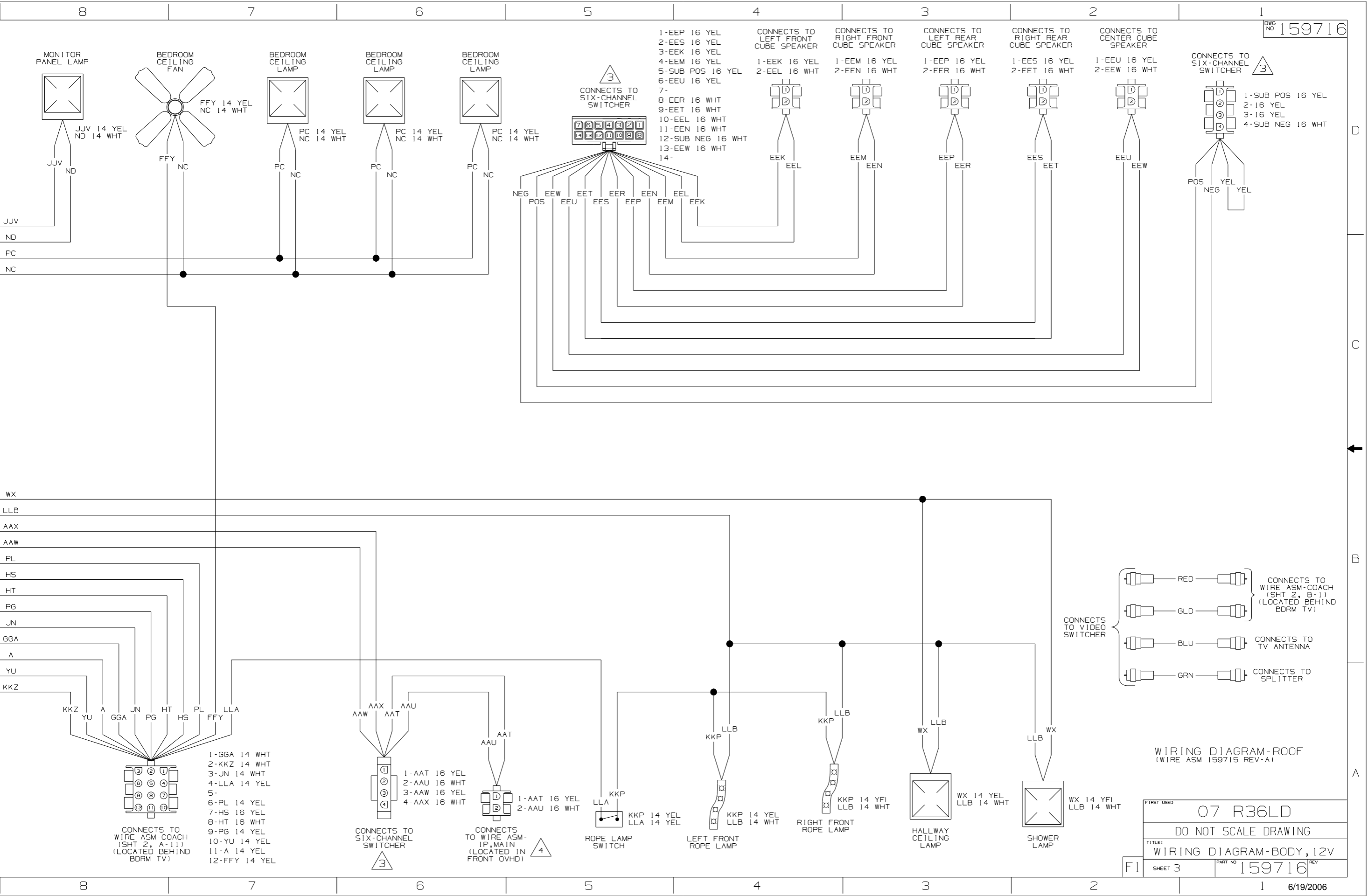


D  
C  
B  
A



- 8 SEE WIRING DIAGRAM-AC/HEAT/EMS FOR ADDITIONAL INFORMATION.
  - 7 SEE WIRING DIAGRAM-HOLDING TANKS FOR ADDITIONAL INFORMATION.
  - 6 SEE WIRING INSTL-BODY, 12V OR WIRING DIAGRAM-CHASSIS FOR ADDITIONAL INFORMATION. (BREAKERS ARE PART OF CHASSIS WIRING.)
  - 5 SEE WIRING DIAGRAM-AUTO FOR ADDITIONAL INFORMATION.
  - 4 SEE MANUFACTURERS DIAGRAM FOR ADDITIONAL INFORMATION.
  - 3 GROUNDS ARE SHOWN AS A SINGLE LINE FOR EASE IN TRACING. EACH GROUND CIRCUIT IS SEPERATE IN THE HARNESS.
  - 2 NOT A SPLICE POINT. INDICATES ENTRY INTO WIRING HARNESS.
1. SPLICES ARE THEORETICAL AND MAY DIFFER IN THE HARNESS.



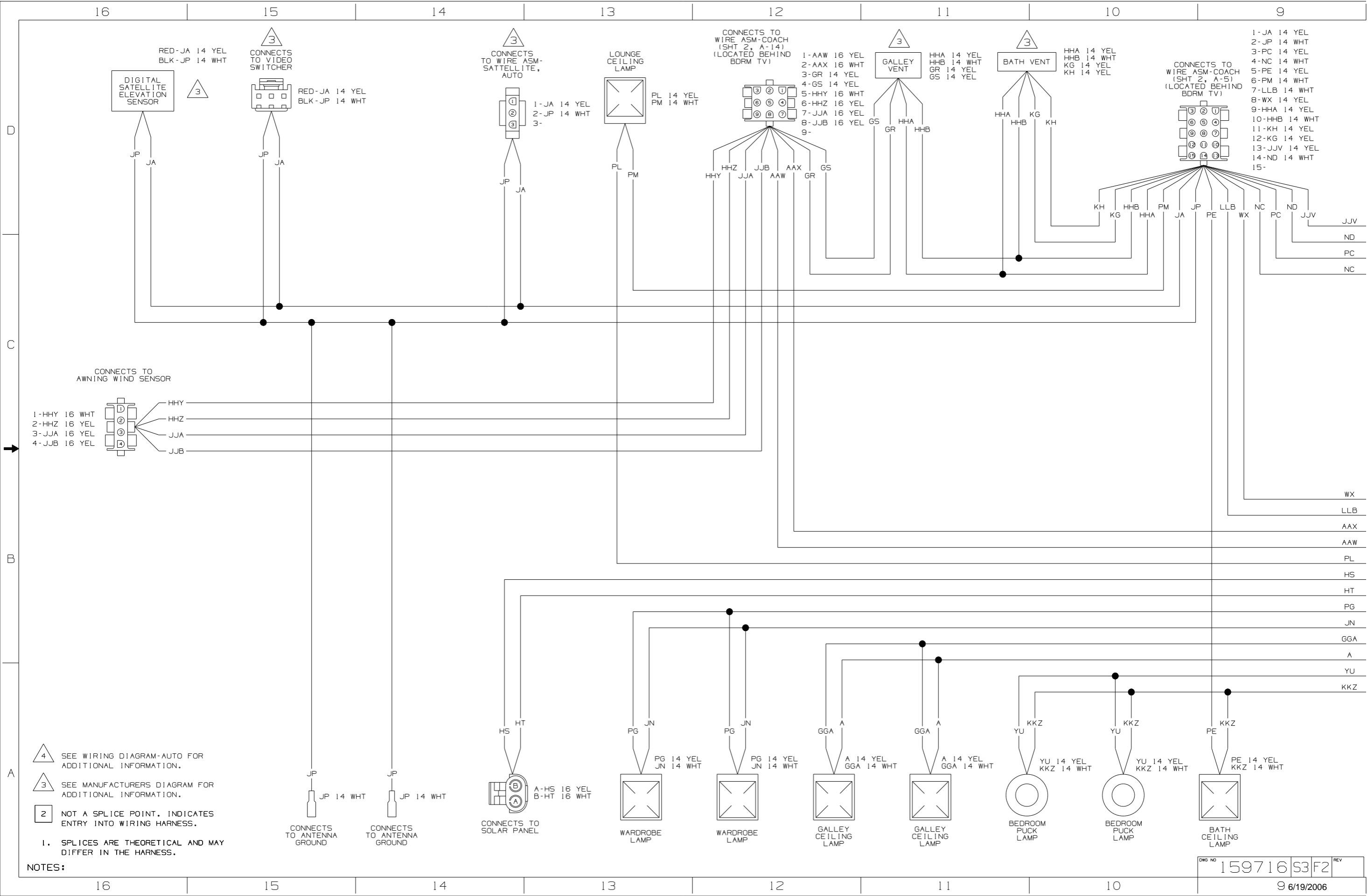


- 1-EEP 16 YEL
  - 2-EES 16 YEL
  - 3-EEK 16 YEL
  - 4-EEM 16 YEL
  - 5-SUB POS 16 YEL
  - 6-EEU 16 YEL
  - 7-
  - 8-EER 16 WHT
  - 9-EET 16 WHT
  - 10-EEL 16 WHT
  - 11-EEN 16 WHT
  - 12-SUB NEG 16 WHT
  - 13-EEW 16 WHT
  - 14-
- CONNECTS TO LEFT FRONT CUBE SPEAKER
- CONNECTS TO RIGHT FRONT CUBE SPEAKER
- CONNECTS TO LEFT REAR CUBE SPEAKER
- CONNECTS TO RIGHT REAR CUBE SPEAKER
- CONNECTS TO CENTER CUBE SPEAKER
- CONNECTS TO SIX-CHANNEL SWITCHER
- 1-EEK 16 YEL
  - 2-EEL 16 WHT
- CONNECTS TO SIX-CHANNEL SWITCHER
- 1-EEM 16 YEL
  - 2-EEN 16 WHT
- CONNECTS TO SIX-CHANNEL SWITCHER
- 1-EEP 16 YEL
  - 2-EER 16 WHT
- CONNECTS TO SIX-CHANNEL SWITCHER
- 1-EES 16 YEL
  - 2-EET 16 WHT
- CONNECTS TO SIX-CHANNEL SWITCHER
- 1-EEU 16 YEL
  - 2-EEW 16 WHT
- CONNECTS TO SIX-CHANNEL SWITCHER
- 1-SUB POS 16 YEL
  - 2-16 YEL
  - 3-16 YEL
  - 4-SUB NEG 16 WHT

- CONNECTS TO WIRE ASM-COACH (SHT 2, B-1) (LOCATED BEHIND BDRM TV)
- CONNECTS TO TV ANTENNA
- CONNECTS TO SPLITTER

WIRING DIAGRAM-ROOF (WIRE ASM 159715 REV-A)

FIRST USED	07 R36LD
TITLE	DO NOT SCALE DRAWING
	WIRING DIAGRAM-BODY, 12V
SHEET 3	PART NO 159716 REV



RED-JA 14 YEL  
BLK-JP 14 WHT

CONNECTS TO VIDEO SWITCHER  
RED-JA 14 YEL  
BLK-JP 14 WHT

CONNECTS TO WIRE ASM-SATTELLITE, AUTO  
1-JA 14 YEL  
2-JP 14 WHT  
3-

LOUNGE CEILING LAMP  
PL 14 YEL  
PM 14 WHT

CONNECTS TO WIRE ASM-COACH (SHT 2, A-14) (LOCATED BEHIND BDRM TV)

- 1-AAW 16 YEL
- 2-AAX 16 WHT
- 3-GR 14 YEL
- 4-GS 14 YEL
- 5-HHY 16 WHT
- 6-HHZ 16 YEL
- 7-JJA 16 YEL
- 8-JJB 16 YEL
- 9-

GALLEY VENT  
HHA 14 YEL  
HNB 14 WHT  
GR 14 YEL  
GS 14 YEL

BATH VENT  
HHA 14 YEL  
HNB 14 WHT  
KG 14 YEL  
KH 14 YEL

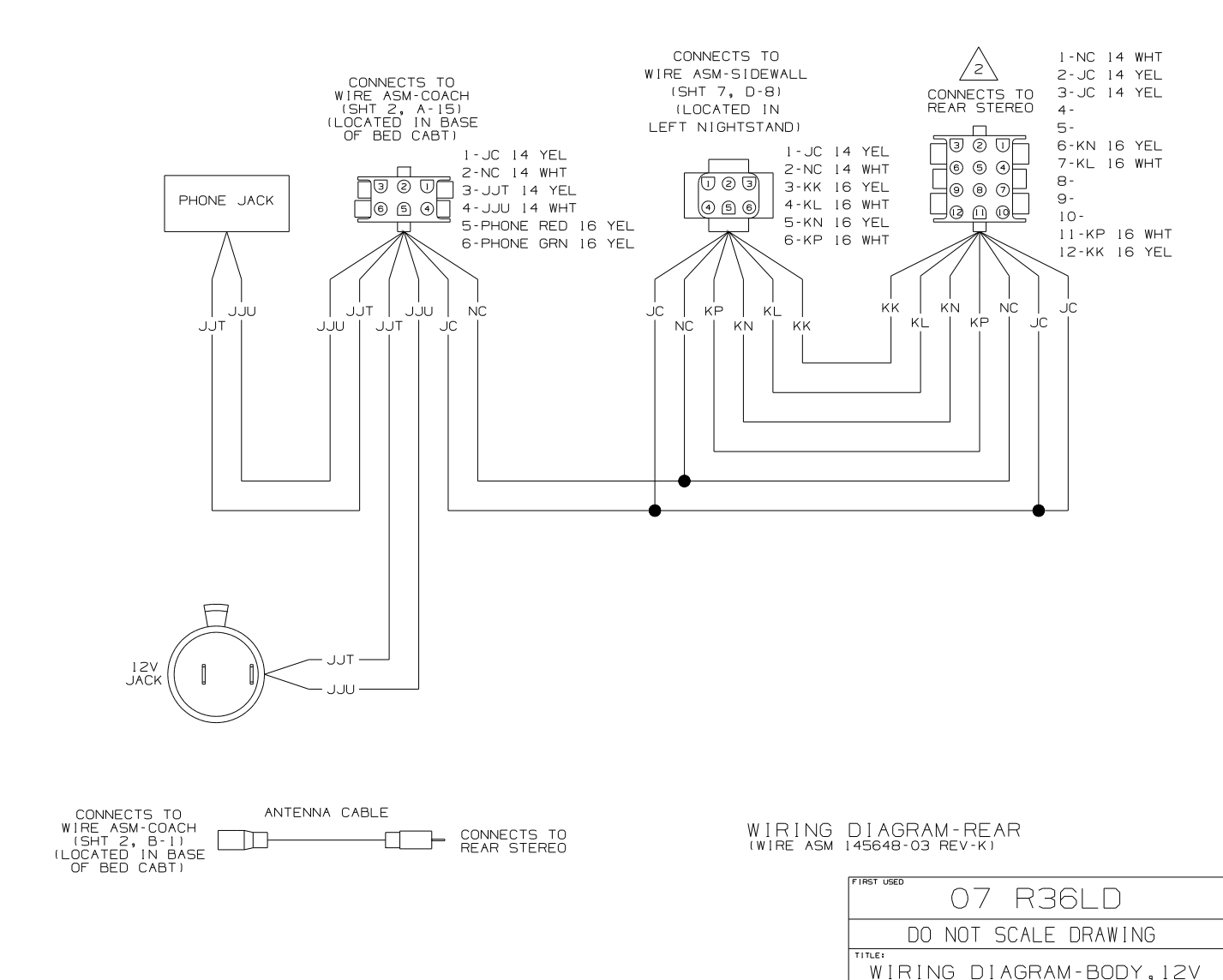
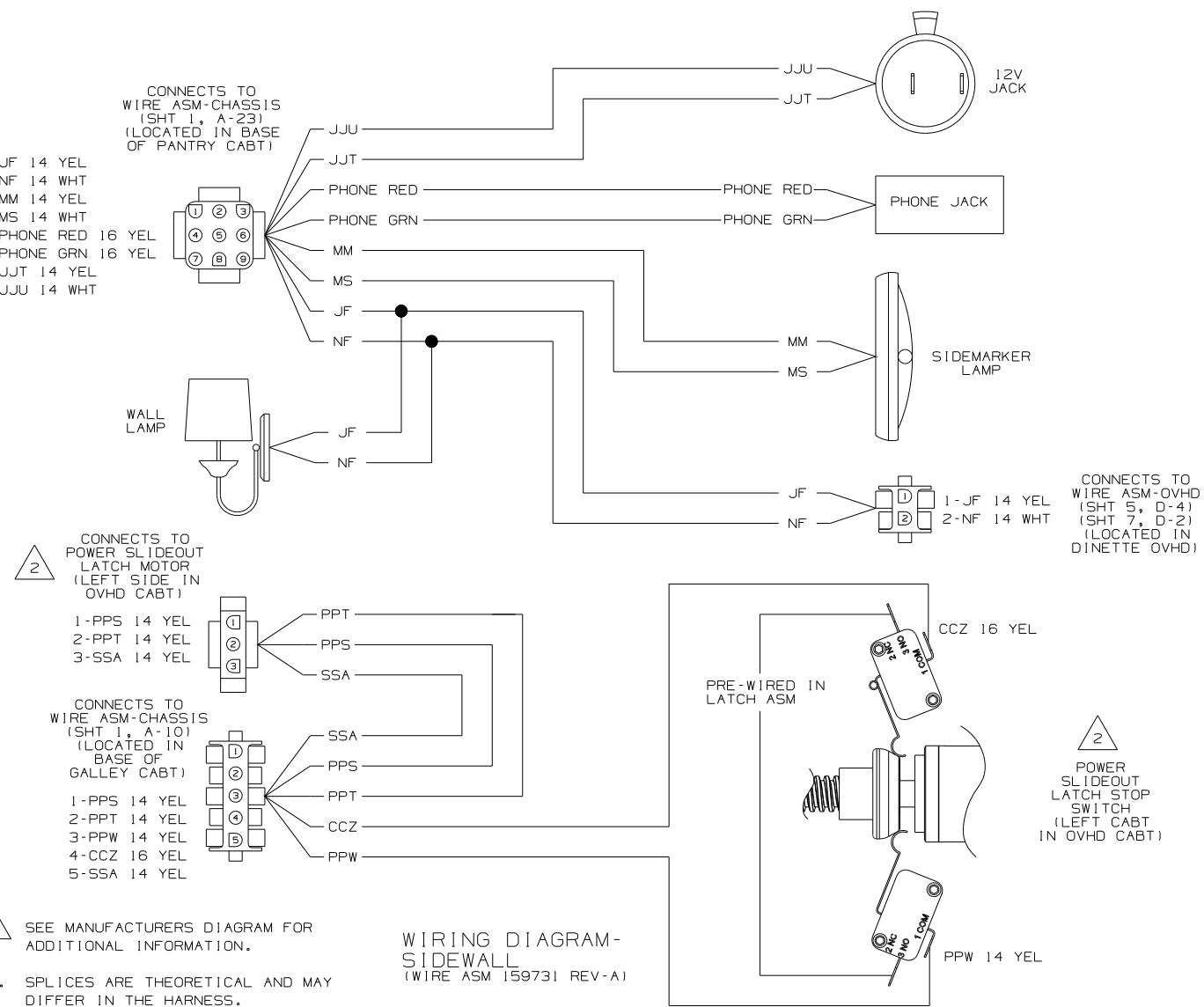
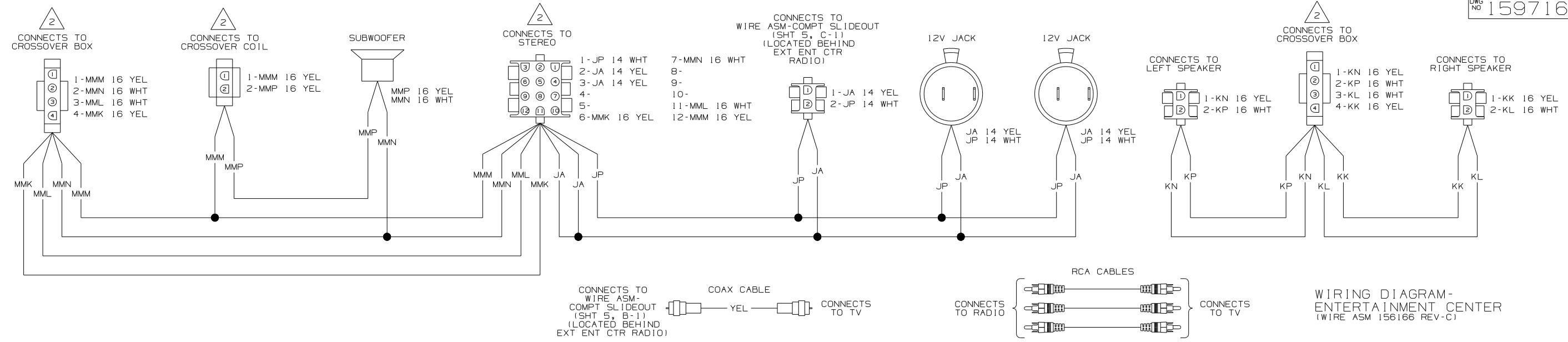
CONNECTS TO WIRE ASM-COACH (SHT 2, A-5) (LOCATED BEHIND BDRM TV)

- 1-JA 14 YEL
- 2-JP 14 WHT
- 3-PC 14 YEL
- 4-NC 14 WHT
- 5-PE 14 YEL
- 6-PM 14 WHT
- 7-LLB 14 WHT
- 8-WX 14 YEL
- 9-HHA 14 YEL
- 10-HHB 14 WHT
- 11-KH 14 YEL
- 12-KG 14 YEL
- 13-JJV 14 YEL
- 14-ND 14 WHT
- 15-

CONNECTS TO AWNING WIND SENSOR

- 1-HHY 16 WHT
- 2-HHZ 16 YEL
- 3-JJA 16 YEL
- 4-JJB 16 YEL

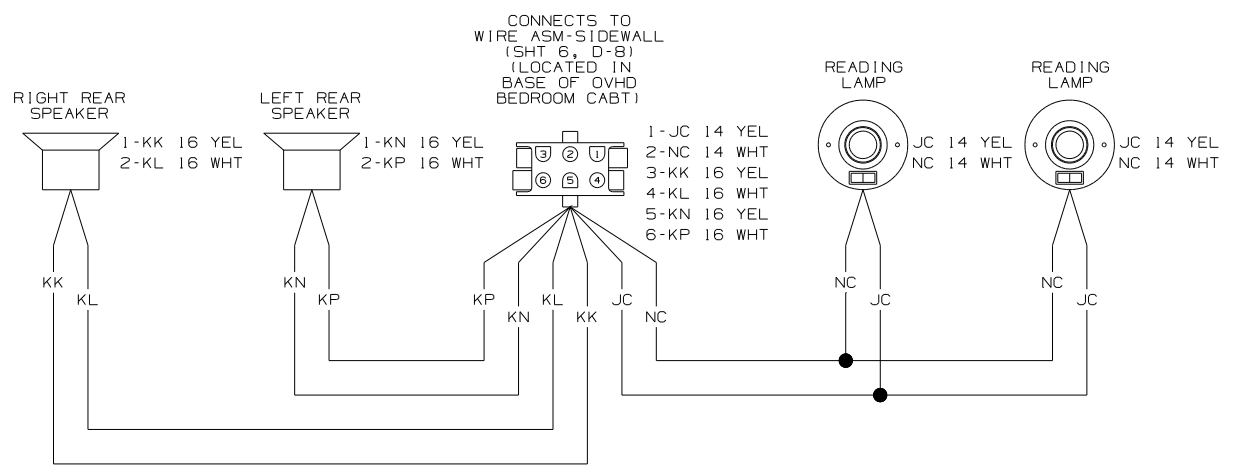
- NOTES:
- 4 SEE WIRING DIAGRAM-AUTO FOR ADDITIONAL INFORMATION.
  - 3 SEE MANUFACTURERS DIAGRAM FOR ADDITIONAL INFORMATION.
  - 2 NOT A SPLICE POINT. INDICATES ENTRY INTO WIRING HARNESS.
  - 1. SPLICES ARE THEORETICAL AND MAY DIFFER IN THE HARNESS.



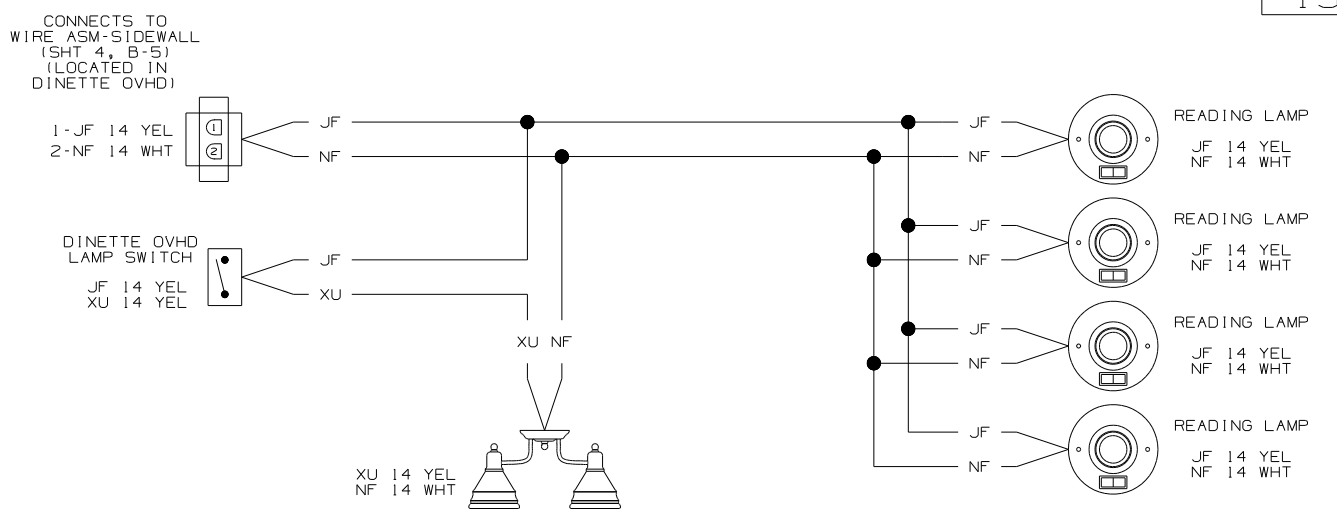
SEE MANUFACTURERS DIAGRAM FOR ADDITIONAL INFORMATION.

1. SPLICES ARE THEORETICAL AND MAY DIFFER IN THE HARNESS.

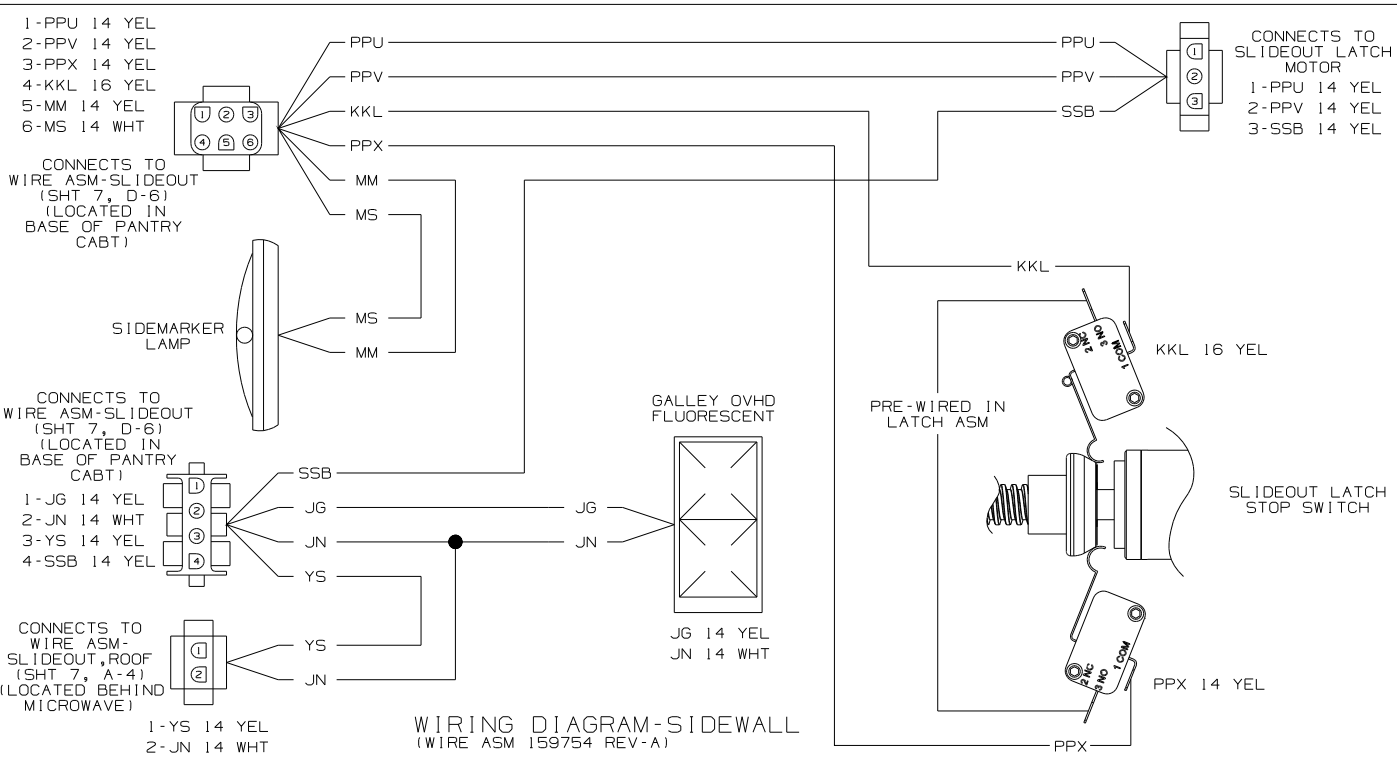
FIRST USED	07 R36LD		
TITLE	DO NOT SCALE DRAWING		
	WIRING DIAGRAM-BODY, 12V		
SHEET 4	PART NO	159716	REV



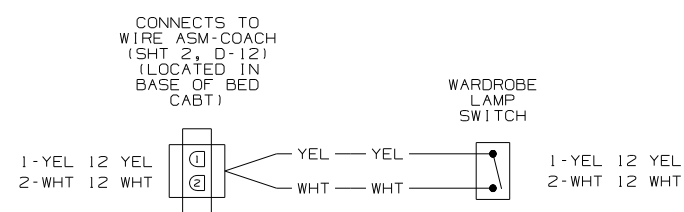
WIRING DIAGRAM-OVHD, REAR  
(WIRE ASM 145650-01 REV-G)



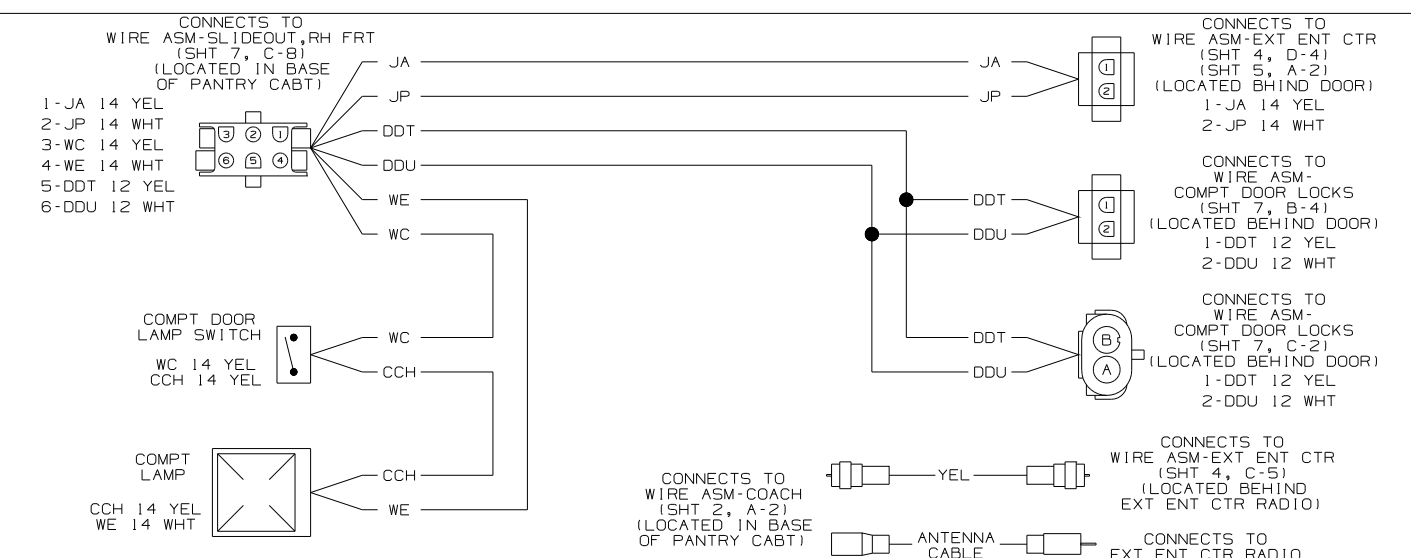
WIRING DIAGRAM-OVHD  
(WIRE ASM 156146 REV-A)



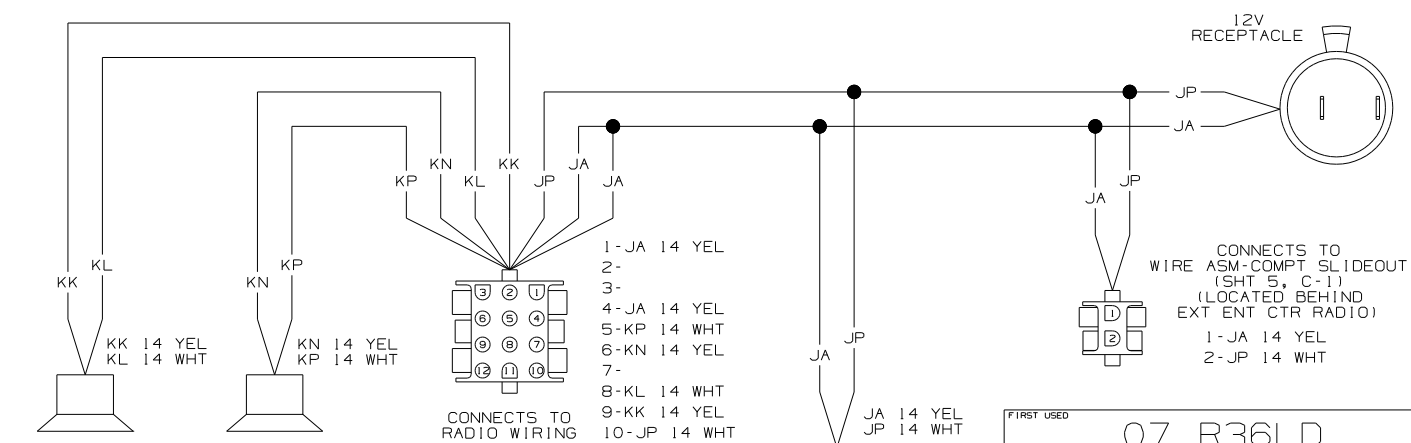
WIRING DIAGRAM-SIDEWALL  
(WIRE ASM 159754 REV-A)



WIRING DIAGRAM-SIDEWALL  
(WIRE ASM 133572-03 REV-F)



WIRING DIAGRAM-COMPT, SLIDEOUT  
(WIRE ASM 155287 REV-B)



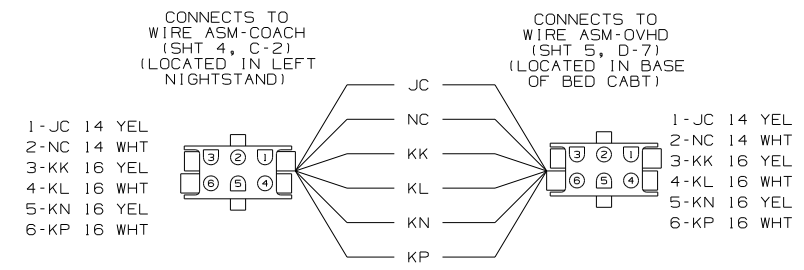
WIRING DIAGRAM-ENTERTAINMENT CTR  
(WIRE ASM 155338 REV-B)

SEE MANUFACTURERS DIAGRAM FOR ADDITIONAL INFORMATION.

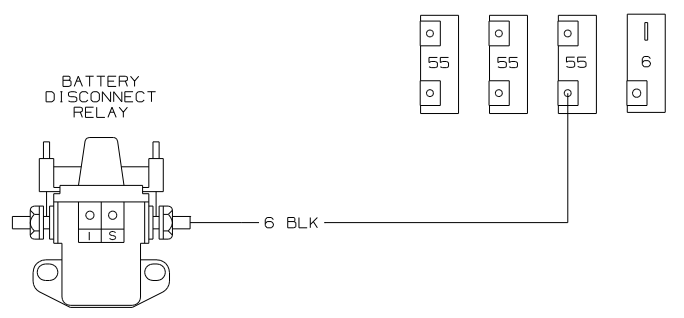
1. SPLICES ARE THEORETICAL AND MAY DIFFER IN THE HARNESS.

NOTES:

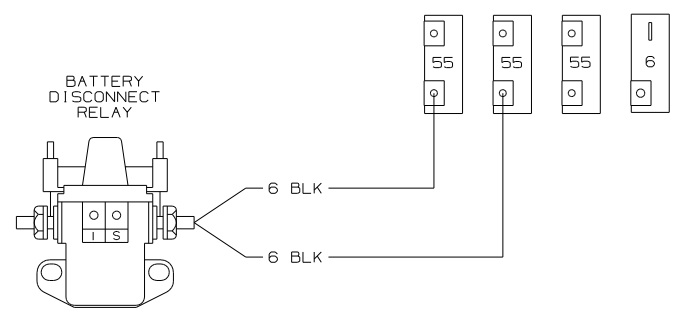
FIRST USED	07 R36LD	
TITLE	DO NOT SCALE DRAWING	
	WIRING DIAGRAM-BODY, 12V	
SHEET 5	PART NO	159716
	REV	



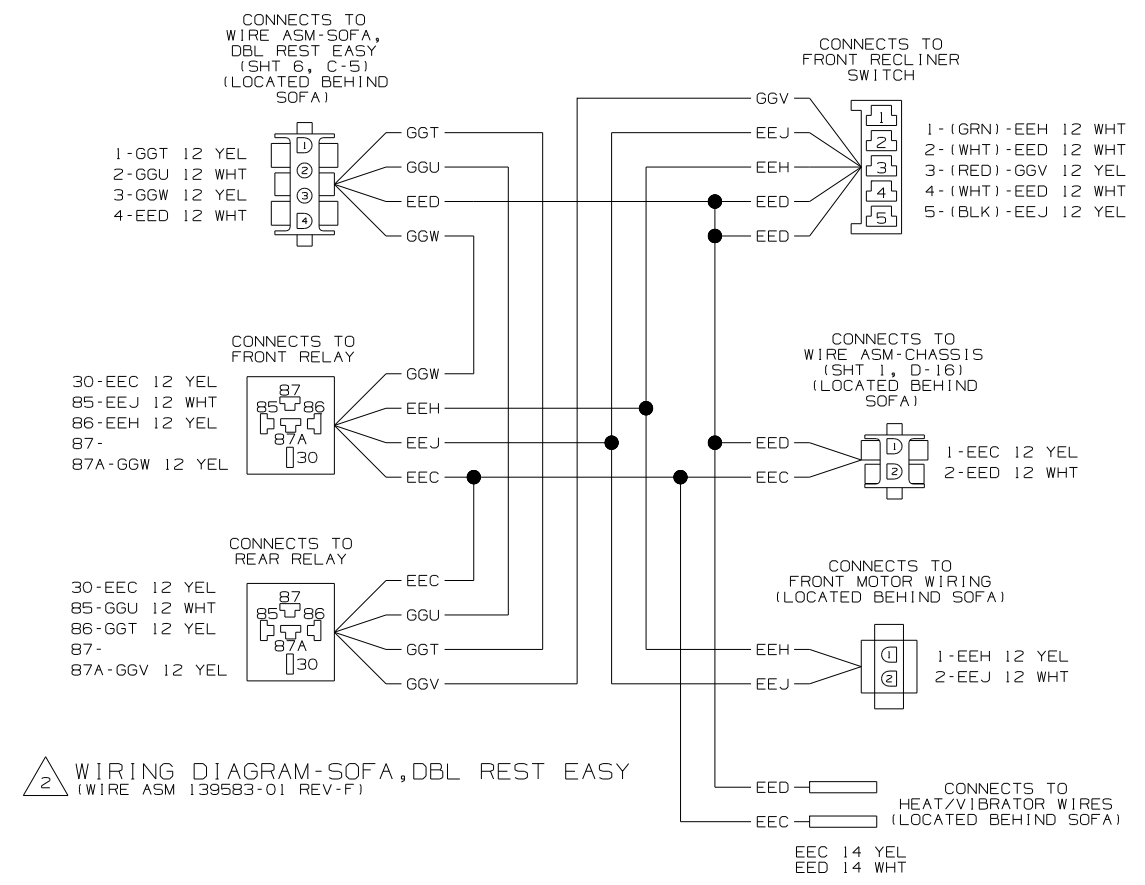
WIRING DIAGRAM-SIDEWALL (CABLE ASM 145562 REV-C)



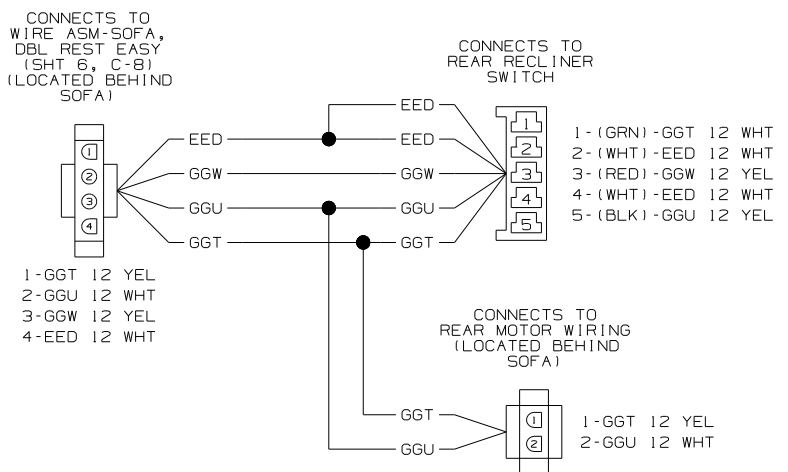
WIRING DIAGRAM-CHASSIS BKR FEED (CABLE ASM 103843-06 REV-L)



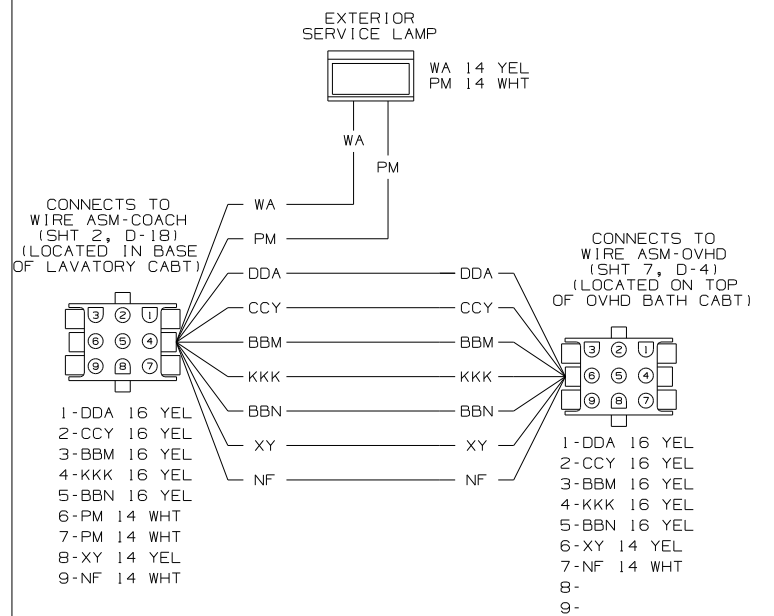
WIRING DIAGRAM-CHASSIS BKR FEED (CABLE ASM 103843-01 REV-L)



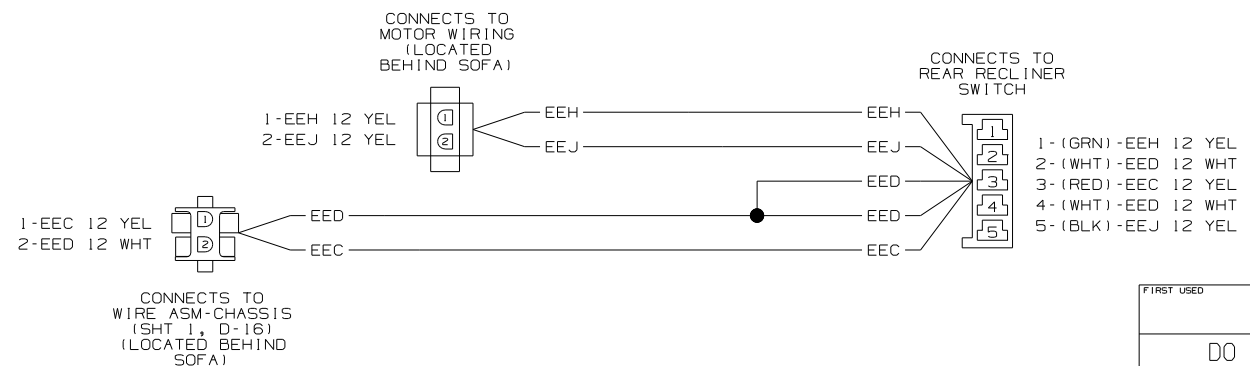
WIRING DIAGRAM-SOFA, DBL REST EASY (WIRE ASM 139583-01 REV-F)



WIRING DIAGRAM-SOFA, DBL REST EASY (WIRE ASM 139583-02 REV-F)



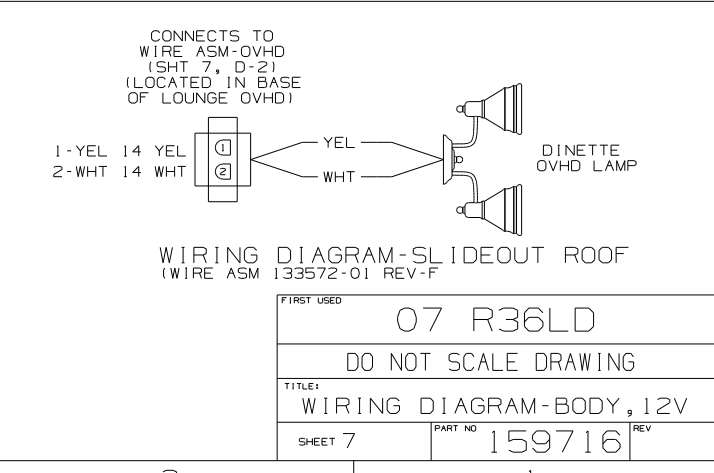
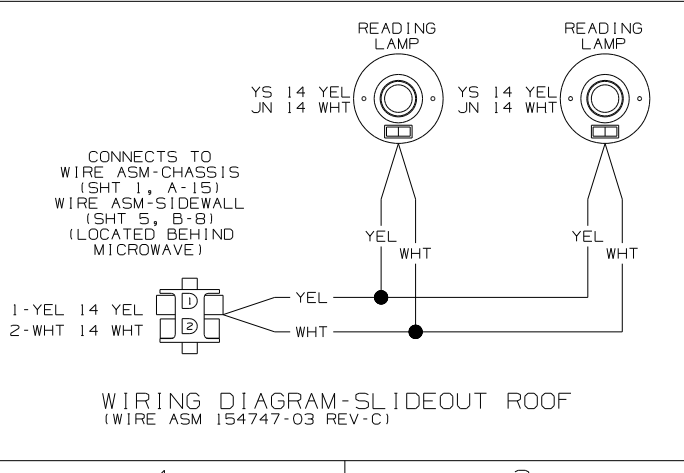
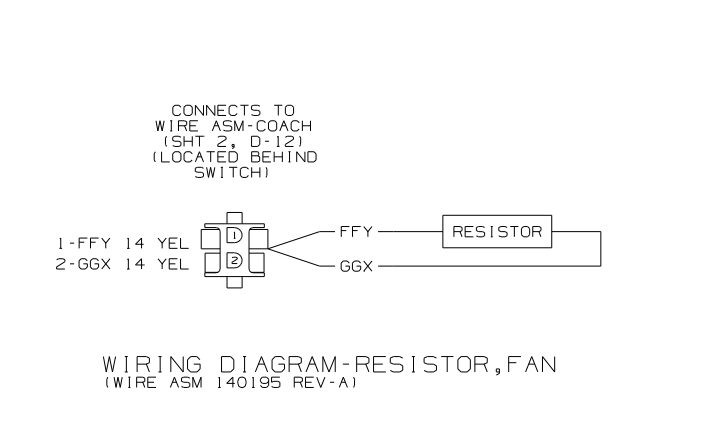
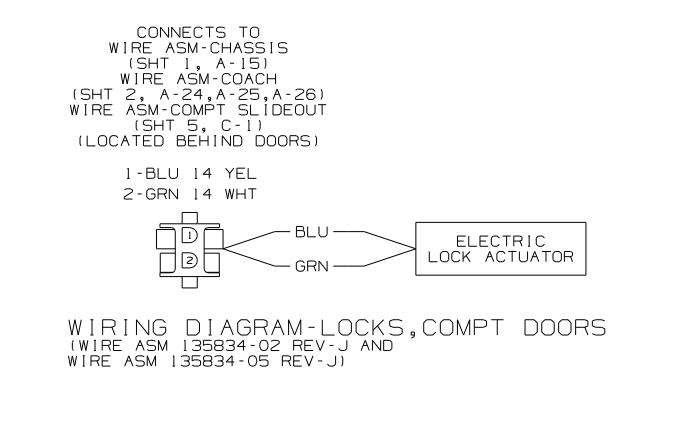
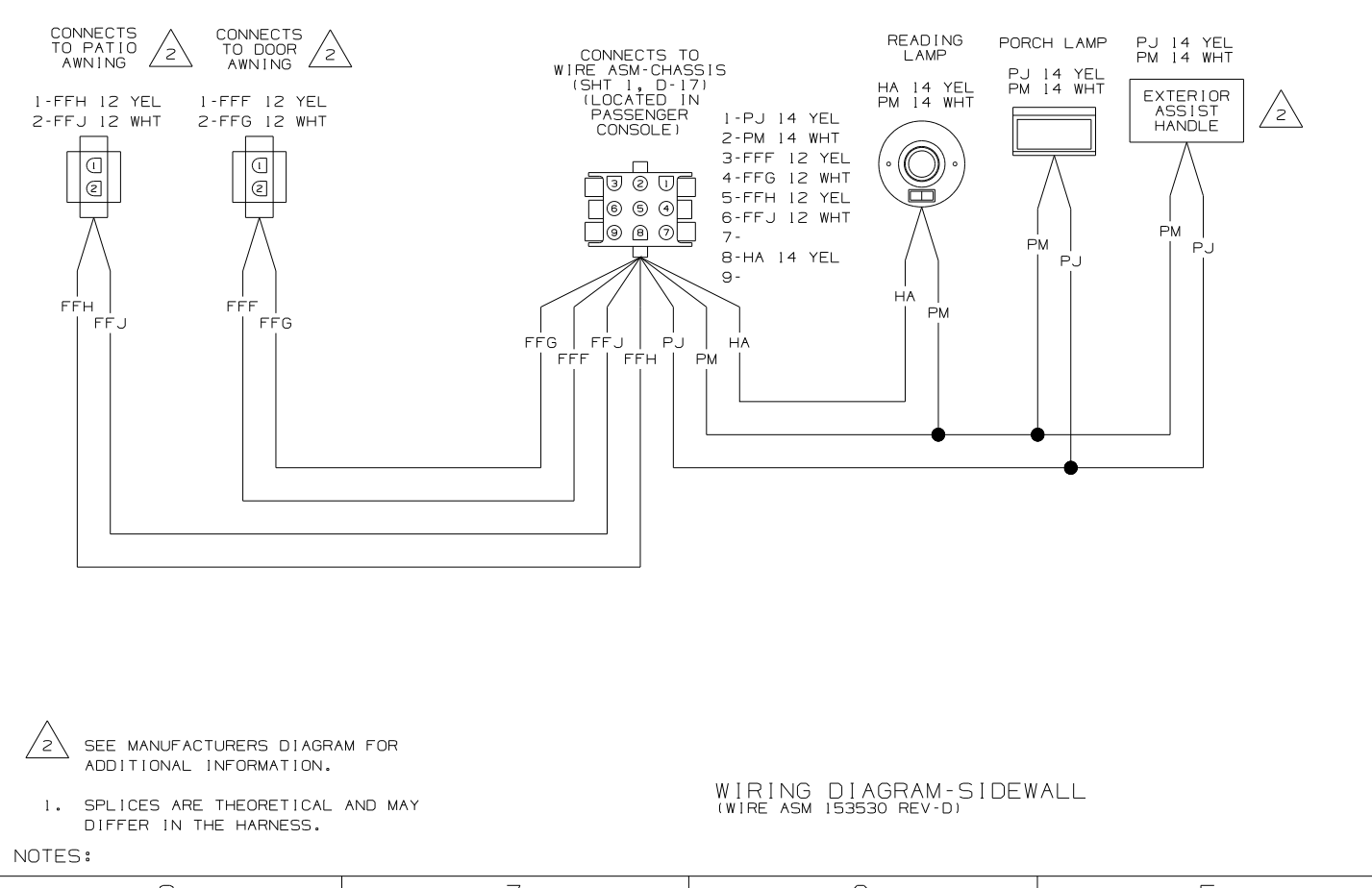
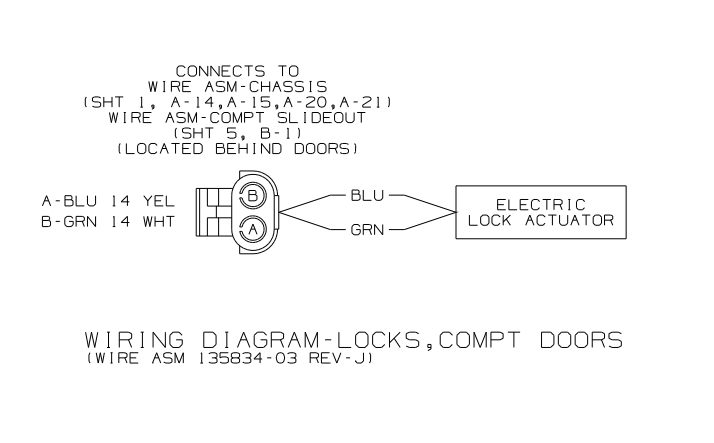
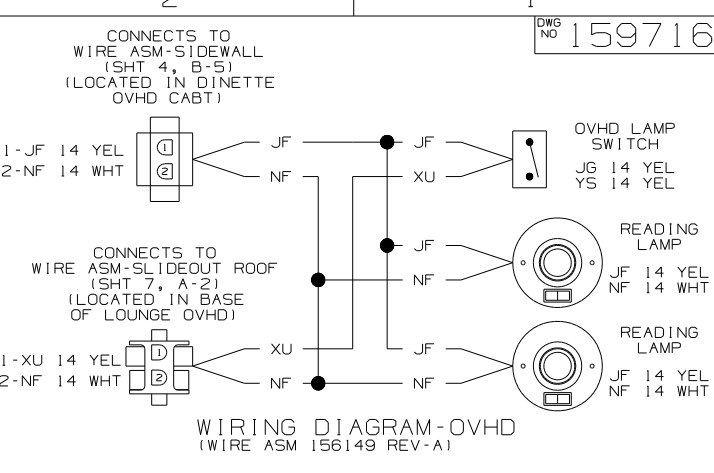
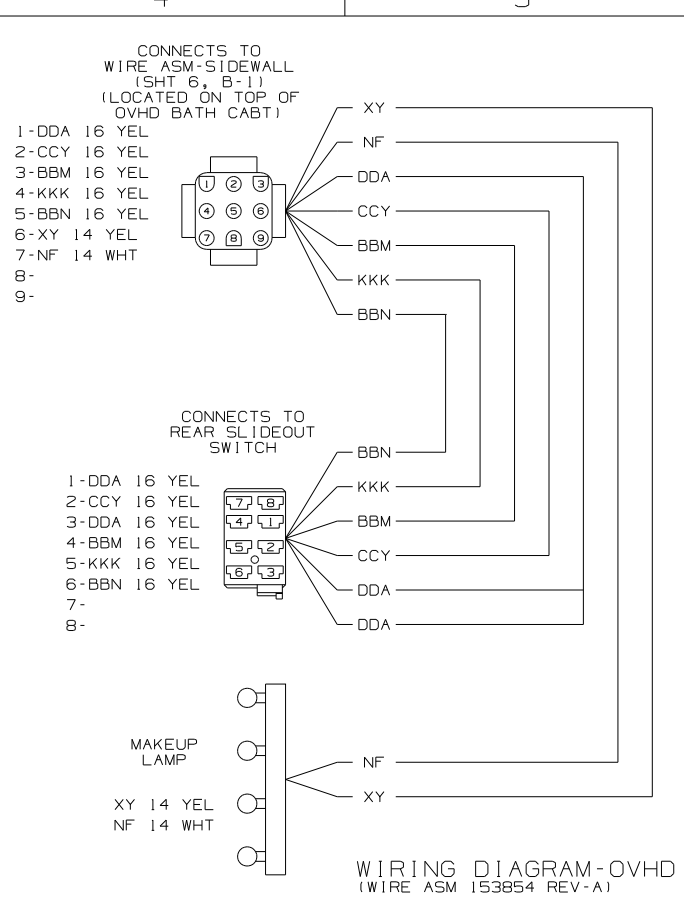
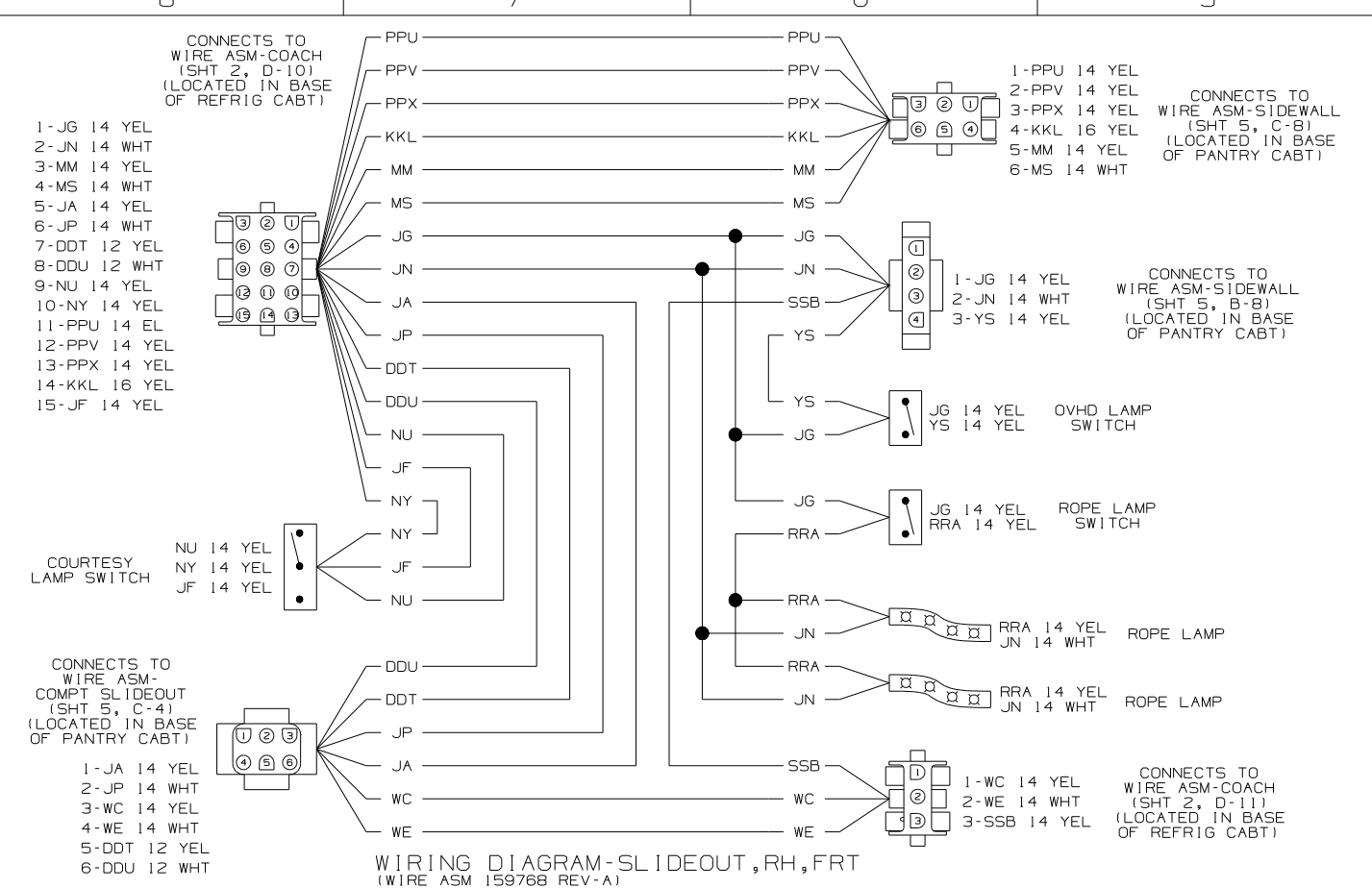
WIRING DIAGRAM-SIDEWALL (WIRE ASM 153514 REV-B)



WIRING DIAGRAM-SOFA, REST EASY (WIRE ASM 136028-01 REV-B)

- NOTES:
- 3 SEE WIRING DIAGRAM-AUTO FOR ADDITIONAL INFORMATION.
  - 2 SEE MANUFACTURERS DIAGRAM FOR ADDITIONAL INFORMATION.
  - 1. SPLICES ARE THEORETICAL AND MAY DIFFER IN THE HARNESS.

FIRST USED	07 R36LD		
TITLE	DO NOT SCALE DRAWING		
	WIRING DIAGRAM-BODY, 12V		
SHEET 6	PART NO	159716	REV



NOTES:

1. SPLICES ARE THEORETICAL AND MAY DIFFER IN THE HARNESS.

FIRST USED	07 R36LD
TITLE	DO NOT SCALE DRAWING
WIRING DIAGRAM-BODY, 12V	
SHEET 7	PART NO 159716 REV