



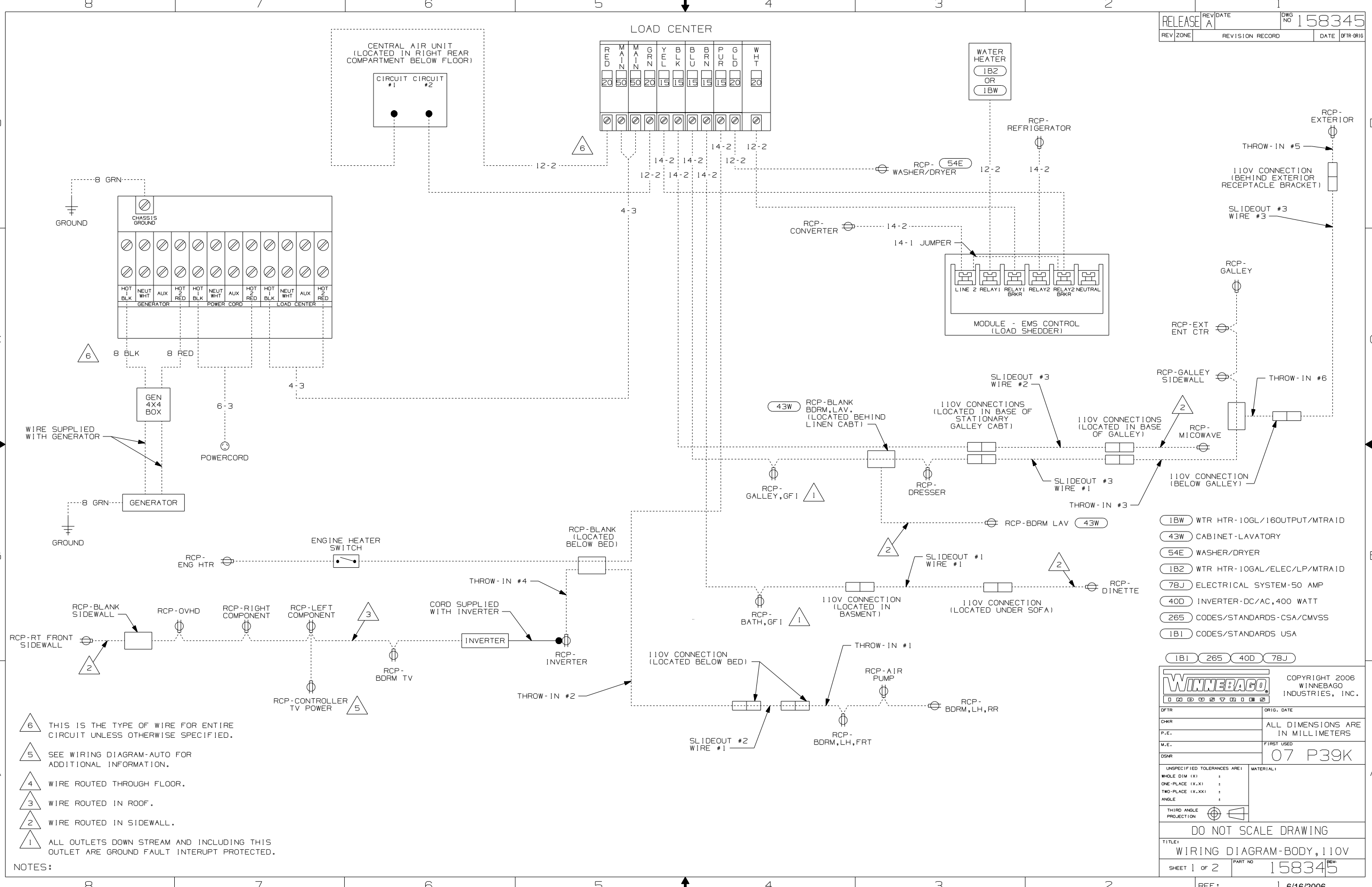
DANGER

Danger of electrical shock, burns or death. Always remove all power sources before attempting any repair, service or diagnostic work. Power can be present from shore power, generator, inverter or battery. All power sources must be disabled and secured before performing any service.



CAUTION

If you lack the skills, tools or equipment to perform diagnostic or repair work leave such work to an authorized Winnebago Industries dealer or other qualified shop.



- NOTES:
- △6 THIS IS THE TYPE OF WIRE FOR ENTIRE CIRCUIT UNLESS OTHERWISE SPECIFIED.
 - △5 SEE WIRING DIAGRAM-AUTO FOR ADDITIONAL INFORMATION.
 - △4 WIRE ROUTED THROUGH FLOOR.
 - △3 WIRE ROUTED IN ROOF.
 - △2 WIRE ROUTED IN SIDEWALL.
 - △1 ALL OUTLETS DOWN STREAM AND INCLUDING THIS OUTLET ARE GROUND FAULT INTERRUPT PROTECTED.

- 1BW WTR HTR-10GL/16OUTPUT/MTRAI D
- 43W CABINET-LAVATORY
- 54E WASHER/DRYER
- 1B2 WTR HTR-10GAL/ELEC/LP/MTRAI D
- 78J ELECTRICAL SYSTEM-50 AMP
- 40D INVERTER-DC/AC,400 WATT
- 265 CODES/STANDARDS-CSA/CMVSS
- 1B1 CODES/STANDARDS USA

WINNEBAGO		COPYRIGHT 2006 WINNEBAGO INDUSTRIES, INC.	
DFTR	ORIG. DATE		
CHKR	ALL DIMENSIONS ARE IN MILLIMETERS		
P.E.	FIRST USED	07 P39K	
M.E.			
DSNR			
UNSPECIFIED TOLERANCES ARE:		MATERIAL:	
WHOLE DIM (X)	:		
ONE-PLACE (X.X)	:		
TWO-PLACE (X.XX)	:		
ANGLE	:		
THIRD ANGLE PROJECTION			
DO NOT SCALE DRAWING			
TITLE: WIRING DIAGRAM-BODY, 110V			
SHEET 1 OF 2	PART NO	158345	
REF:	1 6/16/2006		

