



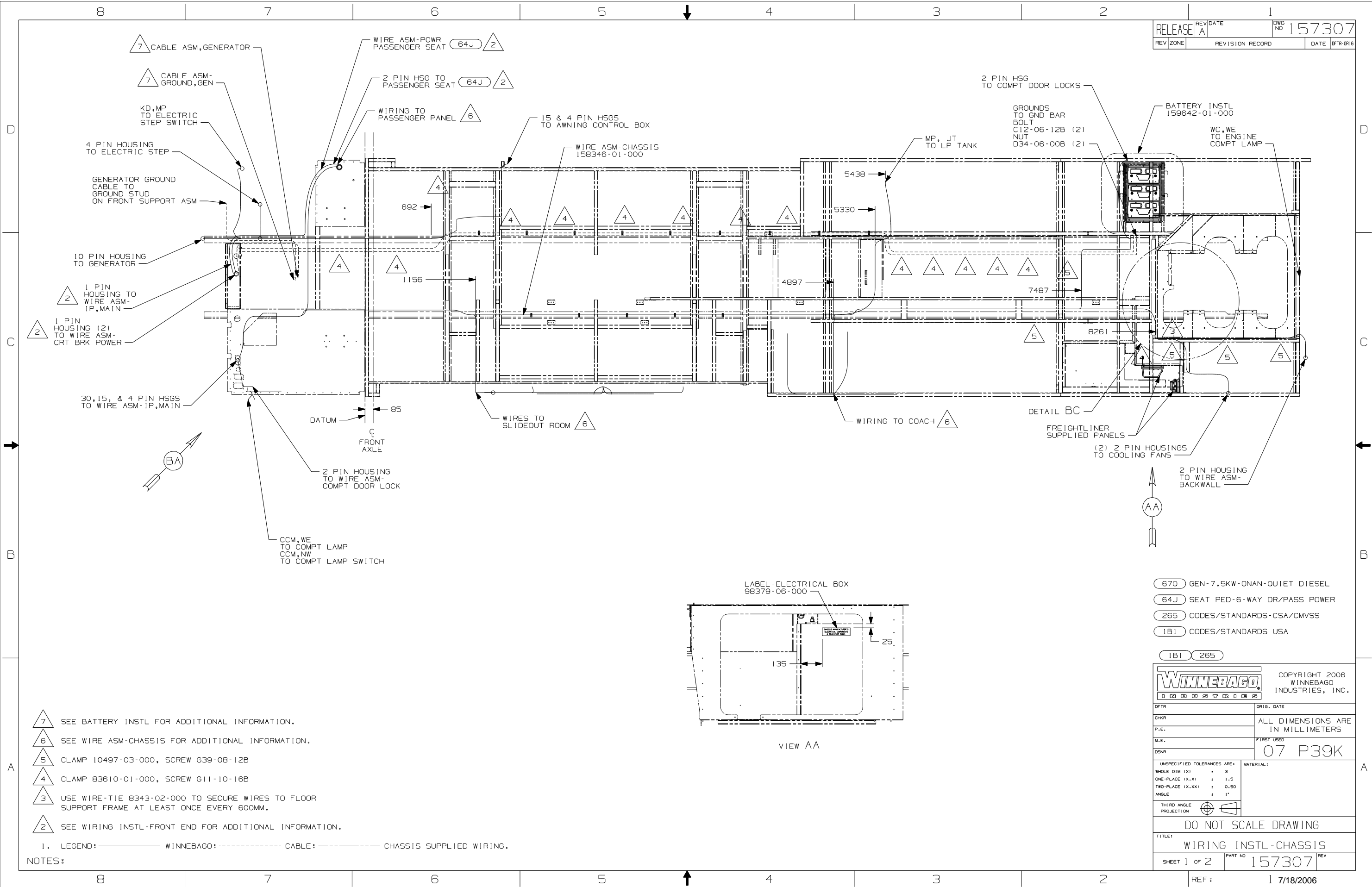
**DANGER**

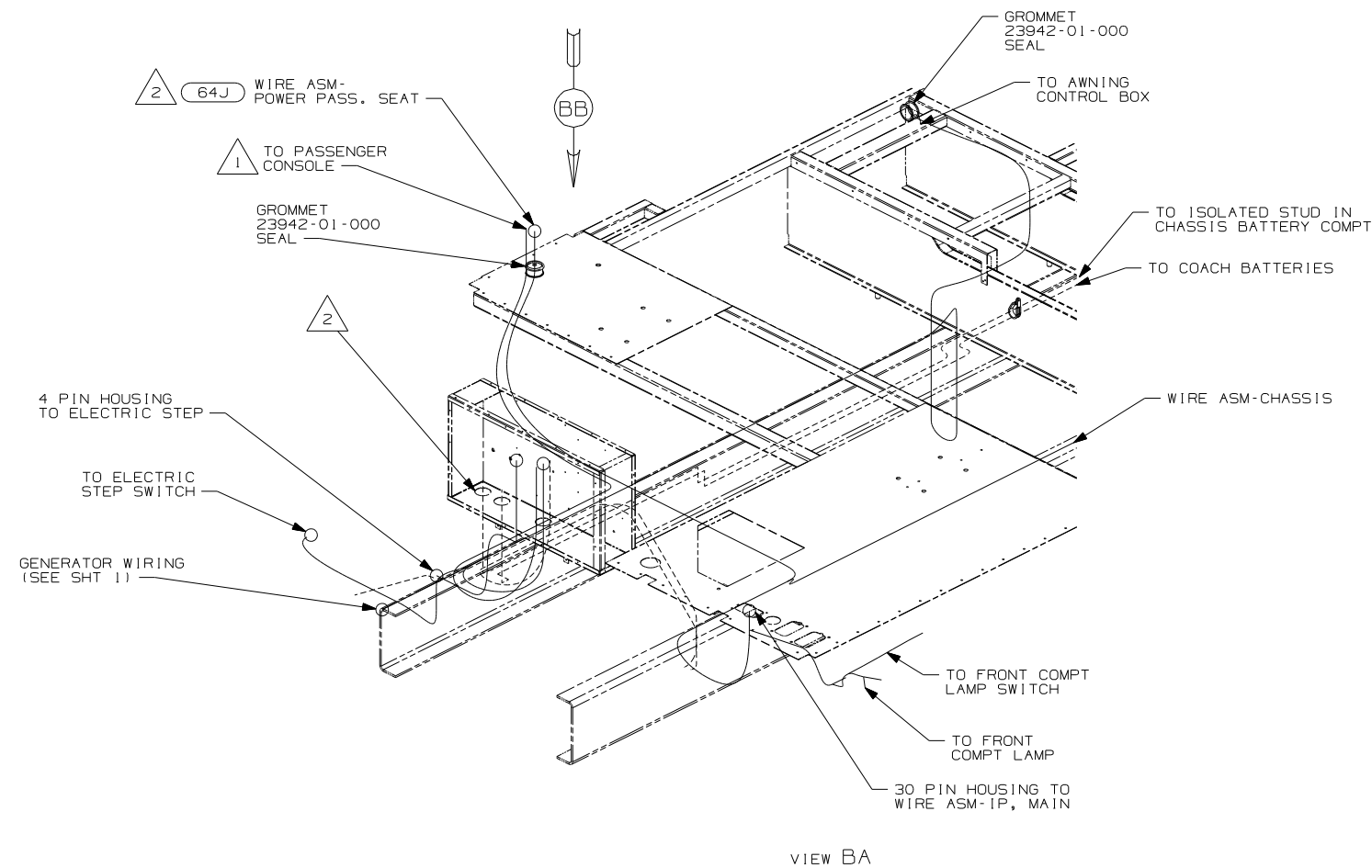
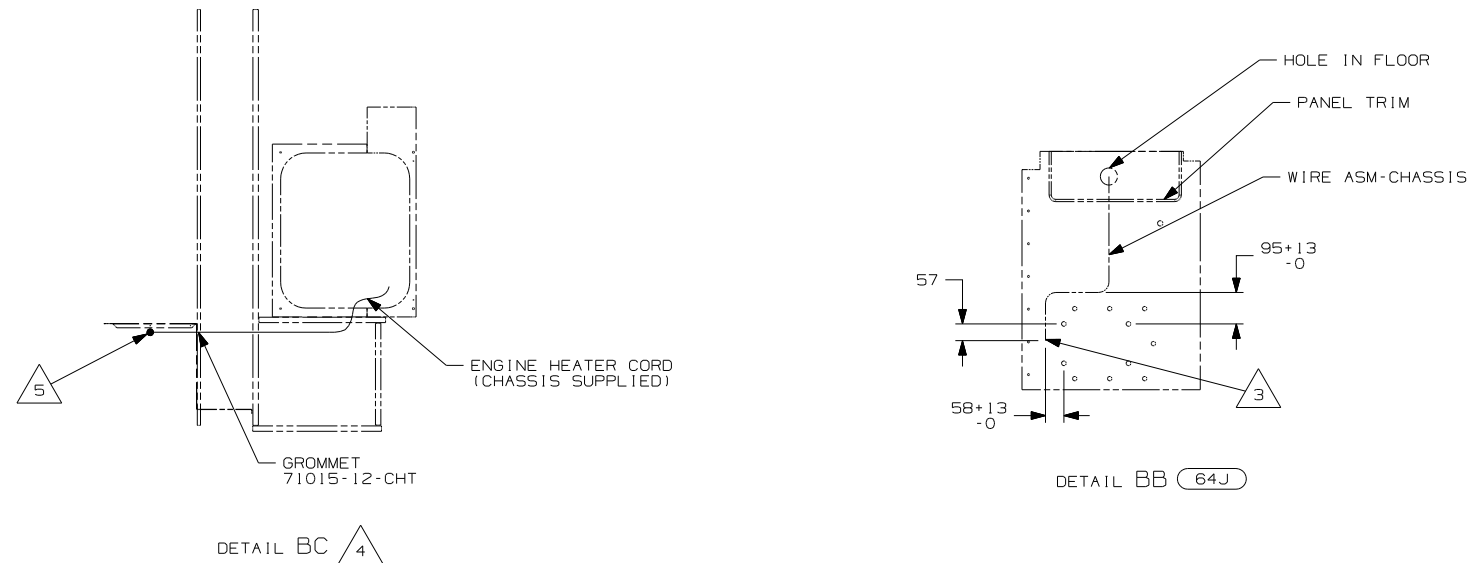
**Danger of electrical shock, burns or death.** Always remove all power sources before attempting any repair, service or diagnostic work. Power can be present from shore power, generator, inverter or battery. All power sources must be disabled and secured before performing any service.



**CAUTION**

If you lack the skills, tools or equipment to perform diagnostic or repair work leave such work to an authorized Winnebago Industries dealer or other qualified shop.





- NOTES:
- 5 ENGINE HEATER CORD MUST PASS THRU COMPT. AT LEAST 250MM TO PLUG INTO RECP.
  - 4 SECURE CORD AWAY FROM ALL MOVING PARTS AND EXHAUST WITH WIRE-TIE 93147-01-000 AS REQUIRED.
  - 3 LEAVE 675±50MM OF WIRE AT END POINT OF PATH.
  - 2 SEE WIRING INSTL-FRONT END FOR ADDITIONAL INFORMATION.
  - 1 SEE WIRE ASM-CHASSIS FOR ADDITIONAL INFORMATION.

64J SEAT PED-6-WAY DR/PASS POWER

265 CODES/STANDARDS-CSA/CMVSS

1B1 CODES/STANDARDS USA

FIRST USED	07 P39K	
TITLE	DO NOT SCALE DRAWING	
	WIRING INSTL-CHASSIS	
SHEET 2	PART NO 157307	REV