



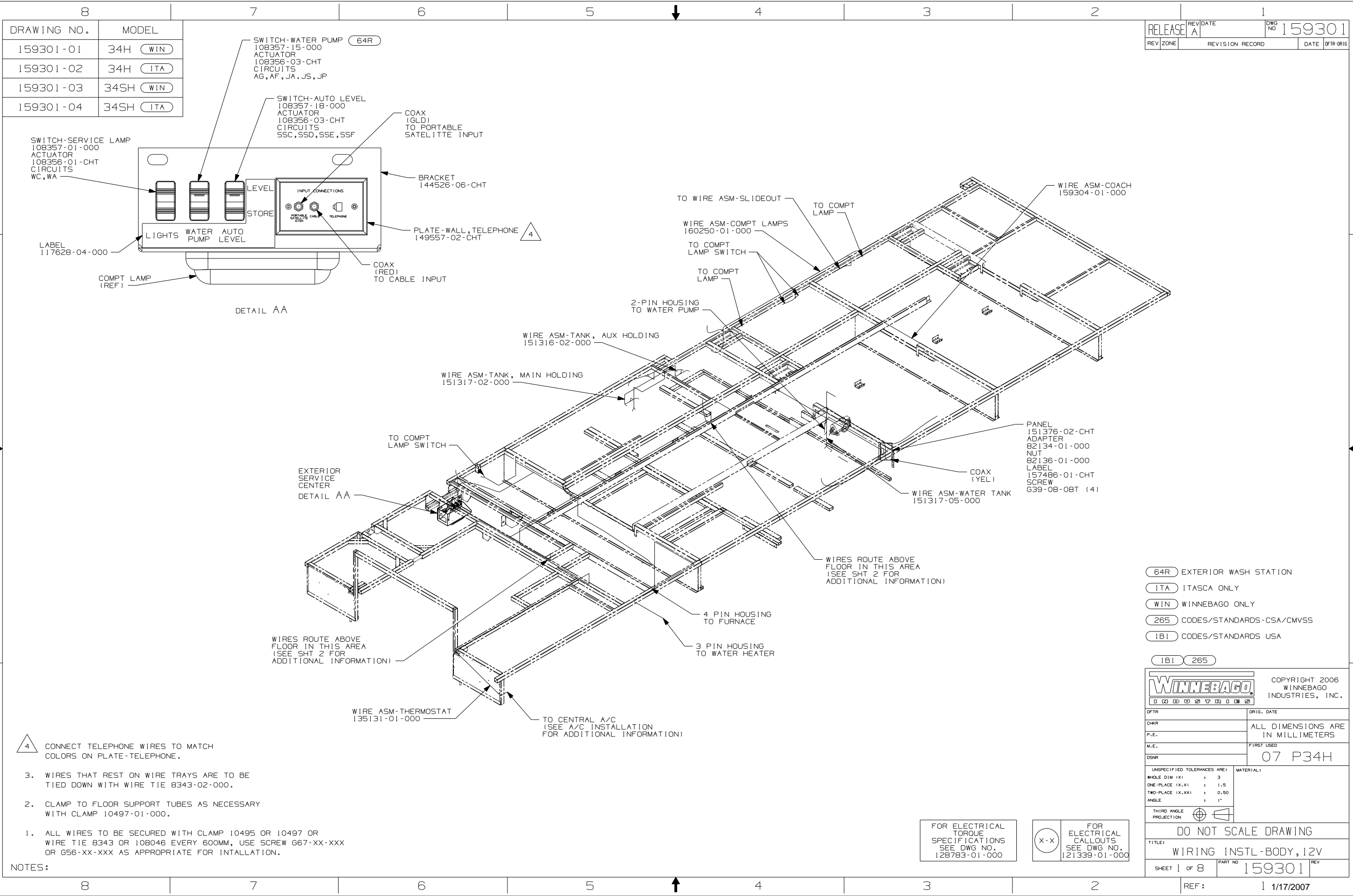
**DANGER**

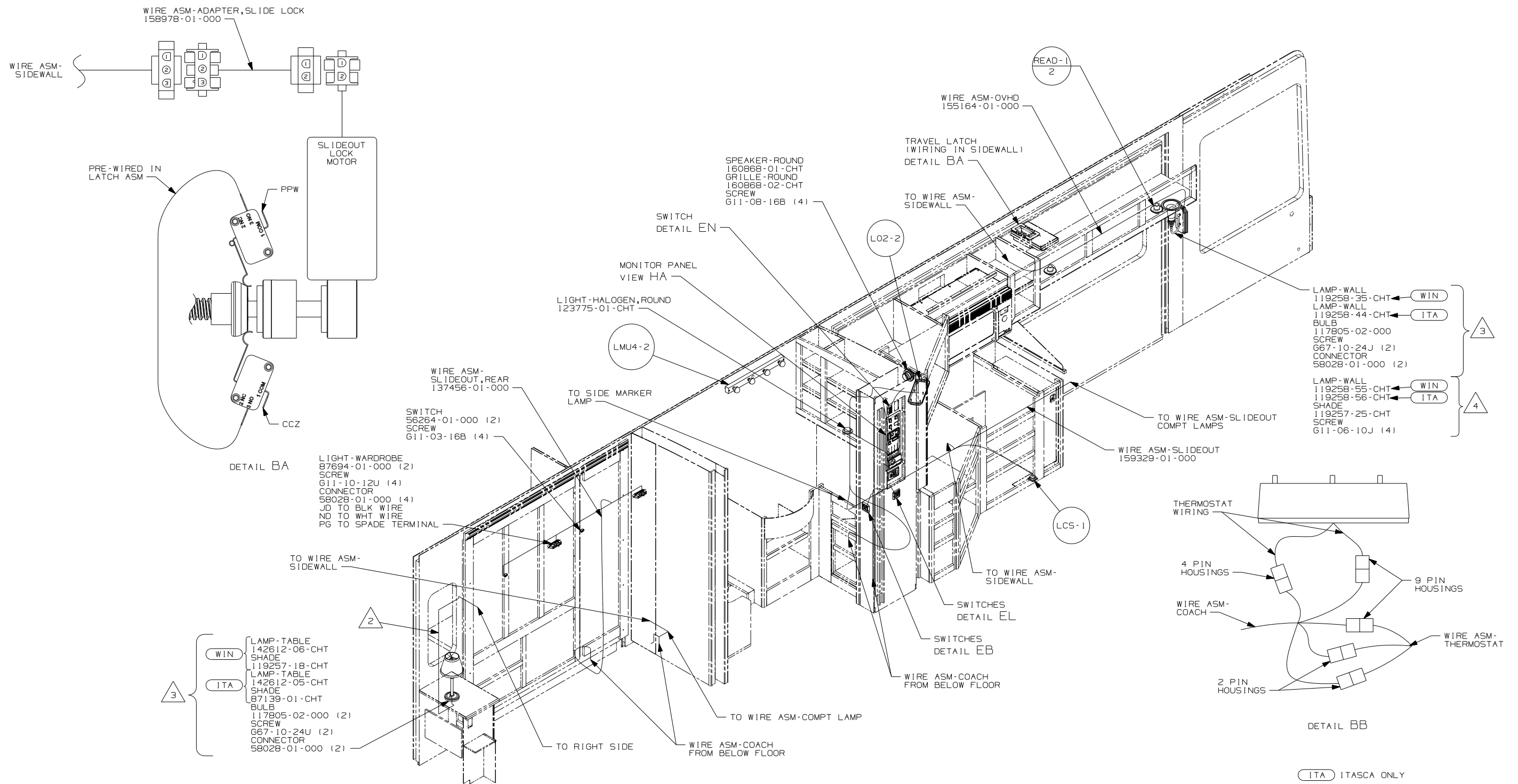
**Danger of electrical shock, burns or death.** Always remove all power sources before attempting any repair, service or diagnostic work. Power can be present from shore power, generator, inverter or battery. All power sources must be disabled and secured before performing any service.



**CAUTION**

If you lack the skills, tools or equipment to perform diagnostic or repair work leave such work to an authorized Winnebago Industries dealer or other qualified shop.





4	34SH MODELS ONLY
3	34H MOELS ONLY
2	WIRE ROUTES OUT BACKWALL FROM OVHD AND BACK IN BACKSIDE OF NIGHTSTAND.

1. ALL WIRES TO BE SECURED WITH CLAMP 10495 OR 10497 OR WIRE TIE 8343 OR 108046 EVERY 600MM, USE SCREW G67-XX-XXX OR G56-XX-XXX AS APPROPRIATE FOR INTALLATION.

NOTES:

FOR ELECTRICAL  
TORQUE  
SPECIFICATIONS  
SEE DWG NO.  
128783-01-000

	FOR ELECTRICAL CALLOUTS SEE DWG NO. 121339-01-000
---	---

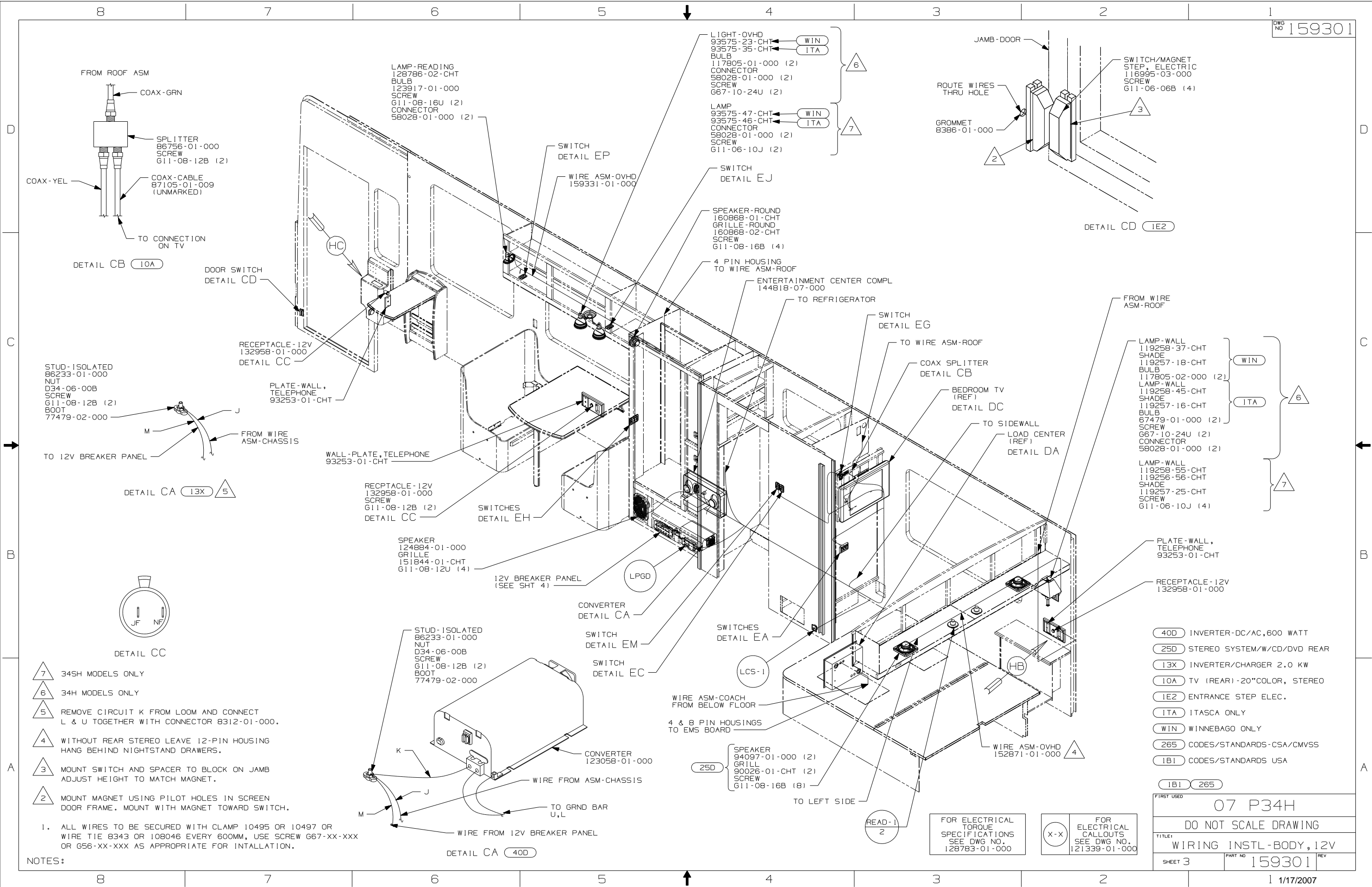
ITA ITASCA ONLY

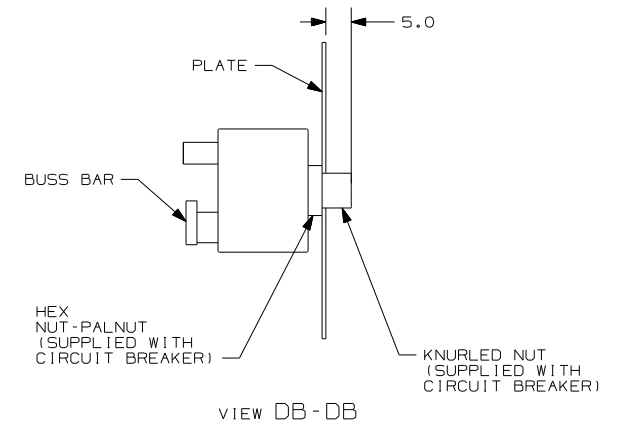
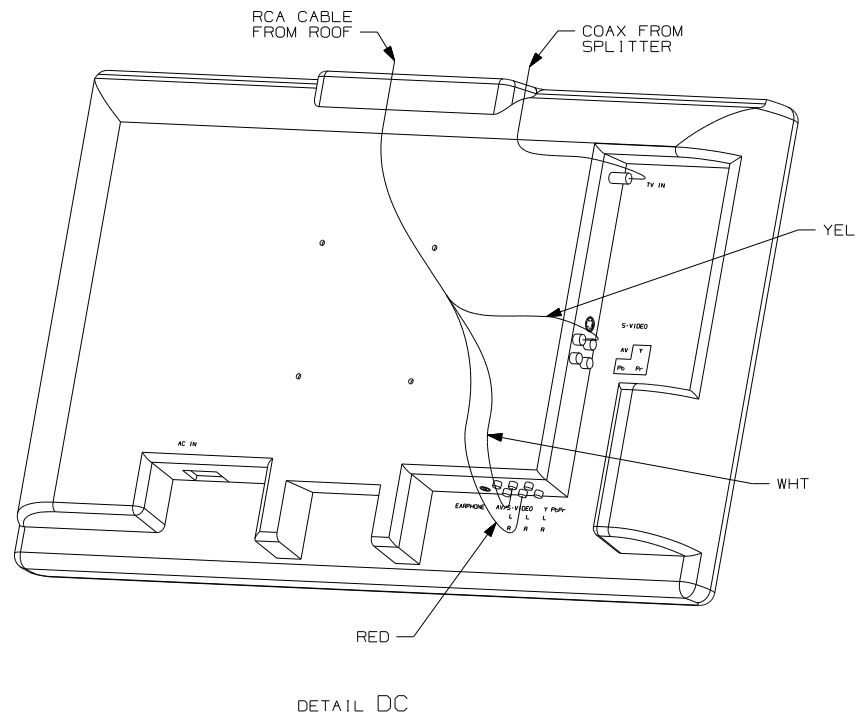
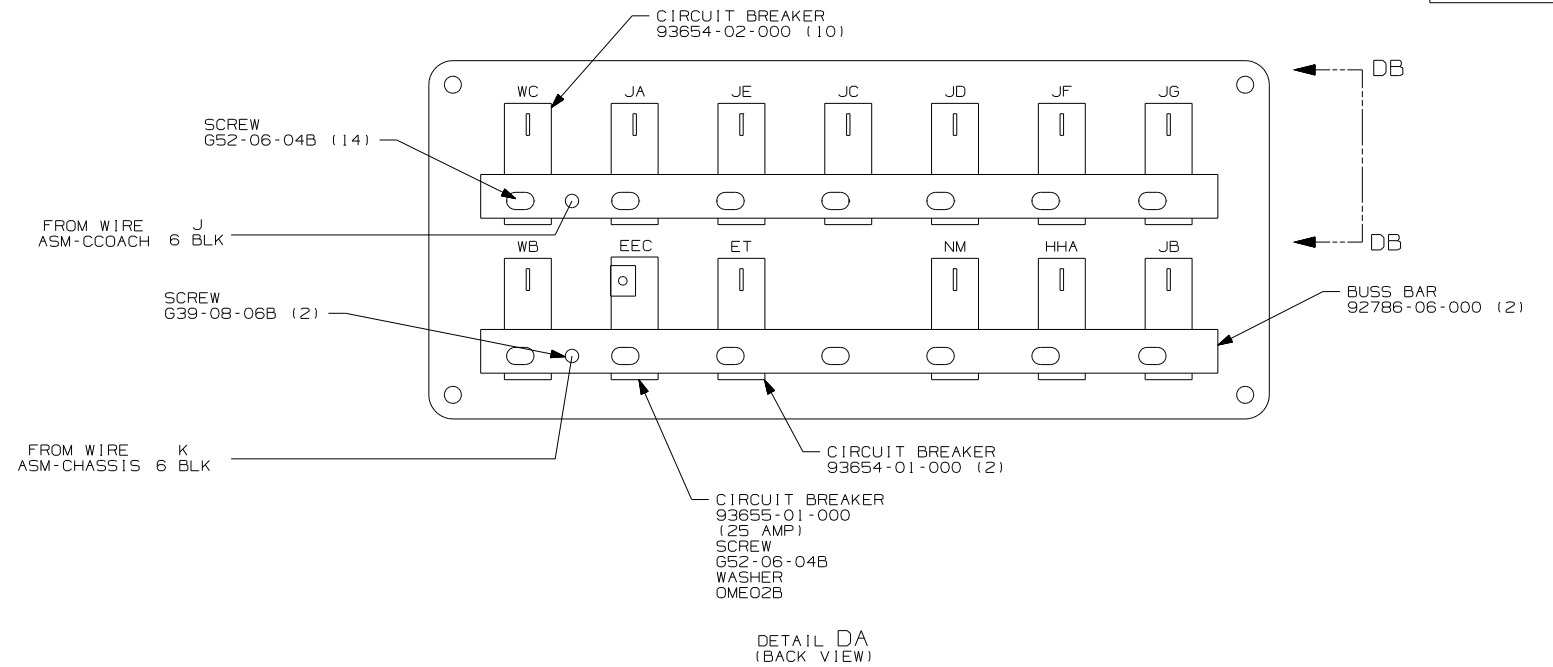
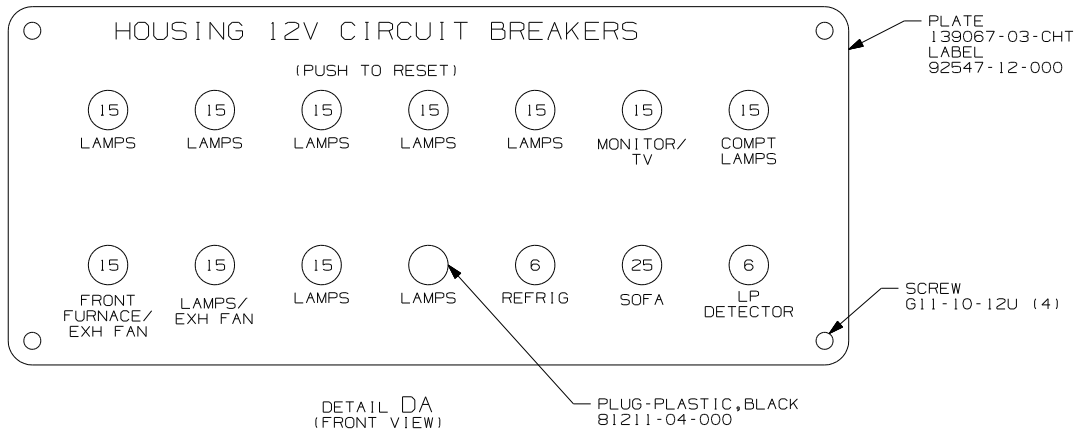
WIN WINNEBAGO ONLY

265 CODES/STANDARDS-CSA/CMVSS

IB1 CODES/STANDARDS USA

FIRST USED		07 P34H	
DO NOT SCALE DRAWING			
TITLE:			
WIRING INSTL - BODY, 12V			
SHEET 2	PART NO	159301	REV





FOR ELECTRICAL TORQUE SPECIFICATIONS SEE DWG NO. 128783-01-000

FOR ELECTRICAL CALLOUTS SEE DWG NO. 121339-01-000

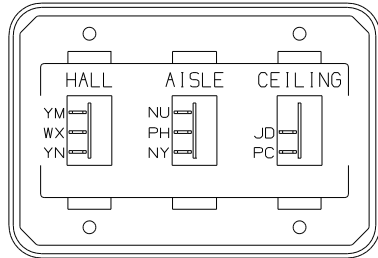
265 CODES/STANDARDS-CSA/CMVSS

1B1 CODES/STANDARDS USA

1B1 265

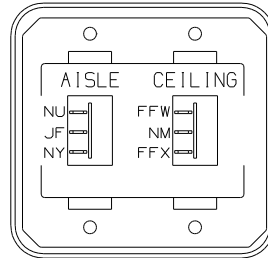
FIRST USED		
07 P34H		
DO NOT SCALE DRAWING		
TITLE: WIRING INSTL-BODY, 12V		
SHEET 4	PART NO	REV
	159301	

1 1/17/2007



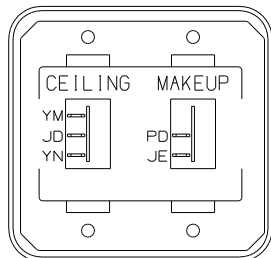
SWITCH-ROCKER  
135740-01-CHT  
135740-02-CHT (2)  
SWITCH-BASE  
135741-03-CHT  
SWITCH-BEZEL  
135742-25-CHT  
SCREW  
G11-08-08U (4)

DETAIL EA



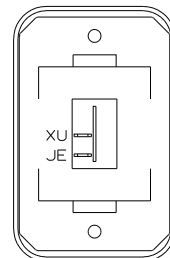
SWITCH-ROCKER  
135740-01-CHT (2)  
SWITCH-BASE  
135741-02-CHT  
SWITCH-BEZEL  
135742-13-CHT  
SCREW  
G11-08-08U (4)

DETAIL EH



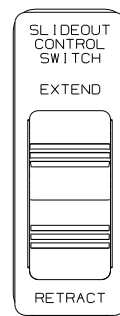
SWITCH-ROCKER  
135740-01-CHT  
135740-02-CHT  
SWITCH-BASE  
135741-02-CHT  
SWITCH-BEZEL  
135742-14-CHT  
SCREW  
G11-08-08U (4)

DETAIL EB



SWITCH-ROCKER  
135740-01-CHT  
SWITCH-BASE  
135741-01-CHT  
SWITCH-BEZEL  
135742-01-CHT  
SCREW  
G11-08-08U (2)

DETAIL EJ

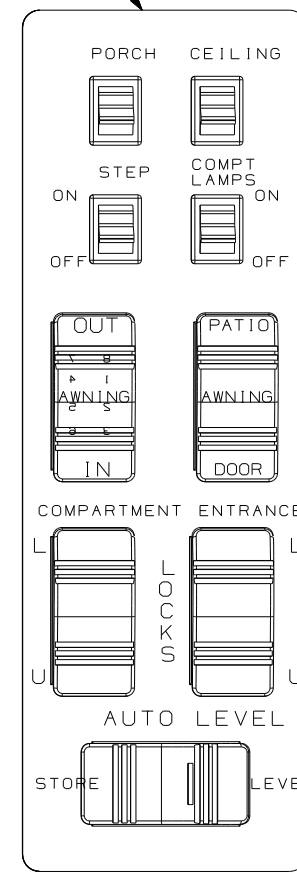


DETAIL EG

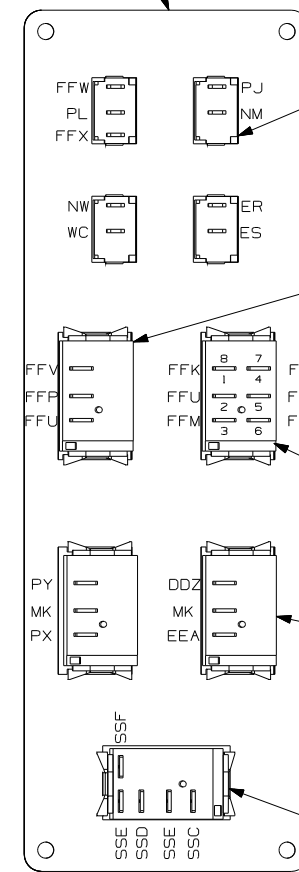
PLATE-SWITCH  
144363-09-CHT  
SWITCH  
108357-06-000  
ACTUATOR  
108356-01-CHT  
NUX  
D65-08-00B (2)  
LABEL  
116220-01-000  
DDA, CCY, DGA, BBM, CCZ, BBN

**WARNING**  
UNDERSTAND OPERATOR'S MANUAL  
BEFORE USING KEEP PEOPLE AND  
OBSTRUCTIONS CLEAR OF SLIDEOUT  
ROOM WHEN OPERATING TO AVOID  
INJURY AND/OR PROPERTY DAMAGE

LABEL-WARNING  
116549-02-000



DETAIL EE  
(FRONT SIDE)



DETAIL EE  
(BACK SIDE)

SWITCH  
132180-01-CHT (3)  
132180-02-CHT

SWITCH-AWNING SELECTOR  
108357-08-000  
ACTUATOR  
108356-13-CHT  
SWITCH-BLANK  
96241-03-000 (1)

SWITCH-AWNING SELECTOR  
108357-06-000  
ACTUATOR  
108356-13-CHT  
SWITCH-BLANK  
96241-03-000 (1)

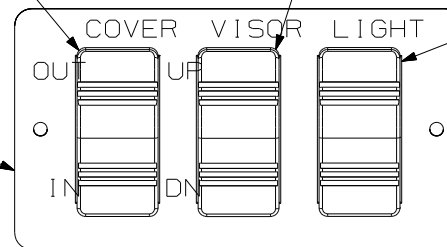
SWITCH-DOOR LOCKS  
108357-07-000 (2)  
ACTUATOR  
108356-01-CHT (2)

SWITCH-AUTO LEVEL  
108357-18-000  
ACTUATOR  
108356-03-CHT

SWITCH-BLANK  
96241-03-000 (28K)  
SWITCH-VISOR  
108357-16-000  
ACTUATOR-SWITCH  
108356-01-CHT  
CIRCUITS  
HHM, HHN, MK, PPJ, PPK (28J)

SWITCH-COVER  
108357-06-000  
ACTUATOR-SWITCH  
108356-01-CHT  
CIRCUITS  
GX, KA, HHC, HDD

PLATE-SWITCH  
142487-01-CHT  
APPLIQUE  
142475-01-CHT  
SCREW  
G11-06-10U (2)



DETAIL EF

SWITCH-LAMPS  
108357-01-000  
ACTUATOR-SWITCH  
108356-01-CHT

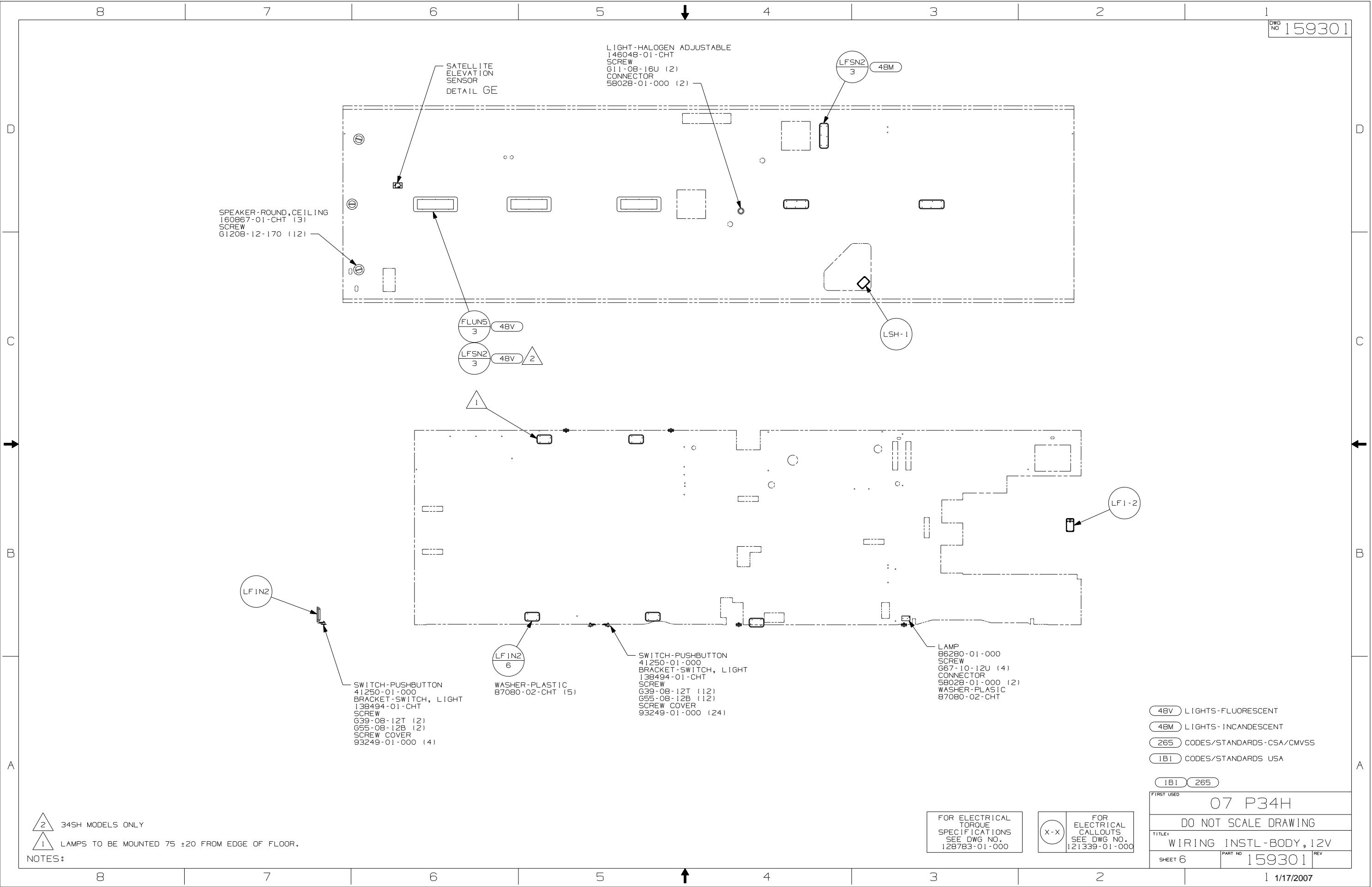
FOR ELECTRICAL  
TORQUE  
SPECIFICATIONS  
SEE DWG NO.  
128783-01-000

FOR ELECTRICAL  
CALLOUTS  
SEE DWG NO.  
121339-01-000

- (52N) AWNING - PATIO, ELECTRIC
- (28K) SUNVISORS - MANUAL (2)
- (28J) SUNVISORS - POWERED (2)
- (ITA) ITASCA ONLY
- (WIN) WINNEBAGO ONLY
- (265) CODES/STANDARDS-CSA/CMVSS
- (1B1) CODES/STANDARDS USA

FIRST USED	07 P34H
TITLE	DO NOT SCALE DRAWING
WIRING INSTL-BODY, 12V	
SHEET 5	PART NO 159301 REV

NOTES:  
1 WITHOUT (52N)



SPEAKER-ROUND,CEILING  
160867-01-CHT (3)  
SCREW  
G1208-12-170 (12)

SATELLITE  
ELEVATION  
SENSOR  
DETAIL GE

LIGHT-HALOGEN ADJUSTABLE  
146048-01-CHT  
SCREW  
G11-08-16U (2)  
CONNECTOR  
58028-01-000 (2)

LFSN2  
3 48M

FLUN5  
3 48V

LFSN2  
3 48V 2

LSH-1

LF1-2

LF1N2

SWITCH-PUSHBUTTON  
41250-01-000  
BRACKET-SWITCH, LIGHT  
138494-01-CHT  
SCREW  
G39-08-12T (2)  
G55-08-12B (2)  
SCREW COVER  
93249-01-000 (4)

LF1N2  
6

WASHER-PLASTIC  
87080-02-CHT (5)

SWITCH-PUSHBUTTON  
41250-01-000  
BRACKET-SWITCH, LIGHT  
138494-01-CHT  
SCREW  
G39-08-12T (12)  
G55-08-12B (12)  
SCREW COVER  
93249-01-000 (24)

LAMP  
86280-01-000  
SCREW  
G67-10-12U (4)  
CONNECTOR  
58028-01-000 (2)  
WASHER-PLASTIC  
87080-02-CHT

48V LIGHTS-FLUORESCENT  
48M LIGHTS-INCANDESCENT  
265 CODES/STANDARDS-CSA/CMVSS  
1B1 CODES/STANDARDS USA

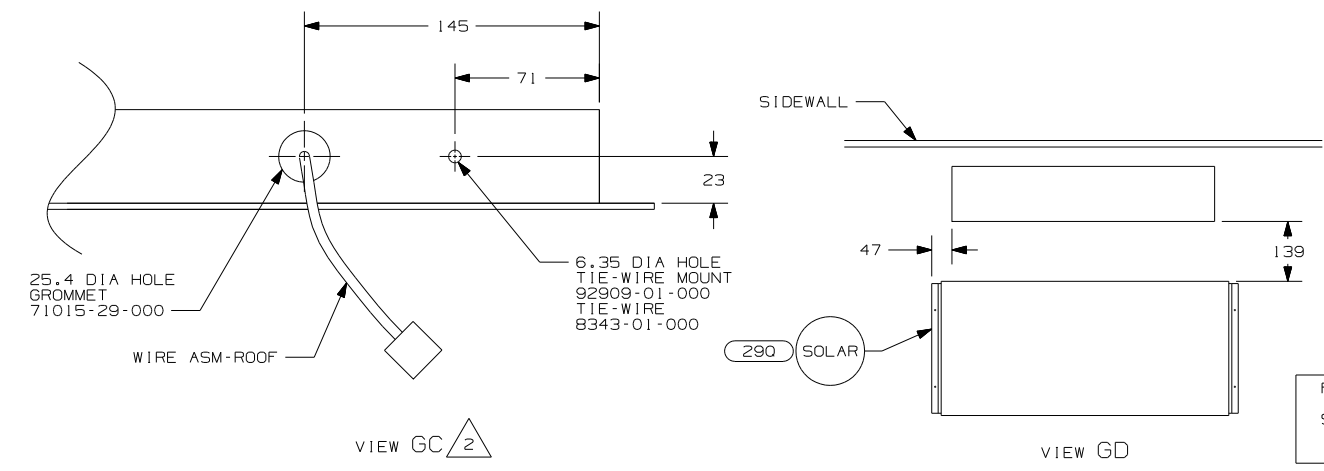
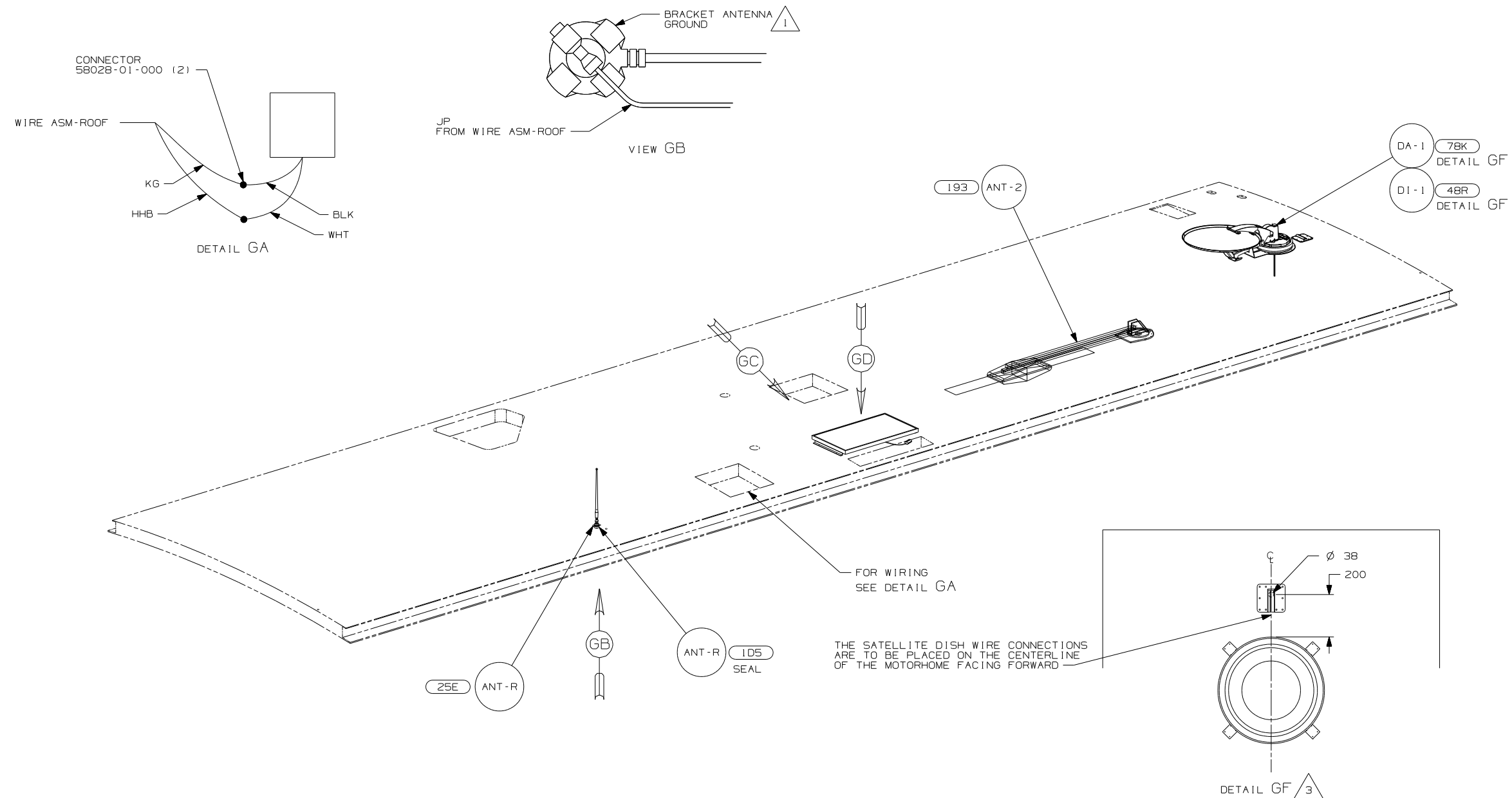
1B1 265

FIRST USED		
07 P34H		
DO NOT SCALE DRAWING		
TITLE		
WIRING INSTL-BODY,12V		
SHEET 6	PART NO	REV
	159301	

NOTES:  
2 34SH MODELS ONLY  
1 LAMPS TO BE MOUNTED 75 ±20 FROM EDGE OF FLOOR.

FOR ELECTRICAL  
TORQUE  
SPECIFICATIONS  
SEE DWG NO.  
128783-01-000

FOR  
ELECTRICAL  
CALLOUTS  
SEE DWG NO.  
121339-01-000



- NOTES:
- 3 REMOVE ALL SHIPPING RESTRAINTS AND FIRMLY INSERT THE SUPPLIED PLUGS INTO THE APPROPRIATE SIZED HOLES AS SPECIFIED IN THE INSTALLATION PROCESS.
  - 2 FASTEN TO VENT.
  - 1 WRAP BRACKET LEGS AROUND ANTENNA BASE.

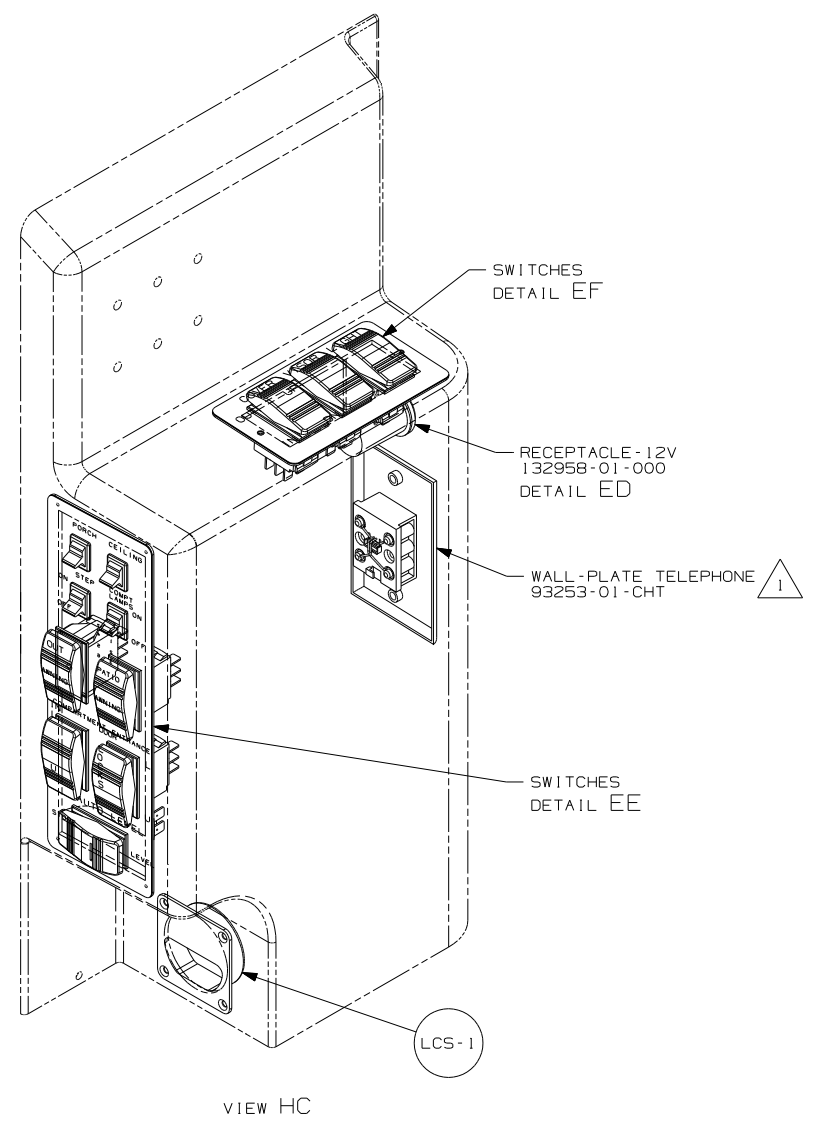
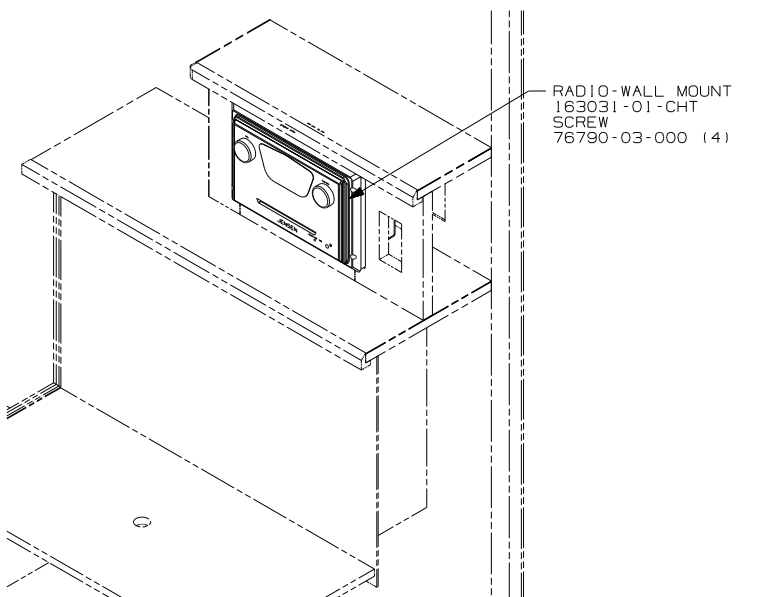
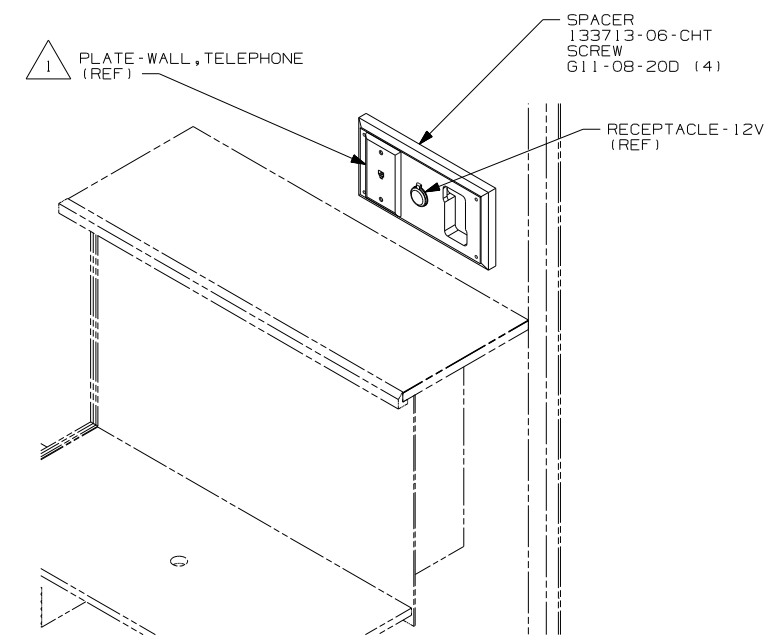
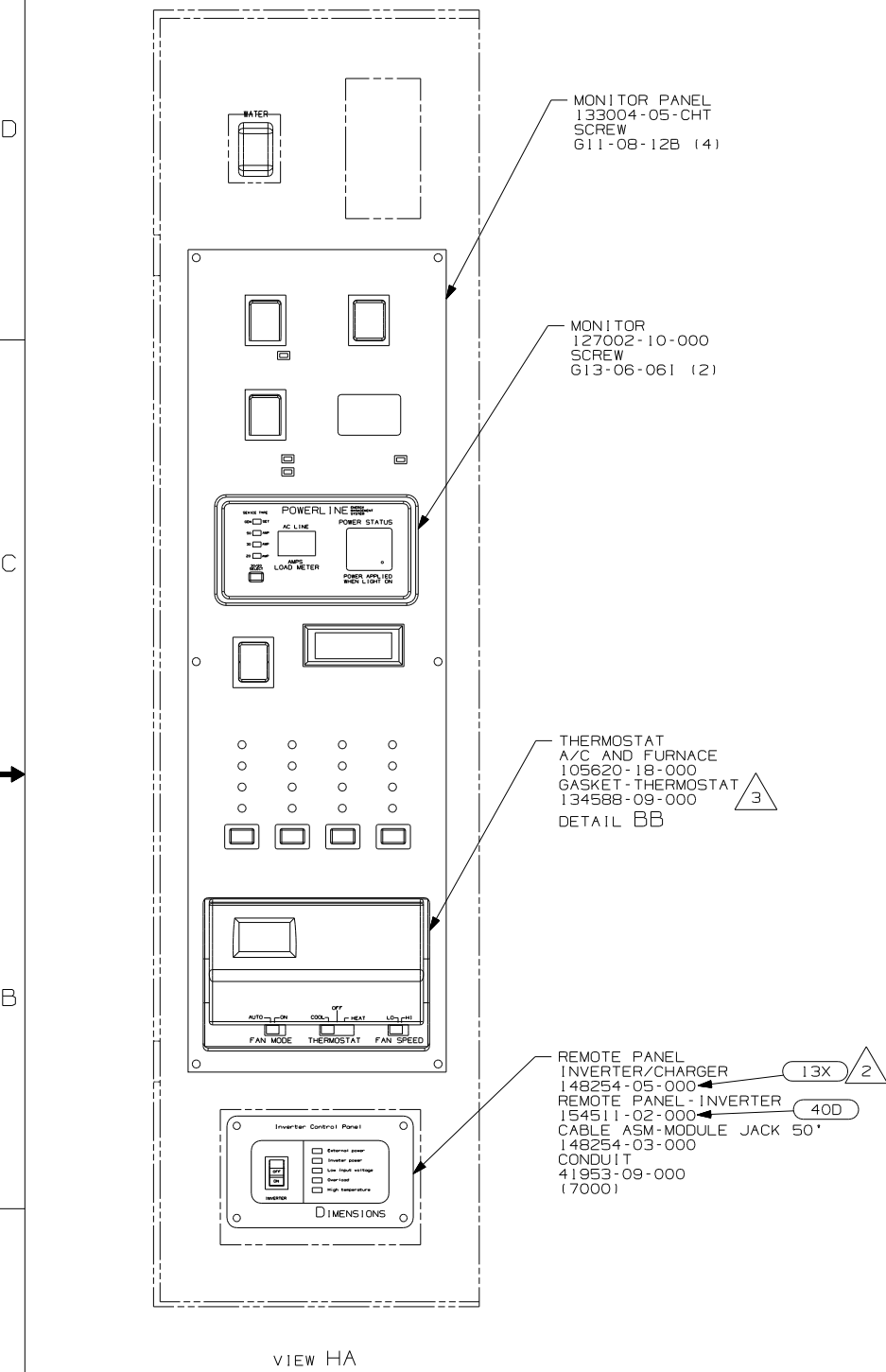
- 25E STEREO SYSTEM W/CD REAR
- 48R SAT SYS IN-MOTION W/O RCVR
- 78K SATELLITE DISH-AUTOMATIC
- 480 SATELLITE DISH & ELEV.SENSOR
- 290 SOLAR PANEL-10 WATT
- 105 ENTERTAINMENT CENTR/EXT W/CD
- 193 TV ANTENNA-AMPLIFIED SYSTEM
- 265 CODES/STANDARD-CSA/CMVSS
- 181 CODES/STANDARDS USA

FOR ELECTRICAL TORQUE SPECIFICATIONS SEE DWG NO. 128783-01-000

FOR ELECTRICAL CALLOUTS SEE DWG NO. 121339-01-000

FIRST USED		07 P34H	
		DO NOT SCALE DRAWING	
TITLE:		WIRING INSTL-BODY, 12V	
SHEET 7	PART NO	159301	REV





- 3 INSTALL GASKET ON BACK SIDE OF ONE PLACE AFTER INSTALLATION OF THERMOSTAT, MAKING SURE THAT THE GASKET COVERS AND SEALS THE HOLE THAT THE WIRES PASS THROUGH.
- 2 CONNECT CIRCUIT WB FROM COACH WIRING TO RED WIRE ON REMOTE PANEL.
- 1 CONNECT TELEPHONE WIRES TO MATCHING COLORS ON PLATE-TELRPHONE.

NOTES:

FOR ELECTRICAL  
TORQUE  
SPECIFICATIONS  
SEE DWG NO.  
128783-01-000

FOR  
ELECTRICAL  
CALLOUTS  
SEE DWG NO.  
121339-01-000

- 40D INVERTER-DC/AC,600 WATT
- 26K REAR STEREO SYSTEM WITHOUT
- 25D STEREO SYSTEM/W/CD/DVD REAR
- 13X INVERTER/CHARGER 2.0 KW
- 265 CODES/STANDARDS-CSA/CMVSS
- 1B1 CODES/STANDARDS USA

FIRST USED		07 P34H
DO NOT SCALE DRAWING		
TITLE:		WIRING INSTL-BODY,12V
SHEET 8	PART NO	159301
		REV