



**DANGER**

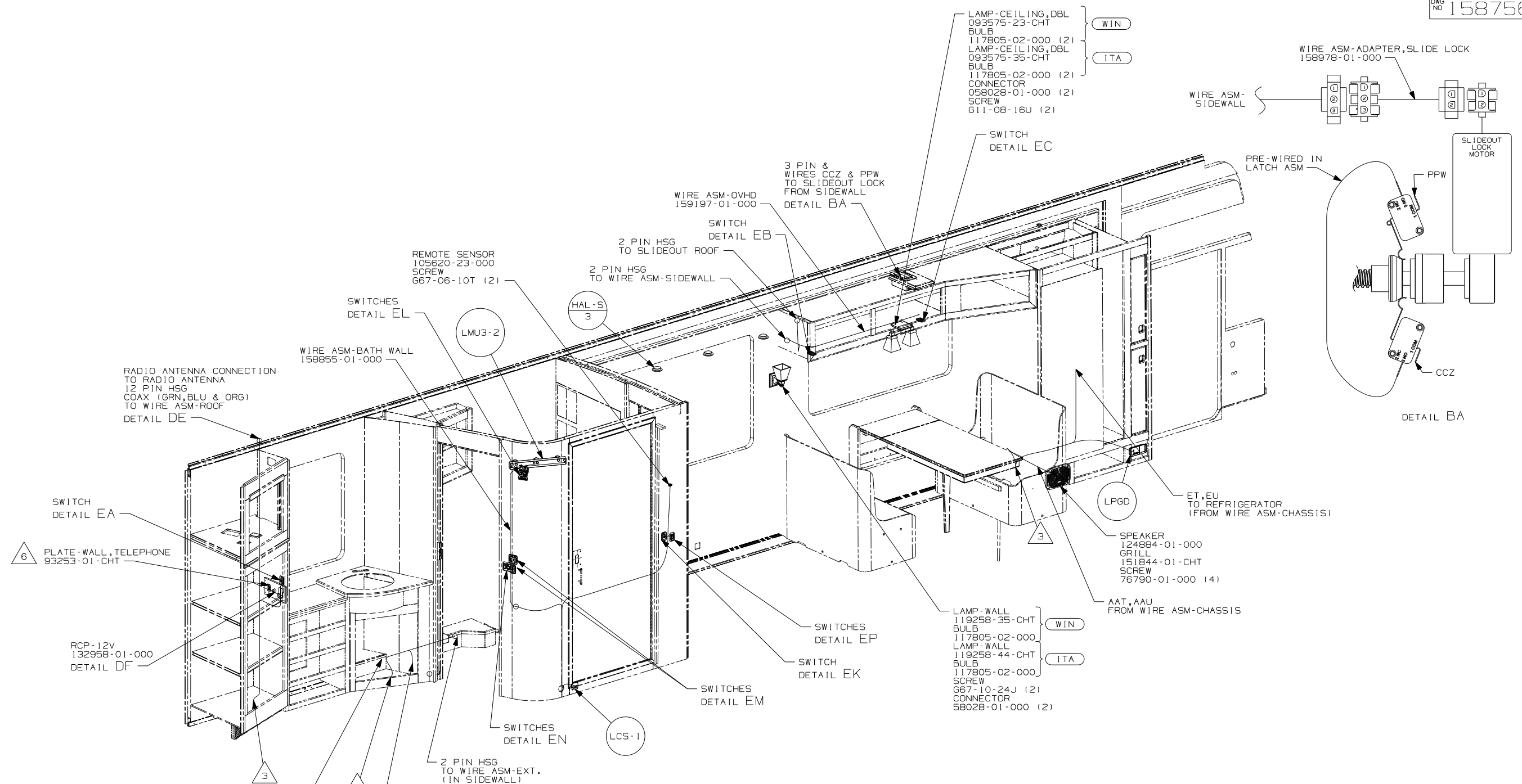
**Danger of electrical shock, burns or death.** Always remove all power sources before attempting any repair, service or diagnostic work. Power can be present from shore power, generator, inverter or battery. All power sources must be disabled and secured before performing any service.



**CAUTION**

If you lack the skills, tools or equipment to perform diagnostic or repair work leave such work to an authorized Winnebago Industries dealer or other qualified shop.





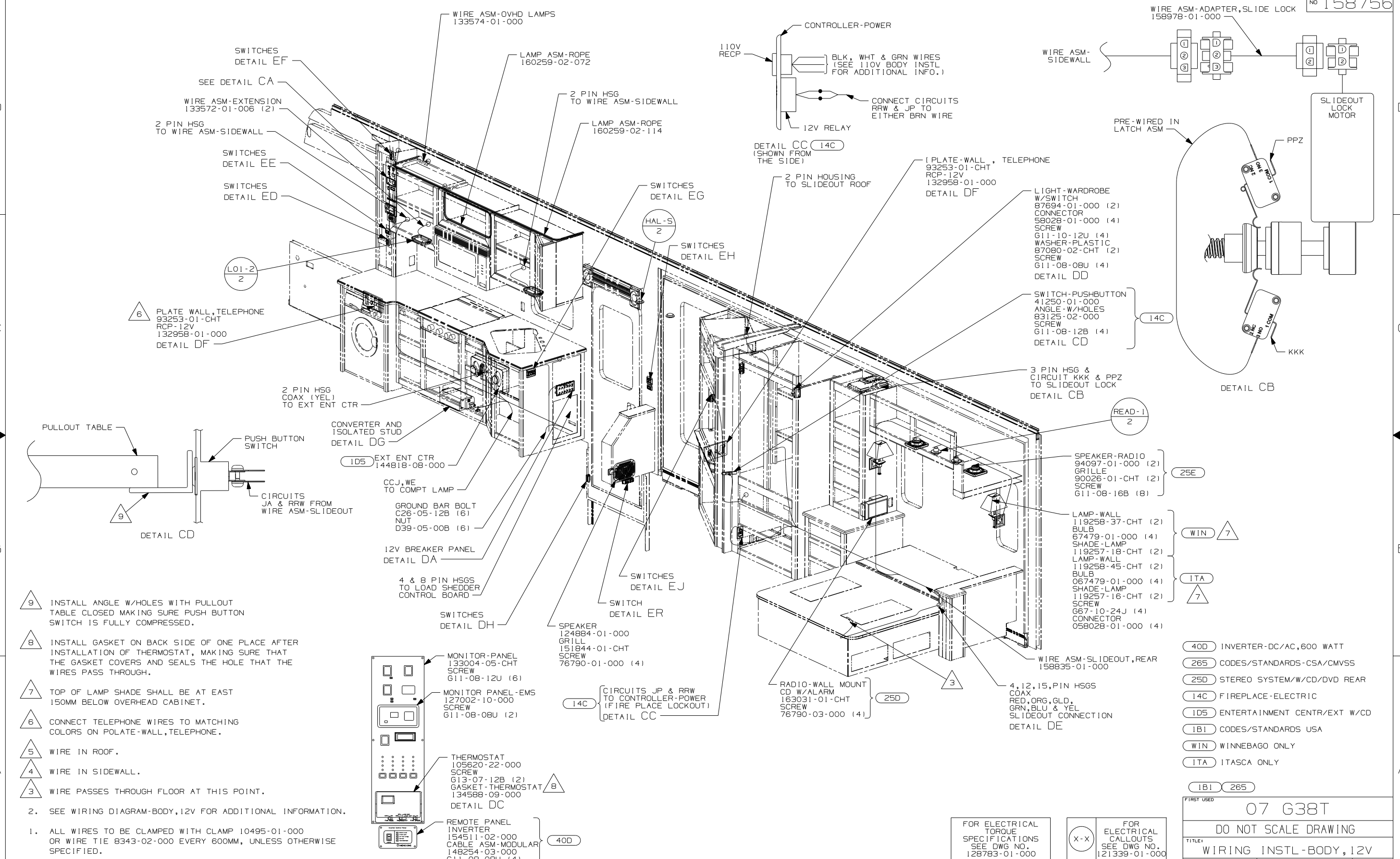
- (ITA) ITASCA ONLY
- (21L) DINING TABLE/CHAIRS
- (29H) A/C CENTRAL HEAT PUMP
- (29C) A/C CENTRAL
- (265) CODES/STANDARDS-CSA/CMVSS
- (1B1) CODES/STANDARDS USA

- NOTES:
1. ALL WIRES TO BE SECURED WITH CLAMP 10495 OR 10497 OR WIRE TIE 8343 OR 108046 EVERY 600mm, USE SCREW 667-XX-XXX OR G56-XX-XXX AS APPROPRIATE FOR INSTALLATION.
  2. SEE WIRING DIAGRAM-BODY, 12V FOR ADDITIONAL INFORMATION.
- △ 6 CONNECT TELEPHONE WIRES TO MATCHING COLORS ON PLAT-WALL, TELEPHONE.
- △ 5 WIRE IN ROOF.
- △ 4 WIRE IN SIDEWALL.
- △ 3 WIRE PASSES THROUGH FLOOR AT THIS POINT.

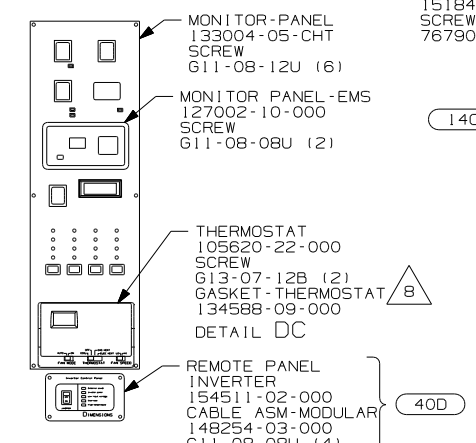
FOR ELECTRICAL TORQUE SPECIFICATIONS SEE DWG NO. 128783-01-000

(X-X) FOR ELECTRICAL CALLOUTS SEE DWG NO. 121339-01-000

FIRST USED	07 G38T
TITLE	DO NOT SCALE DRAWING
TITLE	WIRING INSTL-BODY, 12V
SHEET 2	PART NO 158756 REV



- NOTES:
1. ALL WIRES TO BE CLAMPED WITH CLAMP 10495-01-000 OR WIRE TIE 8343-02-000 EVERY 600MM, UNLESS OTHERWISE SPECIFIED.
  2. SEE WIRING DIAGRAM-BODY, 12V FOR ADDITIONAL INFORMATION.
- 9 INSTALL ANGLE W/HOLES WITH PULLOUT TABLE CLOSED MAKING SURE PUSH BUTTON SWITCH IS FULLY COMPRESSED.
- 8 INSTALL GASKET ON BACK SIDE OF ONE PLACE AFTER INSTALLATION OF THERMOSTAT, MAKING SURE THAT THE GASKET COVERS AND SEALS THE HOLE THAT THE WIRES PASS THROUGH.
- 7 TOP OF LAMP SHADE SHALL BE AT EAST 150MM BELOW OVERHEAD CABINET.
- 6 CONNECT TELEPHONE WIRES TO MATCHING COLORS ON POLATE-WALL, TELEPHONE.
- 5 WIRE IN ROOF.
- 4 WIRE IN SIDEWALL.
- 3 WIRE PASSES THROUGH FLOOR AT THIS POINT.

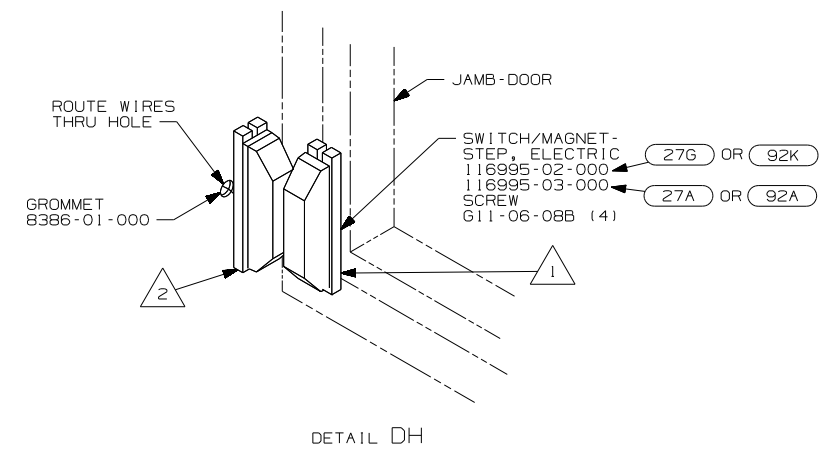
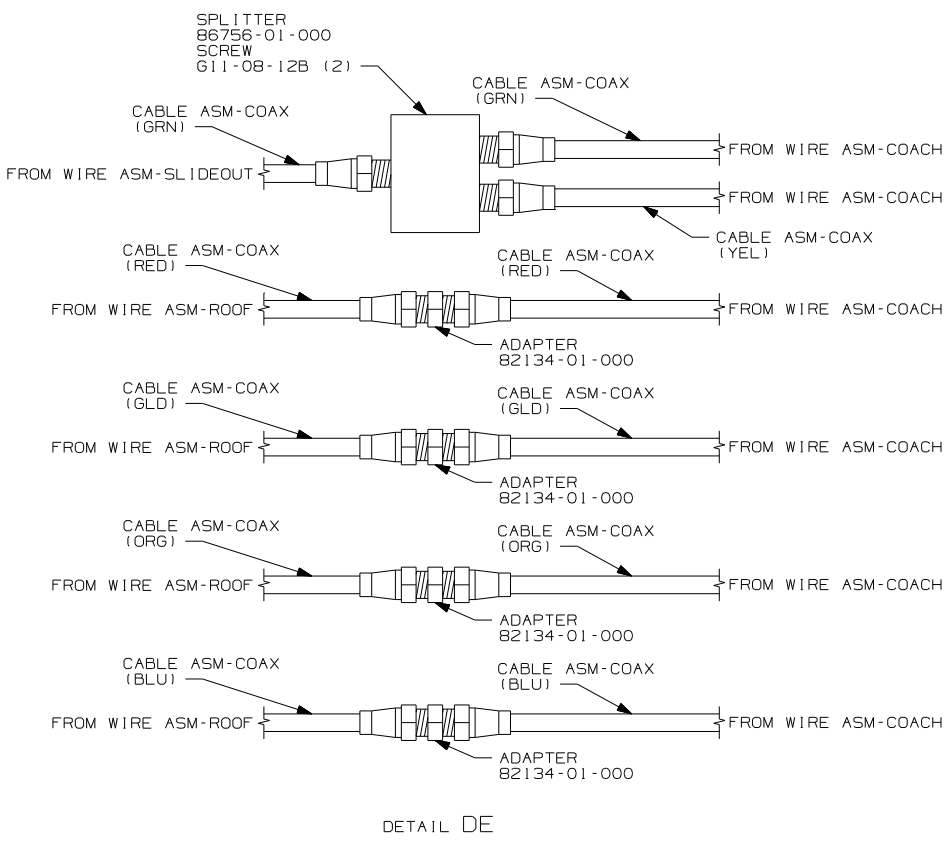
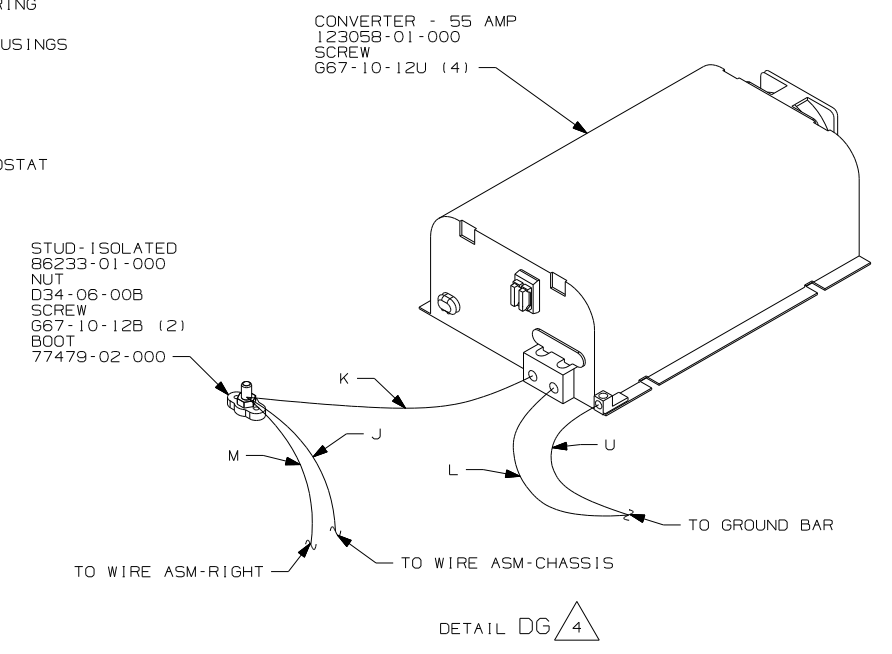
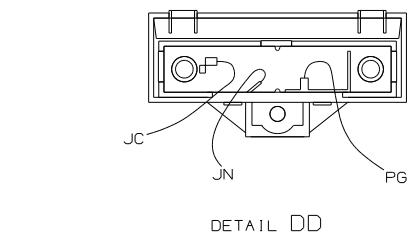
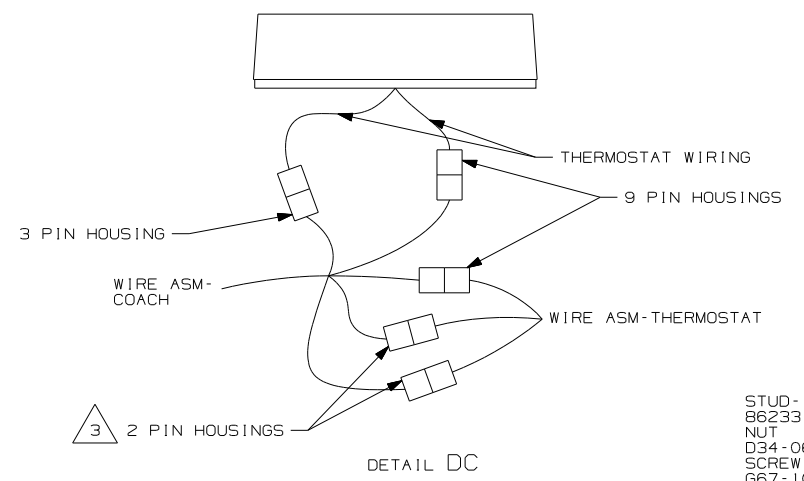
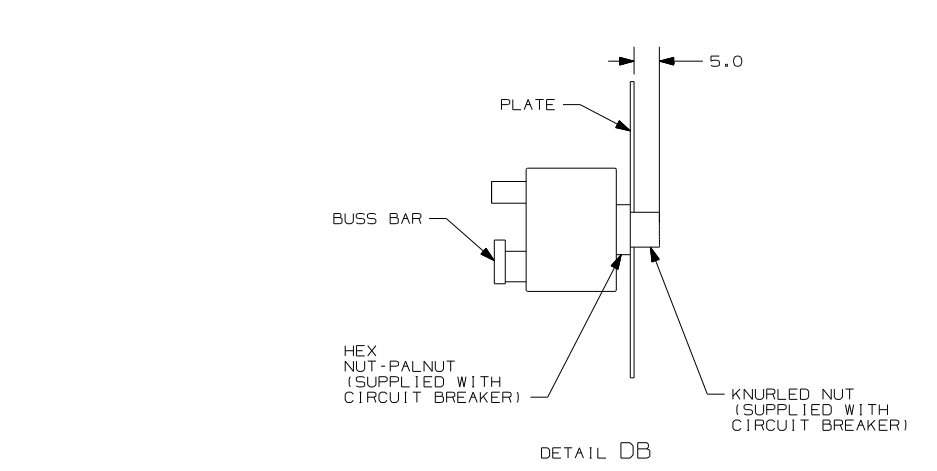
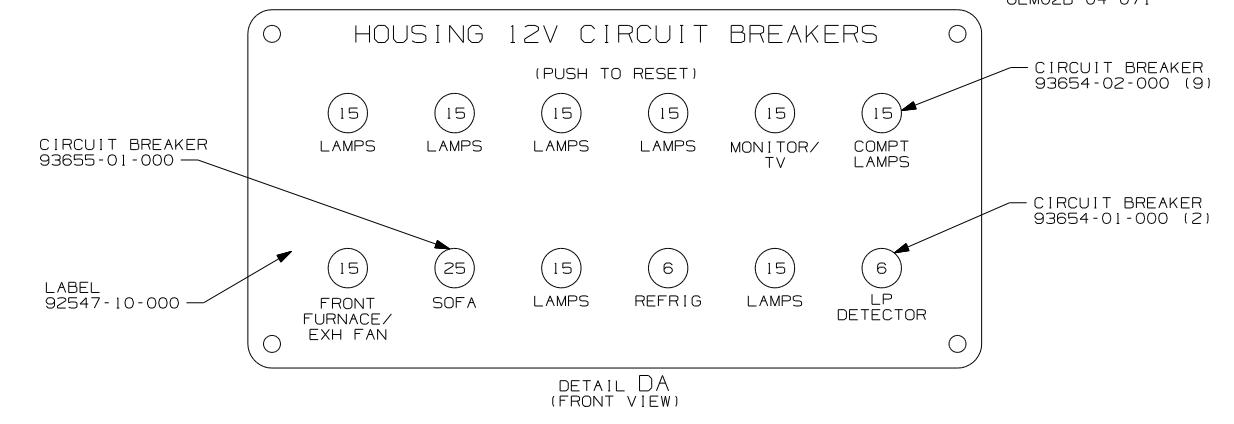
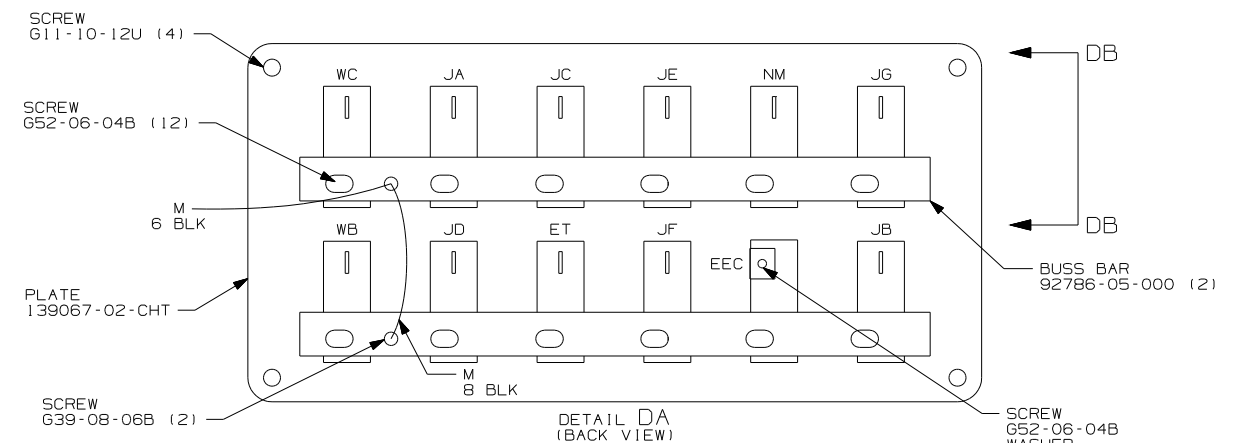


FOR ELECTRICAL TORQUE SPECIFICATIONS SEE DWG NO. 128783-01-000

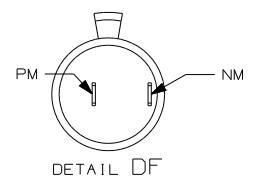
X-X FOR ELECTRICAL CALLOUTS SEE DWG NO. 121339-01-000

- 40D INVERTER-DC/AC, 600 WATT
- 265 CODES/STANDARDS-CSA/CMVSS
- 25D STEREO SYSTEM/W/CD/DVD REAR
- 14C FIREPLACE-ELECTRIC
- 105 ENTERTAINMENT CENTR/EXT W/CD
- 1B1 CODES/STANDARDS USA
- WIN WINNEBAGO ONLY
- ITA ITASCA ONLY

FIRST USED	07 G38T
TITLE:	DO NOT SCALE DRAWING
	WIRING INSTL-BODY, 12V
SHEET 3	PART NO 158756 REV



- NOTES:
- 4 FOR POSITIONING DIMENSIONS SEE WIRING INSTL-BODY, 110V SHT 4.
  - 3 WITHOUT (29H) PLUG THE TWO PIN HOUSINGS TOGETHER ON WIRE ASM-THERMOSTAT.
  - 2 MOUNT SWITCH AND SPACER TO BLOCK ON JAMB ADJUST HEIGHT TO MATCH MAGNET.
  - 1 MOUNT MAGNET USING PILOT HOLES IN SCREEN DOOR FRAME. MOUNT WITH MAGNET TOWARD SWITCH.

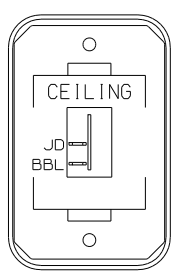


FOR ELECTRICAL TORQUE SPECIFICATIONS SEE DWG NO. 128783-01-000

FOR ELECTRICAL CALLOUTS SEE DWG NO. 121339-01-000

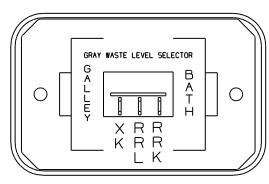
- (92K) EXTERIOR GRAPHICS PACKAGE #2
- (92A) EXT FULL BODY PAINT PKG # 2
- (29H) A/C CENTRAL\_HEAT PUMP
- (276) EXTERIOR GRAPHICS PACKAGE #1
- (27A) EXT FULL BODY PAINT PKG #1
- (265) CODES/STANDARDS-CSA/CMVSS
- (1B1) CODES/STANDARDS USA

FIRST USED	07 G38T	
TITLE:	DO NOT SCALE DRAWING	
	WIRING INSTL-BODY, 12V	
SHEET 4	PART NO	REV
	158756	



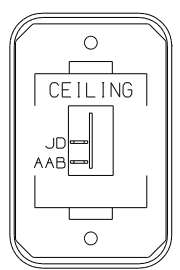
SWITCH-ROCKER  
135740-01-CHT  
SWITCH-BASE  
135741-01-CHT  
SWITCH-BEZEL  
135742-07-CHT  
SCREW  
G11-08-08U (2)

DETAIL EA



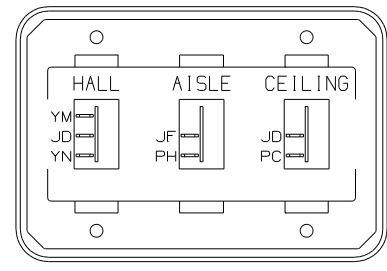
SWITCH-ROCKER  
135740-02-CHT  
SWITCH-BASE  
135741-02-CHT  
SWITCH-BEZEL  
135742-52-CHT  
SCREW  
G11-08-08U (2)

DETAIL EE



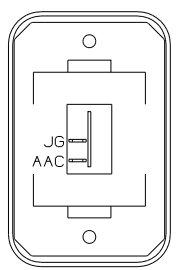
SWITCH-ROCKER  
135740-01-CHT  
SWITCH-BASE  
135741-01-CHT  
SWITCH-BEZEL  
135742-07-CHT  
SCREW  
G11-08-08U (2)

DETAIL EJ



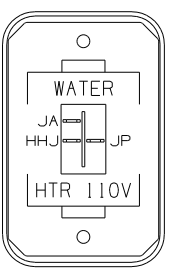
SWITCH-ROCKER  
135740-01-CHT (2)  
135740-02-CHT  
SWITCH-BASE  
135741-03-CHT  
SWITCH-BEZEL  
135742-25-CHT  
SCREW  
G11-08-08U (4)

DETAIL EN



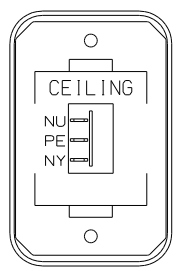
SWITCH-ROCKER  
135740-01-CHT  
SWITCH-BASE  
135741-01-CHT  
SWITCH-BEZEL  
135742-01-CHT  
SCREW  
G11-08-08U (2)

DETAIL EB



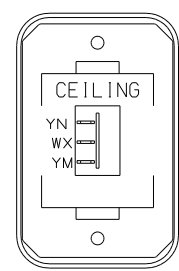
SWITCH-ROCKER  
135740-06-CHT  
SWITCH-BASE  
135741-01-CHT  
SWITCH-BEZEL  
135742-35-CHT  
SCREW  
G11-08-08U (2)

DETAIL EF



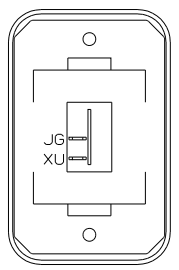
SWITCH-ROCKER  
135740-02-CHT  
SWITCH-BASE  
135741-01-CHT  
SWITCH-BEZEL  
135742-07-CHT  
SCREW  
G11-08-08U (2)

DETAIL EK



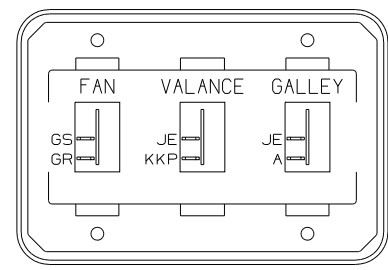
SWITCH-ROCKER  
135740-02-CHT  
SWITCH-BASE  
135741-01-CHT  
SWITCH-BEZEL  
135742-07-CHT  
SCREW  
G11-08-08U (2)

DETAIL EP



SWITCH-ROCKER  
135740-01-CHT  
SWITCH-BASE  
135741-01-CHT  
SWITCH-BEZEL  
135742-01-CHT  
SCREW  
G11-08-08U (2)

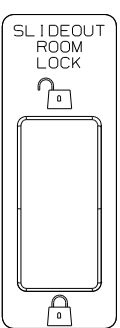
DETAIL EC



SWITCH-ROCKER  
135740-01-CHT (3)  
SWITCH-BASE  
135741-03-CHT  
SWITCH-BEZEL  
135742-41-CHT  
SCREW  
G11-08-08U (4)

DETAIL EG

CIRCUITS  
PPP, PPV,  
PPR, PPR,  
PPU, PPP,  
SSB

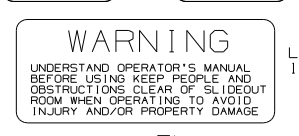


SLIDEOUT  
ROOM  
LOCK

SLIDEOUT  
CONTROL  
SWITCH

CIRCUITS  
DDA, CCY,  
DDA, BBM,  
PPX, BBN

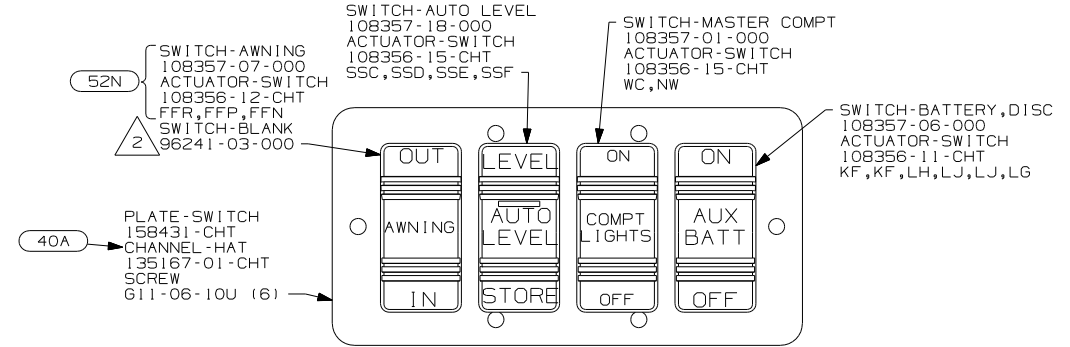
PLATE-SWITCH  
144363-09-CHT (2)  
SWITCH  
108357-06-000 (2)  
ACTUATOR  
108356-01-CHT (2)  
NUT  
D65-08-00B (4)  
LABEL  
116220-01-000  
116220-02-000



WARNING

LABEL-WARNING  
116549-02-000

DETAIL EL



SWITCH-AWNING  
108357-07-000  
ACTUATOR-SWITCH  
108356-12-CHT  
FPR, FFP, FFN  
SWITCH-BLANK  
96241-03-000

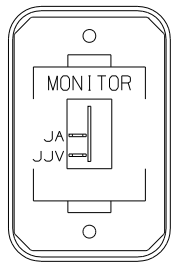
SWITCH-AUTO LEVEL  
108357-18-000  
ACTUATOR-SWITCH  
108356-15-CHT  
SSC, SSD, SSE, SSF

SWITCH-MASTER COMPT  
108357-01-000  
ACTUATOR-SWITCH  
108356-15-CHT  
WC, NW

PLATE-SWITCH  
158431-CHT  
CHANNEL-HAT  
135167-01-CHT  
SCREW  
G11-06-10U (6)

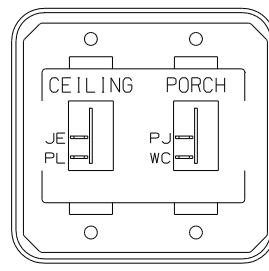
SWITCH-BATTERY, DISC  
108357-06-000  
ACTUATOR-SWITCH  
108356-11-CHT  
KF, KF, LH, LJ, LJ, LG

DETAIL ER



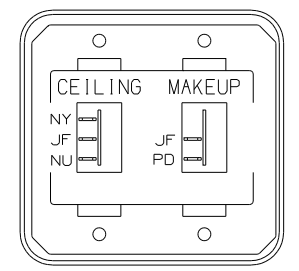
SWITCH-ROCKER  
135740-01-CHT  
SWITCH-BASE  
135741-01-CHT  
SWITCH-BEZEL  
135742-30-CHT  
SCREW  
G11-08-08U (2)

DETAIL ED



SWITCH-ROCKER  
135740-01-CHT (2)  
SWITCH-BASE  
135741-02-CHT  
SWITCH-BEZEL  
135742-19-CHT  
SCREW  
G11-08-08U (4)

DETAIL EH



SWITCH-ROCKER  
135740-01-CHT  
135740-02-CHT  
SWITCH-BASE  
135741-02-CHT  
SWITCH-BEZEL  
135742-14-CHT  
SCREW  
G11-08-08U (4)

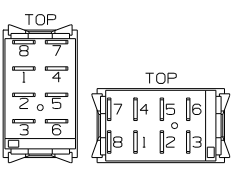
DETAIL EM

SWITCH-PUMP  
108357-15-000  
ACTUATOR  
108356-03-CHT  
JY, AG, JA, AF, JS

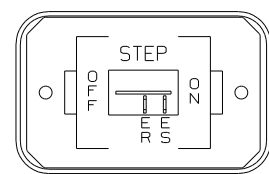
SWITCH-SERVICE LAMP  
108357-01-000  
ACTUATOR  
108356-02-CHT  
WC, WA

SWITCH-AUTO LEVEL  
108357-03-000  
ACTUATOR  
108356-03-CHT  
SSC, SSD, SSE, SSF

DETAIL ES

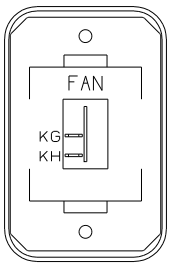


DETAIL EP



SWITCH-ROCKER  
135740-01-CHT  
SWITCH-BASE  
135741-01-CHT  
SWITCH-BEZEL  
135742-11-CHT  
SCREW  
G11-08-08U (2)

DETAIL EH



SWITCH-ROCKER  
135740-01-CHT  
SWITCH-BASE  
135741-01-CHT  
SWITCH-BEZEL  
135742-12-CHT  
SCREW  
G11-08-08U (2)

DETAIL EM

3 FOR SWITCH ORIENTATION SEE DETAIL EP.  
2 WITHOUT 52N

1. SWITCHES ARE TO BE INSTALLED AS SHOWN ON THIS DRAWING.

NOTES:

FOR ELECTRICAL  
TORQUE  
SPECIFICATIONS  
SEE DWG NO.  
128783-01-000

X-X FOR  
ELECTRICAL  
CALLOUTS  
SEE DWG NO.  
121339-01-000

- 52N AWNING - PATIO, ELECTRIC
- 40A INVERTER-DC/AC WITHOUT
- 265 CODES/STANDARDS-CSA/CMVSS
- 1B1 CODES/STANDARDS USA

FIRST USED	07 G38T
TITLE:	DO NOT SCALE DRAWING
WIRING INSTL-BODY, 12V	
SHEET 5	PART NO 158756 REV

LIGHT-HALOGEN, ADJUSTABLE  
146048-01-CHT (2)  
SCREW  
G11-06-10J (2)

SPEAKER-ROUND, CEILING  
160867-01-CHT (2)  
SCREW  
G1208-12-170 (8)

SATELLITE  
ELEVATION  
SENSOR  
DETAIL GE

FLUNS  
4

LFSN2  
3

SWITCH-PUSHBUTTON  
41250-01-000 (7)  
BRACKET-SWITCH, LIGHT  
138494-01-CHT (7)  
SCREW  
G39-08-12T (14)  
G55-08-12B (14)  
SCREW COVER  
93249-01-000 (28)

LF1N2  
7

WASHER-PLASTIC  
87080-02-CHT (5)  
SCREW  
G11-08-08B (10)

LSH-1

HAL  
2

LAMP  
86280-01-000  
SCREW  
G67-10-12U (4)  
CONNECTOR  
58028-01-000 (2)

265 CODES/STANDARDS-CSA/CMVSS

1B1 CODES/STANDARDS USA

1B1 265

FIRST USED  
07 G38T

DO NOT SCALE DRAWING

TITLE:  
WIRING INSTL-BODY, 12V

SHEET 6 PART NO 158756 REV

FOR ELECTRICAL  
TORQUE  
SPECIFICATIONS  
SEE DWG NO.  
128783-01-000

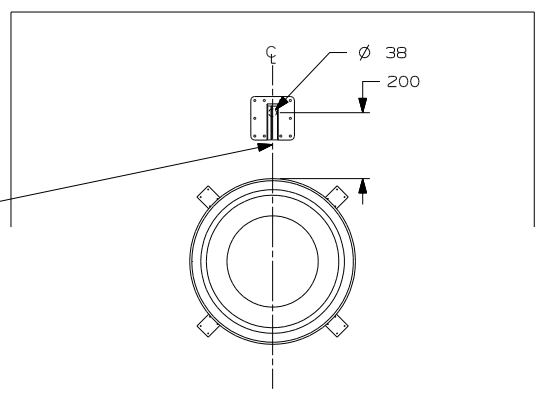
(X-X)

FOR  
ELECTRICAL  
CALLOUTS  
SEE DWG NO.  
121339-01-000

- 4 LAMP LOCATED IN POWER CORD COMPARTMENT.
- 3 LAMP LOCATED IN WATER HEATER COMPARTMENT.
- 2 LAMP LOCATED IN SERVICE COMPARTMENT.
- 1 LAMPS LOCATED IN SLIDEOUT.

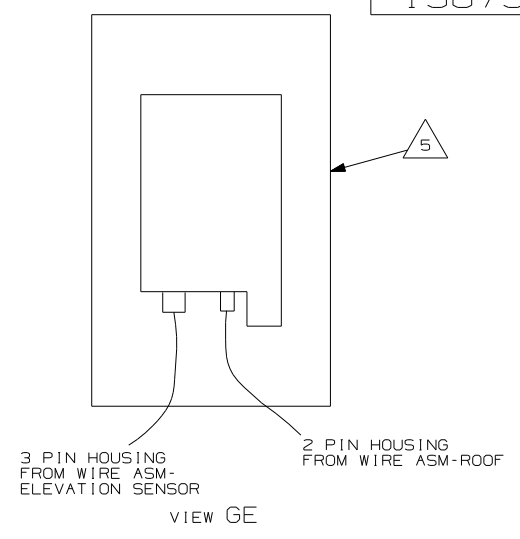
NOTES:

THE SATELLITE DISH WIRE CONNECTIONS ARE TO BE PLACED ON THE CENTERLINE OF THE MOTORHOME FACING FORWARD

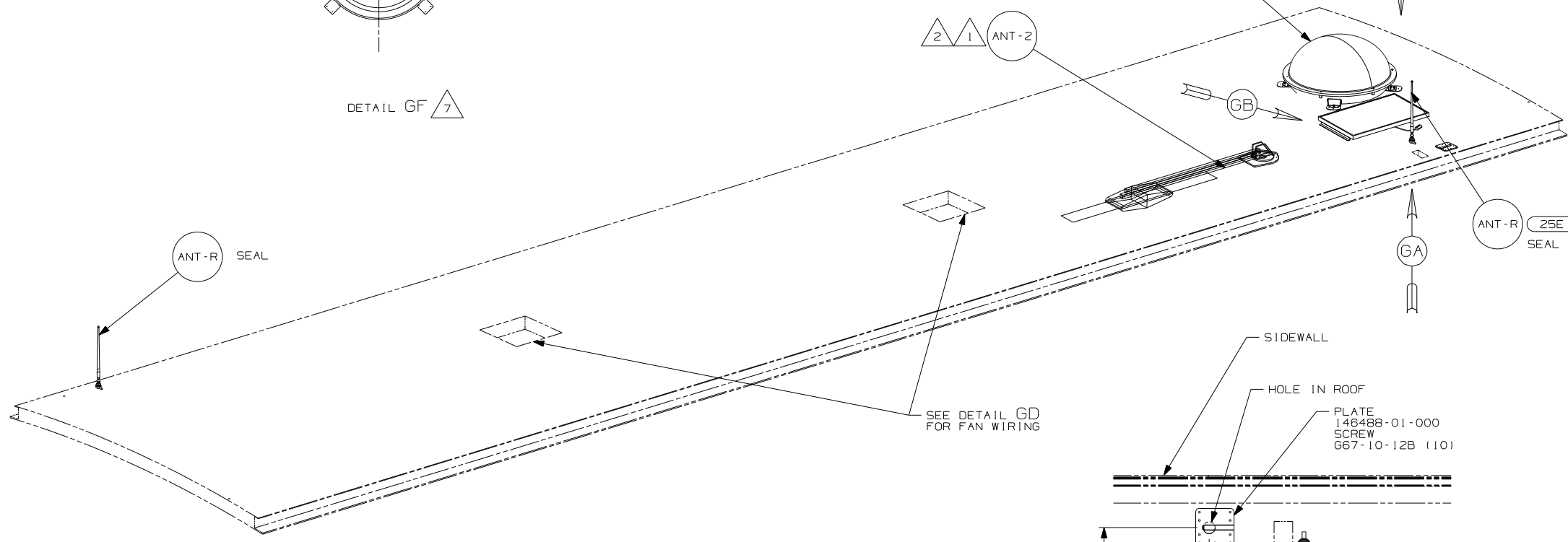


DETAIL GF 7

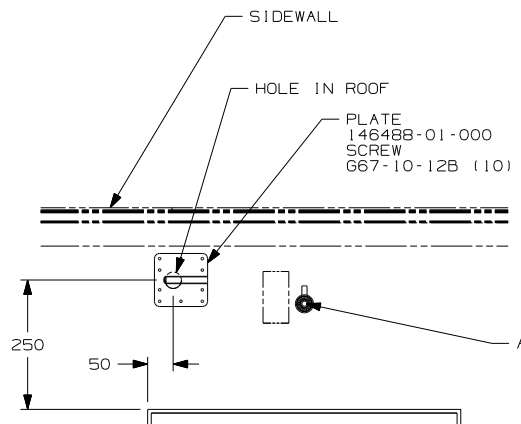
- 78K DA-1 DETAIL GF
- 48R DI-1 DETAIL GF
- 48Q DM-1 DETAIL GE



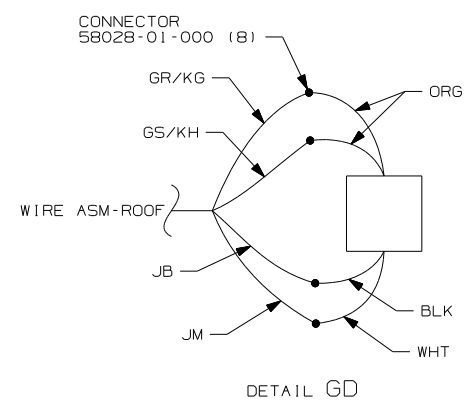
VIEW GE



SEE DETAIL GD FOR FAN WIRING

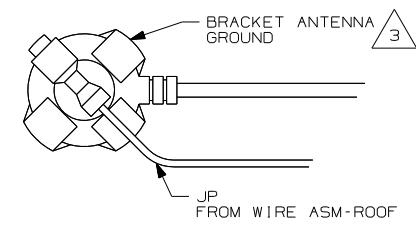


VIEW GC



DETAIL GD

- NOTES:
- 7 REMOVE ALL SHIPPING RESTRAINTS AND FIRMLY INSERT THE SUPPLIED PLUGS INTO THE APPROPRIATE SIZED HOLES AS SPECIFIED IN THE INSTALLATION PROCESS.
  - 6 MOUNT GPS ANTENNA AS FAR TO THE REAR OF THE SATELLITE AS POSSIBLE. SECURE CABLE WITH ROOF SEALANT.
  - 5 SENSOR SUPPLIED WITH SATELLITE ASSEMBLY.
  - 4 FASTEN TO VENT.
  - 3 WRAP BRACKET LEGS AROUND ANTENNA BASE.
  - 2 ADD RUBBER BUMPERS TO ROOF UNDER EACH END OF ANTENNA TO PREVENT CONTACT WITH THE ROOF.
  - 1 SEE DWG 76319-01-000 FRO INSTALLATION OF TV ANTENNA.



VIEW GA

- 78K SATELLITE DISH-AUTOMATIC
- 48R SAT SYS IN-MOTION W/O RCVR
- 48Q SATELLITE DISH & ELEV.SENSOR
- 265 CODES/STANDARDS-CSA/CMVSS
- 25E STEREO SYSTEM W/CD REAR
- 1B1 CODES/STANDARDS USA

1B1 265

FOR ELECTRICAL TORQUE SPECIFICATIONS SEE DWG NO. 128783-01-000

FOR ELECTRICAL CALLOUTS SEE DWG NO. 121339-01-000

FIRST USED		07 G38T	
DO NOT SCALE DRAWING			
TITLE: WIRING INSTL-BODY, 12V			
SHEET 7	PART NO	158756	REV