



DANGER

Danger of electrical shock, burns or death. Always remove all power sources before attempting any repair, service or diagnostic work. Power can be present from shore power, generator, inverter or battery. All power sources must be disabled and secured before performing any service.

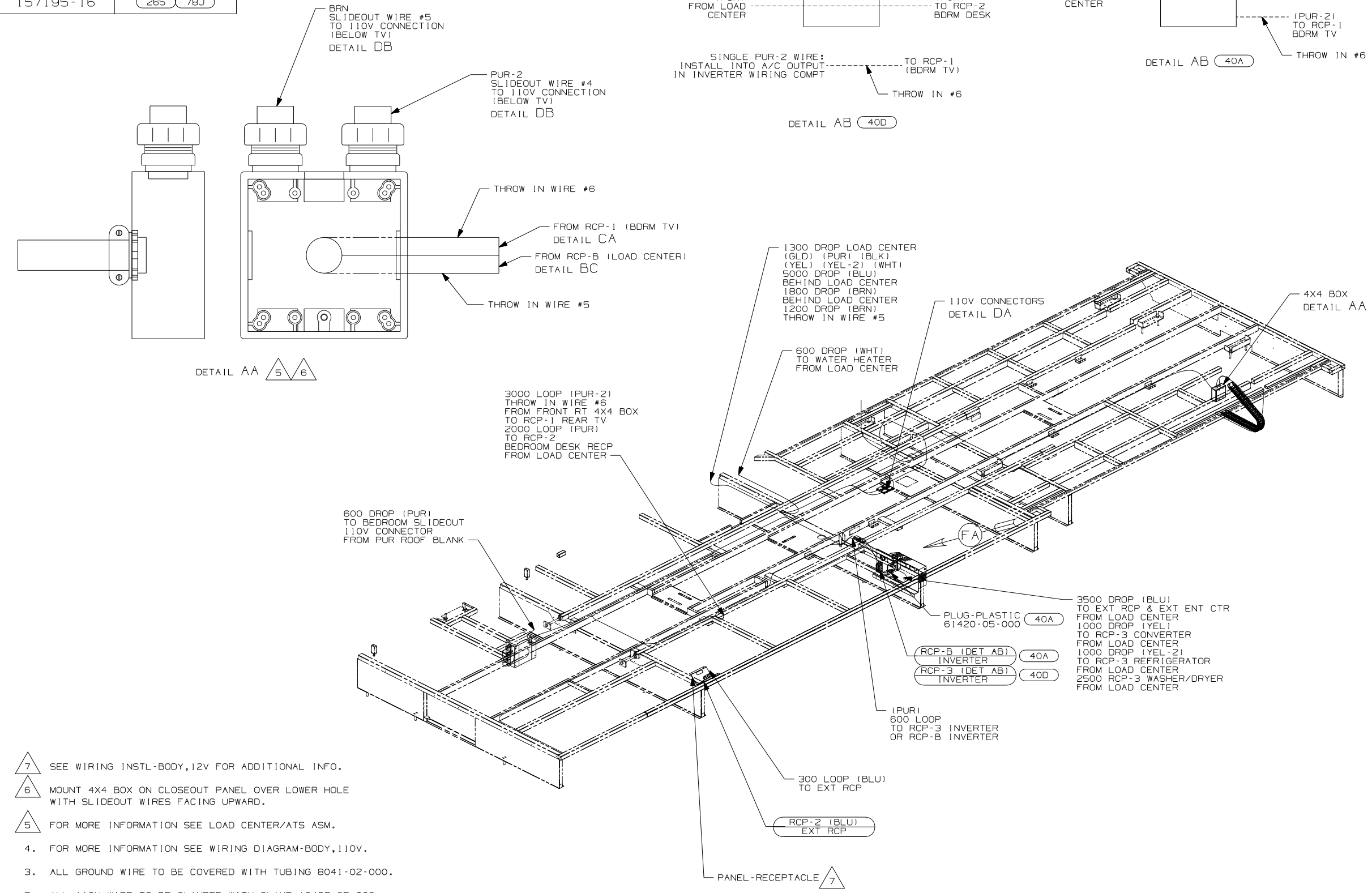


CAUTION

If you lack the skills, tools or equipment to perform diagnostic or repair work leave such work to an authorized Winnebago Industries dealer or other qualified shop.

DRAWING NO.	FEATURES
157195-12	(1B1) (78J)
157195-16	(265) (78J)

RELEASE	REV/DATE	DWG NO	157195
REV ZONE	REVISION RECORD	DATE	DTR-0R16



- NOTES:
- ALL WIRES TO BE SECURED WITH CLAMP 10495-01-000 OR CLIP 80734-01-000 EVERY 600MM. USE SCREW G67-10-12B UNLESS OTHERWISE SPECIFIED.
 - ALL 110V WIRE TO BE CLAMPED WITH CLAMP 10497-05-000 WITHIN 200MM OF OUTLET BOXES, USE SCREW G67-10-12B.
 - ALL GROUND WIRE TO BE COVERED WITH TUBING 8041-02-000.
 - FOR MORE INFORMATION SEE WIRING DIAGRAM-BODY,110V.
 - FOR MORE INFORMATION SEE LOAD CENTER/ATS ASM.
 - MOUNT 4X4 BOX ON CLOSEOUT PANEL OVER LOWER HOLE WITH SLIDEOUT WIRES FACING UPWARD.
 - SEE WIRING INSTL-BODY,12V FOR ADDITIONAL INFO.

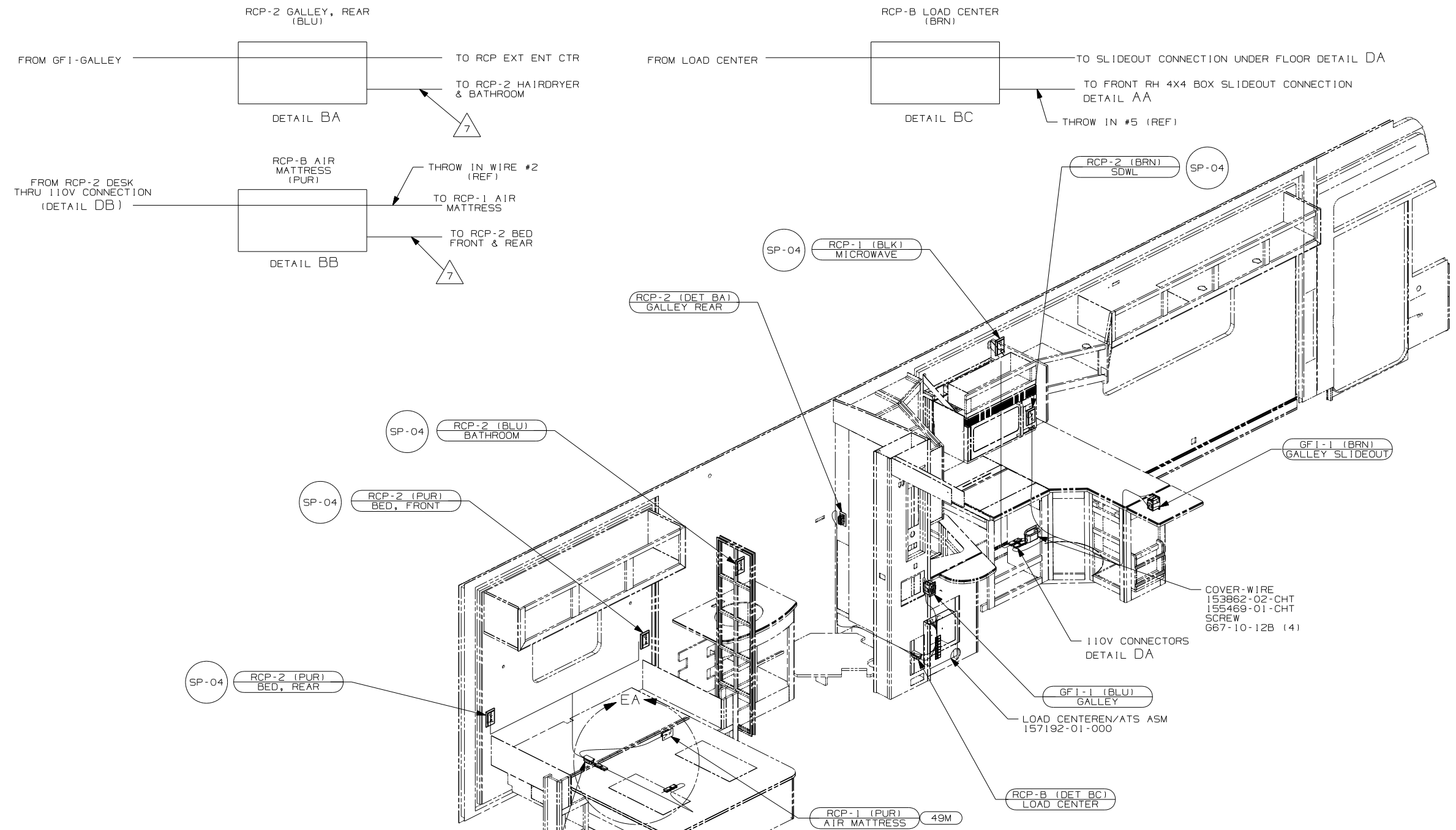
- (40A) INVERTER-DC/AC WITHOUT
- (40D) INVERTER-DC/AC,400 WATT
- (265) CODES/STANDARDS - CSA/CMVSS
- (1B1) CODES/STANDARDS - USA
- (1B1) (265)

WINNEBAGO		COPYRIGHT 2006 WINNEBAGO INDUSTRIES, INC.	
DTR	ORIG. DATE	ALL DIMENSIONS ARE IN MILLIMETERS	
CHKR		FIRST USED	
P.E.		07 G38J	
M.E.		UNSPECIFIED TOLERANCES ARE:	
DSNR		MATERIAL:	
		WHOLE DIM (X)	: 3
		ONE-PLACE (X,X)	: 1.5
		TWO-PLACE (X,XX)	: 0.50
		ANGLE	: 1°
		THIRD ANGLE PROJECTION	

FOR ELECTRICAL TORQUE SPECIFICATIONS SEE DWG NO. 128783-01-000

(X-X) FOR ELECTRICAL CALLOUTS SEE DWG NO. 121339-01-000

DO NOT SCALE DRAWING			
TITLE: WIRING INSTL-BODY,110V			
SHEET 1 OF 6	PART NO	157195	REV
REF:	1 6/16/2006		



- 8 WIRE IN ROOF.
- 7 WIRE IN SIDEWALL.
- 6 WIRE ROUTED THROUGH FLOOR AT THIS POINT.
- 5 FOR MORE INFORMATION SEE LOAD CENTER/ATS ASM.

4. FOR MORE INFORMATION SEE WIRING DIAGRAM-BODY, 110V.
3. ALL GROUND WIRE TO BE COVERED WITH TUBING 8041-02-000.
2. ALL 110V WIRE TO BE CLAMPED WITH CLAMP 10497-05-000 WITHIN 200MM OF OUTLET BOXES, USE SCREW G67-10-12B.
1. ALL WIRES TO BE SECURED WITH CLAMP 10495-01-000 OR CLIP 80734-01-000 EVERY 600MM. USE SCREW G67-10-12B UNLESS OTHERWISE SPECIFIED.

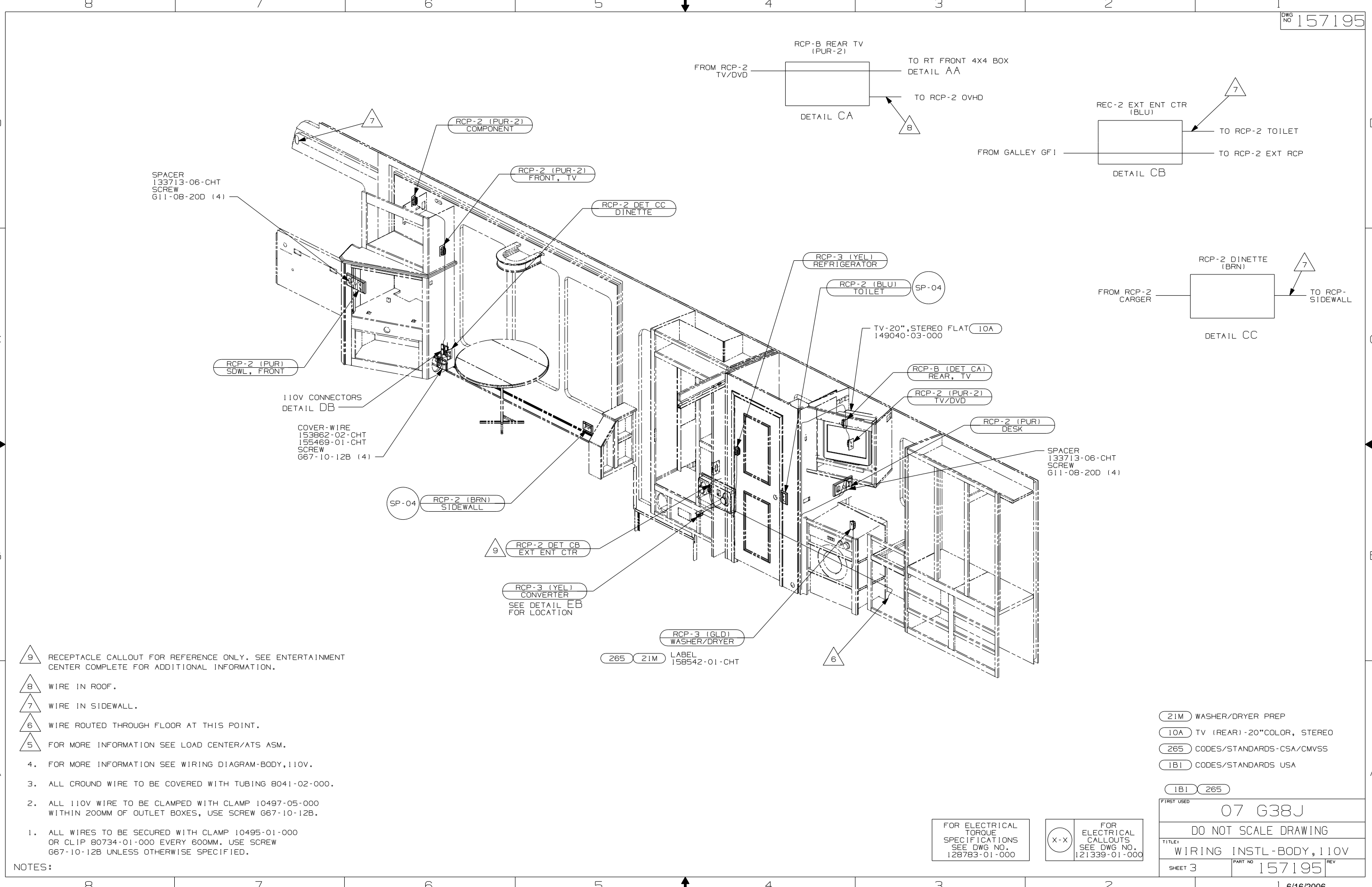
NOTES:

- 49M SLEEP NUMBER BED-QUEEN SIZE
- 1B1 CODES/STANDARDS - USA
- 1B1 265

FOR ELECTRICAL TORQUE SPECIFICATIONS SEE DWG NO. 128783-01-000

FOR ELECTRICAL CALLOUTS SEE DWG NO. 121339-01-000

FIRST USED	07 G38J
TITLE	DO NOT SCALE DRAWING
TITLE	WIRING INSTL-BODY, 110V
SHEET 2	PART NO 157195 REV



SPACER
133713-06-CHT
SCREW
G11-08-20D (4)

RCP-2 (PUR)
SDWL, FRONT

110V CONNECTORS
DETAIL DB

COVER-WIRE
153862-02-CHT
155469-01-CHT
SCREW
G67-10-12B (4)

SP-04 RCP-2 (BRN)
SIDEWALL

9 RCP-2 DET CB
EXT ENT CTR

RCP-3 (YEL)
CONVERTER
SEE DETAIL EB
FOR LOCATION

RCP-3 (GLD)
WASHER/DRYER
265 21M
LABEL
158542-01-CHT

RCP-B REAR TV
(PUR-2)
FROM RCP-2
TV/DVD
TO RT FRONT 4X4 BOX
DETAIL AA
TO RCP-2 OVHD
DETAIL CA

RCP-3 (YEL)
REFRIGERATOR

RCP-2 (BLU)
TOILET SP-04

TV-20", STEREO FLAT 10A
149040-03-000

RCP-B (DET CA)
REAR, TV

RCP-2 (PUR-2)
TV/DVD

RCP-2 (PUR)
DESK

SPACER
133713-06-CHT
SCREW
G11-08-20D (4)

REC-2 EXT ENT CTR
(BLU)
FROM GALLEY GF1
TO RCP-2 TOILET
TO RCP-2 EXT RCP
DETAIL CB

RCP-2 DINETTE
(BRN)
FROM RCP-2
CARGER
TO RCP-
SIDEWALL
DETAIL CC

9 RECEPTACLE CALLOUT FOR REFERENCE ONLY. SEE ENTERTAINMENT CENTER COMPLETE FOR ADDITIONAL INFORMATION.

8 WIRE IN ROOF.

7 WIRE IN SIDEWALL.

6 WIRE ROUTED THROUGH FLOOR AT THIS POINT.

5 FOR MORE INFORMATION SEE LOAD CENTER/ATS ASM.

4. FOR MORE INFORMATION SEE WIRING DIAGRAM-BODY,110V.

3. ALL GROUND WIRE TO BE COVERED WITH TUBING 8041-02-000.

2. ALL 110V WIRE TO BE CLAMPED WITH CLAMP 10497-05-000 WITHIN 200MM OF OUTLET BOXES, USE SCREW G67-10-12B.

1. ALL WIRES TO BE SECURED WITH CLAMP 10495-01-000 OR CLIP 80734-01-000 EVERY 600MM. USE SCREW G67-10-12B UNLESS OTHERWISE SPECIFIED.

NOTES:

FOR ELECTRICAL
TORQUE
SPECIFICATIONS
SEE DWG NO.
128783-01-000

(X-X)
FOR
ELECTRICAL
CALLOUTS
SEE DWG NO.
121339-01-000

21M WASHER/DRYER PREP
10A TV (REAR)-20"COLOR, STEREO
265 CODES/STANDARDS-CSA/CMVSS
1B1 CODES/STANDARDS USA

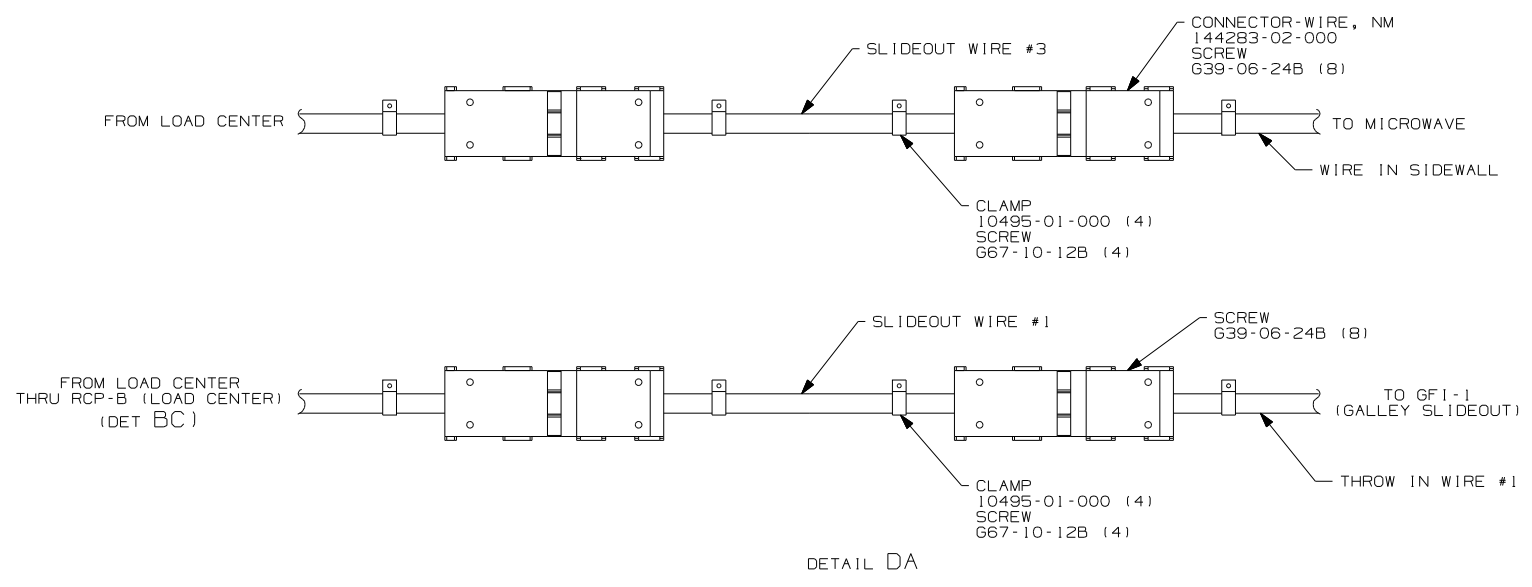
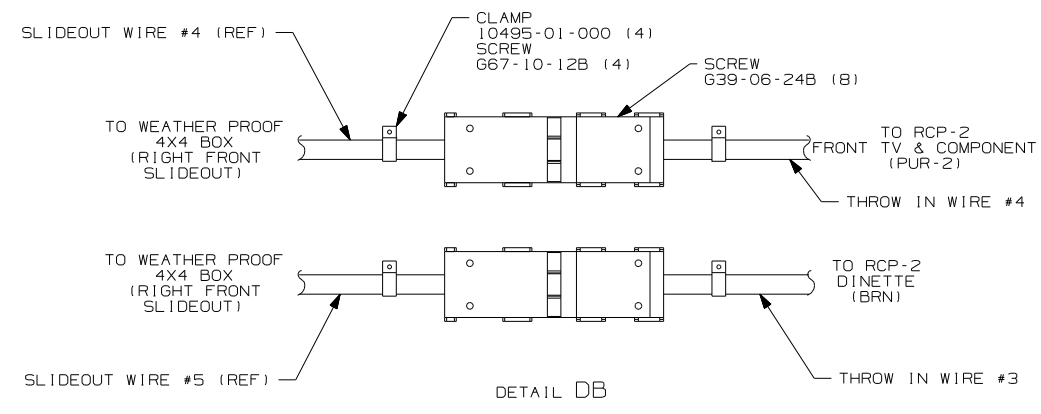
1B1 265

FIRST USED
07 G38J

DO NOT SCALE DRAWING

TITLE:
WIRING INSTL-BODY, 110V

SHEET 3 PART NO 157195 REV



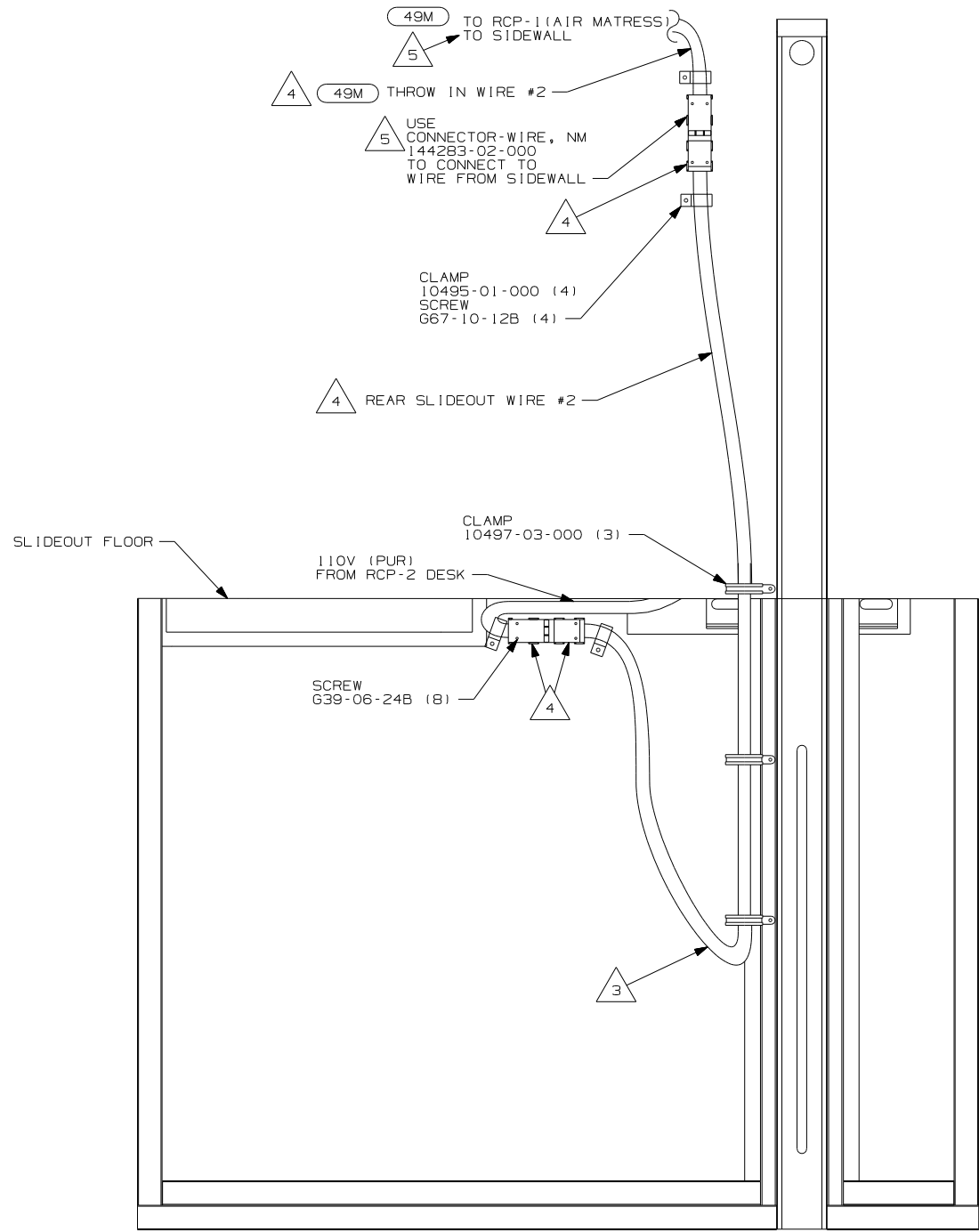
- (78J) ELECTRICAL SYTEM - 50 AMP
- (265) CODES/STANDARDS - CSA/CMVSS
- (1B1) CODES/STANDARDS - USA

(1B1) (265) (78J)

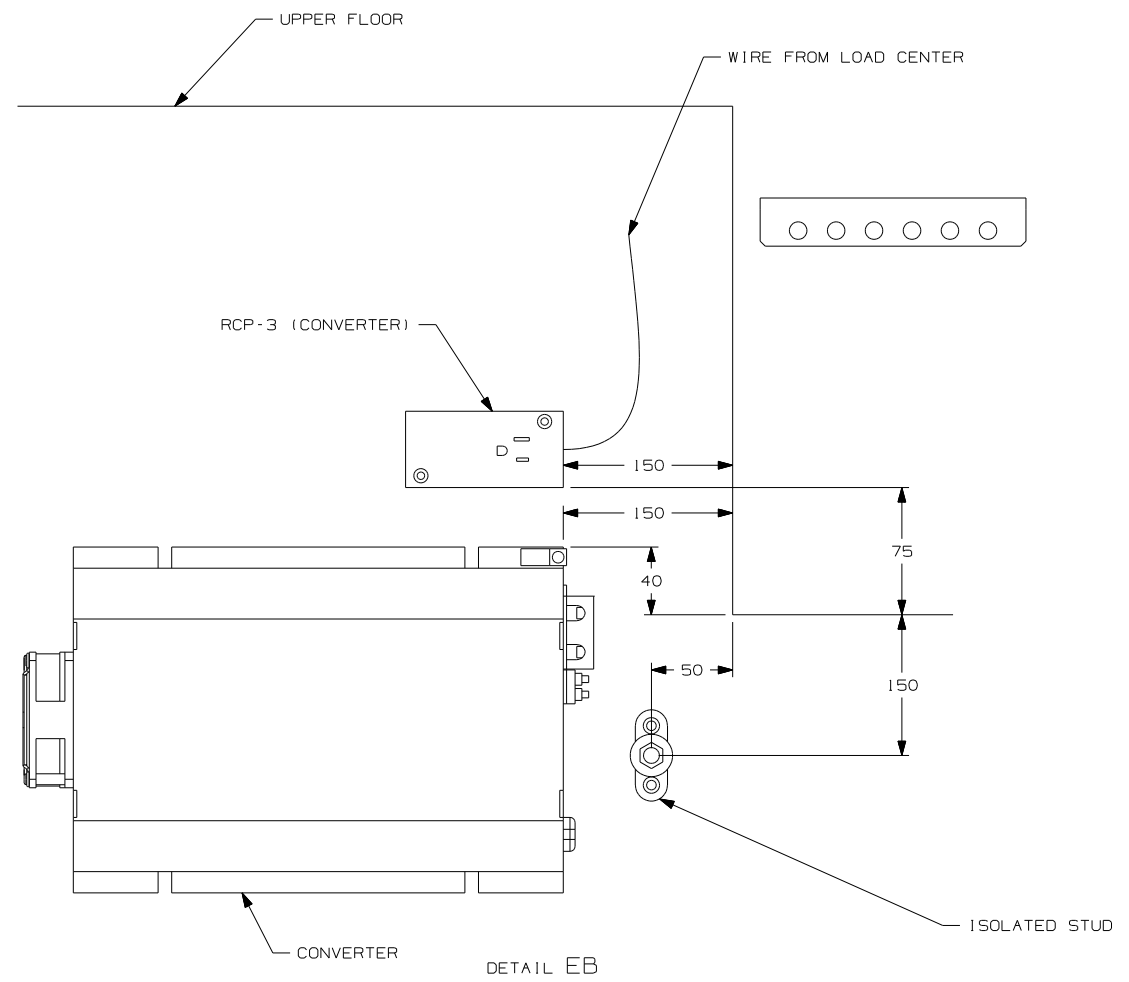
FIRST USED	07 G38J
TITLE	DO NOT SCALE DRAWING
	WIRING INSTL-BODY, 110V
SHEET 4	PART NO 157195 REV

FOR ELECTRICAL TORQUE SPECIFICATIONS SEE DWG NO. 128783-01-000

(X-X) FOR ELECTRICAL CALLOUTS SEE DWG NO. 121339-01-000



DETAIL EA 4



DETAIL EB

- 5 WITH OUT 49M
- 4 FOR MORE INFORMATION SEE LOAD CENTER/ATS ASM.
- 3 MAKE LOOP AS SMALL AS POSSIBLE WHEN SLIDEOUT IS COMPLETELY RETRACTED.
- 2 RUN 12V WIRE ALONG WITH REAR SLIDEOUT WIRE.
- 1 WIRE MUST BE ROUTED THROUGH CLAMPS AS SHOWN.

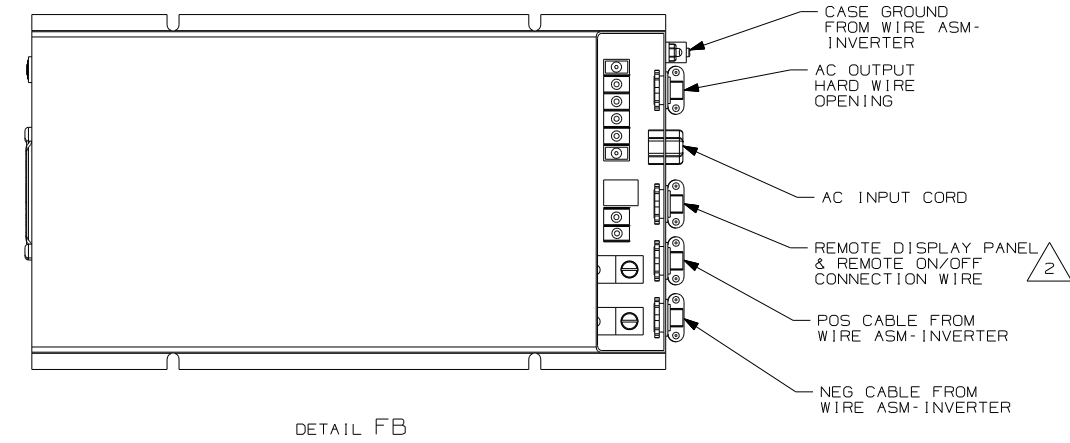
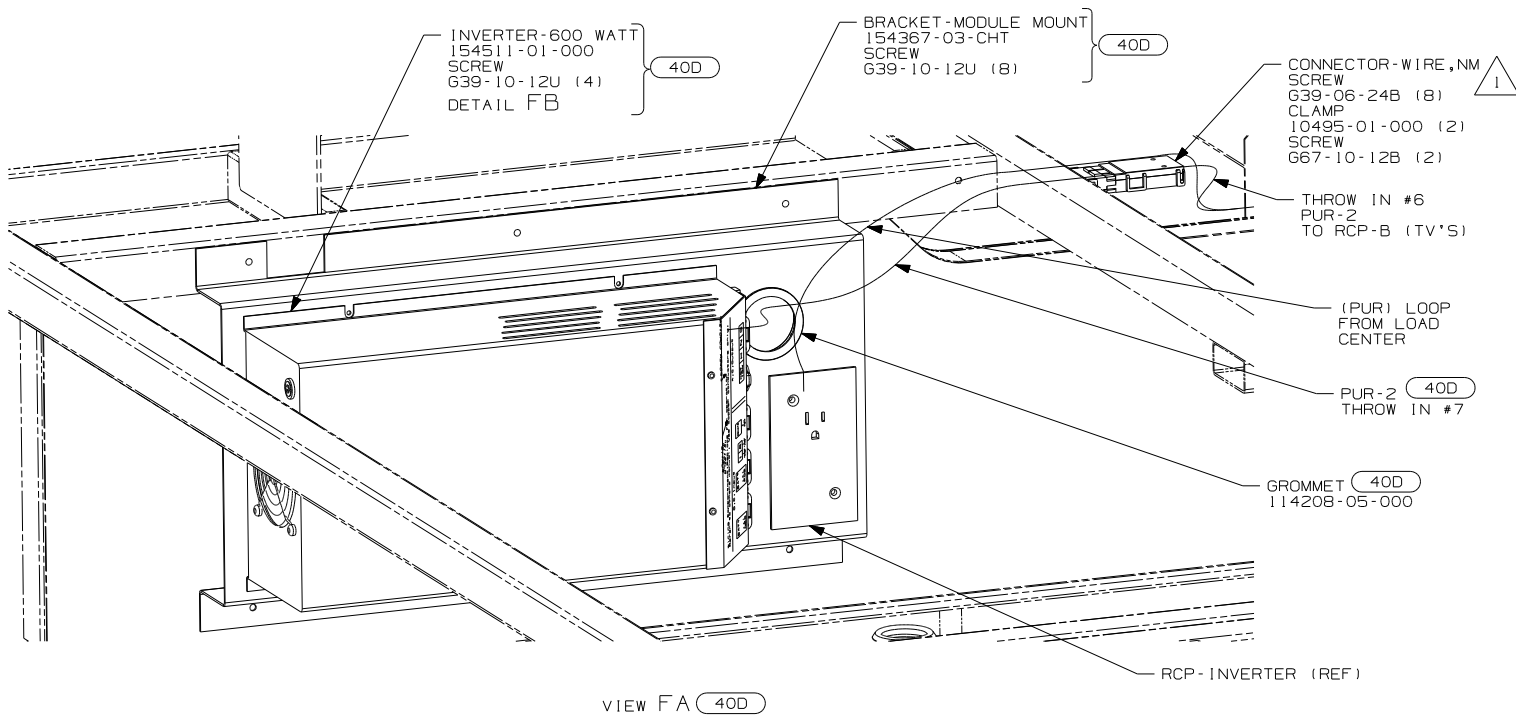
NOTES:

49M SLEEP NUMBER BED-QUEEN SIZE

FOR ELECTRICAL TORQUE SPECIFICATIONS SEE DWG NO. 128783-01-000

FOR ELECTRICAL CALLOUTS SEE DWG NO. 121339-01-000

FIRST USED	07 G38J	
DO NOT SCALE DRAWING		
TITLE:	WIRING INSTL-BODY, 110V	
SHEET 5	PART NO	157195
REV		



40D INVERTER-DC/AC,600 WATT

2 WB FROM WIRE ASM-COACH TO PUR WIRE FROM INVERTER.
1 FOR MORE INFORMATION SEE LOAD CENTER/ATS ASM.

NOTES:

FIRST USED	07 G38J		
TITLE	DO NOT SCALE DRAWING		
	WIRING INSTL-BODY,110V		
SHEET 6	PART NO	157195	REV