



DANGER

Danger of electrical shock, burns or death. Always remove all power sources before attempting any repair, service or diagnostic work. Power can be present from shore power, generator, inverter or battery. All power sources must be disabled and secured before performing any service.

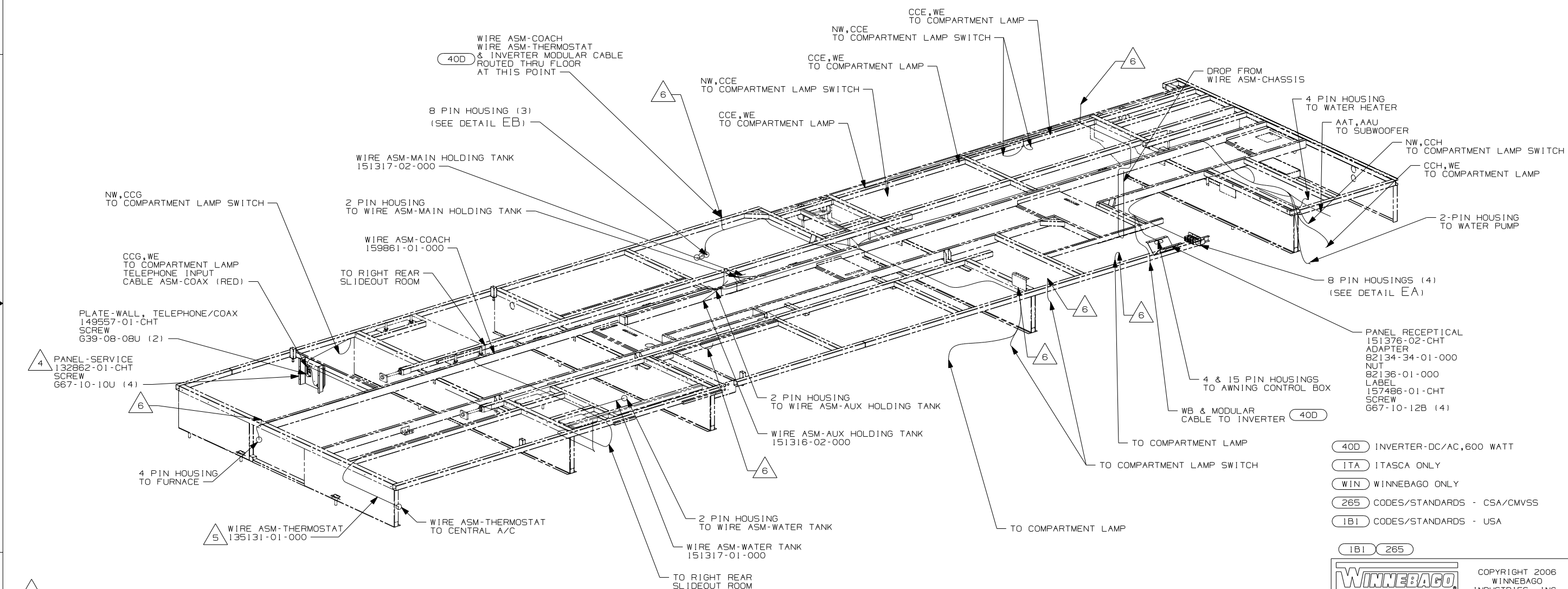


CAUTION

If you lack the skills, tools or equipment to perform diagnostic or repair work leave such work to an authorized Winnebago Industries dealer or other qualified shop.

DRAWING NO.	FEATURE
159823-01	(WIN)
159823-02	(ITA)

RELEASE	REV DATE	DWG NO
A		159823
REV ZONE	REVISION RECORD	DATE DFR-ORIG



- 6 WIRE PASSES THROUGH FLOOR AT THIS POINT.
- 5 FOR ADDITIONAL INFORMATION SEE CENTRAL A/C INSTALLATION.
- 4 CONNECT TELEPHONE WIRE TO MATCHING COLORS ON PLATE-WALL, TELEPHONE.
3. ROUTE TANK SENSOR WIRES SO THEY DO NOT PASS OVER SENSORS. USE WIRE TIE MOUNT 155366-01-000 AND WIRE TIE 8343-01-000 AS NEEDED. TANK SURFACE MUST BE CLEANED USING ISOPROPYL ALCOHOL AND PRIME WITH PRIMER 94.
2. SEE WIRING DIAGRAM-BODY, 12V FOR ADDITIONAL INFORMATION.
1. ALL WIRE TO BE CLAMPED WITH CLAMP 10495-01-000 OR WIRE TIE 8343-02-000 EVERY 600MM, UNLESS OTHERWISE SPECIFIED.

NOTES:

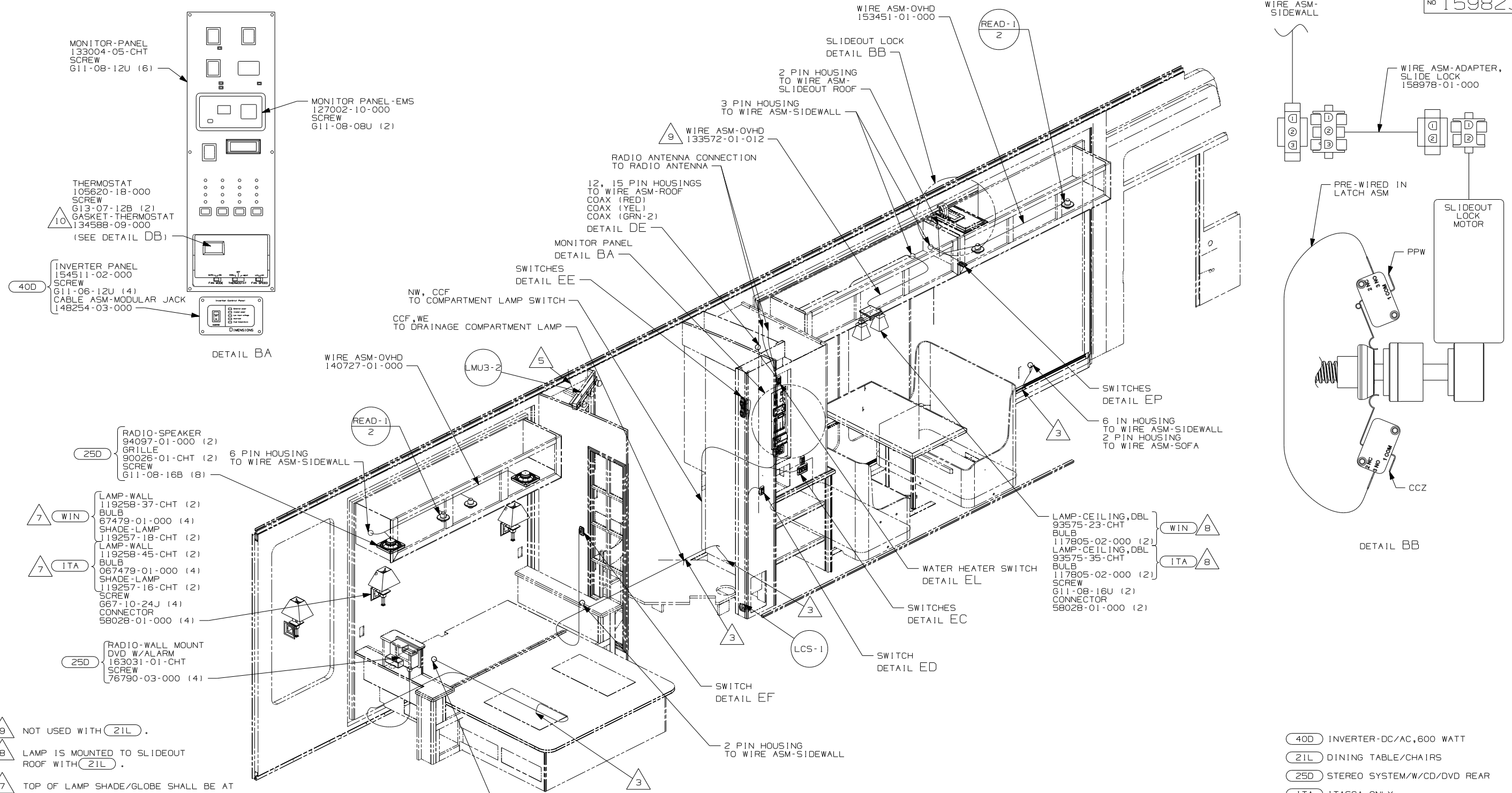
- 40D INVERTER-DC/AC, 600 WATT
- ITA ITASCA ONLY
- WIN WINNEBAGO ONLY
- 265 CODES/STANDARDS - CSA/CMVSS
- 1B1 CODES/STANDARDS - USA

WINNEBAGO		COPYRIGHT 2006 WINNEBAGO INDUSTRIES, INC.	
DFTR	ORIG. DATE		
CHKR	ALL DIMENSIONS ARE IN MILLIMETERS		
P.E.	FIRST USED	07 G37B	
M.E.			
DSNR			
UNSPECIFIED TOLERANCES ARE:	MATERIAL:		
HOLE DIM (X)	: 3		
ONE-PLACE (X.X)	: 1.5		
TWO-PLACE (X.XX)	: 0.50		
ANGLE	: 1°		
THIRD ANGLE PROJECTION			

FOR ELECTRICAL
TORQUE
SPECIFICATIONS
SEE DWG NO.
128783-01-000

(X-X)
FOR
ELECTRICAL
CALLOUTS
SEE DWG NO.
121339-01-000

DO NOT SCALE DRAWING	
TITLE:	WIRING INSTL-BODY, 12V
SHEET 1 OF 7	PART NO 159823 REV
REF:	1 1/18/2007



- 9 NOT USED WITH (21L).
- 8 LAMP IS MOUNTED TO SLIDEOUT ROOF WITH (21L).
- 7 TOP OF LAMP SHADE/GLOBE SHALL BE AT LEAST 150MM BELOW OVERHEAD CABINET.
- 6 CONNECT TELEPHONE WIRE TO MATCHING COLORS ON PLATE-WALL, TELEPHONE.
- 5 WIRE IN ROOF.
- 4 WIRE IN SIDEWALL.
- 3 WIRE PASSES THROUGH FLOOR AT THIS POINT.

2. SEE WIRING DIAGRAM-BODY, 12V FOR ADDITIONAL INFORMATION.

1. ALL WIRES TO BE CLAMPED WITH CLAMP 10495-01-000 OR WIRE TIE 8343-02-000 EVERY 600MM, UNLESS OTHERWISE SPECIFIED.

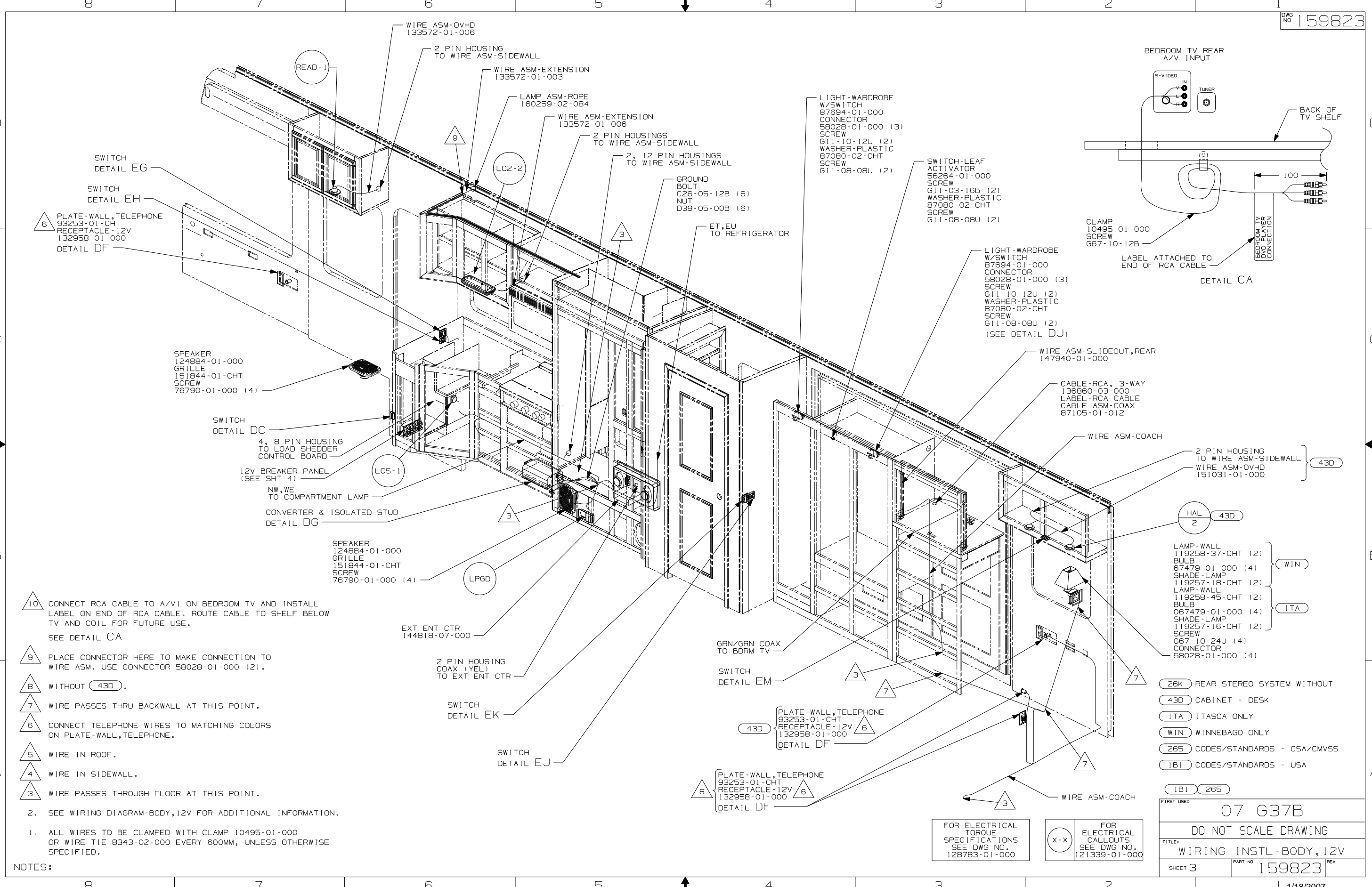
10 INSTALL GASKET ON BACK SIDE OF ONE PLACE AFTER INSTALLATION OF THERMOSTAT, MAKING SURE THAT THE GASKET COVERS AND SEALS THE HOLE THAT THE WIRES PASS THROUGH.

FOR ELECTRICAL TORQUE SPECIFICATIONS SEE DWG NO. 128783-01-000

FOR ELECTRICAL CALLOUTS SEE DWG NO. 121339-01-000

- (40D) INVERTER-DC/AC, 600 WATT
- (21L) DINING TABLE/CHAIRS
- (25D) STEREO SYSTEM/W/CD/DVD REAR
- (1TA) ITASCA ONLY
- (WIN) WINNEBAGO ONLY
- (265) CODES/STANDARDS - CSA/CMVSS
- (1B1) CODES/STANDARDS - USA

FIRST USED	07 G37B
TITLE	DO NOT SCALE DRAWING
TITLE	WIRING INSTL-BODY, 12V
SHEET 2	PART NO 159823 REV



6 PLATE-WALL, TELEPHONE
93253-01-CHT
RECEPTACLE-12V
132958-01-000
DETAIL DF

SPEAKER
124884-01-000
GRILLE
151844-01-CHT
SCREW
76790-01-000 (4)

SWITCH
DETAIL DC
4, 8 PIN HOUSING
TO LOAD SHEDDER
CONTROL BOARD
12V BREAKER PANEL
(SEE SHT 4)
LCS-1
NW, WE
TO COMPARTMENT LAMP
CONVERTER & ISOLATED STUD
DETAIL DG

SPEAKER
124884-01-000
GRILLE
151844-01-CHT
SCREW
76790-01-000 (4)
LPGD

EXT ENT CTR
144818-07-000

2 PIN HOUSING
COAX (YEL)
TO EXT ENT CTR

SWITCH
DETAIL EK

SWITCH
DETAIL EJ

WIRE ASM-OVHD
133572-01-006

2 PIN HOUSING
TO WIRE ASM-SIDEWALL

WIRE ASM-EXTENSION
133572-01-003

LAMP ASM-ROPE
160259-02-084

WIRE ASM-EXTENSION
133572-01-006

2 PIN HOUSINGS
TO WIRE ASM-SIDEWALL

2, 12 PIN HOUSINGS
TO WIRE ASM-SIDEWALL

GROUND
BOLT
C26-05-12B (6)
NUT
D39-05-00B (6)

ET, EU
TO REFRIGERATOR

LIGHT-WARDROBE
W/SWITCH
87694-01-000
CONNECTOR
58028-01-000 (3)
SCREW
G11-10-12U (2)
WASHER-PLASTIC
87080-02-CHT
SCREW
G11-08-08U (2)

SWITCH-LEAF
ACTIVATOR
56264-01-000
SCREW
G11-03-16B (2)
WASHER-PLASTIC
87080-02-CHT
SCREW
G11-08-08U (2)

LIGHT-WARDROBE
W/SWITCH
87694-01-000
CONNECTOR
58028-01-000 (3)
SCREW
G11-10-12U (2)
WASHER-PLASTIC
87080-02-CHT
SCREW
G11-08-08U (2)
(SEE DETAIL DJ)

WIRE ASM-SLIDEOUT, REAR
147940-01-000

CABLE-RCA, 3-WAY
136860-03-000
LABEL-RCA CABLE
CABLE ASM-COAX
87105-01-012

WIRE ASM-COACH

2 PIN HOUSING
TO WIRE ASM-SIDEWALL
WIRE ASM-OVHD
151031-01-000

HAL
2

LAMP-WALL
119258-37-CHT (2)
BULB
67479-01-000 (4)
SHADE-LAMP
119257-18-CHT (2)
LAMP-WALL
119258-45-CHT (2)
BULB
067479-01-000 (4)
SHADE-LAMP
119257-16-CHT (2)
SCREW
G67-10-24J (4)
CONNECTOR
58028-01-000 (4)

- 26K REAR STEREO SYSTEM WITHOUT
- 43D CABINET - DESK
- ITA ITASCA ONLY
- WIN WINNEBAGO ONLY
- 265 CODES/STANDARDS - CSA/CMVSS
- 1B1 CODES/STANDARDS - USA

FIRST USED	
07 G37B	
DO NOT SCALE DRAWING	
TITLE: WIRING INSTL - BODY, 12V	
SHEET 3	PART NO 159823
REV	

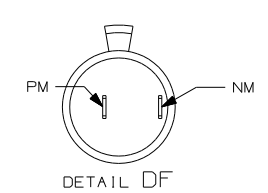
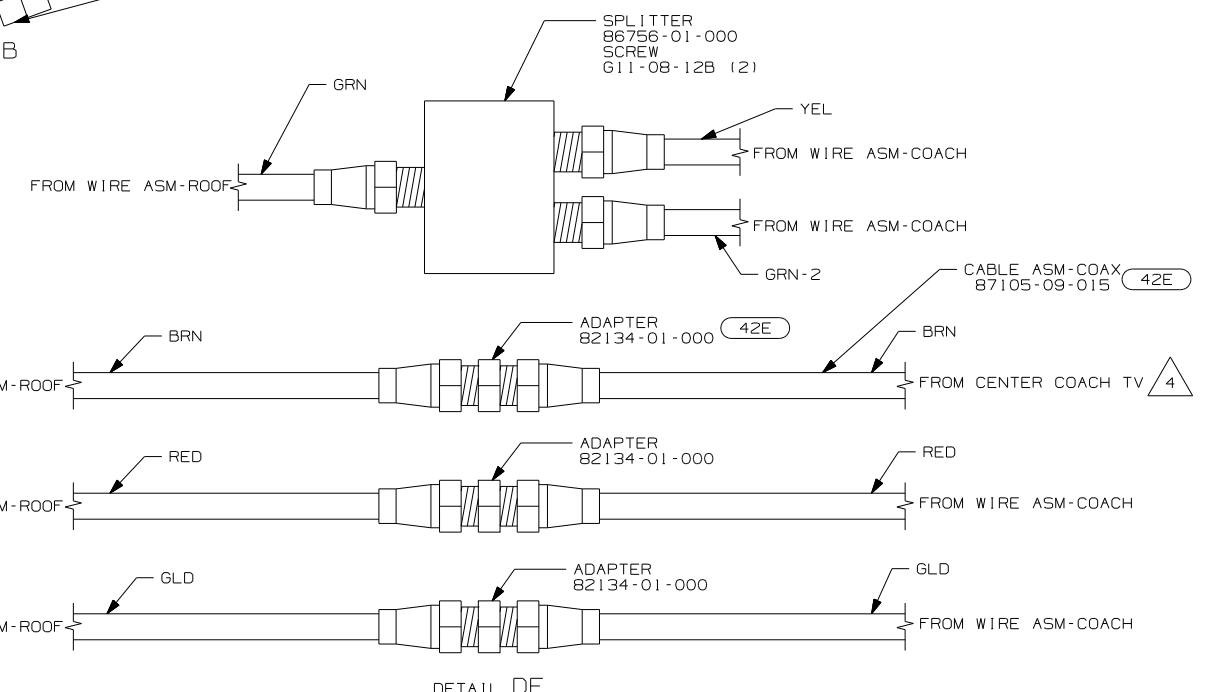
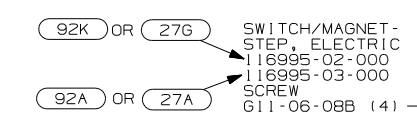
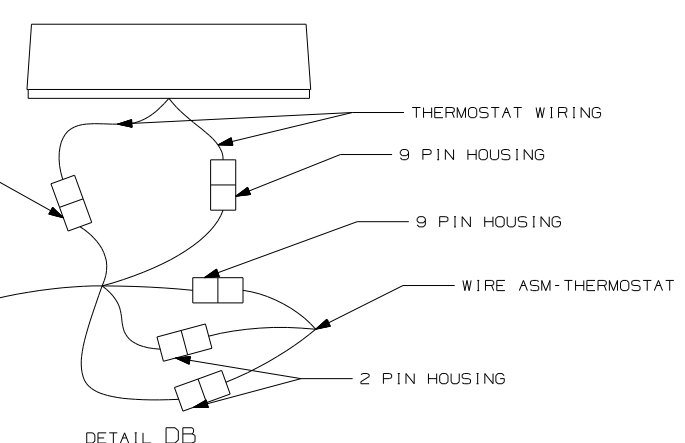
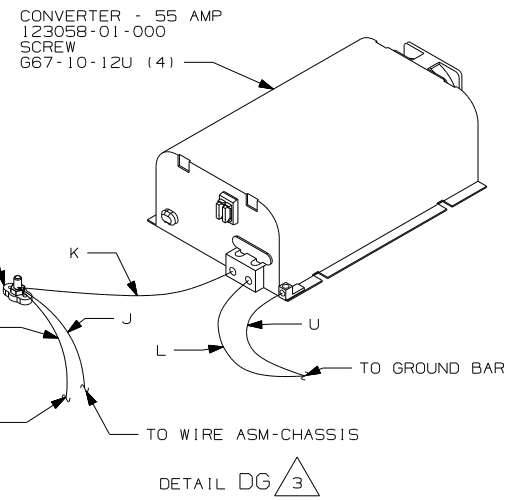
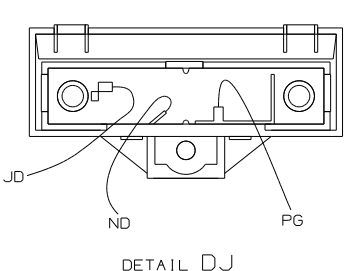
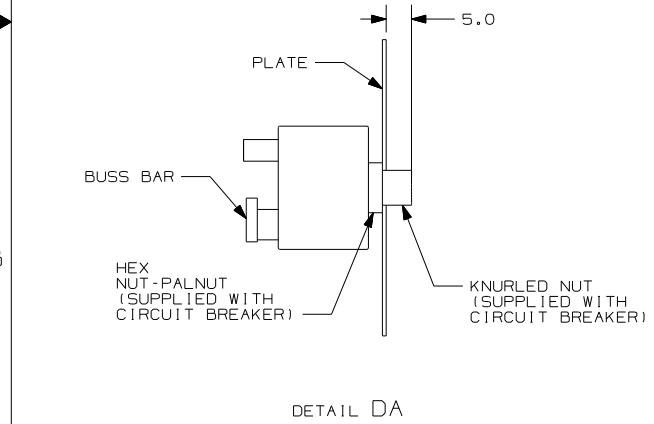
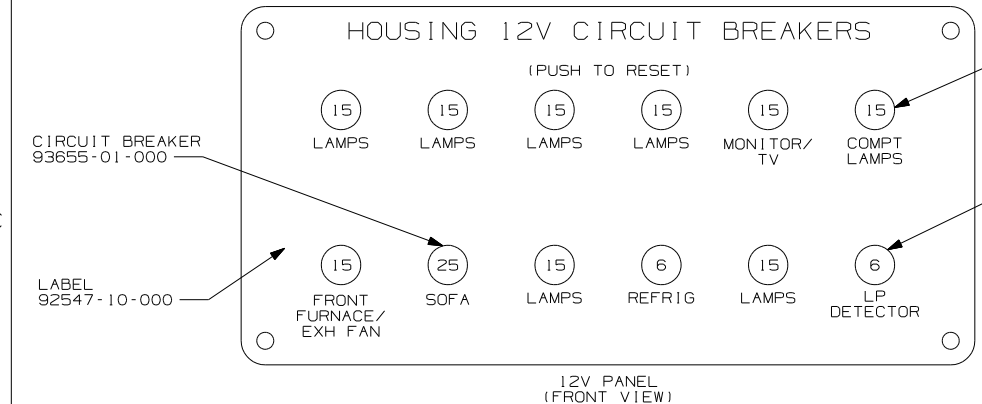
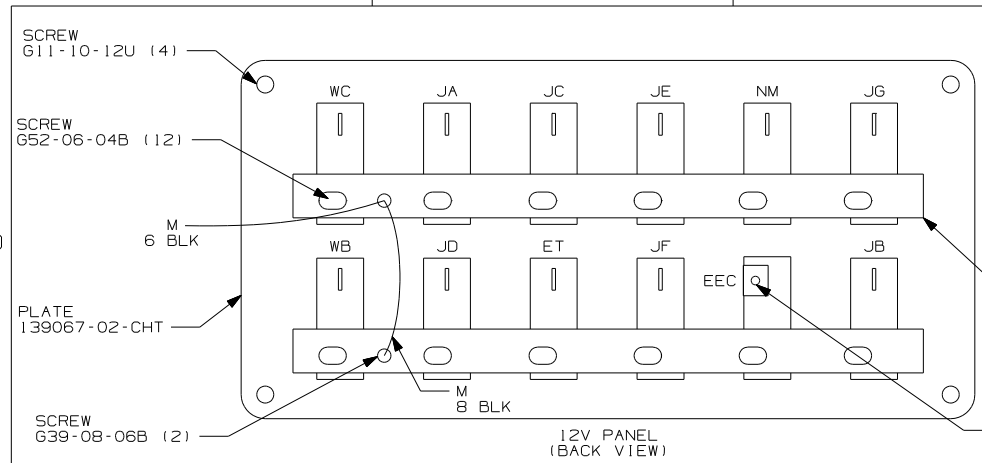
FOR ELECTRICAL
TORQUE
SPECIFICATIONS
SEE DWG NO.
128783-01-000

FOR ELECTRICAL
CALLOUTS
SEE DWG NO.
121339-01-000

NOTES:

1. ALL WIRES TO BE CLAMPED WITH CLAMP 10495-01-000 OR WIRE TIE 8343-02-000 EVERY 600MM, UNLESS OTHERWISE SPECIFIED.
2. SEE WIRING DIAGRAM-BODY, 12V FOR ADDITIONAL INFORMATION.

- 10 CONNECT RCA CABLE TO A/V1 ON BEDROOM TV AND INSTALL LABEL ON END OF RCA CABLE. ROUTE CABLE TO SHELF BELOW TV AND COIL FOR FUTURE USE. SEE DETAIL CA
- 9 PLACE CONNECTOR HERE TO MAKE CONNECTION TO WIRE ASM. USE CONNECTOR 58028-01-000 (2).
- 8 WITHOUT 43D.
- 7 WIRE PASSES THRU BACKWALL AT THIS POINT.
- 6 CONNECT TELEPHONE WIRES TO MATCHING COLORS ON PLATE-WALL, TELEPHONE.
- 5 WIRE IN ROOF.
- 4 WIRE IN SIDEWALL.
- 3 WIRE PASSES THROUGH FLOOR AT THIS POINT.



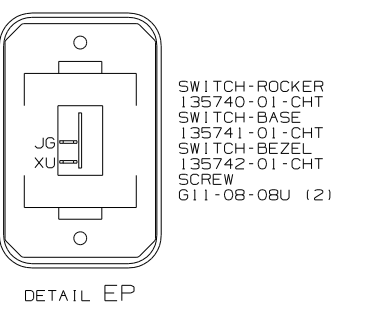
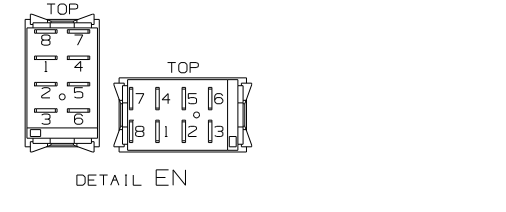
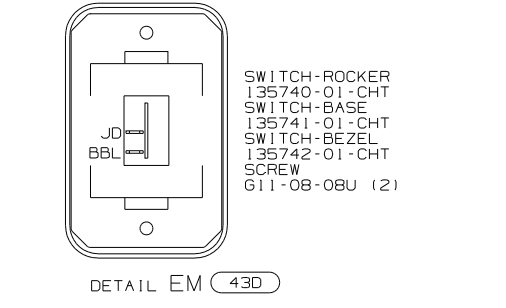
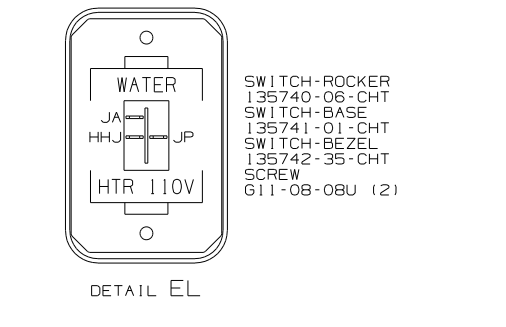
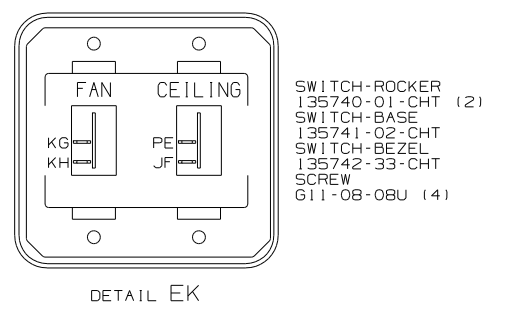
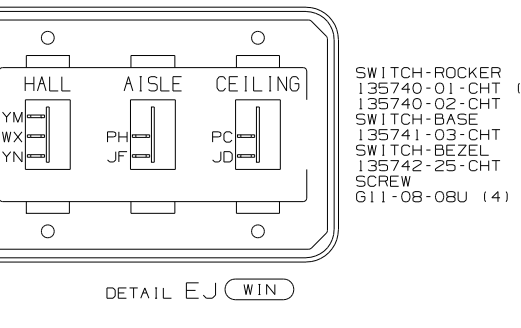
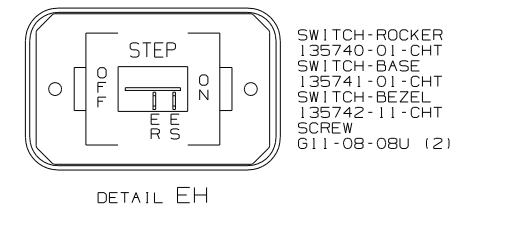
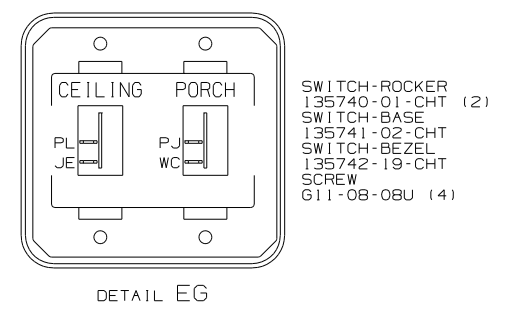
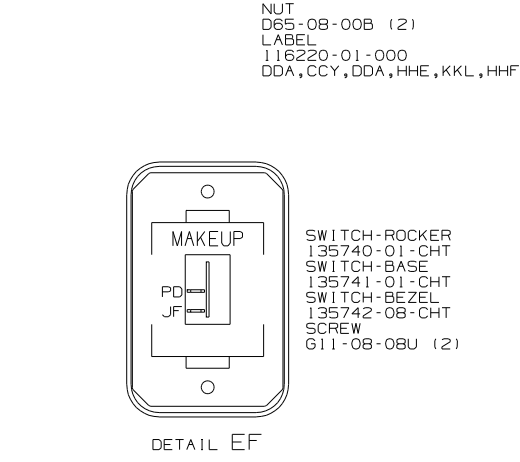
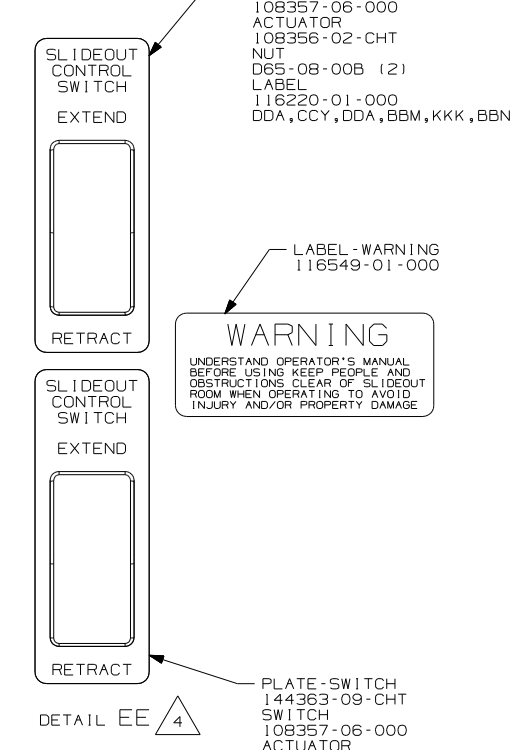
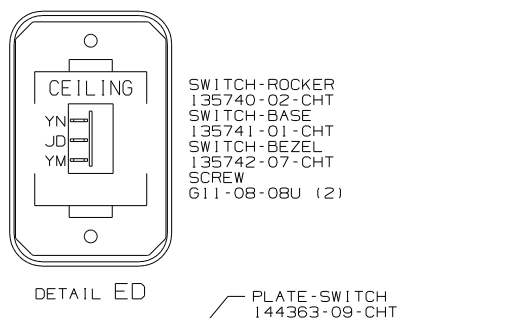
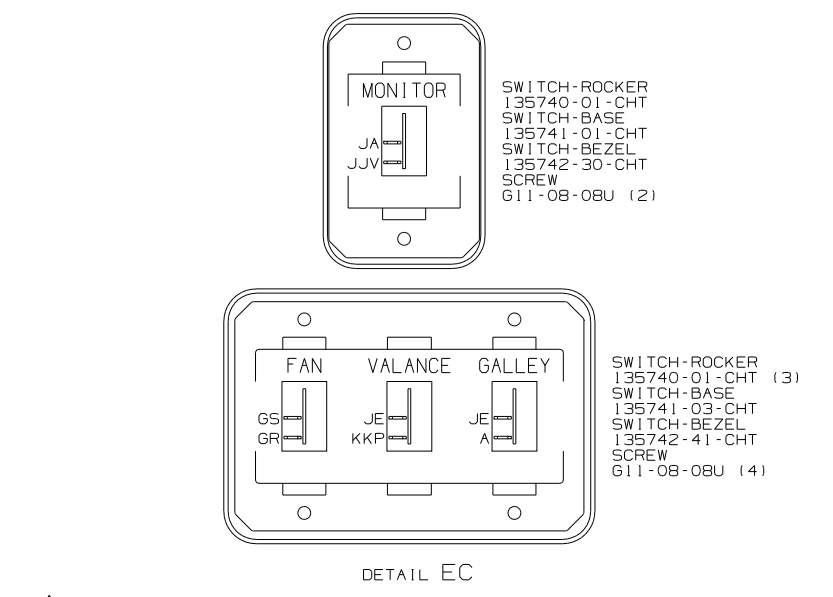
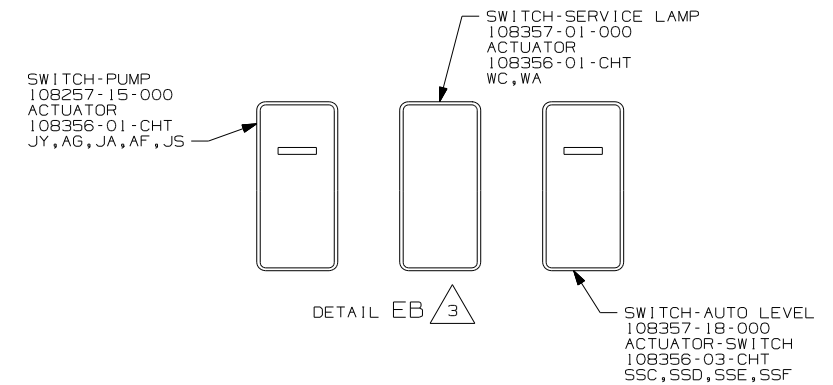
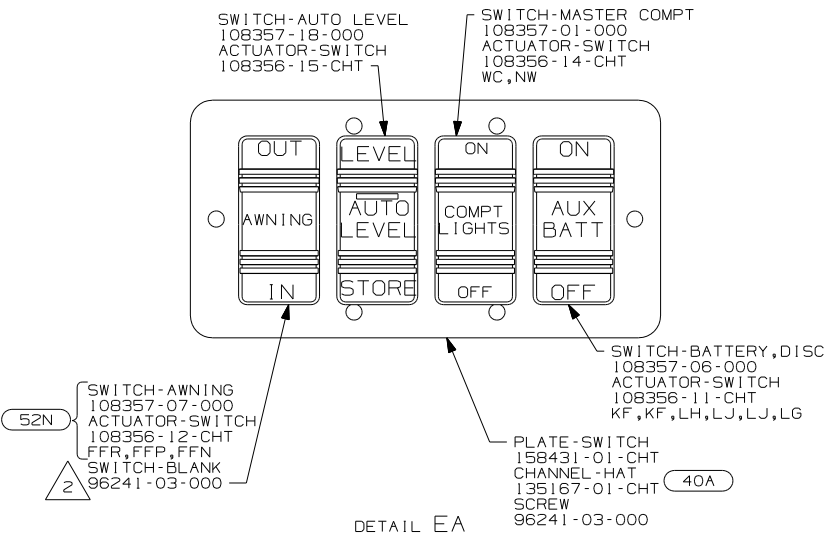
- NOTES:
- 4 SEE SIDE/TV INSTLATION FOR ADDITIONAL INFORMATION.
 - 3 FOR POSITIONING DIMENSIONS SEE WIRING INSTL-BODY, 110V SHT 5.
 - 2 MOUNT SWITCH AND SPACER TO BLOCK ON JAMB ADJUST HEIGHT TO MATCH MAGNET.
 - 1 MOUNT MAGNET USING PILOT HOLES IN SCREEN DOOR FRAME. MOUNT WITH MAGNET TOWARD SWITCH.

- 92K EXTERIOR GRAPHICS PACKAGE #2
- 92A EXT FULL BODY PAINT PKG # 2
- 42E TV-27" COLOR, STEREO W/REMOTE
- 29H HEAT PUMP - A/C CENTRAL
- 27G EXTERIOR GRAPHICS PACKAGE #1
- 27A EXT FULL BODY PAINT PKG #1
- 265 CODES/STANDARDS - CSA/CMVSS
- 1B1 CODES/STANDARDS - USA

FOR ELECTRICAL TORQUE SPECIFICATIONS SEE DWG NO. 128783-01-000

FOR ELECTRICAL CALLOUTS SEE DWG NO. 121339-01-000

FIRST USED	07 G37B
DO NOT SCALE DRAWING	
TITLE:	WIRING INSTL-BODY, 12V
SHEET 4	PART NO 159823 REV



3 WITHOUT 52N
 2 TAPE BACK UNUSED TERMINALS TO WIRE ASM-COACH WITH TAPE 8363-01-000.

4 SEE DETAIL EN FOR SWITCH ORIENTATION.

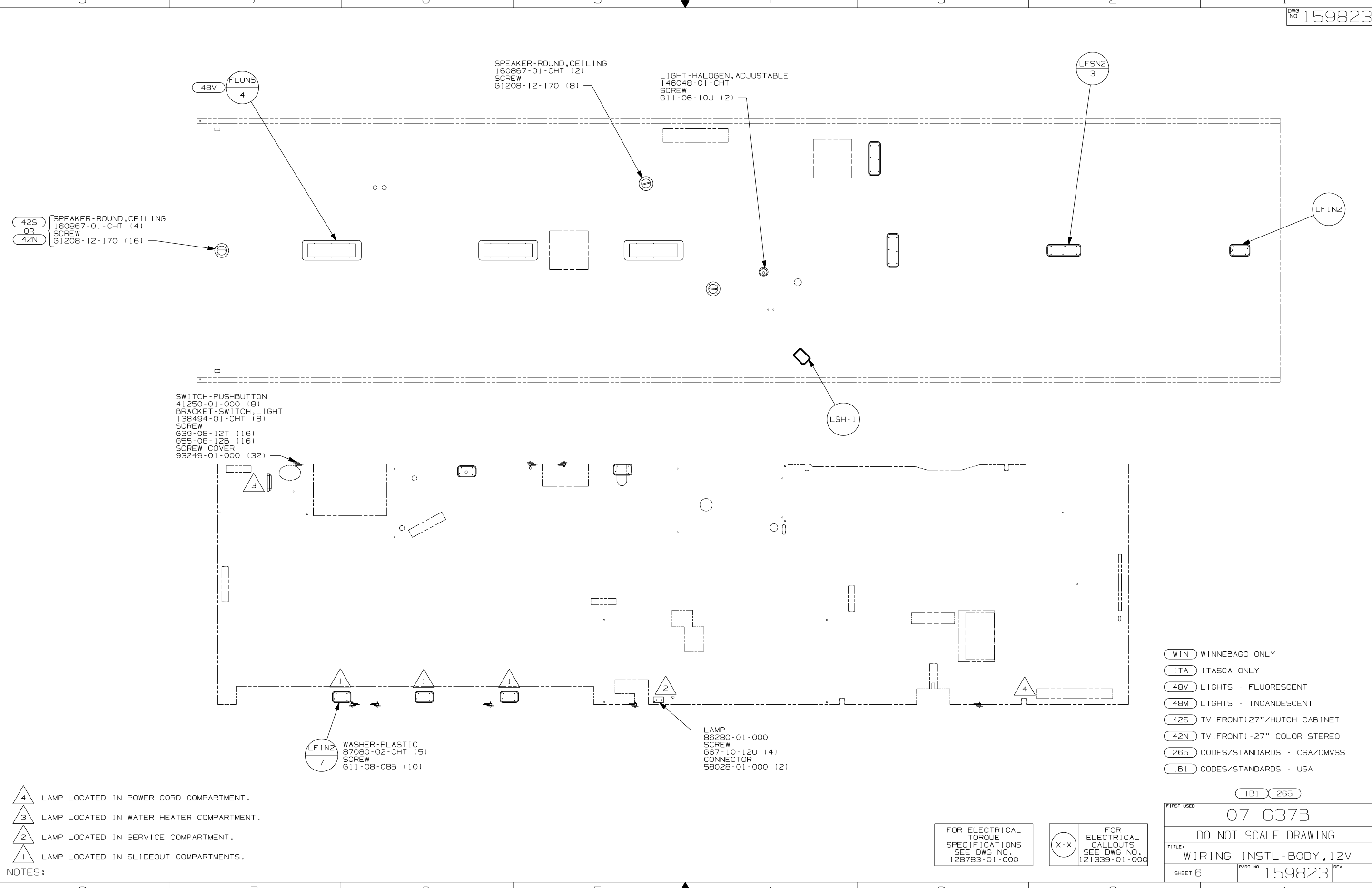
NOTES: 1. SWITCHES ARE TO BE INSTALLED AS SHOWN ON THIS DRAWING.

FOR ELECTRICAL TORQUE SPECIFICATIONS SEE DWG NO. 128783-01-000

X-X FOR ELECTRICAL CALLOUTS SEE DWG NO. 121339-01-000

- 52N AWNING - PATIO, ELECTRIC
- 43D CABINET - DESK
- 40A INVERTER-DC/AC WITHOUT
- WIN WINNEBAGO ONLY
- 265 CODES/STANDARDS - CSA/CMVSS
- 1B1 CODES/STANDARDS - USA

FIRST USED	07 G37B
TITLE	DO NOT SCALE DRAWING
	WIRING INSTL-BODY, 12V
SHEET 5	PART NO 159823 REV



42S SPEAKER-ROUND, CEILING
OR 160867-01-CHT (4)
42N SCREW 61208-12-170 (16)

SPEAKER-ROUND, CEILING
160867-01-CHT (2)
SCREW 61208-12-170 (8)

LIGHT-HALOGEN, ADJUSTABLE
146048-01-CHT
SCREW 611-06-10J (2)

SWITCH-PUSHBUTTON
41250-01-000 (8)
BRACKET-SWITCH, LIGHT
138494-01-CHT (8)
SCREW
G39-08-12T (16)
G55-08-12B (16)
SCREW COVER
93249-01-000 (32)

LAMP
86280-01-000
SCREW
667-10-12U (4)
CONNECTOR
58028-01-000 (2)

WASHER-PLASTIC
87080-02-CHT (5)
SCREW
611-08-08B (10)

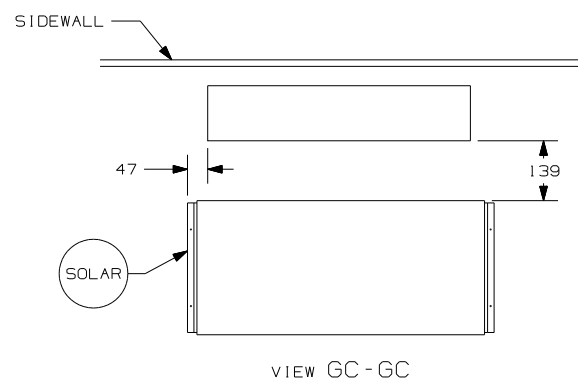
- (WIN) WINNEBAGO ONLY
- (ITA) ITASCA ONLY
- (48V) LIGHTS - FLUORESCENT
- (48M) LIGHTS - INCANDESCENT
- (42S) TV (FRONT) 27"/HUTCH CABINET
- (42N) TV (FRONT) -27" COLOR STEREO
- (265) CODES/STANDARDS - CSA/CMVSS
- (1B1) CODES/STANDARDS - USA

- NOTES:
- 4 LAMP LOCATED IN POWER CORD COMPARTMENT.
 - 3 LAMP LOCATED IN WATER HEATER COMPARTMENT.
 - 2 LAMP LOCATED IN SERVICE COMPARTMENT.
 - 1 LAMP LOCATED IN SLIDEOUT COMPARTMENTS.

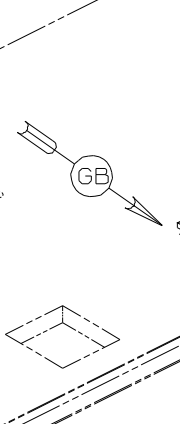
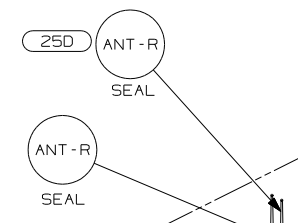
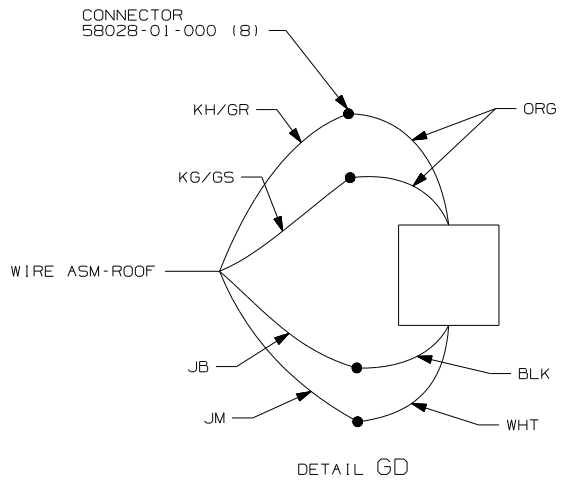
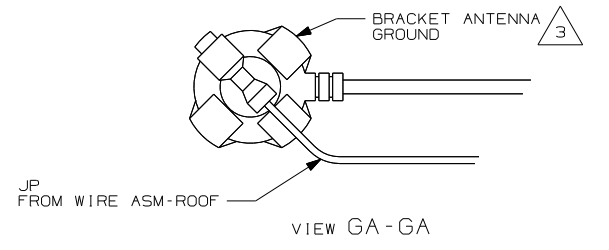
FOR ELECTRICAL
TORQUE
SPECIFICATIONS
SEE DWG NO.
128783-01-000

(X-X)
FOR
ELECTRICAL
CALLOUTS
SEE DWG NO.
121339-01-000

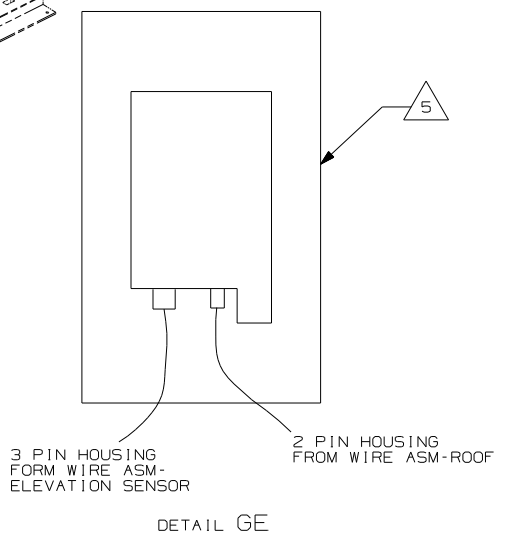
FIRST USED	07 G37B
DO NOT SCALE DRAWING	
TITLE:	WIRING INSTL-BODY, 12V
SHEET 6	PART NO 159823 REV



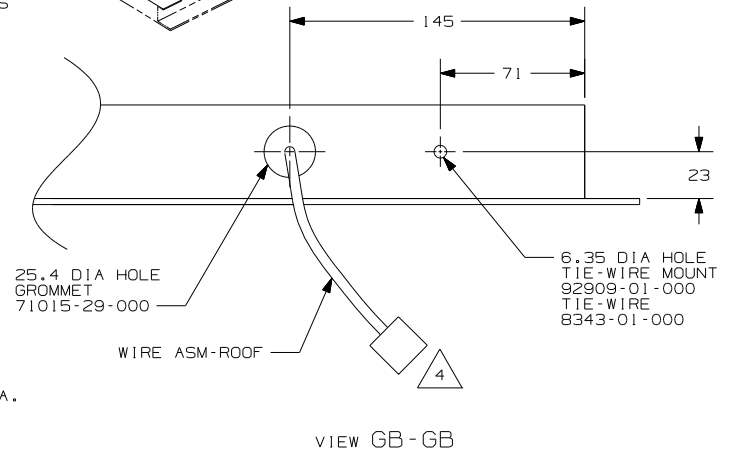
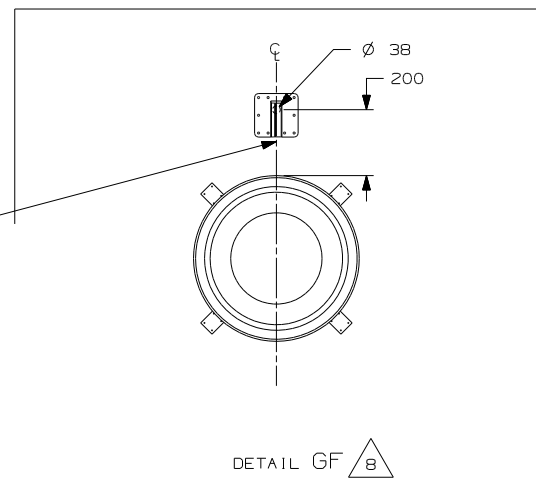
- 48R DI-1
(SEE DETAIL GF)
- 78K DA-1
(SEE DETAIL GF)
- 480 DM-1
(SEE DETAIL GE)



SEE DETAIL GD FOR FAN WIRING



THE SATELLITE DISH WIRE CONNECTIONS ARE TO BE PLACED ON THE CENTERLINE OF THE MOTORHOME FACING FORWARD



- 78K SATELLITE DISH-AUTOMATIC
- 48R SAT SYS IN-MOTION W/O RCVR
- 480 SATELLITE DISH & ELEV.SENSOR
- 25D STEREO SYSTEM/W/CD/DVD REAR
- 265 CODES/STANDARDS-CSA/CMVSS
- 1B1 CODES STANDARDS-USA

FIRST USED	07 G37B
DO NOT SCALE DRAWING	
TITLE:	WIRING INSTL-BODY, 12V
SHEET 7	PART NO 159823 REV

FOR ELECTRICAL TORQUE SPECIFICATIONS SEE DWG NO. 128783-01-000

FOR ELECTRICAL CALLOUTS SEE DWG NO. 121339-01-000

- NOTES:
- 8 REMOVE ALL SHIPPING RESTRAINTS AND FIRMLY INSERT THE SUPPLIED PLUGS INTO THE APPROPRIATE SIZED HOLES AS SPECIFIED IN THE INSTALLATION PROCESS.
 - 7 MOUNT GPS ANTENNA AS FAR TO THE REAR OF THE SATELLITE AS POSSIBLE. SECURE CABLE WITH ROOF SEALANT.
 - 6 SEE MANUFACTURE'S INSTALLATION FOR ADDITIONAL INFORMATION.
 - 5 SENSOR SUPPLIED WITH SATELLITE ASSEMBLY.
 - 4 FASTEN TO VENT.
 - 3 WRAP BRACKET LEGS AROUND ANTENNA BASE.
 - 2 ADD RUBBER BUMPERS TO ROOF UNDER EACH END OF ANTENNA TO PREVENT CONTACT WITH THE ROOF.
 - 1 SEE DWG 76319-01-000 FOR INSTALLATION OF TV ANTENNA.