



**DANGER**

**Danger of electrical shock, burns or death.** Always remove all power sources before attempting any repair, service or diagnostic work. Power can be present from shore power, generator, inverter or battery. All power sources must be disabled and secured before performing any service.

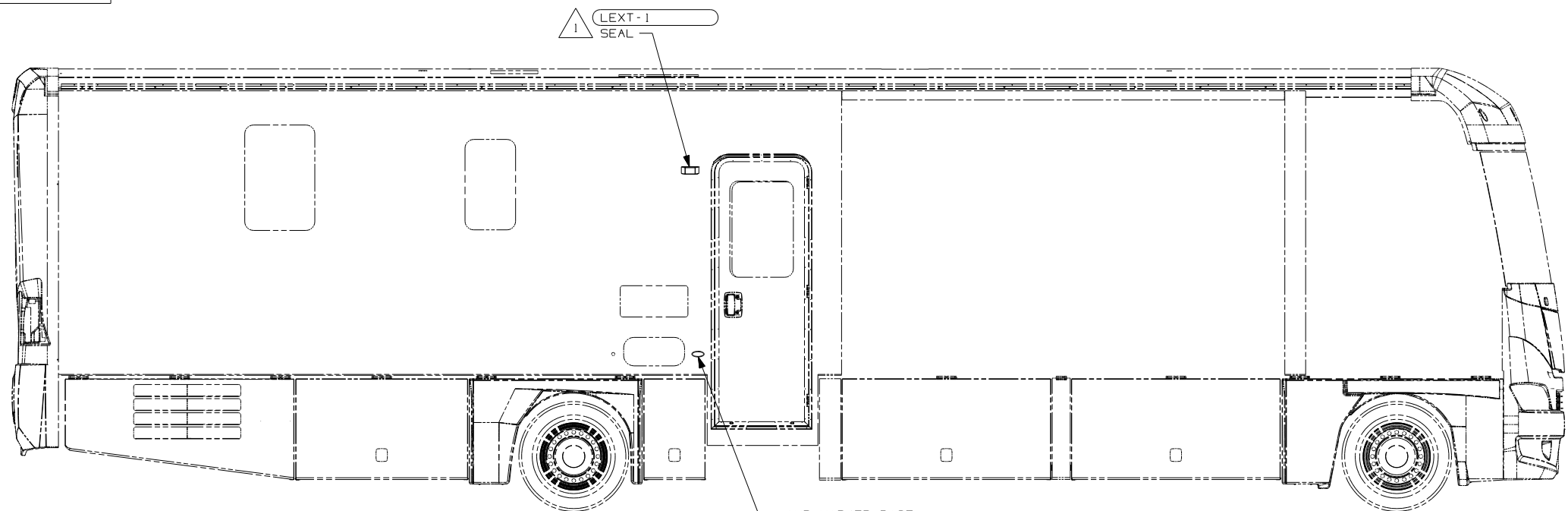


**CAUTION**

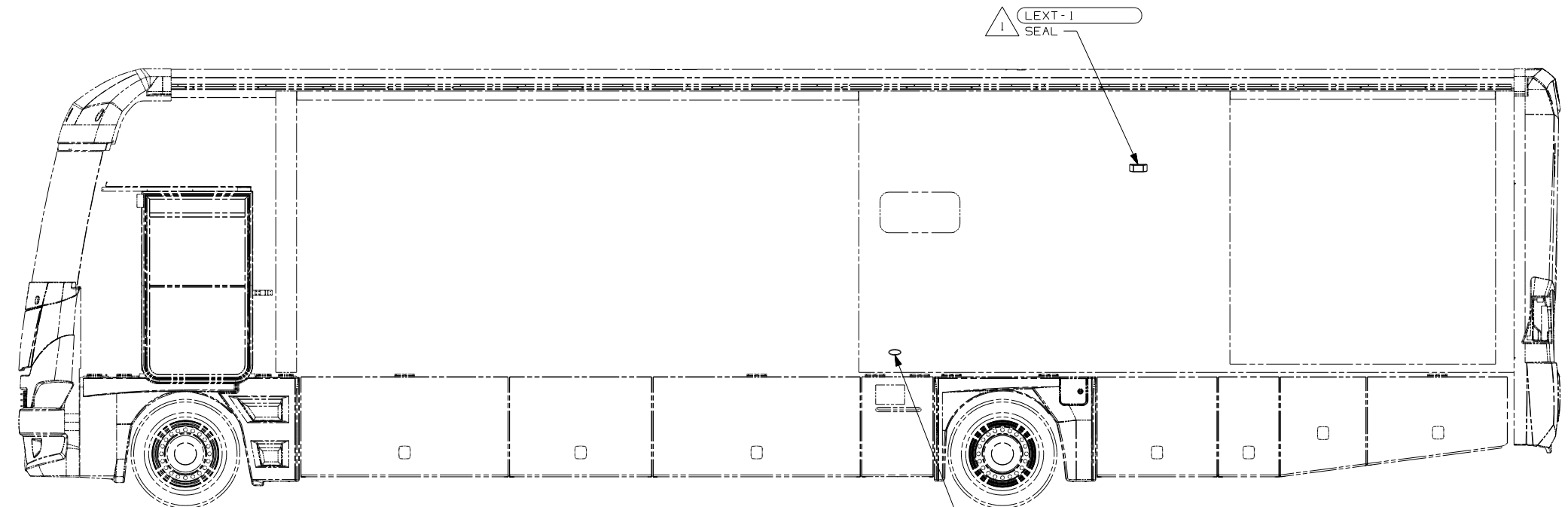
If you lack the skills, tools or equipment to perform diagnostic or repair work leave such work to an authorized Winnebago Industries dealer or other qualified shop.

DRAWING NO.	FEATURE
156372-01	(WIN)
156372-02	(ITA)

RELEASE	REV/DATE	DWG NO
A		156372
REV ZONE	REVISION RECORD	DATE DFR-ORIG



LAMP-MARKER, BASE  
147680-01-CHT  
LAMP-MARKER, LENS, AMBER  
147680-02-CHT  
SCREW  
G11-08-12U (EXT) (2)



LAMP-MARKER, BASE  
147680-01-CHT  
LAMP-MARKER, LENS, AMBER  
147680-02-CHT  
SCREW  
G11-08-12U (EXT) (2)

- (ITA) ITASCA ONLY
  - (WIN) WINNEBAGO ONLY
  - (265) CODES/STANDARDS-CSA/CMVSS
  - (1B1) CODES/STANDARDS USA
- (1B1) (265)

**WINNEBAGO** COPYRIGHT 2006 WINNEBAGO INDUSTRIES, INC.

DFTR	ORIG. DATE
CHKR	ALL DIMENSIONS ARE IN MILLIMETERS
P.E.	
M.E.	FIRST USED
DSNR	07 G-SERIES

UNSPECIFIED TOLERANCES ARE: MATERIAL:

WHOLE DIM (X)	: 3
ONE-PLACE (X.X)	: 1.5
TWO-PLACE (X.XX)	: 0.50
ANGLE	: 1°

THIRD ANGLE PROJECTION

FOR ELECTRICAL TORQUE SPECIFICATIONS SEE DWG NO. 128783-01-000

(X-X) FOR ELECTRICAL CALLOUTS SEE DWG NO. 121339-01-000

DO NOT SCALE DRAWING

TITLE: WIRING INSTL-EXTERIOR LAMPS

SHEET 1 OF 5 PART NO 156372 REV

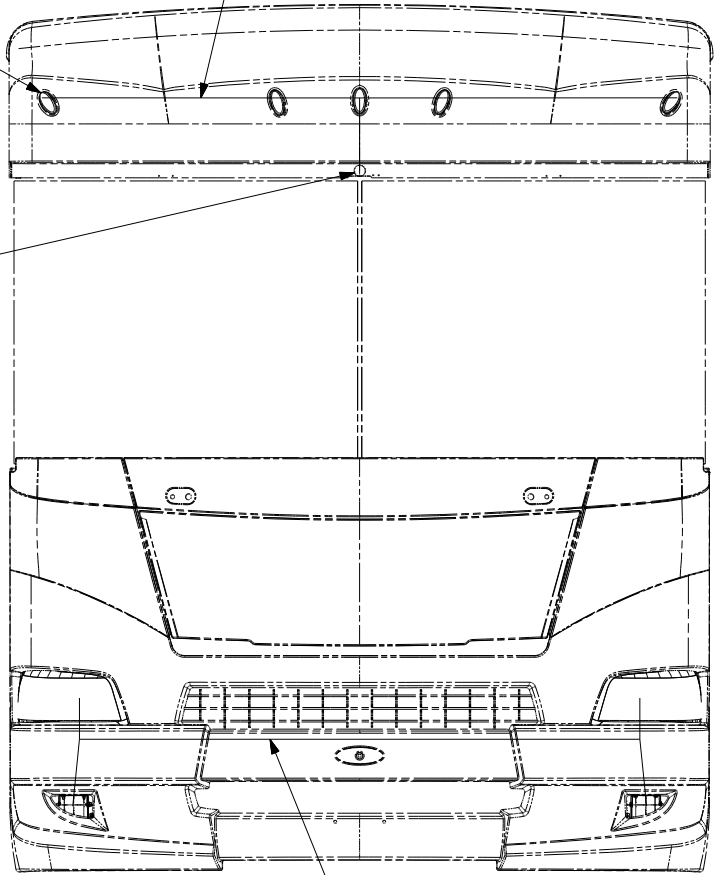
REF: 1 5/15/2007

NOTES:  
1 NOT USED ON SHELLS.

LAMP ASM-MARKER, BASE  
147680-01-CHT (5)  
LAMP ASM-MARKER, LENS, AMBER  
147680-02-CHT (5)  
SCREW  
G39-08-08T (EXT) (10)

WIRE ASM-CLEARANCE LAMPS  
129943-01-000

2 PIN HOUSING TO  
WIRE ASM-IP, MAIN



WIRE ASM-HEADLAMP, FD  
141678-11-000 ← WIN I6L  
WIRE ASM-HEADLAMP, FD  
141678-12-000 ← ITA I6L  
WIRE ASM-HEADLAMP, WH  
141678-13-000 ← WIN IPS IPV  
WIRE ASM-HEADLAMP, WH  
141678-14-000 ← ITA IPS IPV

LAMP ASM-STOP/  
TR/TAIL/BU LH  
154206-02-000 ← WIN  
154206-04-000 ← ITA  
SOCKET-LAMP  
112709-02-000  
SOCKET-LAMP  
112709-03-000  
BULB  
112707-01-000  
BULB  
112708-01-000  
BRACKET ASM-  
TAILLAMP, LAMP, LH  
152628-04-CHT  
BOLT  
C12-04-10U (3)  
SCREW  
G39-08-12U (2)

LAMP-LICENSE PLATE  
87201-01-000 (2)  
SCREW  
G11-06-12U (EXT) (4)

CONNECTOR-TRAILER  
157593-01-000  
SCREW  
101618-01-000 (4)

LAMP ASM-MARKER, BASE  
147680-01-CHT (5)  
LAMP ASM-MARKER, LENS, RED  
147680-03-CHT (5)  
SCREW  
G11-08-08B (EXT) (10)

LIGHT-THIRD BRAKE, LED  
151076-01-000 (2)  
SCREW  
G39-06-16T (4)

WIRE ASM-TAILLAMPS  
141695-05-000 ← I6L  
141695-06-000 ← IPS IPV

LAMP ASM-STOP/  
TR/TAIL/BU RH  
154206-01-000 ← WIN  
154206-03-000 ← ITA  
SOCKET-LAMP  
112709-02-000  
SOCKET-LAMP  
112709-03-000  
BULB  
112707-01-000  
BULB  
112708-01-000  
BRACKET ASM-  
TAILLAMP, LAMP, RH  
152628-02-CHT  
BOLT  
C12-04-10U (3)  
SCREW  
G39-08-12U (2)

- (57M) LAMPS-FOG
- (240) TRAILER HITCH
- (IPS) WORKHORSE 22,000#-22.5 TIRE
- (IPV) WORKHORSE 24,000#-22.5 TIRE
- (I6L) FORD 22,000#-22.5 AL WHL
- (ITA) ITASCA ONLY
- (WIN) WINNEBAGO ONLY
- (265) CODES/STANDARDS-CSA/CMVSS
- (IB1) CODES/STANDARDS USA

4. CONNECTOR-PLUG, TRAILER 146246-01-000 TO BE SUPPLIED LOOSE IN COACH WITH (240)

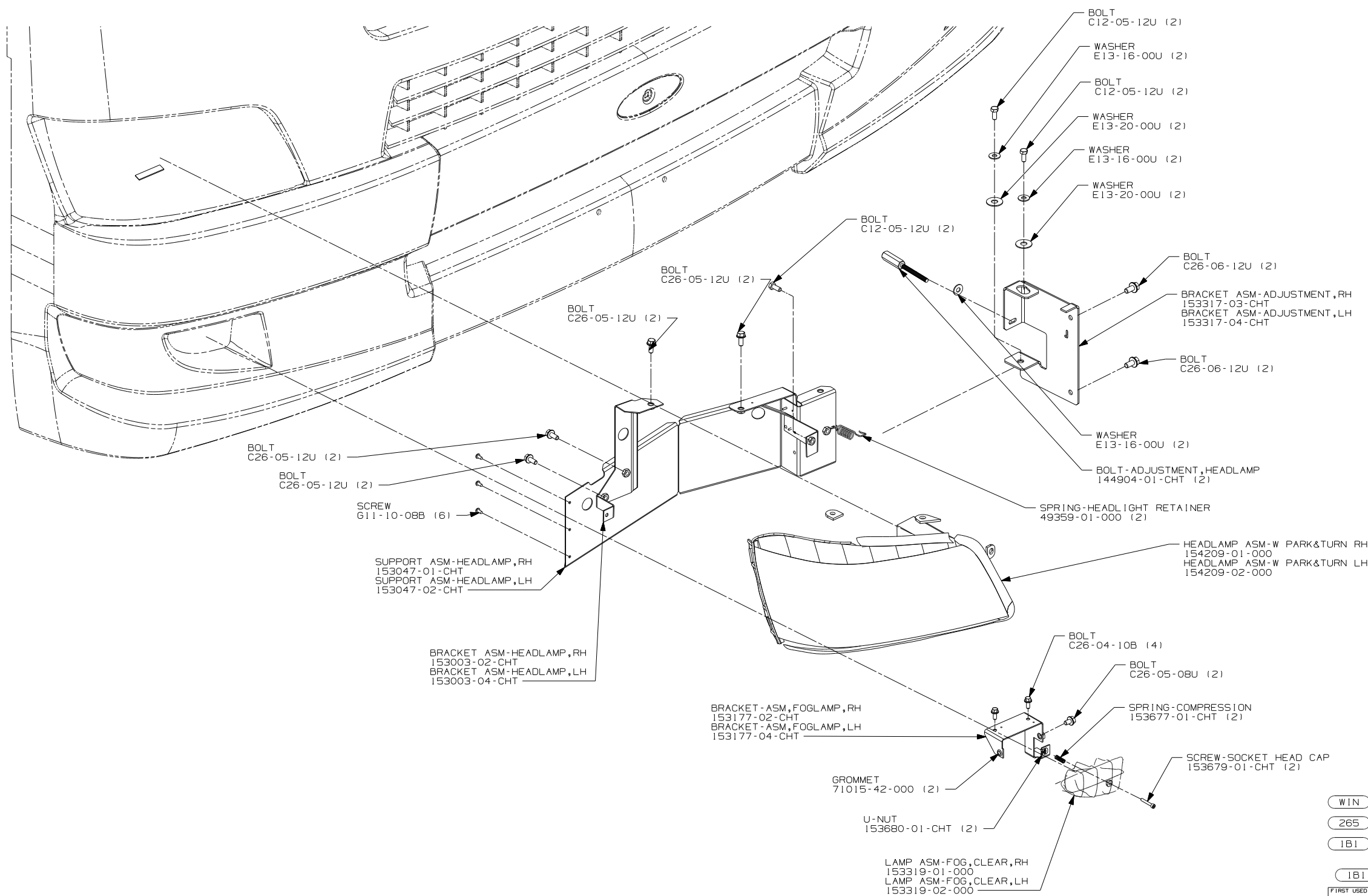
3. SECURE WIRE ASM APPROX. EVERY 450MM TO BATTERY CABLES AND BRACKETS. USE TIE-WIRE 8343-01-000 OR 93147-01-000 AS APPROPRIATE.
2. CLEAN PAINT OFF METAL (BOLT) BEFORE CONNECTING GROUND TO INSURE CONTACT. ALSO MOUNT CHASSIS SUPPLIED HORN TO GROUND BOLT.
1. GATHER ALL EXCESS WIRE AFTER MAKING ALL CONNECTIONS AND BUNDLE AND SECURE WITH TIE-WIRE 8343-01-000 OR 93147-01-000.

NOTES:

FOR ELECTRICAL  
TORQUE  
SPECIFICATIONS  
SEE DWG NO.  
128783-01-000

(X-X)  
FOR  
ELECTRICAL  
CALLOUTS  
SEE DWG NO.  
121339-01-000

FIRST USED	
07 G-SERIES	
DO NOT SCALE DRAWING	
TITLE: WIRING INSTL-EXTERIOR LAMPS	
SHEET 2	PART NO 156372 REV



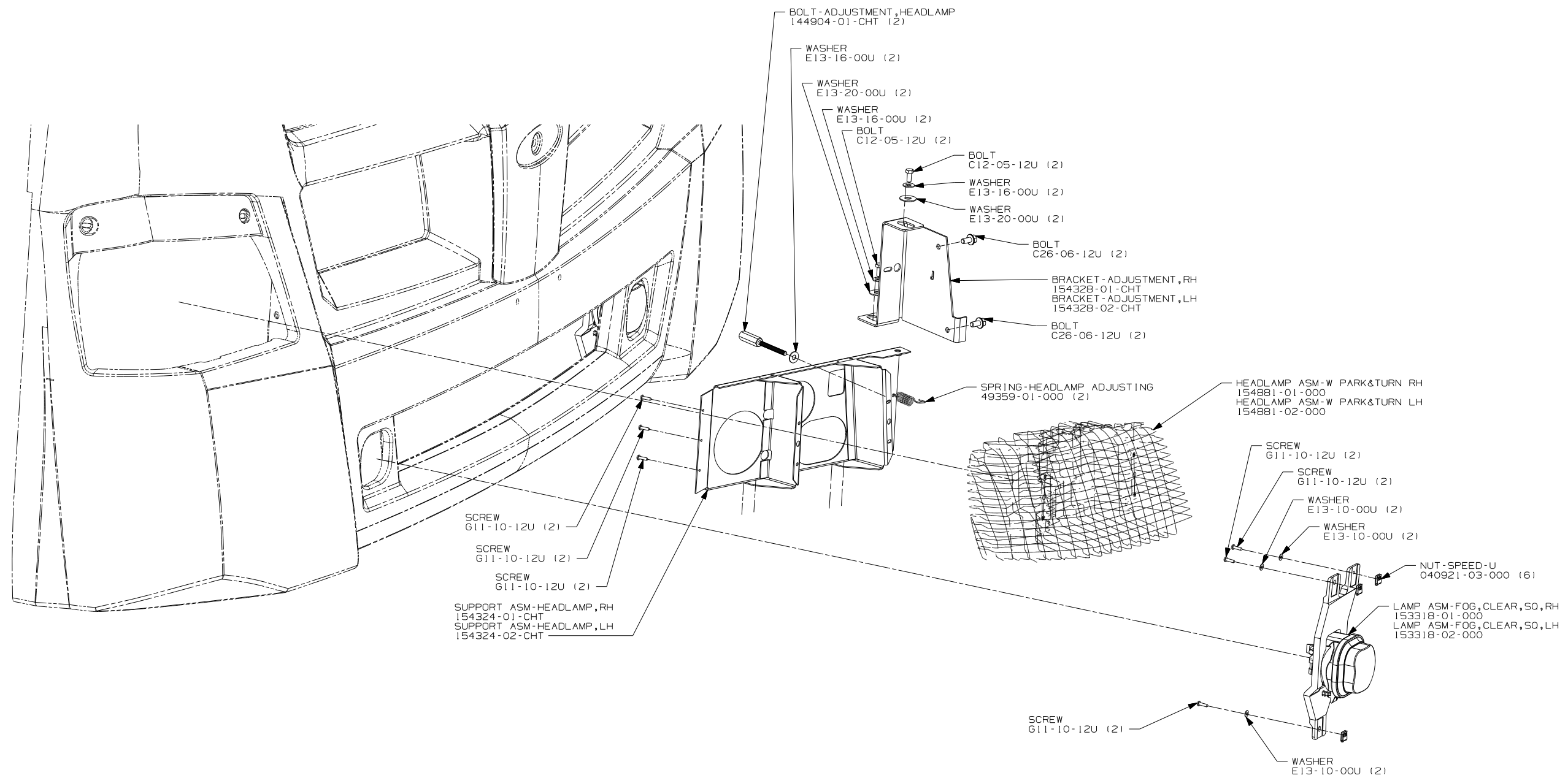
WIN WINNEBAGO ONLY  
 265 CODES/STANDARDS-CSA/CMVSS  
 1B1 CODES/STANDARDS USA

1B1 265 WIN

FIRST USED	
07 G-SERIES	
DO NOT SCALE DRAWING	
TITLE:	
WIRING INSTL-EXTERIOR LAMPS	
SHEET 3	PART NO 156372 REV

FOR ELECTRICAL TORQUE SPECIFICATIONS SEE DWG NO. 128783-01-000

X-X FOR ELECTRICAL CALLOUTS SEE DWG NO. 121339-01-000



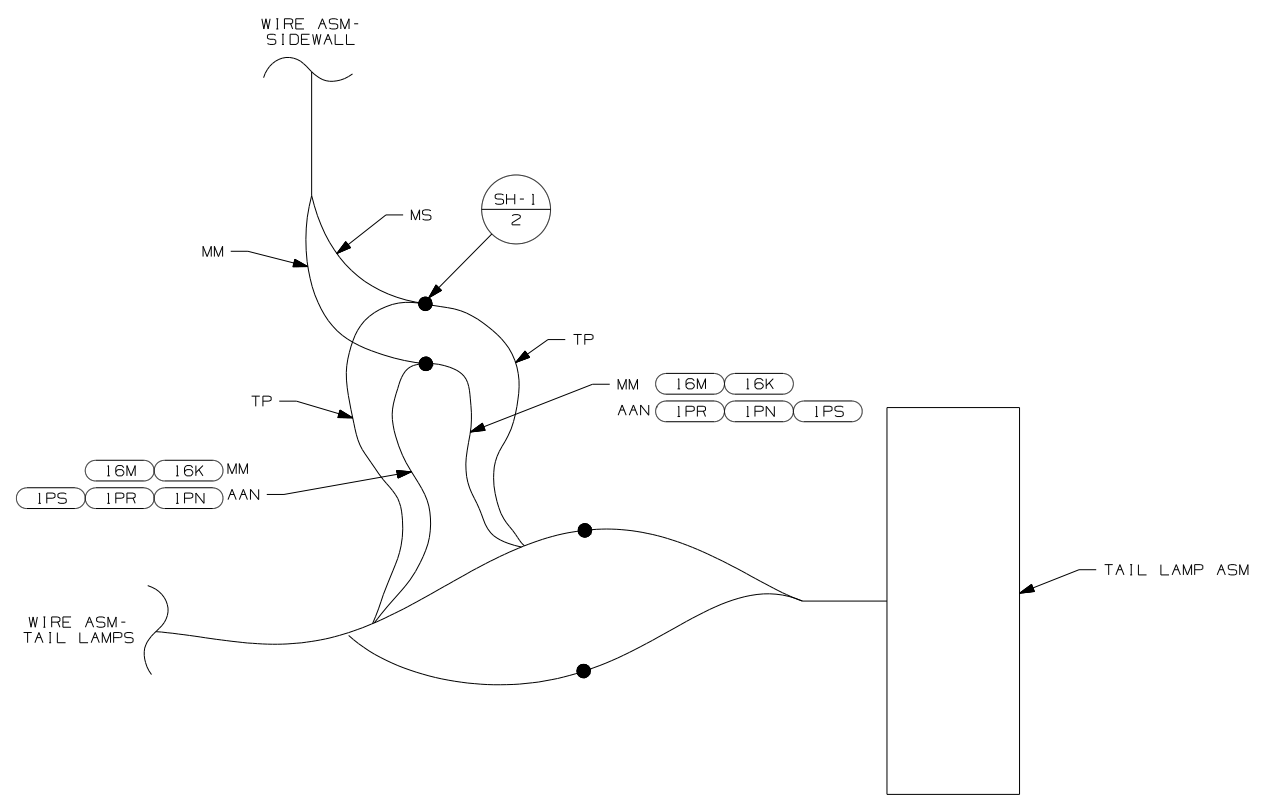
(ITA) ITASCA ONLY  
 (265) CODES/STANDARDS-CSA/CMVSS  
 (IB1) CODES/STANDARDS USA

(IB1) (265) (ITA)

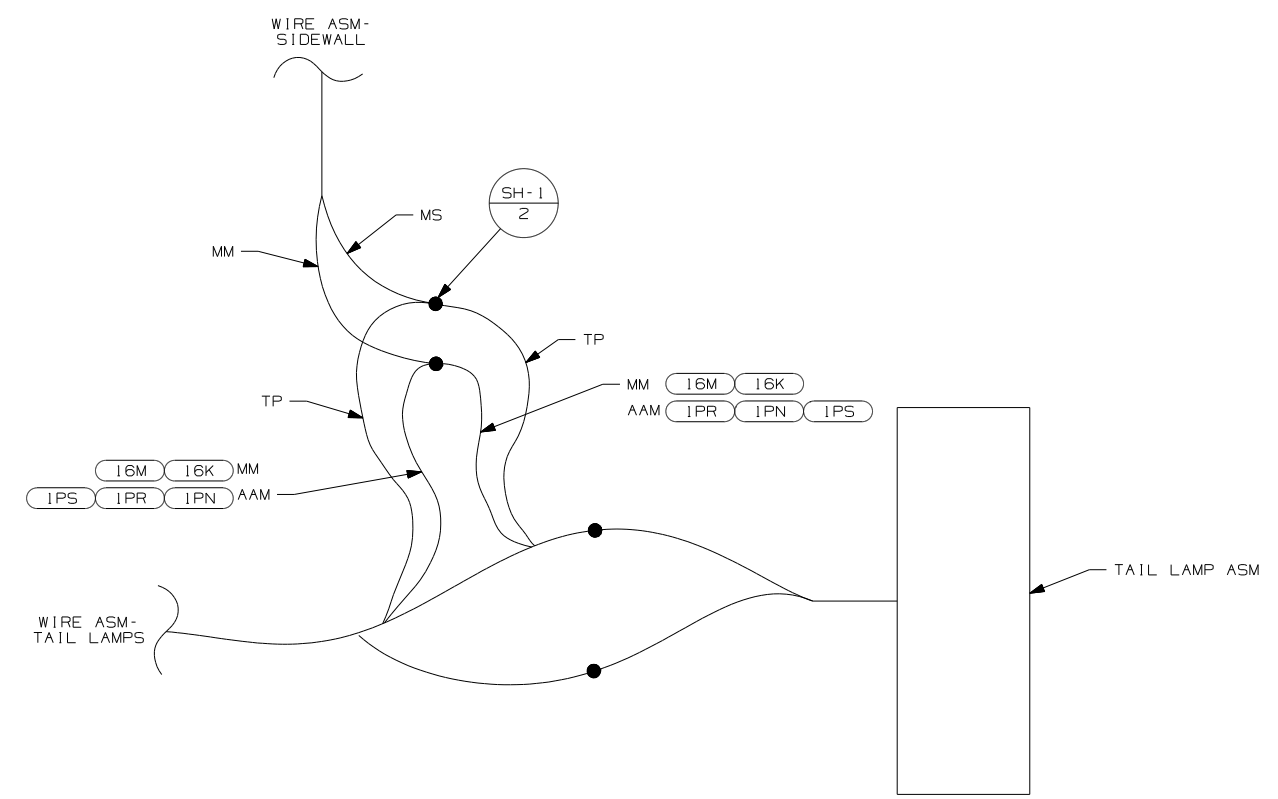
FIRST USED	
07 G-SERIES	
DO NOT SCALE DRAWING	
TITLE: WIRING INSTL-EXTERIOR LAMPS	
SHEET 4	PART NO 156372

FOR ELECTRICAL TORQUE SPECIFICATIONS SEE DWG NO. 128783-01-000

(X-X) FOR ELECTRICAL CALLOUTS SEE DWG NO. 121339-01-000



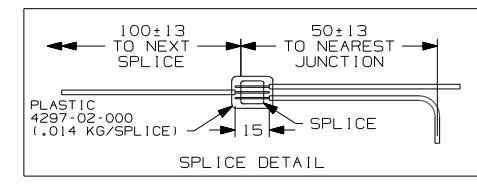
DETAIL EA (SHELLS ONLY) 1



DETAIL EB (SHELLS ONLY) 1

- 1PS WORKHORSE 22,000# - 22.5 TIRE
- 1PR WORKHORSE 22,000# - 19.5 TIRE
- 1PN WORKHORSE 20,700#
- 16M FORD CHASSIS 20,500#/V10 ENG
- 16K FORD CHASSIS 22,000
- 265 CODES/STANDARDS-CSA/CMVSS
- 1B1 CODES/STANDARDS USA

1B1 265	
FIRST USED	07 G-SERIES
DO NOT SCALE DRAWING	
TITLE: WIRING INSTL-EXTERIOR LAMPS	
SHEET 5	PART NO 156372 REV



FOR ELECTRICAL CALLOUTS SEE DWG NO. 121339-01-000

NOTES: 1 CUT AND RECONNECT AS SHOWN.