



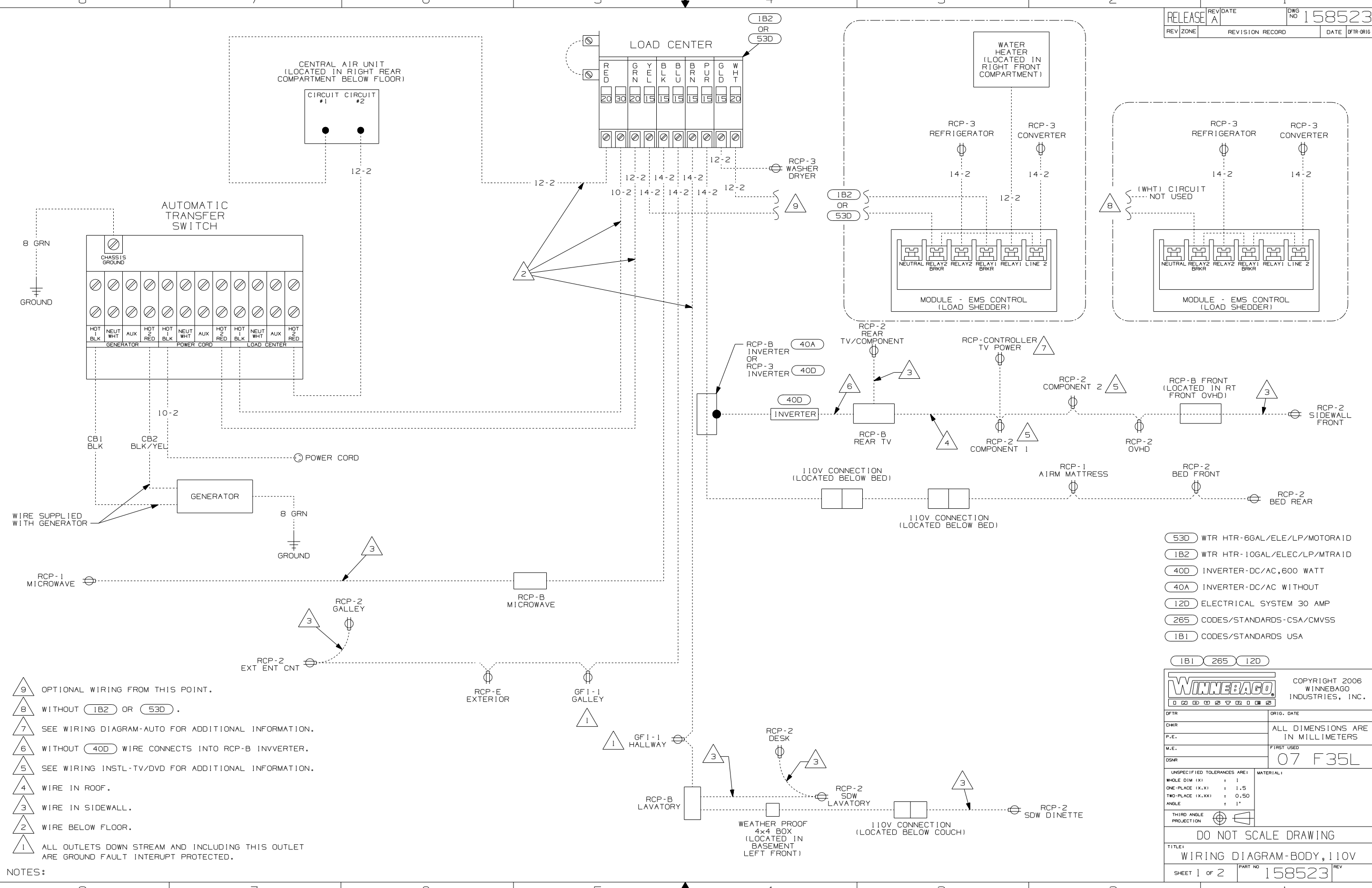
**DANGER**

**Danger of electrical shock, burns or death.** Always remove all power sources before attempting any repair, service or diagnostic work. Power can be present from shore power, generator, inverter or battery. All power sources must be disabled and secured before performing any service.



**CAUTION**

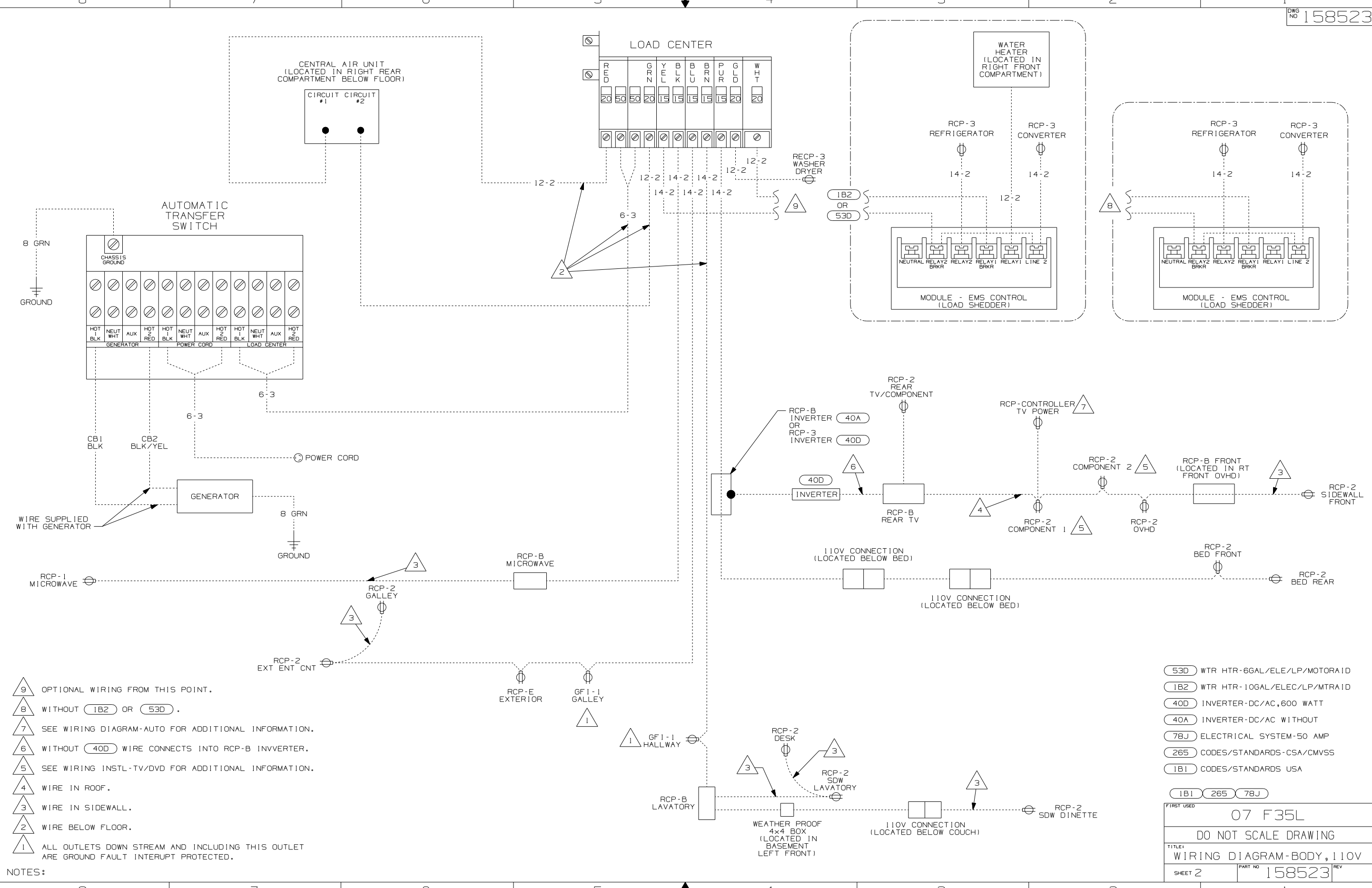
If you lack the skills, tools or equipment to perform diagnostic or repair work leave such work to an authorized Winnebago Industries dealer or other qualified shop.



- NOTES:
- 9 OPTIONAL WIRING FROM THIS POINT.
  - 8 WITHOUT 1B2 OR 53D.
  - 7 SEE WIRING DIAGRAM-AUTO FOR ADDITIONAL INFORMATION.
  - 6 WITHOUT 40D WIRE CONNECTS INTO RCP-B INVERTER.
  - 5 SEE WIRING INSTL-TV/DVD FOR ADDITIONAL INFORMATION.
  - 4 WIRE IN ROOF.
  - 3 WIRE IN SIDEWALL.
  - 2 WIRE BELOW FLOOR.
  - 1 ALL OUTLETS DOWN STREAM AND INCLUDING THIS OUTLET ARE GROUND FAULT INTERRUPT PROTECTED.

- 53D WTR HTR-6GAL/ELE/LP/MOTORAID
- 1B2 WTR HTR-10GAL/ELEC/LP/MTRAID
- 40D INVERTER-DC/AC,600 WATT
- 40A INVERTER-DC/AC WITHOUT
- 12D ELECTRICAL SYSTEM 30 AMP
- 265 CODES/STANDARDS-CSA/CMVSS
- 1B1 CODES/STANDARDS USA

<b>WINNEBAGO</b>		COPYRIGHT 2006 WINNEBAGO INDUSTRIES, INC.	
DFTR	ORIG. DATE	ALL DIMENSIONS ARE IN MILLIMETERS	
CHKR		FIRST USED <b>07 F35L</b>	
P.E.		UNSPECIFIED TOLERANCES ARE:	
M.E.		WHOLE DIM (X)	: 1
DSNR		ONE-PLACE (X.X)	: 1.5
		TWO-PLACE (X.XX)	: 0.50
		ANGLE	: 1°
THIRD ANGLE PROJECTION		MATERIAL:	
<b>DO NOT SCALE DRAWING</b>			
TITLE: <b>WIRING DIAGRAM-BODY, 110V</b>			
SHEET 1 OF 2	PART NO	REV	
	<b>158523</b>		



- NOTES:
- 9 OPTIONAL WIRING FROM THIS POINT.
  - 8 WITHOUT (1B2) OR (53D).
  - 7 SEE WIRING DIAGRAM-AUTO FOR ADDITIONAL INFORMATION.
  - 6 WITHOUT (40D) WIRE CONNECTS INTO RCP-B INVVERTER.
  - 5 SEE WIRING INSTL-TV/DVD FOR ADDITIONAL INFORMATION.
  - 4 WIRE IN ROOF.
  - 3 WIRE IN SIDEWALL.
  - 2 WIRE BELOW FLOOR.
  - 1 ALL OUTLETS DOWN STREAM AND INCLUDING THIS OUTLET ARE GROUND FAULT INTERUPT PROTECTED.

- (53D) WTR HTR-6GAL/ELE/LP/MOTORA1D
- (1B2) WTR HTR-10GAL/ELEC/LP/MTRA1D
- (40D) INVERTER-DC/AC,600 WATT
- (40A) INVERTER-DC/AC WITHOUT
- (78J) ELECTRICAL SYSTEM-50 AMP
- (265) CODES/STANDARDS-CSA/CMVSS
- (1B1) CODES/STANDARDS USA

FIRST USED	07 F35L	
TITLE	DO NOT SCALE DRAWING	
WIRING DIAGRAM-BODY, 110V		
SHEET 2	PART NO	158523
REV		