



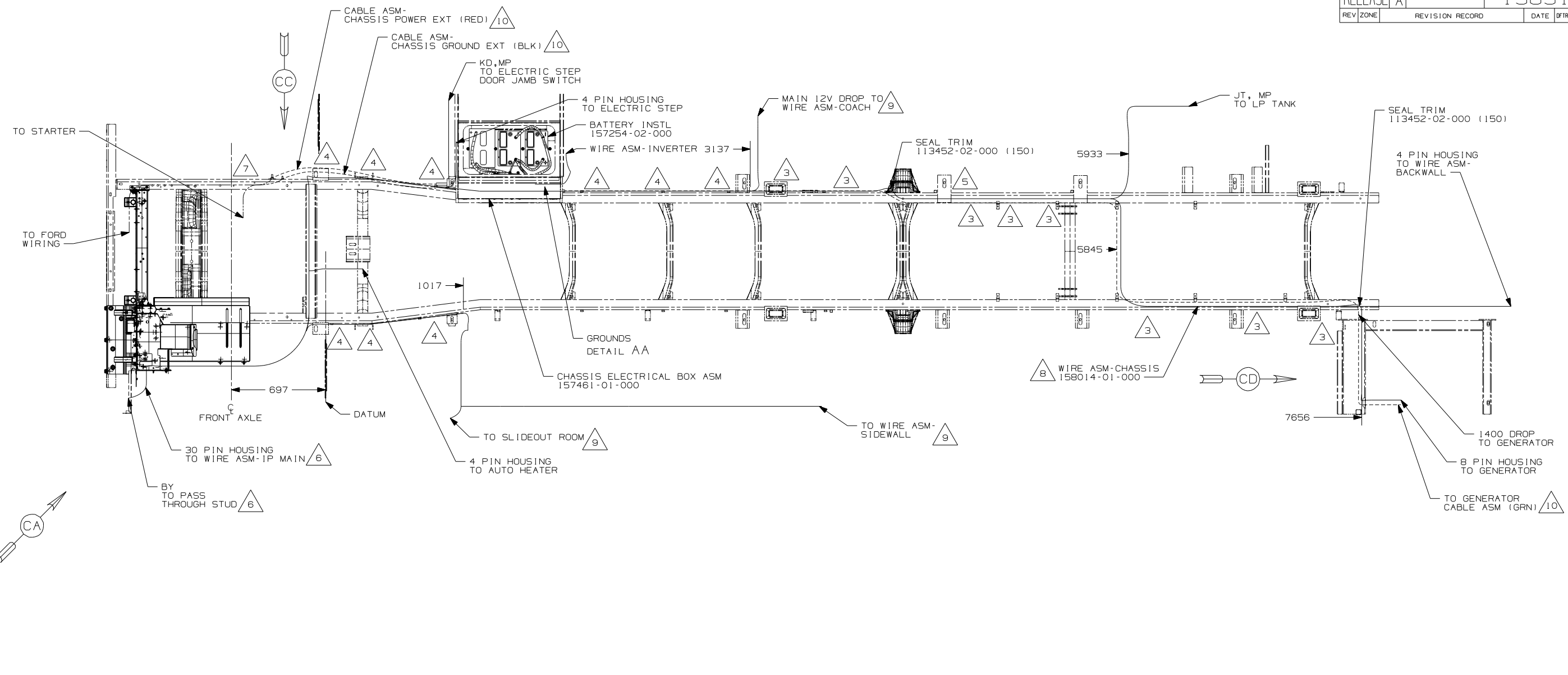
**DANGER**

**Danger of electrical shock, burns or death.** Always remove all power sources before attempting any repair, service or diagnostic work. Power can be present from shore power, generator, inverter or battery. All power sources must be disabled and secured before performing any service.



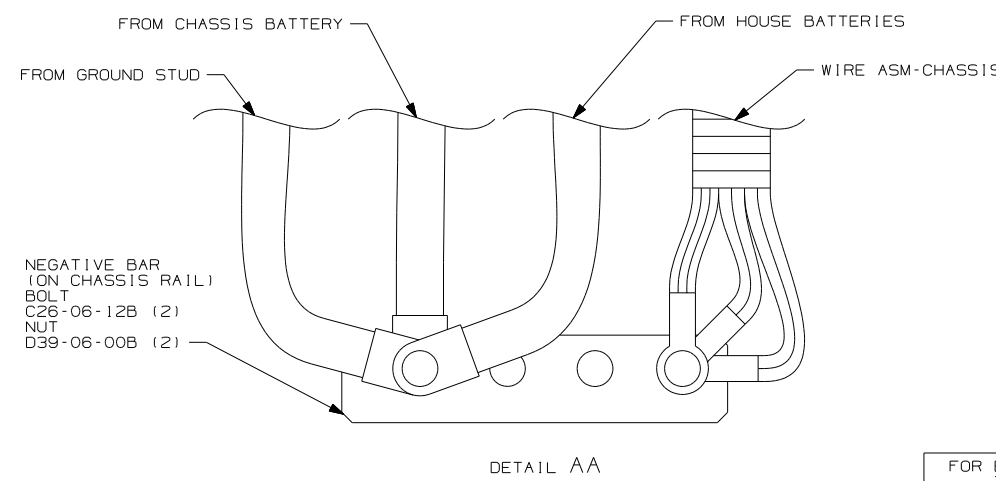
**CAUTION**

If you lack the skills, tools or equipment to perform diagnostic or repair work leave such work to an authorized Winnebago Industries dealer or other qualified shop.



- 10 SEE BATTERY INSTL FOR ADDITIONAL INFORMATION.
- 9 SEE WIRE ASM-CHASSIS FOR ADDITIONAL INFORMATION.
- 8 COIL UP EXCESS WIRE AND TIE BACK TO WIRE ASM WITH WIRE TIE 8343-02-000.
- 7 SECURE SO WIRES DO NOT CONTACT EXHAUST.
- 6 SEE WIRING INSTL-FRONT END FOR ADDITIONAL INFORMATION.
- 5 ROUTE WIRES & CABLE INSIDE CHASSIS RAIL AT THIS POINT AND TO THE REAR.
- 4 CLAMP 83610-02-000, SCREW G39-08-12B.
- 3 CLAMP 83610-01-000, SCREW G39-08-12B.

2. SECURE CONDUIT 41953, TAB AS REQUIRED, OVER ALL WIRES IN CONTACT WITH SHARP EDGES.  
 1. LEGEND: — WINNEBAGO: - - - - CABLE: - - - - CHASSIS SUPPLIED WIRING.  
 NOTES:

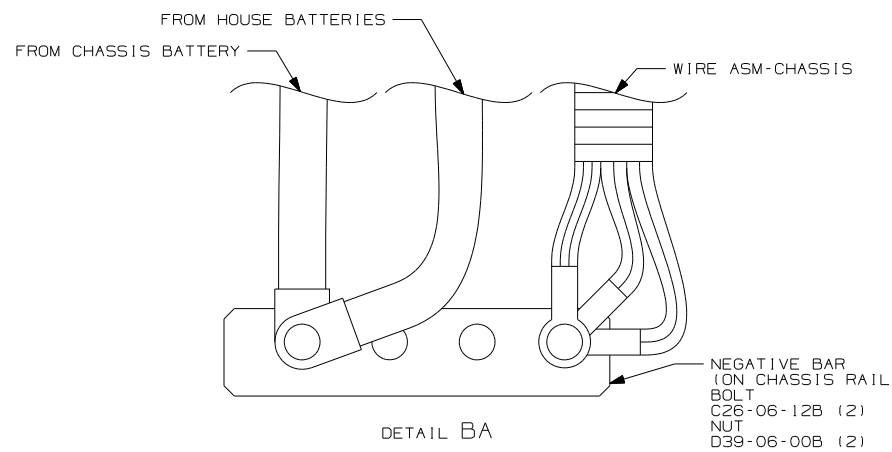
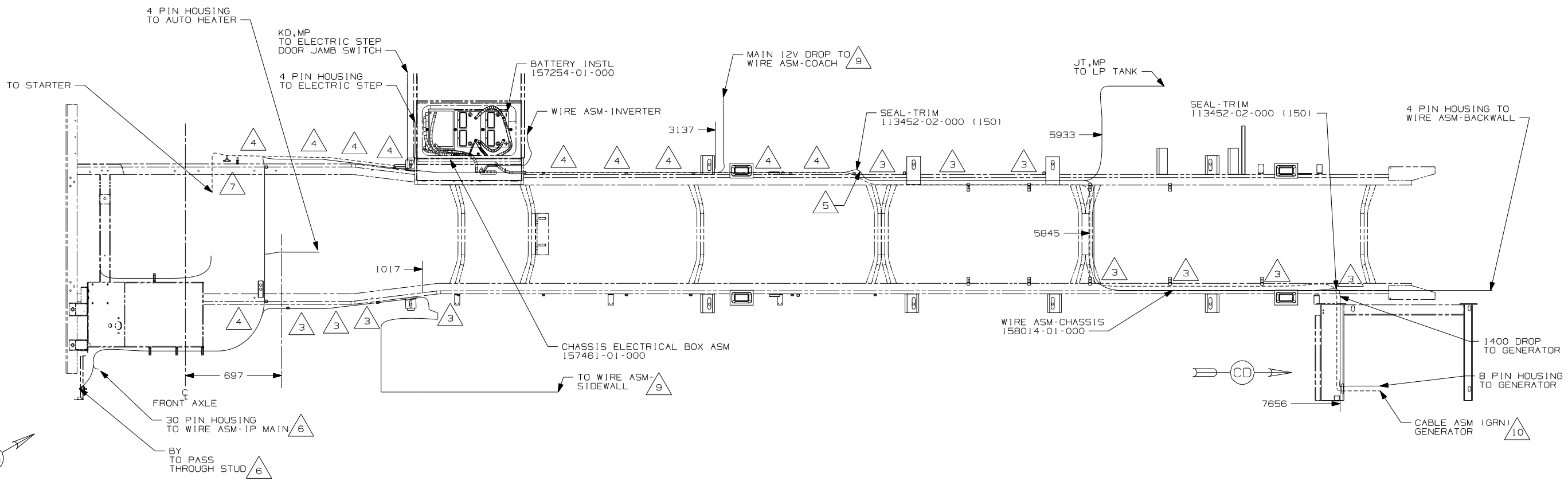


- 16L FORD 22,000#-22.5 AL WHL
- 265 CODES/STANDARDS-CSA/CMVSS
- 1B1 CODES/STANDARDS USA
- 1B1 265 16L

|                             |            |   |  |
|-----------------------------|------------|---|--|
| <b>WINNEBAGO</b>            |            | COPYRIGHT 2006<br>WINNEBAGO<br>INDUSTRIES, INC. |  |
| DFTR                        | ORIG. DATE | ALL DIMENSIONS ARE<br>IN MILLIMETERS            |  |
| CHKR                        |            | 07 F35L   |  |
| P.E.                        |            |   |  |
| M.E.                        | FIRST USED |   |  |
| DSNR                        |            |   |  |
| UNSPECIFIED TOLERANCES ARE: |            | MATERIAL:                                       |  |
| WHOLE DIM (X)               | :          |   |  |
| ONE-PLACE (X.X)             | :          |   |  |
| TWO-PLACE (X.XX)            | :          |   |  |
| ANGLE                       | :          |   |  |
| THIRD ANGLE PROJECTION      |            | DO NOT SCALE DRAWING                            |  |
| TITLE: WIRING INSTL-CHASSIS |            |   |  |
| SHEET 1 of 3                |            | PART NO 158514                                  |  |
| REF:                        |            | 1 6/30/2006                                     |  |

FOR ELECTRICAL TORQUE SPECIFICATIONS SEE DWG NO. 128783-01-000

FOR ELECTRICAL CALLOUTS SEE DWG NO. 121339-01-000



- 10 SEE BATTERY INSTL FOR ADDITIONAL INFORMATION.
- 9 SEE WIRE ASM-CHASSIS FOR ADDITIONAL INFORMATION.
- 8 COIL UP EXTRA WIRE AND TIE BACK TO LOOM.
- 7 SECURE SO WIRES DO NOT CONTACT EXHAUST.
- 6 SEE WIRING INSTL-FRONT END FOR ADDITIONAL INFORMATION.
- 5 ROUTE WIRES & CABLE INSIDE CHASSIS RAIL AT THIS POINT AND TO THE REAR.
- 4 CLAMP 83610-03-000, SCREW G39-08-12B.
- 3 CLAMP 83610-01-000, SCREW G39-08-12B.

2. SECURE CONDUIT 41953-09, -10, -11, -13, AND -14 OVER ALL WIRES IN CONTACT WITH SHARP EDGES.

1. LEGEND: ——— WINNEBAGO: - - - - - CABLE: - - - - - CHASSIS SUPPLIED WIRING.

NOTES:

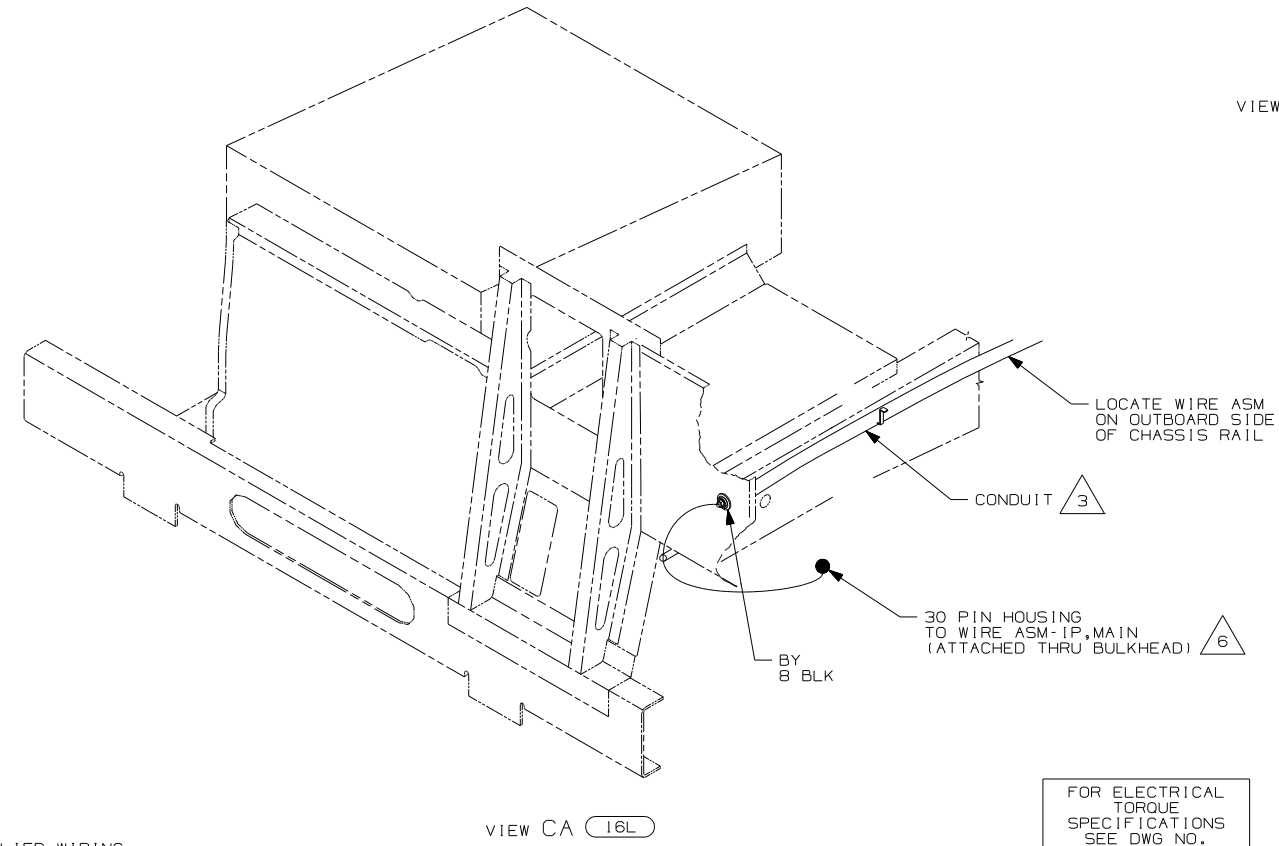
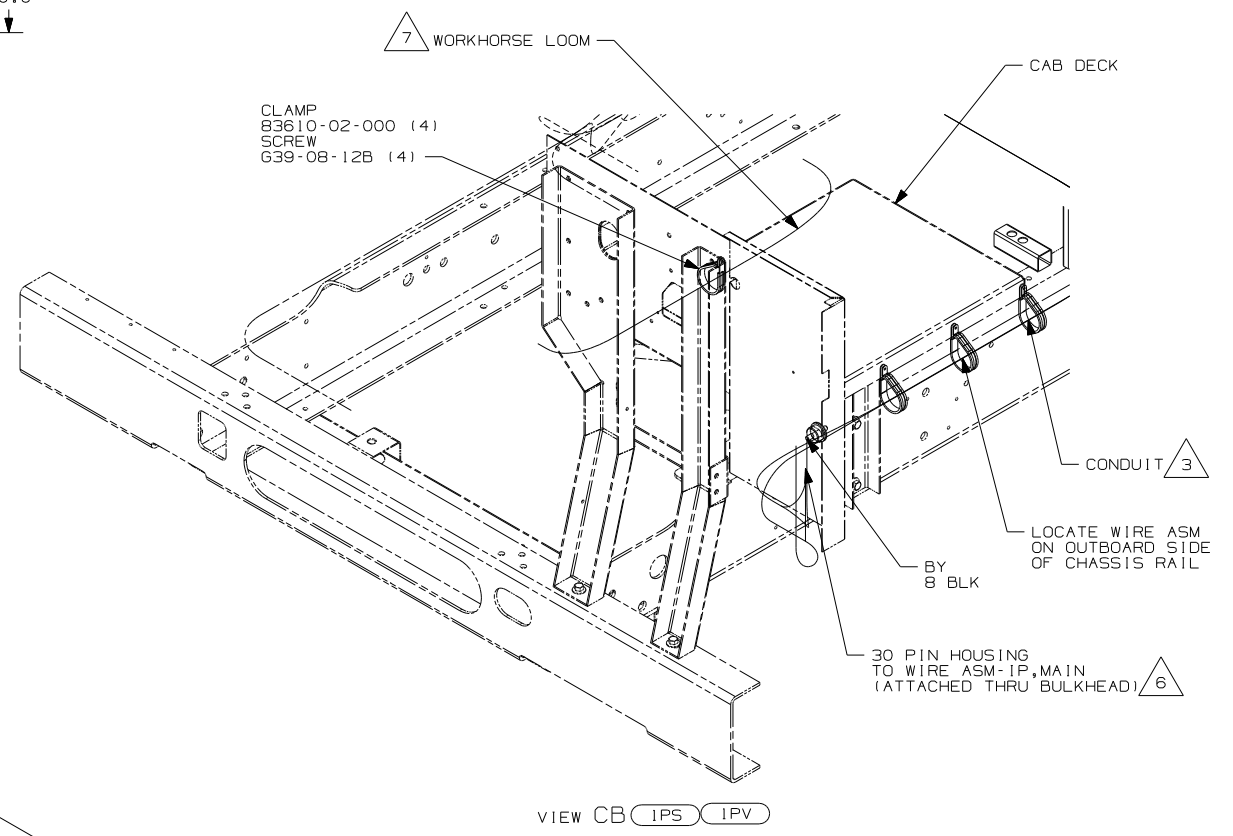
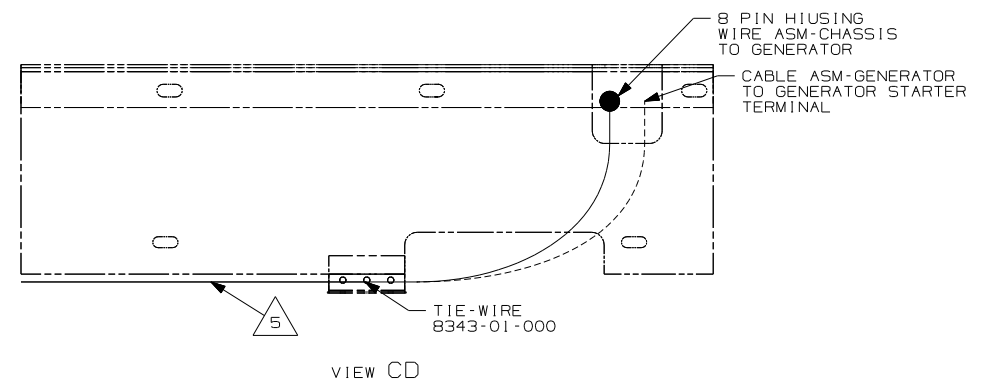
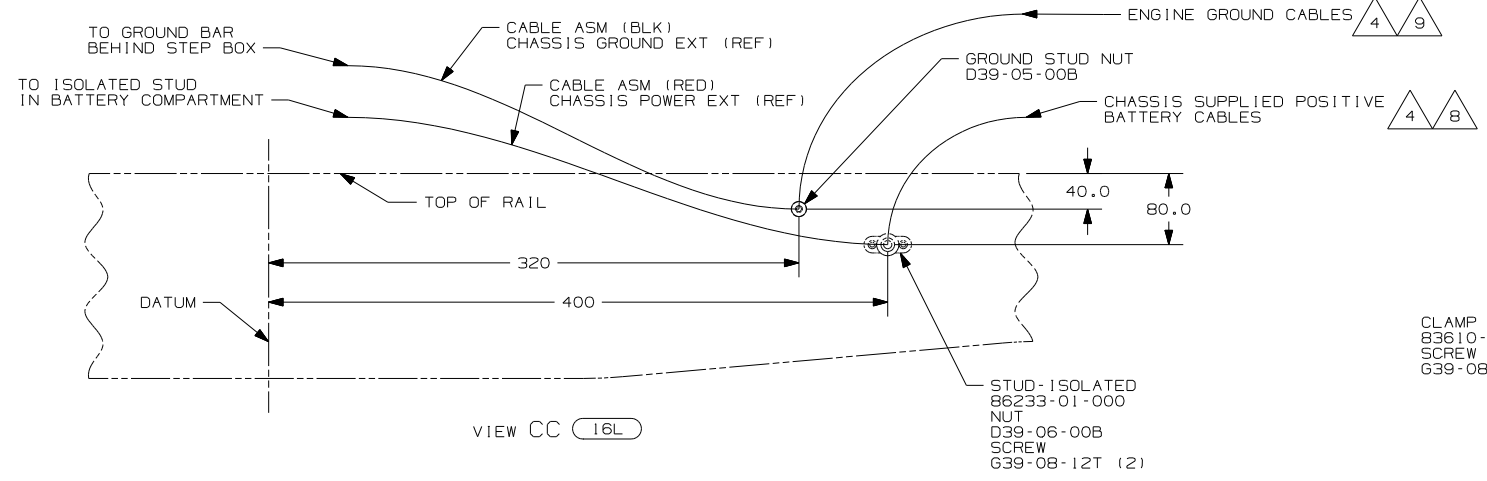
FOR ELECTRICAL TORQUE SPECIFICATIONS SEE DWG NO. 128783-01-000

FOR ELECTRICAL CALLOUTS SEE DWG NO. 121339-01-000

- IPV WORKHORSE 24,000#-22.5 TIRE
- IPS WORKHORSE 22,000#-22.5 TIRE
- 265 CODES/STANDARDS-CSA/CMVSS
- 1B1 CODES/STANDARDS USA

1B1 265 IPN

|            |                      |        |
|------------|----------------------|--------|
| FIRST USED | 07 F35L              |        |
| TITLE:     | DO NOT SCALE DRAWING |        |
|            | WIRING INSTL-CHASSIS |        |
| SHEET 2    | PART NO              | 158514 |
|            | REV                  |        |



- 9 CUT CHASSIS SUPPLIED BATTERY GROUND CABLE 700MM FROM BATTERY TERMINAL AND ADD TERMINAL 8348-01-000 TO CUT END.
- 8 CUT CHASSIS SUPPLIED POSITIVE BATTERY CABLE 150MM FROM BATTERY TERMINAL END, DISCARD TERMINAL END AND ADD TERMINAL 113738-01-000 TO CUT END. COIL EXCESS CABLE ALONG FRAME RAIL JUST BEHIND THE RADIATOR AND TIE UP WITH TIE-WIRE 8343-04-000.
- 7 CLAMP WORKHORSE ENGINE HARNESS TO CAB DECK TO PROTECT HARNESS FROM DAMAGE.
- 6 SEE WIRING INSTL-FRONT END FOR ADDITIONAL INFORMATION.
- 5 SECURE SO WIRES DO NOT CONTACT EXHAUST.
- 4 SUPPLIED WITH CHASSIS.
- 3 COVER WITH CONDUIT 41953-10-000 AND 41953-11-000 AS REQUIRED.

2. SECURE CONDUIT 41953-09, -10, -11, -13, AND -14 OVER ALL WIRES IN CONTACT WITH SHARP EDGES.

1. LEGEND: — WINNEBAGO; - - - - - CABLE; - - - - - CHASSIS SUPPLIED WIRING.

- 16L FORD 22,000#-22.5 AL WHL
- IPV WORKHORSE 24,000#-22.5 TIRE
- IPS WORKHORSE 22,000#-22.5 TIRE
- 265 CODES/STANDARDS-CSA/CMVSS
- 1B1 CODES/STANDARDS USA

|                      |                      |
|----------------------|----------------------|
| FIRST USED           | 07 F35L              |
| TITLE                | DO NOT SCALE DRAWING |
| WIRING INSTL-CHASSIS |                      |
| SHEET 3              | PART NO 158514 REV   |

FOR ELECTRICAL TORQUE SPECIFICATIONS SEE DWG NO. 128783-01-000

FOR ELECTRICAL CALLOUTS SEE DWG NO. 121339-01-000