



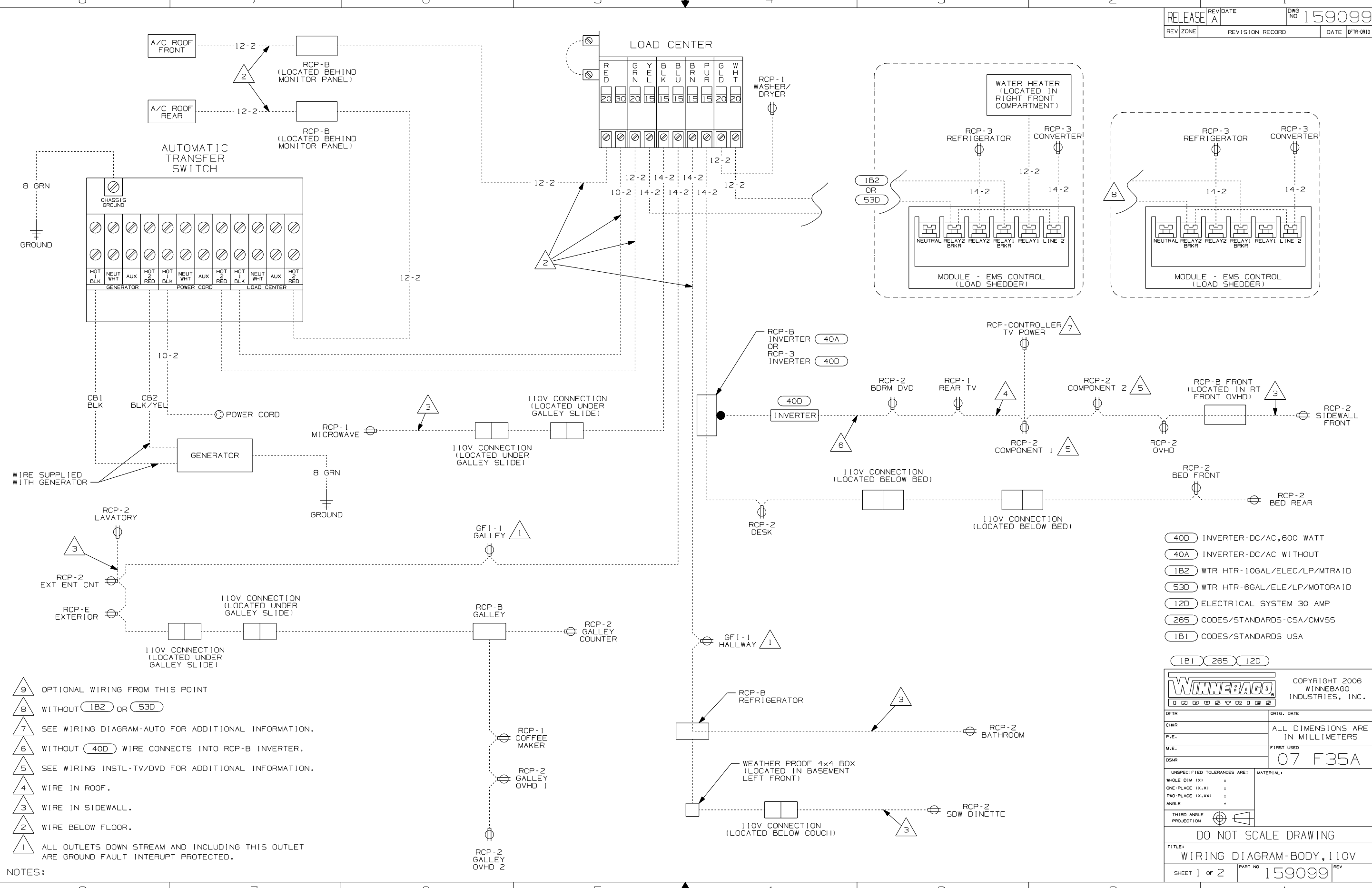
DANGER

Danger of electrical shock, burns or death. Always remove all power sources before attempting any repair, service or diagnostic work. Power can be present from shore power, generator, inverter or battery. All power sources must be disabled and secured before performing any service.



CAUTION

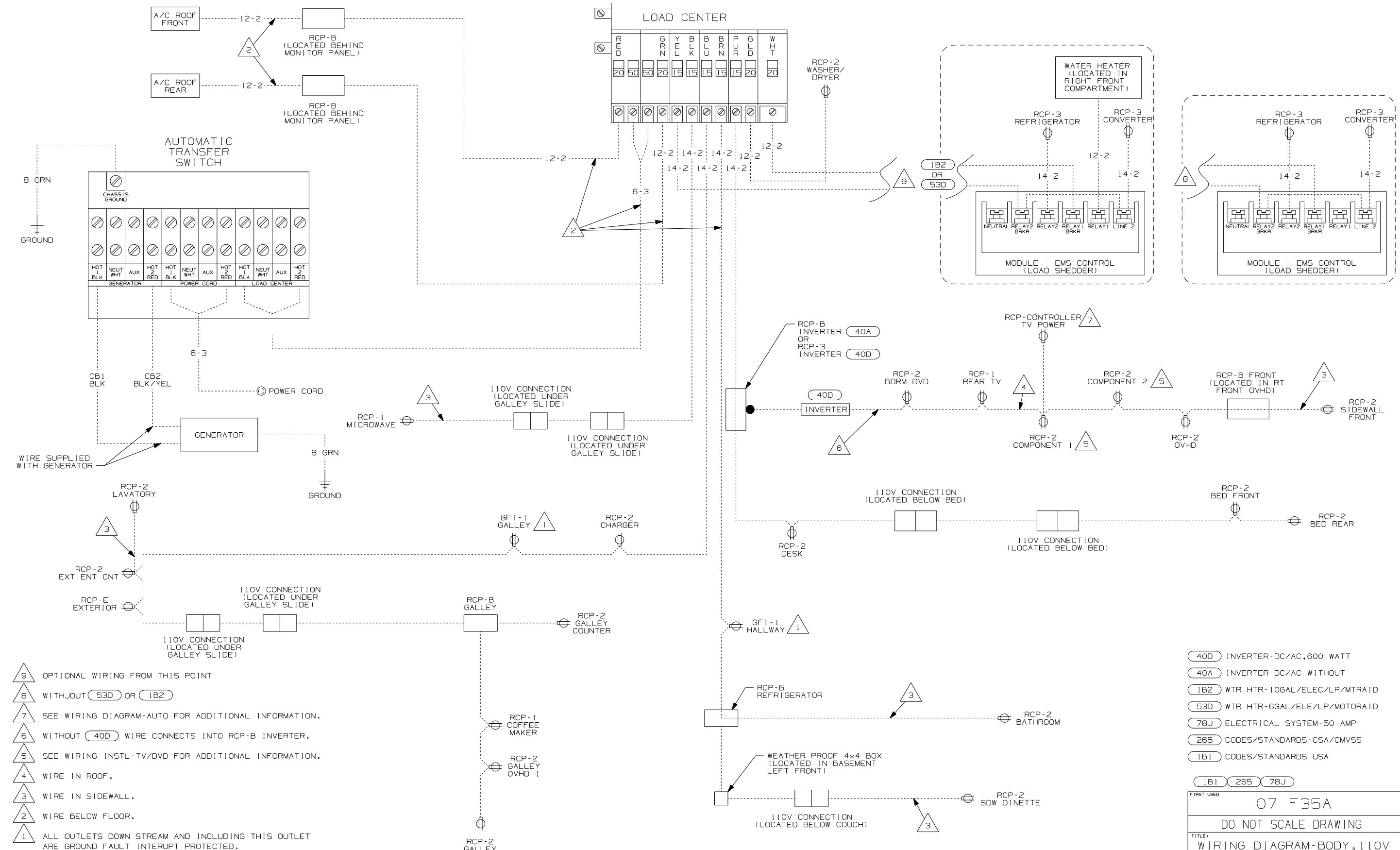
If you lack the skills, tools or equipment to perform diagnostic or repair work leave such work to an authorized Winnebago Industries dealer or other qualified shop.



- NOTES:
- 9 OPTIONAL WIRING FROM THIS POINT
 - 8 WITHOUT (1B2) OR (53D)
 - 7 SEE WIRING DIAGRAM-AUTO FOR ADDITIONAL INFORMATION.
 - 6 WITHOUT (40D) WIRE CONNECTS INTO RCP-B INVERTER.
 - 5 SEE WIRING INSTL-TV/DVD FOR ADDITIONAL INFORMATION.
 - 4 WIRE IN ROOF.
 - 3 WIRE IN SIDEWALL.
 - 2 WIRE BELOW FLOOR.
 - 1 ALL OUTLETS DOWN STREAM AND INCLUDING THIS OUTLET ARE GROUND FAULT INTERRUPT PROTECTED.

- (40D) INVERTER-DC/AC, 600 WATT
- (40A) INVERTER-DC/AC WITHOUT
- (1B2) WTR HTR-10GAL/ELEC/LP/MTR/ID
- (53D) WTR HTR-6GAL/ELE/LP/MOTORA/ID
- (12D) ELECTRICAL SYSTEM 30 AMP
- (265) CODES/STANDARDS-CSA/CMVSS
- (1B1) CODES/STANDARDS USA

| | | | |
|--|---------------|---|--|
| WINNEBAGO | | COPYRIGHT 2006 WINNEBAGO INDUSTRIES, INC. | |
| DFTR | ORIG. DATE | ALL DIMENSIONS ARE IN MILLIMETERS | |
| CHKR | | FIRST USED 07 F35A | |
| P.E. | | UNSPECIFIED TOLERANCES ARE: | |
| M.E. | | MATERIAL: | |
| DSNR | | THIRD ANGLE PROJECTION | |
| DO NOT SCALE DRAWING | | | |
| TITLE: WIRING DIAGRAM-BODY, 110V | | | |
| SHEET 1 OF 2 | PART NO | REV | |
| | 159099 | | |
| REF: | | 1 6/15/2006 | |



- NOTES:
- 9 OPTIONAL WIRING FROM THIS POINT
 - 8 WITHOUT (53D) OR (1B2)
 - 7 SEE WIRING DIAGRAM-AUTO FOR ADDITIONAL INFORMATION.
 - 6 WITHOUT (40D) WIRE CONNECTS INTO RCP-B INVERTER.
 - 5 SEE WIRING INSTL-TV/DVD FOR ADDITIONAL INFORMATION.
 - 4 WIRE IN ROOF.
 - 3 WIRE IN SIDEWALL.
 - 2 WIRE BELOW FLOOR.
 - 1 ALL OUTLETS DOWN STREAM AND INCLUDING THIS OUTLET ARE GROUND FAULT INTERRUPT PROTECTED.

- (40D) INVERTER-DC/AC,600 WATT
- (40A) INVERTER-DC/AC WITHOUT
- (1B2) WTR HTR-10GAL/ELEC/LP/MTRAI D
- (53D) WTR HTR-6GAL/ELE/LP/MOTORA I D
- (78J) ELECTRICAL SYSTEM-50 AMP
- (265) CODES/STANDARDS-CSA/CMVSS
- (1B1) CODES/STANDARDS USA

| | | |
|---------------------------|----------------------|--------|
| FIRST USED | 07 F35A | |
| TITLE | DO NOT SCALE DRAWING | |
| WIRING DIAGRAM-BODY, 110V | | |
| SHEET 2 | PART NO | 159099 |
| REV | | |