

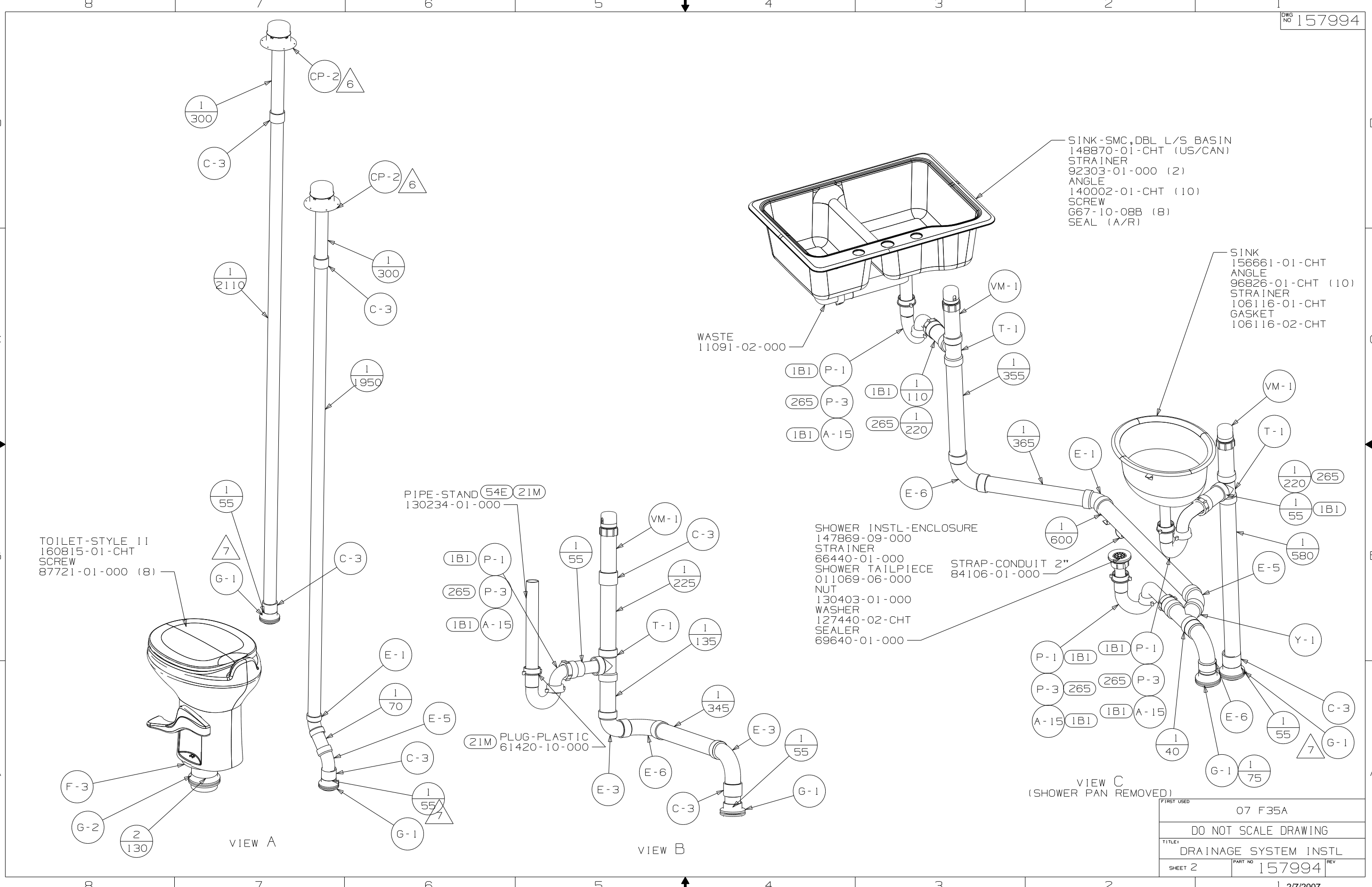
FRONT OF VEHICLE

- (54E) WASHER/DRYER
- (21M) WASHER/DRYER PREP
- (265) CODES/STANDARDS-CSA/CMVSS
- (1B1) CODES/STANDARDS-USA

- NOTES:
- 7 SECURE VENT TUBES TO FLOOR WITH CLAMP 62401-02-000 (2), SCREW G67-10-12B (2), BRACKET 136878-01-CHT (2).
 - 6 VENT PIPE MUST PROJECT 51 MIN AND 64 MAX ABOVE ROOF FOR PROPER FIT AND FUNCTION.
 5. SEAL AROUND SHOWER WITH SILICONE.
 4. ALL EXTERIOR OPENINGS AROUND PIPE TO BE SEALED WITH 131264-03-000.
 3. ALL PIPE AND FITTINGS TO BE ASSEMBLED WITH SOLVENT 4020-01-000 (USA), 4020-02-000 (CAN)
 2. SLOPE OF TRAP ARM MUST BE 6 PER 305 mm.
 1. SLOPE OF HORIZONTAL PIPING TO BE MIN 3 PER 305 mm.

(X-X)
FOR DRAINAGE CALLOUTS SEE DWG NO 116229-01-000

WINNEBAGO		COPYRIGHT 2007 WINNEBAGO INDUSTRIES, INC.	
DFT	ORIG. DATE	ALL DIMENSIONS ARE IN MILLIMETERS	
CHKR		FIRST USED	
P.E.		07 F35A	
M.E.		UNSPECIFIED TOLERANCES ARE:	
DSNR		MATERIAL:	
		WHOLE DIM (X)	: 5
		ONE-PLACE (X.X)	:
		TWO-PLACE (X.XX)	:
		ANGLE	:
		THIRD ANGLE PROJECTION	
DO NOT SCALE DRAWING			
TITLE: DRAINAGE SYSTEM INSTL			
SHEET 1 OF 3	PART NO	REV	
	157994		
REF1	1 2/7/2007		



FIRST USED	07 F35A	
DO NOT SCALE DRAWING		
TITLE	DRAINAGE SYSTEM INSTL	
SHEET 2	PART NO	157994
REV		

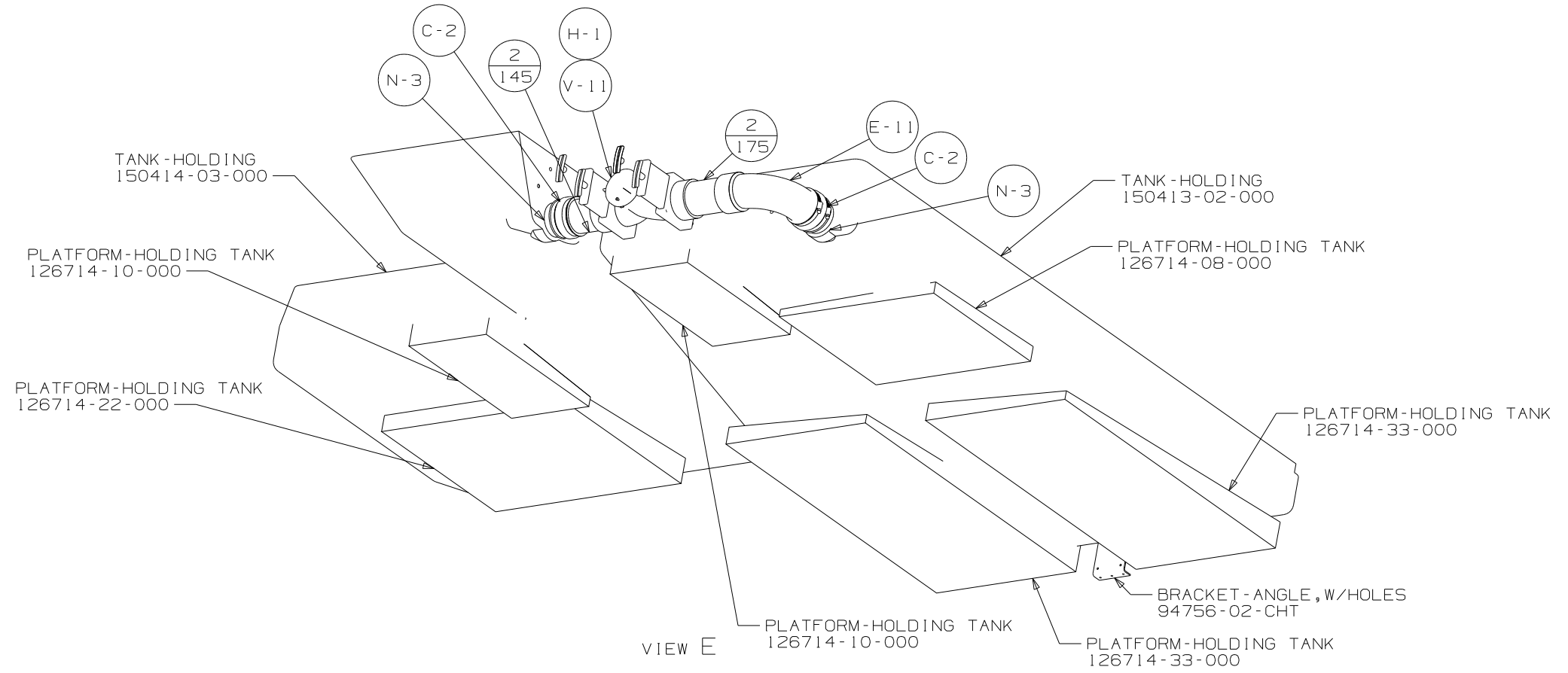
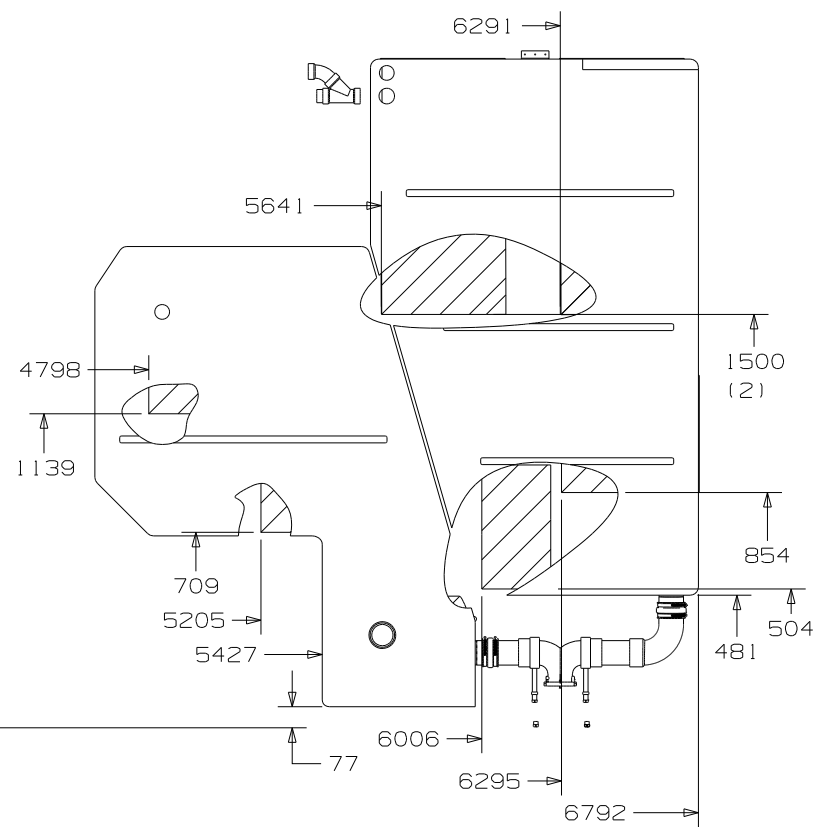
ϕ FRONT AXLE

ϕ VEHICLE

1222

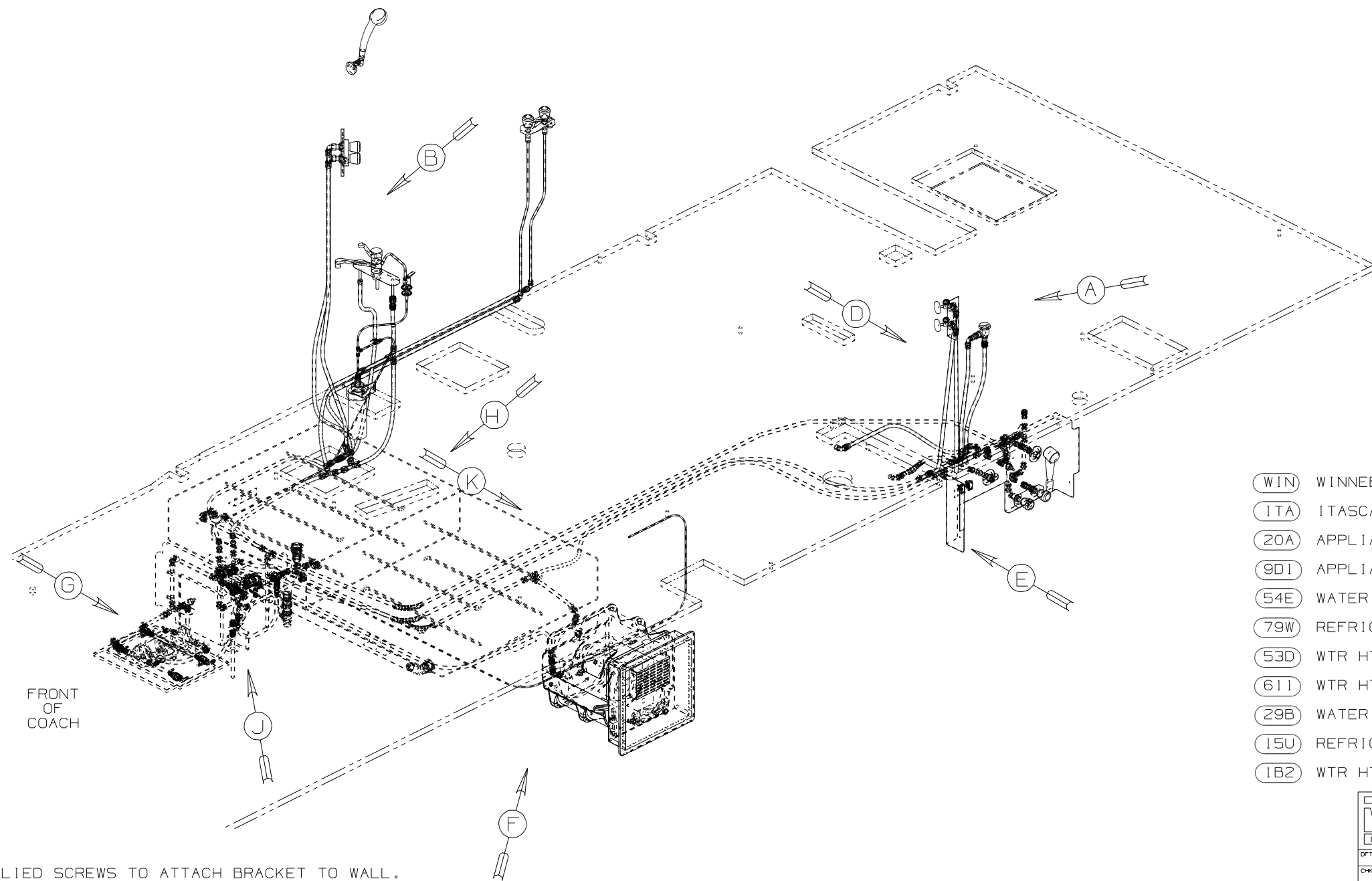
700

VIEW D



VIEW E

FIRST USED	07 F35A	
TITLE	DO NOT SCALE DRAWING	
	DRAINAGE SYSTEM INSTL	
SHEET 3	PART NO	157994
	REV	



- (WIN) WINNEBAGO ONLY
- (ITA) ITASCA ONLY
- (20A) APPLIANCE PKG-STAINLESS S W/O
- (9D1) APPLIANCE PKG-STAINLESS STEEL
- (54E) WATER SYST WINTERIZATIO PKG
- (79W) REFRIGERATOR-4 DOOR
- (53D) WTR HTR-6GAL/ELE/LP/MOTORAID
- (611) WTR HTR-AUX AUTO/MOTORAID
- (29B) WATER PURIFIER
- (15U) REFRIGERATOR/FRZR W/ICEMAKER
- (1B2) WTR HTR-10 GAL/ELEC/LP/MTRAID

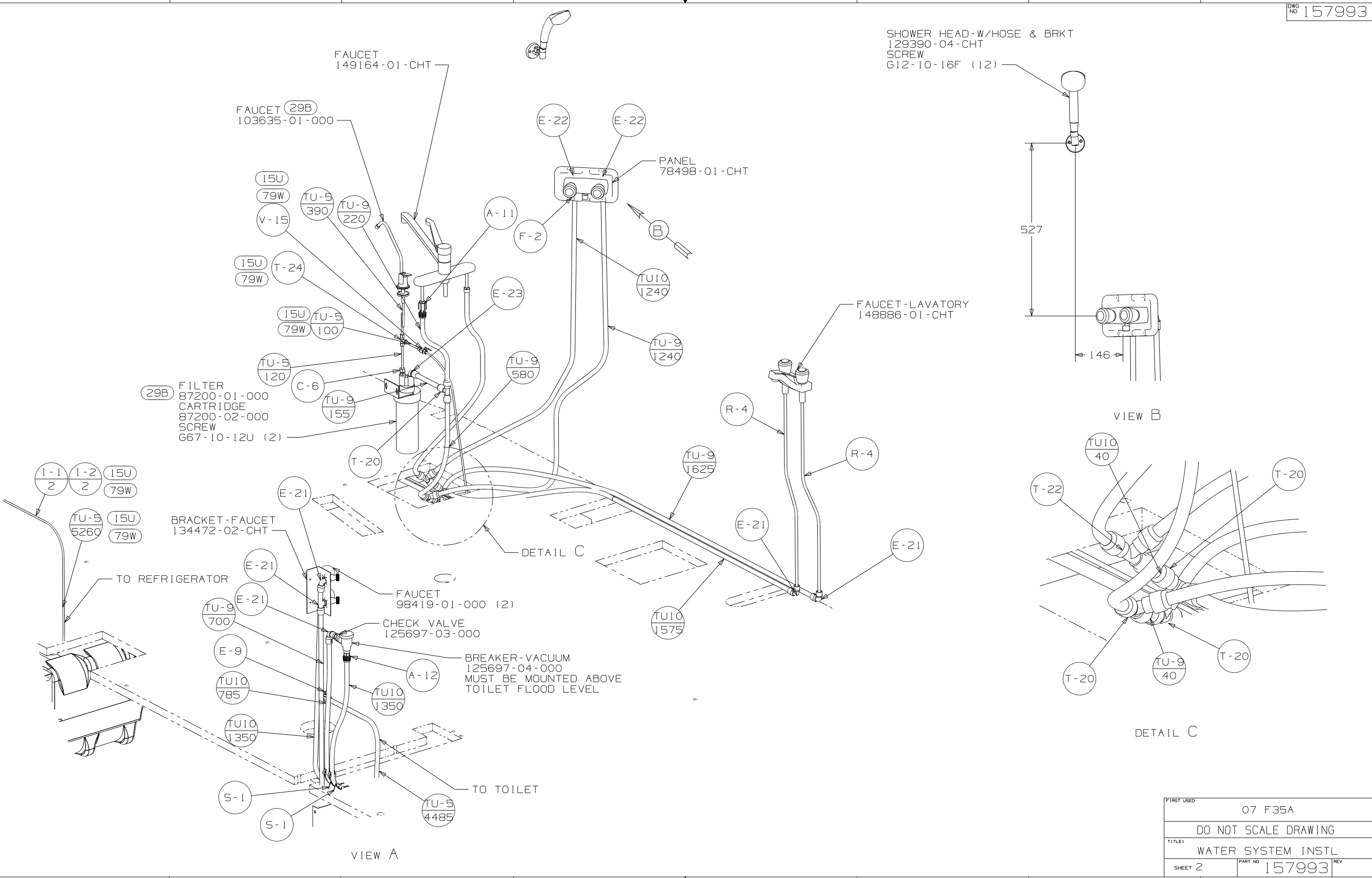
- △ USED IN PLACE OF SUPPLIED SCREWS TO ATTACH BRACKET TO WALL.
- ⑥ ADD TEFLON TAPE 10405-01-000.
- ④ ADD TEFLON TAPE 10405-02-000.
- 3. ALL TUBING TO BE SECURED AT 1200 INTERVALS MAXIMUM WITH CLAMP 10495-01-000 AND SCREW G67-10-12B OR EQUIVALENT.
- 2. TUBING TO BE INSTALLED WITH SUFFICIENT SLOPE TO PROVIDE DRAINAGE TO NEAREST VALVE.
- 1. PLASTIC FITTINGS TO BE SEALED WITH SEALANT 84456-01-000.

NOTES:

WINNEBAGO		COPYRIGHT 2007 WINNEBAGO INDUSTRIES, INC.	
DFT	ORIG. DATE		
CHKR	ALL DIMENSIONS ARE IN MILLIMETERS		
P.E.			
M.E.	FIRST USED		
DSNR	07 F35A		
UNSPECIFIED TOLERANCES ARE:		MATERIAL:	
WHOLE DIM (X)	: 7		
ONE-PLACE (X.X)	:		
TWO-PLACE (X.XX)	:		
ANGLE	:		
THIRD ANGLE PROJECTION			
DO NOT SCALE DRAWING			
TITLE: WATER SYSTEM INSTL			
SHEET 1 OF 4	PART NO	157993	
REF:	1 5/15/2007		

(X-X)
FOR
WATER
CALLOUTS
SEE DWG NO
116230-01-000

SHOWER HEAD-W/HOSE & BRKT
129390-04-CHT
SCREW
G12-10-16F (12)



29B FILTER
87200-01-000
CARTRIDGE
87200-02-000
SCREW
G67-10-12U (2)

BRACKET-FAUCET
134472-02-CHT

FAUCET
98419-01-000 (2)

CHECK VALVE
125697-03-000

BREAKER-VACUUM
125697-04-000
MUST BE MOUNTED ABOVE
TOILET FLOOD LEVEL

527

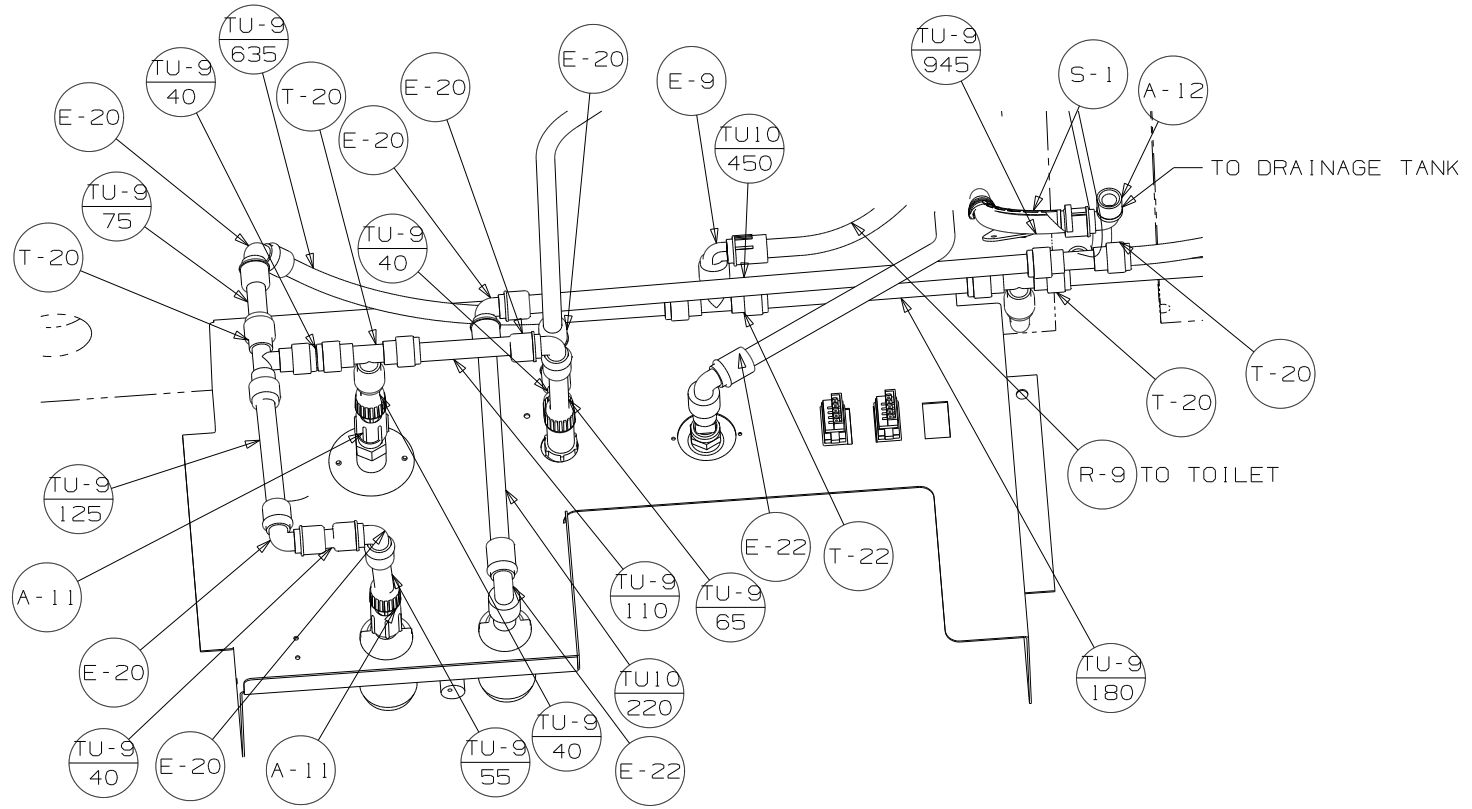
146

VIEW B

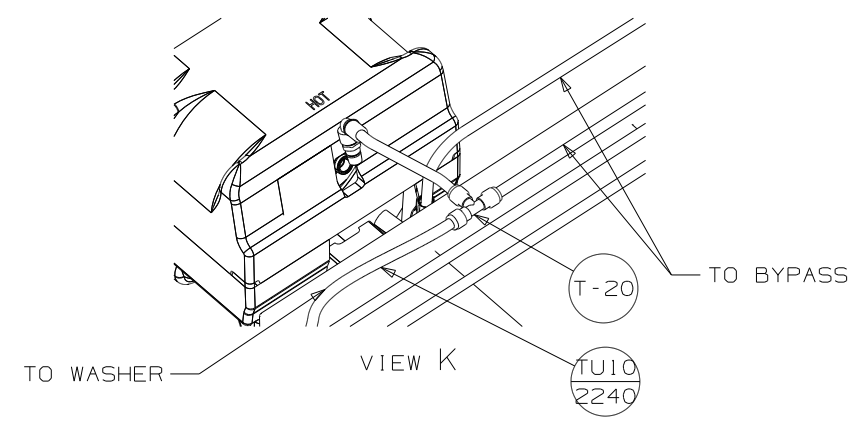
DETAIL C

VIEW A

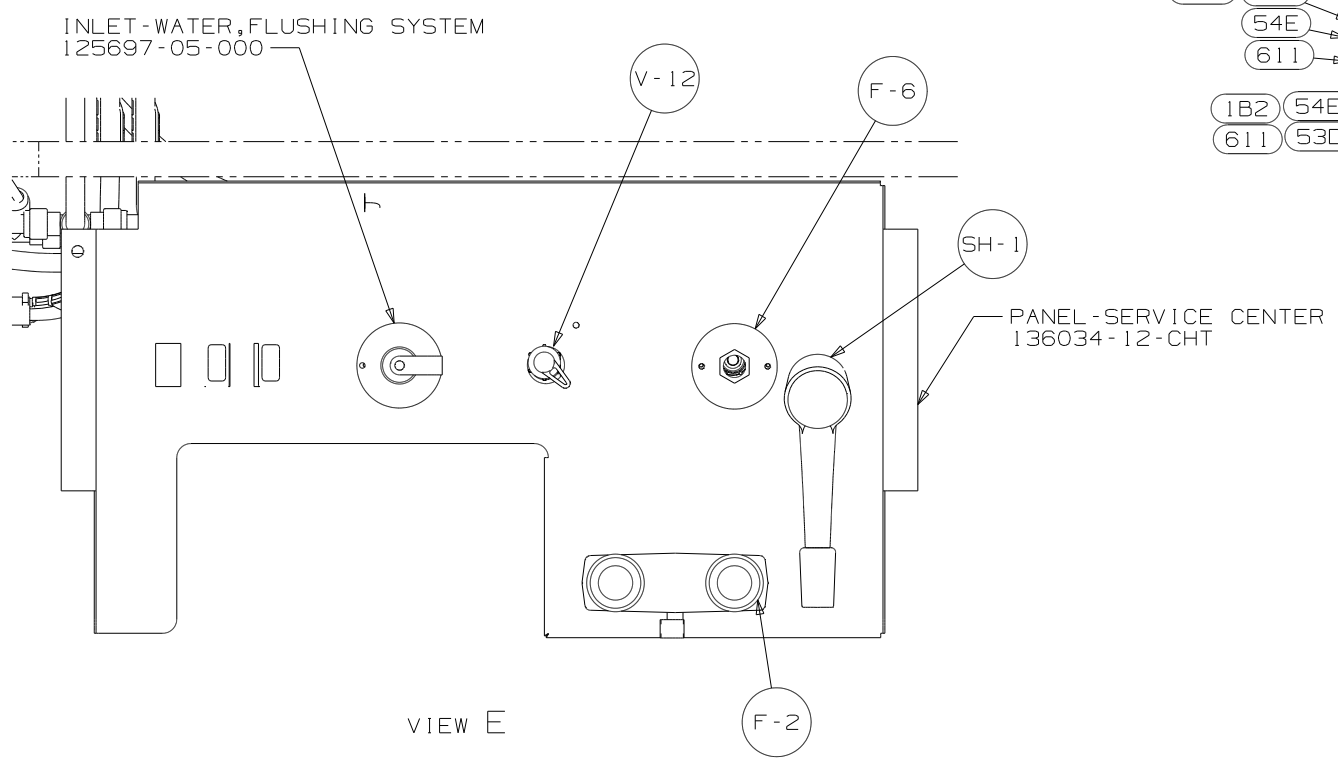
FIRST USED	07 F35A		
TITLE:	DO NOT SCALE DRAWING		
	WATER SYSTEM INSTL		
SHEET 2	PART NO	157993	REV



VIEW D

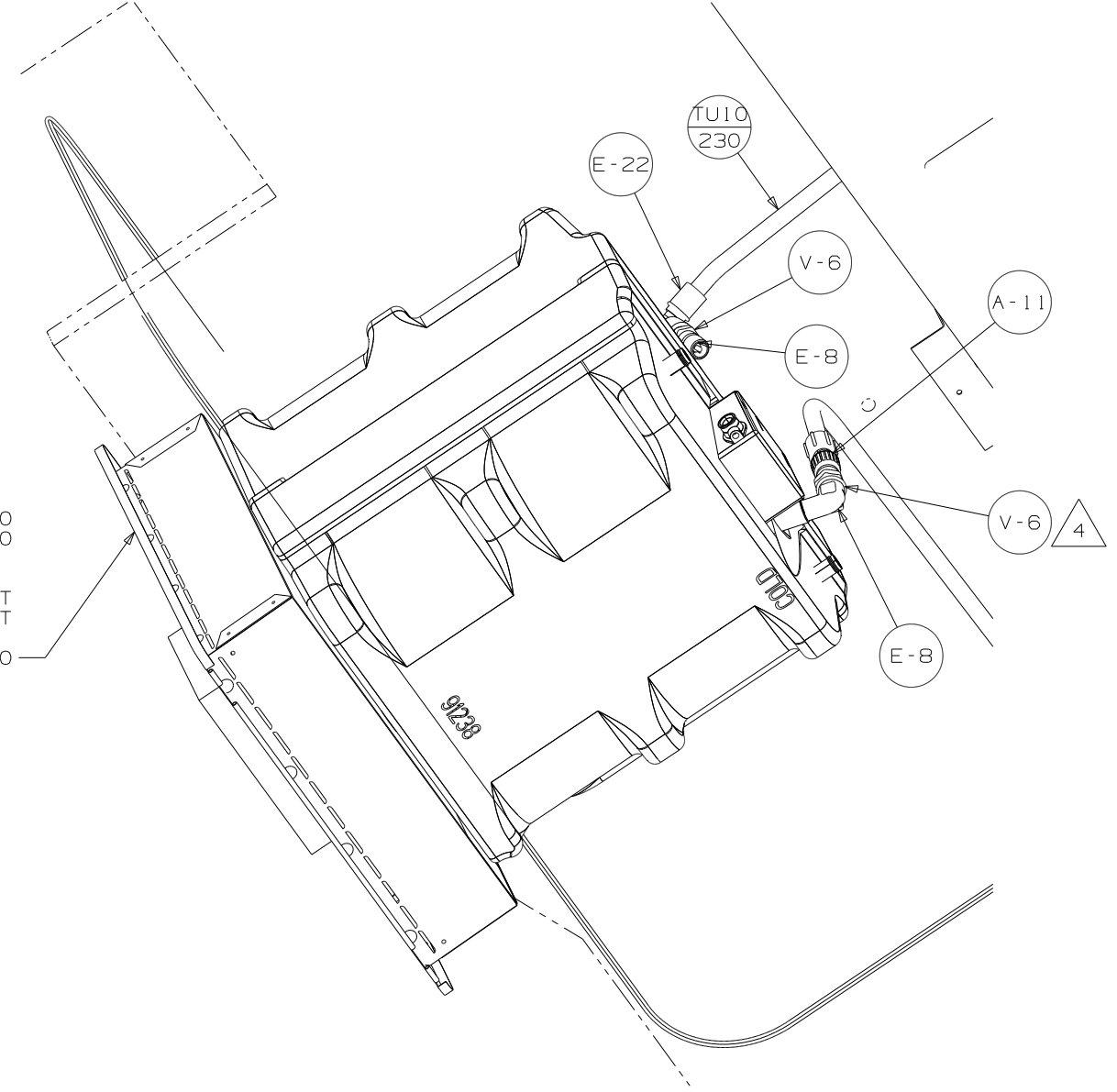


VIEW K



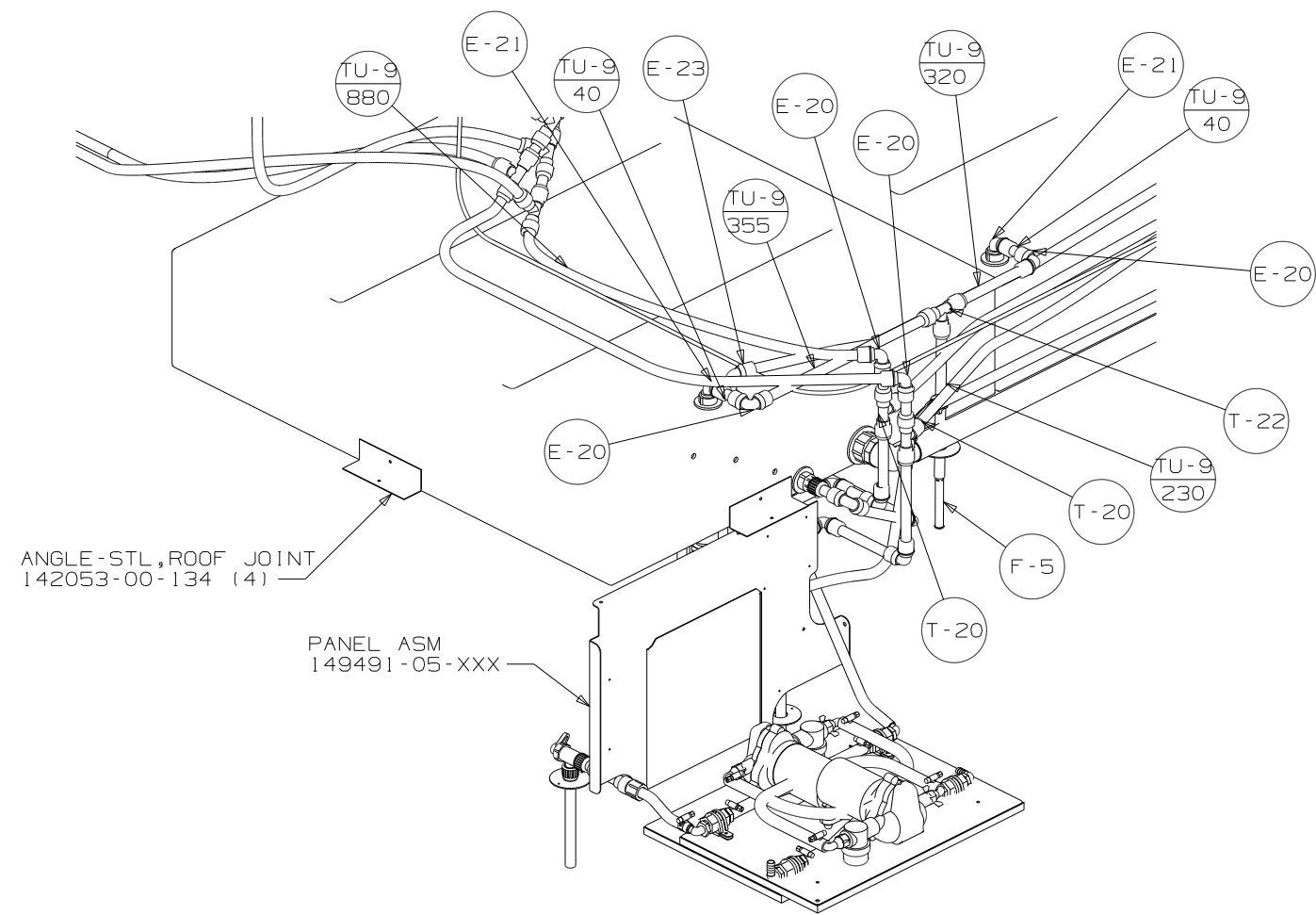
VIEW E

- (1B2) (54E) WATER HEATER
- (54E) 145541-01-000
- (54E) 145541-02-000
- (611) 51393-01-000
- DOOR
- (1B2) (54E) 125420-03-CHT
- (611) (53D) 125420-04-CHT
- BUMPER INSTL
- 146507-01-000

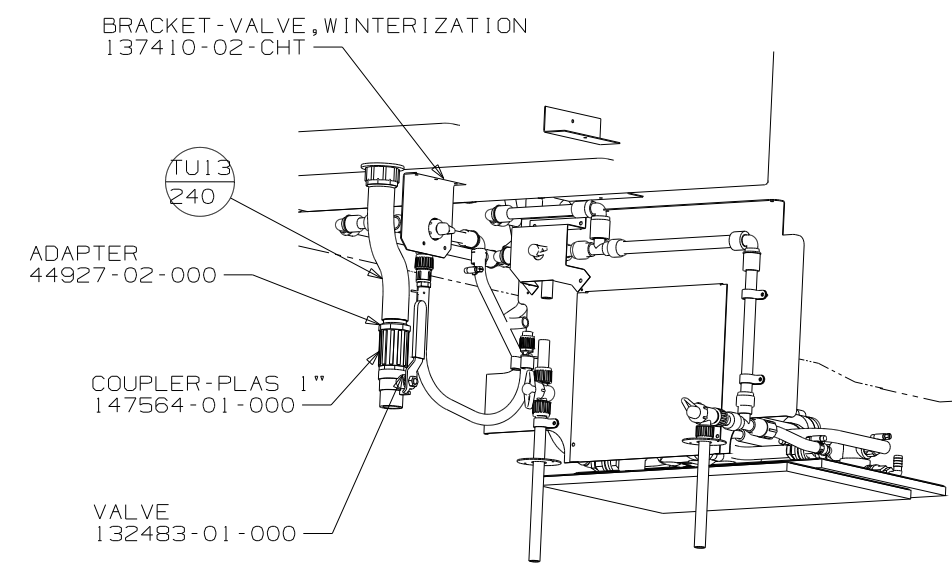


VIEW F

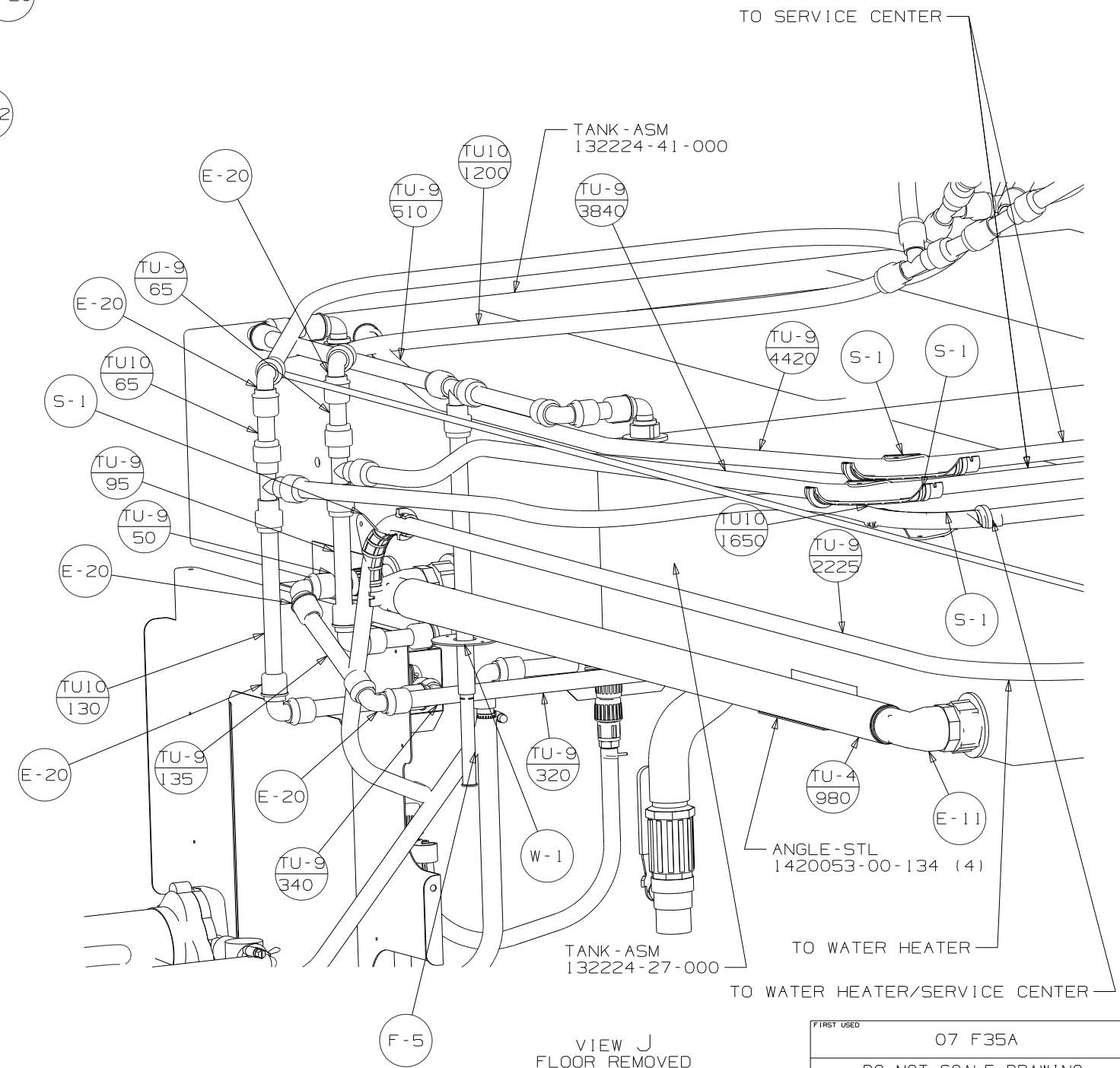
FIRST USED	07 F35A	
TITLE	DO NOT SCALE DRAWING	
SHEET 3	PART NO	157993
	REV	1



VIEW G
FLOOR REMOVED



VIEW H



VIEW J
FLOOR REMOVED

FIRST USED	07 F35A
TITLE:	DO NOT SCALE DRAWING
SHEET 4	PART NO 157993 REV
1 5/15/2007	