



**DANGER**

**Danger of electrical shock, burns or death.** Always remove all power sources before attempting any repair, service or diagnostic work. Power can be present from shore power, generator, inverter or battery. All power sources must be disabled and secured before performing any service.



**CAUTION**

If you lack the skills, tools or equipment to perform diagnostic or repair work leave such work to an authorized Winnebago Industries dealer or other qualified shop.

	8	7	6	5
		F33V	F35A	F35L
BLK	14-UL	136131-06-032	136131-06-060	136131-06-032
	14-CA	136134-06-032	136134-06-060	136134-06-032
BLU	14-UL	136131-02-076	136131-02-180	136131-02-080
	14-CA	136134-02-076	136134-02-180	136134-02-135
BRN	14-UL	136131-03-095	136131-03-070	136131-03-095
	14-CA	136134-03-095	136134-03-070	136134-03-045
GLD	12-UL	N/A	136135-10-065	136135-10-090
	12-CA	N/A	136136-10-065	136136-10-068
GRN	12-UL	136135-08-114	136135-08-085	136135-08-114
	12-CA	136136-08-114	136136-08-085	136136-08-114
	12-UL	136135-08-090	136135-08-067	136135-08-090
	12-CA	136136-08-090	136136-08-067	136136-08-060
GRN 2	12-UL	136135-14-054	136135-14-054	136135-14-054
	12-CA	136136-14-054	136136-14-054	136136-14-054
PUR	14-UL	136131-04-180	136131-04-160	136131-04-130
	14-CA	136134-04-180	136134-04-160	136134-04-140
RED	12-UL	136135-07-114	136135-07-085	136135-07-114
	12-CA	136136-07-114	136136-07-085	136136-07-114
WHT	12-UL	136135-09-075	136135-09-050	136135-09-065
	12-CA	136136-09-075	136136-09-050	136136-09-040
YEL	14-UL	136131-05-032	136131-05-054	136131-05-032
	14-CA	136134-05-032	136134-05-054	136134-05-052
YEL 2	14-UL	136131-13-043	136131-13-050	136131-13-043
	14-CA	136134-13-043	136134-13-050	136134-13-055
MAIN	10-UL	136137-01-090	136137-01-067	136137-01-090
	10-CA	136138-01-090	136138-01-067	136138-01-090
	6-3 UL	136139-01-090	136139-01-067	136139-01-090
	6-3 CA	136140-01-090	136140-01-067	136140-01-060
MAIN GROUND		136145-01-030	136145-01-045	136145-01-030
ATS GROUND		136145-01-061	136145-01-048	136145-01-064
CONDUIT ASM-CENTRAL A/C		151704-01-015	151704-01-015	151704-01-015

- 
- 
- 
- 
- 
- 
- 
- 
- 
- 
- 
- 
- 
- 

- ELECTRICAL SYSTEM 30 AMP
- ELECTRICAL SYSTEM-50 AMP
- WASHER/DRYER
- WTR HTR-6GAL/ELE/LP/MOTORA ID
- WASHER/DRYER PREP
- WTR HTR-10GAL/ELEC/LP/MTRA ID
- CODES/STANDARDS-CSA/CMVSS
- CODES/STANDARDS USA
- 

SEE DETAIL EA  
 NOTES:

**WINNEBAGO** COPYRIGHT 2006 WINNEBAGO INDUSTRIES, INC.

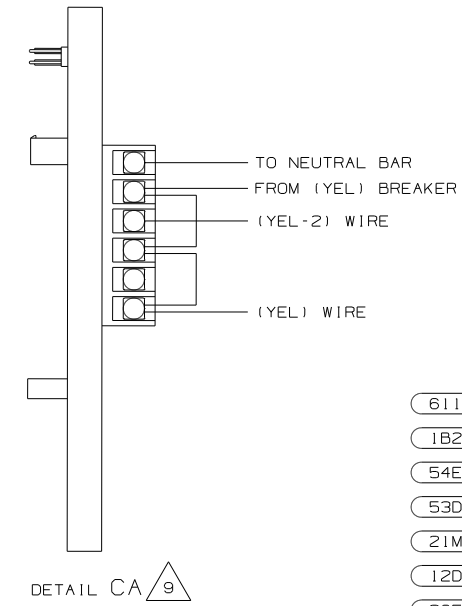
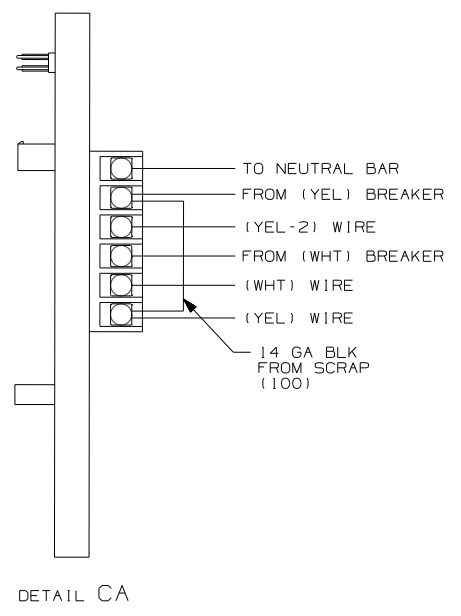
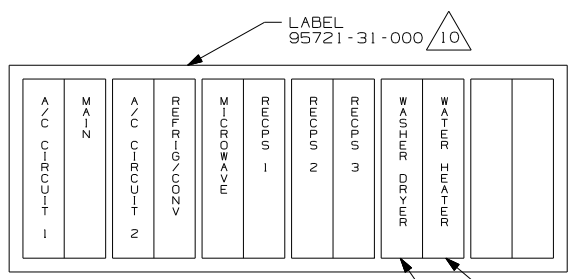
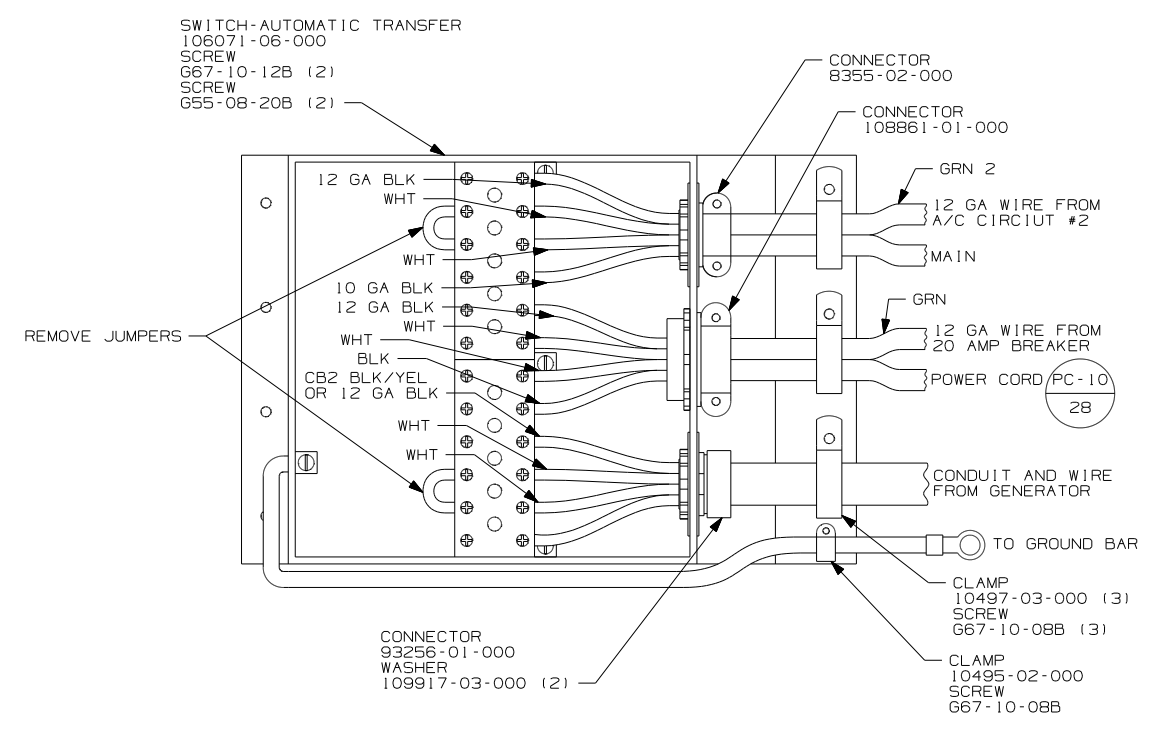
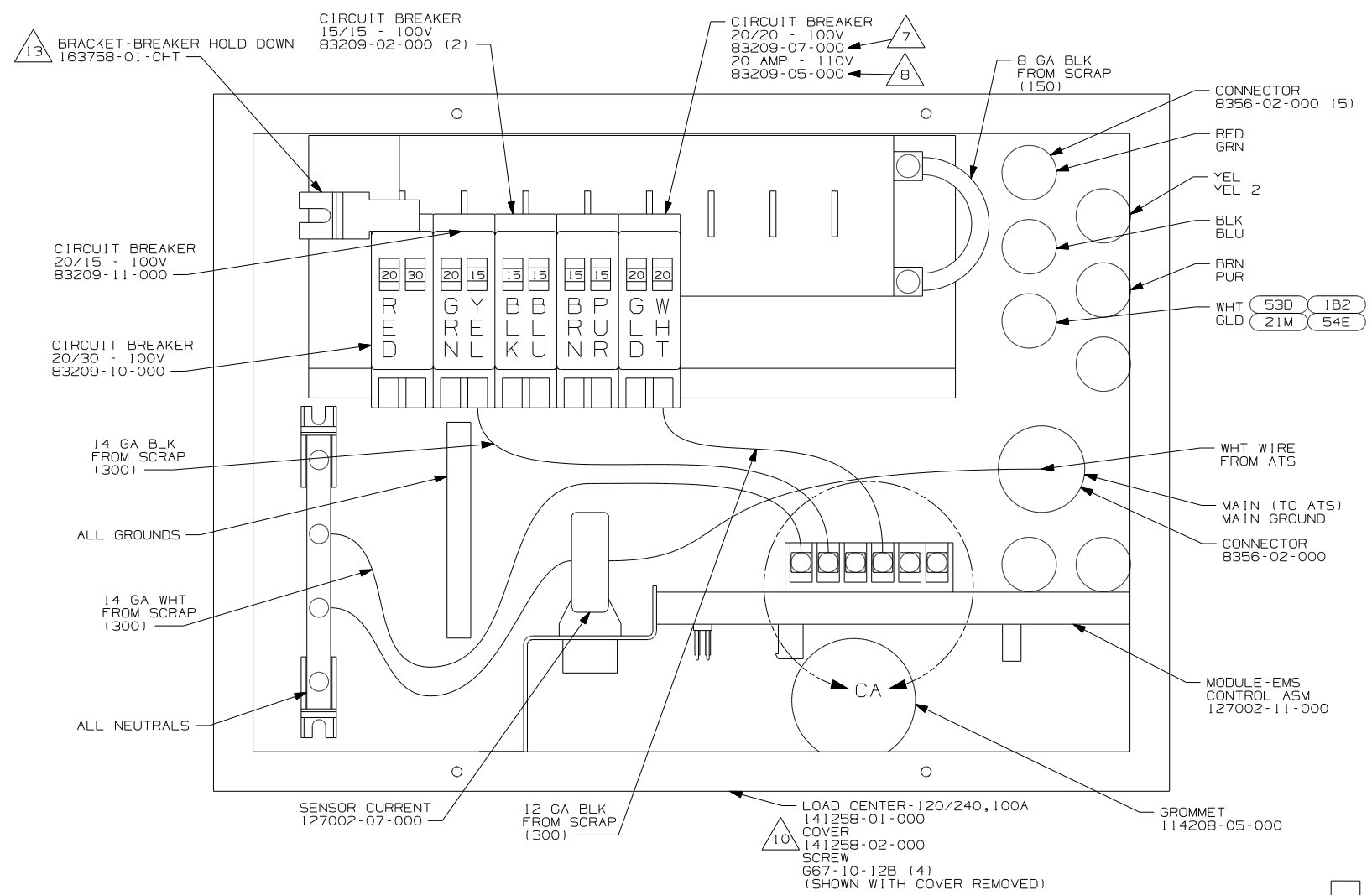
DFTR	ORIG. DATE
CHKR	ALL DIMENSIONS ARE IN MILLIMETERS
P.E.	
M.E.	FIRST USED
DSNR	07 F-SERIES
UNSPECIFIED TOLERANCES ARE:	MATERIAL:
WHOLE DIM (X) :	
ONE-PLACE (X.X) :	
TWO-PLACE (X.XX) :	
ANGLE :	
THIRD ANGLE PROJECTION	
DO NOT SCALE DRAWING	
TITLE: LOAD CENTER/ATS ASM	
SHEET 1 OF 5	PART NO 156338 REV
REF:	1 5/15/2007

	8	7	6	5	4
		F33V	F35A	F35L	F38J
THROW IN WIRE #1	14-UL	136131-03-060	136131-03-055	136131-03-060	136131-03-055
	14-CA	136134-03-060	136134-03-055	136134-03-060	136134-03-055
THROW IN WIRE #2	14-UL	136131-12-150	136131-02-026	136131-12-080	136131-12-165
	14-CA	136134-12-150	136134-02-026	136134-12-080	136134-12-165
THROW IN WIRE #3	14-UL	136131-12-006  (40D)	136131-02-021	136131-12-006  (40D)	136131-03-006
	14-CA	136134-12-006  (40D)	136134-02-021	136134-12-006  (40D)	136134-03-006
THROW IN WIRE #4	14-UL	N/A	136131-12-075	136131-04-065	136131-12-030
	14-CA	N/A	136134-12-075	136134-04-065	136134-12-030
THROW IN WIRE #5	14-UL	N/A	136131-12-006  (40D)	N/A	136131-03-075
	14-CA	N/A	136134-12-006  (40D)	N/A	136134-03-075
THROW IN WIRE #6	14-UL	----	----	----	136131-12-008  (40D)
	14-CA	----	----	----	136134-12-008  (40D)
SLIDEOUT WIRE #1		136151-03-028	136151-03-030	136151-03-028	136151-03-040
SLIDEOUT WIRE #2		136151-04-017	136151-04-017	136151-04-017	136151-04-017
SLIDEOUT WIRE #3		N/A	136151-06-020	N/A	136151-06-040
SLIDEOUT WIRE #4		N/A	136151-02-020	N/A	136151-12-025
SLIDEOUT WIRE #5		N/A	----	N/A	136151-03-025

- NOTES:
- SEE DETAIL EF
  - SEE DETAIL EE
  - SEE DETAIL ED
  - SEE DETAIL EC
  - SEE DETAIL EB
  - SEE DETAIL EA

- ELECTRICAL SYSTEM-50 AMP
- INVERTER-DC/AC,600 WATT
- ELECTRICAL SYSTEM 30 AMP
- CODES/STANDARDS-CSA/CMVSS
- CODES/STANDARDS USA

FIRST USED	07 F-SERIES
TITLE:	DO NOT SCALE DRAWING
TITLE:	LOAD CENTER/ATS ASM
SHEET 2	PART NO 156338 REV



- 13 LOOSEN LEFT BUSS BAR MOUNTING SCREW, INSERT BRACKET-BREAKER HOLD DOWN UNDER SCREW, ORIENTATE BRACKET TOWARD MAIN BREAKER AS SHOWN AND TIGHTEN SCREW.
- 12 BLACKEN OUT WASHER DRYER WITH BLACK MARKER ON 33V ONLY.
- 11 BLACKEN OUT WATER HEATER WITH BLACK MARKER WITH (611)
- 10 INSTALLED BY ASSEMBLY LINE.
- 9 WITHOUT (53D) OR (1B2)
- 8 WITH (21M) & (611) OR (54E) & (611) ONLY.
- 7 WITH (21M) OR (54E) & (1B2) OR (53D)
- 6. REMOVE 400MM FROM OUTER JACKET ON ALL WIRES ENTERING LOAD CENTER AND TRIM INDIVIDUAL CONDUCTORS AS REQUIRED TO MAKE INTERNAL CONNECTIONS
- 5. ATTACH WIRES TO BACKSIDE OF LOAD CENTER, USE EXISTING HOLES AND TIE-WIRE 116673-01-000.
- 4. ALL 110V STRANDED WIRE W/O TERMINALS TO BE STRIPPED 10MM AND SOLDER DIPPED.
- 3. ALL WIRES TO BE CLAMPED WITHIN 200MM OF ATS.
- 2. GROUND WIRES ARE NOT SHOWN FOR CLARITY.
- 1. ALL GROUND WIRES TO BE COVERED WITH TUBING 8041-02-000.

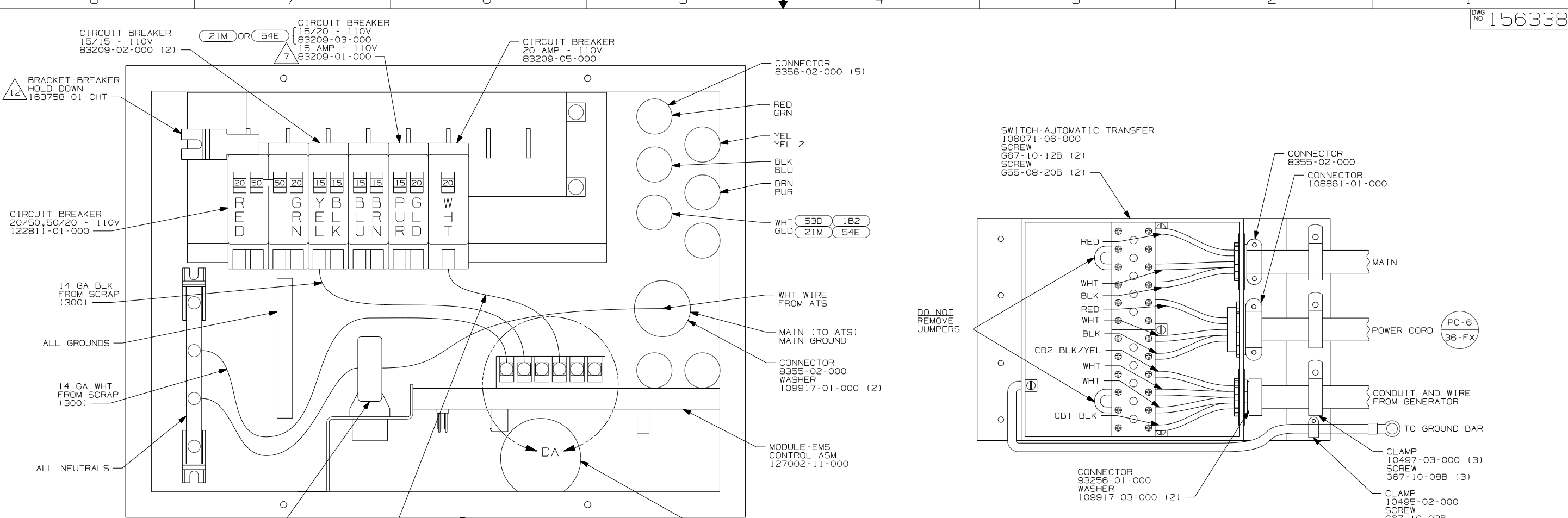
NOTES:

FOR ELECTRICAL TORQUE SPECIFICATIONS SEE DWG NO. 128783-01-000

(X-X) FOR ELECTRICAL CALLOUTS SEE DWG NO. 121339-01-000

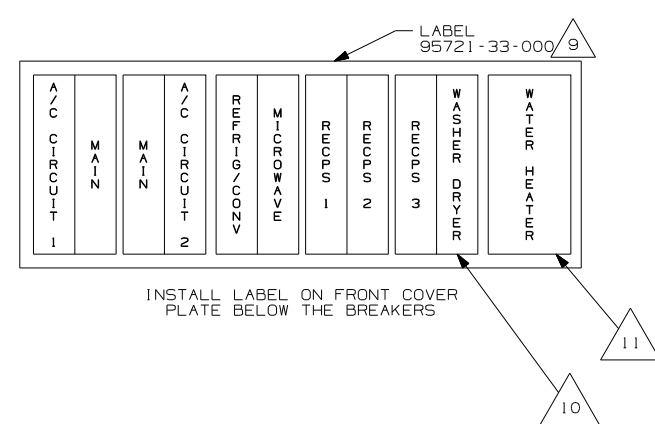
- (611) WTR HTR-AUX AUTO/MOTORAID
- (1B2) WTR HTR-10GAL/ELEC/LP/MTRAI D
- (54E) WASHER/DRYER
- (53D) WTR HTR-6GAL/ELE/LP/MOTORAID
- (21M) WASHER/DRYER PREP
- (12D) ELECTRICAL SYSTEM 30 AMP
- (265) CODES/STANDARDS-CSA/CMVSS
- (1B1) CODES/STANDARDS USA

FIRST USED	07 F-SERIES	
TITLE:	DO NOT SCALE DRAWING	
SHEET 3	PART NO	156338
	REV	15/15/2007

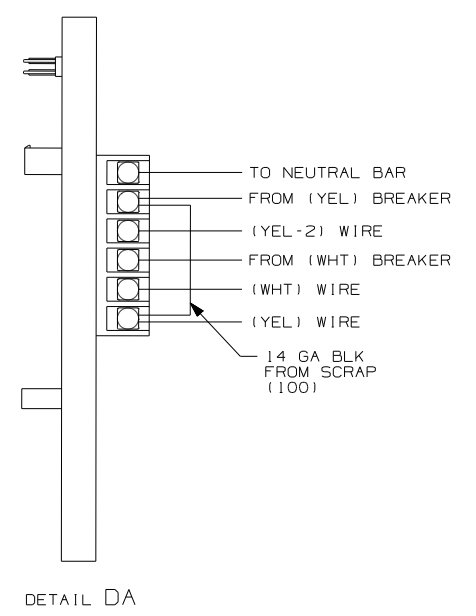


- NOTES:
1. ALL GROUND WIRES TO BE COVERED WITH TUBING 8041-02-000.
  2. GROUND WIRES ARE NOT SHOWN FOR CLARITY.
  3. ALL WIRES TO BE CLAMPED WITHIN 200MM OF ATS.
  4. ALL 110V STRANDED WIRE W/O TERMINALS TO BE STRIPPED 10MM AND SOLDER DIPPED.
  5. ATTACH WIRES TO BACKSIDE OF LOAD CENTER, USE EXISTING HOLES AND TIE-WIRE 116673-01-000.
  6. REMOVE 400MM FROM OUTER JACKET ON ALL WIRES ENTERING LOAD CENTER AND TRIM INDIVIDUAL CONDUCTORS AS REQUIRED TO MAKE INTERNAL CONNECTIONS

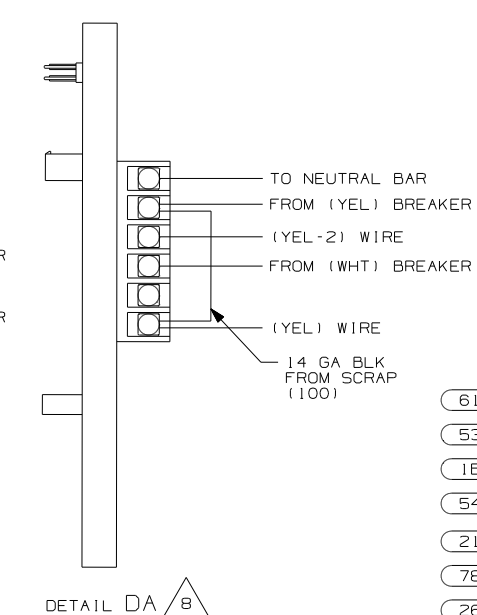
- 12 LOOSEN LEFT BUSS BAR MOUNTING SCREW, INSERT BRACKET-BREAKER HOLD DOWN UNDER SCREW, ORIENTATE BRACKET TOWARD MAIN BREAKER AS SHOWN AND TIGHTEN SCREW.
- 11 BLACKEN OUT WATER HEATER WITH BLACK MARKER WITH 611
- 10 BLACKEN OUT WASHER DRYER WITH BLACK MARKER ON 33V ONLY.
- 9 INSTALLED BY ASSEMBLY LINE.
- 8 WITHOUT 53D OR 1B2
- 7 WITHOUT 21M OR 54E



INSTALL LABEL ON FRONT COVER PLATE BELOW THE BREAKERS



DETAIL DA



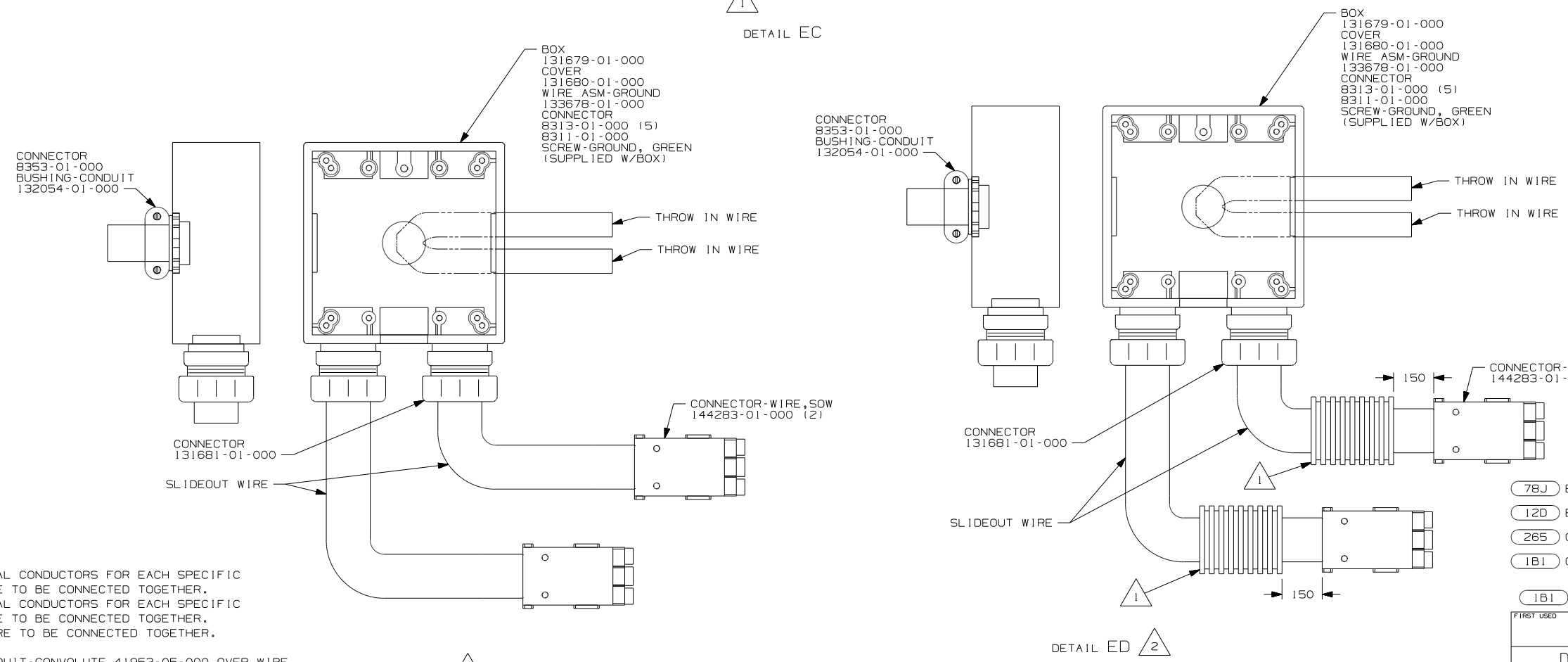
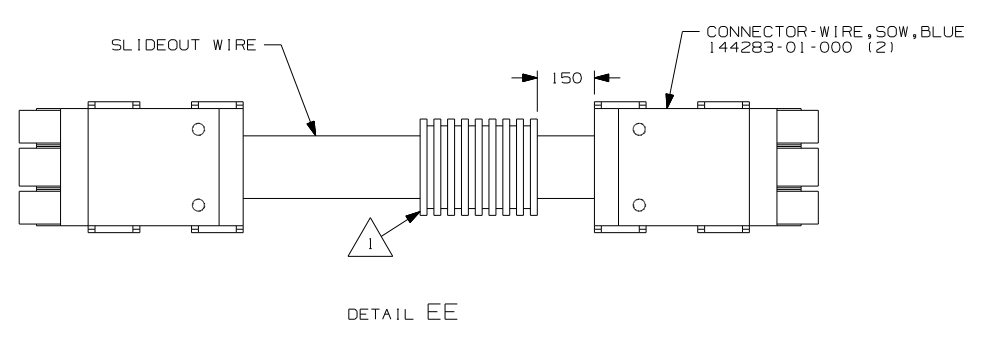
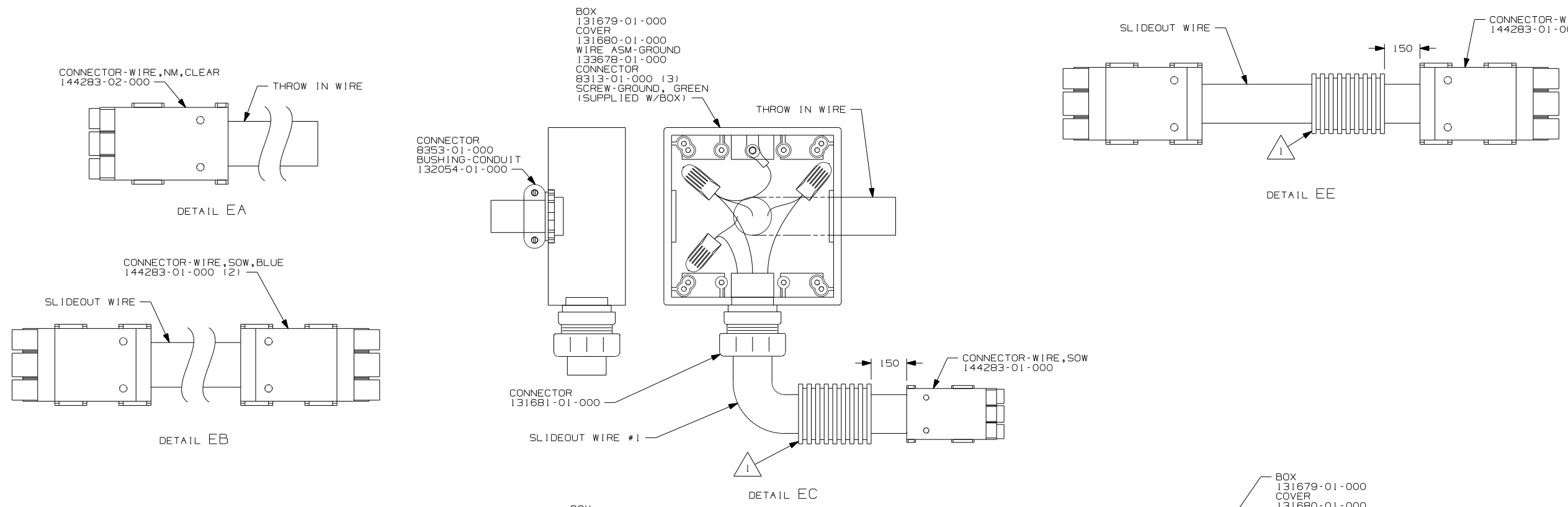
DETAIL DA 8

FOR ELECTRICAL TORQUE SPECIFICATIONS SEE DWG NO. 128783-01-000

X-X FOR ELECTRICAL CALLOUTS SEE DWG NO. 121339-01-000

- 611 WTR HTR-AUX AUTO/MOTORAID
- 53D WTR HTR-6GAL/ELE/LP/MOTORAID
- 1B2 WTR HTR-10GAL/ELEC/LP/MTRAID
- 54E WASHER/DRYER
- 21M WASHER/DRYER PREP
- 78J ELECTRICAL SYSTEM-50 AMP
- 265 CODES/STANDARDS-CSA/CMVSS
- 1B1 CODES/STANDARDS USA

FIRST USED	
07 F-SERIES	
DO NOT SCALE DRAWING	
TITLE: LOAD CENTER/ATS ASM	
SHEET 4	PART NO 156338 REV



- (78J) ELECTRICAL SYSTEM-50 AMP
- (12D) ELECTRICAL SYSTEM 30 AMP
- (265) CODES/STANDARDS-CSA/CMVSS
- (1B1) CODES/STANDARDS USA

FIRST USED	
07 F-SERIES	
DO NOT SCALE DRAWING	
TITLE: LOAD CENTER/ATS ASM	
SHEET 5	PART NO 156338

2 THE BLACK INDIVIDUAL CONDUCTORS FOR EACH SPECIFIC COLORED CIRCUIT ARE TO BE CONNECTED TOGETHER. THE WHITE INDIVIDUAL CONDUCTORS FOR EACH SPECIFIC COLORED CIRCUIT ARE TO BE CONNECTED TOGETHER. ALL GROUND WIRES ARE TO BE CONNECTED TOGETHER.

1 APPLY 300MM OF CONDUIT-CONVOLUTE 41953-05-000 OVER WIRE AT DIMENSION SHOWN AND SECURE BOTH ENDS OF TUBING TO WIRE WITH TAPE 8363-01-000.

NOTES: