



DANGER

Danger of electrical shock, burns or death. Always remove all power sources before attempting any repair, service or diagnostic work. Power can be present from shore power, generator, inverter or battery. All power sources must be disabled and secured before performing any service.

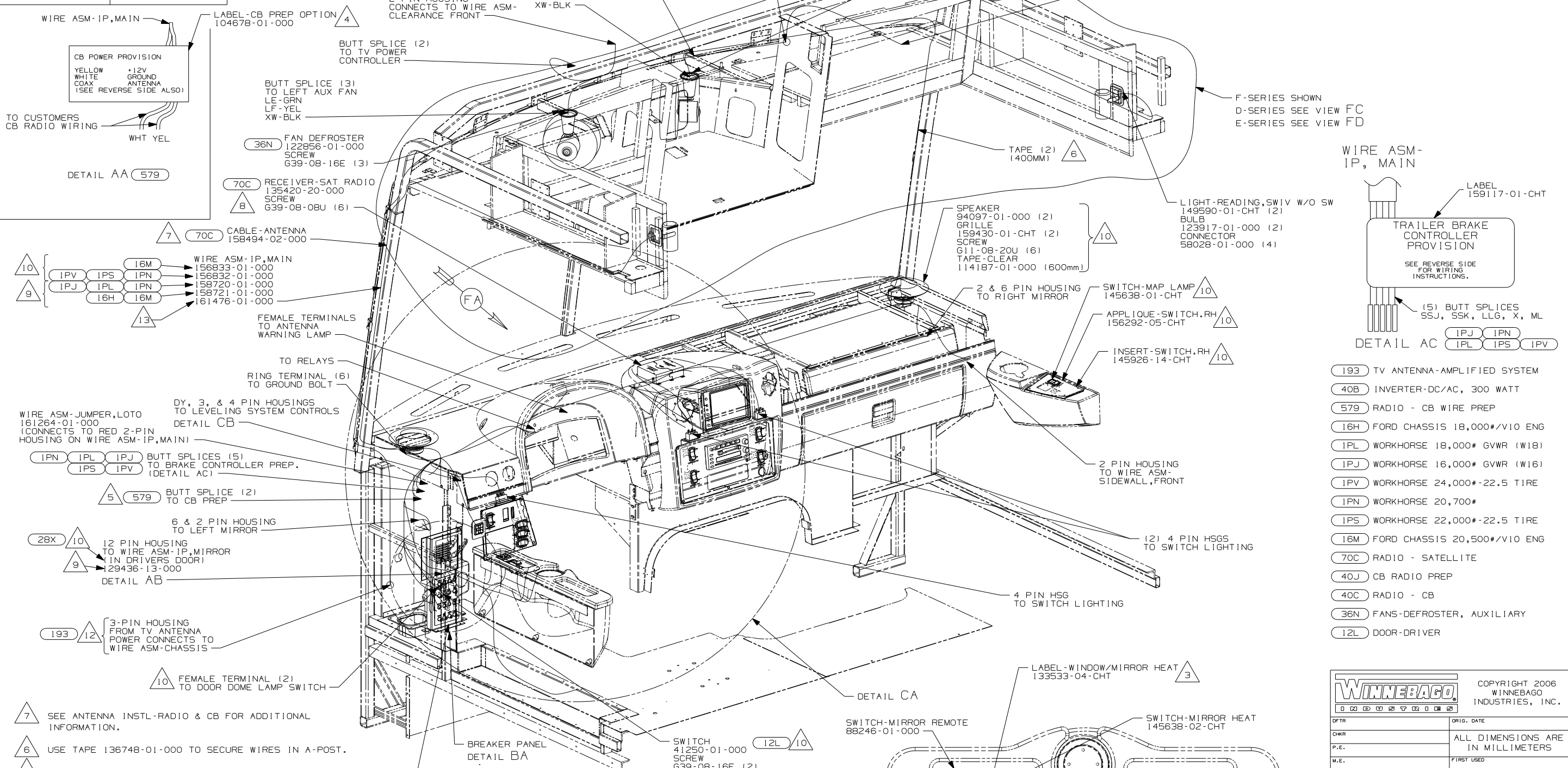


CAUTION

If you lack the skills, tools or equipment to perform diagnostic or repair work leave such work to an authorized Winnebago Industries dealer or other qualified shop.

DRAWING NO.	MODEL
156422-01	F-SERIES
156422-02	D-SERIES
156422-03	E-SERIES

RELEASE	REV/DATE	DWG NO
	A	156422
REV ZONE	REVISION RECORD	DATE
		DFTR-016



- 7 SEE ANTENNA INSTL-RADIO & CB FOR ADDITIONAL INFORMATION.
 - 6 USE TAPE 136748-01-000 TO SECURE WIRES IN A-POST.
 - 5 SEE DETAIL AA.
 - 4 EDGE OF LABEL TO HANG JUST BELOW BOTTOM OF DASH.
 - 3 CUT LABEL TO READ ONLY MIRROR HEAT. POSITION NEXT TO MIRROR HEAT SWITCH AS SHOWN.
 - 2 COVER EACH SPEAKER GRILL WITH TAPE-CLEAR 114187-01-000 (600 MM).
1. WINNEBAGO WIRE ASSEMBLIES ARE SHOWN FOR CLARITY.
- NOTES:

- 12 USED ON F335 & F385 ONLY
- 11 SEE WIRING INSTL-TV/DVD,FRONT FOR ADDITIONAL INFORMATION.
- 10 F-SERIES
- 9 D-SERIES
- 8 CONNECT CABLE SUPPLIED WITH SATELLITE RADIO TO RECEIVER & PLUG INTO BACK OF RADIO.
- 13 E-SERIES

WINNEBAGO		COPYRIGHT 2006 WINNEBAGO INDUSTRIES, INC.	
DFTR	ORIG. DATE		
CHKR		ALL DIMENSIONS ARE IN MILLIMETERS	
P.E.		FIRST USED	
M.E.		07 D&F-SER	
DSNR			
UNSPECIFIED TOLERANCES ARE:		MATERIAL:	
WHOLE DIM (X)	: 3		
ONE-PLACE (X.X)	: 1.5		
TWO-PLACE (X.XX)	: 0.50		
ANGLE	: 1°		
THIRD ANGLE PROJECTION			
DO NOT SCALE DRAWING			
TITLE: WIRING INSTL-FRONT END			
SHEET 1 OF 5	PART NO	156422	
REF:	1 2/5/2007		

FOR ELECTRICAL TORQUE SPECIFICATIONS SEE DWG NO. 128783-01-000

X-X

FOR ELECTRICAL CALLOUTS SEE DWG NO. 121339-01-000

3 CIRCUIT BREAKER-15 AMP
93654-02-000
SCREW
G52-06-05B
LOCKWASHER
OME02B-04-071

CIRCUIT BREAKER-30 AMP
93655-02-000
SCREW
G52-06-04B
G52-06-05B
LOCKWASHER
OME02B-04-071 (2)

CIRCUIT BREAKER-15 AMP
93654-02-000 (3)
SCREW
G52-06-05B (3)
LOCKWASHER
OME02B-04-071 (3)

CIRCUIT BREAKER-25 AMP 16M 16H
93655-01-000
SCREW
G52-06-04B
G52-06-05B
LOCKWASHER
OME02B-04-071 (2)

40B CIRCUIT BREAKER-30 AMP
93655-02-000
SCREW
G52-06-04B
G52-06-05B
LOCK WASHER
OME02B-04-071 (2)

LABEL-CIRCUIT BREAKER
93236-47-000

CIRCUIT BREAKER-30 AMP 64Q
93655-02-000
SCREW
G52-06-04B
G52-06-05B
LOCKWASHER
OME02B-04-071 (2)

57M CIRCUIT BREAKER-15 AMP
93654-02-000
SCREW
G52-06-05B
LOCKWASHER
OME02B-04-071

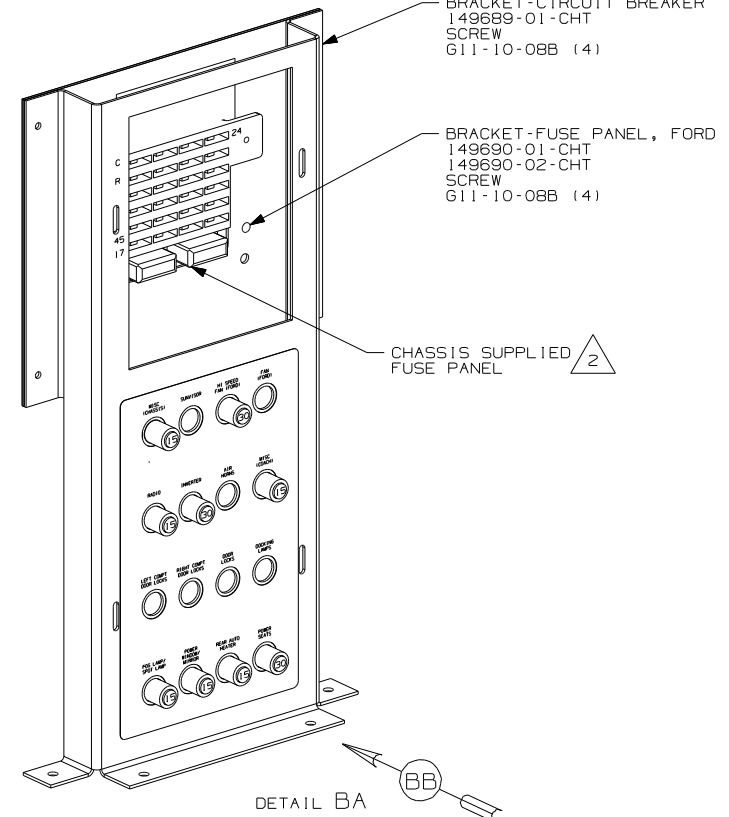
VIEW BB

CIRCUIT BREAKER-15 AMP } 53Z 5 6
93654-02-000
SCREW
G52-06-05B
LOCKWASHER
OME02B-04-071

BRACKET-CIRCUIT BREAKER
149689-01-CHT
SCREW
G11-10-08B (4)

BRACKET-FUSE PANEL, FORD
149690-01-CHT
149690-02-CHT
SCREW
G11-10-08B (4)

CHASSIS SUPPLIED
FUSE PANEL 2



DETAIL BA

- NOTES:
- 6 F-SERIES
 - 5 D-SERIES
 - 4 F38J: CONNECT DDG TO HOLE IN BUSS BAR
ALL OTHER MODELS: CONNECT DDG TO BOTTOM
LUG OF 30 AMP BREAKER
 - 3 F38J ONLY. DO NOT USE ON OTHER MODELS.
 - 2 WORKHORSE PANEL SHOWN.
 - 1 ALL CIRCUITS ARE IN WIRE ASM-IP,MAIN.

BUSS BAR CIRCUIT BREAKER
141744-01-000

5 WIRE ASM-IP,MAIN

5 CM

BUSS BAR CIRCUIT BREAKER
141744-03-000

CABLE ASM
7332B-H3-000 3

BUSS BAR CIRCUIT BREAKER
141744-03-000

VIEW BC 1 16H 16M

5 WIRE ASM-IP,MAIN

5 CM

BUSS BAR CIRCUIT BREAKER 3
141744-02-000

BUSS BAR CIRCUIT BREAKER
141744-03-000

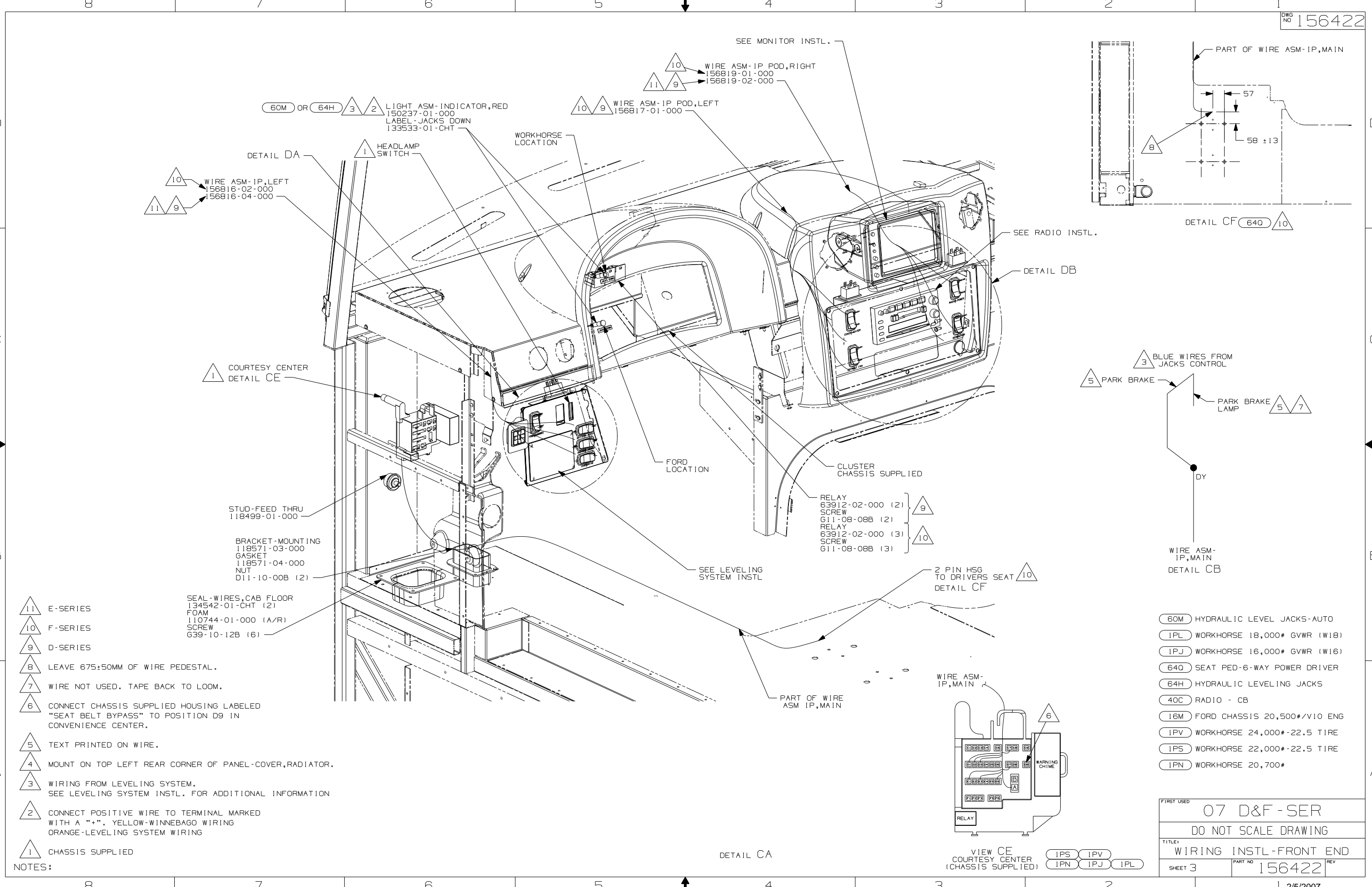
DDG 4

BUSS BAR CIRCUIT BREAKER
141744-03-000

VIEW BC 1 1PN 1PS 1PV

- 53Z WTR HTR-6GAL/110/LP/MTR/AUTO
- 57M LAMPS-FOG
- 1PL WORKHORSE 18,000# GVWR (W18)
- 1PJ WORKHORSE 16,000# GVWR (W16)
- 16H FORD CHASSIS 18,000#/V10 ENG
- 967 SEAT PEDESTALS
- 64Q SEAT PED-6-WAY POWER DRIVER
- 16M FORD CHASSIS 20,500#/V10 ENG
- 1PV WORKHORSE 24,000#-22.5 TIRE
- 1PS WORKHORSE 22,000#-22.5 TIRE
- 1PN WORKHORSE 20,700#

FIRST USED	07 D&F - SER	
TITLE	DO NOT SCALE DRAWING	
	WIRING INSTL-FRONT END	
SHEET 2	PART NO 156422	REV

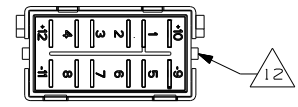


- 11 E-SERIES
- 10 F-SERIES
- 9 D-SERIES
- 8 LEAVE 675±50MM OF WIRE PEDESTAL.
- 7 WIRE NOT USED. TAPE BACK TO LOOM.
- 6 CONNECT CHASSIS SUPPLIED HOUSING LABELED "SEAT BELT BYPASS" TO POSITION D9 IN CONVENIENCE CENTER.
- 5 TEXT PRINTED ON WIRE.
- 4 MOUNT ON TOP LEFT REAR CORNER OF PANEL-COVER,RADIATOR.
- 3 WIRING FROM LEVELING SYSTEM. SEE LEVELING SYSTEM INSTL. FOR ADDITIONAL INFORMATION
- 2 CONNECT POSITIVE WIRE TO TERMINAL MARKED WITH A "+". YELLOW-WINNEBAGO WIRING ORANGE-LEVELING SYSTEM WIRING
- 1 CHASSIS SUPPLIED

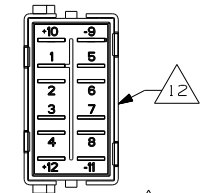
NOTES:

- 60M HYDRAULIC LEVEL JACKS-AUTO
- 1PL WORKHORSE 18,000# GVWR (W18)
- 1PJ WORKHORSE 16,000# GVWR (W16)
- 640 SEAT PED-6-WAY POWER DRIVER
- 64H HYDRAULIC LEVELING JACKS
- 40C RADIO - CB
- 16M FORD CHASSIS 20,500#/V10 ENG
- 1PV WORKHORSE 24,000#-22.5 TIRE
- 1PS WORKHORSE 22,000#-22.5 TIRE
- 1PN WORKHORSE 20,700#

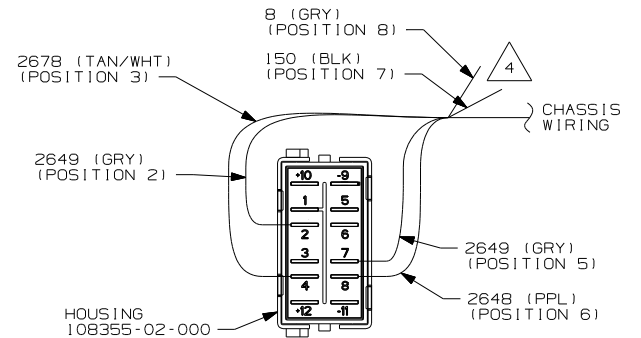
FIRST USED	
07 D&F - SER	
DO NOT SCALE DRAWING	
TITLE:	
WIRING INSTL-FRONT END	
SHEET 3	PART NO 156422 REV



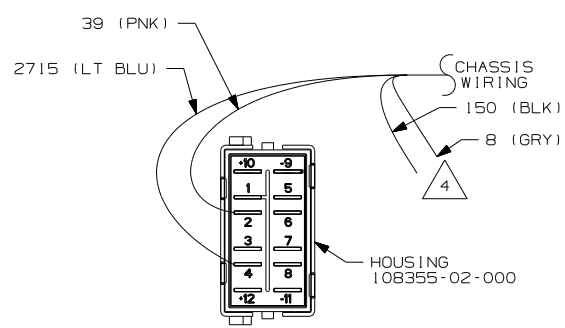
DETAIL DB (11)
(MOUNTED HORIZONTALLY)



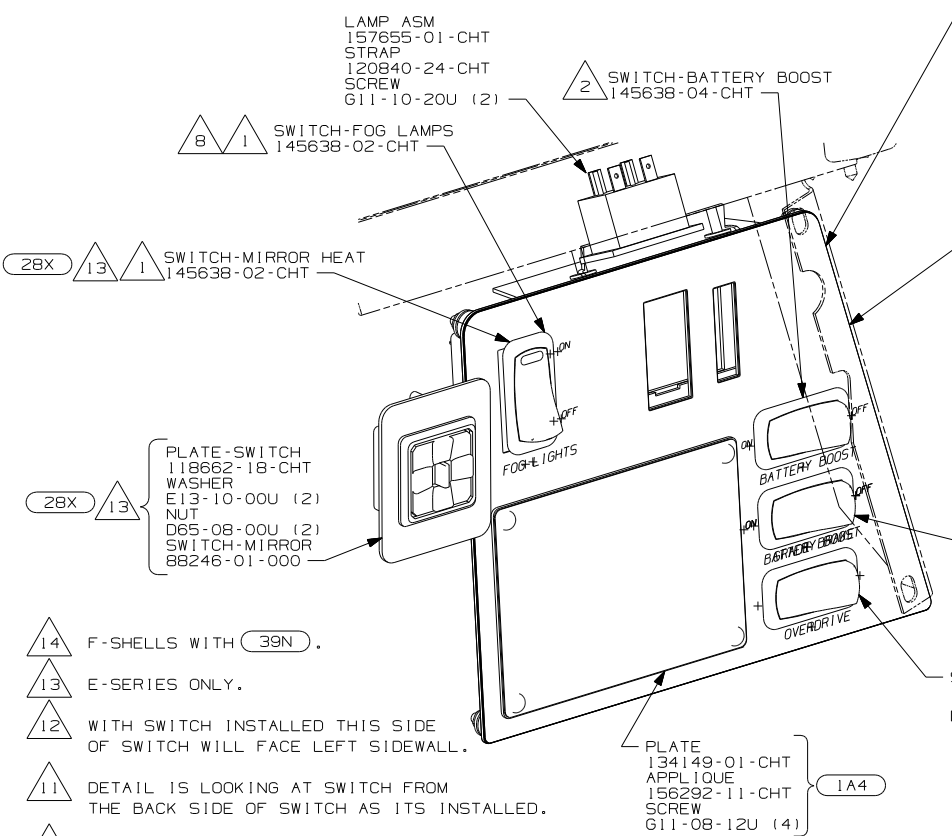
DETAIL DB (11)
(MOUNTED VERTICALLY)



DETAIL DF
(OVERDRIVE SWITCH)

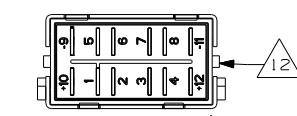


DETAIL DE
(GRADE BRAKE SWITCH)

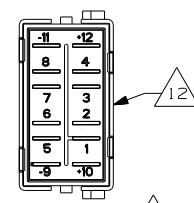


DETAIL DA

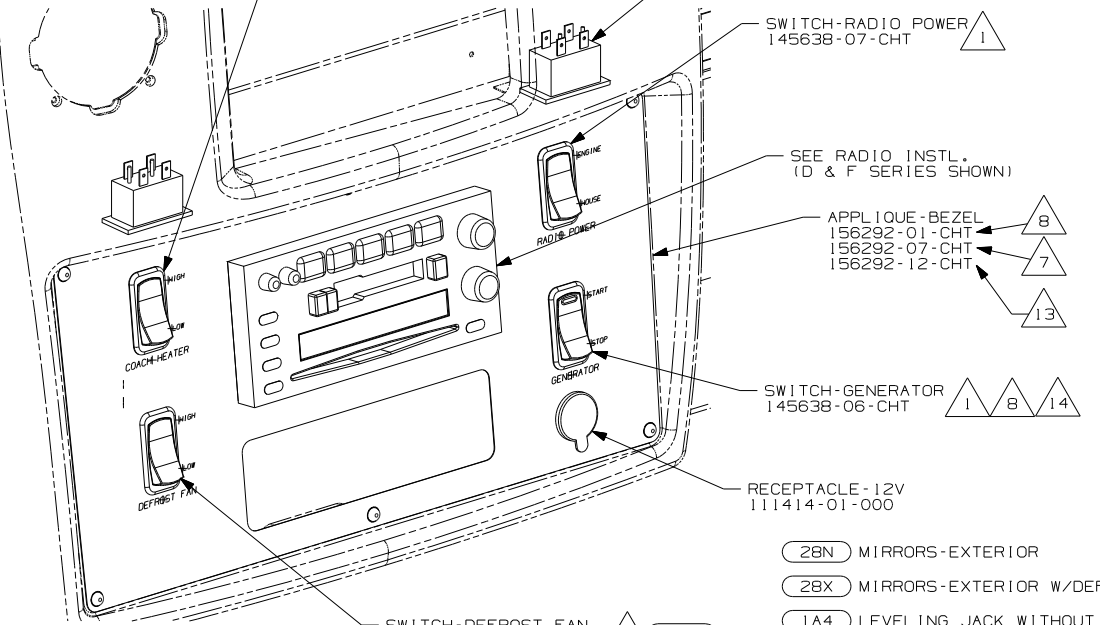
- INSERT-SWITCH 155589-04-CHT
 - MOUNT-HEADLAMP-SWITCH 155516-01-CHT
 - SEAL 155523-01-CHT
 - WASHER E13-10-00U (7)
 - NUT D65-08-00U (7)
 - APPLIQUE 156292-03-CHT
 - 156292-10-CHT
 - 156292-13-CHT
- 16M 16H
- 16M 8
- 16H 16M 7 15
- 16H 13 28X
- INSERT-SWITCH 155589-02-CHT
 - WASHER E13-10-00U (4)
 - NUT D65-08-00U (4)
 - APPLIQUE 156292-02-CHT
 - 156292-08-CHT
 - 156292-09-CHT
- IPN IPS IPV
- IPJ IPL
- IPN 7 8
- IPJ IPL 7



DETAIL DC (11)
(MOUNTED HORIZONTALLY)



DETAIL DC (11)
(MOUNTED VERTICALLY)



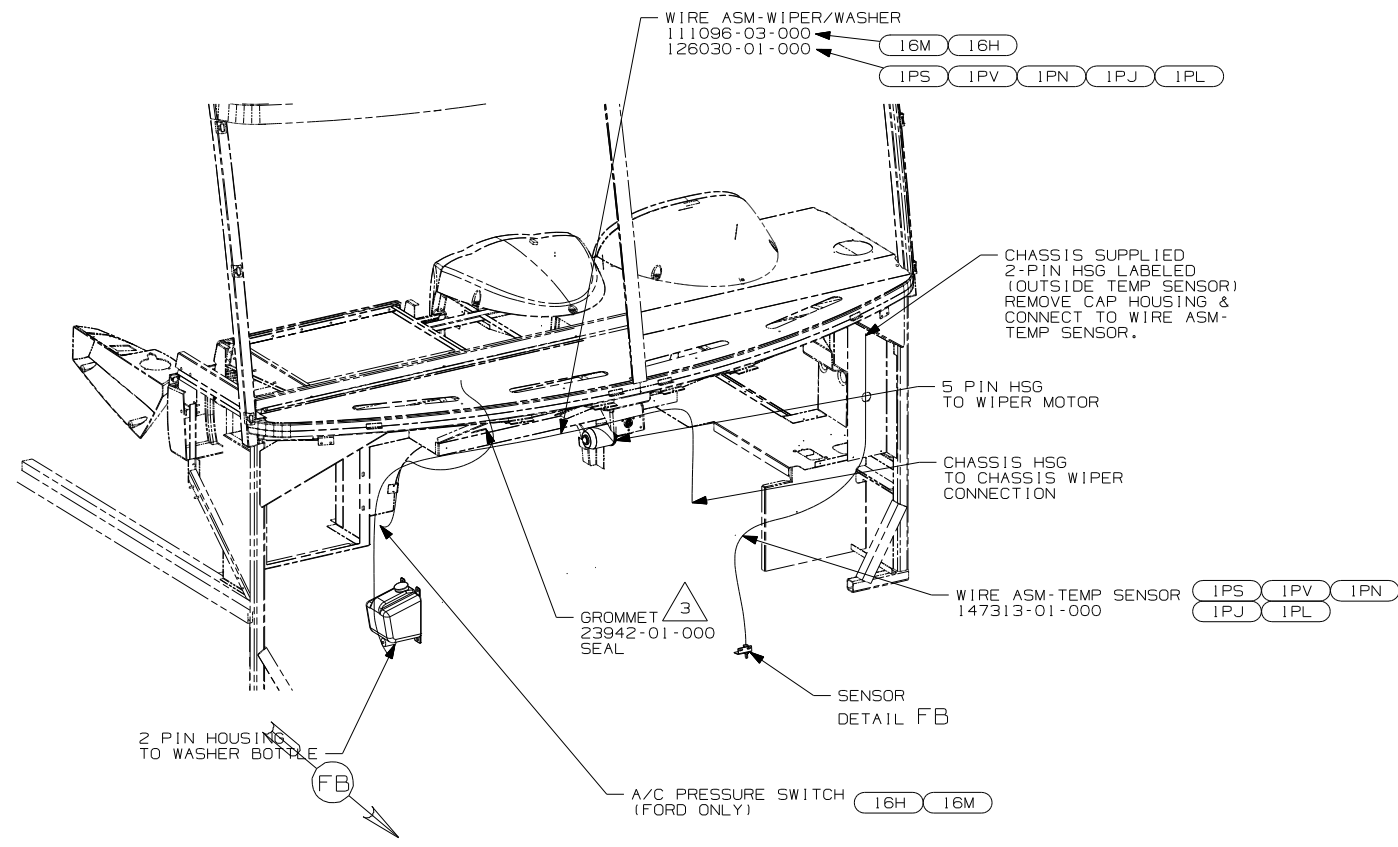
DETAIL DB

- 28N MIRRORS-EXTERIOR
- 28X MIRRORS-EXTERIOR W/DEFROST
- 1A4 LEVELING JACK WITHOUT
- IPJ WORKHORSE 16,000# GVWR (W16)
- IPL WORKHORSE 18,000# GVWR (W18)
- 16H FORD CHASSIS 18,000#/V10 ENG
- 53Z WTR-HTR-6GAL/110/LP/MTR/AUTO
- 36N FANS-DEFROSTER, AUXILIARY
- 16M FORD CHASSIS 20,500#/V10 ENG
- IPV WORKHORSE 24,000#-22.5 TIRE
- IPS WORKHORSE 22,000#-22.5 TIRE
- IPN WORKHORSE 20,700#
- 092 SLIDEOUT ROOM - FRONT RIGHT
- 09L SLIDEOUT ROOM FRONT LEFT

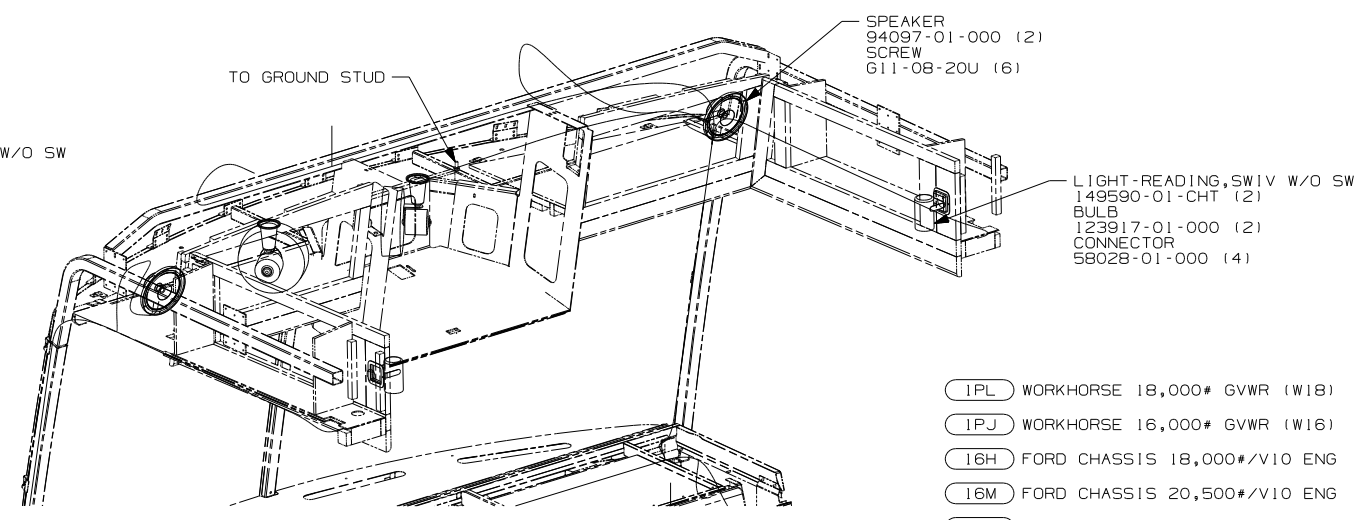
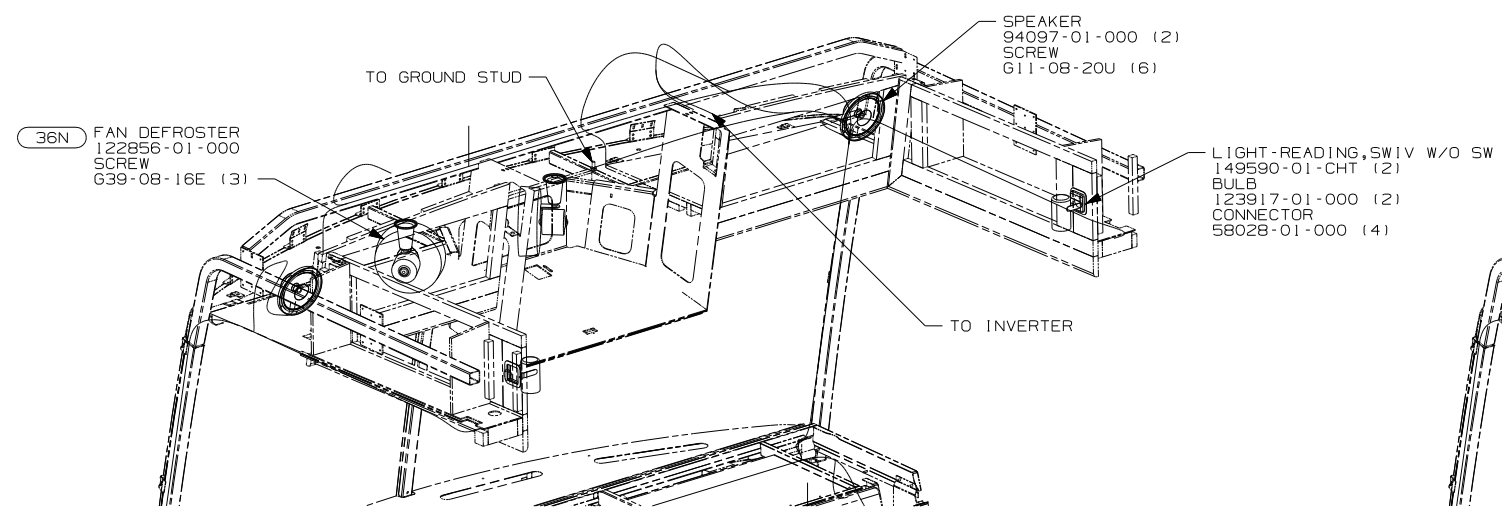
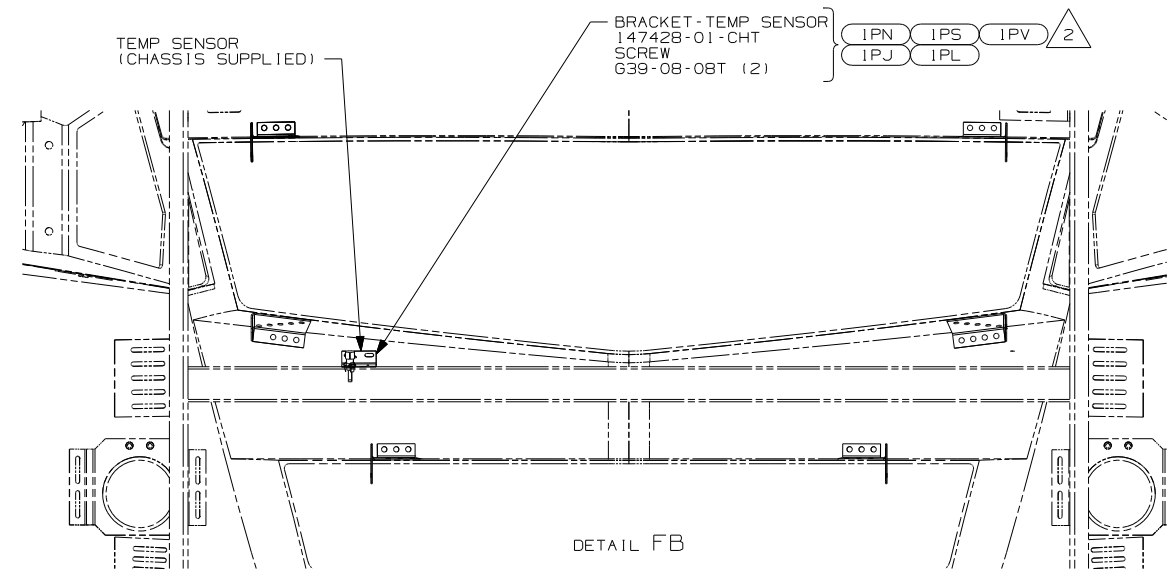
- 14 F-SHELLS WITH 39N.
 - 13 E-SERIES ONLY.
 - 12 WITH SWITCH INSTALLED THIS SIDE OF SWITCH WILL FACE LEFT SIDEWALL.
 - 11 DETAIL IS LOOKING AT SWITCH FROM THE BACK SIDE OF SWITCH AS ITS INSTALLED.
 - 10 D-SERIES WITHOUT 53Z
 - 9 D-SERIES WITH 53Z
 - 8 F-SERIES
 - 7 D-SERIES
 - 6 WITHOUT 36N ON D OR F-SERIES ONLY. N/A ON E-SERIES
 - 5 POSITIONS NOTED IN PARENTHESIS ARE LOCATIONS IN WORKHORSE SUPPLIED HOUSING.
 - 4 REMOVE TERMINALS & TAPE BACK TO LOOM.
 - 3 WITHOUT 092
 - 2 SEE DETAIL DC FOR ORIENTATION.
 - 1 SEE DETAIL DB FOR ORIENTATION.
- NOTES:

- 15 E-SERIES WITH 28N.

FIRST USED		
07 D&F - SER		
DO NOT SCALE DRAWING		
TITLE:		
WIRING INSTL-FRONT END		
SHEET 4	PART NO	REV
	156422	



DETAIL FA



- 1PL WORKHORSE 18,000# GVWR (W18)
- 1PJ WORKHORSE 16,000# GVWR (W16)
- 16H FORD CHASSIS 18,000#/V10 ENG
- 16M FORD CHASSIS 20,500#/V10 ENG
- 1PV WORKHORSE 24,000#-22.5 TIRE
- 1PS WORKHORSE 22,000#-22.5 TIRE
- 1PN WORKHORSE 20,700#

- 5 E-SERIES ONLY
- 4 D-SERIES ONLY
- 3 ROUTE WIRES THROUGH HOLE IN STEEL.
- 2 MOUNT SENSOR OR SENSOR BRACKET TO HORIZONTAL TUBE ON FIBERGLASS AS SHOWN.

NOTES:
1. GATHER ALL EXCESS WIRE AFTER MAKING ALL CONNECTIONS.
BUNDLE AND SECURE WITH WIRE TIE 8343-01-000 OR 93147-01-000.

FIRST USED	07 D&F - SER	
TITLE	DO NOT SCALE DRAWING	
	WIRING INSTL-FRONT END	
SHEET 5	PART NO 156422	REV