



DANGER

Danger of electrical shock, burns or death. Always remove all power sources before attempting any repair, service or diagnostic work. Power can be present from shore power, generator, inverter or battery. All power sources must be disabled and secured before performing any service.

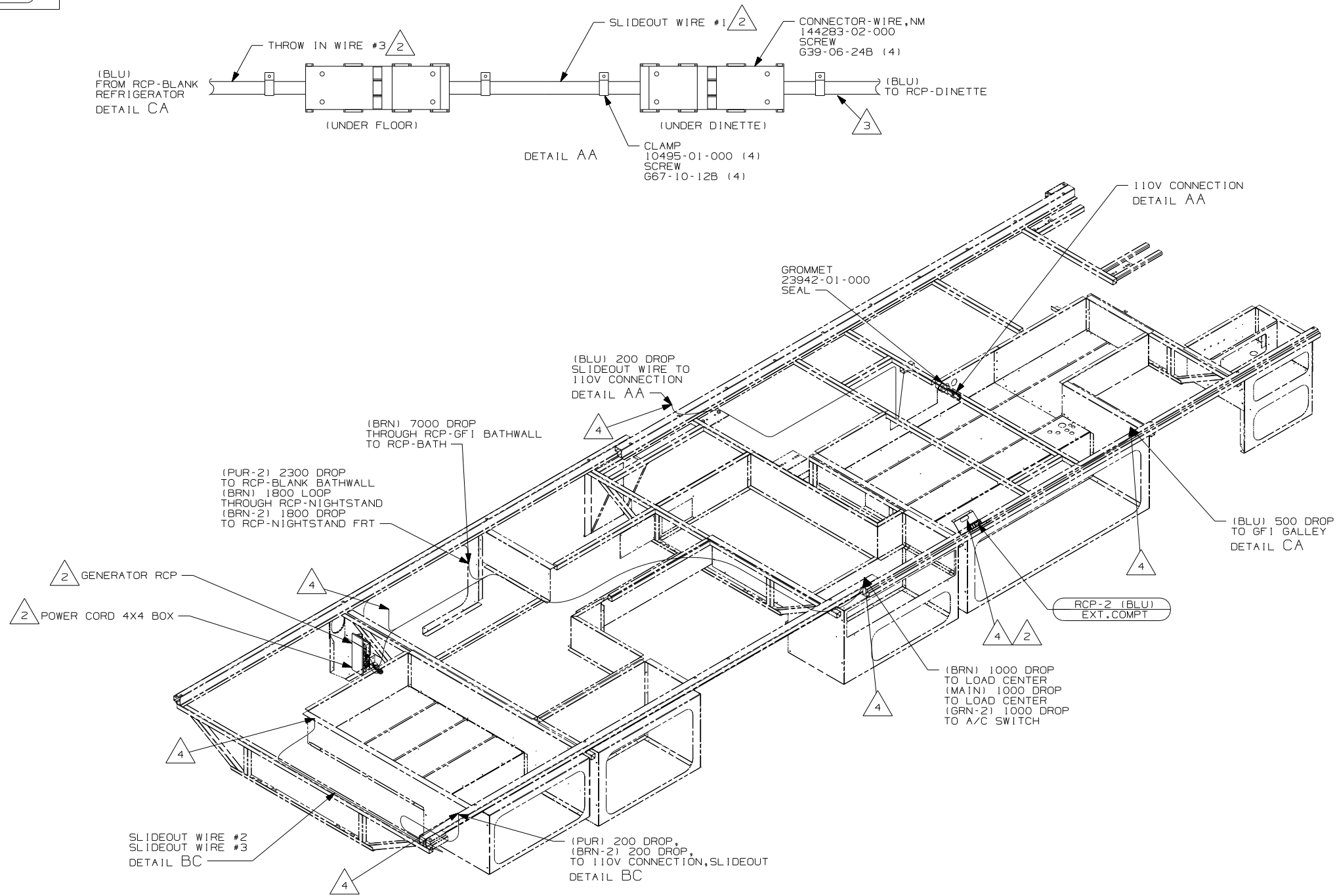


CAUTION

If you lack the skills, tools or equipment to perform diagnostic or repair work leave such work to an authorized Winnebago Industries dealer or other qualified shop.

| DRAWING NO. | FEATURE |
|-------------|-------------|
| 159698-11 | (1B1) (12D) |
| 159698-15 | (265) (12D) |

| | | |
|----------|-----------------|---------------|
| RELEASE | REV DATE | DWG NO |
| A | | 159698 |
| REV ZONE | REVISION RECORD | DATE DFR-ORIG |



- (12D) ELECTRICAL SYSTEM 30 AMP
- (265) CODES/STANDARDS-CSA/CMVSS
- (1B1) CODES/STANDARDS USA
- (1B1) (265)

WINNEBAGO COPYRIGHT 2006 WINNEBAGO INDUSTRIES, INC.

| | |
|------|-----------------------------------|
| DFTR | ORIG. DATE |
| CHKR | ALL DIMENSIONS ARE IN MILLIMETERS |
| P.E. | |
| M.E. | FIRST USED |
| DSNR | 07 D35J |

UNSPECIFIED TOLERANCES ARE: MATERIAL:

| | |
|------------------|--------|
| HOLE DIM (X) | : 3 |
| ONE-PLACE (X.X) | : 1.5 |
| TWO-PLACE (X.XX) | : 0.50 |
| ANGLE | : 1° |

THIRD ANGLE PROJECTION

DO NOT SCALE DRAWING

TITLE: WIRING INSTL-BODY, 110V

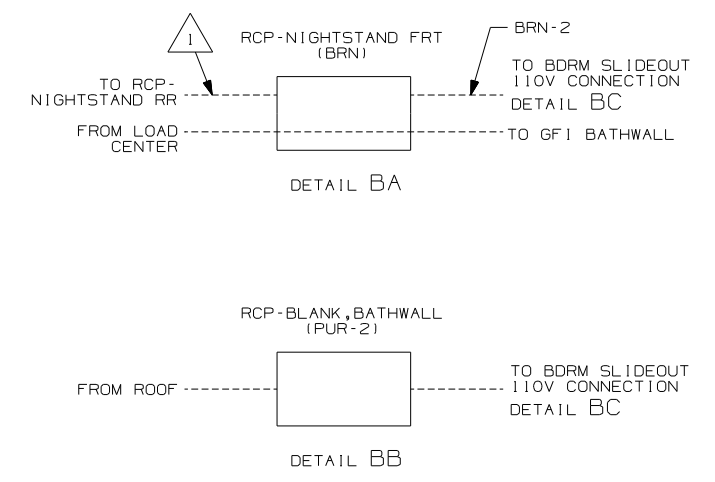
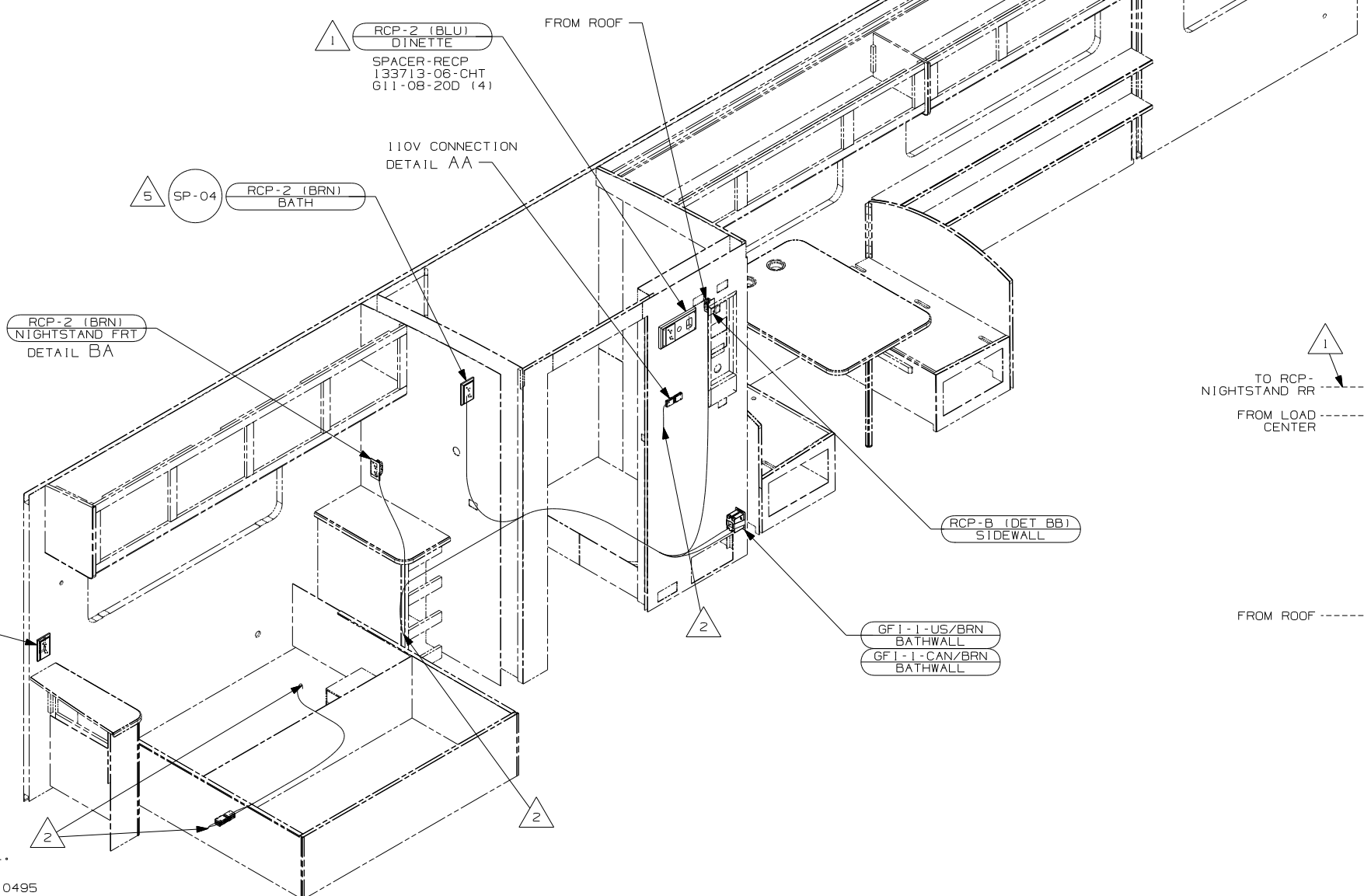
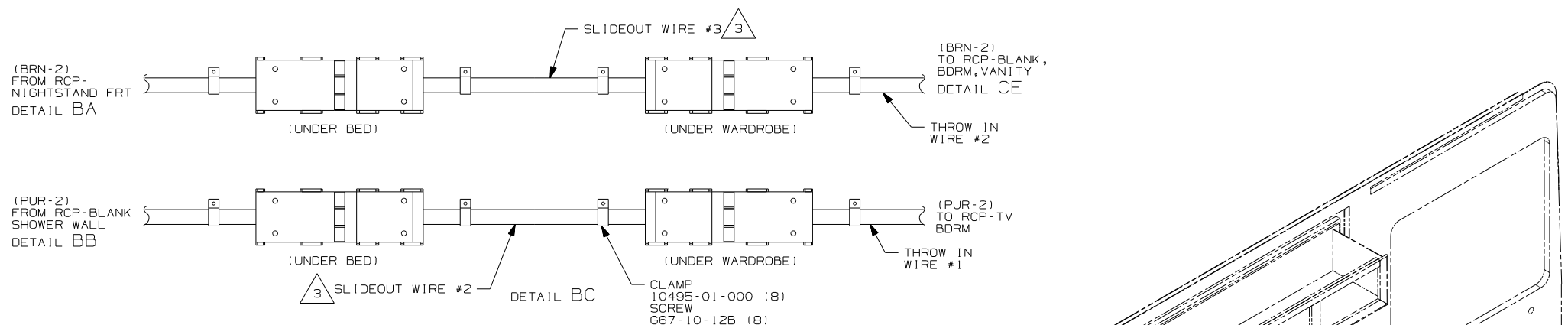
SHEET 1 of 3 PART NO 159698 REV

REF: 1 8/28/2006

5. ALL WIRES TO BE SECURED WITH CLAMP 10495 OR 10497 OR WIRE TIE 8343 OR 108046 EVERY 600MM, USE SCREW G67-XX-XXX OR G56-XX-XXX AS APPROPRIATE FOR INSTALLATION.
- (4) WIRE ROUTED THROUGH FLOOR IN THIS AREA.
 - (3) WIRE IN SIDEWALL.
 - (2) SEE LOAD CENTER/ATS FOR ADDITIONAL INFORMATION.
1. WIRES ROUTED UNDER FLOOR.
- NOTES:

FOR ELECTRICAL TORQUE SPECIFICATIONS SEE DWG NO. 128783-01-000

(X-X) FOR ELECTRICAL CALLOUTS SEE DWG NO. 121339-01-000



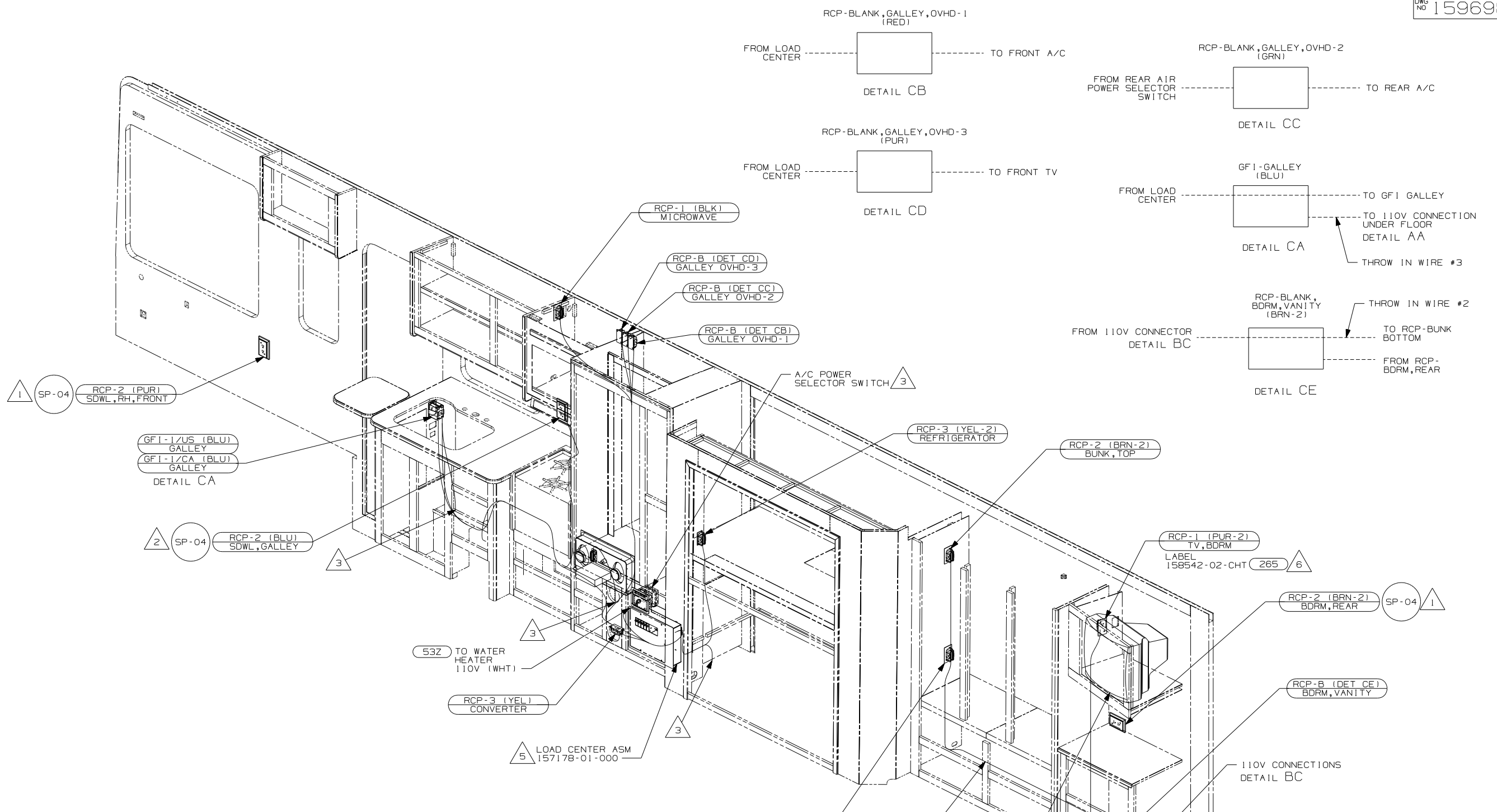
- 5 WIRE ROUTED THROUGH PATH IN SIDEWALL.
4. ALL WIRES TO BE SECURED WITH CLAMP 10495 OR 10497 OR WIRE TIE 8343 OR 108046 EVERY 600MM, USE SCREW G67-XX-XXX OR G56-XX-XXX AS APPROPRIATE FOR INSTALLATION.
- 3 SEE LOAD CENTER/ATS FOR ADDITIONAL INFORMATION.
- 2 WIRE ROUTES THRU FLOOR IN THIS AREA.
- 1 WIRE ROUTED IN SIDEWALL
- NOTES:

- (265) CODES/STANDARDS-CSA/CMVSS
- (1B1) CODES/STANDARDS USA
- (1B1) (265)

FOR ELECTRICAL TORQUE SPECIFICATIONS SEE DWG NO. 128783-01-000

FOR ELECTRICAL CALLOUTS SEE DWG NO. 121339-01-000

| | |
|------------|-------------------------|
| FIRST USED | 07 D35J |
| TITLE: | DO NOT SCALE DRAWING |
| | WIRING INSTL-BODY, 110V |
| SHEET 2 | PART NO 159698 REV |



- 6 WITHOUT IJU
- 5 LOAD CENTER GROUND WIRES MUST BE ATTACHED DIRECTLY TO CHASSIS GROUND.
- 4. ALL WIRES TO BE SECURED WITH CLAMP 10495 OR 10497 OR WIRE TIE 8343 OR 108046 EVERY 600MM, USE SCREW G67-XX-XXX OR G56-XX-XXX AS APPROPRIATE FOR INSTALLATION.
- 3 WIRES ROUTE THRU FLOOR IN THIS AREA.
- 2 ROUTE WIRE THRU SIDEWALL.
- 1 WIRE ROUTED IN SIDEWALL.

NOTES:

- 53Z TO WATER HEATER 110V (WHT)
- RCP-3 (YEL) CONVERTER
- LOAD CENTER ASM 157178-01-000
- RCP-2 (BRN-2) BUNK, BOTTOM
- THROW IN WIRE #2
- I B1 IJU TV-19" 159178-03-000 CABLE ASM-COAX 87105-01-009
- 53Z WTR HTR-66AL/110/LP/MTR/AUTO
- 265 CODES/STANDARDS-CSA/CMVSS
- I B1 CODES/STANDARDS USA
- I B1 265

FOR ELECTRICAL TORQUE SPECIFICATIONS SEE DWG NO. 128783-01-000

X-X FOR ELECTRICAL CALLOUTS SEE DWG NO. 121339-01-000

| | |
|------------|-------------------------|
| FIRST USED | 07 D35J |
| TITLE | DO NOT SCALE DRAWING |
| | WIRING INSTL-BODY, 110V |
| SHEET 3 | PART NO 159698 REV |