



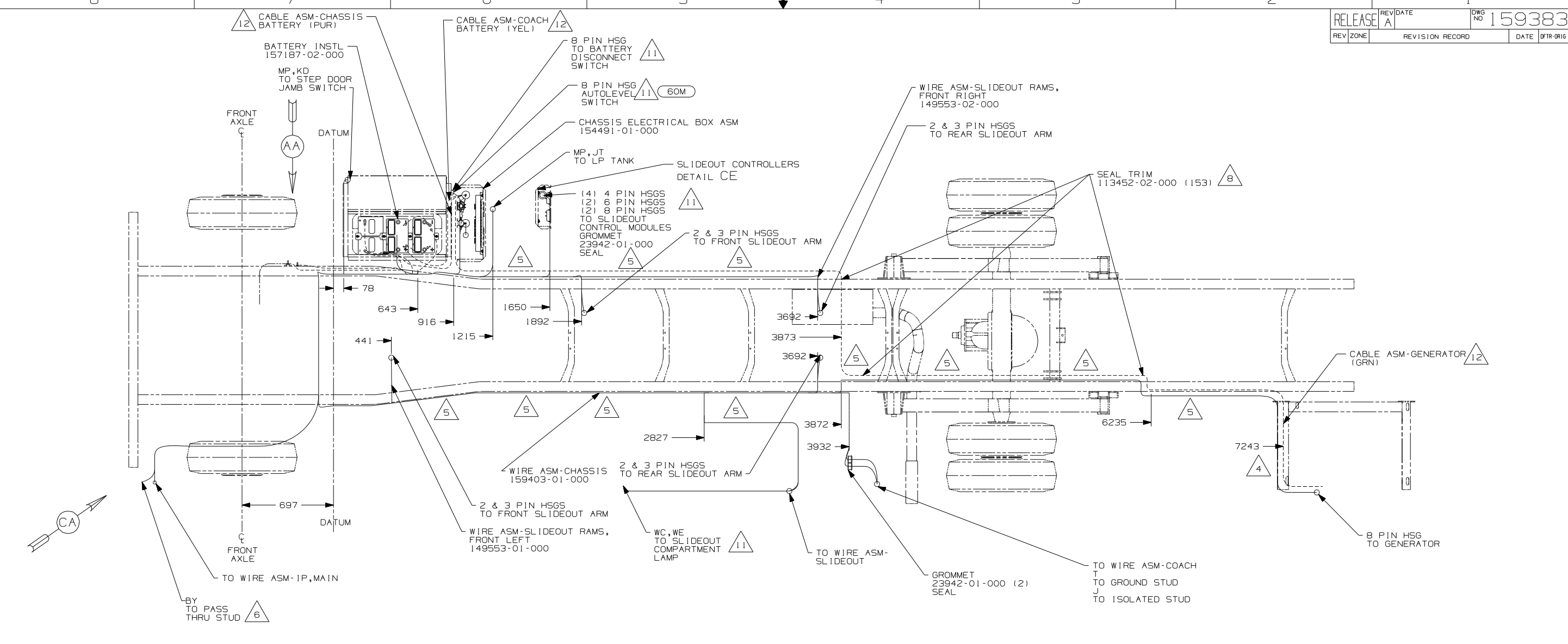
DANGER

Danger of electrical shock, burns or death. Always remove all power sources before attempting any repair, service or diagnostic work. Power can be present from shore power, generator, inverter or battery. All power sources must be disabled and secured before performing any service.



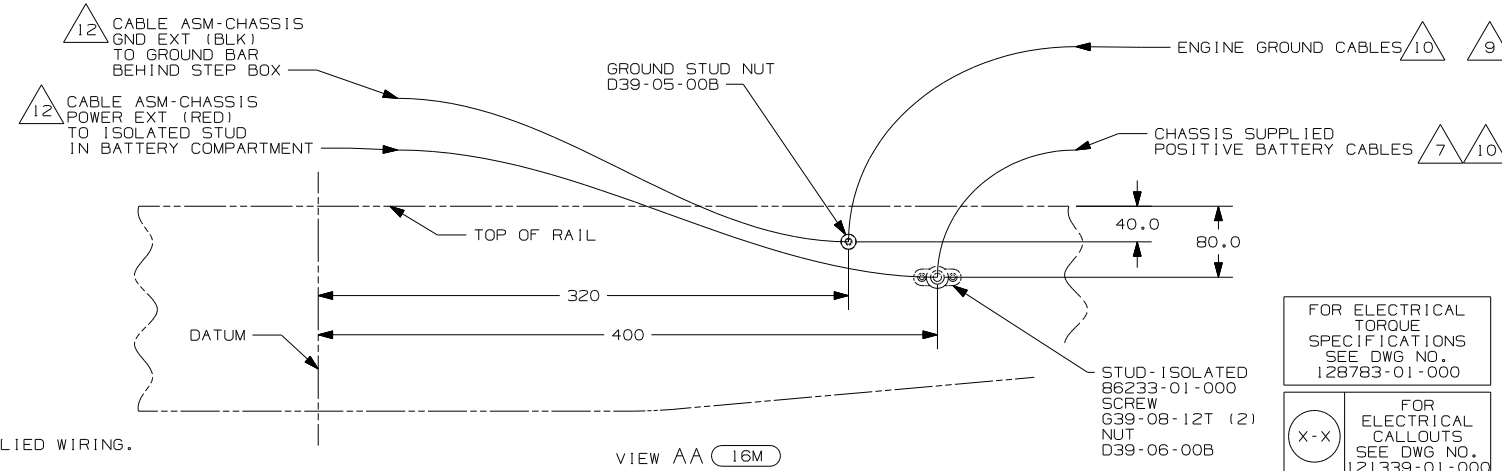
CAUTION

If you lack the skills, tools or equipment to perform diagnostic or repair work leave such work to an authorized Winnebago Industries dealer or other qualified shop.



- 12 SEE BATTERY INSTALLATION FOR ADDITIONAL INFORMATION.
 - 11 SEE WIRING INSTL-BODY,12 FOR ADDITIONAL INFORMATION
 - 10 SUPPLIED WITH CHASSIS.
 - 9 CUT CHASSIS SUPPLIED BATTERY GROUND CABLE 700mm FROM BATTERY TERMINAL AND ADD TERMINAL 8348-01-000 TO CUT END.
 - 8 COVER SHARP EDGES WHERE WIRE CROSSES FRAME RAILS.
 - 7 CUT CHASSIS SUPPLIED POSITIVE BATTERY CABLE 150mm FROM BATTERY TERMINAL END, DISCARD TERMINAL END AND ADD TERMINAL 113738-01-000 TO CUT END. COIL EXCESS CABLE ALONG FRAME RAIL JUST BEHIND THE RADIATOR AND TIE UP WITH TIE-WIRE 8343-04-000.
 - 6 SEE WIRING INSTL-FRONT END FOR ADDITIONAL INFORMATION.
 - 5 CLAMP 83610-01-000, SCREW G11-10-16B.
 - 4 WIRE TIE 8343-04-00. FASTEN EVERY 600mm MINIMUM.
3. ALL DIMENSIONS ARE FROM DATUM UNLESS OTHERWISE SPECIFIED.
2. SECURE CONDUIT 41953, TAB AS REQUIRED, OVER ALL WIRES IN CONTACT WITH SHARP EDGES.
1. LEGEND: — WINNEBAGO: - - - - - CABLE: - - - - - CHASSIS SUPPLIED WIRING.

- 60M HYDRAULIC LEVEL JACKS-AUTO
- 16M FORD CHASSIS - 20,500# GVWR
- 265 CODES/STANDARDS - CSA/CMVSS
- 1B1 CODES/STANDARDS - USA



16M 1B1 265

WINNEBAGO COPYRIGHT 2006 WINNEBAGO INDUSTRIES, INC.

DFTR	ORIG. DATE
CHKR	ALL DIMENSIONS ARE IN MILLIMETERS
P.E.	
M.E.	FIRST USED
DSNR	07 D34A

UNSPECIFIED TOLERANCES ARE: MATERIAL:

HOLE DIM (X)	: 1
ONE-PLACE (X.X)	: 1.5
TWO-PLACE (X.XX)	: 0.50
ANGLE	: 1°

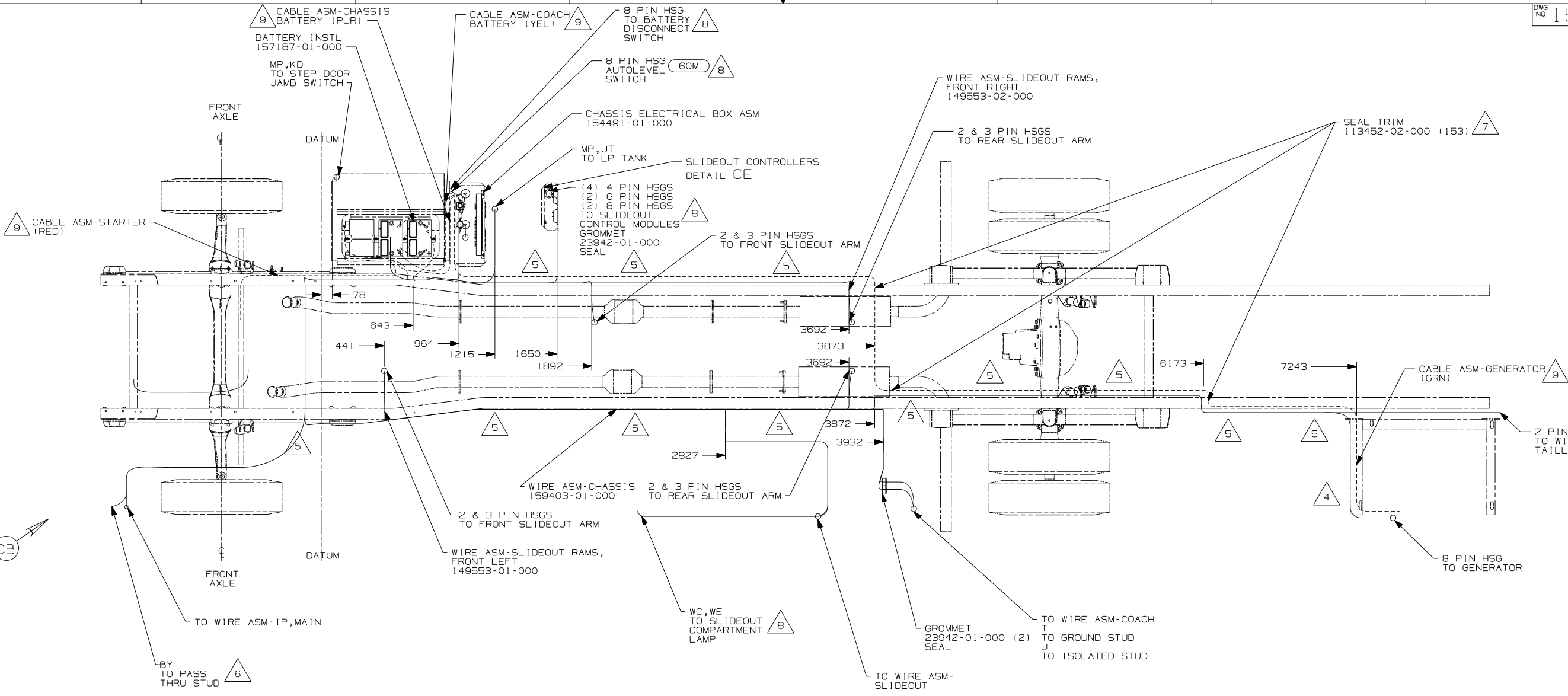
THIRD ANGLE PROJECTION

DO NOT SCALE DRAWING

TITLE: WIRING INSTL-CHASSIS

SHEET 1 of 3 PART NO 159383 REV

REF: 1 6/30/2006



- 9** SEE BATTERY INSTALLATION FOR ADDITIONAL INFORMATION.
- 8** SEE WIRING INSTL-12V, BODY FOR ADDITIONAL INFORMATION.
- 7** COVER SHARP EDGES WHERE WIRE CROSSES FRAME RAIL.
- 6** SEE WIRING INSTL-FRONT END FOR ADDITIONAL INFORMATION.
- 5** CLAMP 83610-01-000, SCREW G11-10-16B.
- 4** WIRE TIE 8343-04-000. FASTEN EVERY 600mm MINIMUM.

3. ALL DIMENSIONS ARE FROM DATUM UNLESS OTHERWISE SPECIFIED.

2. SECURE CONDUIT 41953, TAB AS REQUIRED, OVER ALL WIRES IN CONTACT WITH SHARP EDGES.

1. LEGEND: — WINNEBAGO: - - - - - CABLE: - - - - - CHASSIS SUPPLIED WIRING.

NOTES:

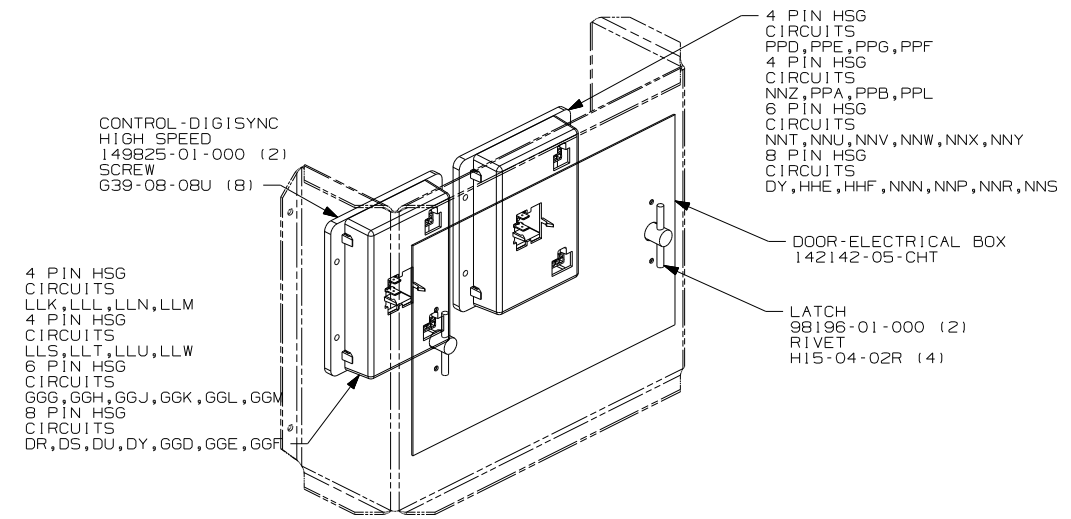
- 60M** HYDRAULIC LEVEL JACKS-AUTO
- 265** CODES/STANDARDS - CSA/CMVSS
- IPN** WORKHORSE CHASSIS - 20,700# GVWR
- IB1** CODES/STANDARDS - USA

IB1 IPN 265

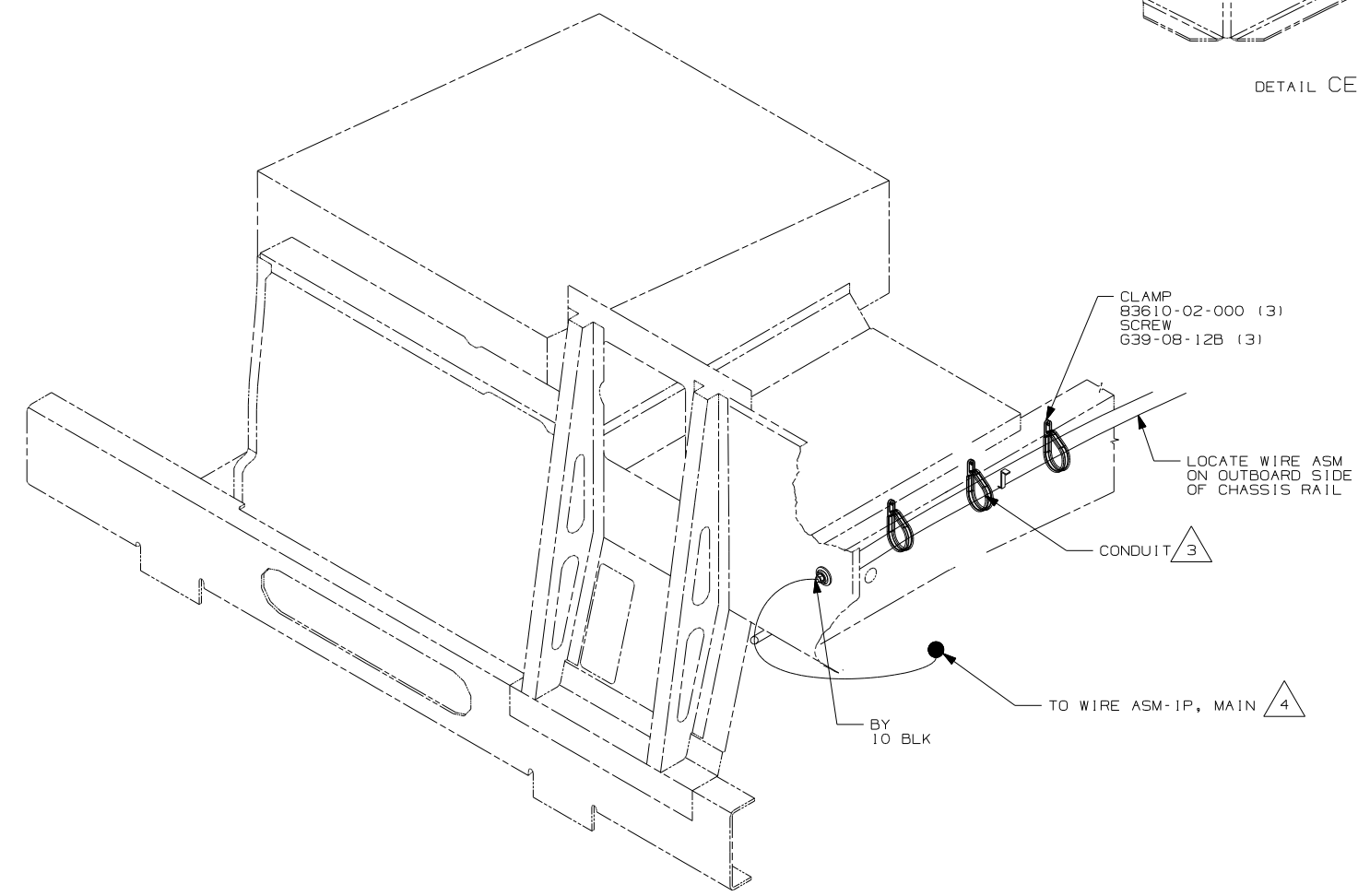
FOR ELECTRICAL TORQUE SPECIFICATIONS SEE DWG NO. 128783-01-000

FOR ELECTRICAL CALLOUTS SEE DWG NO. 121339-01-000

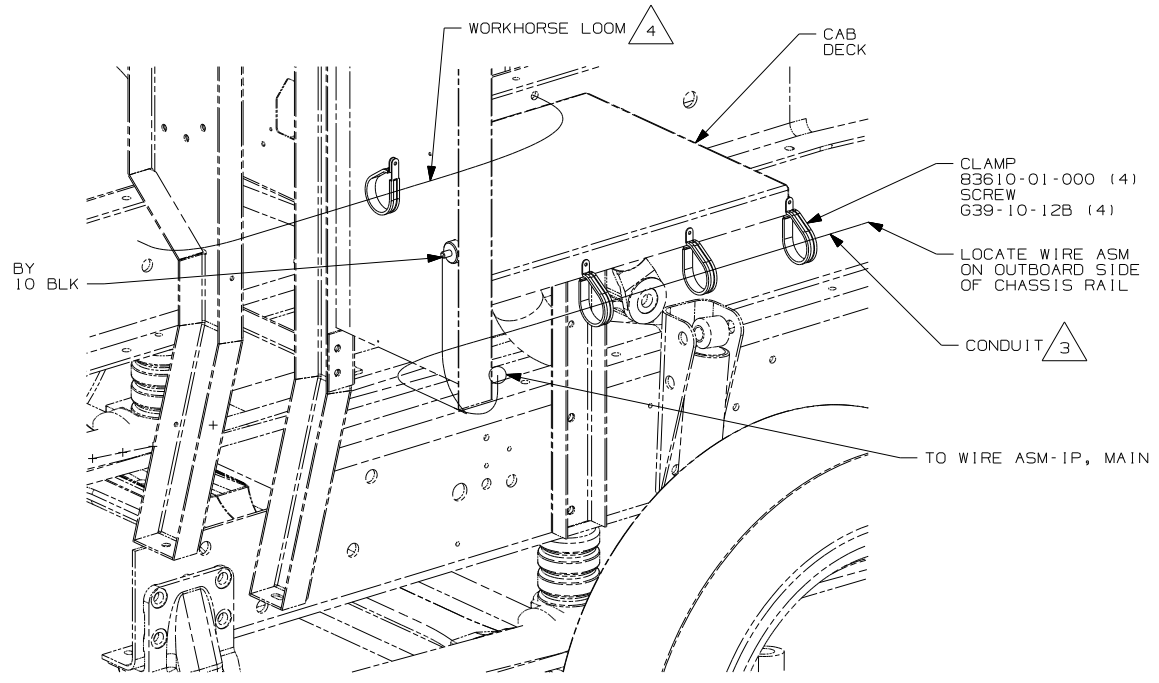
FIRST USED	07 D34A	
TITLE:	DO NOT SCALE DRAWING	
	WIRING INSTL-CHASSIS	
SHEET 2	PART NO	REV
	159383	



DETAIL CE



VIEW CA (16M)



VIEW CB (1PN)

- (265) CODES/STANDARDS - CSA/CMVSS
- (1PN) WORKHORSE 20,700#
- (1B1) CODES/STANDARDS - USA
- (16M) FORD CHASSIS - 20,500# GVWR

- 4. CLAMP WORKHORSE ENGINE HARNESS TO CAB DECK TO PROTECT HARNESS FROM DAMAGE.
- 3. COVER WITH CONDUIT 41953-10-000 AND 41953-11-000 AS REQUIRED.
- 2. CONNECT CABLES TO COACH SIDE OF BATTERY DISCONNECT WHEN BATTERY DISCONNECT IS USED.
- 1. LEGEND: — WINNEBAGO: - - - - - CABLE: - - - - - CHASSIS SUPPLIED WIRING.

NOTES:

FOR ELECTRICAL TORQUE SPECIFICATIONS SEE DWG NO. 128783-01-000

(X-X) FOR ELECTRICAL CALLOUTS SEE DWG NO. 121339-01-000

FIRST USED	
07 D34A	
DO NOT SCALE DRAWING	
TITLE: WIRING INSTL-CHASSIS	
SHEET 3	PART NO 159383 REV