



DANGER

Danger of electrical shock, burns or death. Always remove all power sources before attempting any repair, service or diagnostic work. Power can be present from shore power, generator, inverter or battery. All power sources must be disabled and secured before performing any service.

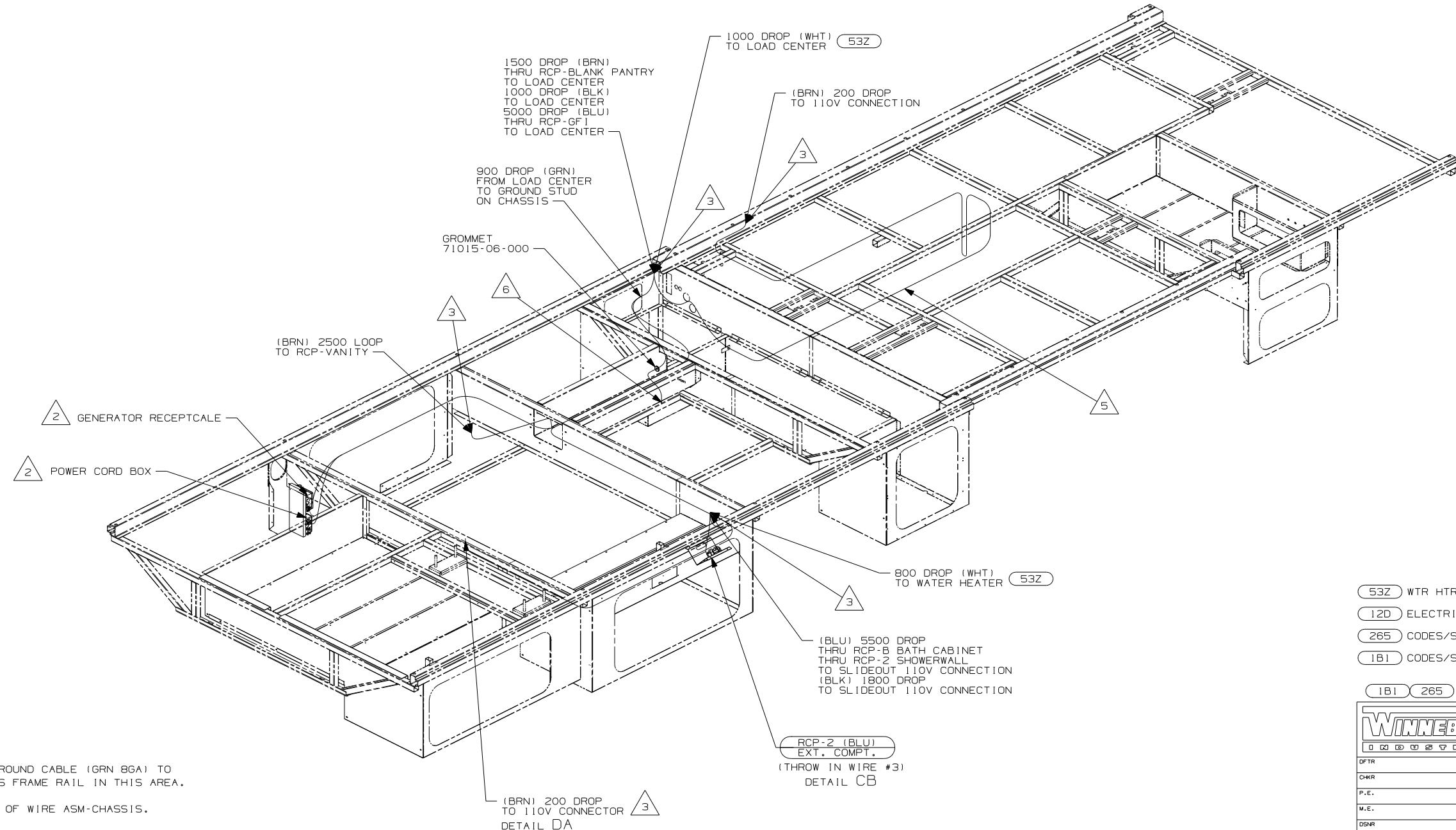


CAUTION

If you lack the skills, tools or equipment to perform diagnostic or repair work leave such work to an authorized Winnebago Industries dealer or other qualified shop.

DRAWING NO.	FEATURE
159381-11	(1B1) (12D)
159381-15	(265) (12D)

RELEASE	REV DATE	DWG NO	159381
REV ZONE	REVISION RECORD	DATE	DTR-0R16



- 6 CONNECT LOAD CENTER GROUND CABLE (GRN 8GA) TO GROUND BOLT ON CHASSIS FRAME RAIL IN THIS AREA.
- 5 SLIDEOUT WIRE IS PART OF WIRE ASM-CHASSIS.
4. ALL WIRES TO BE SECURED WITH CLAMP 10495 OR 10497 OR WIRE TIE 8343 OR 108046 EVERY 600MM, USE SCREW G67-XX-XXX OR G56-XX-XXX AS APPROPRIATE FOR INSTALLATION.
- 3 WIRE ROUTES THRU FLOOR IN THIS AREA.
- 2 SEE LOAD CENTER/ATS FOR ADDITIONAL INFORMATION.
1. WIRES ROUTED UNDER FLOOR.

- (53Z) WTR HTR-6GAL/110V/LP/MTR/AUTO
- (12D) ELECTRICAL SYSTEM 30 AMP
- (265) CODES/STANDARDS-CSA/CMVSS
- (1B1) CODES/STANDARDS USA

WINNEBAGO COPYRIGHT 2006 WINNEBAGO INDUSTRIES, INC.

DTR	ORIG. DATE
CHKR	ALL DIMENSIONS ARE IN MILLIMETERS
P.E.	
M.E.	FIRST USED
DSNR	07 D34A

UNSPECIFIED TOLERANCES ARE: MATERIAL:

WHOLE DIM (X)	: 3
ONE-PLACE (X.X)	: 1.5
TWO-PLACE (X.XX)	: 0.50
ANGLE	: 1°

THIRD ANGLE PROJECTION

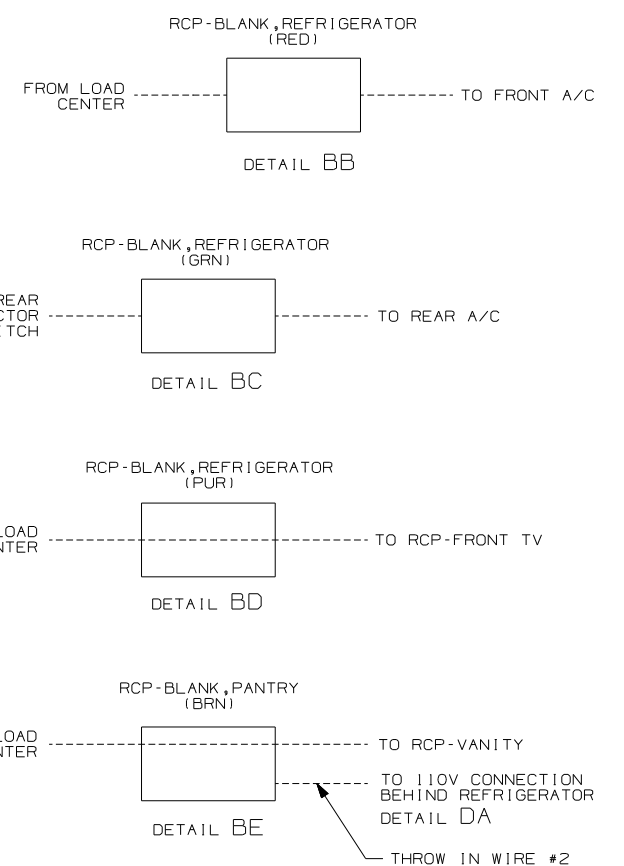
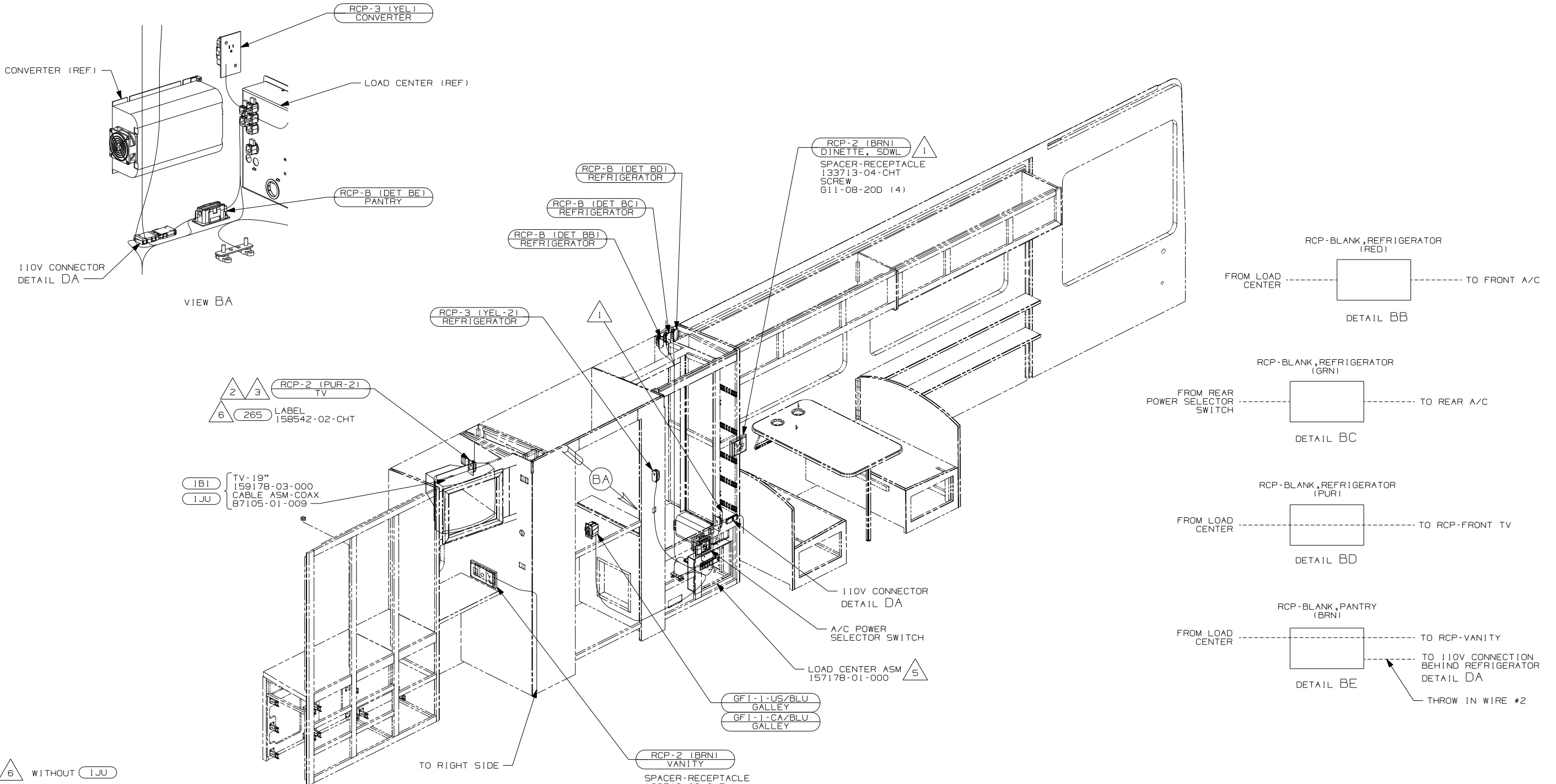
FOR ELECTRICAL TORQUE SPECIFICATIONS SEE DWG NO. 128783-01-000

(X-X) FOR ELECTRICAL CALLOUTS SEE DWG NO. 121339-01-000

DO NOT SCALE DRAWING

TITLE: WIRING INSTL-BODY, 110V

SHEET 1 of 4 PART NO 159381 REV



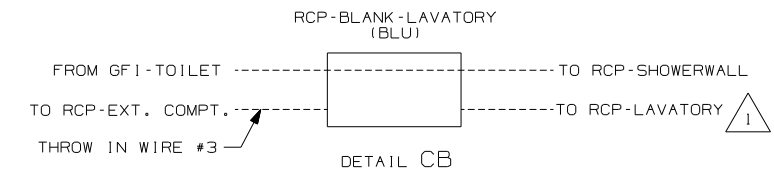
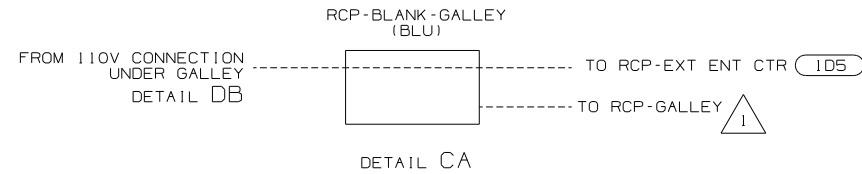
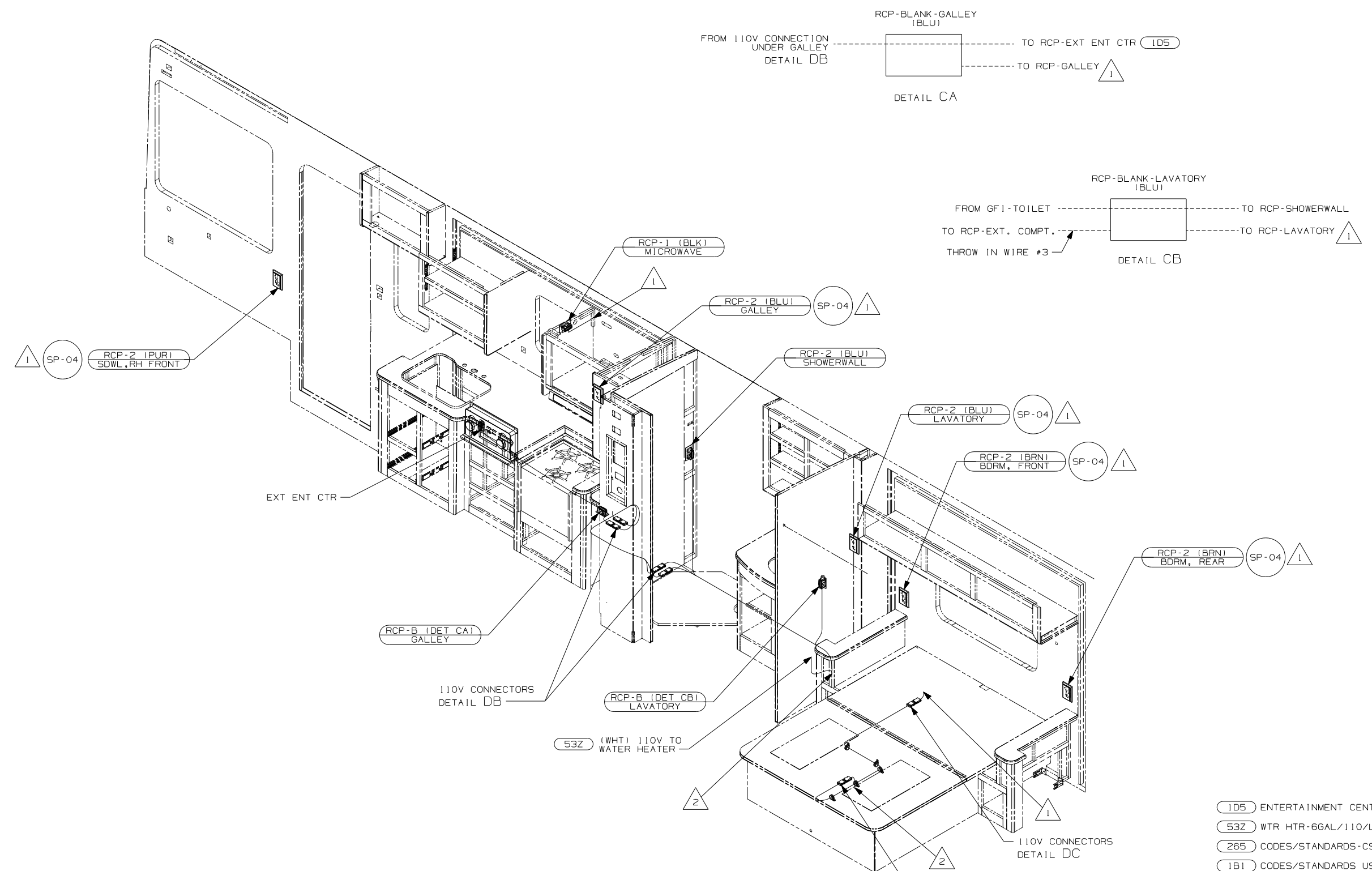
- NOTES:
- △ 6 WITHOUT IJU
 - △ 5 LOAD CENTER GROUND MUST BE ATTACHED DIRECTLY TO CHASSIS GROUND
 - 4. ALL WIRES TO BE SECURED WITH CLAMP 10495 OR 10497 OR WIRE TIE 8343 OR 108046 EVERY 600MM, USE SCREW G67-XX-XXX OR G56-XX-XXX AS APPROPRIATE FOR INSTALLATION.
 - △ 3 RCP-2 MOVES TO CABINET ASM-WARDROBE WITH FEATURE IJU
 - △ 2 WIRE ROUTED IN ROOF.
 - △ 1 WIRE ROUTED IN SIDEWALL.

- IJU TV (REAR)-19"COLOR, STEREO
- 265 CODES/STANDARDS-CSA/CMVSS
- IB1 CODES/STANDARDS USA

FIRST USED	07 D34A
DO NOT SCALE DRAWING	
TITLE:	WIRING INSTL-BODY, 110V
SHEET 2	PART NO 159381 REV

FOR ELECTRICAL TORQUE SPECIFICATIONS SEE DWG NO. 128783-01-000

FOR ELECTRICAL CALLOUTS SEE DWG NO. 121339-01-000



1 SP-04 RCP-2 (PUR) SOWL, RH FRONT

RCP-1 (BLK) MICROWAVE 1

RCP-2 (BLU) GALLEY SP-04 1

RCP-2 (BLU) SHOWERWALL

RCP-2 (BLU) LAVATORY SP-04 1

RCP-2 (BRN) BDRM, FRONT SP-04 1

RCP-2 (BRN) BDRM, REAR SP-04 1

RCP-B (DET CA) GALLEY

RCP-B (DET CB) LAVATORY

53Z (WHT) 110V TO WATER HEATER

110V CONNECTORS DETAIL DB

110V CONNECTORS DETAIL DC

110V CONNECTORS DETAIL DC

3. ALL WIRES TO BE SECURED WITH CLAMP 10495 OR 10497 OR WIRE TIE 8343 OR 108046 EVERY 600MM, USE SCREW G67-XX-XXX OR G56-XX-XXX AS APPROPRIATE FOR INSTALLATION.

2 WIRE ROUTED THRU FLOOR IN THIS AREA.

1 WIRE IN SIDEWALL.

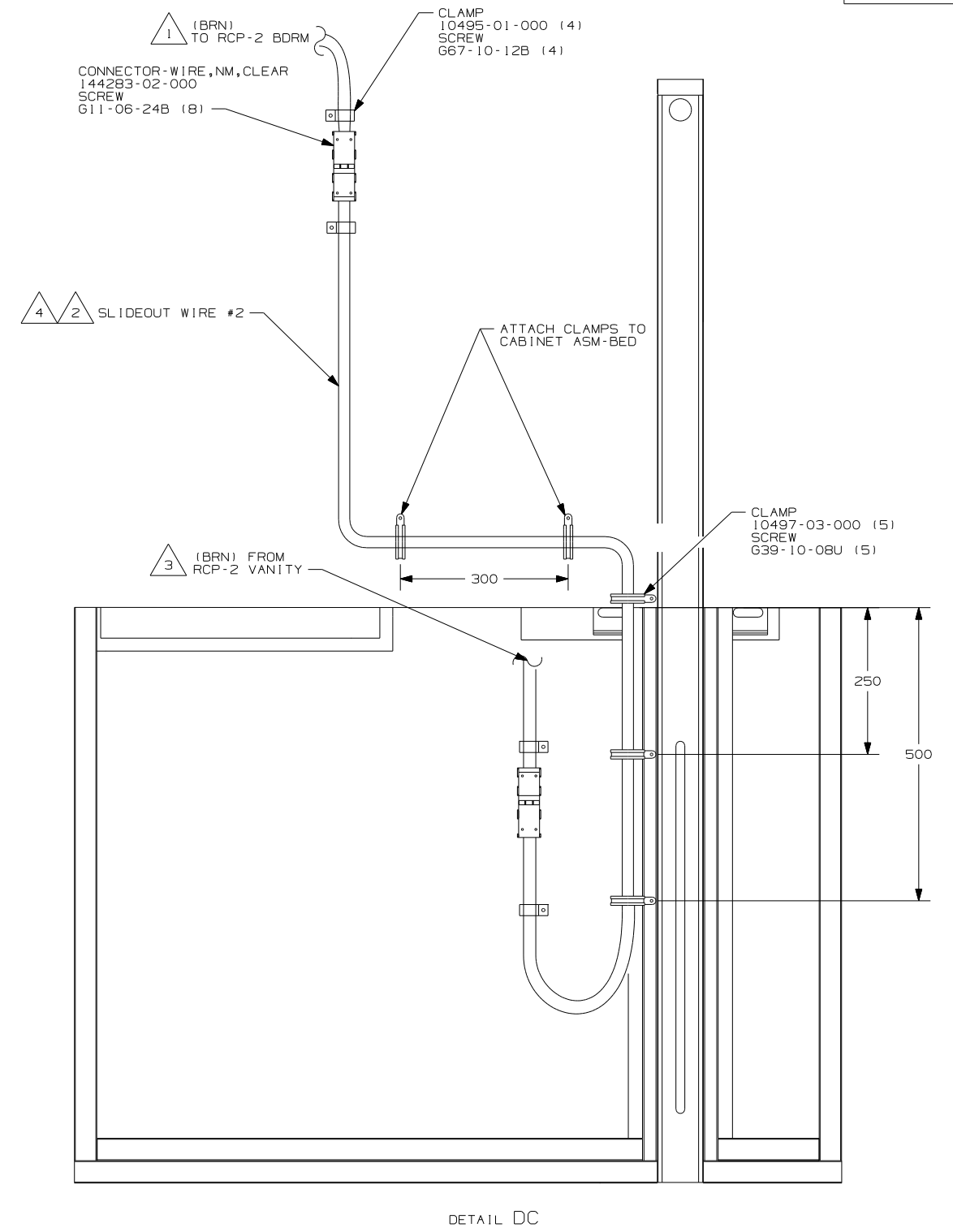
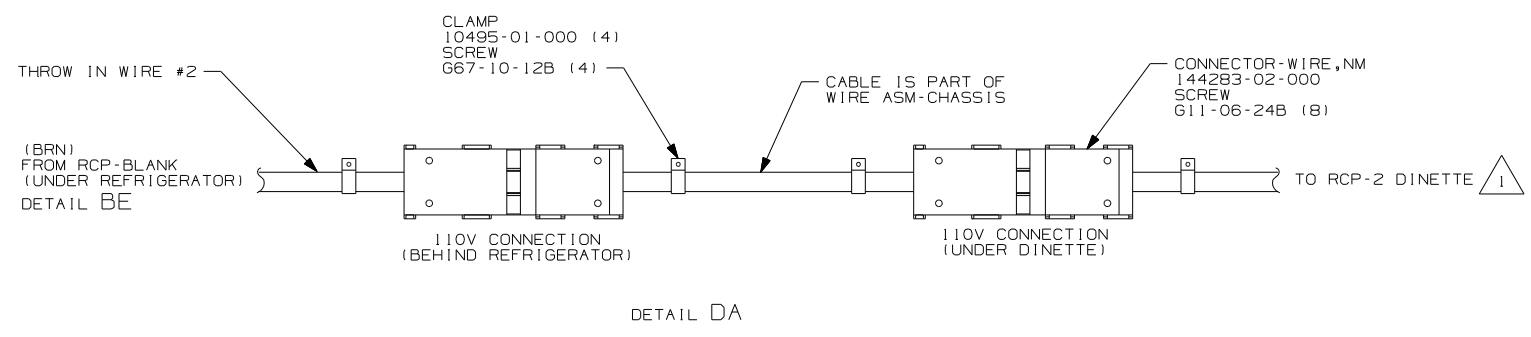
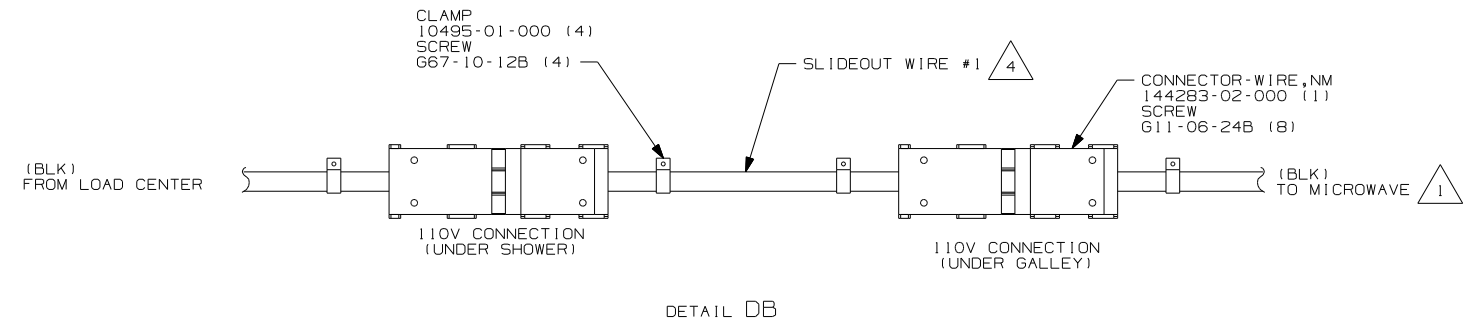
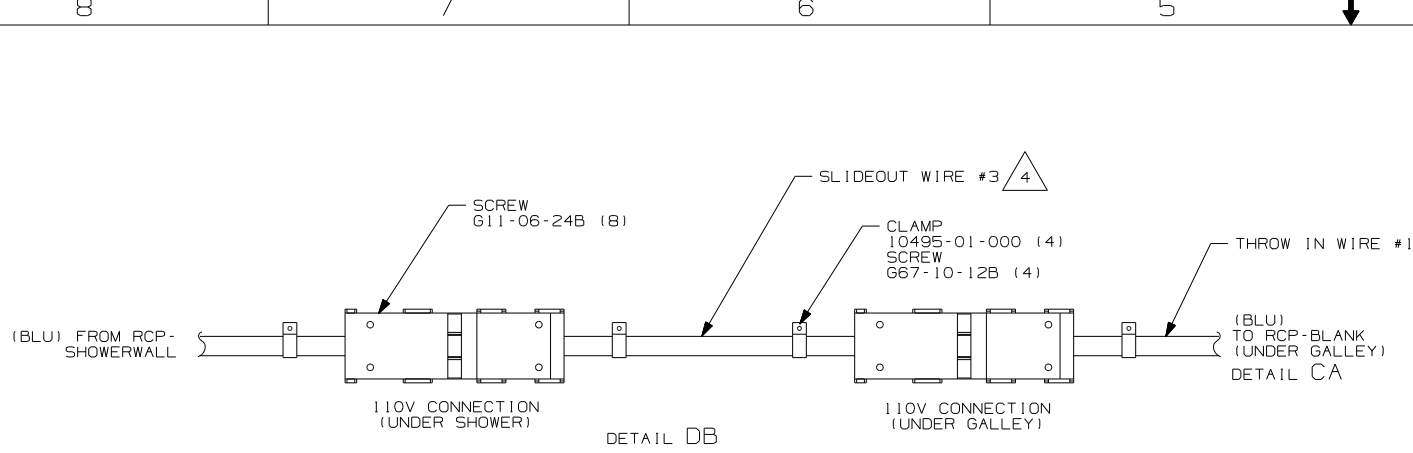
NOTES:

- 1D5 ENTERTAINMENT CENTR/EXT W/CD
- 53Z WTR HTR-66AL/110/LP/MTR/AUTO
- 265 CODES/STANDARDS-CSA/CMVSS
- 1B1 CODES/STANDARDS USA

FIRST USED	
07 D34A	
DO NOT SCALE DRAWING	
TITLE: WIRING INSTL-BODY, 110V	
SHEET 3	PART NO 159381

FOR ELECTRICAL TORQUE SPECIFICATIONS SEE DWG NO. 128783-01-000

FOR ELECTRICAL CALLOUTS SEE DWG NO. 121339-01-000



- NOTES:
- $\triangle 5$ MAKE LOOP AS SMALL AS POSSIBLE WHEN SLIDEOUT IS COMPLETELY RETRACTED.
 - $\triangle 4$ SEE LOAD CENTER/ATS ASM FOR ADDITIONAL INFORMATION.
 - $\triangle 3$ WIRE IS ROUTED THROUGH FLOOR.
 - $\triangle 2$ RUN 12V LOOM THROUGH CLAMPS WITH SLIDEOUT WIRE #2.
 - $\triangle 1$ WIRE ROUTED IN SIDEWALL.

FOR ELECTRICAL TORQUE SPECIFICATIONS SEE DWG NO. 128783-01-000

FOR ELECTRICAL CALLOUTS SEE DWG NO. 121339-01-000

FIRST USED		07 D34A	
DO NOT SCALE DRAWING			
TITLE: WIRING INSTL-BODY, 110V			
SHEET 4	PART NO	159381	REV