



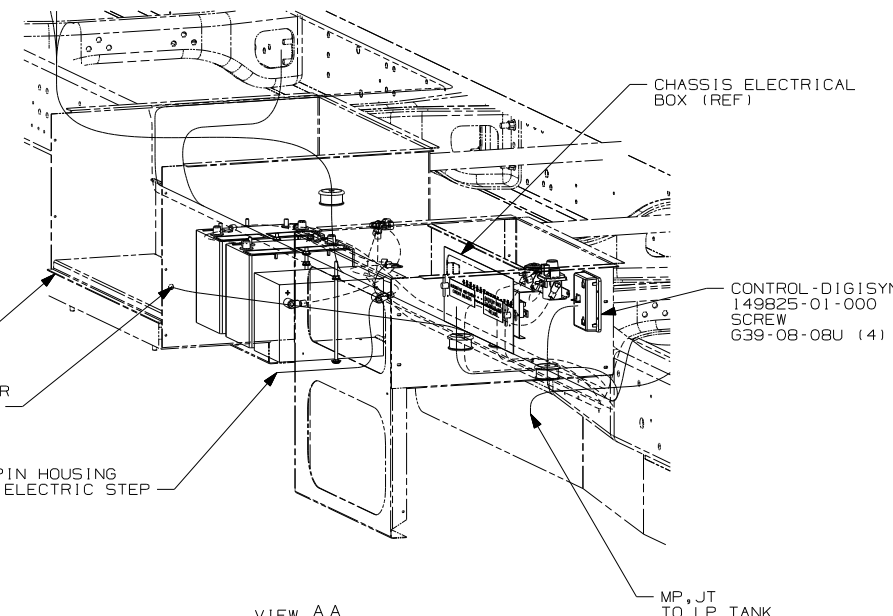
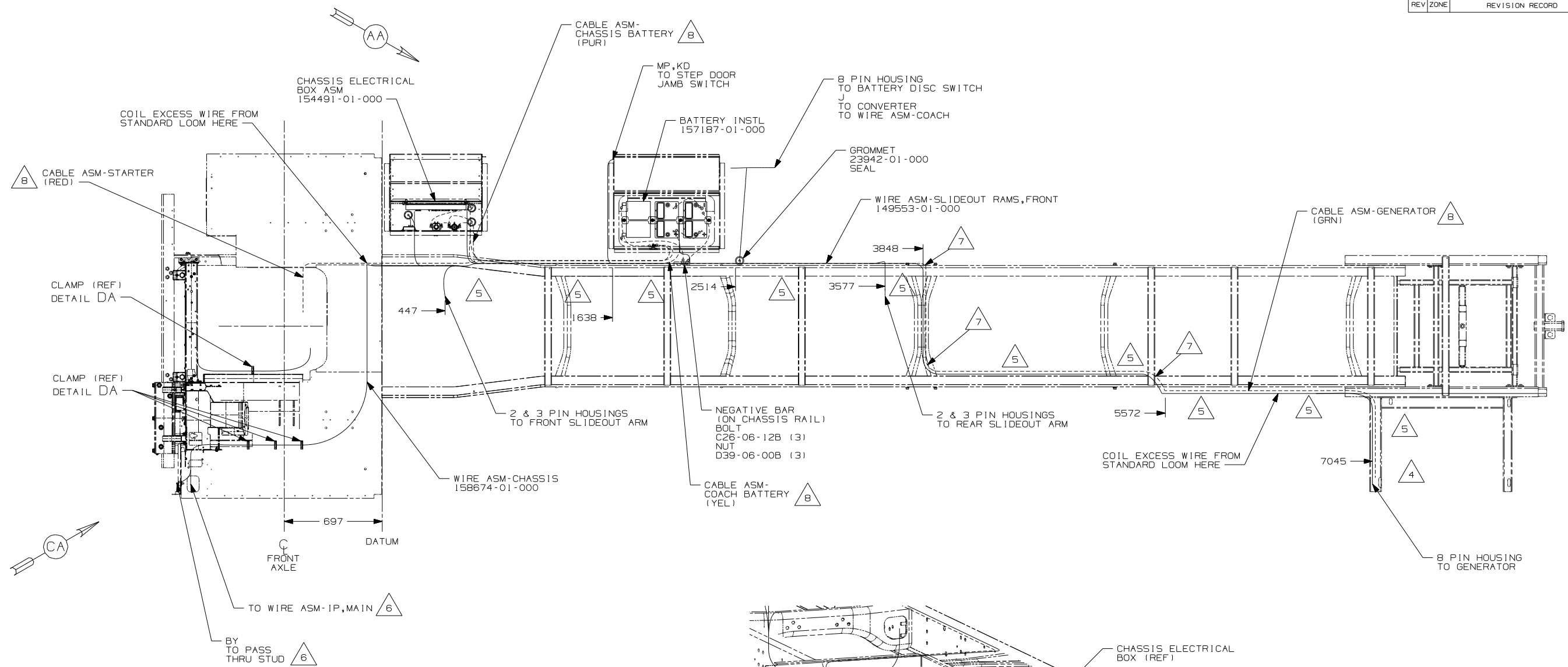
**DANGER**

**Danger of electrical shock, burns or death.** Always remove all power sources before attempting any repair, service or diagnostic work. Power can be present from shore power, generator, inverter or battery. All power sources must be disabled and secured before performing any service.



**CAUTION**

If you lack the skills, tools or equipment to perform diagnostic or repair work leave such work to an authorized Winnebago Industries dealer or other qualified shop.



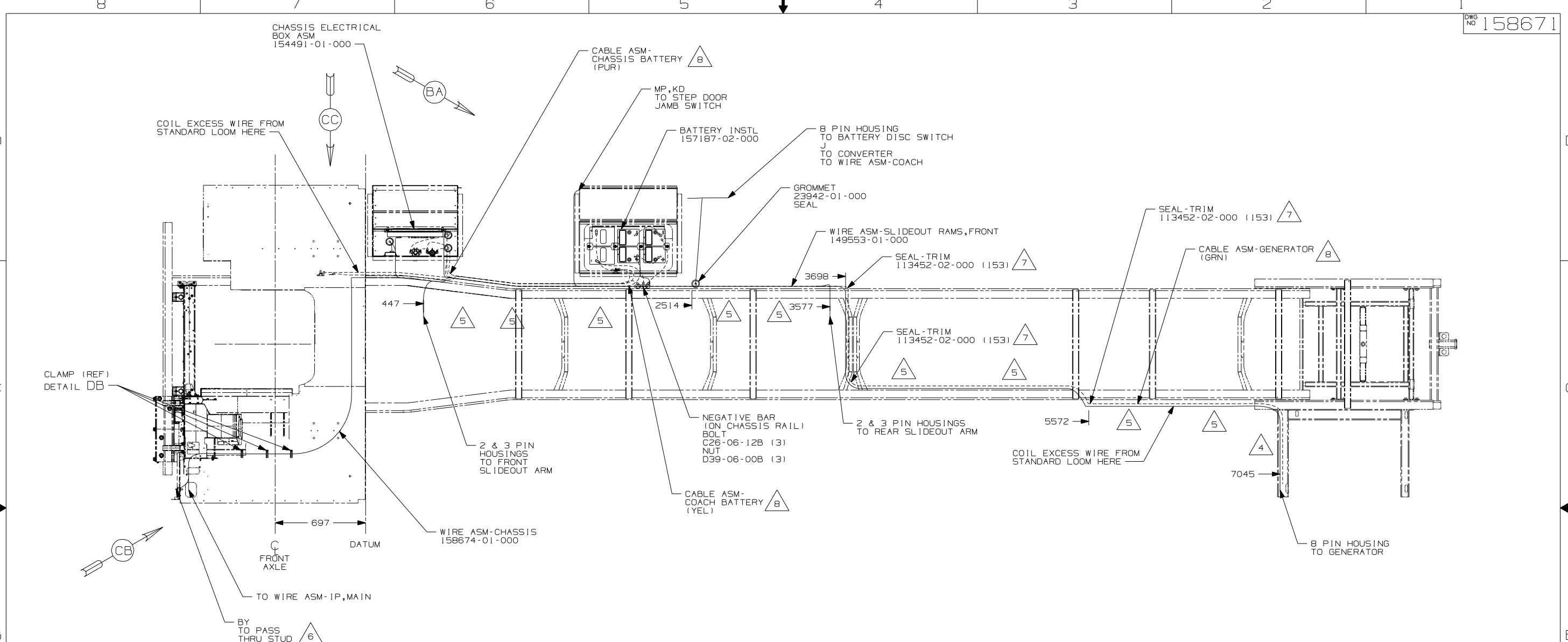
- 8 SEE BATTERY INSTL FOR ADDITIONAL INFORMATION.
- 7 COVER SHARP EDGES WHERE WIRE CROSSES FRAME RAIL.
- 6 SEE WIRING INSTL-FRONT END FOR ADDITIONAL INFORMATION.
- 5 CLAMP 83610-01-000, SCREW G11-10-16B.
- 4 WIRE TIE 8343-04-000. FASTEN EVERY 600MM MINIMUM.

3. ALL DIMENSIONS ARE FROM DATUM UNLESS OTHERWISE SPECIFIED.
2. SECURE CONDUIT 41953, TAB AS REQUIRED, OVER ALL WIRES IN CONTACT WITH SHARP EDGES.
1. LEGEND: — WINNEBAGO: - - - - - CABLE: - - - - - CHASSIS SUPPLIED WIRING.

NOTES:

- 1PM WORKHORSE CHASSIS-18,000LB.
- 265 CODES/STANDARDS-CSA/CMVSS
- 1B1 CODES/STANDARDS USA

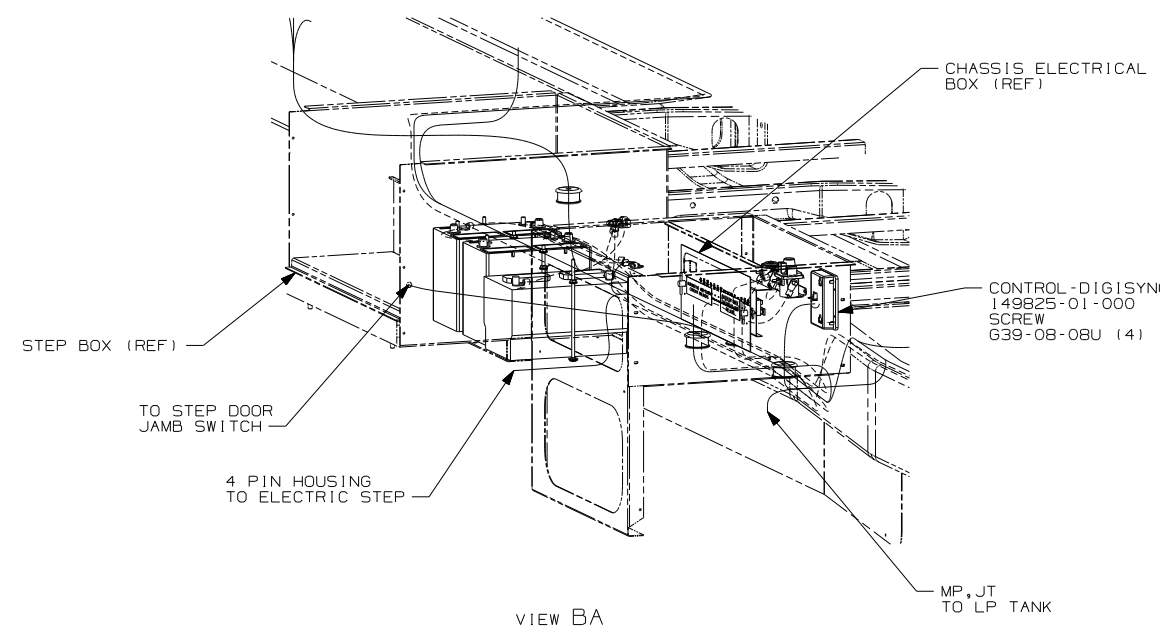
|                             |                                   |   |  |
|-----------------------------|-----------------------------------|---|--|
| <b>WINNEBAGO</b>            |                                   | COPYRIGHT 2006<br>WINNEBAGO<br>INDUSTRIES, INC. |  |
| DFTR                        | ORIG. DATE                        | 07 D33T   |  |
| CHKR                        | ALL DIMENSIONS ARE IN MILLIMETERS |   |  |
| P.E.                        |                                   |   |  |
| M.E.                        | FIRST USED                        |   |  |
| DSNR                        |                                   |   |  |
| UNSPECIFIED TOLERANCES ARE: |                                   | MATERIAL:                                       |  |
| WHOLE DIM (X)               | : 3                               |   |  |
| ONE-PLACE (X.X)             | : 1.5                             |   |  |
| TWO-PLACE (X.XX)            | : 0.50                            |   |  |
| ANGLE                       | : 1°                              |   |  |
| THIRD ANGLE PROJECTION      |                                   |   |  |
| DO NOT SCALE DRAWING        |                                   |   |  |
| TITLE: WIRING INSTL-CHASSIS |                                   |   |  |
| SHEET 1 OF 3                | PART NO                           | 158671  |  |
| REF:                        |                                   | 1 6/30/2006                                     |  |



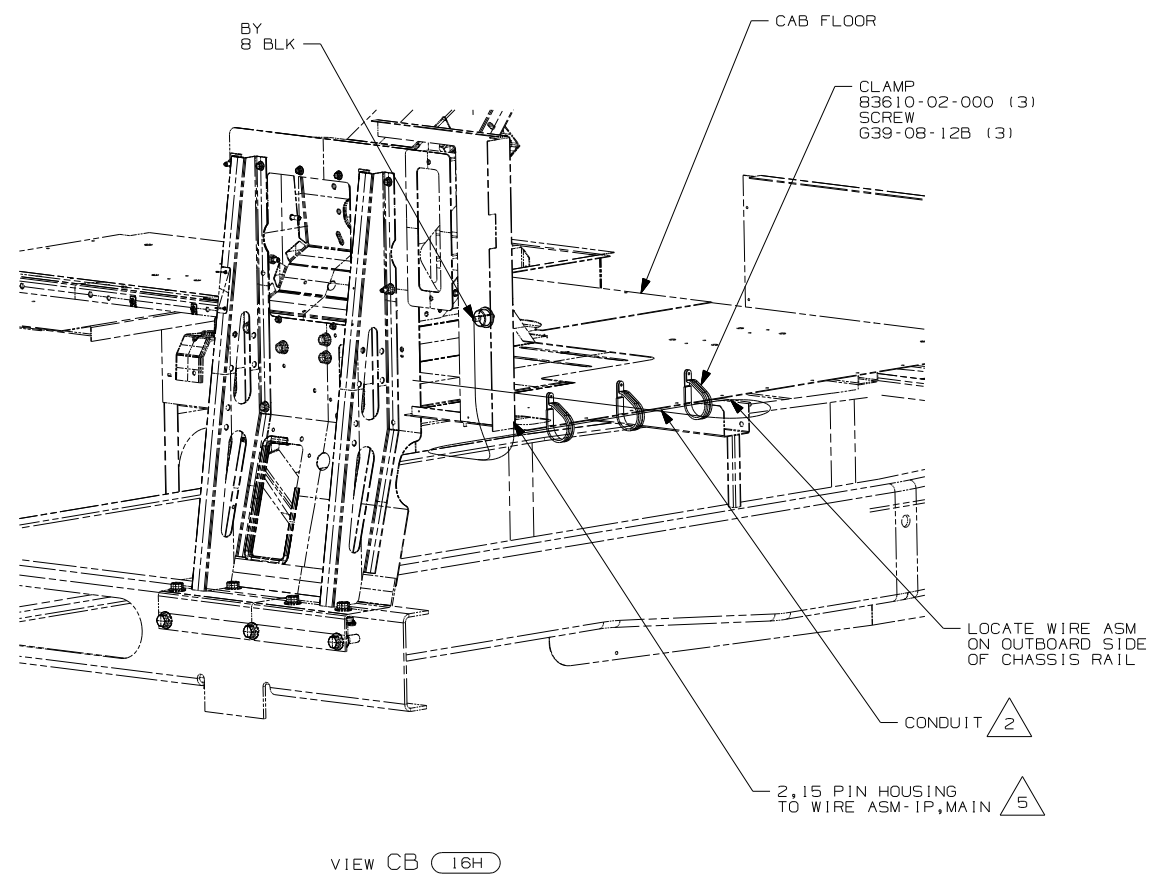
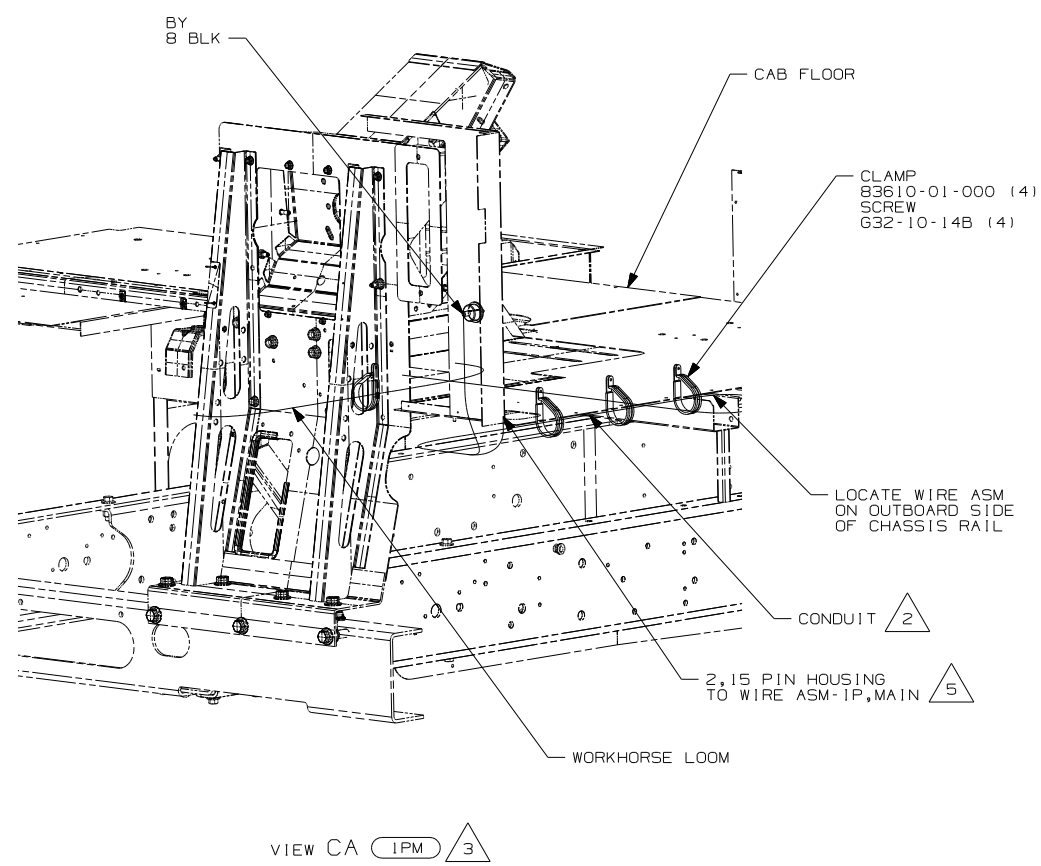
- 8 SEE BATTERY INSTL FOR ADDITIONAL INFORMATION.
  - 7 COVER SHARP EDGES WHERE WIRE CROSSES FRAME RAILS.
  - 6 SEE WIRING INSTL-FRONT END FOR ADDITIONAL INFORMATION.
  - 5 CLAMP 83610-01-000, SCREW G11-10-16B.
  - 4 WIRE TIE 8343-04-000. FASTEN EVERY 600MM MINIMUM.
3. ALL DIMENSIONS ARE FROM DATUM UNLESS OTHERWISE SPECIFIED.
2. SECURE CONDUIT 41953, TAB AS REQUIRED, OVER ALL WIRES IN CONTACT WITH SHARP EDGES.

1. LEGEND: — WINNEBAGO: - - - - - CABLE: - - - - - CHASSIS SUPPLIED WIRING.

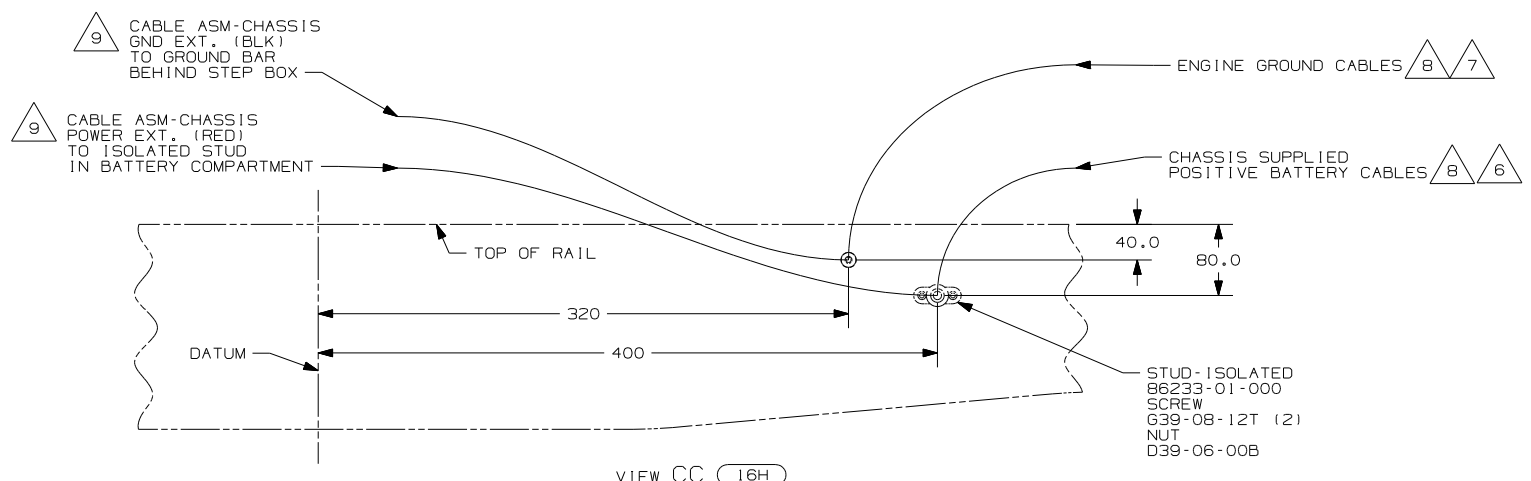
NOTES:



|                                |                              |     |
|--------------------------------|------------------------------|-----|
| 16H                            | FORD CHASSIS 18,000#/V10 ENG |     |
| 265                            | CODES/STANDARDS-CSA/CMVSS    |     |
| 1B1                            | CODES/STANDARDS USA          |     |
| 1B1                            | 265                          | 16H |
| FIRST USED<br>07 D33T          |                              |     |
| DO NOT SCALE DRAWING           |                              |     |
| TITLE:<br>WIRING INSTL-CHASSIS |                              |     |
| SHEET 2                        | PART NO<br>158671            | REV |



- 9 SEE BATTERY INSTL FOR ADDITIONAL INFORMATION.
- 8 SUPPLIED WITH CHASSIS
- 7 CUT CHASSIS SUPPLIED BATTERY GROUND CABLE 700mm FROM BATTERY TERMINAL AND ADD TERMINAL 8348-01-000 TO CUT END.
- 6 CUT CHASSIS SUPPLIED POSITIVE BATTERY CABLE 150mm FROM BATTERY TERMINAL END, DISCARD TERMINAL END AND ADD TERMINAL 113738-01-000 TO CUT END. COIL EXCESS CABLE ALONG FRAME RAIL JUST BEHIND THE RADIATOR AND TIE UP WITH TIE-WIRE 8343-04-000.
- 5 ROUTE WIRE THRU HOLE IN CAB FLOOR.
- 4. CONNECT CABLES TO COACH SIDE OF BATTERY DISCONNECT WHEN BATTERY DISCONNECT IS USED.
- 3 ALL GROUND WIRE TO BE COVERED WITH TUBING 8041-02-000.
- 2 COVER WITH CONDUIT 41953-10-000 AND 41953-11-000 AS REQUIRED.
- 1. CUT OFF EXCESS END OF WIRE TIE.



- 16H FORD CHASSIS 18,000#/V10 ENG
- IPM WORKHORSE CHASSIS-18,000LB.
- 265 CODES/STANDARDS-CSA/CMVSS
- 1B1 CODES/STANDARDS USA

|            |                      |        |
|------------|----------------------|--------|
| FIRST USED | 07 D33T              |        |
| TITLE      | DO NOT SCALE DRAWING |        |
|            | WIRING INSTL-CHASSIS |        |
| SHEET 3    | PART NO              | 158671 |
|            | REV                  |        |