



DANGER

Danger of electrical shock, burns or death. Always remove all power sources before attempting any repair, service or diagnostic work. Power can be present from shore power, generator, inverter or battery. All power sources must be disabled and secured before performing any service.

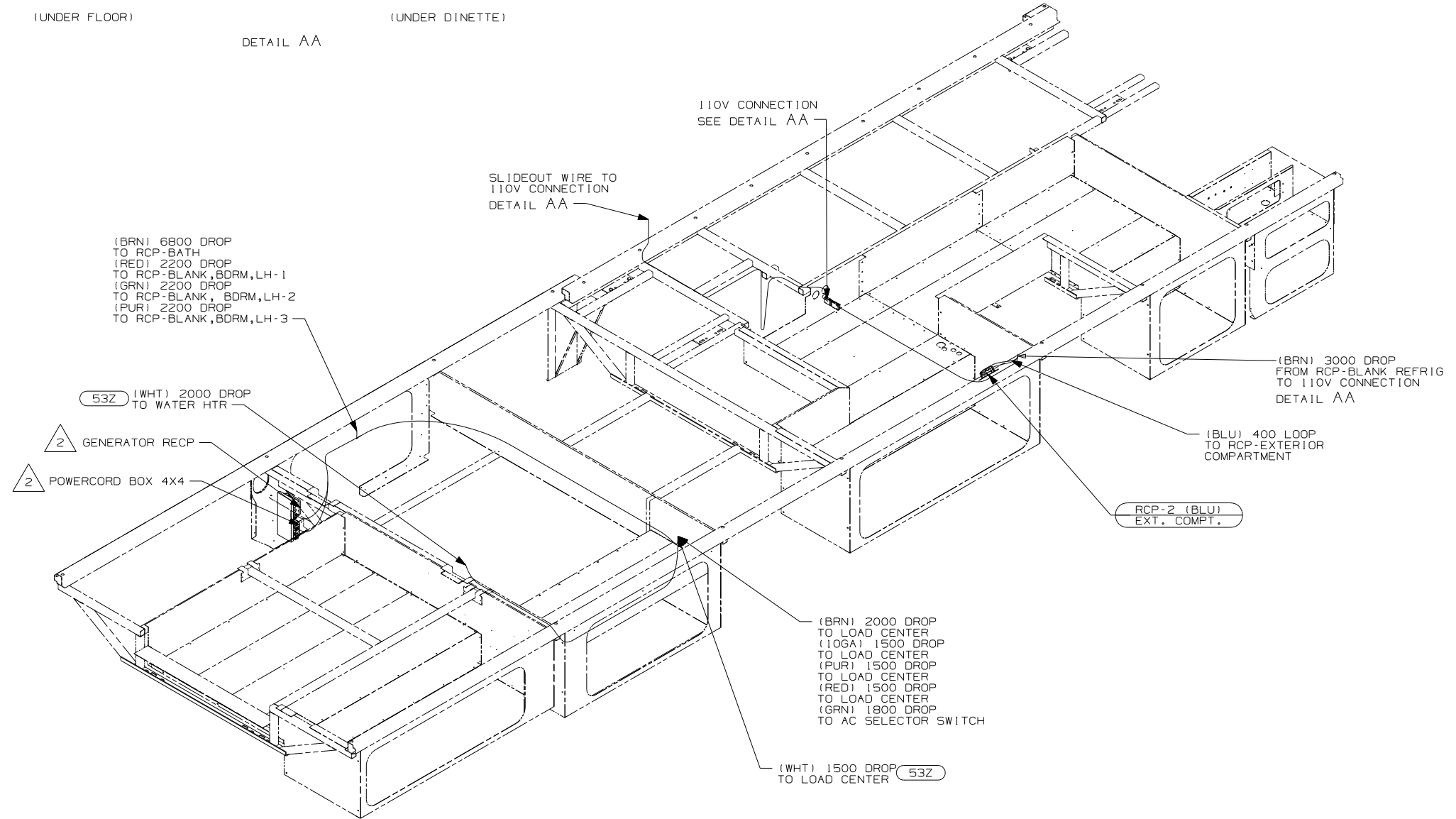
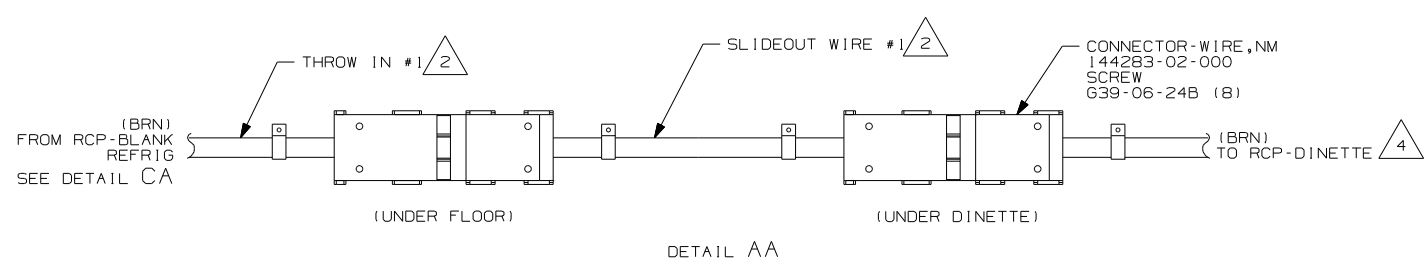


CAUTION

If you lack the skills, tools or equipment to perform diagnostic or repair work leave such work to an authorized Winnebago Industries dealer or other qualified shop.

DWG NO	FEATURE
158669-11	1B1 12D
158669-15	265 12D

RELEASE	REV DATE	DWG NO
A		158669
REV ZONE	REVISION RECORD	DATE DFR-ORIG



(BRN) 6800 DROP TO RCP-BATH
 (RED) 2200 DROP TO RCP-BLANK, BDRM, LH-1
 (GRN) 2200 DROP TO RCP-BLANK, BDRM, LH-2
 (PUR) 2200 DROP TO RCP-BLANK, BDRM, LH-3

53Z (WHT) 2000 DROP TO WATER HTR

2 GENERATOR RECP

2 POWERCORD BOX 4X4

110V CONNECTION SEE DETAIL AA

SLIDEOUT WIRE TO 110V CONNECTION DETAIL AA

(BRN) 3000 DROP FROM RCP-BLANK REFRIG TO 110V CONNECTION DETAIL AA

(BLU) 400 LOOP TO RCP-EXTERIOR COMPARTMENT

RCP-2 (BLU) EXT. COMPT.

(BRN) 2000 DROP TO LOAD CENTER
 (10GA) 1500 DROP TO LOAD CENTER
 (PUR) 1500 DROP TO LOAD CENTER
 (RED) 1500 DROP TO LOAD CENTER
 (GRN) 1800 DROP TO AC SELECTOR SWITCH

(WHT) 1500 DROP TO LOAD CENTER 53Z

- 53Z WTR HTR-6GAL/110/LP/MTR/AUTO
- 12D ELECTRICAL SYSTEM 30 AMP
- 265 CODES/STANDARDS-CSA/CMVSS
- 1B1 CODES/STANDARDS USA

1B1 265



DFTR	ORIG. DATE
CHKR	ALL DIMENSIONS ARE IN MILLIMETERS
P.E.	
M.E.	FIRST USED
DSNR	07 D33T

UNSPECIFIED TOLERANCES ARE:	MATERIAL:
WHOLE DIM (X) :	
ONE-PLACE (X.X) :	
TWO-PLACE (X.XX) :	
ANGLE :	
THIRD ANGLE PROJECTION	

DO NOT SCALE DRAWING

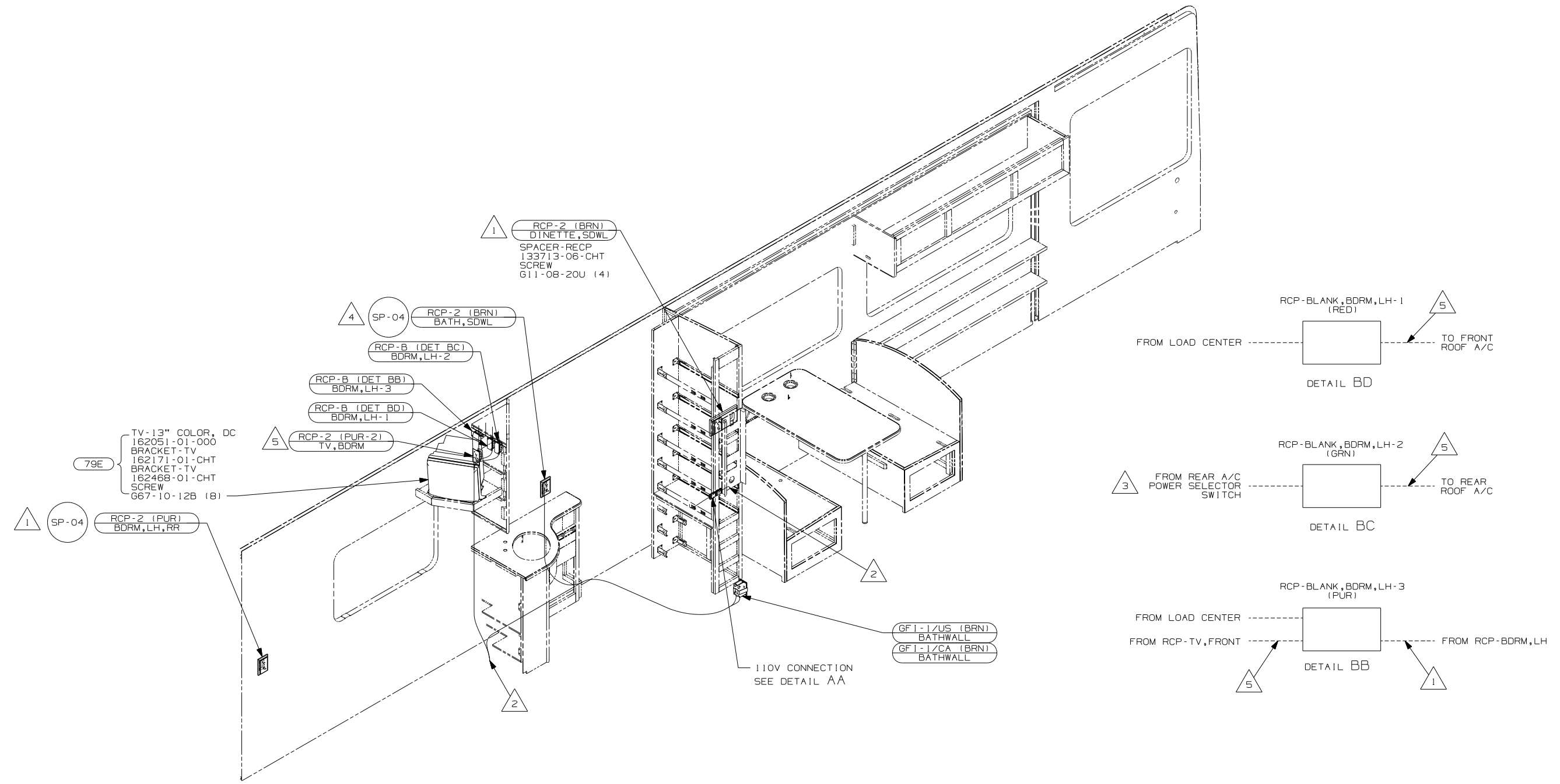
TITLE:	WIRING INSTL-BODY, 110V
SHEET 1 OF 3	PART NO 158669 REV

FOR ELECTRICAL TORQUE SPECIFICATIONS SEE DWG NO. 128783-01-000

FOR ELECTRICAL CALLOUTS SEE DWG NO. 121339-01-000

- 4 WIRE ROUTED IN SIDEWALL.
3. ALL WIRES TO BE SECURED WITH CLAMP 10495 OR 10497 OR WIRE TIE 8343 OR 108046 EVERY 600MM, USE SCREW G67-XX-XXX OR G56-XX-XXX AS APPROPRIATE FOR INTALLATION.
- 2 SEE LOAD CENTER/ATS ASM FOR ADDITIONAL INFORMATION.
1. WIRES ROUTED UNDER FLOOR

NOTES:



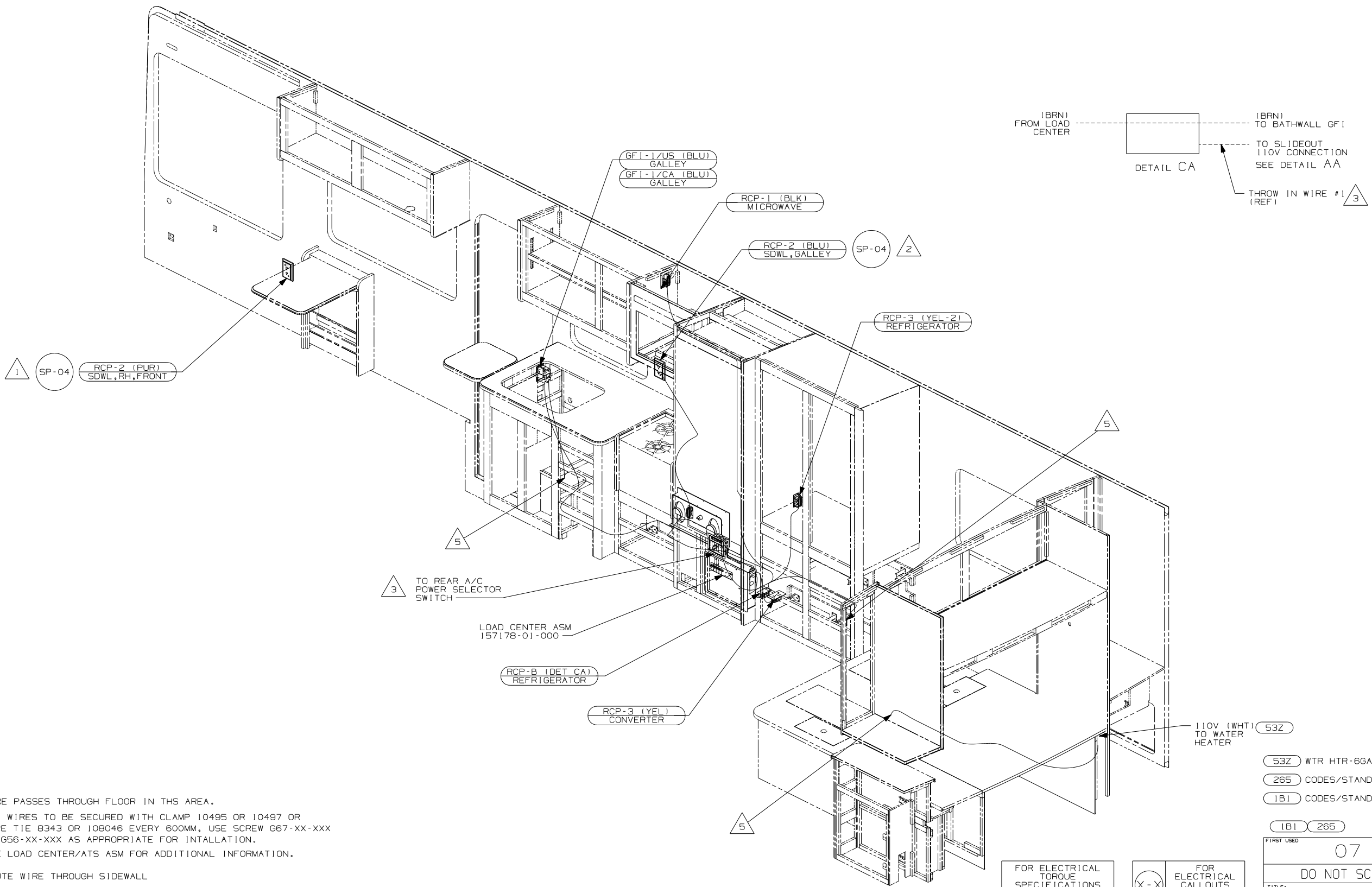
6. ALL WIRES TO BE SECURED WITH CLAMP 10495 OR 10497 OR WIRE TIE 8343 OR 108046 EVERY 600MM, USE SCREW G67-XX-XXX OR G56-XX-XXX AS APPROPRIATE FOR INTALLATION.
- 5** WIRE ROUTED IN ROOF.
 - 4** ROUTE WIRE THROUGH SIDEWALL.
 - 3** SEE LOAD CENTER/ATS ASM FOR ADDITIONAL INFORMATION.
 - 2** WIRE PASSES THROUGH FLOOR IN THIS AREA.
 - 1** WIRE ROUTED IN SIDEWALL

- 79E** TV-13" AC, COLOR W/REMOTE
- 265** CODES/STANDARDS-CSA/CMVSS
- 1B1** CODES/STANDARDS USA

FIRST USED	
07 D33T	
DO NOT SCALE DRAWING	
TITLE: WIRING INSTL-BODY, 110V	
SHEET 2	PART NO 158669

FOR ELECTRICAL TORQUE SPECIFICATIONS SEE DWG NO. 128783-01-000

FOR ELECTRICAL CALLOUTS SEE DWG NO. 121339-01-000



- 5 WIRE PASSES THROUGH FLOOR IN THIS AREA.
- 4. ALL WIRES TO BE SECURED WITH CLAMP 10495 OR 10497 OR WIRE TIE 8343 OR 108046 EVERY 600MM, USE SCREW G67-XX-XXX OR G56-XX-XXX AS APPROPRIATE FOR INTALLATION.
- 3 SEE LOAD CENTER/ATS ASM FOR ADDITIONAL INFORMATION.
- 2 ROUTE WIRE THROUGH SIDEWALL
- 1 WIRE ROUTED IN SIDEWALL

NOTES:

FOR ELECTRICAL TORQUE SPECIFICATIONS SEE DWG NO. 128783-01-000

FOR ELECTRICAL CALLOUTS SEE DWG NO. 121339-01-000

- 53Z WTR HTR-66AL/110/LP/MTR/AUTO
- 265 CODES/STANDARDS-CSA/CMVSS
- 1B1 CODES/STANDARDS USA

FIRST USED	
07 D33T	
DO NOT SCALE DRAWING	
TITLE: WIRING INSTL-BODY, 110V	
SHEET 3	PART NO 158669 REV