



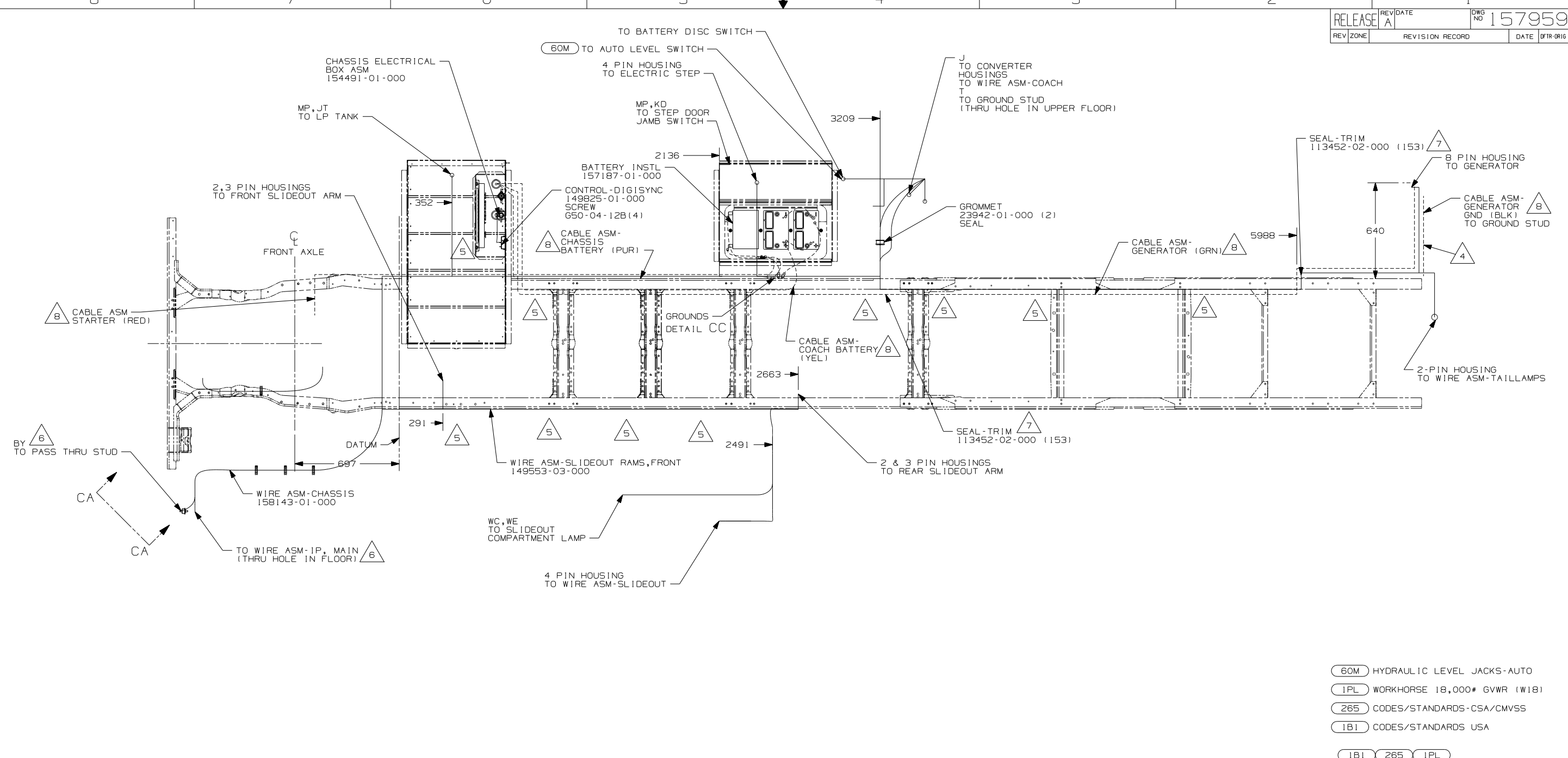
DANGER

Danger of electrical shock, burns or death. Always remove all power sources before attempting any repair, service or diagnostic work. Power can be present from shore power, generator, inverter or battery. All power sources must be disabled and secured before performing any service.



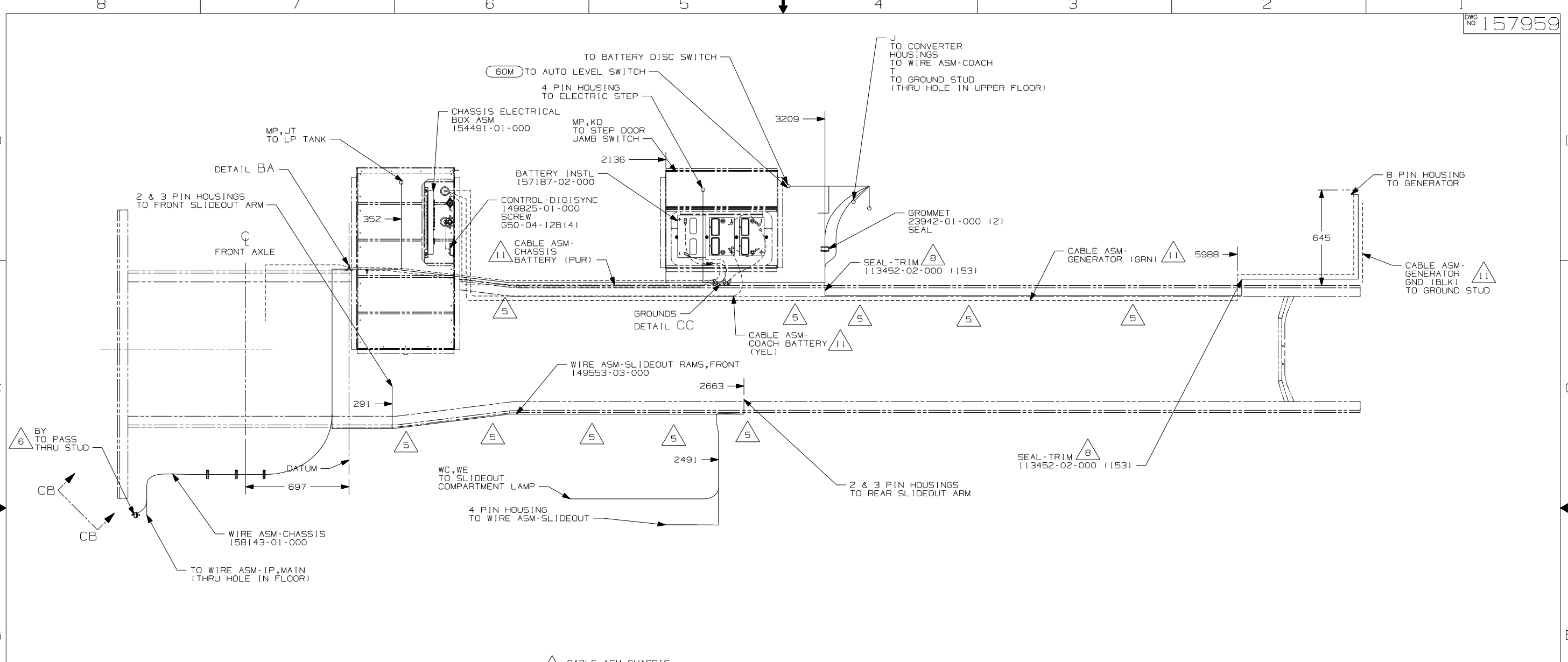
CAUTION

If you lack the skills, tools or equipment to perform diagnostic or repair work leave such work to an authorized Winnebago Industries dealer or other qualified shop.

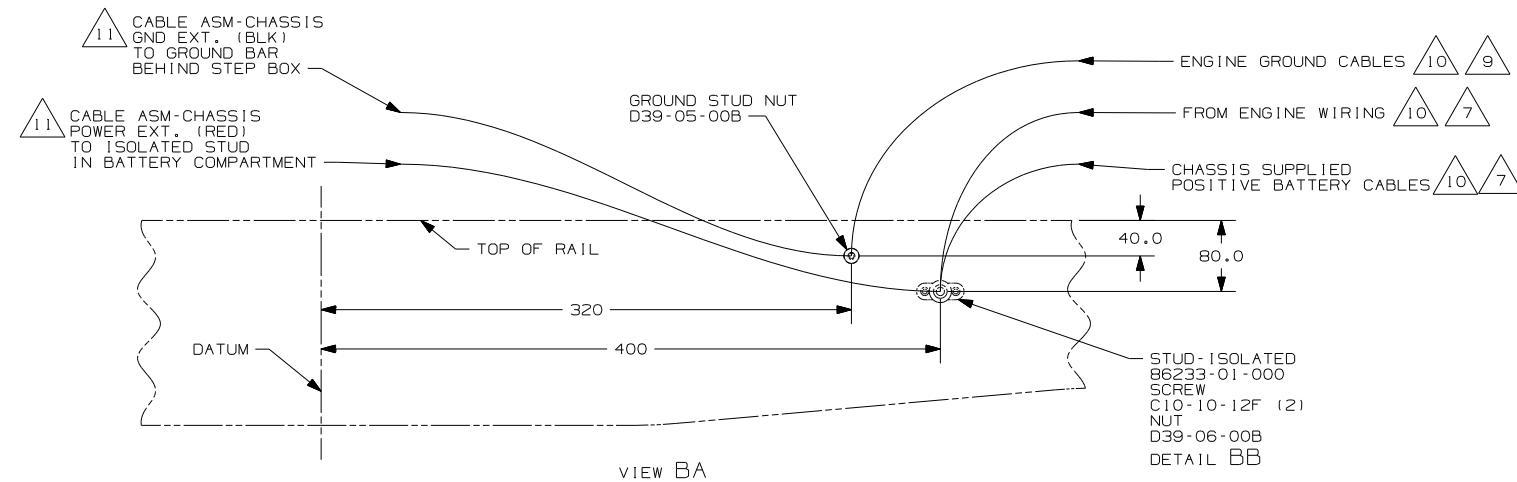


- (60M) HYDRAULIC LEVEL JACKS-AUTO
- (IPL) WORKHORSE 18,000# GVWR (W18)
- (265) CODES/STANDARDS-CSA/CMVSS
- (1B1) CODES/STANDARDS USA

- △8 SEE BATTERY INSTALLATION FOR ADDITIONAL INFORMATION.
 - △7 COVER SHARP EDGES WHERE WIRE CROSSES FRAME RAIL.
 - △6 SEE WIRING INSTL-FRONT END FOR ADDITIONAL INFORMATION.
 - △5 CLAMP 83610-01-000, SCREW G11-10-16B.
 - △4 WIRE TIE 8343-04-000. FASTEN EVERY 600MM MINIMUM.
3. ALL DIMENSIONS ARE FROM DATUM UNLESS OTHERWISE SPECIFIED.
2. SECURE CONDUIT 41953, TAB AS REQUIRED, OVER ALL WIRES IN CONTACT WITH SHARP EDGES.
1. LEGEND: — WINNEBAGO: - - - - - CABLE: - - - - - CHASSIS SUPPLIED WIRING.



- 11 SEE BATTERY INSTALLATION FOR ADDITIONAL INFORMATION.
 - 10 SUPPLIED WITH CHASSIS
 - 9 CUT GROUND CABLES, ADD TERMINAL 8348-01-000 AND CONNECT GROUND TO GROUND STUD AS SHOWN IN DETAIL.
 - 8 COVER SHARP EDGES WHERE WIRE CROSSES FRAME RAILS.
 - 7 CUT STARTER CABLE AND ENGINE WIRING, ADD TERMINAL 68070-01-000 AND CONNECT TO ISOLATED STUD AS SHOWN IN DETAIL.
 - 6 SEE WIRING INSTL-FRONT END FOR ADDITIONAL INFORMATION.
 - 5 CLAMP 83610-01-000, SCREW G11-10-16B.
 - 4 WIRE TIE 8343-04-000. FASTEN EVERY 600MM MINIMUM.
3. ALL DIMENSIONS ARE FROM DATUM UNLESS OTHERWISE SPECIFIED.
2. SECURE CONDUIT 41953, TAB AS REQUIRED, OVER ALL WIRES IN CONTACT WITH SHARP EDGES.
1. LEGEND: — WINNEBAGO: - - - - - CABLE: - - - - - CHASSIS SUPPLIED WIRING.

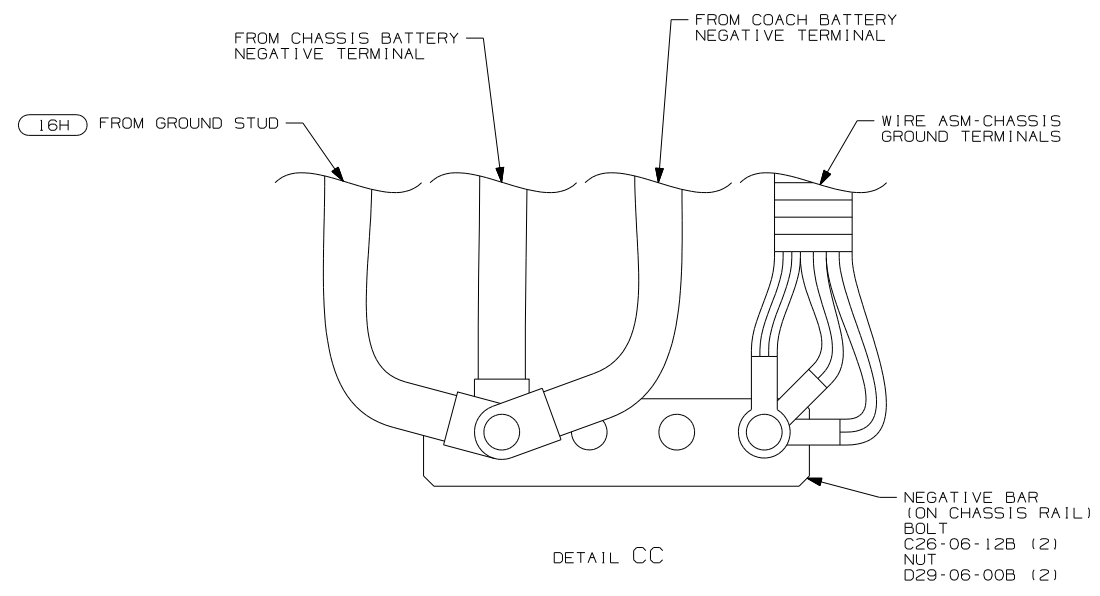
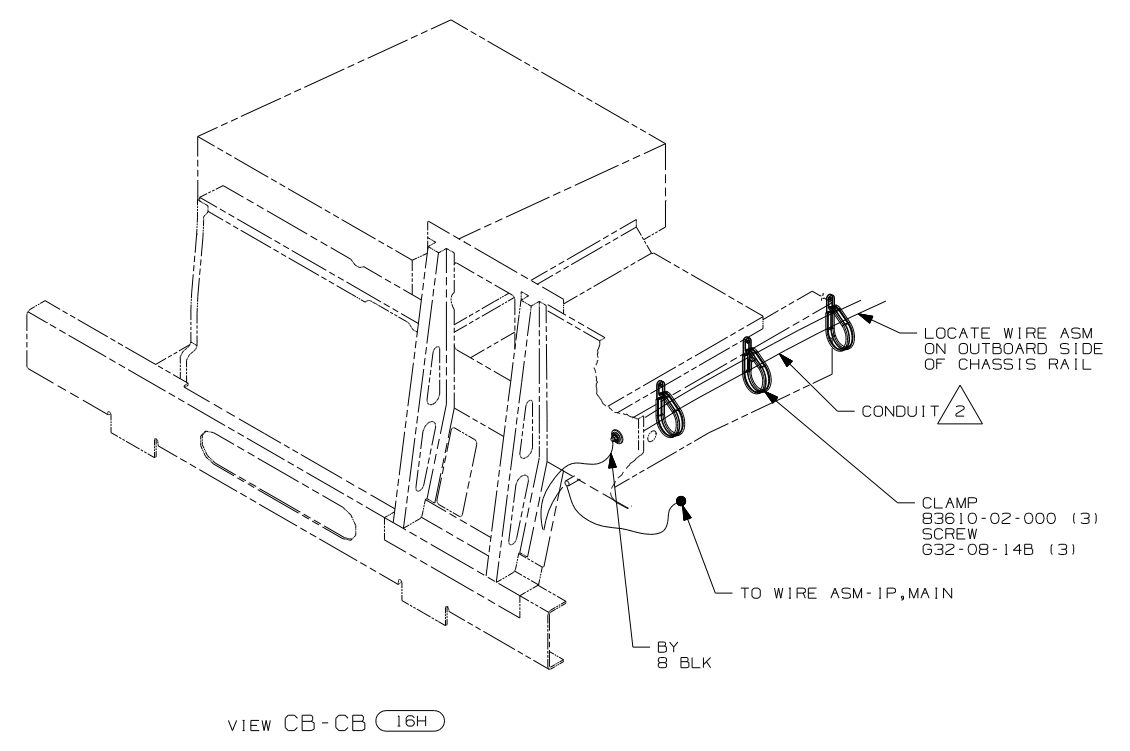
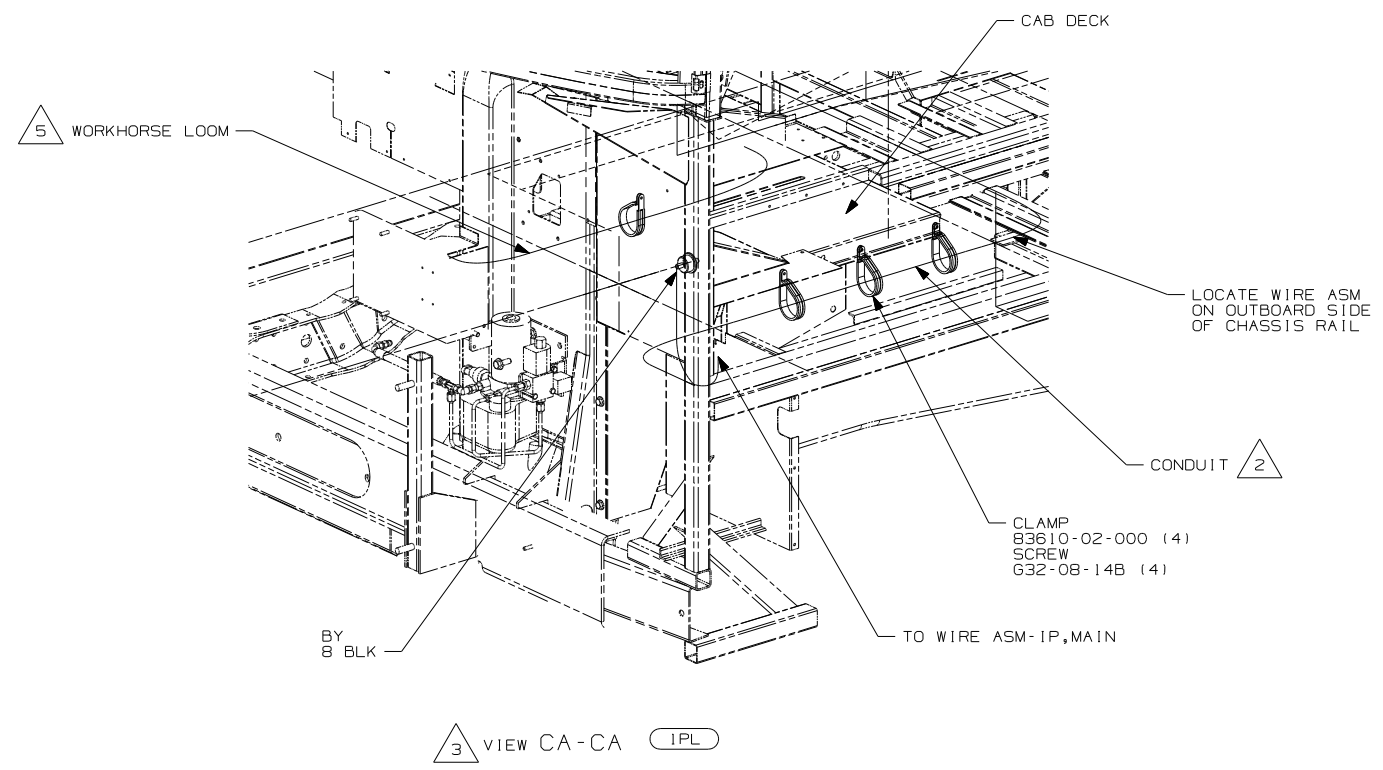


- (60M) HYDRAULIC LEVEL JACKS-AUTO
- (16H) FORD CHASSIS 18,000#/V10 ENG
- (265) CODES/STANDARDS-CSA/CMVSS
- (1B1) CODES/STANDARDS USA

FOR ELECTRICAL TORQUE SPECIFICATIONS SEE DWG NO. 128783-01-000

(X-X) FOR ELECTRICAL CALLOUTS SEE DWG NO. 121339-01-000

FIRST USED	07 D29R
TITLE	DO NOT SCALE DRAWING
TITLE	WIRING INSTL-CHASSIS
SHEET 2	PART NO 157959 REV



- 5 CLAMP WORKHORSE ENGINE HARNESS TO CAB DECK TO PROTECT HARNESS FROM DAMAGE.
4. CONNECT CABLES TO COACH SIDE OF BATTERY DISCONNECT WHEN BATTERY DISCONNECT IS USED.
- 3 ALL GROUND WIRE TO BE COVERED WITH TUBING 8041-02-000.
- 2 COVER WITH CONDUIT 41953-10-000 AND 41953-11-000 AS REQUIRED.
1. CUT OFF EXCESS END OF WIRE TIE.

NOTES:

- (IPL) WORKHORSE 18,000# GVWR (W18)
- (16H) FORD CHASSIS 18,000#/V10 ENG
- (265) CODES/STANDARDS-CSA/CMVSS
- (1B1) CODES/STANDARDS USA

FIRST USED	
07 D29R	
DO NOT SCALE DRAWING	
TITLE: WIRING INSTL-CHASSIS	
SHEET 3	PART NO 157959 REV

FOR ELECTRICAL TORQUE SPECIFICATIONS SEE DWG NO. 128783-01-000

(X-X) FOR ELECTRICAL CALLOUTS SEE DWG NO. 121339-01-000