



DANGER

Danger of electrical shock, burns or death. Always remove all power sources before attempting any repair, service or diagnostic work. Power can be present from shore power, generator, inverter or battery. All power sources must be disabled and secured before performing any service.

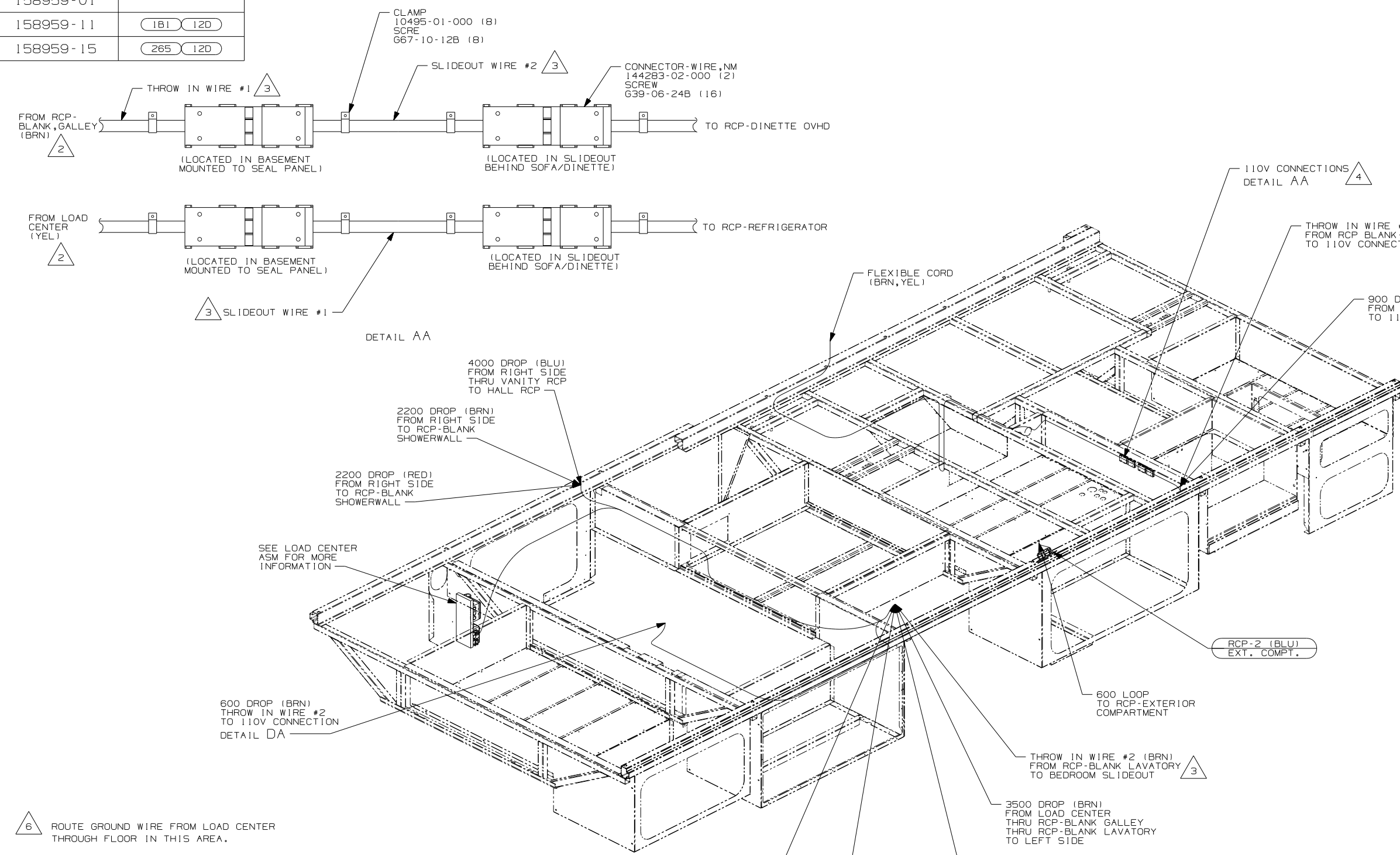


CAUTION

If you lack the skills, tools or equipment to perform diagnostic or repair work leave such work to an authorized Winnebago Industries dealer or other qualified shop.

DRAWING NO.	FEATURE
158959-01	
158959-11	(1B1) (12D)
158959-15	(265) (12D)

RELEASE	REV DATE	DWG NO	158959
REV ZONE	REVISION RECORD	DATE	DFTR-0R16



- 6 ROUTE GROUND WIRE FROM LOAD CENTER THROUGH FLOOR IN THIS AREA.
- 5. ALL WIRES TO BE SECURED WITH CLAMP 10495 OR 10497 OR WIRE TIE 8343 OR 108046 EVERY 600MM, USE SCREW 667-XX-XXX OR 656-XX-XXX AS APPROPRIATE FOR INTALLATION.
- 4 110V CONNECTIONS MUST BE WITHIN 50MM OF THE TOP OF THE FRAME RAIL.
- 3 SEE LOAD CENTER ASM FOR ADDITIONAL INFORMATION.
- 2 CONNECTOR-WIRE, NM IS INSTALLED ON THIS CIRCUIT IN 110V WIRE PREP.
- 1. WIRES ROUTED UNDER FLOOR.

NOTES:

(12D)	ELECTRICAL SYSTEM 30 AMP
(265)	CODES/STANDARDS-CSA/CMVSS
(1B1)	CODES/STANDARDS USA
(1B1) (265) (12D)	

WINNEBAGO COPYRIGHT 2006 WINNEBAGO INDUSTRIES, INC.

DFTR	ORIG. DATE
CHKR	ALL DIMENSIONS ARE IN MILLIMETERS
P.E.	
M.E.	FIRST USED
DSNR	07 D26P

UNSPECIFIED TOLERANCES ARE: MATERIAL:

HOLE DIM (X)	: 3
ONE-PLACE (X, X)	: 1.5
TWO-PLACE (X, XX)	: 0.50
ANGLE	: 1°

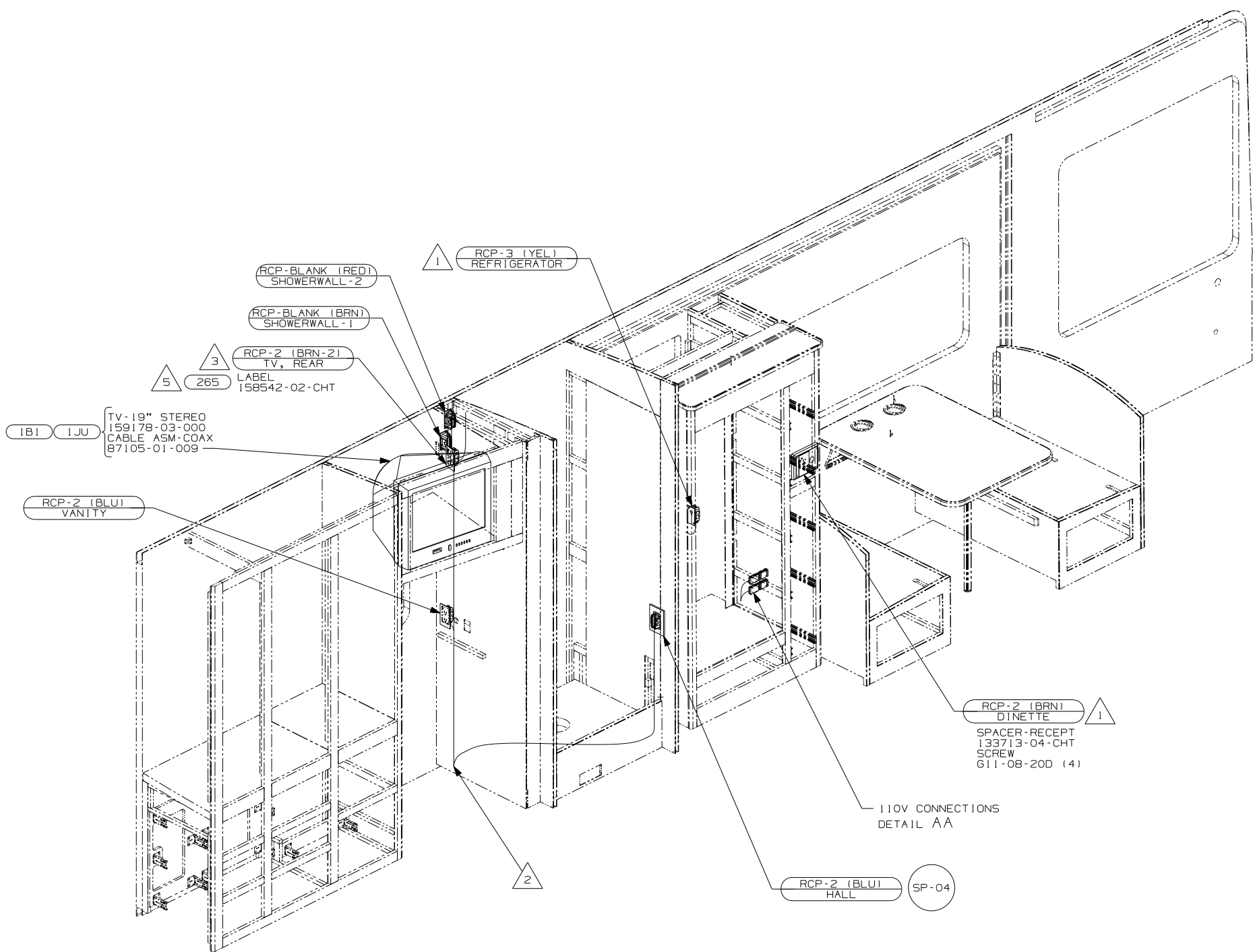
THIRD ANGLE PROJECTION

DO NOT SCALE DRAWING

TITLE: WIRING INSTL-BODY, 110V

SHEET 1 of 4 PART NO 158959 REV

REF: 1 10/23/2006



1B1 1JU TV-19" STEREO
159178-03-000
CABLE ASM-COAX
87105-01-009

RCP-2 (BLU)
VANITY

1 RCP-3 (YEL)
REFRIGERATOR

RCP-BLANK (RED)
SHOWERWALL-2

RCP-BLANK (BRN)
SHOWERWALL-1

3 RCP-2 (BRN-2)
TV, REAR
265 LABEL
158542-02-CHT

1 RCP-2 (BRN)
DINETTE
SPACER-RECEPT
133713-04-CHT
SCREW
611-08-20D (4)

110V CONNECTIONS
DETAIL AA

RCP-2 (BLU)
HALL SP-04

5 WITHOUT 1JU

4. ALL WIRES TO BE SECURED WITH CLAMP 10495 OR 10497 OR WIRE TIE 8343 OR 108046 EVERY 600MM, USE SCREW G67-XX-XXX OR G56-XX-XXX AS APPROPRIATE FOR INTALLATION.

3 WIRE ROUTED IN ROOF.

2 WIRE ROUTED THRU FLOOR IN THIS AREA.

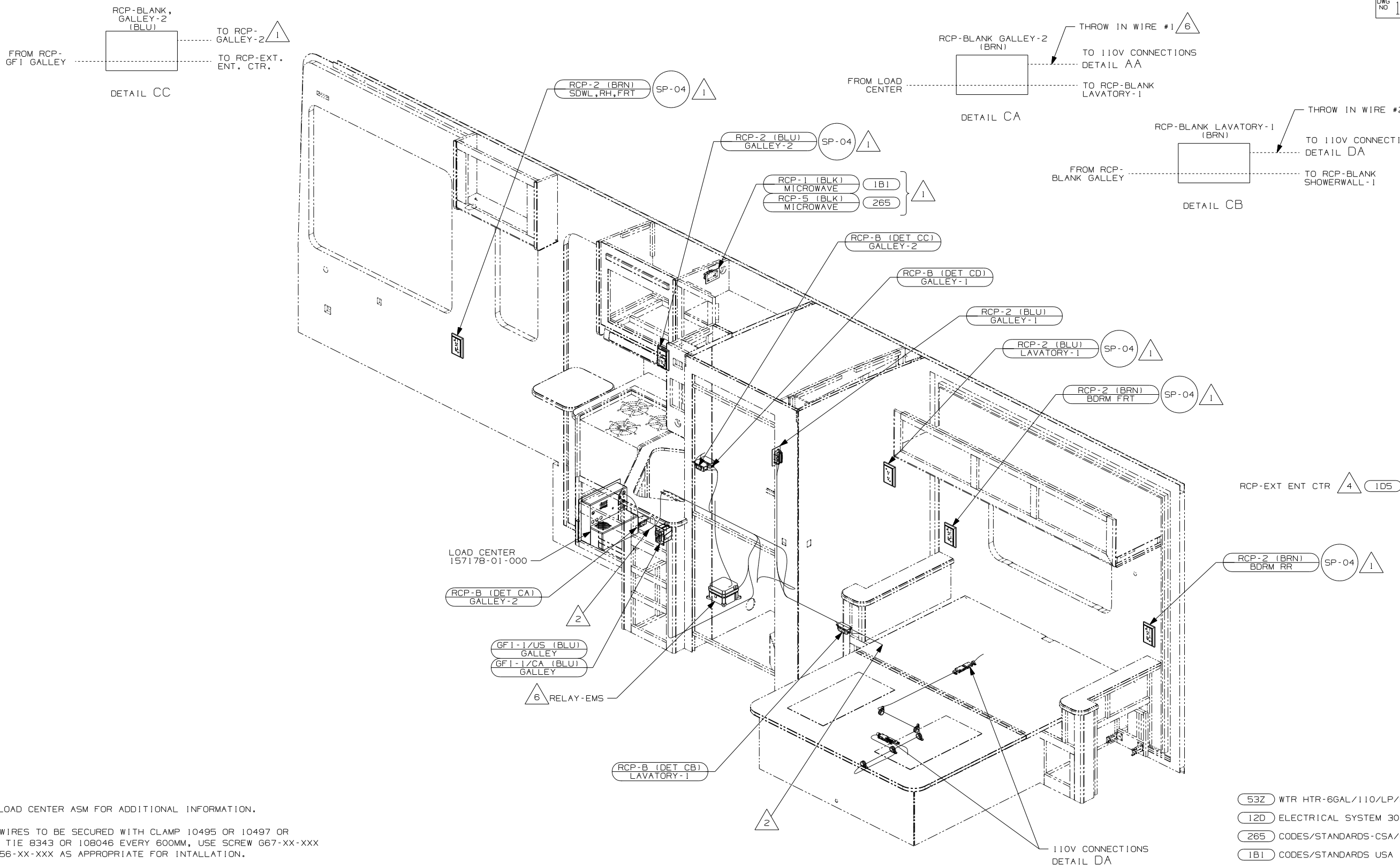
1 WIRE ROUTED IN SIDEWALL.

NOTES:

- 1JU TV (REAR)-19"COLOR, STEREO
- 12D ELECTRICAL SYSTEM 30 AMP
- 265 CODES/STANDARDS-CSA/CMVSS
- 1B1 CODES/STANDARDS USA

1B1 265 12D

FIRST USED	
07 D26P	
DO NOT SCALE DRAWING	
TITLE:	
WIRING INSTL-BODY, 110V	
SHEET 2	PART NO 158959 REV

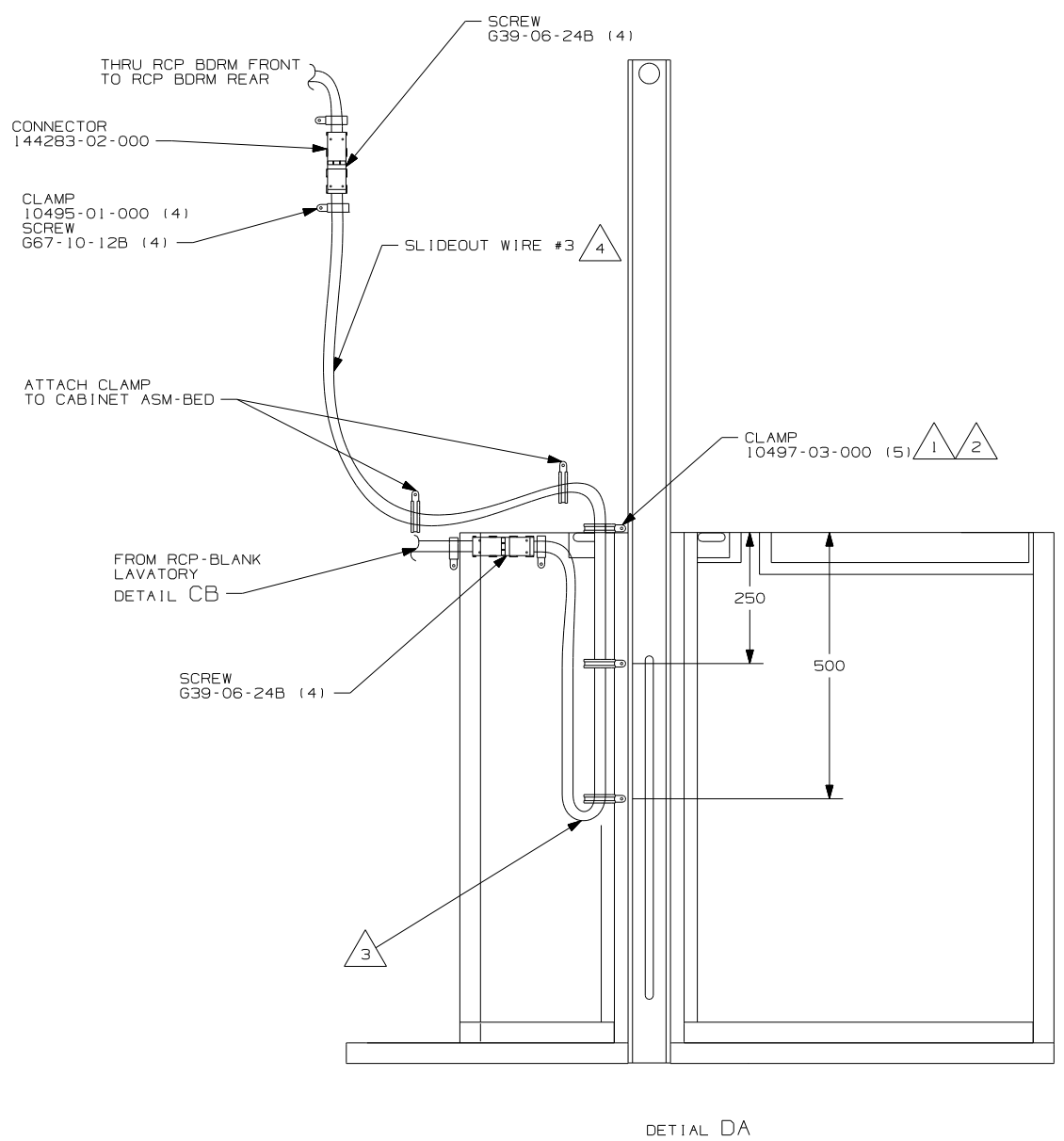


- 6 SEE LOAD CENTER ASM FOR ADDITIONAL INFORMATION.
5. ALL WIRES TO BE SECURED WITH CLAMP 10495 OR 10497 OR WIRE TIE 8343 OR 108046 EVERY 600MM, USE SCREW G67-XX-XXX OR G56-XX-XXX AS APPROPRIATE FOR INTALLATION.
- 4 SEE ENTERTAINMENT CENTER COMPL. FOR ADDITIONAL INFORMATION.
- 3 WIRE ROUTED IN ROOF.
- 2 WIRE ROUTED THRU FLOOR IN THIS AREA.
- 1 WIRE ROUTED IN SIDEWALL.

NOTES:

- 53Z WTR HTR-6GAL/110V/LP/MTR/AUTO
- 12D ELECTRICAL SYSTEM 30 AMP
- 265 CODES/STANDARDS-CSA/CMVSS
- 1B1 CODES/STANDARDS USA

FIRST USED	
07 D26P	
DO NOT SCALE DRAWING	
TITLE: WIRING INSTL-BODY, 110V	
SHEET 3	PART NO 158959 REV



- NOTES:
- 4 FOR MORE INFORMATION SEE LOAD CENTER/ATS ASM.
 - 3 MAKE THE LOOP AS SMALL AS POSSIBLE WHEN SLIDEOUT IS COMPLETELY RETRACTED.
 - 2 RUN 12V WIRE ALONG WITH SLIDEOUT WIRE #3.
 - 1 WIRE MUST BE ROUTED THROUGH CLAMPS AS SHOWN.

FOR ELECTRICAL TORQUE SPECIFICATIONS SEE DWG NO. 128783-01-000

FOR ELECTRICAL CALLOUTS SEE DWG NO. 121339-01-000

FIRST USED		07 D26P	
DO NOT SCALE DRAWING			
TITLE:		WIRING INSTL-BODY, 110V	
SHEET 4	PART NO	158959	REV