



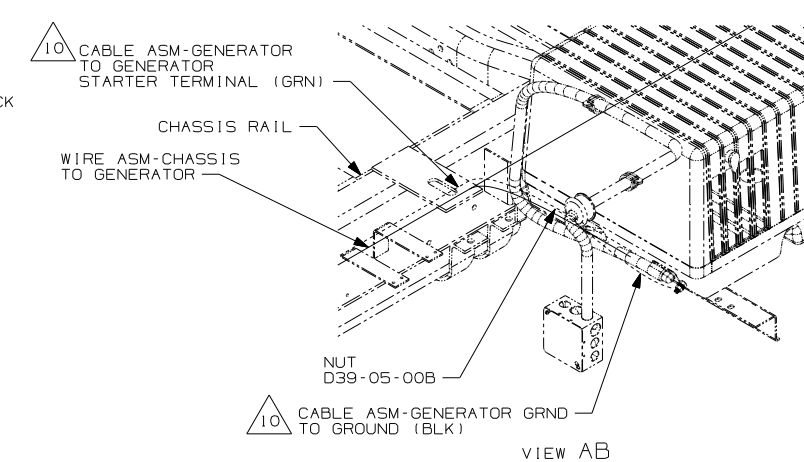
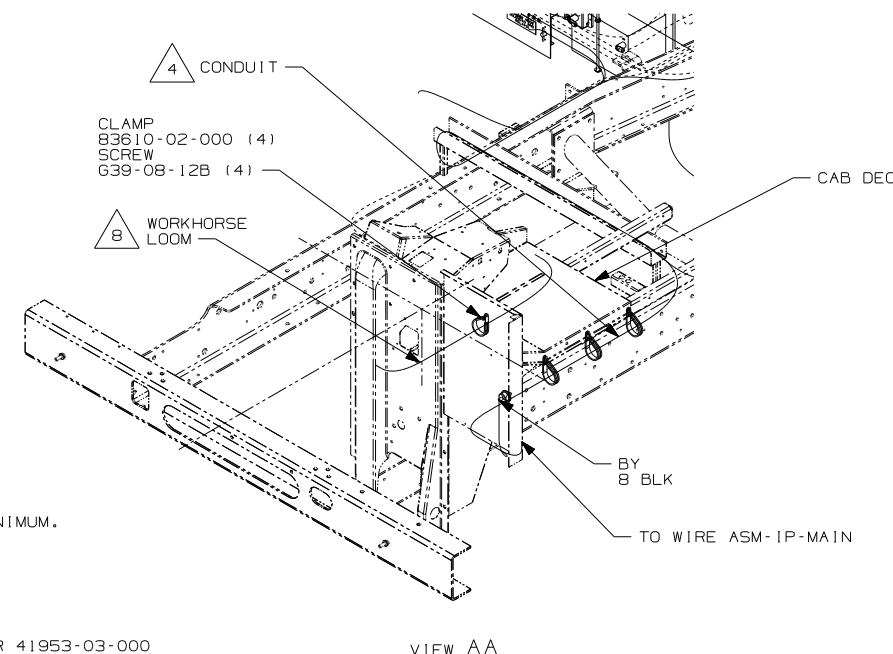
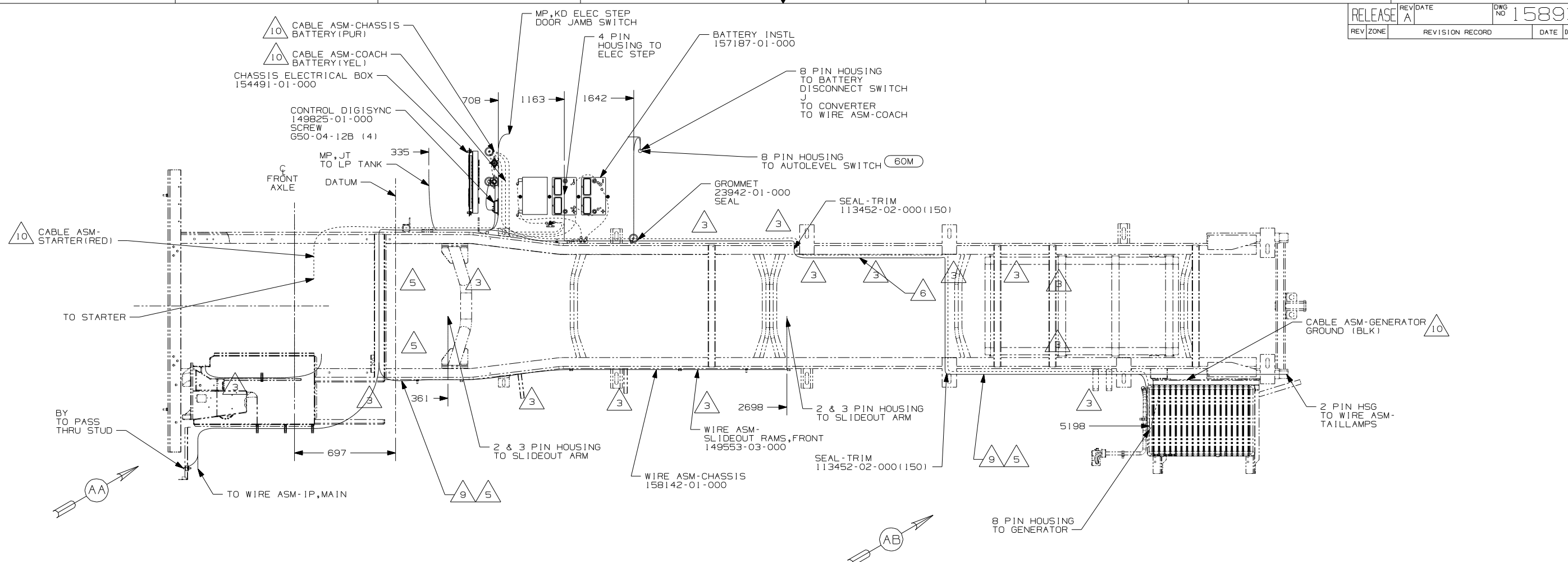
**DANGER**

**Danger of electrical shock, burns or death.** Always remove all power sources before attempting any repair, service or diagnostic work. Power can be present from shore power, generator, inverter or battery. All power sources must be disabled and secured before performing any service.



**CAUTION**

If you lack the skills, tools or equipment to perform diagnostic or repair work leave such work to an authorized Winnebago Industries dealer or other qualified shop.



- 10 SEE BATTERY INSTALLATION FOR ADDITIONAL INFORMATION
- 9 COIL EXCESS WIRE FROM STANDARD LOOM HERE
- 8 CLAMP WORKHORSE ENGINE HARNESS TO CAB DECK TO PROTECT HARNESS FROM DAMAGE.
- 7. WIRE TIE 8343-04-000. FASTEN EVERY 600MM MINIMUM.
- 6 ROUTE WIRES INSIDE OF CHASSIS RAIL.
- 5 CLAMP 10497-03-000, SCREW G39-08-12B.
- 4 SECURE CONDUIT 41953-01-000, 41953-02-000 OR 41953-03-000 OVER ALL WIRES IN CONTACT WITH SHARP EDGES.
- 3 CLAMP 83610-01-000, SCREW G39-08-12B.

2. USE 116673-01-000 TO SECURE WIRES THRU HOLES IN CHASSIS FRAME.  
 1. LEGEND: — WINNEBAGO, ..... CABLE, - - - - - CHASSIS SUPPLIED.  
 NOTES:

- (60M) HYDRAULIC LEVEL JACKS-AUTO
- (1PJ) WORKHORSE 16,000# GVWR (W16)
- (1PC) WORKHORSE CH. 15,000 LB. GVWR.
- (265) CODES/STANDARDS-CSA/CMVSS
- (1B1) CODES STANDARDS/USA

<b>WINNEBAGO</b>		COPYRIGHT 2006 WINNEBAGO INDUSTRIES, INC.	
DFTR	ORIG. DATE	ALL DIMENSIONS ARE IN MILLIMETERS	
CHKR		07 D26P	
P.E.			
M.E.	FIRST USED		
DSNR			
UNSPECIFIED TOLERANCES ARE:		MATERIAL:	
WHOLE DIM (X)	: 3		
ONE-PLACE (X.X)	: 1.5		
TWO-PLACE (X.XX)	: 0.50		
ANGLE	: 1°		
THIRD ANGLE PROJECTION			
DO NOT SCALE DRAWING			
TITLE: WIRING INSTL-CHASSIS			
SHEET 1 OF 1	PART NO	158932	REV
REF:	1 6/15/2006		

FOR ELECTRICAL TORQUE SPECIFICATIONS SEE DWG NO. 128783-01-000  
 FOR ELECTRICAL CALLOUTS SEE DWG NO. 121339-01-000