



**DANGER**

**Danger of electrical shock, burns or death.** Always remove all power sources before attempting any repair, service or diagnostic work. Power can be present from shore power, generator, inverter or battery. All power sources must be disabled and secured before performing any service.

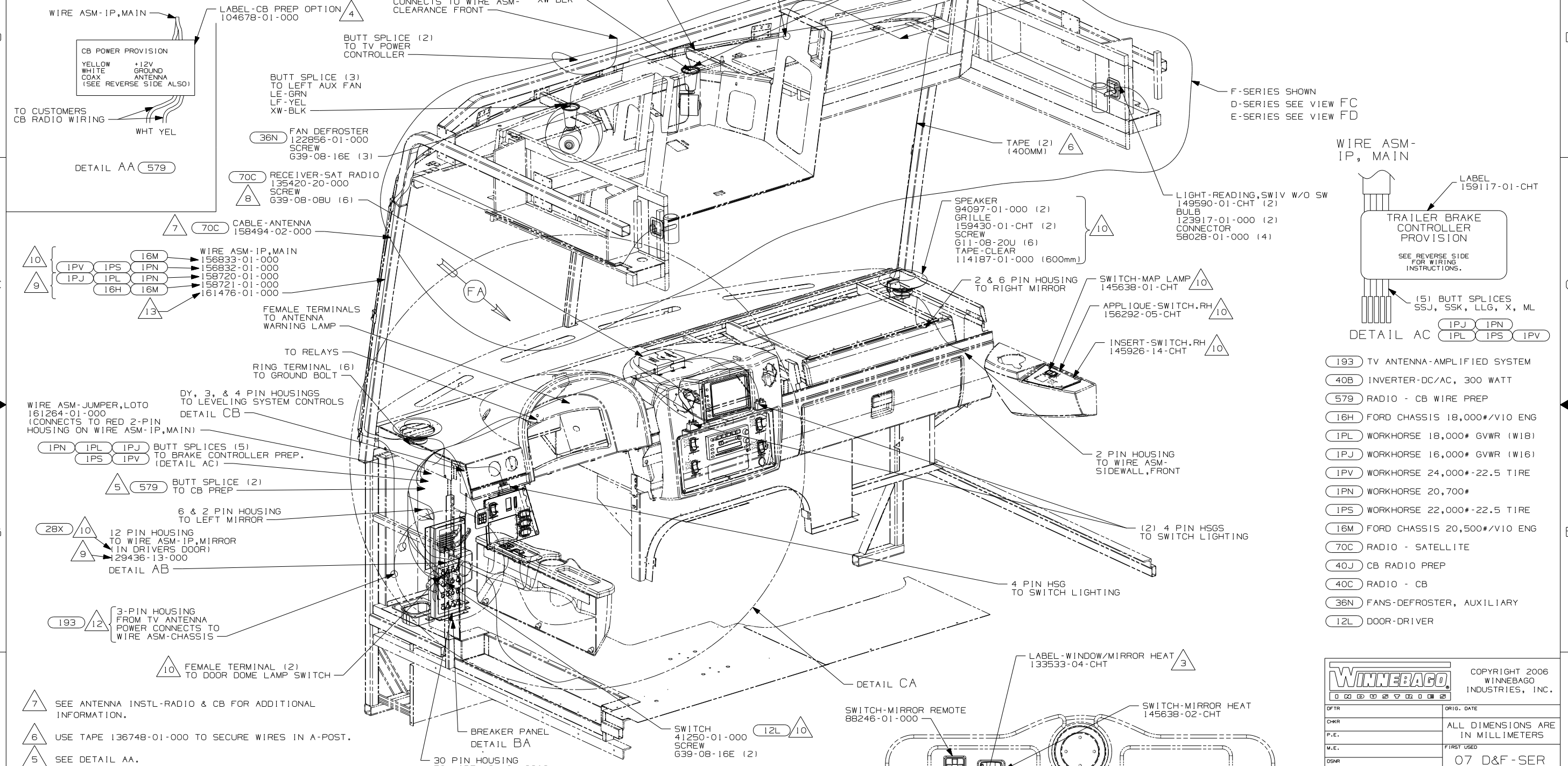


**CAUTION**

If you lack the skills, tools or equipment to perform diagnostic or repair work leave such work to an authorized Winnebago Industries dealer or other qualified shop.

DRAWING NO.	MODEL
156422-01	F-SERIES
156422-02	D-SERIES
156422-03	E-SERIES

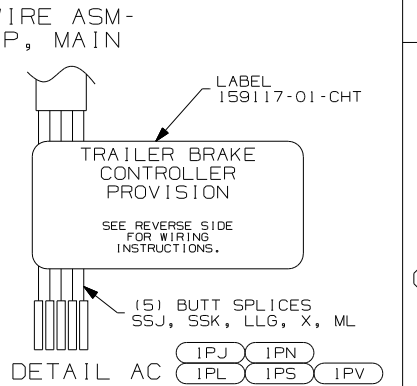
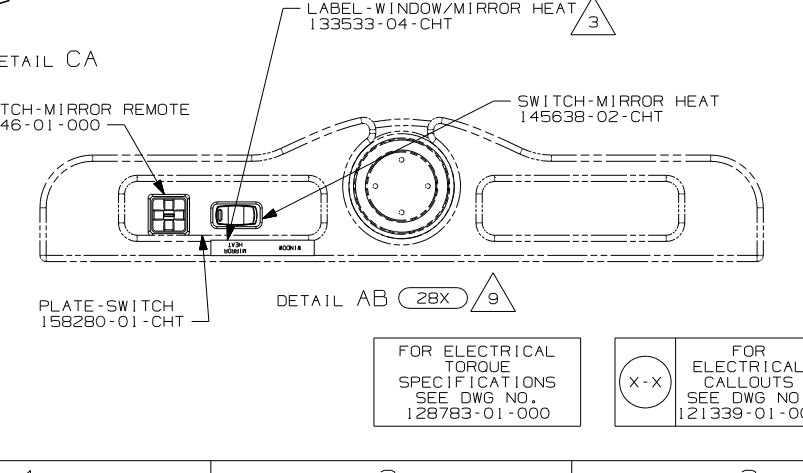
RELEASE	REV/DATE A	DWG NO 156422
REV ZONE	REVISION RECORD	DATE DTR-0R16



- 7 SEE ANTENNA INSTL-RADIO & CB FOR ADDITIONAL INFORMATION.
  - 6 USE TAPE 136748-01-000 TO SECURE WIRES IN A-POST.
  - 5 SEE DETAIL AA.
  - 4 EDGE OF LABEL TO HANG JUST BELOW BOTTOM OF DASH.
  - 3 CUT LABEL TO READ ONLY MIRROR HEAT. POSITION NEXT TO MIRROR HEAT SWITCH AS SHOWN.
  - 2 COVER EACH SPEAKER GRILL WITH TAPE-CLEAR 114187-01-000 (600 MM).
  - 1. WINNEBAGO WIRE ASSEMBLIES ARE SHOWN FOR CLARITY.
  - NOTES:
- 12 USED ON F33S & F38S ONLY
  - 11 SEE WIRING INSTL-TV/DVD,FRONT FOR ADDITIONAL INFORMATION.
  - 10 F-SERIES
  - 9 D-SERIES
  - 8 CONNECT CABLE SUPPLIED WITH SATELLITE RADIO TO RECEIVER & PLUG INTO BACK OF RADIO.
  - 13 E-SERIES
- FOR ELECTRICAL TORQUE SPECIFICATIONS SEE DWG NO. 128783-01-000

FOR ELECTRICAL CALLOUTS SEE DWG NO. 121339-01-000
- |                             |                        |
|-----------------------------|------------------------|
| <b>DO NOT SCALE DRAWING</b> |                        |
| TITLE:                      | WIRING INSTL-FRONT END |
| SHEET 1 OF 5                | PART NO. 156422 REV    |
| REF:                        | I 12/21/2006           |

<b>WINNEBAGO</b>		COPYRIGHT 2006 WINNEBAGO INDUSTRIES, INC.
DTR	ORIG. DATE	
CHKR		ALL DIMENSIONS ARE IN MILLIMETERS
P.E.		FIRST USED
M.E.		07 D&F-SER
DSNR		
UNSPECIFIED TOLERANCES ARE:		MATERIAL:
WHOLE DIM (X)	: 3	
ONE-PLACE (X.X)	: 1.5	
TWO-PLACE (X.XX)	: 0.50	
ANGLE	: 1°	
THIRD ANGLE PROJECTION		



3 CIRCUIT BREAKER-15 AMP  
93654-02-000  
SCREW  
G52-06-05B  
LOCKWASHER  
OME02B-04-071

CIRCUIT BREAKER-15 AMP  
93654-02-000 (3)  
SCREW  
G52-06-05B (3)  
LOCKWASHER  
OME02B-04-071 (3)

40B CIRCUIT BREAKER-30 AMP  
93655-02-000  
SCREW  
G52-06-04B  
G52-06-05B  
LOCK WASHER  
OME02B-04-071 (2)

LABEL-CIRCUIT BREAKER  
93236-47-000

57M CIRCUIT BREAKER-15 AMP  
93654-02-000  
SCREW  
G52-06-05B  
LOCKWASHER  
OME02B-04-071

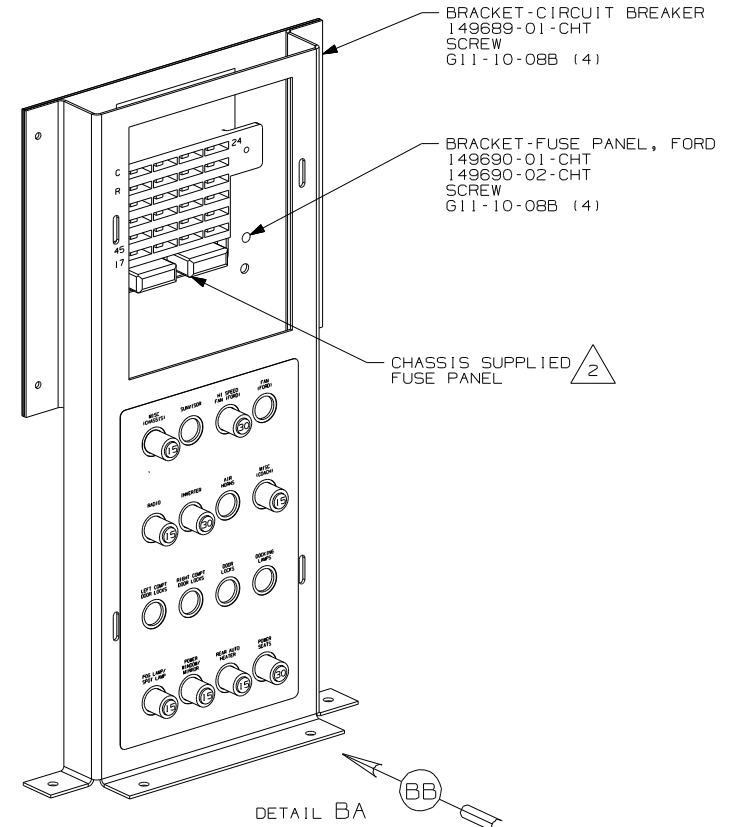
CIRCUIT BREAKER-30 AMP  
93655-02-000  
SCREW  
G52-06-04B  
G52-06-05B  
LOCKWASHER  
OME02B-04-071 (2)

CIRCUIT BREAKER-25 AMP 16M 16H  
93655-01-000  
SCREW  
G52-06-04B  
G52-06-05B  
LOCKWASHER  
OME02B-04-071 (2)

CIRCUIT BREAKER-30 AMP 64Q  
93655-02-000  
SCREW  
G52-06-04B  
G52-06-05B  
LOCKWASHER  
OME02B-04-071 (2)

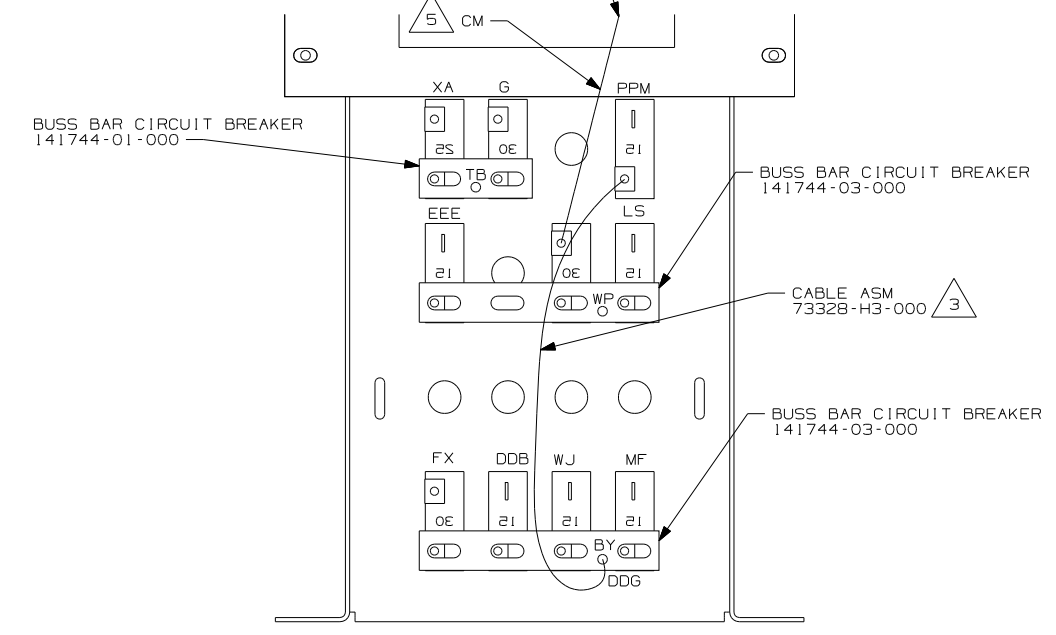
CIRCUIT BREAKER-15 AMP 53Z 5 6  
93654-02-000  
SCREW  
G52-06-05B  
LOCKWASHER  
OME02B-04-071

VIEW BB



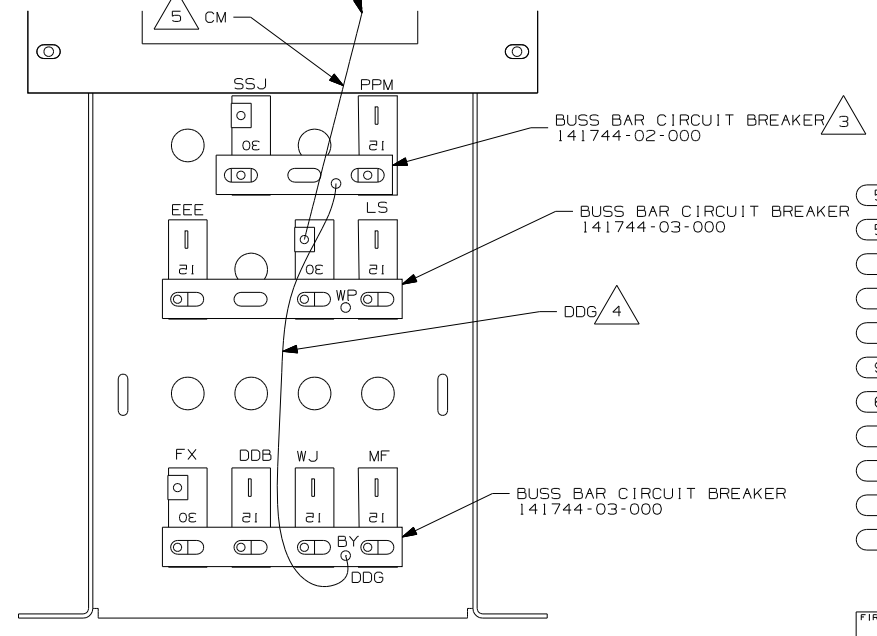
DETAIL BA

5 WIRE ASM-IP,MAIN



VIEW BC 1 16H 16M

5 WIRE ASM-IP,MAIN

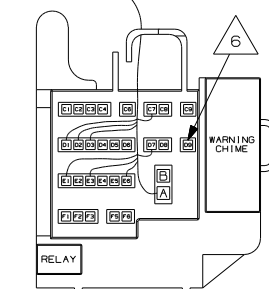
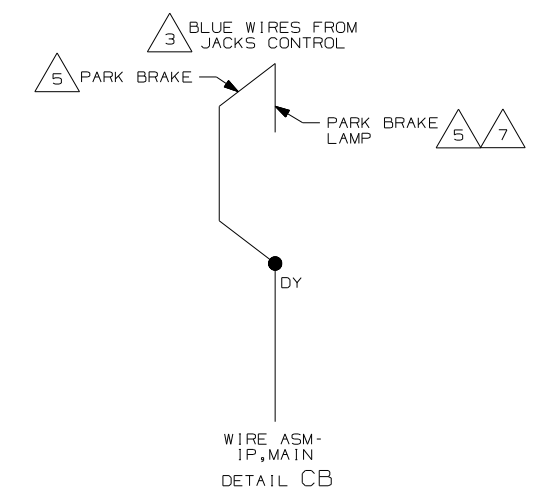
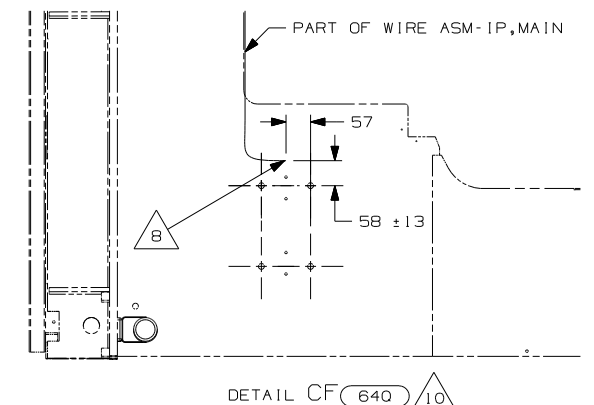
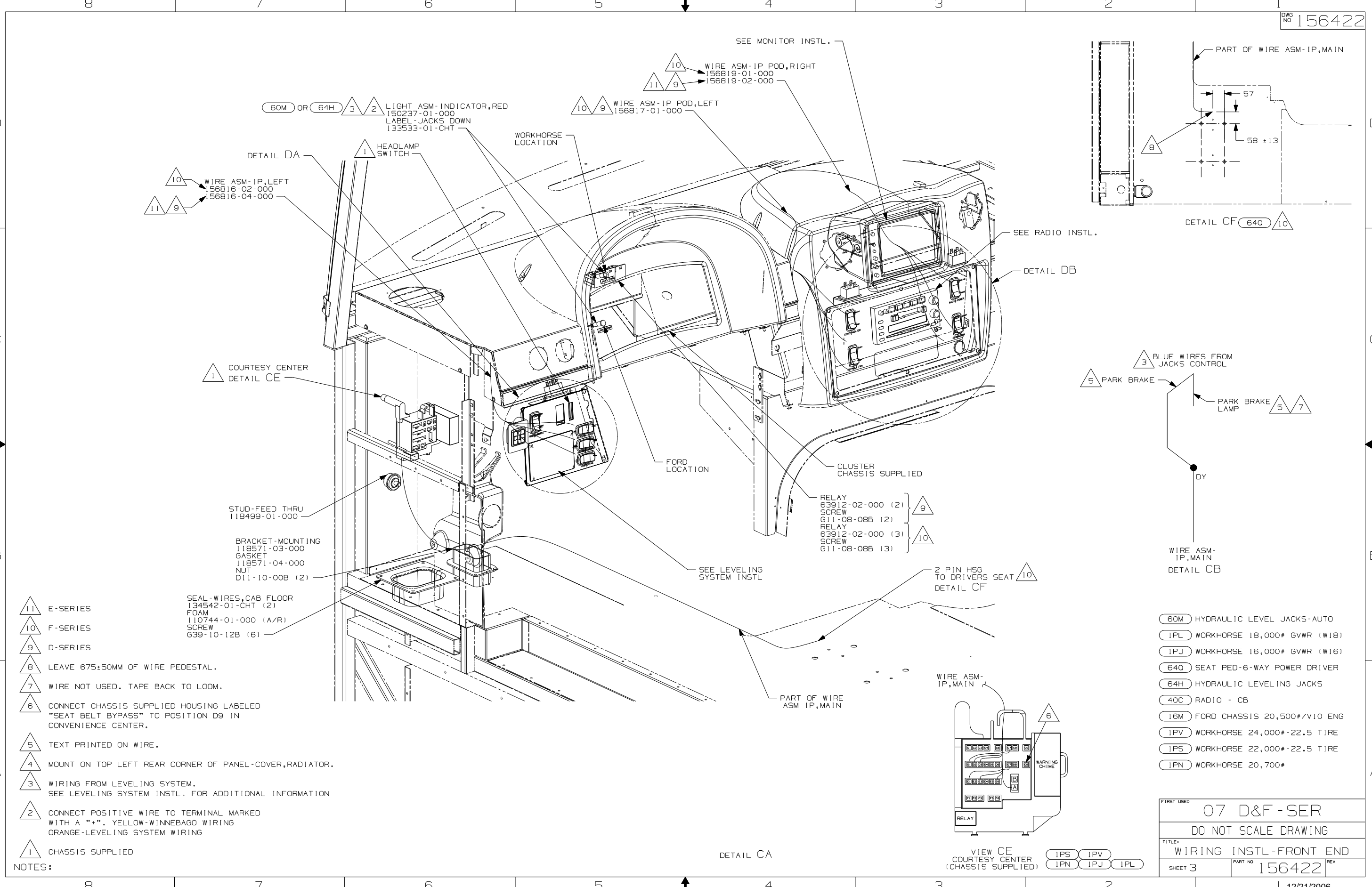


VIEW BC 1 1PN 1PS 1PV

- 53Z WTR HTR-6GAL/110/LP/MTR/AUTO
- 57M LAMPS-FOG
- 1PL WORKHORSE 18,000# GVWR (W18)
- 1PJ WORKHORSE 16,000# GVWR (W16)
- 16H FORD CHASSIS 18,000#/V10 ENG
- 967 SEAT PEDESTALS
- 64Q SEAT PED-6-WAY POWER DRIVER
- 16M FORD CHASSIS 20,500#/V10 ENG
- 1PV WORKHORSE 24,000#-22.5 TIRE
- 1PS WORKHORSE 22,000#-22.5 TIRE
- 1PN WORKHORSE 20,700#

- NOTES:
- 6 F-SERIES
  - 5 D-SERIES
  - 4 F38J: CONNECT DDG TO HOLE IN BUSS BAR  
ALL OTHER MODELS: CONNECT DDG TO BOTTOM  
LUG OF 30 AMP BREAKER
  - 3 F38J ONLY. DO NOT USE ON OTHER MODELS.
  - 2 WORKHORSE PANEL SHOWN.
  - 1 ALL CIRCUITS ARE IN WIRE ASM-IP,MAIN.

FIRST USED	07 D&F - SER	
TITLE	DO NOT SCALE DRAWING	
	WIRING INSTL-FRONT END	
SHEET 2	PART NO 156422	REV

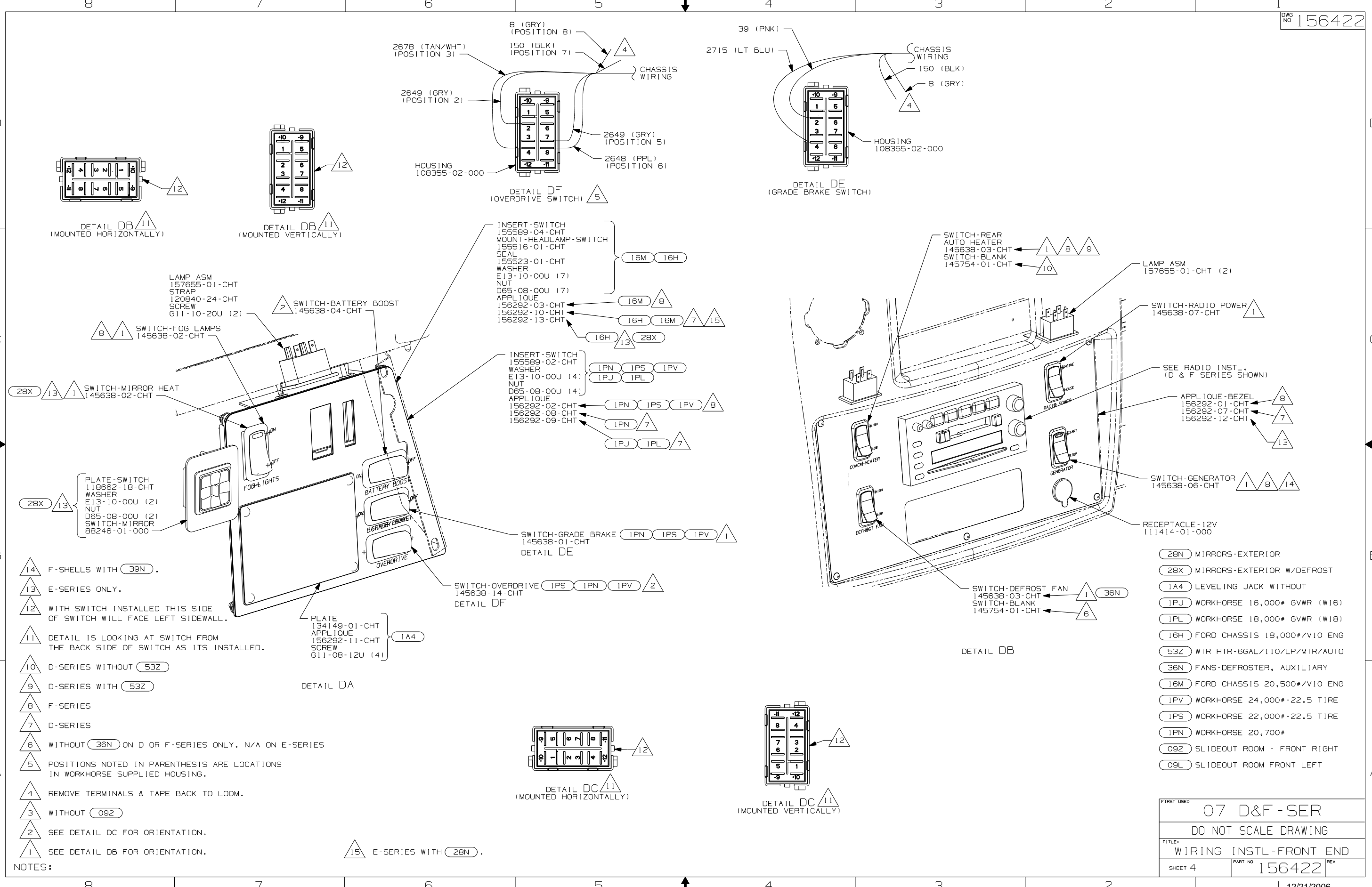


- 11 E-SERIES
- 10 F-SERIES
- 9 D-SERIES
- 8 LEAVE 675±50MM OF WIRE PEDESTAL.
- 7 WIRE NOT USED. TAPE BACK TO LOOM.
- 6 CONNECT CHASSIS SUPPLIED HOUSING LABELED "SEAT BELT BYPASS" TO POSITION D9 IN CONVENIENCE CENTER.
- 5 TEXT PRINTED ON WIRE.
- 4 MOUNT ON TOP LEFT REAR CORNER OF PANEL-COVER, RADIATOR.
- 3 WIRING FROM LEVELING SYSTEM. SEE LEVELING SYSTEM INSTL. FOR ADDITIONAL INFORMATION
- 2 CONNECT POSITIVE WIRE TO TERMINAL MARKED WITH A "+". YELLOW-WINNEBAGO WIRING ORANGE-LEVELING SYSTEM WIRING
- 1 CHASSIS SUPPLIED

NOTES:

- 60M HYDRAULIC LEVEL JACKS-AUTO
- 1PL WORKHORSE 18,000# GVWR (W18)
- 1PJ WORKHORSE 16,000# GVWR (W16)
- 640 SEAT PED-6-WAY POWER DRIVER
- 64H HYDRAULIC LEVELING JACKS
- 40C RADIO - CB
- 16M FORD CHASSIS 20,500#/V10 ENG
- 1PV WORKHORSE 24,000#-22.5 TIRE
- 1PS WORKHORSE 22,000#-22.5 TIRE
- 1PN WORKHORSE 20,700#

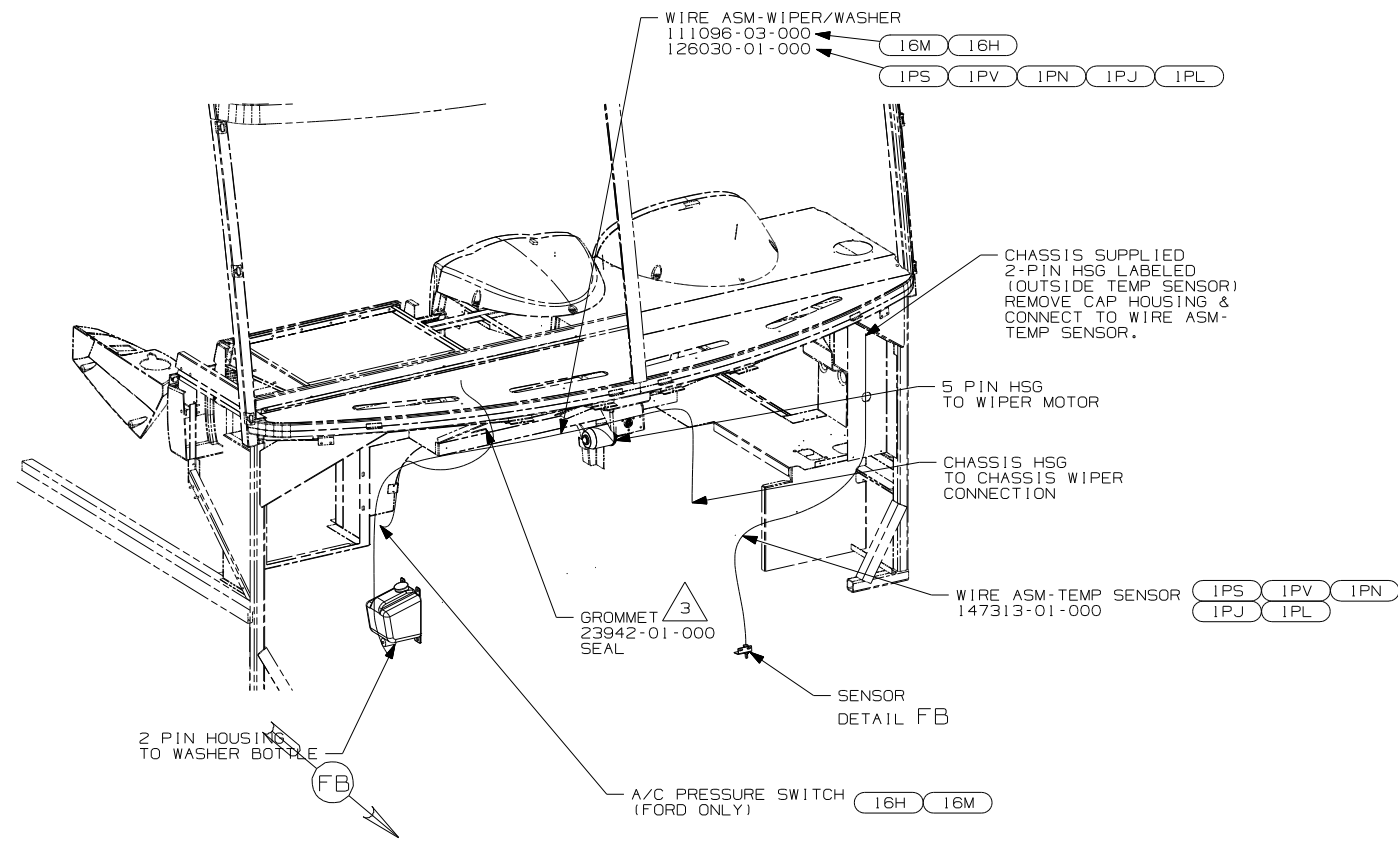
FIRST USED	07 D&F - SER		
TITLE:	DO NOT SCALE DRAWING		
	WIRING INSTL-FRONT END		
SHEET 3	PART NO	156422	REV



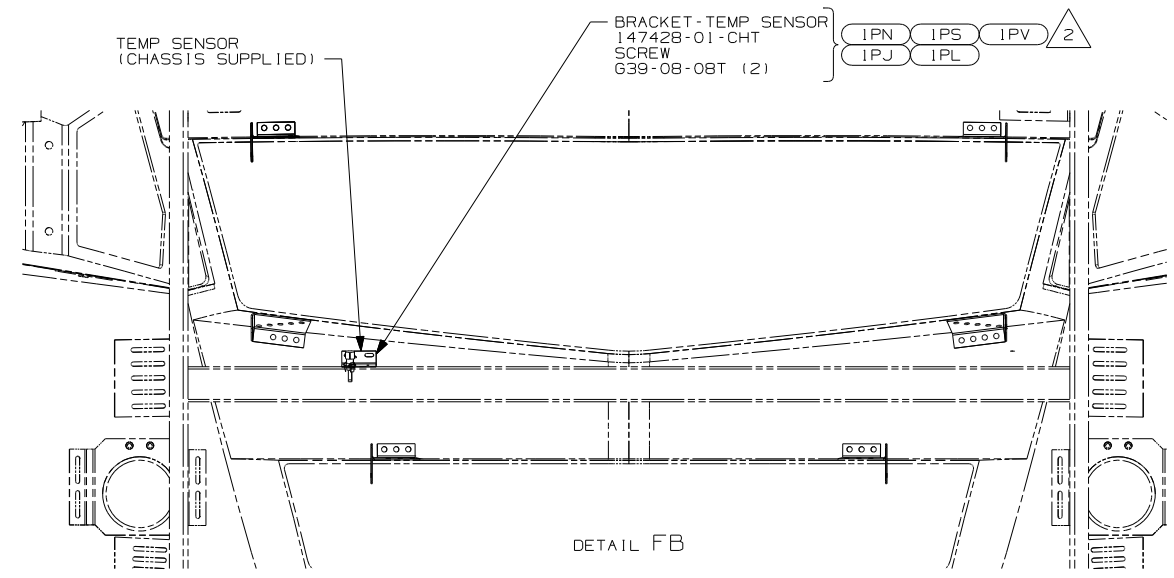
- NOTES:
- 14 F-SHELLS WITH (39N).
  - 13 E-SERIES ONLY.
  - 12 WITH SWITCH INSTALLED THIS SIDE OF SWITCH WILL FACE LEFT SIDEWALL.
  - 11 DETAIL IS LOOKING AT SWITCH FROM THE BACK SIDE OF SWITCH AS ITS INSTALLED.
  - 10 D-SERIES WITHOUT (53Z)
  - 9 D-SERIES WITH (53Z)
  - 8 F-SERIES
  - 7 D-SERIES
  - 6 WITHOUT (36N) ON D OR F-SERIES ONLY. N/A ON E-SERIES
  - 5 POSITIONS NOTED IN PARENTHESIS ARE LOCATIONS IN WORKHORSE SUPPLIED HOUSING.
  - 4 REMOVE TERMINALS & TAPE BACK TO LOOM.
  - 3 WITHOUT (092)
  - 2 SEE DETAIL DC FOR ORIENTATION.
  - 1 SEE DETAIL DB FOR ORIENTATION.

- (28N) MIRRORS-EXTERIOR
- (28X) MIRRORS-EXTERIOR W/DEFROST
- (1A4) LEVELING JACK WITHOUT
- (1PJ) WORKHORSE 16,000# GVWR (W16)
- (1PL) WORKHORSE 18,000# GVWR (W18)
- (16H) FORD CHASSIS 18,000#/V10 ENG
- (53Z) WTR-HTR-6GAL/110/LP/MTR/AUTO
- (36N) FANS-DEFROSTER, AUXILIARY
- (16M) FORD CHASSIS 20,500#/V10 ENG
- (1PV) WORKHORSE 24,000#-22.5 TIRE
- (1PS) WORKHORSE 22,000#-22.5 TIRE
- (1PN) WORKHORSE 20,700#
- (092) SLIDEOUT ROOM - FRONT RIGHT
- (09L) SLIDEOUT ROOM FRONT LEFT

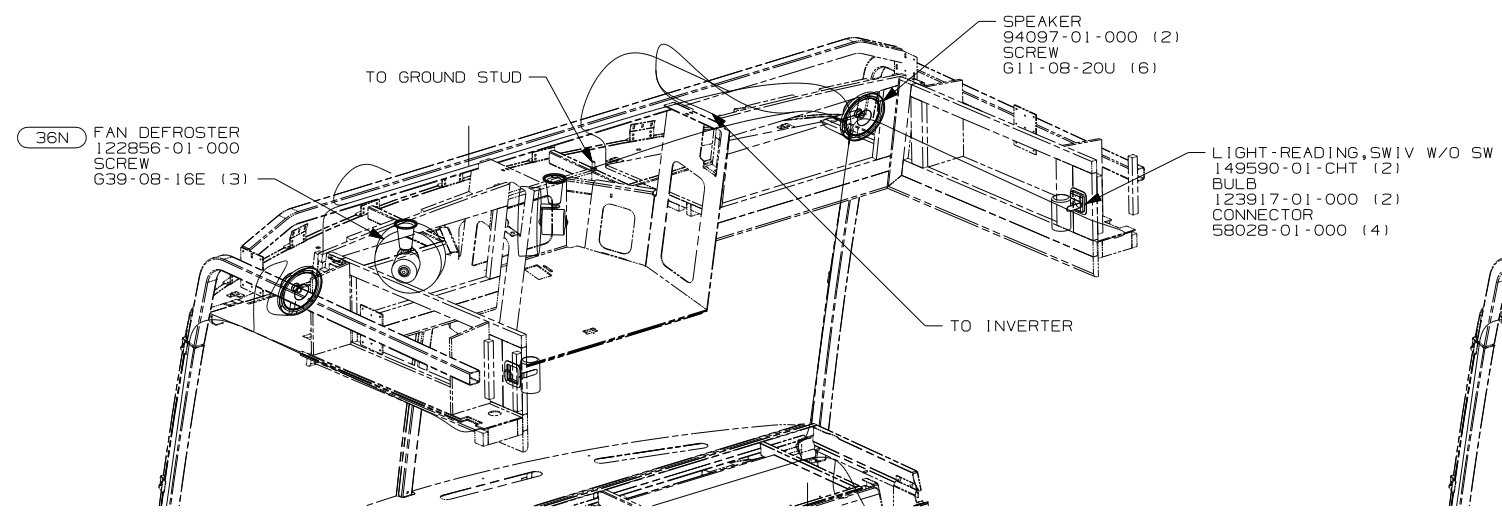
FIRST USED	07 D&F - SER		
TITLE	DO NOT SCALE DRAWING		
	WIRING INSTL-FRONT END		
SHEET 4	PART NO	156422	REV



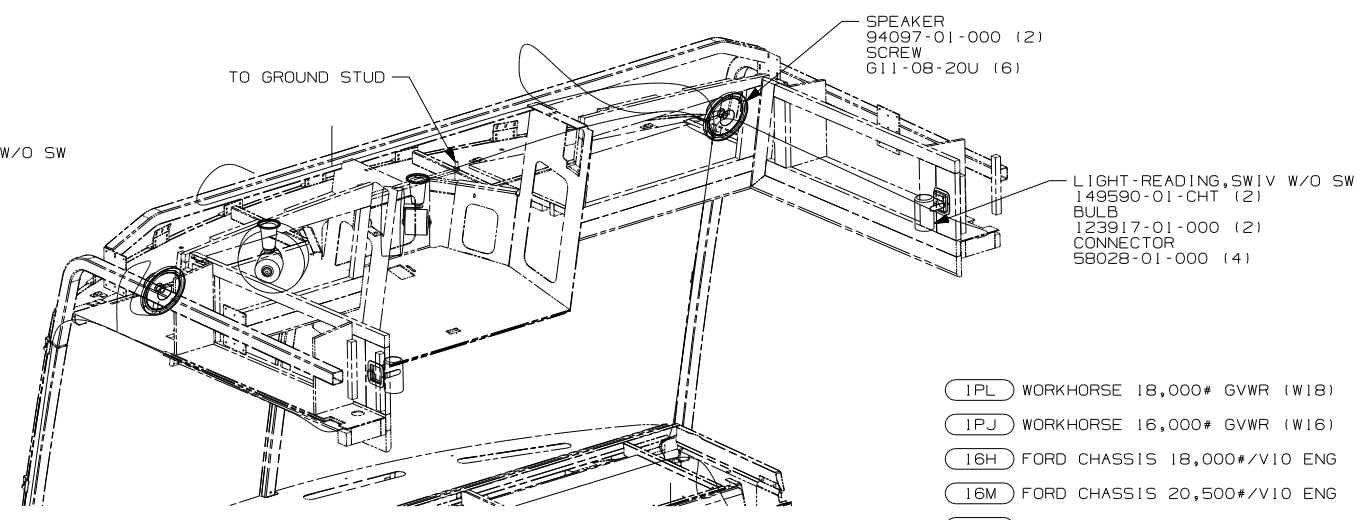
DETAIL FA



DETAIL FB



VIEW FC



VIEW FD

- (IPL) WORKHORSE 18,000# GVWR (W18)
- (IPJ) WORKHORSE 16,000# GVWR (W16)
- (16H) FORD CHASSIS 18,000#/V10 ENG
- (16M) FORD CHASSIS 20,500#/V10 ENG
- (IPV) WORKHORSE 24,000#-22.5 TIRE
- (IPS) WORKHORSE 22,000#-22.5 TIRE
- (IPN) WORKHORSE 20,700#

- △ 5 E-SERIES ONLY
- △ 4 D-SERIES ONLY
- △ 3 ROUTE WIRES THROUGH HOLE IN STEEL.
- △ 2 MOUNT SENSOR OR SENSOR BRACKET TO HORIZONTAL TUBE ON FIBERGLASS AS SHOWN.

1. GATHER ALL EXCESS WIRE AFTER MAKING ALL CONNECTIONS. BUNDLE AND SECURE WITH WIRE TIE 8343-01-000 OR 93147-01-000.

NOTES:

FIRST USED	07 D&F - SER	
TITLE	DO NOT SCALE DRAWING	
	WIRING INSTL-FRONT END	
SHEET 5	PART NO	156422
	REV	