



DANGER

Danger of electrical shock, burns or death. Always remove all power sources before attempting any repair, service or diagnostic work. Power can be present from shore power, generator, inverter or battery. All power sources must be disabled and secured before performing any service.

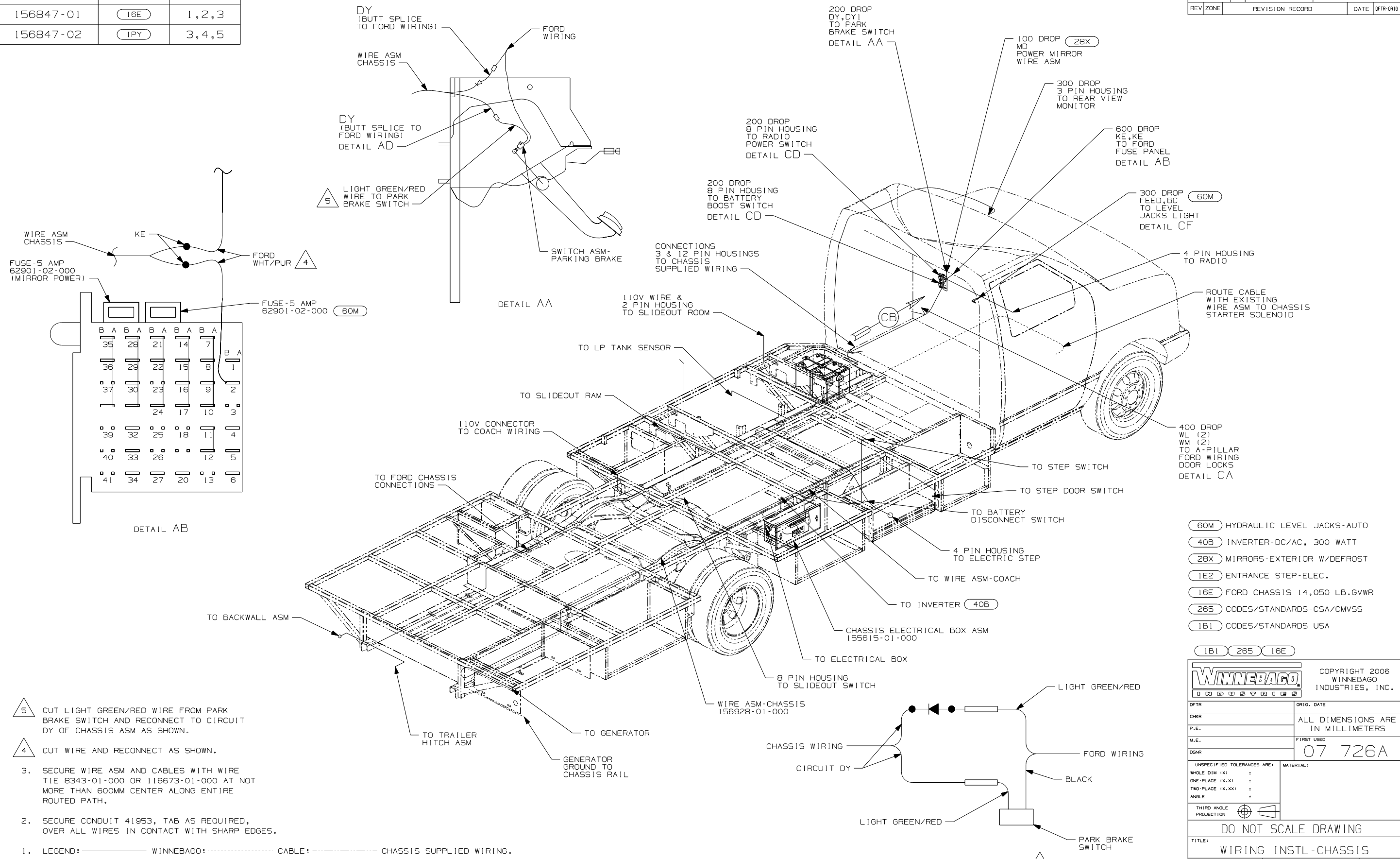


CAUTION

If you lack the skills, tools or equipment to perform diagnostic or repair work leave such work to an authorized Winnebago Industries dealer or other qualified shop.

| DRAWING NO. | FEATURE | SHEETS |
|-------------|---------|--------|
| 156847-01 | (16E) | 1,2,3 |
| 156847-02 | (1PY) | 3,4,5 |

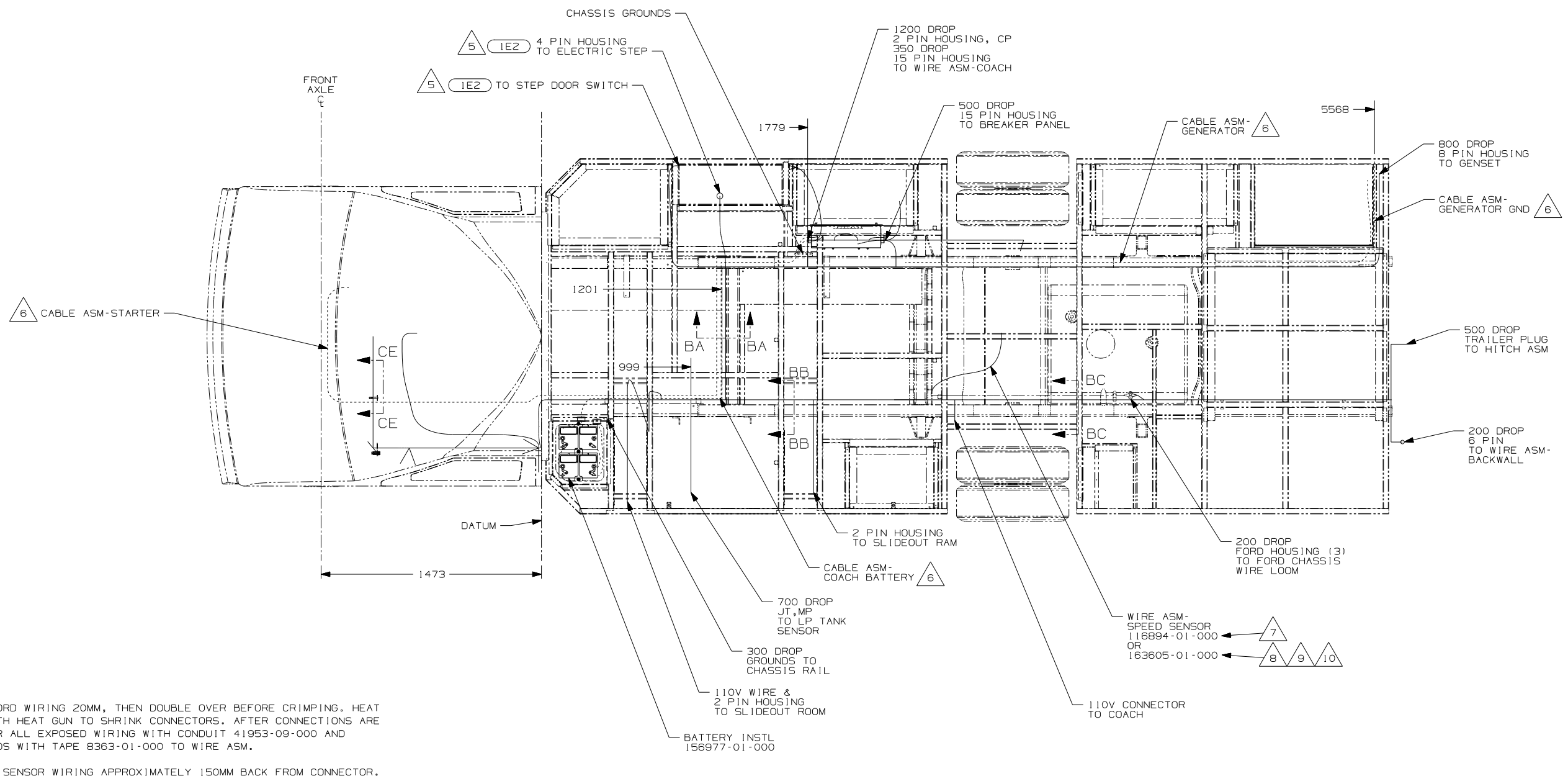
| | | |
|----------|-----------------|-----------|
| RELEASE | REV/DATE | OWG NO |
| | A | 156847 |
| REV ZONE | REVISION RECORD | DATE |
| | | DFTR-0R16 |



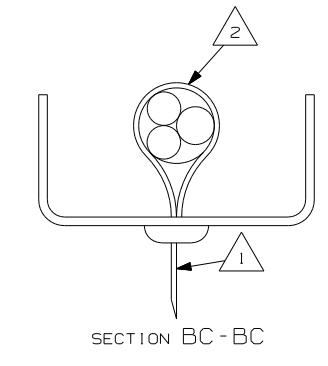
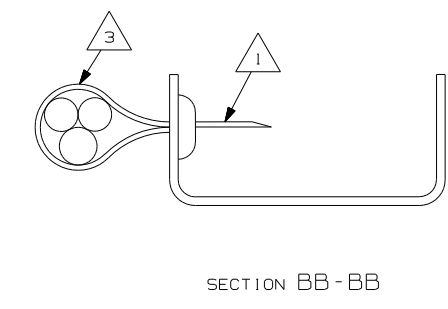
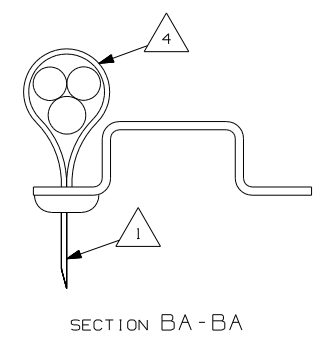
- 5 CUT LIGHT GREEN/RED WIRE FROM PARK BRAKE SWITCH AND RECONNECT TO CIRCUIT DY OF CHASSIS ASM AS SHOWN.
- 4 CUT WIRE AND RECONNECT AS SHOWN.
3. SECURE WIRE ASM AND CABLES WITH WIRE TIE 8343-01-000 OR 116673-01-000 AT NOT MORE THAN 600MM CENTER ALONG ENTIRE ROUTED PATH.
2. SECURE CONDUIT 41953, TAB AS REQUIRED, OVER ALL WIRES IN CONTACT WITH SHARP EDGES.
1. LEGEND: — WINNEBAGO: CABLE: CHASSIS SUPPLIED WIRING.

- (60M) HYDRAULIC LEVEL JACKS-AUTO
- (40B) INVERTER-DC/AC, 300 WATT
- (28X) MIRRORS-EXTERIOR W/DEFROST
- (1E2) ENTRANCE STEP-ELEC.
- (16E) FORD CHASSIS 14,050 LB.GVWR
- (265) CODES/STANDARDS-CSA/CMVSS
- (1B1) CODES/STANDARDS USA

| | | | |
|-----------------------------|--------------------------------------|---|--|
| WINNEBAGO | | COPYRIGHT 2006 WINNEBAGO INDUSTRIES, INC. | |
| DFTR | ORIG. DATE | | |
| CHKR | ALL DIMENSIONS ARE IN MILLIMETERS | | |
| P.E. | FIRST USED | 07 726A | |
| M.E. | | | |
| DSNR | | | |
| UNSPECIFIED TOLERANCES ARE: | | MATERIAL: | |
| WHOLE DIM (X) | : | | |
| ONE-PLACE (X.X) | : | | |
| TWO-PLACE (X.XX) | : | | |
| ANGLE | : | | |
| THIRD ANGLE PROJECTION | | | |
| DO NOT SCALE DRAWING | | | |
| TITLE: WIRING INSTL-CHASSIS | | | |
| SHEET 1 of 5 | PART NO | 156847 | |
| REF: | 1 1/5/2007 | | |

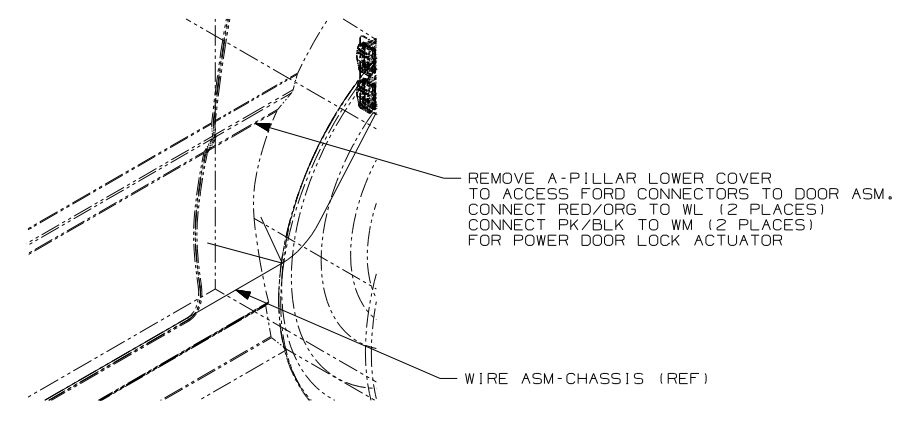


- 10 STRIP END OF FORD WIRING 20MM, THEN DOUBLE OVER BEFORE CRIMPING. HEAT CONNECTIONS WITH HEAT GUN TO SHRINK CONNECTORS. AFTER CONNECTIONS ARE COMPLETE, COVER ALL EXPOSED WIRING WITH CONDUIT 41953-09-000 AND SECURE BOTH ENDS WITH TAPE 8363-01-000 TO WIRE ASM.
- 9 CUT FORD SPEED SENSOR WIRING APPROXIMATELY 150MM BACK FROM CONNECTOR. INSTALL WIRE ASM-SPEED SENSOR IN LINE BETWEEN FORD WIRING AND SPEED SENSOR CONNECTOR, MATCHING THE COLORS OF SPEED SENSOR ASM TO THE FORD WIRE ASM COLORS.
- 8 USED ON 07 FORD CHASSIS.
- 7 USED ON 06 FORD CHASSIS.
- 6 SEE BATTERY INSTL FOR ADDITIONAL INFORMATION.
- 5 SECURE THE DROP BACK TO MAIN WIRE ASM WHEN NOT USED.
- 4 WIRES TO BE TIED TO CROSS MEMBER USING EXISTING HOLES.
- 3 WIRES TO BE TIED TO TOP OF RAIL USING EXISTING HOLES.
- 2 WIRES TO BE TIED TO INSIDE OF RAIL USING EXISTING HOLES.
- 1 CUT OFF EXCESS END OF WIRE TIE.

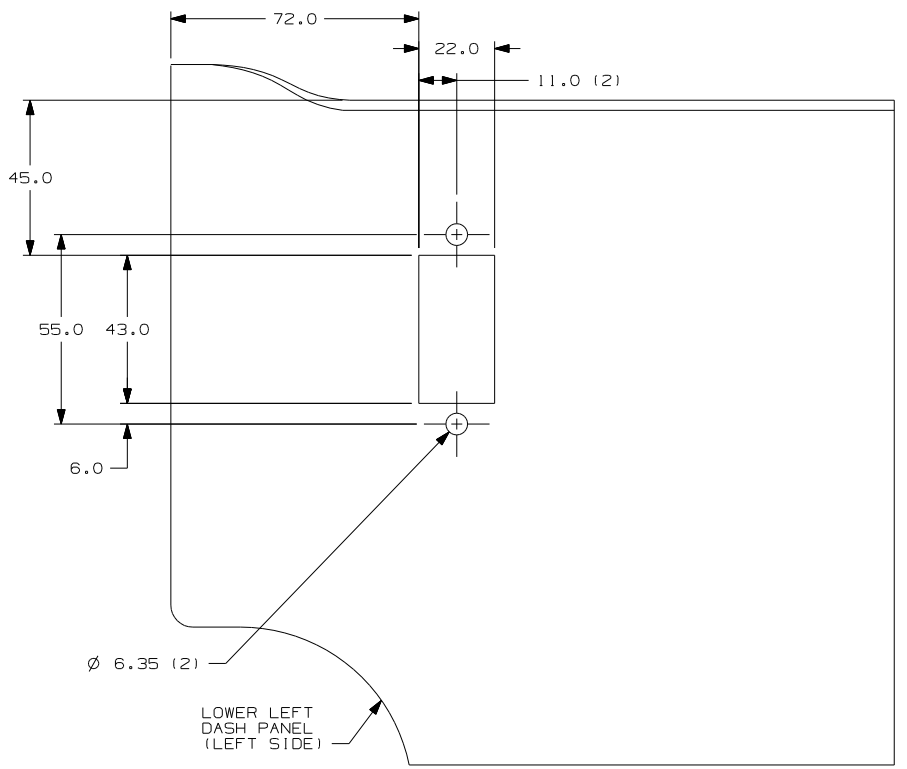


- 1E2 ENTRANCE STEP-ELEC.
- 16E FORD CHASSIS 14,050 LB.GVWR
- 265 CODES/STANDARDS-CSA/CMVSS
- 1B1 CODES/STANDARDS USA

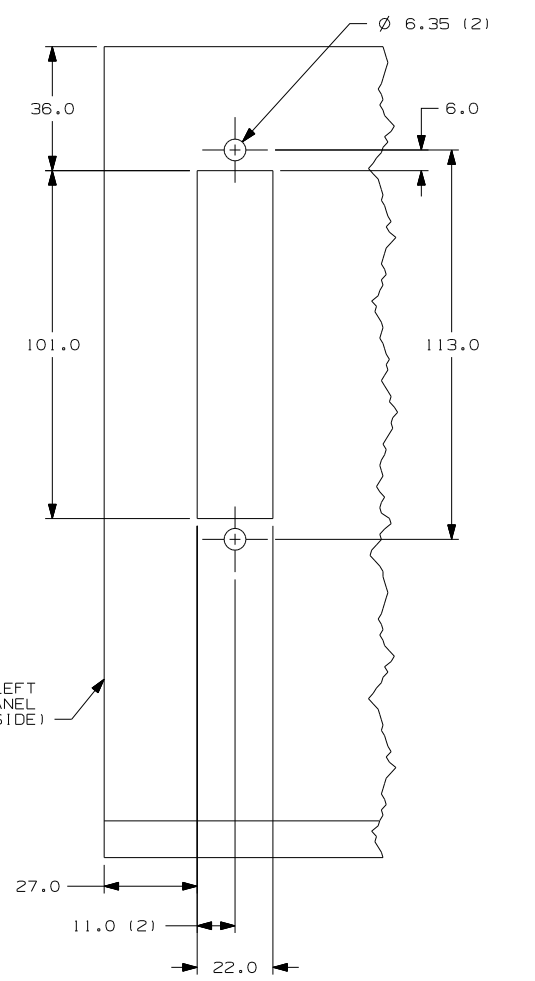
| | | |
|------------|----------------------|--------|
| FIRST USED | 07 726A | |
| TITLE | DO NOT SCALE DRAWING | |
| | WIRING INSTL-CHASSIS | |
| SHEET 2 | PART NO | 156847 |
| | REV | |



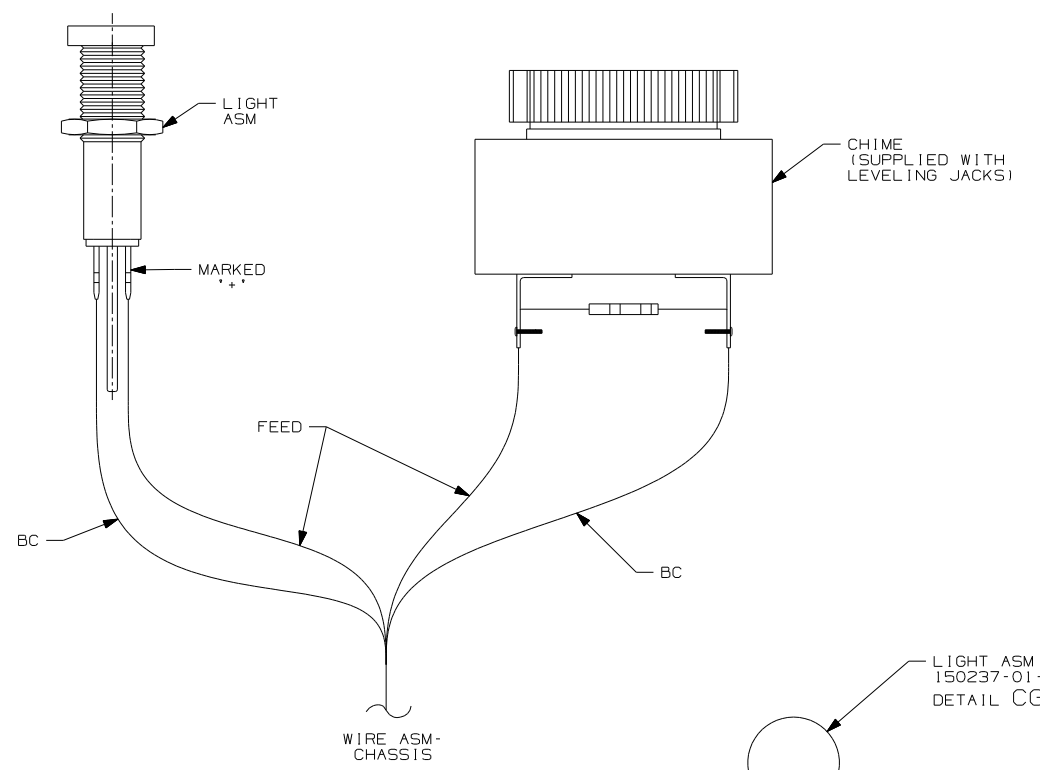
DETAIL CA (16E)



VIEW CC (IPY)



VIEW CB (16E)



DETAIL CG (60M)

PLATE-SWITCH
144363-12-CHT
NUT
112722-01-CHT (2)

SWITCH-RADIO
108357-08-000
ACTUATOR
108356-02-CHT

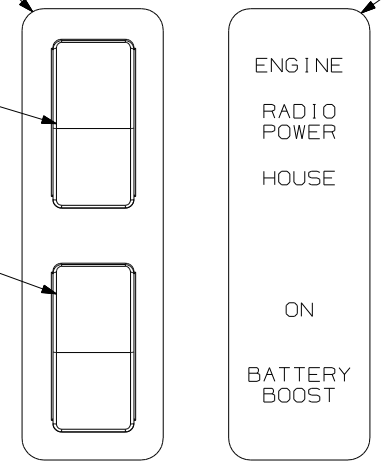
SWITCH-BATTERY BOOST
108357-09-000
ACTUATOR
108356-02-CHT

LIGHT ASM
150237-01-000
DETAIL CG (60M)

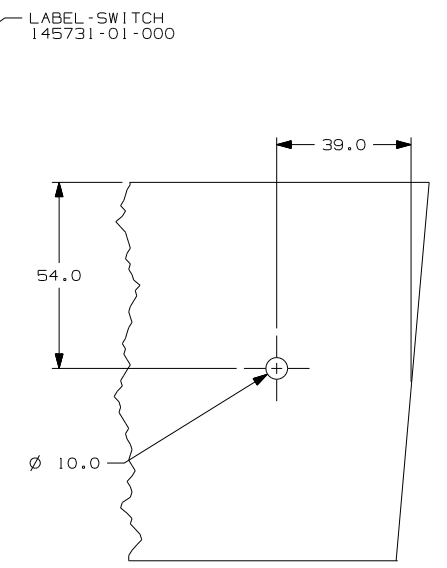
LABEL-JACKS DOWN
133533-01-CHT (60M)

JACKS DOWN

DETAIL CF (60M)



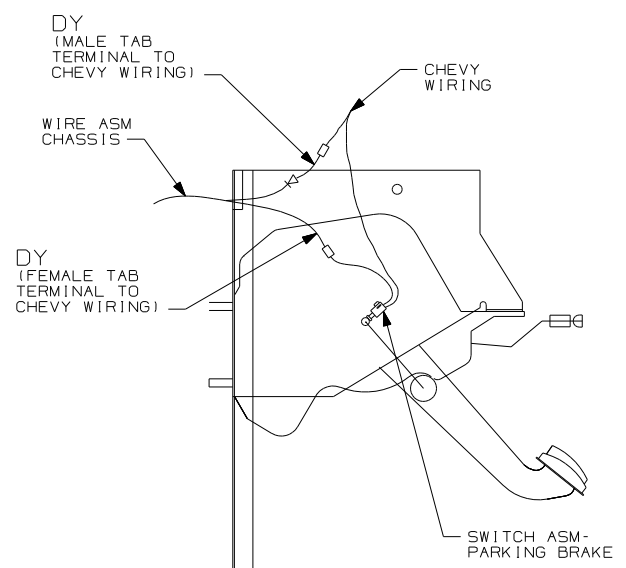
DETAIL CD (16E)



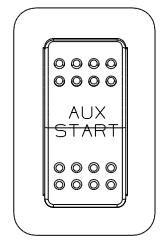
VIEW CE (60M)

- (60M) HYDRAULIC LEVEL JACKS-AUTO
- (IPY) CHEVY CHASSIS 14,050 LB GVWR
- (16E) FORD CHASSIS 14,050 LB.GVWR
- (22W) BATTERY-SECOND
- (12X) BATTERY-ONE
- (265) CODES/STANDARDS-CSA/CMVSS
- (1B1) CODES/STANDARDS USA

| | |
|----------------------|----------------------|
| FIRST USED | 07 726A |
| TITLE | DO NOT SCALE DRAWING |
| WIRING INSTL-CHASSIS | |
| SHEET 3 | PART NO 156847 REV |

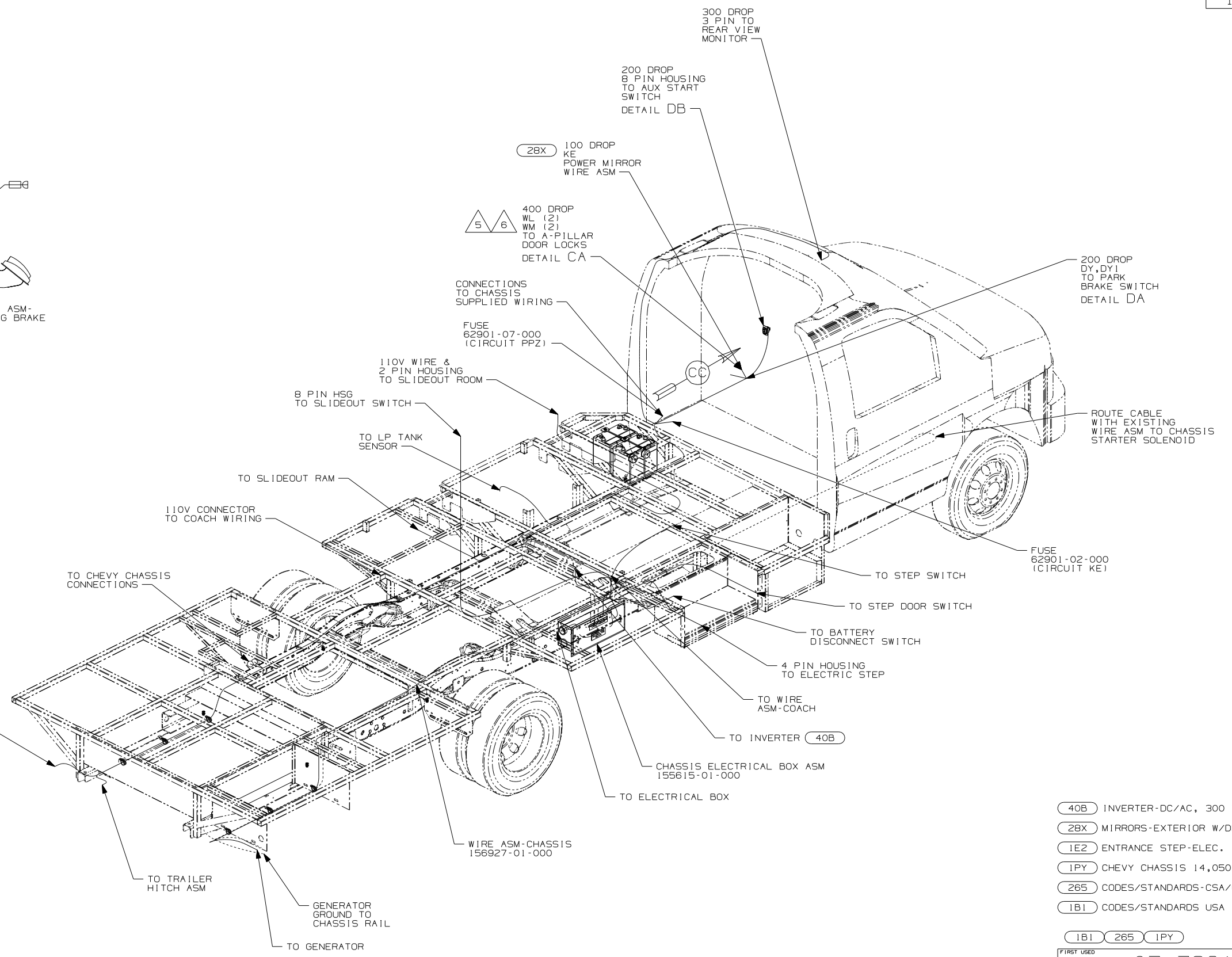


DETAIL DA



DETAIL DB

SWITCH-AUX START
108357-09-000
ACTUATOR
108356-07-CHT
PLATE-SWITCH
144363-07-000
NUT
112722-01-000 (2)

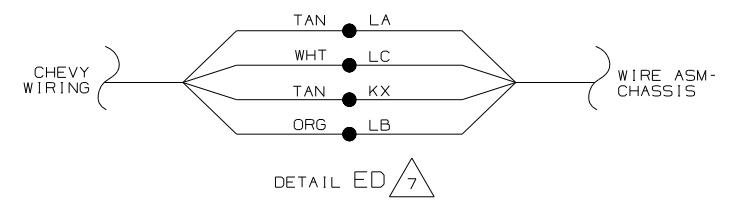
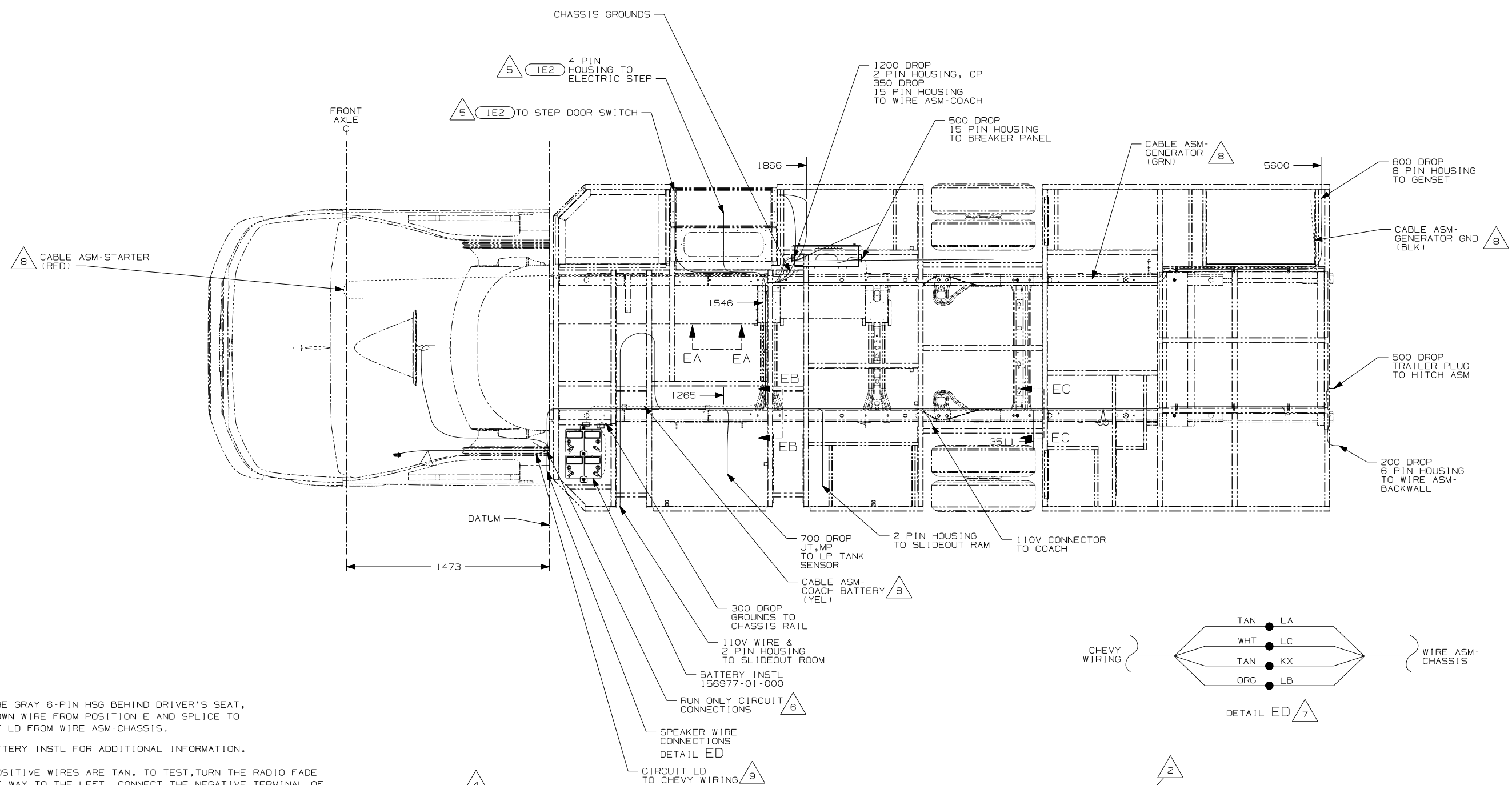


- 6 REMOVE A-PILLAR LOWER COVER TO ACCESS CHEVY CONNECTORS TO DOOR ASM. CONNECT GRAY TO WL (2 PLACES) AND CONNECT TAN TO WM (2 PLACES) FOR DOOR LOCK ACTUATOR.
- 5 THE TAN WIRE IS LOCATED IN POSITION A-4 AND THE GRAY WIRE IS IN POSITION D-5 OF THE 40 PIN CONNECTOR.
- 4 CUT WIRE AND RECONNECT AS SHOWN.
- 3. SECURE WIRE ASM AND CABLES WITH WIRE TIE 8343-01-000 OR 116673-01-000 AT NOT MORE THAN 600MM CENTER ALONG ENTIRE ROUTED PATH.
- 2. SECURE CONDUIT 41953, TAB AS REQUIRED, OVER ALL WIRES IN CONTACT WITH SHARP EDGES.
- 1. LEGEND: — WINNEBAGO: CABLE: - - - - - CHASSIS SUPPLIED WIRING.

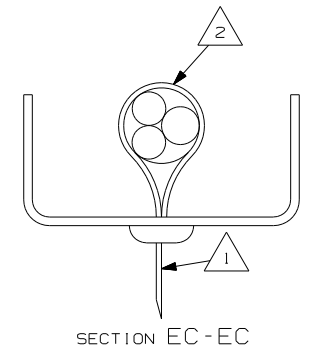
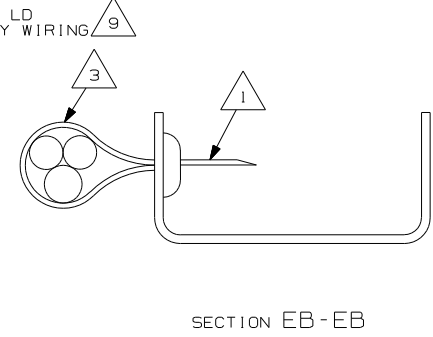
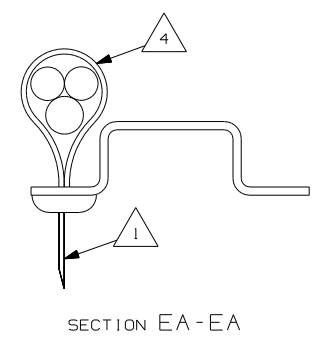
- 40B INVERTER-DC/AC, 300 WATT
- 28X MIRRORS-EXTERIOR W/DEFROST
- 1E2 ENTRANCE STEP-ELEC.
- 1PY CHEVY CHASSIS 14,050 LB GVWR
- 265 CODES/STANDARDS-CSA/CMVSS
- 1B1 CODES/STANDARDS USA

| | | |
|------------|----------------------|--------|
| FIRST USED | 07 726A | |
| TITLE | DO NOT SCALE DRAWING | |
| | WIRING INSTL-CHASSIS | |
| SHEET 4 | PART NO | 156847 |
| | REV | |

NOTES:



- 9 FIND THE GRAY 6-PIN HSG BEHIND DRIVER'S SEAT, CUT BROWN WIRE FROM POSITION E AND SPLICE TO CIRCUIT LD FROM WIRE ASM-CHASSIS.
- 8 SEE BATTERY INSTL FOR ADDITIONAL INFORMATION.
- 7 BOTH POSITIVE WIRES ARE TAN. TO TEST, TURN THE RADIO FADE ALL THE WAY TO THE LEFT. CONNECT THE NEGATIVE TERMINAL OF A TEST SPEAKER TO THE WHITE WIRE. THEN ALTERNATE THE TWO TAN WIRES TO THE POSITIVE TERMINAL. WHICHEVER IS LOUDER IS THE ONE THAT CONNECTS TO CIRCUIT LA. THE OTHER TAN WIRE CONNECTS TO CIRCUIT KX.
- 6 CONNECT "FEED" CIRCUIT TO CHEVY BROWN WIRE AT B-POST.
- 5 SECURE THE DROP BACK TO MAIN WIRE ASM WHEN NOT USED.
- 4 WIRES TO BE TIED TO CROSS MEMBER USING EXISTING HOLES.
- 3 WIRES TO BE TIED TO TOP OF RAIL USING EXISTING HOLES.
- 2 WIRES TO BE TIED TO INSIDE OF RAIL USING EXISTING HOLES.
- 1 CUT OFF EXCESS END OF WIRE TIE.



- 1E2 ENTRANCE STEP-ELEC.
- 1PY CHEVY CHASSIS 14,050 LB GVWR
- 265 CODES/STANDARDS-CSA/CMVSS
- 1B1 CODES/STANDARDS USA

| | |
|----------------------|----------------------|
| FIRST USED | 07 726A |
| TITLE | DO NOT SCALE DRAWING |
| WIRING INSTL-CHASSIS | |
| SHEET 5 | PART NO 156847 REV |