



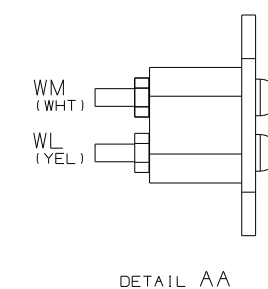
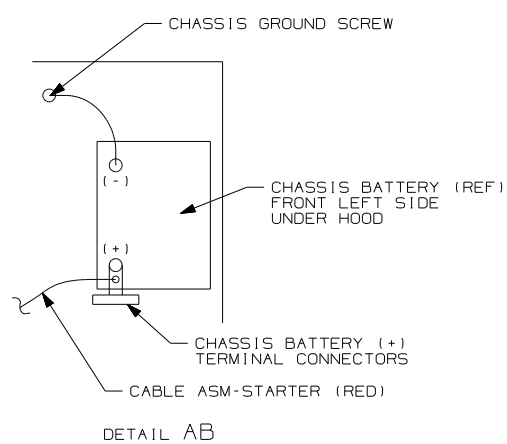
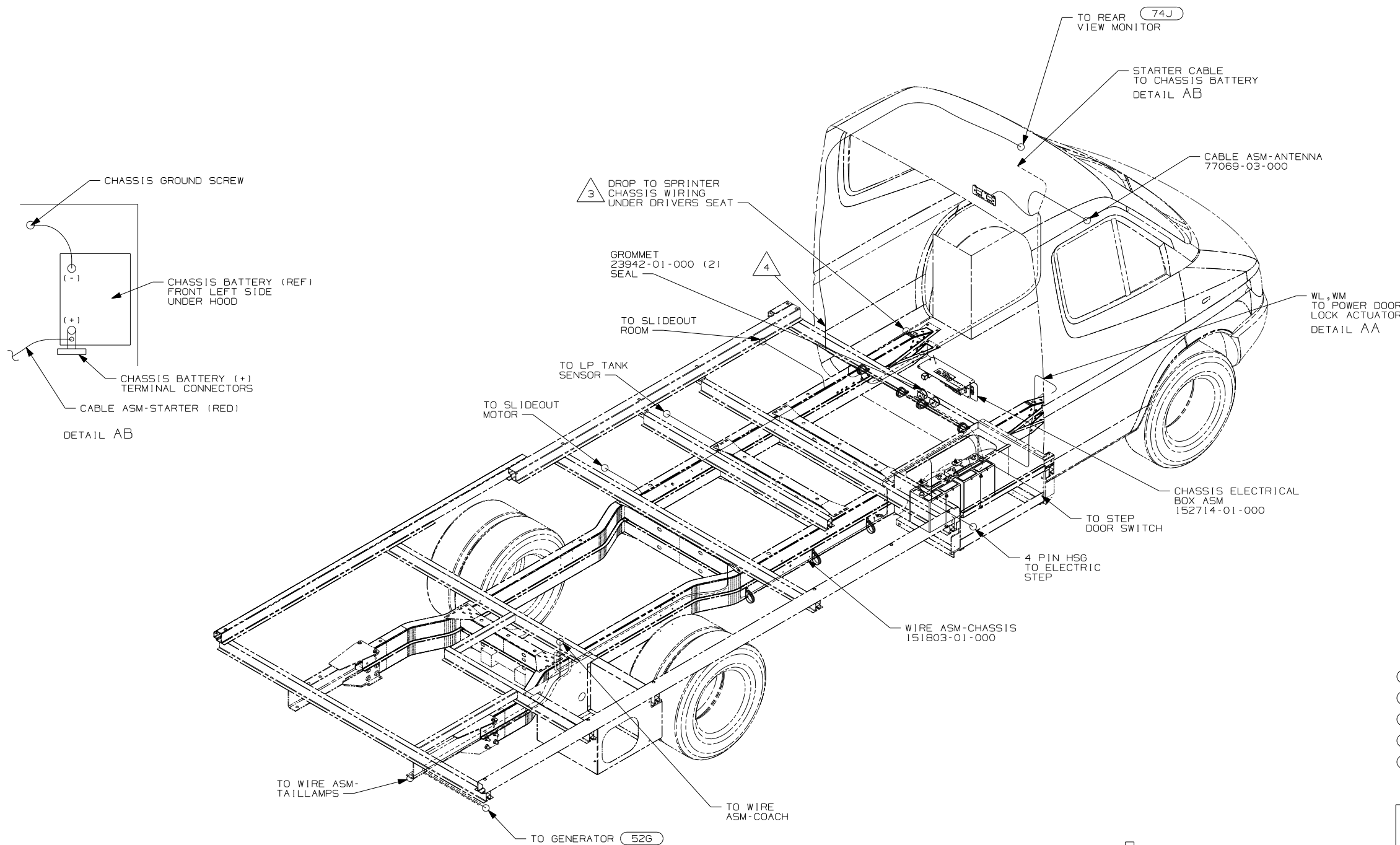
DANGER

Danger of electrical shock, burns or death. Always remove all power sources before attempting any repair, service or diagnostic work. Power can be present from shore power, generator, inverter or battery. All power sources must be disabled and secured before performing any service.



CAUTION

If you lack the skills, tools or equipment to perform diagnostic or repair work leave such work to an authorized Winnebago Industries dealer or other qualified shop.



- (74J) REARVIEW MONITOR SYS W/AUDIO
- (526) GEN-3.6KW ONAN LP MICROQUIET
- (1KA) DODGE - 10,200 LB. GVWR
- (265) CODES/STANDARDS-CSA/CMVSS
- (1B1) CODES/STANDARDS USA

WINNEBAGO		COPYRIGHT 2006 WINNEBAGO INDUSTRIES, INC.	
DFTR	ORIG. DATE	ALL DIMENSIONS ARE IN MILLIMETERS	
CHKR		MATERIAL:	
P.E.		WHOLE DIM (X)	: 3
M.E.		ONE-PLACE (X.X)	: 1.5
DSNR		TWO-PLACE (X.XX)	: 0.50
		ANGLE	: 1°
FIRST USED		THIRD ANGLE PROJECTION	
07 523H		DO NOT SCALE DRAWING	
TITLE: WIRING INSTL-CHASSIS			
SHEET 1 OF 3	PART NO	158748	
REF:	1 6/16/2006		

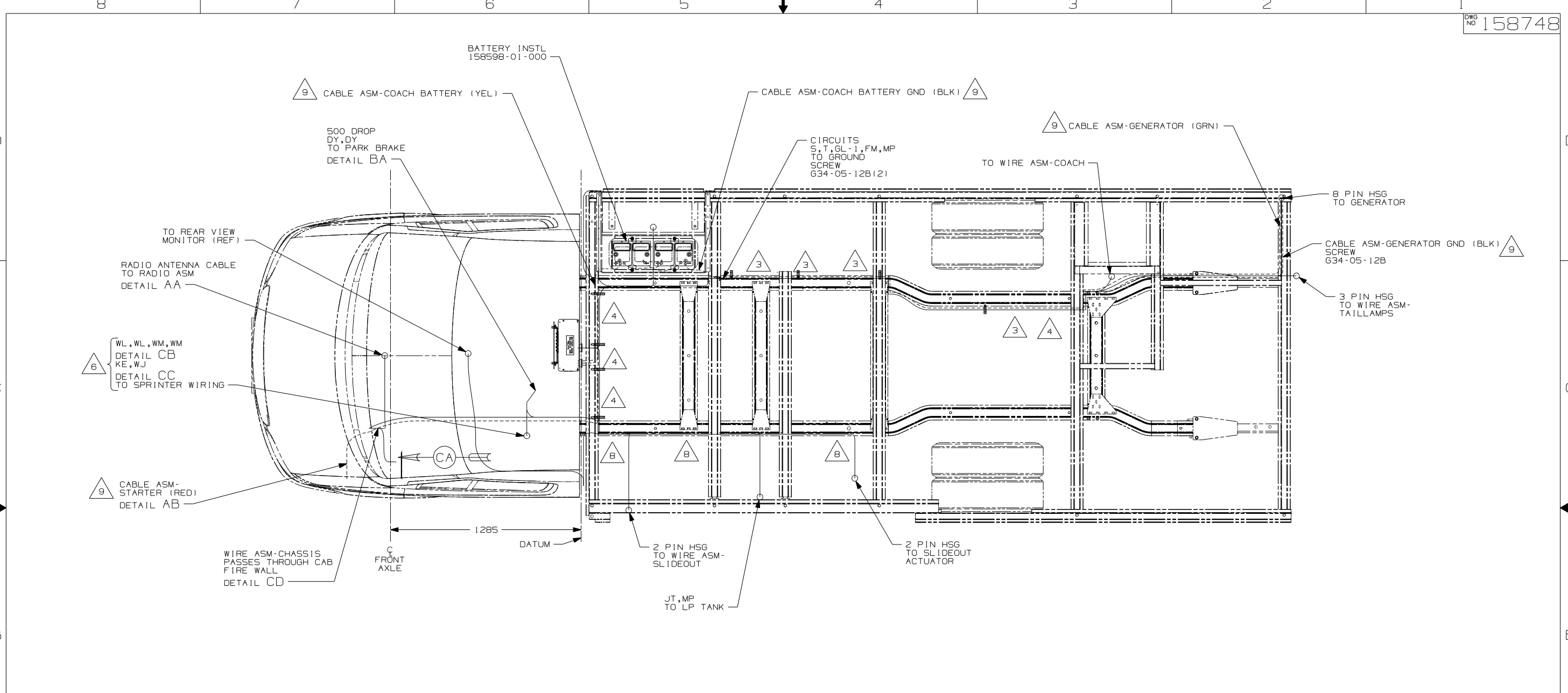
4. ROUTE WIRES FOR REAR VIEW MONITOR BETWEEN TRANSITION PANEL AND CAB IN THIS AREA.

3. CUT WIRE TIE AROUND SPRINTER SEAL. RUN THE CHASSIS WIRING THROUGH HOLE AND WIRE TIE SEAL WITH WIRE TIE 8343-04-000.

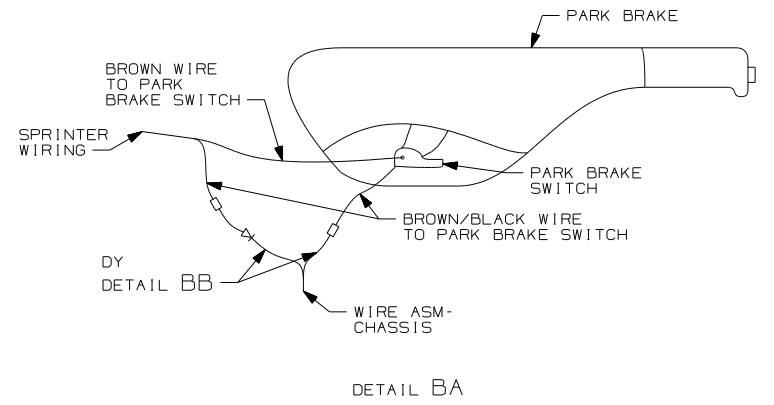
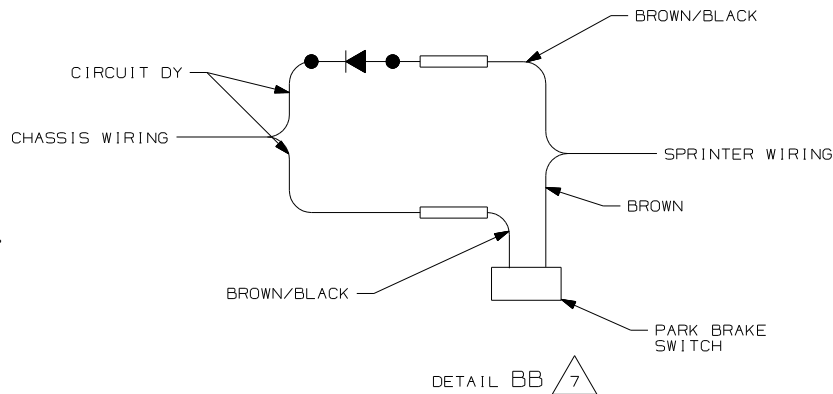
2. SECURE CONDUIT 41953, TAB AS REQUIRED, OVER ALL WIRES IN CONTACT WITH SHARP EDGES.

1. LEGEND: ——— WINNEBAGO: - - - - - CABLE: - - - - - CHASSIS SUPPLIED WIRING.

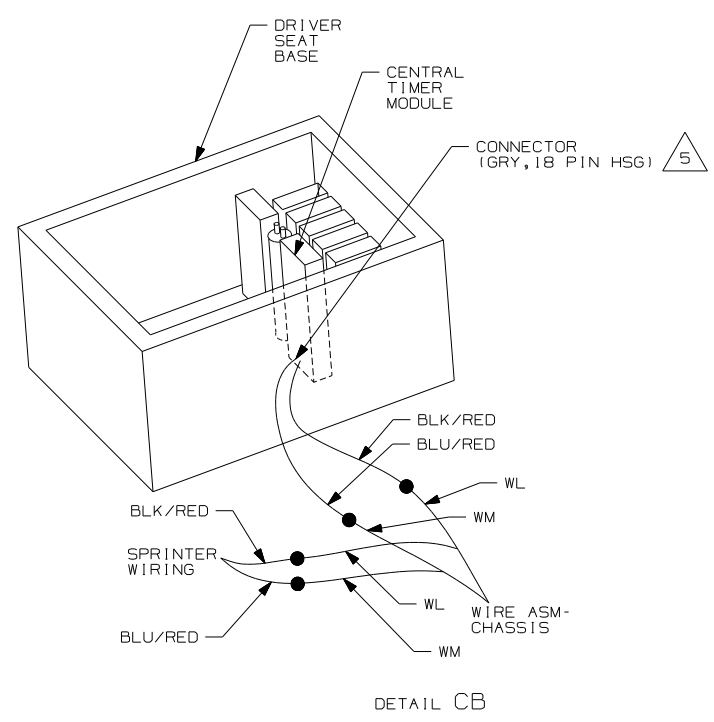
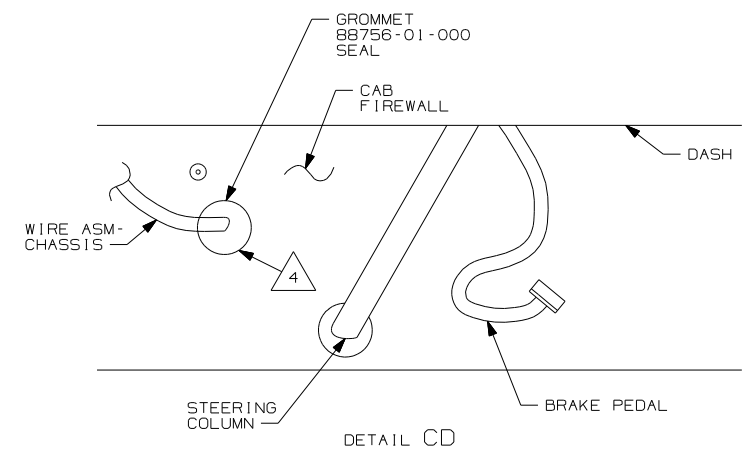
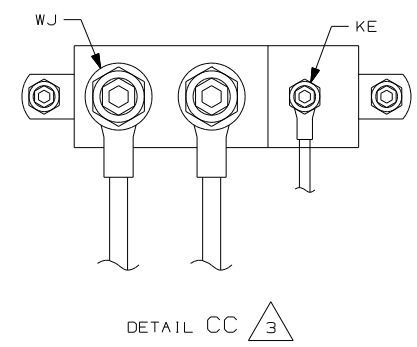
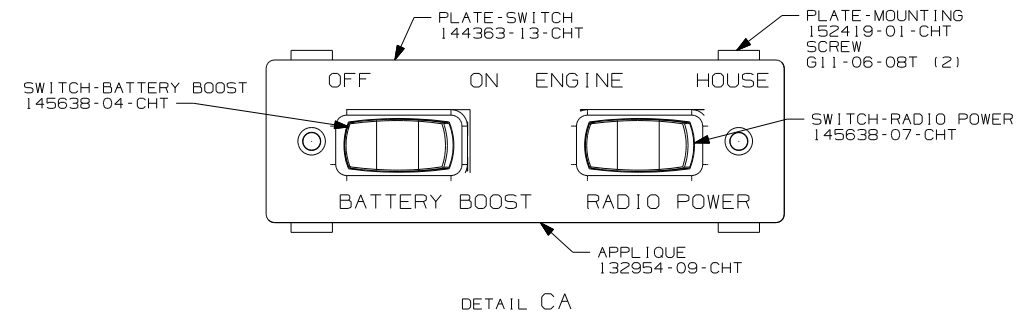
NOTES:



- 9 SEE BATTERY INSTALLATION FOR ADDITIONAL INFORMATION.
 - 8 TIE-WIRE MOUNT 92909-01-000, TIE WIRE 8343-02-000, RIVET 118626-01-CHT. USE EXISTING 6MM HOLES IN SPRINTER FRAME RAILS.
 - 7 CUT BROWN/BLACK WIRE FROM PARK BRAKE SWITCH AND RECONNECT TO CIRCUIT DY OF WIRE ASM-CHASSIS AS SHOWN.
 - 6 ROUTE WIRES THROUGH CAB FLOOR UNDER DRIVERS SEAT PEDESTAL.
 - 5 ROUTE MG,MD WIRES THROUGH U-CHANNELS BETWEEN SEAT PEDESTALS.
 - 4 CLAMP 83610-02-000, SCREW G39-08-12B. DO NOT DRILL OR SCREW INTO SPRINTER FRAME. USE ALUMINUM RISERS.
 - 3 CLAMP 83610-02-000, RIVET 118626-01-CHT. USE EXISTING 6MM HOLES IN SPRINTER FRAME RAILS.
2. SECURE CONDUIT 41953, TAB AS REQUIRED, OVER ALL WIRES IN CONTACT WITH SHARP EDGES.
1. LEGEND: — WINNEBAGO: - - - - - CABLE: - - - - - CHASSIS SUPPLIED WIRING.



1KA	DODGE - 10,200 LB. GVWR	
265	CODES/STANDARDS-CSA/CMVSS	
1B1	CODES/STANDARDS USA	
1B1	265	1KA
FIRST USED		
07 523H		
DO NOT SCALE DRAWING		
TITLE:		
WIRING INSTL-CHASSIS		
SHEET 2	PART NO	REV
	158748	



- 5 FIND THE GRY, 18 PIN CONNECTOR THAT PLUGS INTO THE CENTRAL TIMER MODULE UNDER THE DRIVERS SEAT AND SPLICE THE WM CIRCUIT INTO THE BLU/RED WIRE AND SPLICE THE WL CIRCUIT INTO THE BLK/RED WIRE.
- 4 REMOVE 30MM PLUG IN FIREWALL UNDER DASH. ROUTE WIRE ASM-CHASSIS FROM ENGINE COMPARTMENT THROUGH FIREWALL INTO CAB.
- 3 CONNECTION POINT IS LOCATED UNDER DRIVERS SEAT.
2. SECURE CONDUIT 41953, TAB AS REQUIRED, OVER ALL WIRES IN CONTACT WITH SHARP EDGES.
1. LEGEND: — WINNEBAGO: - - - - - CABLE: - - - - - CHASSIS SUPPLIED WIRING.

- 1KA DODGE - 10,200 LB. GVWR
- 265 CODES/STANDARDS-CSA/CMVSS
- 1B1 CODES/STANDARDS USA

FIRST USED	07 523H
DO NOT SCALE DRAWING	
TITLE	WIRING INSTL-CHASSIS
SHEET 3	PART NO 158748 REV