



DANGER

Danger of electrical shock, burns or death. Always remove all power sources before attempting any repair, service or diagnostic work. Power can be present from shore power, generator, inverter or battery. All power sources must be disabled and secured before performing any service.

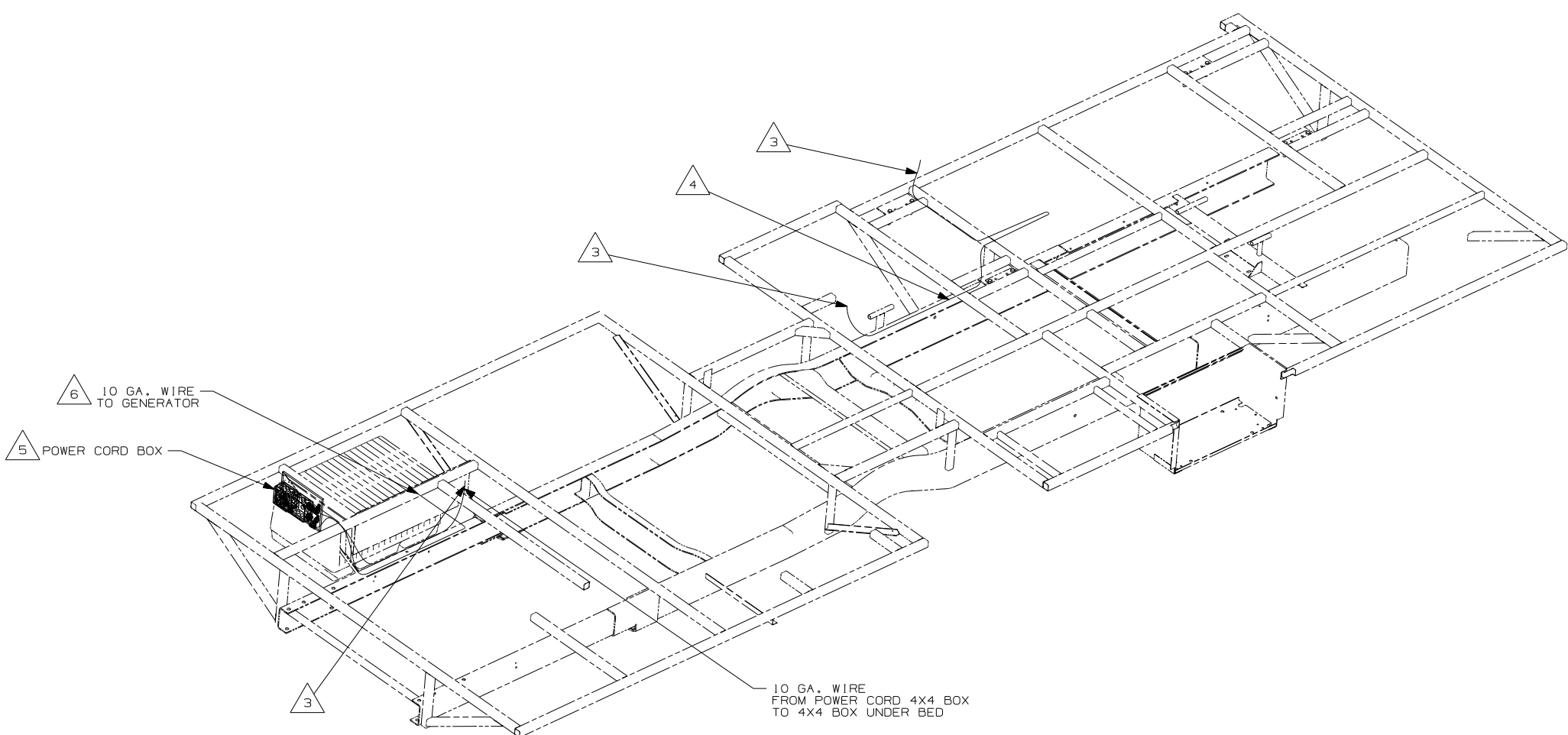


CAUTION

If you lack the skills, tools or equipment to perform diagnostic or repair work leave such work to an authorized Winnebago Industries dealer or other qualified shop.

| DRAWING NO. | FEATURE |
|-------------|-------------|
| 158215-01 | ----- |
| 158215-11 | (1B1) (12D) |
| 158215-15 | (265) (12D) |

| | | |
|----------|-----------------|---------------|
| RELEASE | REV DATE | DWG NO |
| A | | 158215 |
| REV ZONE | REVISION RECORD | DATE DFR-ORIG |



- (12D) ELECTRICAL SYSTEM 30 AMP
- (265) CODES/STANDARDS-CSA/CMVSS
- (1B1) CODES/STANDARDS USA

- △ 6 SEE GENERATOR INSTL FOR ADDITIONAL INFORMATION.
 - △ 5 SEE LOAD CENTER/ATS ASM FOR ADDITIONAL INFORMATION.
 - △ 4 CORD IS PART OF WIRE ASM-CHASSIS.
 - △ 3 ROUTE WIRE THRU FLOOR.
2. ALL 110V WIRE TO BE CLAMPED WITH CLAMP 10497-05-000 WITHIN 200MM OF OUTLET BOXES, USE SCREW G67-10-12B.
 1. ALL WIRES TO BE SECURED WITH CLAMP 10495 OR 10497 OR WIRE TIE 8343 OR 108046 EVERY 600MM, USE SCREW G67-XX-XXX OR G56-XX-XXX AS APPROPRIATE FOR INSTALLATION.

WINNEBAGO COPYRIGHT 2006 WINNEBAGO INDUSTRIES, INC.

| | |
|------|-----------------------------------|
| DFTR | ORIG. DATE |
| CHKR | ALL DIMENSIONS ARE IN MILLIMETERS |
| P.E. | |
| M.E. | FIRST USED |
| DSNR | 07 331H |

UNSPECIFIED TOLERANCES ARE: MATERIAL:

| | |
|------------------|--------|
| WHOLE DIM (X) | : 3 |
| ONE-PLACE (X.X) | : 1.5 |
| TWO-PLACE (X.XX) | : 0.50 |
| ANGLE | : 1° |

THIRD ANGLE PROJECTION

FOR ELECTRICAL TORQUE SPECIFICATIONS SEE DWG NO. 128783-01-000

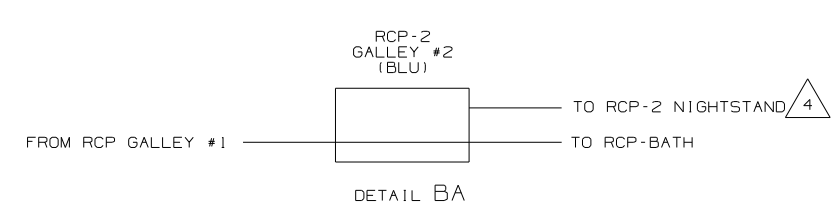
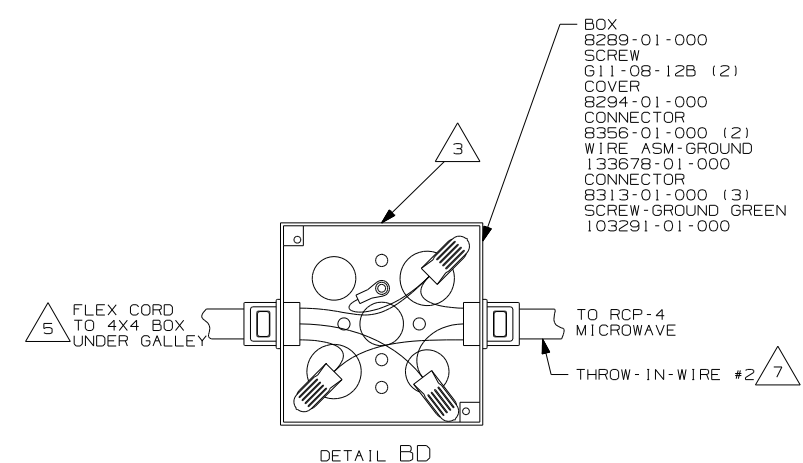
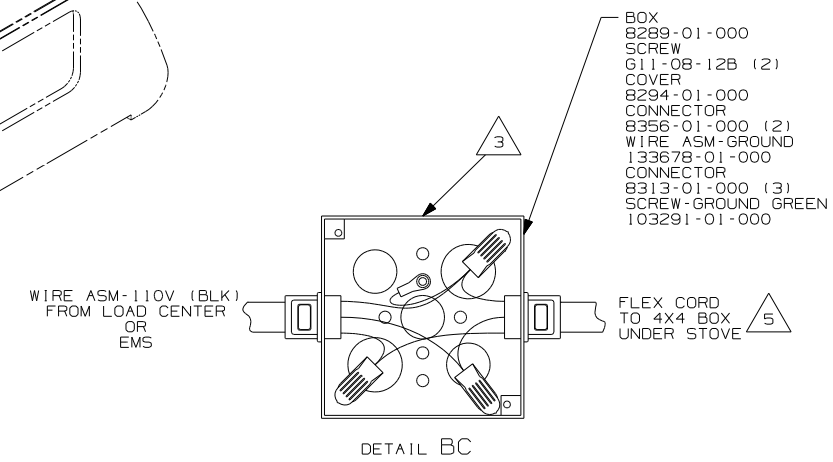
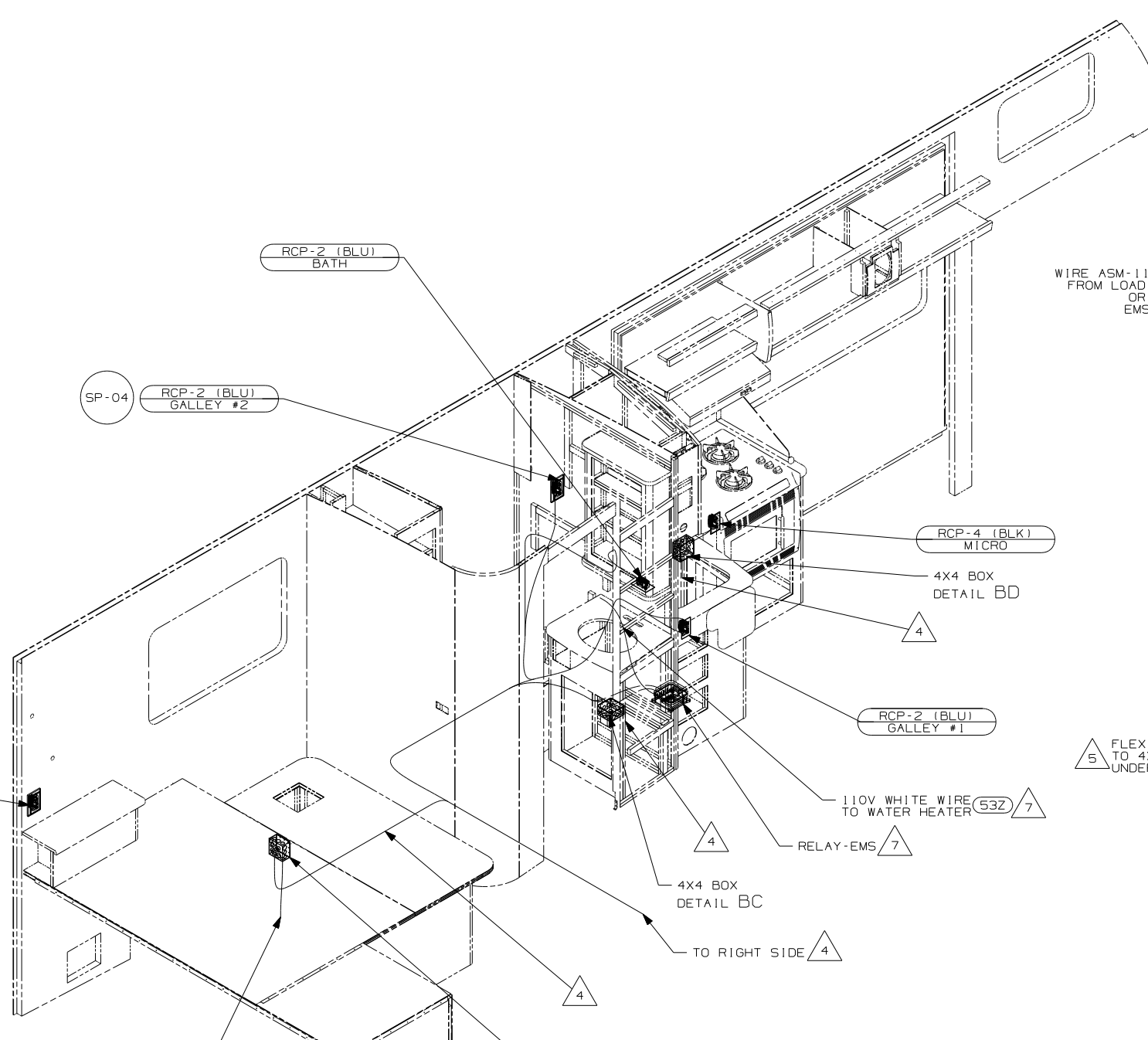
(X-X) FOR ELECTRICAL CALLOUTS SEE DWG NO. 121339-01-000

DO NOT SCALE DRAWING

TITLE: WIRING INSTL-BODY, 110V

SHEET 1 OF 3 PART NO 158215 REV

REF: 1 6/27/2006



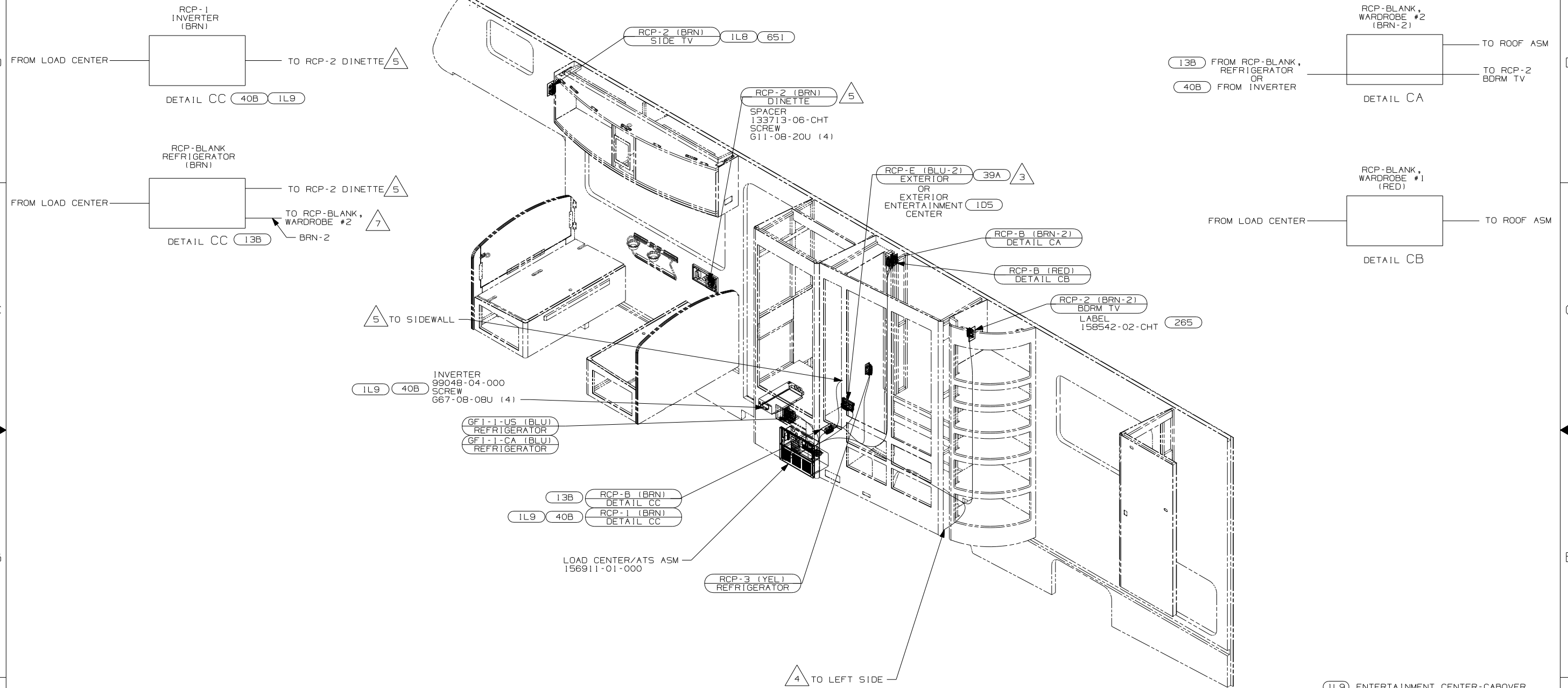
- NOTES:
- 8 ALL GROUND WIRES TO BE COVERED WITH TUBING 8041-02-000.
 - 7 SEE LOAD CENTER/ATS ASM FOR ADDITIONAL INFORMATION.
 - 6 WIRE ROUTED IN SIDEWALL.
 - 5 FLEX CORD IS PART OF WIRE ASM-CHASSIS.
 - 4 ROUTE WIRE THRU FLOOR.
 - 3 CONNECT WIRES, WHT TO WHT, BLK TO BLK, GROUNDS TO GROUNDS, KEEPING CIRCUITS SEPERATED.
2. ALL 110V WIRE TO BE CLAMPED WITH CLAMP 10497-05-000 WITHIN 200MM OF OUTLET BOXES, USE SCREW G67-10-12B.
1. ALL WIRES TO BE SECURED WITH CLAMP 10495 OR 10497 OR WIRE TIE 8343 OR 108046 EVERY 600MM, USE SCREW G67-XX-XXX OR G56-XX-XXX AS APPROPRIATE FOR INSTALLATION.

- 40N GEN-4.0KW-ONANGAS-MICROQUIET
- 12D ELECTRICAL SYSTEM 30 AMP
- 265 CODES/STANDARDS-CSA/CMVSS
- 1B1 CODES/STANDARDS USA

FOR ELECTRICAL TORQUE SPECIFICATIONS SEE DWG NO. 128783-01-000

FOR ELECTRICAL CALLOUTS SEE DWG NO. 121339-01-000

| | |
|--------------------------------|--------------------|
| FIRST USED | |
| 07 331H | |
| DO NOT SCALE DRAWING | |
| TITLE: WIRING INSTL-BODY, 110V | |
| SHEET 2 | PART NO 158215 REV |



- △ 7 WIRE CONNECTS TO THE OUTPUT OF THE INVERTER WITH 40B
- △ 6 SEE LOAD CENTER/ATS ASSEMBLY FOR ADDITIONAL INFORMATION.
- △ 5 WIRE ROUTED IN SIDEWALL.
- △ 4 ROUTE WIRE THRU FLOOR.
- △ 3 NOT USED WITH 1D5 .

2. ALL 110V WIRE TO BE CLAMPED WITH CLAMP 10497-05-000 WITHIN 200MM OF OUTLET BOXES, USE SCREW 667-10-12B.
1. ALL WIRES TO BE SECURED WITH CLAMP 10495 OR 10497 OR WIRE TIE 8343 OR 108046 EVERY 600MM, USE SCREW 667-XX-XXX OR 656-XX-XXX AS APPROPRIATE FOR INSTALLATION.

NOTES:

- 1L9 ENTERTAINMENT CENTER-CABOVER
- 12D ELECTRICAL SYSTEM 30 AMP
- 13B INVERTER/CHARGER-DC/AC W/O
- 39A EXT RECEPTACLE DPLX 120VAC
- 1D5 ENTERTAINMENT CENTR/EXT W/CD
- 40B INVERTER-DC/AC, 300 WATT
- 265 CODES/STANDARDS-CSA/CMVSS
- 1B1 CODES/STANDARDS USA

| | | |
|-------------------------|---------|-----|
| 1B1 | 265 | 12D |
| FIRST USED | | |
| 07 331H | | |
| DO NOT SCALE DRAWING | | |
| TITLE: | | |
| WIRING INSTL-BODY, 110V | | |
| SHEET 3 | PART NO | REV |
| | 158215 | |