



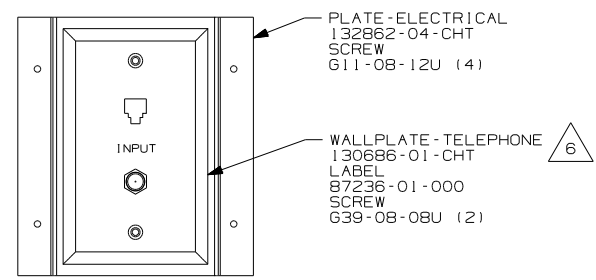
DANGER

Danger of electrical shock, burns or death. Always remove all power sources before attempting any repair, service or diagnostic work. Power can be present from shore power, generator, inverter or battery. All power sources must be disabled and secured before performing any service.

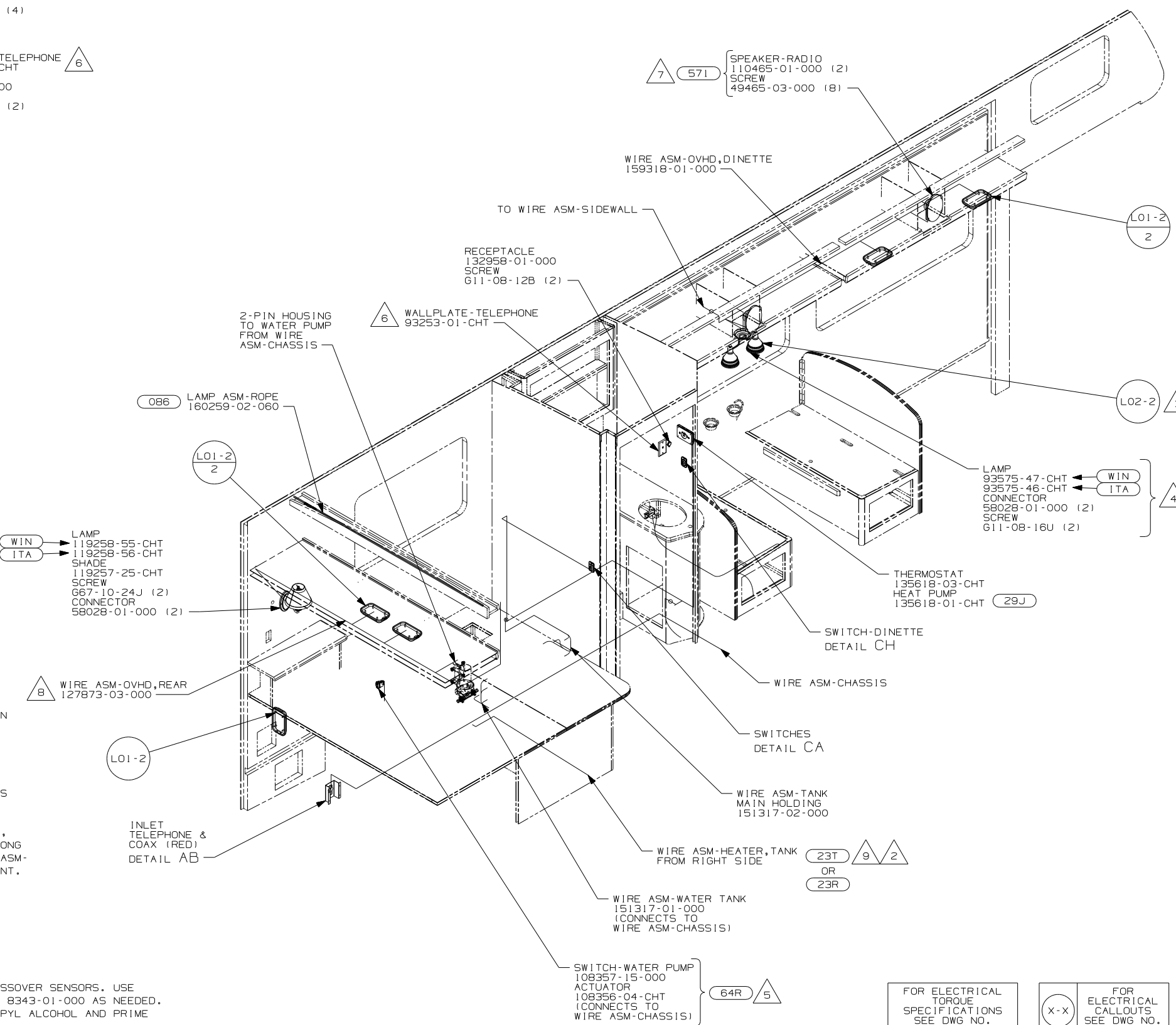


CAUTION

If you lack the skills, tools or equipment to perform diagnostic or repair work leave such work to an authorized Winnebago Industries dealer or other qualified shop.



DETAIL AB



- 9 WIRE ROUTED ALONG DRAINAGE PIPE.
- 8 NOT USED WITH 086
- 7 USE ONE OF THE 4 SPEAKER ASM'S PROVIDED IN KIT. SEND SCREW IN THE KIT TO THE SURPLUS STORE TO BE SOLD. SEND THE WIRE ASM W/HSG TO WIRE PREP TO BE INCORPORATED INTO THE NECESSARY WIRE LOOM.
- 6 CONNECT TELEPHONE WIRES TO MATCHING COLORS ON PLATE-TELEPHONE.
- 5 WITHOUT 64R INSTALL SWITCH ON WIRE ASM, ROUTE & SECURE PUMP SWITCH BRANCH BACK ALONG FRAME RAIL, THRU UPPER FLOOR ASM AT WIRE ASM-CHASSIS AND WIRE ASM-RIGHT CONNECTION POINT.
- 4 USED ONLY ON 331C & 331T.
- 3 USED ONLY ON 331SC & 331ST.
- 2 SEE DRAINAGE SYSTEM INSTL FOR HEATER PAD PART NUMBERS AND LOCATIONS.

NOTES:

- ROUTE TANK SENSOR WIRES SO THEY DO NOT PASSOVER SENSORS. USE WIRE TIE MOUNT 155366-01-000 AND WIRE TIE 8343-01-000 AS NEEDED. TANK SURFACE MUST BE CLEANED USING ISOPROPYL ALCOHOL AND PRIME WITH PRIMER 94

- 23R DRAINAGE SYSTEM/HEAT-PREP
- 086 INTERIOR UPGRADE PACKAGE
- 64R EXTERIOR WASH STATION
- 571 RADIO SPEAKERS
- 29J AC HEAT PUMP-1
- 23T DRAINAGE SYSTEM-HEATED
- ITA ITASCA ONLY
- WIN WINNEBAGO ONLY
- 265 CODES/STANDARDS-CSA/CMVSS
- 1B1 CODES/STANDARDS USA

WINNEBAGO COPYRIGHT 2006 WINNEBAGO INDUSTRIES, INC.

DFTR	ORIG. DATE
CHKR	ALL DIMENSIONS ARE IN MILLIMETERS
P.E.	FIRST USED
M.E.	07 331C
DSNR	

UNSPECIFIED TOLERANCES ARE: MATERIAL:

WHOLE DIM (X)	: 3
ONE-PLACE (X.X)	: 1.5
TWO-PLACE (X.XX)	: 0.50
ANGLE	: 1°

THIRD ANGLE PROJECTION

DO NOT SCALE DRAWING

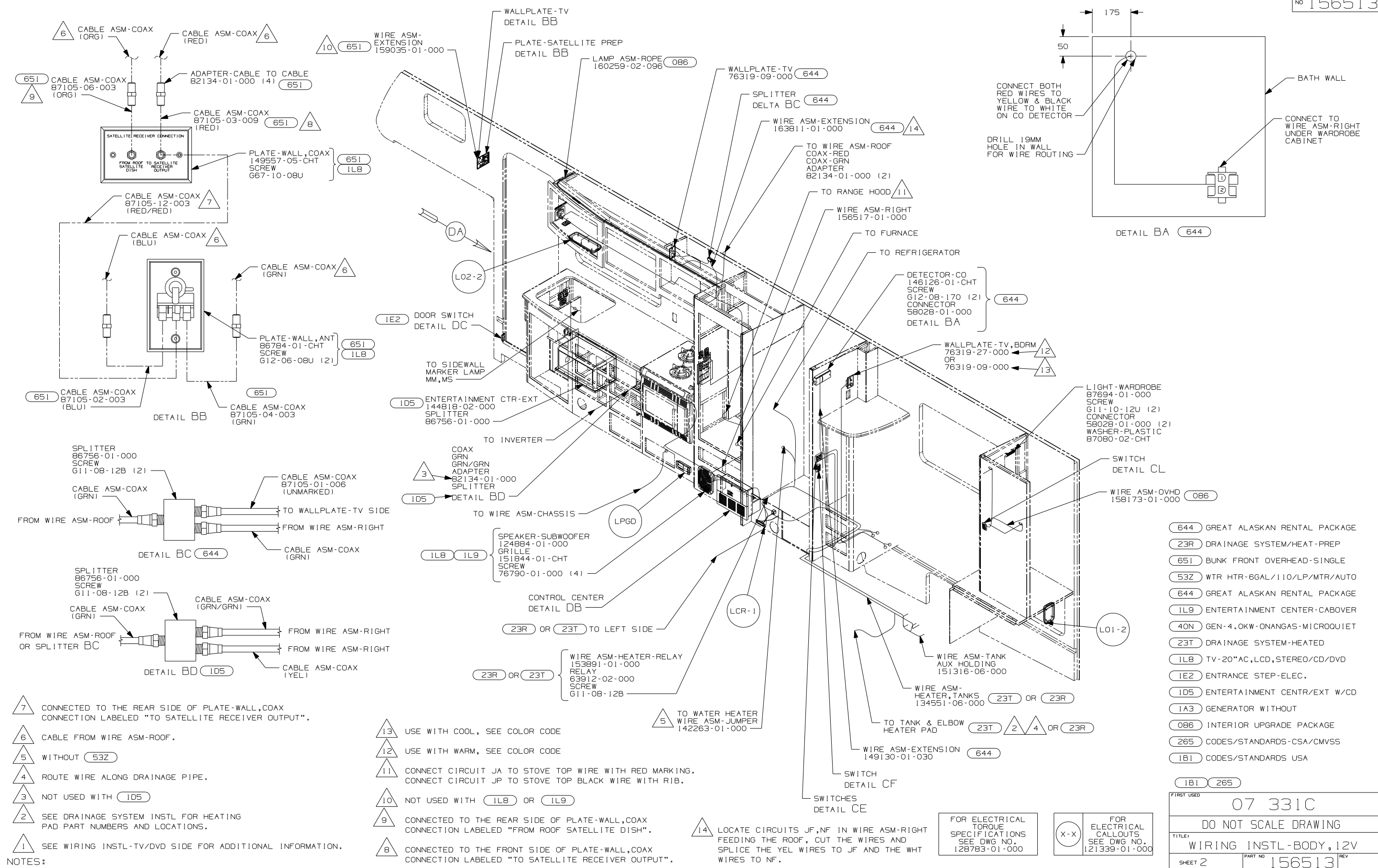
TITLE: WIRING INSTL-BODY, 12V

SHEET 1 OF 6 PART NO 156513 REV

REF: 1 1/11/2007

FOR ELECTRICAL TORQUE SPECIFICATIONS SEE DWG NO. 128783-01-000

X-X FOR ELECTRICAL CALLOUTS SEE DWG NO. 121339-01-000



- NOTES:
- 7 CONNECTED TO THE REAR SIDE OF PLATE-WALL,COAX CONNECTION LABELED "TO SATELLITE RECEIVER OUTPUT".
 - 6 CABLE FROM WIRE ASM-ROOF.
 - 5 WITHOUT 53Z
 - 4 ROUTE WIRE ALONG DRAINAGE PIPE.
 - 3 NOT USED WITH 1D5
 - 2 SEE DRAINAGE SYSTEM INSTL FOR HEATING PAD PART NUMBERS AND LOCATIONS.
 - 1 SEE WIRING INSTL-TV/DVD SIDE FOR ADDITIONAL INFORMATION.

- 13 USE WITH COOL, SEE COLOR CODE
- 12 USE WITH WARM, SEE COLOR CODE
- 11 CONNECT CIRCUIT JA TO STOVE TOP WIRE WITH RED MARKING. CONNECT CIRCUIT JP TO STOVE TOP BLACK WIRE WITH RIB.
- 10 NOT USED WITH 1L8 OR 1L9
- 9 CONNECTED TO THE REAR SIDE OF PLATE-WALL,COAX CONNECTION LABELED "FROM ROOF SATELLITE DISH".
- 8 CONNECTED TO THE FRONT SIDE OF PLATE-WALL,COAX CONNECTION LABELED "TO SATELLITE RECEIVER OUTPUT".

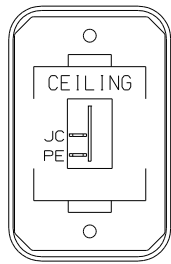
14 LOCATE CIRCUITS JF,NF IN WIRE ASM-RIGHT FEEDING THE ROOF, CUT THE WIRES AND SPLICE THE YEL WIRES TO JF AND THE WHT WIRES TO NF.

FOR ELECTRICAL TORQUE SPECIFICATIONS SEE DWG NO. 128783-01-000

FOR ELECTRICAL CALLOUTS SEE DWG NO. 121339-01-000

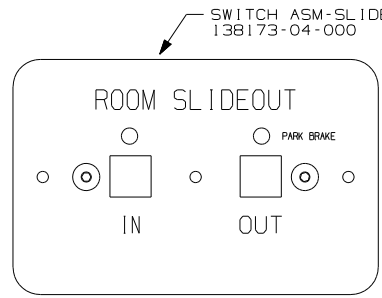
- 644 GREAT ALASKAN RENTAL PACKAGE
- 23R DRAINAGE SYSTEM/HEAT-PREP
- 651 BUNK FRONT OVERHEAD-SINGLE
- 53Z WTR HTR-6GAL/110/LP/MTR/AUTO
- 644 GREAT ALASKAN RENTAL PACKAGE
- 1L9 ENTERTAINMENT CENTER-CABOVER
- 40N GEN-4.0KW-ONANGAS-MICROQUIET
- 23T DRAINAGE SYSTEM-HEATED
- 1L8 TV-20"AC,LCD,STEREO/CD/DVD
- 1E2 ENTRANCE STEP-ELEC.
- 1D5 ENTERTAINMENT CENTR/EXT W/CD
- 1A3 GENERATOR WITHOUT
- 086 INTERIOR UPGRADE PACKAGE
- 265 CODES/STANDARDS-CSA/CMVSS
- 1B1 CODES/STANDARDS USA

FIRST USED	07 331C
DO NOT SCALE DRAWING	
TITLE:	WIRING INSTL-BODY,12V
SHEET 2	PART NO 156513 REV



SWITCH-ROCKER
135740-01-CHT
SWITCH-BASE
135741-01-CHT
SWITCH-BEZEL
135742-07-CHT
SCREW
G11-08-08U (2)

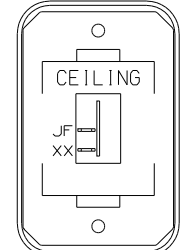
DETAIL CA



SWITCH-ASM-SLIDEOUT
138173-04-000

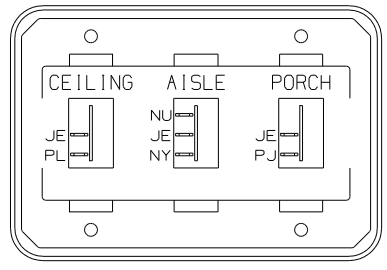
WARNING UNDERSTAND OPERATOR'S MANUAL BEFORE USING
KEEP PEOPLE AND OBSTRUCTIONS CLEAR OF
SLIDEOUT ROOM WHEN OPERATING TO AVOID
INJURY AND/OR PROPERTY DAMAGE

DETAIL CD

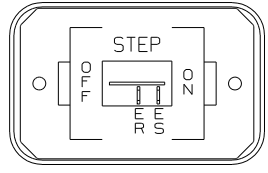


SWITCH-ROCKER
135740-01-CHT
SWITCH-BASE
135741-01-CHT
SWITCH-BEZEL
135742-07-CHT
SCREW
G11-08-08U (2)

DETAIL CH

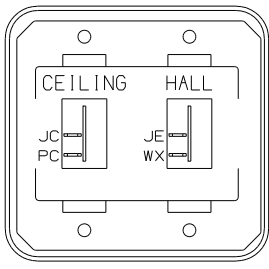


SWITCH-ROCKER
135740-01-CHT (2)
135740-02-CHT
SWITCH-BASE
135741-03-CHT
SWITCH-BEZEL
135742-26-CHT
SCREW
G11-08-08U (4)



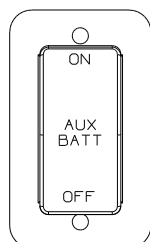
SWITCH-ROCKER
135740-01-CHT
SWITCH-BASE
135741-01-CHT
SWITCH-BEZEL
135742-11-CHT
SCREW
G11-08-08U (2)

DETAIL CB

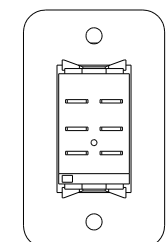


SWITCH-ROCKER
135740-01-CHT (2)
SWITCH-BASE
135741-02-CHT
SWITCH-BEZEL
135742-16-CHT
SCREW
G11-08-08U (4)

DETAIL CE

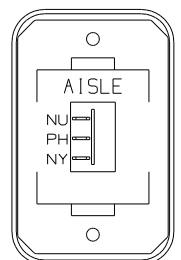


DETAIL CC (FRONT SIDE)



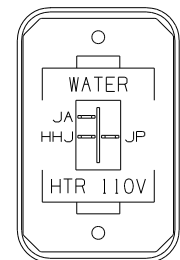
DETAIL CC (BACK SIDE)

SWITCH-BATTERY, DISC
108357-06-000
ACTUATOR-SWITCH
108356-11-CHT
PLATE-SWITCH
98351-07-CHT
SCREW
G11-06-10U (2)



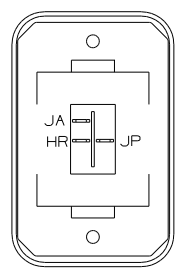
SWITCH-ROCKER
135740-01-CHT
SWITCH-BASE
135741-01-CHT
SWITCH-BEZEL
135742-06-CHT
SCREW
G11-08-08U (2)

DETAIL CF



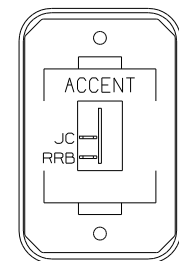
SWITCH-ROCKER
135740-06-CHT
SWITCH-BASE
135741-01-CHT
SWITCH-BEZEL
135742-35-CHT
SCREW
G11-08-08U (2)

DETAIL CK (53Z)



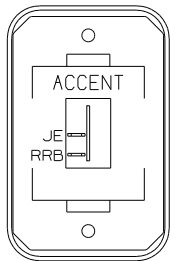
SWITCH-ROCKER
135740-06-CHT
SWITCH-BASE
135741-01-CHT
SWITCH-BEZEL
135742-01-CHT
SCREW
G11-08-08U (2)
LABEL-SWITCH
134563-01-CHT

DETAIL CL (086)



SWITCH-ROCKER
135740-01-CHT
SWITCH-BASE
135741-01-CHT
SWITCH-BEZEL
135742-50-CHT
SCREW
G11-08-08U (2)

DETAIL CL (086)



SWITCH-ROCKER
135740-01-CHT
SWITCH-BASE
135741-01-CHT
SWITCH-BEZEL
135742-50-CHT
SCREW
G11-08-08U (2)

DETAIL CM (086)

HOLDING TANK HEATER
TURN OFF When Not In Use
SEE OPERATORS MANUAL

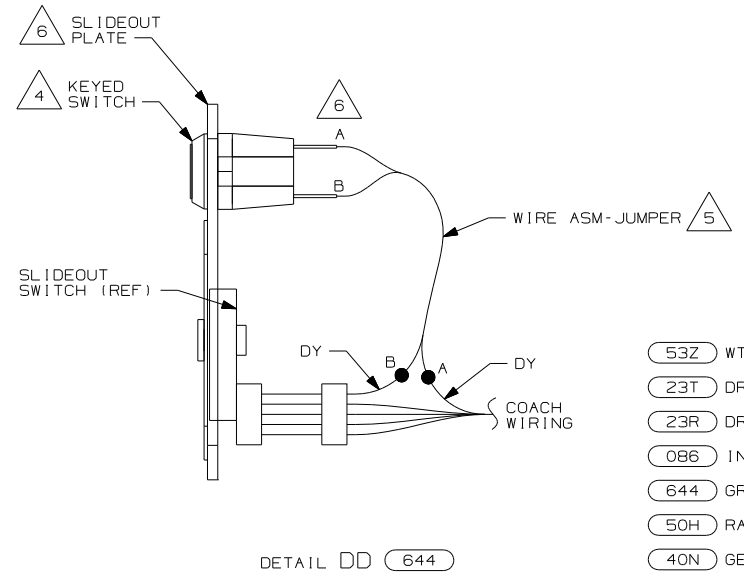
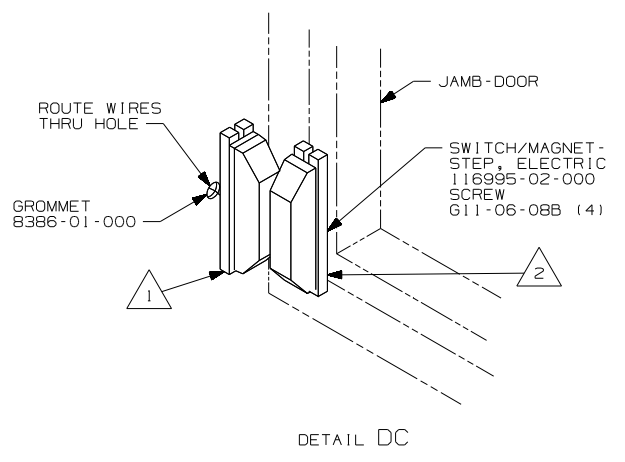
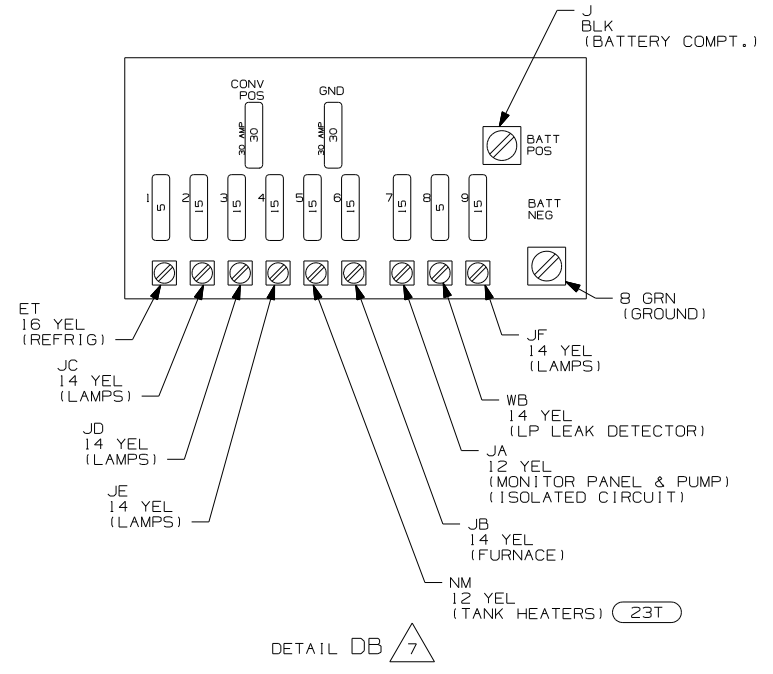
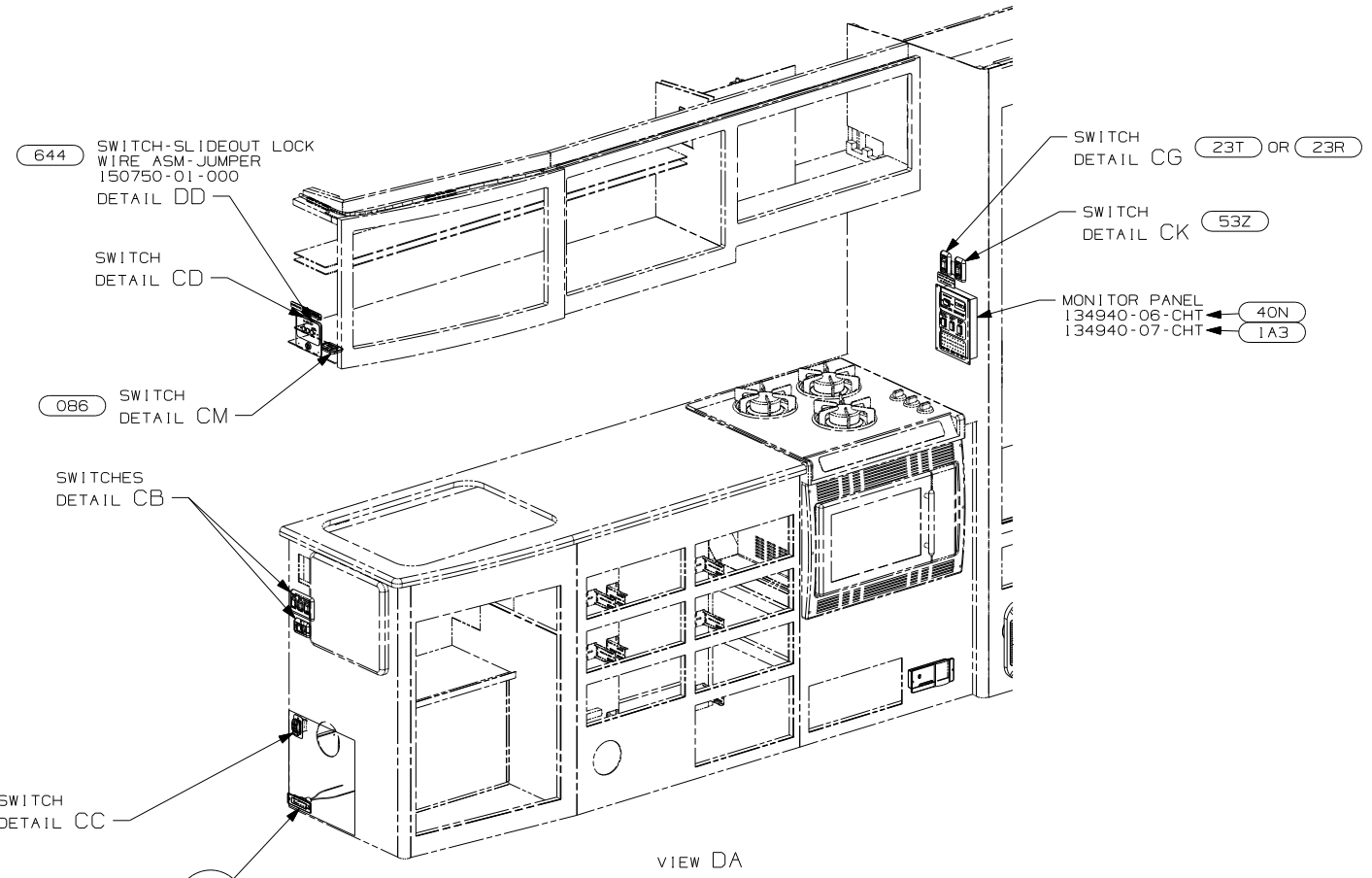
DETAIL CG (23T) OR (23R)

FOR ELECTRICAL
TORQUE
SPECIFICATIONS
SEE DWG NO.
128783-01-000

FOR
ELECTRICAL
CALLOUTS
SEE DWG NO.
121339-01-000

- (23R) DRAINAGE SYSTEM/HEAT-PREWIRE
- (53Z) WTR HTR-6GAL/110/LP/MTR/AUTO
- (23T) DRAINAGE SYSTEM-HEATED
- (1E2) ENTRANCE STEP-ELEC.
- (086) INTERIOR UPGRADE PACKAGE
- (265) CODES/STANDARDS-CSA/CMVSS
- (1B1) CODES/STANDARDS USA

FIRST USED	07 331C
TITLE	DO NOT SCALE DRAWING
SHEET 3	WIRING INSTL-BODY, 12V
PART NO	156513
REV	



- NOTES:
- 7 FOR REFERENCE ONLY. SEE LOAD CENTER/ATS ASM FOR ADDITIONAL INFORMATION.
 - 6 REMOVE TERMINALS (SUPPLIED WITH KEY SWITCH), CRIMP ON TO WIRE ASM-JUMPER, AND RECONNECT TO KEY SWITCH.
 - 5 CUT CIRCUIT DY GOING TO SLIDEOUT SWITCH HOUSING AND RECONNECT AS SHOWN.
 - 4 SUPPLIED BY GREAT ALASKAN RENTAL COMPANY.
 - 3 SEE WIRING INSTL-BODY, 110V FOR ADDITIONAL INFORMATION.
 - 2 MOUNT MAGNET USING PILOT HOLES IN SCREEN DOOR FRAME MOUNT WITH MAGNET TOWARD SWITCH.
 - 1 MOUNT SWITCH AND SPACER TO BLOCK ON JAMB ADJUST HEIGHT TO MATCH MAGNET.

- 53Z WTR HTR-6GAL/110/LP/MTR/AUTO
- 23T DRAINAGE SYSTEM-HEATED
- 23R DRAINAGE SYSTEM/HEAT-PREWIRE
- 086 INTERIOR UPGRADE PACKAGE
- 644 GREAT ALASKAN RENTAL PACKAGE
- 50H RADIOS TWO-WAY (4)
- 40N GEN-4.0KW-ONANGAS-MICROQUIET
- 23T DRAINAGE SYSTEM-HEATED
- 1E2 ENTRANCE STEP-ELEC.
- 1A3 GENERATOR WITHOUT
- 265 CODES/STANDARDS-CSA/CMVSS
- 1B1 CODES/STANDARDS USA

FOR ELECTRICAL TORQUE SPECIFICATIONS SEE DWG NO. 128783-01-000

FOR ELECTRICAL CALLOUTS SEE DWG NO. 121339-01-000

FIRST USED	07 331C
TITLE	DO NOT SCALE DRAWING
WIRING INSTL-BODY, 12V	
SHEET 4	PART NO 156513 REV

8

7

6

5

4

3

2

1

D

D

C

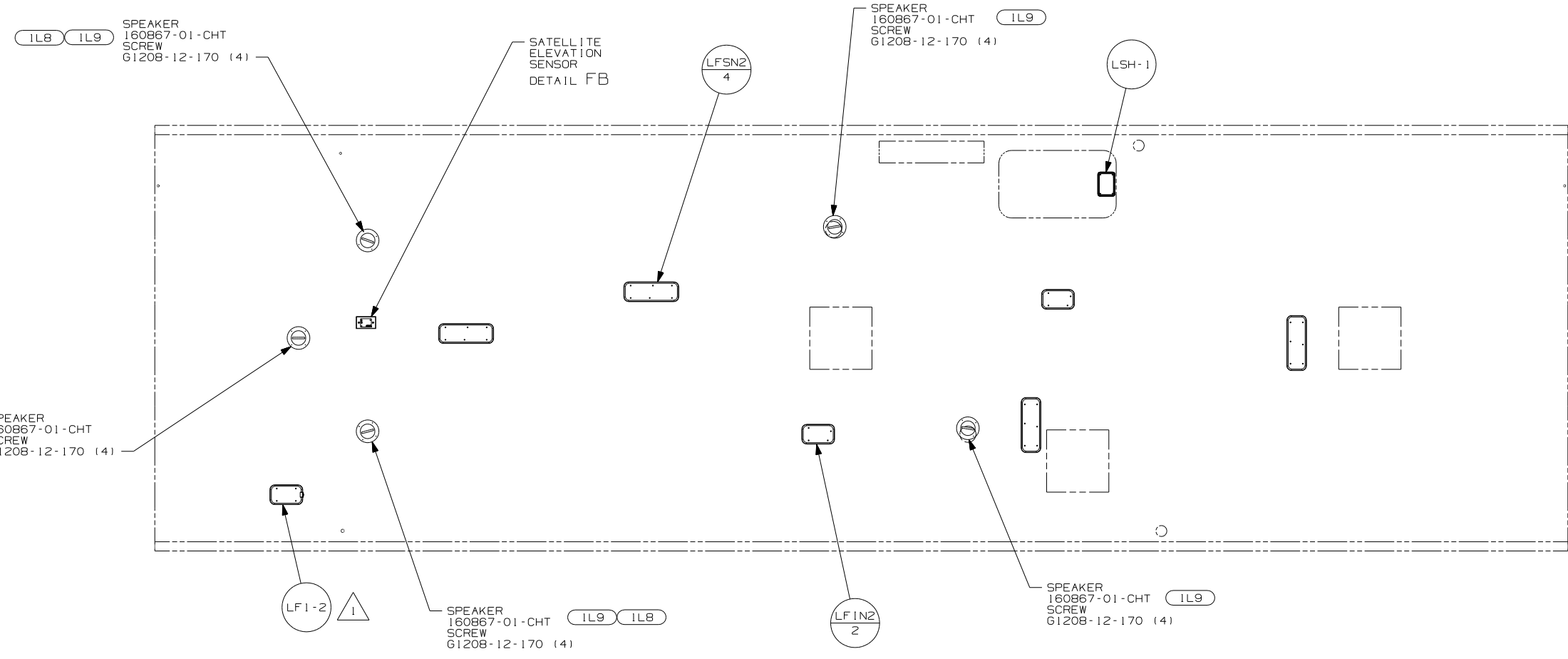
C

B

B

A

A



NOTES:

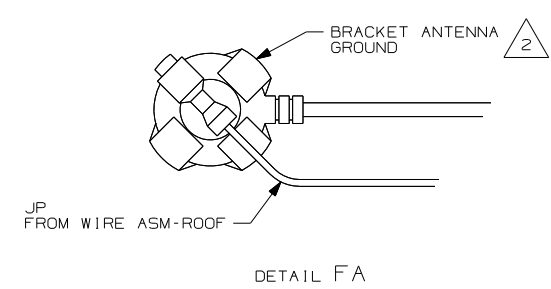
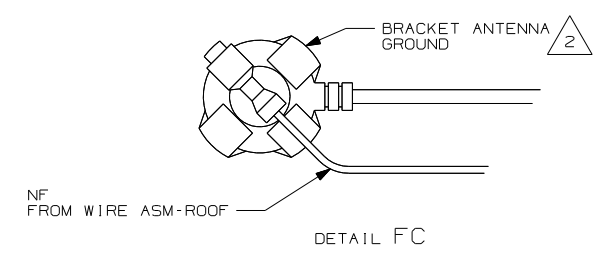
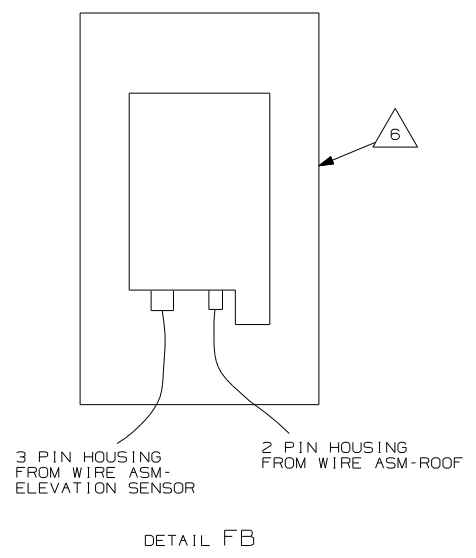
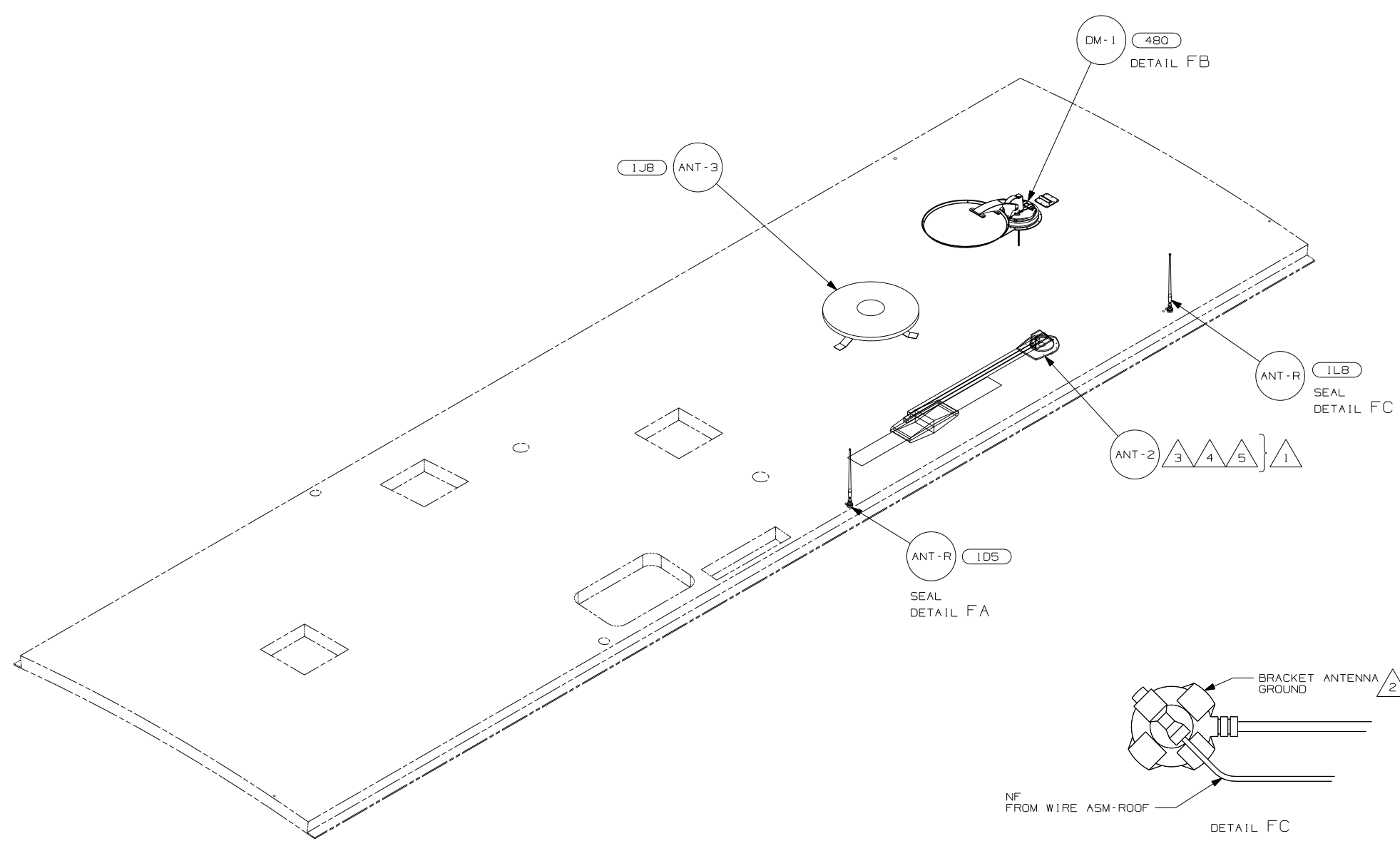
1 NOT USED WITH IL9

FOR ELECTRICAL TORQUE SPECIFICATIONS SEE DWG NO. 128783-01-000

FOR ELECTRICAL CALLOUTS SEE DWG NO. 121339-01-000

- IL9 ENTERTAINMENT CENTER-CABOVER
- IL8 TV-20"AC,LCD,STEREO/CD/DVD
- 265 CODES/STANDARDS-CSA/CMVSS
- 1B1 CODES/STANDARDS USA

FIRST USED	07 331C	
TITLE	DO NOT SCALE DRAWING	
TITLE	WIRING INSTL-BODY, 12V	
SHEET 5	PART NO 156513	REV



- NOTES:
- △6 SENSOR SUPPLIED WITH SATELLITE ASSEMBLY.
 - △5 ADD RUBBER BUMPER TO ROOF UNDER EACH END OF ANTENNA IN DOWN POSITION.
 - △4 LOCATE CLAMP TO RETAIN CABLE BUT NOT TO RESTRICT ANTENNA TRAVEL.
 - △3 SEE DRAWING 76319-01-000 FOR INSTALLATION OF TV ANTENNA.
 - △2 WRAP BRACKET LEGS AROUND ANTENNA BASE.
 - △1 NOT USED WITH (1J8)

- (1L8) TV-20"AC,LCD,STEREO/CD/DVD
- (480) SATELLITE DISH & ELEV.SENSOR
- (1J8) TV ANTENNA-OMNIDIRECTIONAL
- (1D5) ENTERTAINMENT CENTR/EXT W/CD
- (265) CODES/STANDARDS-CSA/CMVSS
- (1B1) CODES/STANDARDS USA

FOR ELECTRICAL TORQUE SPECIFICATIONS SEE DWG NO. 128783-01-000

(X-X) FOR ELECTRICAL CALLOUTS SEE DWG NO. 121339-01-000

FIRST USED	07 331C
DO NOT SCALE DRAWING	
TITLE:	WIRING INSTL-BODY, 12V
SHEET 6	PART NO 156513 REV